

FIRE ALARM LEGEND						
NEW	EXIST	SYMBOL	DESCRIPTION	MANUFACTURER	PART #	MOUNTING
1	0	[BPSX]	BOOSTER POWER SUPPLY	POTTER	PSN-106	SELF CONTAINED
3	7	[AC]	ADDRESSABLE SMOKE DETECTOR AC - INDICATES DEVICE MOUNTED ABOVE CEILING	FARENHYT	IDP-PHOTO-W W/B300-6 BASE	4" SQ DEEP W/SINGLE GANG MUD RING
0	2	[XX]	STROBE - WALL MOUNT XX - INDICATES DEVICE CANDELA SETTING	SYSTEM SENSOR	SW	4 SQ DEEP
5	0	[XX]	STROBE - CEILING MOUNT XX - INDICATES DEVICE CANDELA SETTING	SYSTEM SENSOR	SCWL	4 SQ DEEP
0	1	[SPSW]	SPEAKER/STROBE - WALL MOUNT W - INDICATES WALL MOUNT SETTING / W - INDICATES DEVICE CANDELA SETTING	SYSTEM SENSOR	SPSW	4 SQ DEEP
		R	DENOTES EXISTING DEVICE RELOCATED			
		EX	DENOTES EXISTING DEVICE			
		EOL	END OF LINE DEVICE			

- SCOPE OF WORK:**
- 1) RELOCATE 3EA EXISTING SMDKE DETECTORS 4EA SMOKE DETECTORS TO REMAIN IN PLACE
 - 2) ADD 3EA NEW DETECTORS TO THE EXISTING SYSTEM
 - 3) ADD 1EA BOOSTER POWER SUPPLY TO POWER THE VISUAL DEVICES FOR THIS TENANT IMPROVEMENT AREA
 - 4) EXISTING 1EA SPEAKER/STROBE TO REMAIN IN PLACE
 - 5) INSTALL 1EA NEW STROBES IN THIS TENANT IMPROVEMENT AREA

WIRE LEGEND	
A	= 18-2 FPLP ADDRESSABLE INITIATING CKT
B	= 18-2 X 2 FPLP ADDRESSABLE INITIATING CKT LOOP
C	= 14-2 FPLP INDICATING CKT
D	= 14-2 X 2 FPLP INDICATING CKT LOOP
E	= 18-2 FPLP CONVENTIONAL INITIATING CKT
F	= 18-2 X 2 FPLP CONVENTIONAL INITIATING CKT LOOP
G	= 14-2 FPLP 24VDC POWER CKT
H	= 18-4 FPLP P-LINK CKT
I	
J	= 18-4 FPLP ANNUNCIATOR CKT
K	= 18-2 FPLP CONTROL CKT
L	= 18-4 FPLP REMOTE TEST STATION CKT

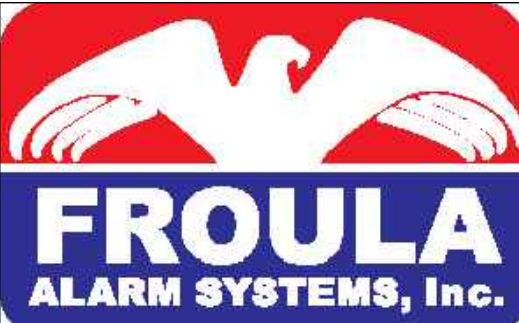
GSMOB 4TH FI TI Potter PSN-106 Booster Power Supply					
Current Load:		Standby:		Alarm:	
Device Type	Quantity	Amps	Total	Amps	Total
Main System Board	1	0.075	0.075	0.075	0.075
Sw Wall Strobe 15cd	2		0.071		0.142
SCWL Ceiling Strobe 15cd	5		0.041		0.205
SPSW Wall Speaker/Strobe 15cd	1		0.060		0.060
Total Panel Loads:			0.075 Amps	0.482 Amps	
Standby Current Load:		0.075 Amps	For 24 Hours = 1.800 Amp-hours		
Alarm Current Load:		0.482 Amps	For 5 Minutes = 0.040 Amp-hours		
			20% Derating = 2.209 Amp-hours		
Total System Current Load:			2.209 Amp-hours		
Battery Pair to be Used:		12VDC	Amp-hours	7AH	

Voltage Drop Chart GSMOB 4TH FI TI						
Panel	Circuit	Area	Total Wire Length	Amps	Voltage Drop	EOL Voltage
BPS #1	S1	GSMOB 3rd FI TI	526	0.407	0.683	19.717
BPS #1	S2	Spare	0	0.000	0.000	20.400
BPS #1	S3	Spare	0	0.000	0.000	20.400
BPS #1	S4	Spare	0	0.000	0.000	20.400
BPS #1	S5	Spare	0	0.000	0.000	20.400
BPS #1	S6	Spare	0	0.000	0.000	20.400

SEQUENCE OF OPERATIONS	MANUAL PULL STATION	SMOKE DETECTION	ELEVATOR MACHINE RM/SHAFT SMOKE DET.	MAIN FLOOR ELEV. LOBBY SMOKE DET.	OTHER FLOOR ELEV. LOBBY SMOKE DET.	HEAT DETECTION	DUCT SMOKE DETECTION	WET FLOW SWITCH	DRY FLOW SWITCH	H-LOW AIR	DRY TAMPER SWITCH	WET TAMPER SWITCH	POST INDICATOR VALVE	SYSTEM TROUBLE
ACTIVATION OF LOCAL ALARM AT FACP	X	X	X	X	X	X	X	X	X	X	X	X	X	X
INDICATION OF ALARM AT LCD ANNUNCIATOR	X	X	X	X	X	X	X	X	X	X	X	X	X	X
ACTIVATE ALL AUDIBLE & VISIBLE DEVICES	X	X	X	X	X	X	X	X	X	X	X	X	X	X
SHUT DOWN RESPECTIVE HVAC UNIT							X							
INITIATE ELEV. RECALL TO MAIN FLOOR						X								
INITIATE ELEV. RECALL TO ALTERNATE FLOOR				X	X	X								
TRANSMIT ALARM SIGNAL TO CENTRAL STATION	X	X	X	X	X	X	X	X	X	X	X	X	X	X
TROUBLE/SUPV. INDICATION AT FACP							X			X	X	X	X	X
TROUBLE/SUPV. INDICATION AT LCD ANNUNCIATOR							X			X	X	X	X	X
TRANSMIT TROUBLE/SUPV. SIGNAL TO CENTRAL STATION							X			X	X	X	X	X

City of Puyallup
Development & Permitting Services
ISSUED PERMIT

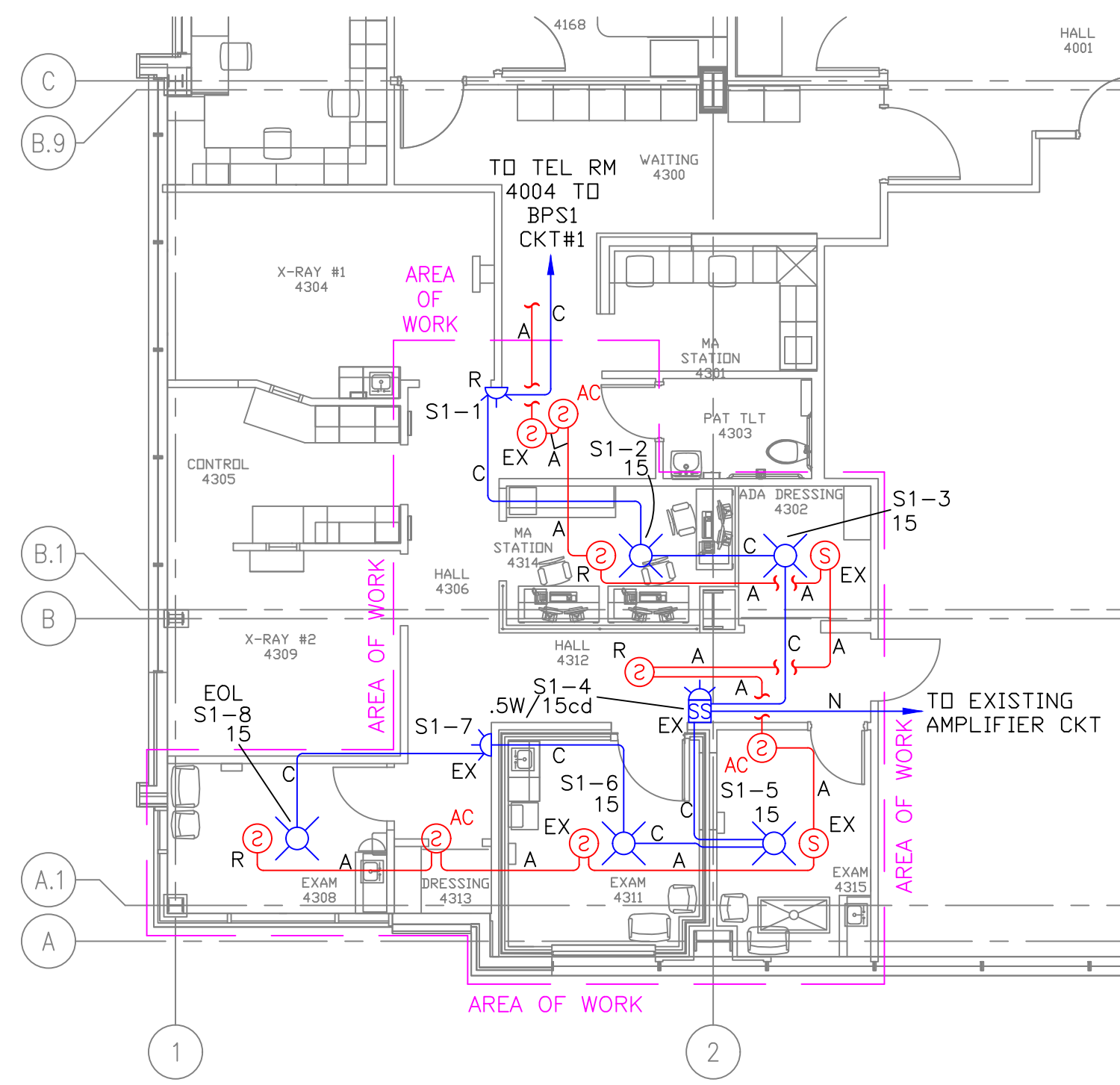
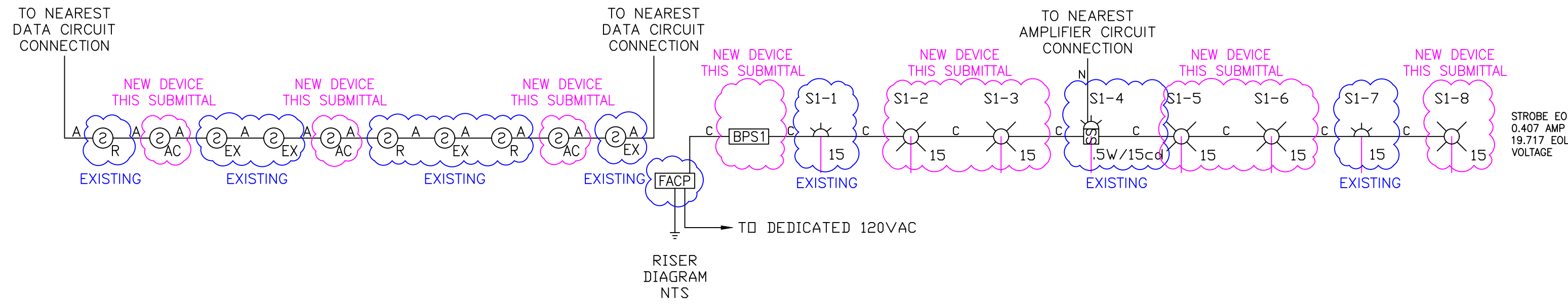
Building Planning
Engineering Public Works
Fire Traffic



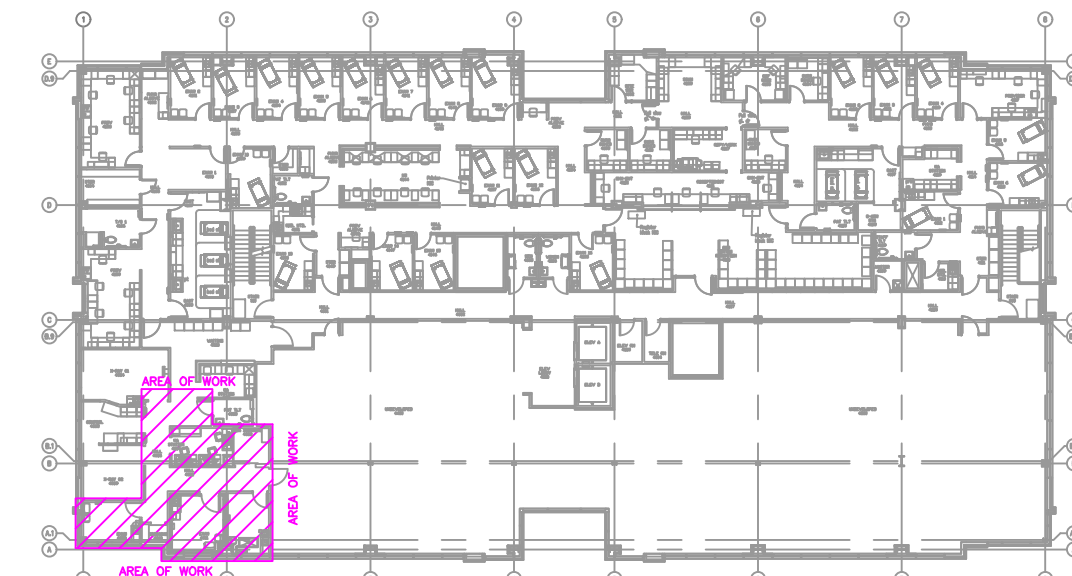
Froula Alarm Systems, Inc.
861 Industry Drive
Tukwila, WA 98188
206-575-1962



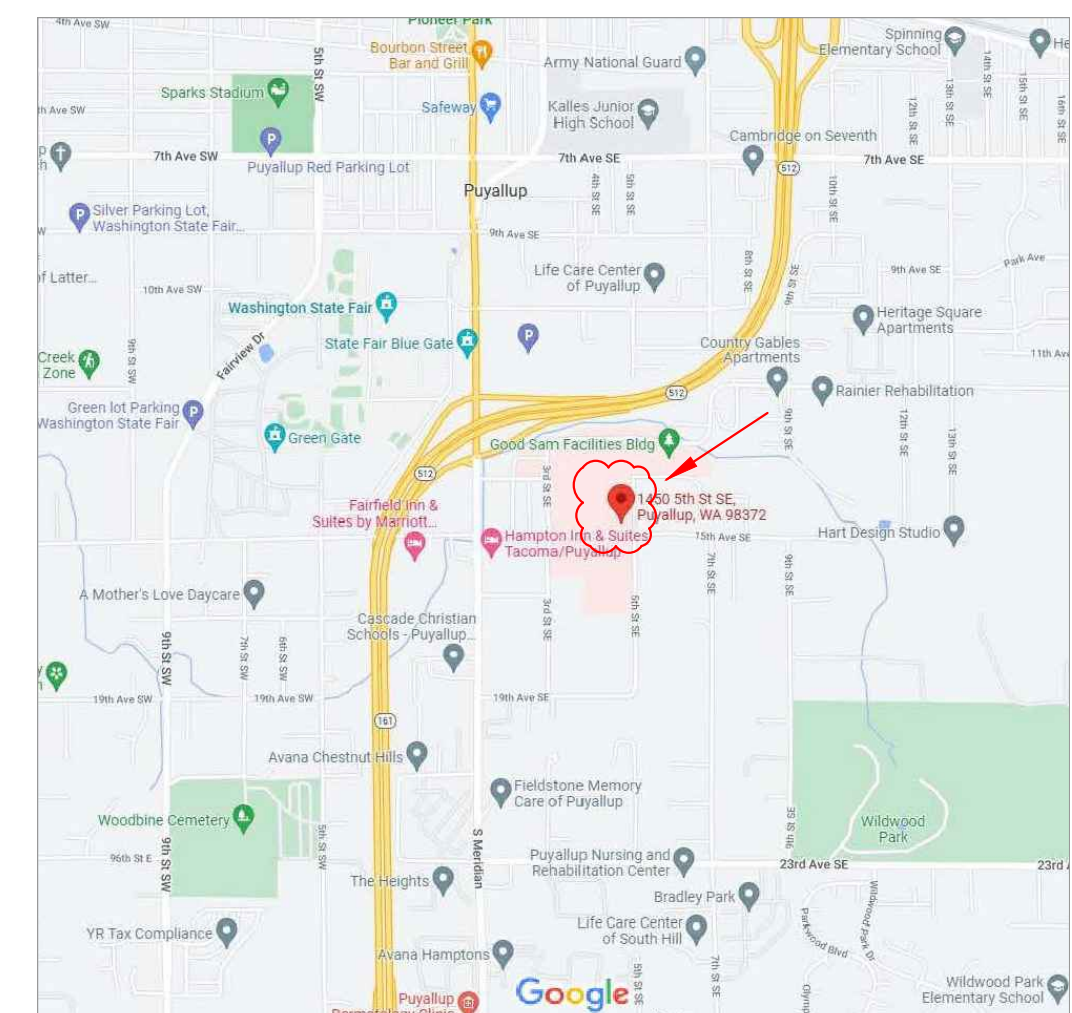
FIRE ALARM SYSTEM
GSMOB - 4TH FLOOR
ORTHOPEDICS & SPORTS MEDICINE CLINIC TENANT IMPROVEMENT
1450 - 5TH STREET SE
PUYALLUP, WASHINGTON 98372



FIRE ALARM FLOOR PLAN
SCALE: 1/8"=1'-0"



SITE PLAN
SCALE: NTS



SITE MAP
SCALE: NTS

REV	DATE	DESCRIPTION
	12-29-22	PERMIT DRAWINGS

PROJ. MGR.: Andrew Earle
DRAFTER: HEW

FA-1
SHEET NO.
1 OF 1