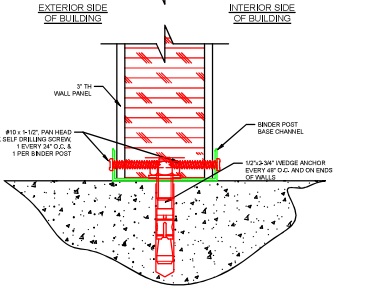
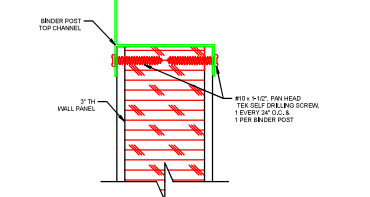
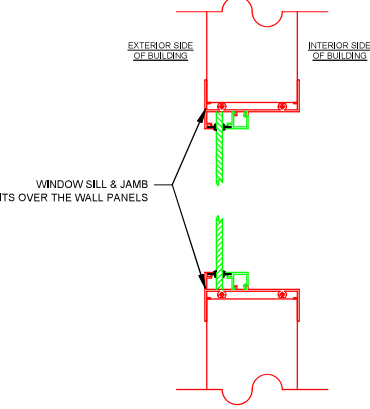


ATTACH REVISED LEGIBLE SHEET WITH ENGINEERED SEAL ORIGINAL FOR SITE SET FOR INSTALLATION AND INSPECTIONS.

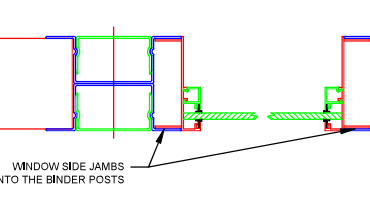
TOP CHANNEL ATTACHMENT



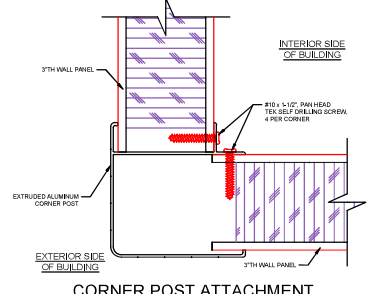
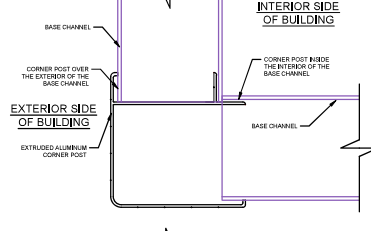
BASE CHANNEL TO CONCRETE ATTACHMENT



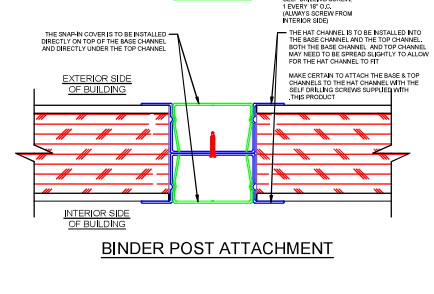
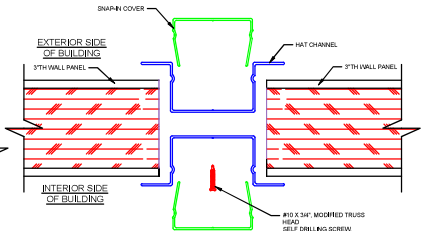
WINDOW SILL & JAMB DETAIL



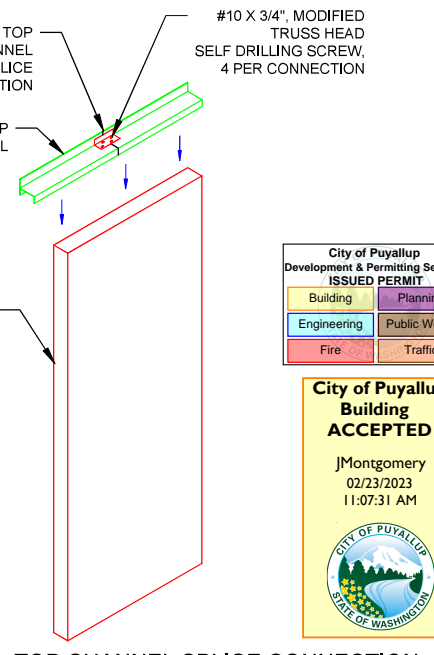
WINDOW SIDE JAMB DETAIL



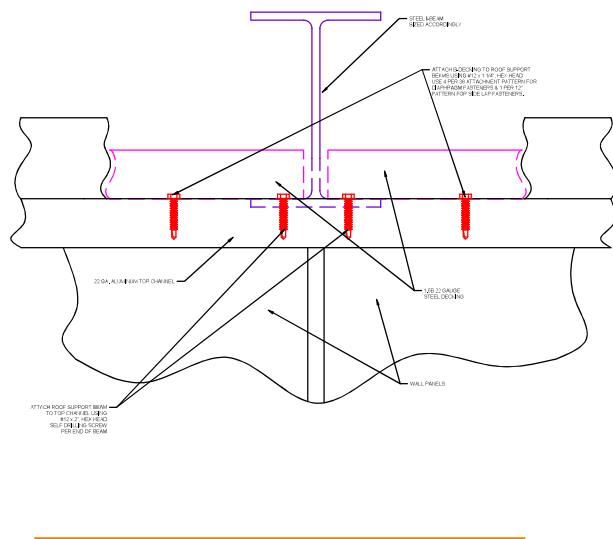
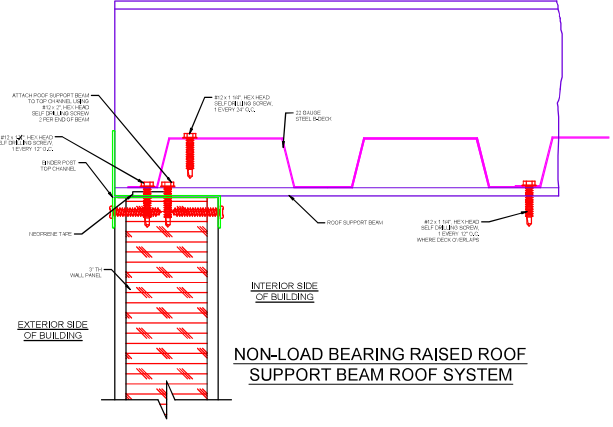
CORNER POST ATTACHMENT



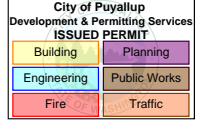
BINDER POST ATTACHMENT



TOP CHANNEL SPLICE CONNECTION



BUILDING TWO



LEGEND

	TELEGATA PREP
	SWITCH
	DUPLEX RECEPTACLE
	WINDOW
	DOOR
	EXTENDED COLUMN
	COLUMN
	I BEAM (STRUCTURAL)
	COLD ROLLED MEMBER
	1-1/2" X 1-1/2" X 11 GA. RAILING
	K-SERIES BAR JOIST

JOB NUMBER: 16908-2 / INS10812
 DRAWN BY: C. KILLEBREW
 CHECKED BY: H. MAXWELL
 DATE: 10/25/2022

DEALER: **REDDOT**
 CUSTOMER: **REDDOT**

THIS DRAWING IS THE PROPERTY OF PANEL-BUILT, INC. AND MAY NOT BE REPRODUCED OR COPIED WITHOUT WRITTEN PERMISSION OF PANEL-BUILT, INC. ALL INFORMATION SHOWN ON THIS DRAWING IS THE PROPERTY OF PANEL-BUILT, INC. AND MAY NOT BE REPRODUCED OR COPIED WITHOUT SPECIFIC WRITTEN PERMISSION OF PANEL-BUILT, INC.

PANEL BUILT INCORPORATED
 10000 10TH AVENUE SE, SUITE 100
 PUYALLUP, WA 98449
 CONTACT US AT 800-838-3700 OR WWW.PANELBUILT.COM

LENGTH ± 1/8" > 10'-0" ± 1/4"
 HOLES ± 1/16"
 PAGE: A-1