

PROJECT:

FERRUCCI
JUNIOR HIGH ADDITION
EXTERIOR & INTERIOR SIGNAGE

ISSUE DATE: DECEMBER 30, 2022

6th Issue Date: November 14, 2022

5th Issue Date: November 2, 2022

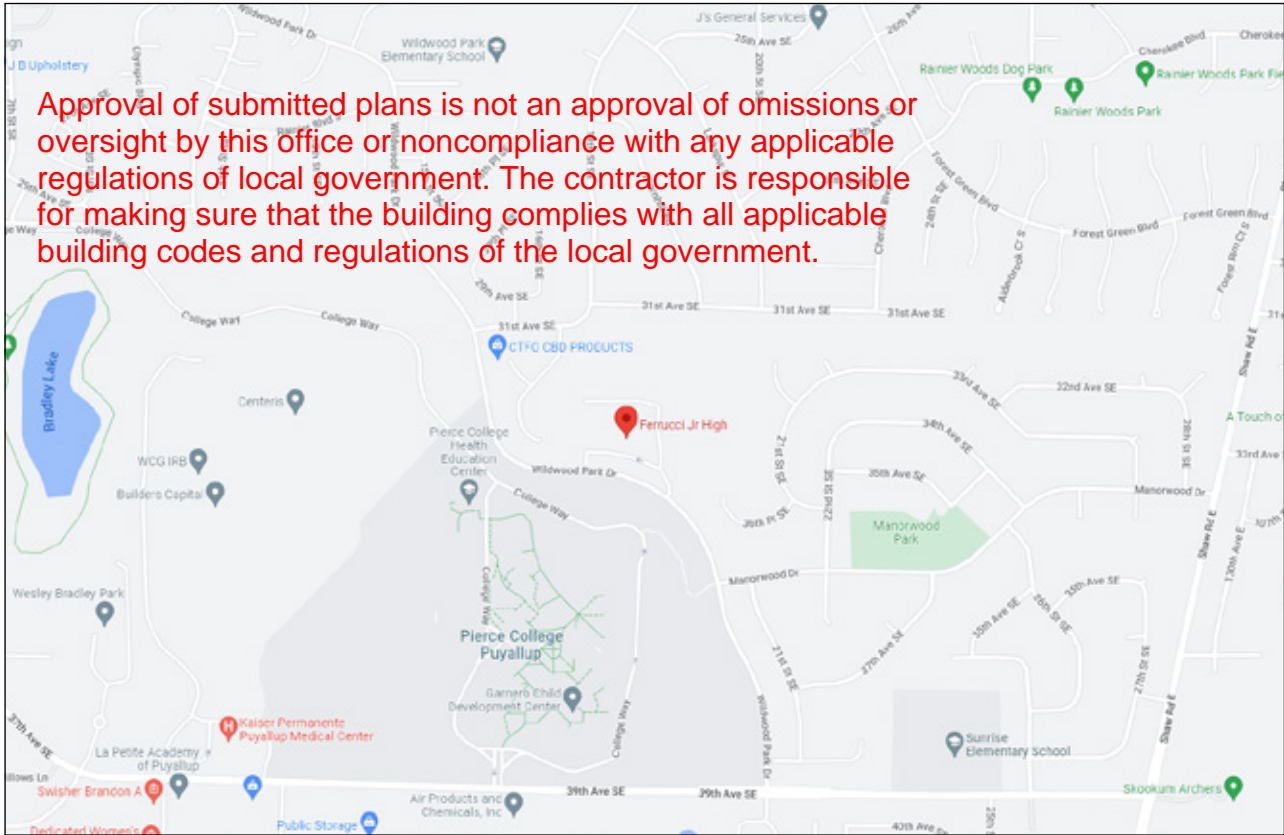
4th Issue Date: September 28, 2022

3rd Issue Date: July 19, 2022

2nd Issue Date: May 27, 2022

1st Issue Date: May 12, 2022

SITE ADDRESS | 3213 WILDWOOD PARK DR. PUYALLUP, WA 98374



VICINITY MAP
Not To Scale



DRAWING INDEX

EXTERIOR SIGNAGE

	EXTERIOR SITE PLAN	2
ST: EX. NAME	REVERSE CUT ALUMINUM PANELS	3 - 5
READER BOARD	ELECTRONIC READER BOARD SIGN	6 - 12
INTERIOR ADA & WAYFINDING SIGNAGE		
	INTERIOR FLOOR PLANS	13 - 15
	TYPICAL ELEVATIONS	16
ST: RESTROOM	ADA RESTROOM ID	17 - 27
ST: A2	EVACUATION SIGNS	28
ST: A3	EXIT ID	29
ST: A5	MAX OCCUPANCY ID	30
ST: C1	ROOM ID	31 - 32
ST: C2	INSERT ROOM ID	33 - 35
ST: F	ENTRANCE SIGN	36
ST: X1-3	FIRE DEPARTMENT CODE ID	37
ST: D2.0-D2.6	WAYFINDING ID	38
ST: D3.1A-C	WAYFINDING ID	39
ST: D3.2A-C	WAYFINDING ID	40
ST: H	CAST BRONZE PLAQUE	41
BOYS/GIRLS FCO	ALUMINUM RESTROOM FCO	42

See Site Plan Sheet 2 of 42
for engineering comments

City of Puyallup
Building
REVIEWED
FOR
COMPLIANCE

DLeahy
02/15/2023
10:01:54 AM

PROJECT FINISHES

	SATIN BLACK
	BRIGHT WHITE
	ADA ACCESSIBILITY BLUE Pantone 293C
	10 PART SATIN BLACK / 3 PART WHITE Matthews Paint
	MP10206 LEAD PIPE Matthews Paint
	SATIN BRONZE
	DURANODIC BRONZE PEBBLE
	BRUSHED ALUMINUM Vertical Brush
	RED / WHITE CORE ROWMARK ENGRAVING MATERIAL
	3M 220-20 MATTE WHITE High Performance Cast Vinyl
	3M 220-12 BLACK High Performance Cast Vinyl
	PANTONE 201C Matched w/ Matthews Paint



1513 Central Ave South
Kent, Washington 98032

253-852-1354

www.evergreensign.com

DATE: 05-12-2022

Project Manager: CHZ

Drawn By: NST

Checked By:

Administrator:

Revision Dates:

- ① 05-27-2022
- ② 06-13-2022
- ③ 09-28-2022
- ④ 11-02-2022
- ⑤ 11-14-2022
- ⑥ 12-30-2022

ALL MATERIALS IN THESE DRAWINGS
REPRESENT THE SOLE PROPERTY OF
EVERGREEN SIGN COMPANY AND CANNOT
BE REPRODUCED, PUBLISHED OR USED IN
ANY WAY WITHOUT WRITTEN PERMISSION
OF EVERGREEN SIGN COMPANY

FERRUCCI JUNIOR HIGH
3213 WILDWOOD PARK DR.
PUYALLUP, WA 98374

City of Puyallup
Development & Permitting Services
ISSUED PERMIT

Building

Planning

Engineering

Public Works

Fire

Traffic

COVER

12402 FERRUCCI JR HIGH | EXTERIOR SIGNAGE SITE PLAN

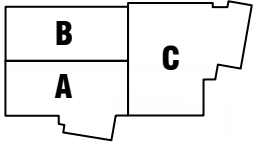


evergreen sign co.

1513 Central Ave South
Kent, Washington 98032

253-852-1354

www.evergreensign.com



KEY PLAN

DATE: 05-12-2022

Project Manager: CHZ

Drawn By: NST

Checked By:

Administrator:

Revision Dates:

- ① 05-27-2022
- ② 06-13-2022
- ③ 09-28-2022
- ④ 11-02-2022
- ⑤ 11-14-2022
- ⑥ 12-30-2022

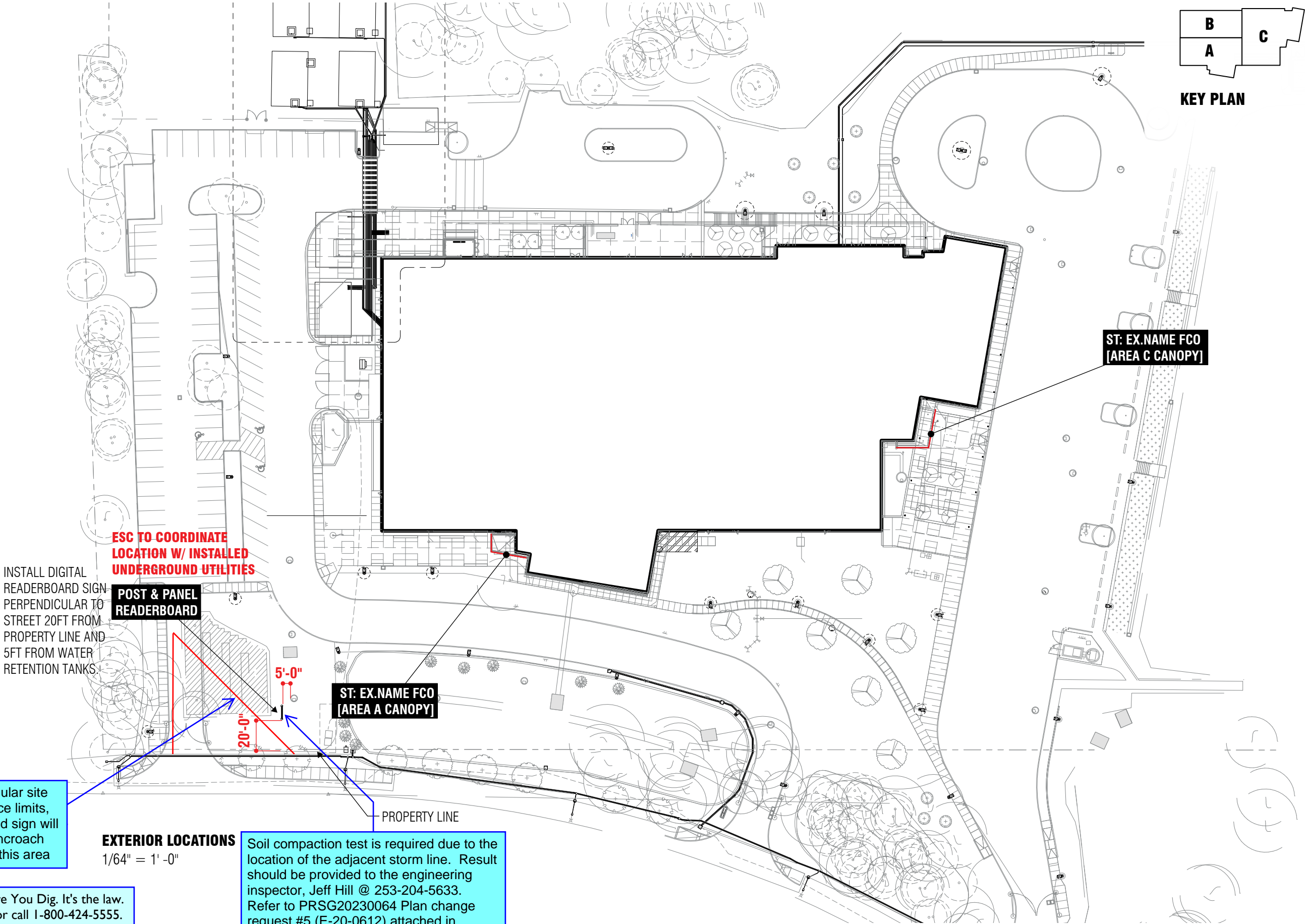
ALL MATERIALS IN THESE DRAWINGS
REPRESENT THE SOLE PROPERTY OF
EVERGREEN SIGN COMPANY AND CANNOT
BE REPRODUCED, PUBLISHED OR USED IN
ANY WAY WITHOUT WRITTEN PERMISSION
OF EVERGREEN SIGN COMPANY

FERRUCCI JUNIOR HIGH
3213 WILDWOOD PARK DR.
PUYALLUP, WA 98374

City of Puyallup Development & Permitting Services ISSUED PERMIT			
Building	Planning	Fire	Traffic
Engineering	Public Works		

SITE PLAN

EXTERIOR SIGNAGE



ESC TO COORDINATE
LOCATION W/ INSTALLED
UNDERGROUND UTILITIES

INSTALL DIGITAL
READERBOARD SIGN
PERPENDICULAR TO
STREET 20FT FROM
PROPERTY LINE AND
5FT FROM WATER
RETENTION TANKS.

POST & PANEL
READERBOARD

ST: EX.NAME FCO
[AREA A CANOPY]

ST: EX.NAME FCO
[AREA C CANOPY]

EXTERIOR LOCATIONS

1/64" = 1' -0"

Soil compaction test is required due to the location of the adjacent storm line. Result should be provided to the engineering inspector, Jeff Hill @ 253-204-5633. Refer to PRSG20230064 Plan change request #5 (E-20-0612) attached in CityView for excavation limits - disturbed material

Triangular site distance limits, proposed sign will not encroach within this area

Call Before You Dig. It's the law.
Dial 811 or call 1-800-424-5555.



1513 Central Ave South
Kent, Washington 98032

253-852-1354

www.evergreensign.com

DATE: 05-12-2022

Project Manager: CHZ

Drawn By: NST

Checked By:

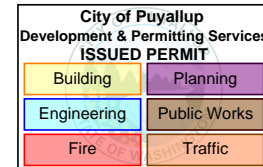
Administrator:

Revision Dates:

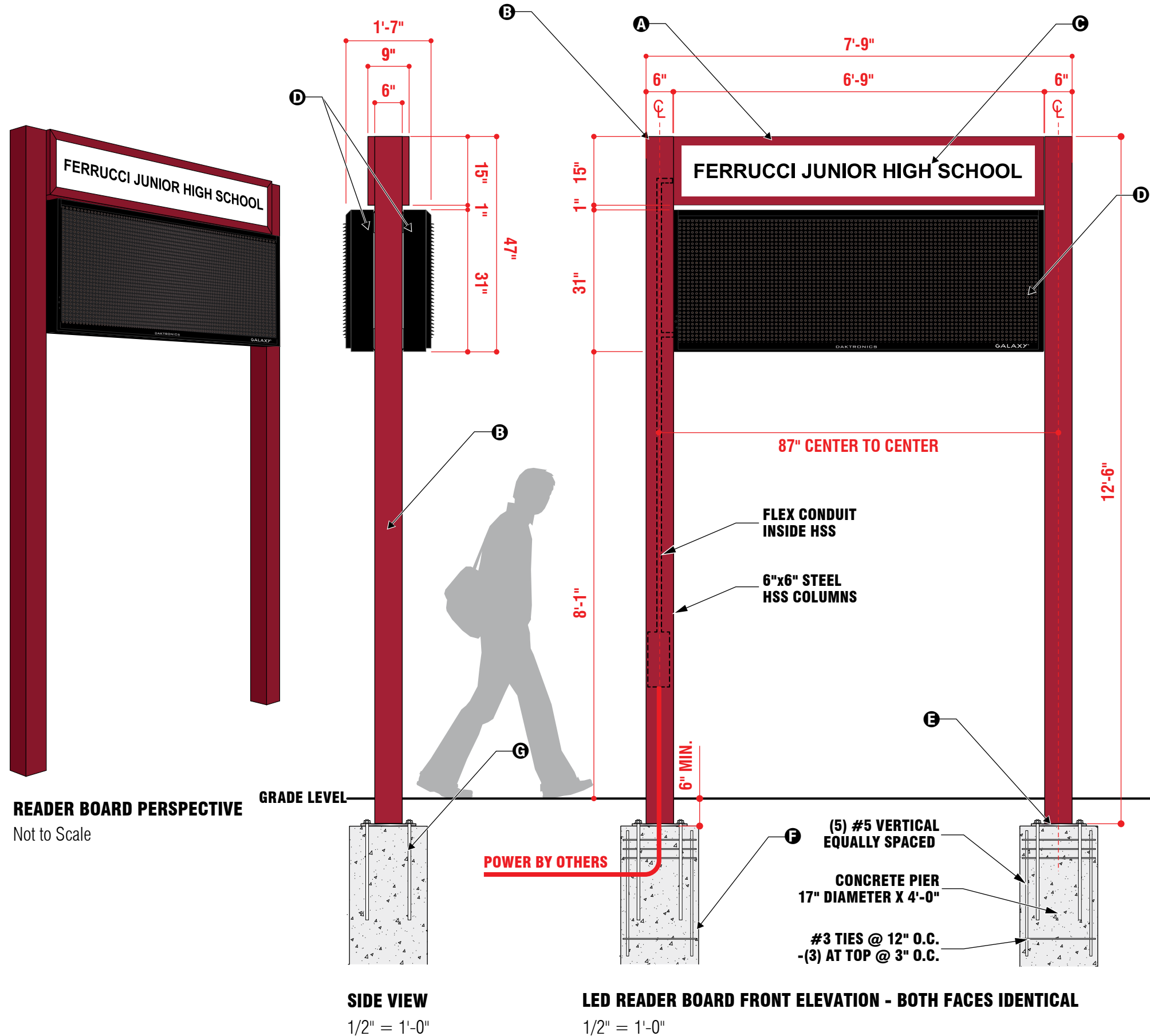
- ① 05-27-2022
- ② 06-13-2022
- ③ 09-28-2022
- ④ 11-02-2022
- ⑤ 11-14-2022
- ⑥ 12-30-2022

ALL MATERIALS IN THESE DRAWINGS
REPRESENT THE SOLE PROPERTY OF
EVERGREEN SIGN COMPANY AND CANNOT
BE REPRODUCED, PUBLISHED OR USED IN
ANY WAY WITHOUT WRITTEN PERMISSION
OF EVERGREEN SIGN COMPANY

FERRUCCI JUNIOR HIGH
3213 WILDWOOD PARK DR.
PUYALLUP, WA 98374



LED READERBOARD
POST & PANEL SIGN



SPECIFICATIONS

A ALUMINUM BACKLIT LED CABINET

9" DEEP DOUBLE-FACED ALUMINUM CABINET W/ 3/16" THICK SIGN WHITE ACRYLIC PANELS BACKLIT BY INTERNALLY MOUNTED LED STRIP LIGHTING. RETAINER AND RETURNS PAINTED TO MATCH STEEL SUPPORT FRAME - PAINT COLOR:



PANTONE 201C
Matched w/ Matthews Paint

B STEEL COLUMNS & CROSSBARS

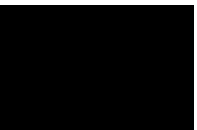
(2) 6" x 6" x 3/16" STEEL HSS COLUMNS AND (2) 3" x 5" STEEL HSS HORIZONTAL SUPPORT BEAMS, FLEXIBLE CONDUIT INSIDE HSS COLUMN FOR ROUTING WIRING TO LED BACKLIT PANEL AND DAKTRONIX DISPLAY. ALL GALVANIZED STEEL TO BE PAINTED:



PANTONE 201C
Matched w/ Matthews Paint

C MESSAGE TEXT

4" TALL 1ST SURFACE APPLIED VINYL CUT LETTERING, COLOR:



3M BLACK 220-12
HIGH PERFORMANCE EXTERIOR CAST VINYL

FONT: ARIAL BOLD

D GALAXY GS6 DOUBLE FACE LED DISPLAY

32x100 pixels at 19.81mm pitch
SEE SHEETS 7 - 8 FOR PRODUCT DETAILS

E MOUNTING PLATES

(2) 12"x 12"x 1/2" THICK STEEL MOUNTING PLATES WELDED TO 6" SQUARE STEEL POSTS W/ 3/4" DIA. HOLES FOR (4) 5/8" BOLTS - TOTAL OF (8)

F CONCRETE PIERS W/ REBAR CAGE

(2) 17" DIA. X 4' -0" TALL POURED IN PLACE CONCRETE PIERS WITH INTERNAL REBAR SUPPORT CAGE

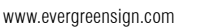
G INSTALLATION

CABINET MOUNTED TO CONCRETE PIERS USING (8) 5/8"-11 X 21" LONG L-ANCHOR 316 SS - 4" HOOK AND 6" THREAD.

(2) 120V CIRCUITS FOR LED DISPLAY AND CABINET - PULLED BY OTHERS

PRSG20230064

QUANTITY: [1] ONE

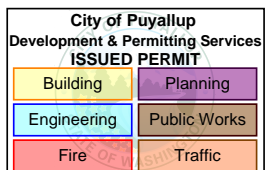


Administrator:

- ① 05-27-2022
- ② 06-13-2022
- ③ 09-28-2022
- ④ 11-02-2022
- ⑤ 11-14-2022
- ⑥ 12-30-2022

ALL MATERIALS IN THESE DRAWINGS
REPRESENT THE SOLE PROPERTY OF
EVERGREEN SIGN COMPANY AND CANNOT
BE REPRODUCED, PUBLISHED OR USED IN
ANY WAY WITHOUT WRITTEN PERMISSION
OF EVERGREEN SIGN COMPANY

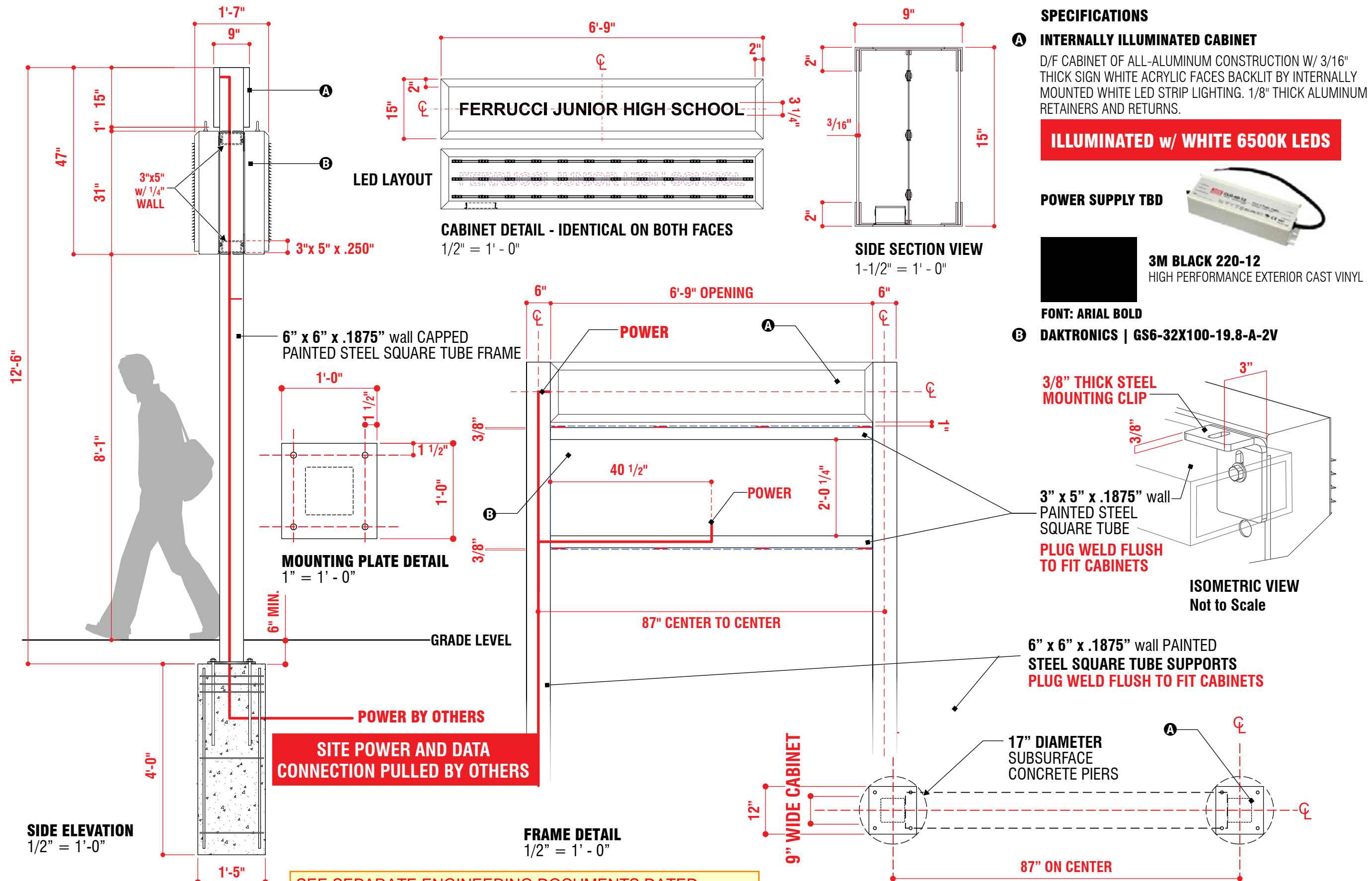
FERRUCCI JUNIOR HIGH
3213 WILDWOOD PARK DR.
PUYALLUP, WA 98374



LED READERBOARD

POST & PANEL DETAIL

sheet **7** of **42**



SEE SEPARATE ENGINEERING DOCUMENTS DATED 2/13/2023 FOR MORE DETAILED AND DIFFERENT FOOTING DETAILS. MUST BE ON SITE FOR INSPECTORS AT TIME OF ALL INSPECTIONS. DL.

PRSG20230064

12402 FERRUCCI JR HIGH | ST: EX. POST & PANEL READERBOARD INSTALL LOCATION



ST: EX. POST & PANEL READERBOARD SITE PHOTOS
Taken on November 11, 2022

**DIRT MOUNDS MUST BE MOVED
PRIOR TO SIGN INSTALLATION**



1513 Central Ave South
Kent, Washington 98032

253-852-1354

www.evergreensign.com

DATE: 05-12-2022

Project Manager: CHZ

Drawn By: NST

Checked By:

Administrator:

Revision Dates:

- ① 05-27-2022
- ② 06-13-2022
- ③ 09-28-2022
- ④ 11-02-2022
- ⑤ 11-14-2022
- ⑥ 12-30-2022

ALL MATERIALS IN THESE DRAWINGS
REPRESENT THE SOLE PROPERTY OF
EVERGREEN SIGN COMPANY AND CANNOT
BE REPRODUCED, PUBLISHED OR USED IN
ANY WAY WITHOUT WRITTEN PERMISSION
OF EVERGREEN SIGN COMPANY

FERRUCCI JUNIOR HIGH
3213 WILDWOOD PARK DR.
PUYALLUP, WA 98374

City of Puyallup Development & Permitting Services ISSUED PERMIT			
Building	Planning		
Engineering	Public Works		
Fire	Traffic		

LED READERBOARD
POST & PANEL LOCATION

12402 FERRUCCI JR HIGH | LED READERBOARD GALAXY GS6 19.8MM AMBER SPECIFICATIONS

QUANTITY: [1] ONE

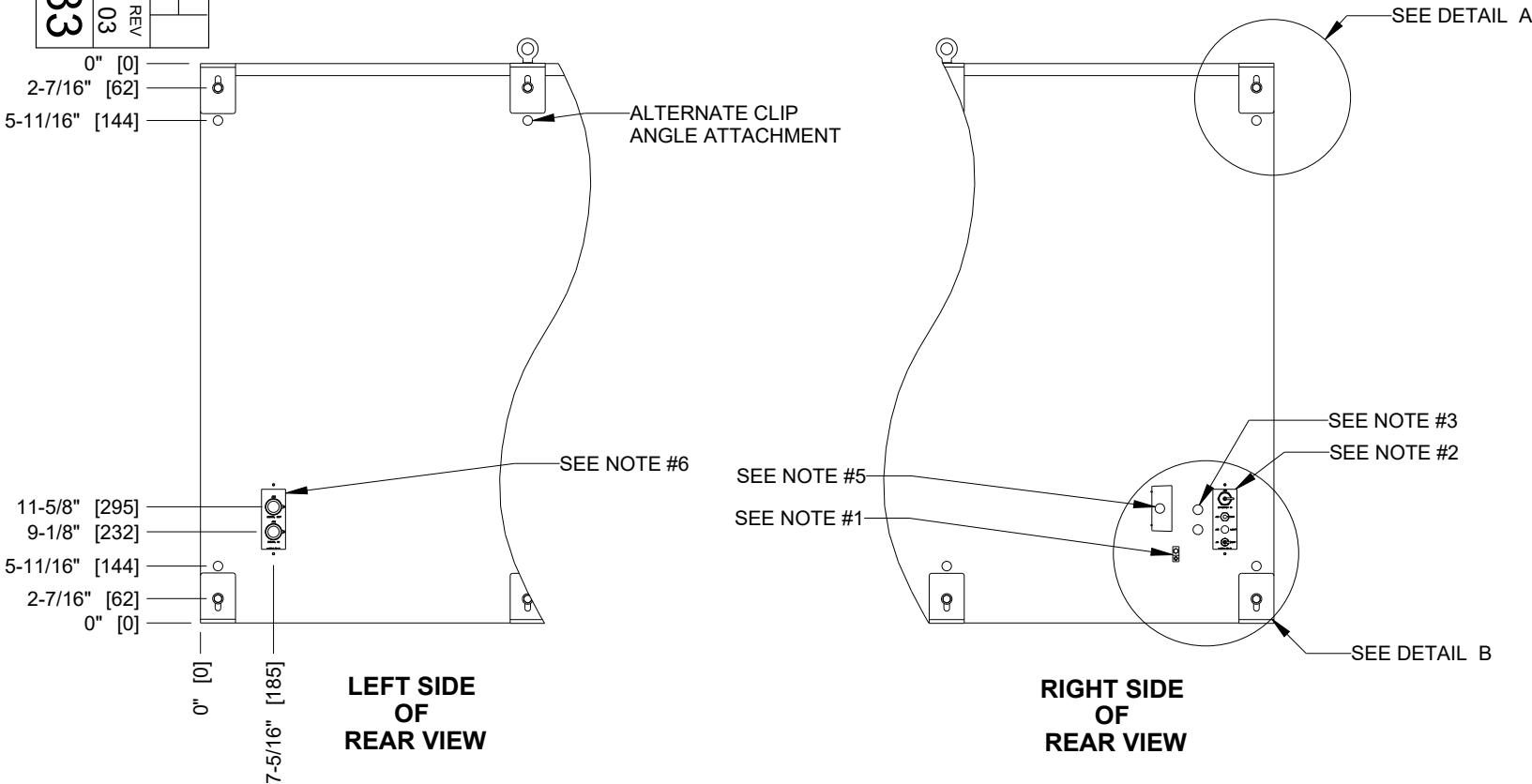


ST: LED READER BOARD DISPLAY

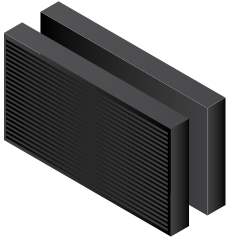
Model: GS6-32X100-19.8-AMBER-2V
Display Configuration: 2V - TWO ONE SIDED DISPLAYS - SAME CONTENT
Cabinet Color: SEMI-GLOSSBLACK
Led Color: MONOCHROME AMBER (4,096 SHADES)
Communication Method: FIBER ETHERNET (SEE DRAWING 3119568) BY OTHERS

PROJECT:	GALAXY GS6 DISPLAYS				
TITLE:	SHOP DWG, GS6 - SIGNAL, POWER, & MOUNTING DETAILS				
DATE:	05-JUL-18	DIM UNITS:	INCHES [MILLIMETERS]	SHEET	REV
SCALE:	1/18	DO NOT SCALE DRAWING		1 OF 1	03
DESIGN:	TWITEH	JOB NO.	P1817	FUNC - TYPE - SIZE	E - 07 - B
DRAWN:	DOSTRAA				
					3097583

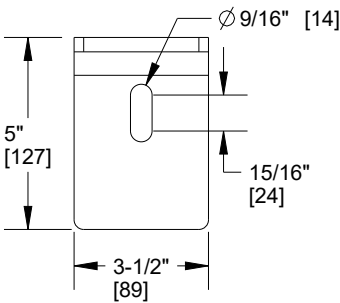
FOR DISPLAYS 2 X * THROUGH 6 X * MODS TALL



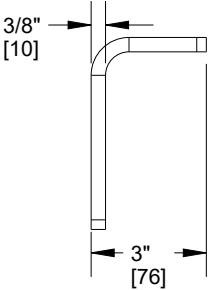
DISPLAY CONFIGURATION



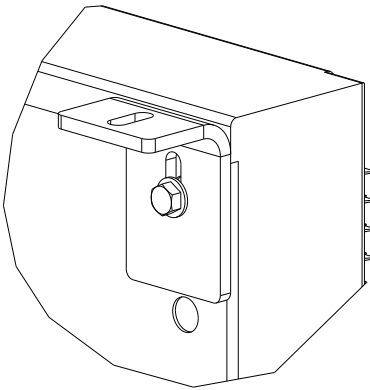
TWO-VIEW (2V)



FRONT VIEW



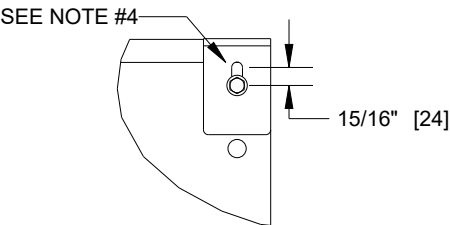
SIDE VIEW



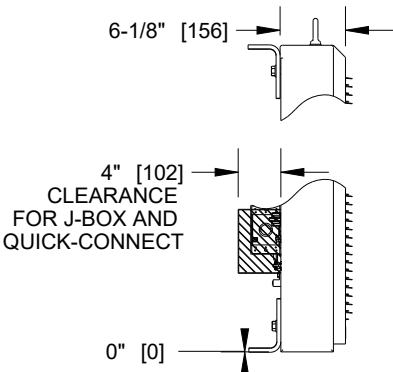
ISOMETRIC VIEW

SCALE 1/5

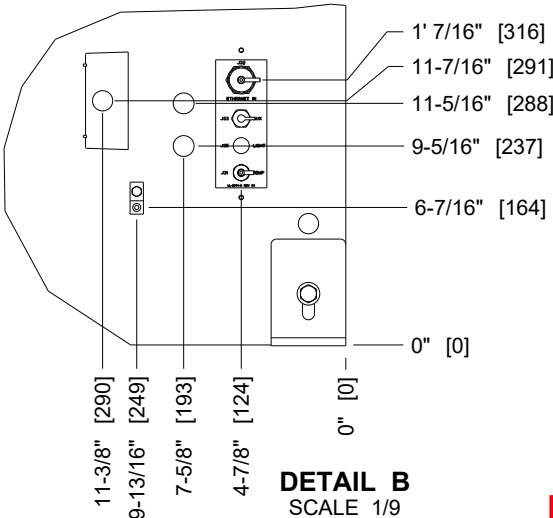
CLIP ANGLE DETAILS



DETAIL A
SCALE 1/10



SIDE VIEW



DETAIL B
SCALE 1/9

INSTALL NOTES	
1	GROUND LUG FOR GROUND CONNECTION
2	SIGNAL INPUT AT QUICK CONNECT. PRIMARY/SINGLE FACE DISPLAY SHOWN.
3	TWO 1" CONDUIT KNOCKOUTS FOR OPTIONAL SIGNAL ENTRANCE.
4	CLIP ANGLE FOR MOUNTING. CLIP ANGLES CAN BE ADJUSTED VERTICALLY AS NEEDED DURING INSTALLATION. CLIP ANGLE CAN BE WELDED OR BOLTED TO STRINGER.
5	POWER ENTRANCE. SEE SIZE SPECIFIC DRAWING FOR POWER RATING.
6	SIGNAL INTERCONNECT
7	MECHANICAL AND SIGNAL CONNECTIONS OCCUR EXTERNAL TO DISPLAY.
8	ALL CLIP ANGLES OR THEIR RESPECTIVE LOCATIONS MUST BE USED FOR MOUNTING.
9	ALLOWABLE NUTSERT TENSION IS 1000 LBS. PRYING SHOULD BE CONSIDERED.



1513 Central Ave South
Kent, Washington 98032

253-852-1354

www.evergreensign.com

DATE: 05-12-2022

Project Manager: CHZ

Drawn By: NST

Checked By:

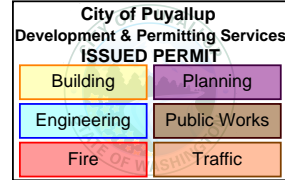
Administrator:

Revision Dates:

- ① 05-27-2022
- ② 06-13-2022
- ③ 09-28-2022
- ④ 11-02-2022
- ⑤ 11-14-2022
- ⑥ 12-30-2022

ALL MATERIALS IN THESE DRAWINGS
REPRESENT THE SOLE PROPERTY OF
EVERGREEN SIGN COMPANY AND CANNOT
BE REPRODUCED, PUBLISHED OR USED IN
ANY WAY WITHOUT WRITTEN PERMISSION
OF EVERGREEN SIGN COMPANY

FERRUCCI JUNIOR HIGH
3213 WILDWOOD PARK DR.
PUYALLUP, WA 98374



LED READERBOARD
MOUNTING DETAILS

PRSG20230064

12402 FERRUCCI JR HIGH | LED READERBOARD GALAXY GS6 19.8MM AMBER SPECIFICATIONS



PROJECT: GALAXY GS6 SERIES			
TITLE: SHOP DWG, GS6-R, 2' 7"x6' 9" (2x5 MODS)			
DATE: 08-MAR-21	DIM UNITS: INCHES [MILLIMETERS]		
SCALE: 1/15	DO NOT SCALE DRAWING		
DESIGN: TWHITEH	JOB NO. P1817	FUNC. TYPE - SIZE E - 07 - B	SHEET 1 OF 1
DRAWN: DOSTRAA			REV 05
3111177			

PIXELS HIGH (AAA)	PIXELS WIDE (BBB)	PIXEL SPACING (CC)
32	100	19.81mm

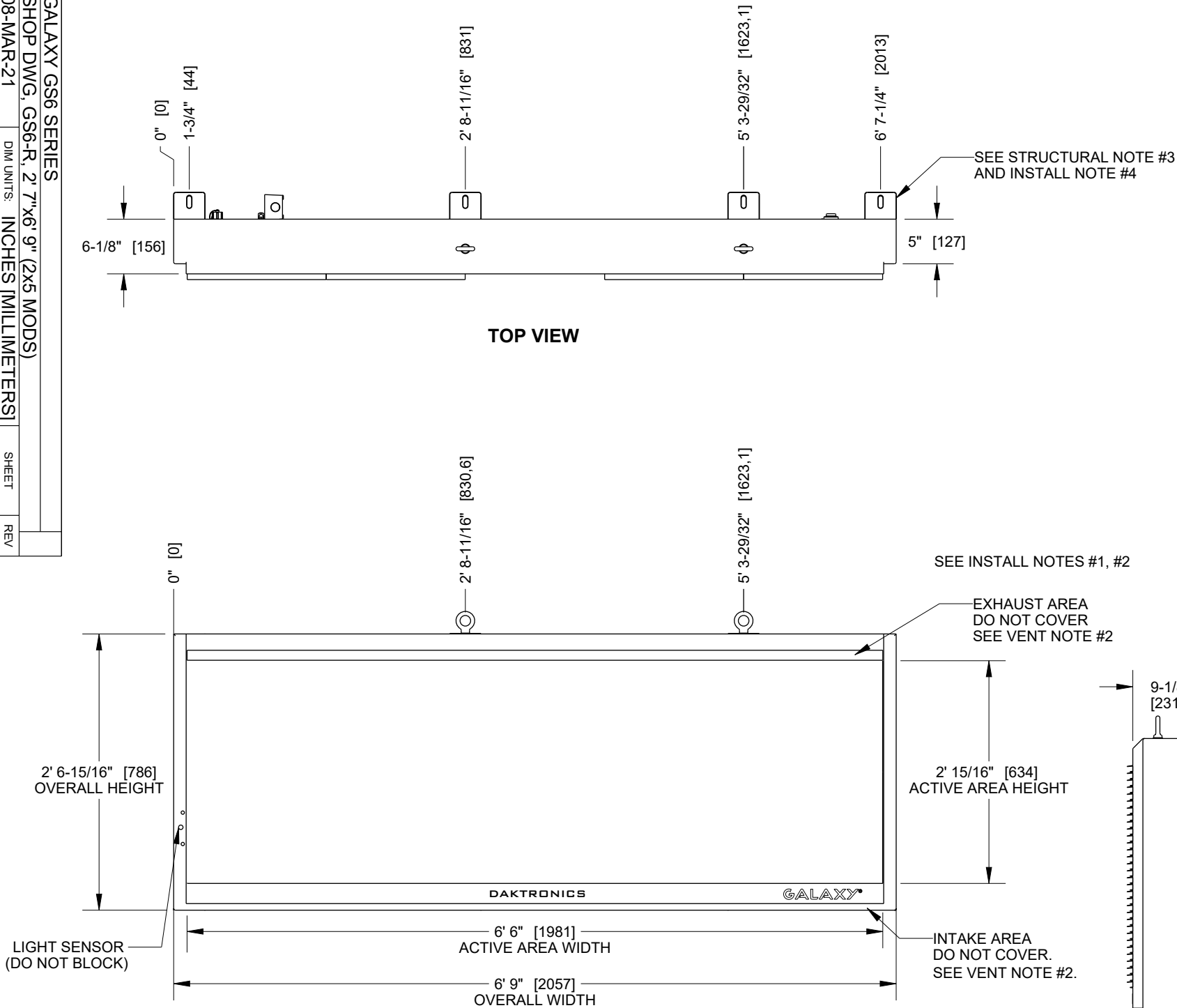
#	DETAIL	DESCRIPTION
1	DISPLAY	GS6 - AAAxBBB-CC (SEE CHART ON TOP LEFT)
2	LED COLOR	RED, AMBER, OR RGB
3	ACTIVE AREA	2' 15/16" [634] X 6' 6" [1981]
4	OVERALL SIZE	2' 6-15/16" [786] X 6' 9" [2057]
5	CABINET	ALUMINUM & STEEL
6	VENTILATION	FRONT
7	ACCESS	SERVICE FROM FRONT OF DISPLAY
8	WEIGHT	126 LBS [58 KG] (APPROX)
9	SHIPPING	SHIPPED AS A SINGLE UNIT
10	DIMENSIONS	FEET AND INCHES [MILLIMETERS]
11	PAINTED	SEMI-GLOSS BLACK

STRUCTURAL RATING		
1	DESIGN WIND PRESSURE "P" (CASE A)	P<= :100 PSF (ASD)
2	STANDARD/CODE	SEE DD4145274 FOR APPLICABLE DESIGN CODE
3	ALL CLIP ANGLES MUST BE USED TO MOUNT DISPLAY	

POWER RATING PER SINGLE FACE: FOR SIZING ELEC.SERVICE MAX REQ'D SHOWN				
TECHNOLOGY	COLOR	MAX WATTS	120VAC 1PH 50/60Hz (2 WIRES + GND) DOMESTIC	240VAC 1PH 50Hz (2 WIRES + GND) INTERNATIONAL SPECIAL ORDER
			LINE 1 (AMPS)	LINE 1 (AMPS)
GS6	RED	370	3.09	1.54
	AMBER	370	3.09	1.54
	RGB	566	4.72	2.36

VENTILATION REQUIREMENTS	
1	DISPLAY RELIES ON VENTILATION TO FUNCTION PROPERLY. INTAKES, LOCATED AT THE FRONT OF THE DISPLAY, MUST BE ABLE TO DRAW IN AIR AT A TEMPERATURE NO GREATER THAN 120° F.
2	IN ORDER TO ENSURE AMBIENT TEMPERATURE AIRFLOW IS MAINTAINED, NO PORTION OF THE VENTILATION OPENINGS ALONG THE FRONT OF THE DISPLAY MAY BE COVERED OR OBSTRUCTED IN ANY WAY.

INSTALL NOTES	
1	IN ORDER TO PRESERVE THE STRUCTURAL INTEGRITY OF THE DISPLAY CABINET, THE 90° ANGLE BETWEEN THE CABINET AND THE LIFTEYE MUST BE MAINTAINED - USING A SPREADER BEAM IS SUGGESTED. ALL EYEBOLTS MUST BE USED WHEN LIFTING.
2	1/2" LIFTEYES TO ASSIST WITH DISPLAY INSTALLATION. LIFTEYES MAY NOT BE USED FOR PERMANENT INSTALLATION. LIFTEYES MAY BE REMOVED.
3	MECHANICAL AND SIGNAL CONNECTIONS OCCUR EXTERNAL TO DISPLAY.
4	CLIP ANGLE FOR MOUNTING. CLIP ANGLES CAN BE ADJUSTED VERTICALLY 1 - 3/16" AS NEEDED DURING INSTALLATION. CLIP ANGLE CAN BE WELDED OR BOLTED TO STRINGER. ALL CLIP ANGLE LOCATION MUST BE USED.
5	DAKTRONICS IS NOT RESPONSIBLE FOR THE MOUNTING HARDWARE OR THE INTEGRITY OF THE MOUNTING STRUCTURE.
6	DAKTRONICS IS NOT RESPONSIBLE FOR THE MAIN ELECTRICAL DISCONNECT. SEE POWER RATINGS ABOVE.
7	SEE DWG-03097583 FOR SIGNAL & MTG DETAILS



1513 Central Ave South
Kent, Washington 98032

253-852-1354

www.evergreensign.com

DATE: 05-12-2022

Project Manager: CHZ

Drawn By: NST

Checked By:

Administrator:

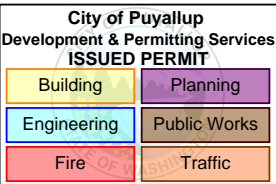
Revision Dates:

- ① 05-27-2022
- ② 06-13-2022
- ③ 09-28-2022
- ④ 11-02-2022
- ⑤ 11-14-2022
- ⑥ 12-30-2022

ALL MATERIALS IN THESE DRAWINGS REPRESENT THE SOLE PROPERTY OF EVERGREEN SIGN COMPANY AND CANNOT BE REPRODUCED, PUBLISHED OR USED IN ANY WAY WITHOUT WRITTEN PERMISSION OF EVERGREEN SIGN COMPANY

FERRUCCI JUNIOR HIGH

3213 WILDWOOD PARK DR.
PUYALLUP, WA 98374

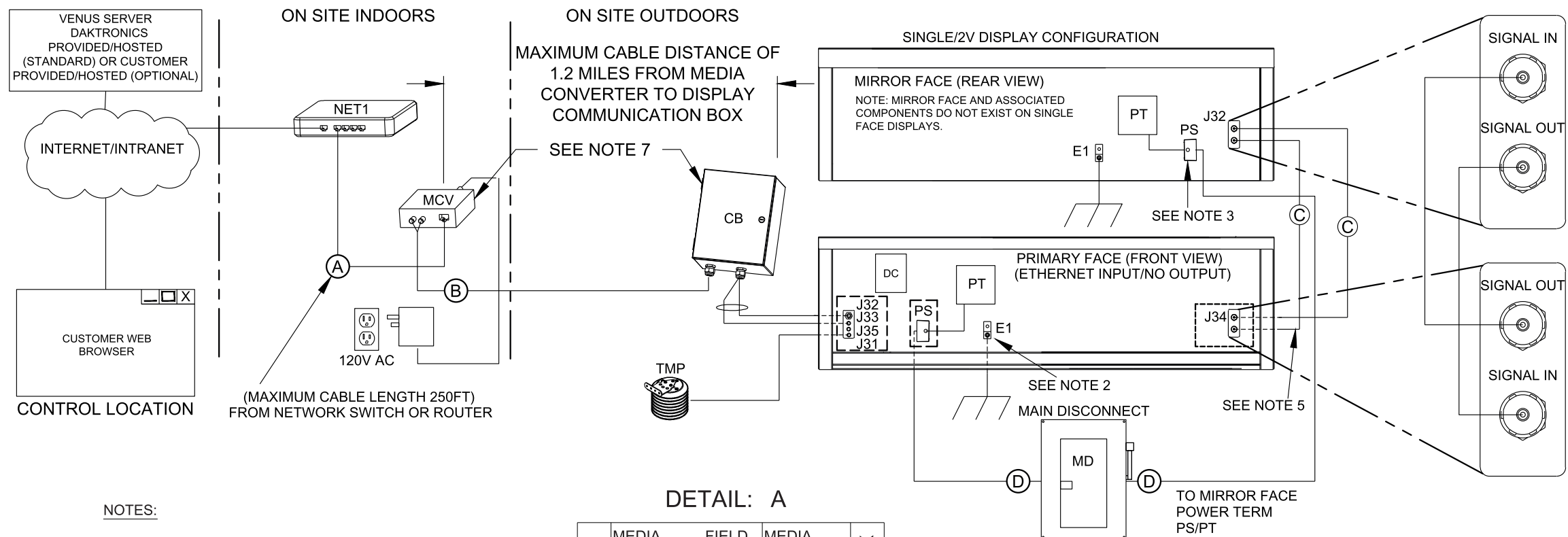


LED READERBOARD
LED DISPLAY SPECS

12402 FERRUCCI JR HIGH | LED READERBOARD GALAXY GS6 COMMUNICATION METHOD - FIBER ETHERNET



PROJECT:	SMALL MATRIX GS6
TITLE:	SYSTEM RISER DIAGRAM, FIBER ETHERNET COMM BOX
DATE:	07 JUL 15
SCALE:	NONE
DESIGN:	LSOPER
DRAWN:	LSOPER
JOB NO.	P1817
FUNC. TYPE - SIZE	R - 01 - A
REV	3092608
SHEET	1 OF 1
REV	01



- NOTES:
1. POWER FEEDER SIZED AS NEEDED, BY CUSTOMER. ALL WIRING TO MEET OR EXCEED LOCAL AND NATIONAL ELECTRICAL CODES.
- NOTE; SOME MODELS MAY BE MADE UP OF SECTIONS. ONE SECTION MAY RECEIVE POWER FOR SEVERAL SECTIONS. A SINGLE DISPLAY MAY INCLUDE MULTIPLE POWER ENTRANCES REQUIRING ADDITIONAL POWER FEEDS.
2. GROUND ROD CONNECTION LOCATED ON BACK OF DISPLAY. ALL DISPLAYS MUST BE GROUNDED PER ARTICLE 250 AND 600 OF THE NATIONAL ELECTRICAL CODE WITH NO MORE THAN 10 OHMS GROUND RESISTANCE.
3. POWER JUNCTION BOX LOCATED ON BACK OF DISPLAY. THE JUNCTION BOX IS ONLY LOCATED ON DISPLAYS THAT REQUIRE LESS THAN TWO 20 AMP CIRCUITS.
4. ACTUAL LOCATION OF JUNCTION BOX AND GROUND LUG VARIES. REFER TO SHOP DRAWING FOR LOCATION ON SPECIFIC MODEL.
5. QUICK CONNECT INTERCONNECT CABLE DOES NOT EXIST ON PRIMARY/PRIMARY CONFIGURATIONS. EACH PRIMARY DISPLAY REQUIRES A NETWORK CONNECTION.
6. MANUFACTURE PART NUMBER. OPTICAL CABLE CORP. BX04-080D-WLS-900-OFNR
7. ST FIBER MANUFACTURE PART NUMBER. AFL/FAST-ST-MM-62.5-100

DETAIL: A

NETWORK	MEDIA CONVERTR	FIELD CABLE	MEDIA CONVERTR	COMM BOX
	PIN		PIN	
	TX		RX	
	RX		TX	

COMPONENT IDENTIFICATION TABLE				
COMPONENT	DESCRIPTION	DAKTRONICS #	PROVIDED BY	INSTALLED BY
CB	FIBER ETHERNET COMMUNICATION BOX, INCL 25FT CABLE	0A-1327-1124	DAKTRONICS	CUSTOMER
DC	DISPLAY CONTROLLER	-	DAKTRONICS	FACTORY
MD	MAIN DISCONNECT	-	CUSTOMER	CUSTOMER
MCV	ETHERNET MEDIA CONV., 10/100BASE-TX TO 100BASSE-FX	A-2826	DAKTRONICS	CUSTOMER
NET1	NETWORK ROUTHER OR SWITCH	-	CUSTOMER	CUSTOMER
PS	POWER JUNCTION BOX (EXTERNAL POWER TERMINATION)	-	DAKTRONICS	FACTORY
PT	INTERNAL POWER TERMINATION PANEL	-	DAKTRONICS	FACTORY
TMP	TEMP SENSOR (OPTIONAL, INCLUDES 25 FT CABLE	0A-1151-0010	DAKTRONICS	CUSTOMER

CABLE IDENTIFICATION TABLE					
ID TAG	CABLE TYPE	DAKTRONICS PART NUMBER	MANUFACTURE (PART NUMBER)	PROVIDED BY	INSTALLED BY
(A)	CAT5E ETHERNET CABLE	W-1384	BELDEN (1592A)	CUSTOMER	CUSTOMER
(B)	4 FIBER CABLE, 62.5/125 GRADE, MULTIMODE	W-1376	SEE NOTE "6"	CUSTOMER	CUSTOMER
(C)	CABLE; 26' FIBER OPTIC, INDUSTRIAL LC-LC DUPLEX	W-2030	-	DAKTRONICS	CUSTOMER
(D)	POWER FEEDER SEE NOTE "1"	-	-	CUSTOMER	CUSTOMER



1513 Central Ave South
Kent, Washington 98032

253-852-1354

www.evergreensign.com

DATE: 05-12-2022

Project Manager: CHZ

Drawn By: NST

Checked By:

Administrator:

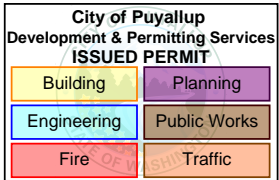
Revision Dates:

- ① 05-27-2022
② 06-13-2022
③ 09-28-2022
④ 11-02-2022
⑤ 11-14-2022
⑥ 12-30-2022

ALL MATERIALS IN THESE DRAWINGS REPRESENT THE SOLE PROPERTY OF EVERGREEN SIGN COMPANY AND CANNOT BE REPRODUCED, PUBLISHED OR USED IN ANY WAY WITHOUT WRITTEN PERMISSION OF EVERGREEN SIGN COMPANY

FERRUCCI JUNIOR HIGH

3213 WILDWOOD PARK DR.
PUYALLUP, WA 98374



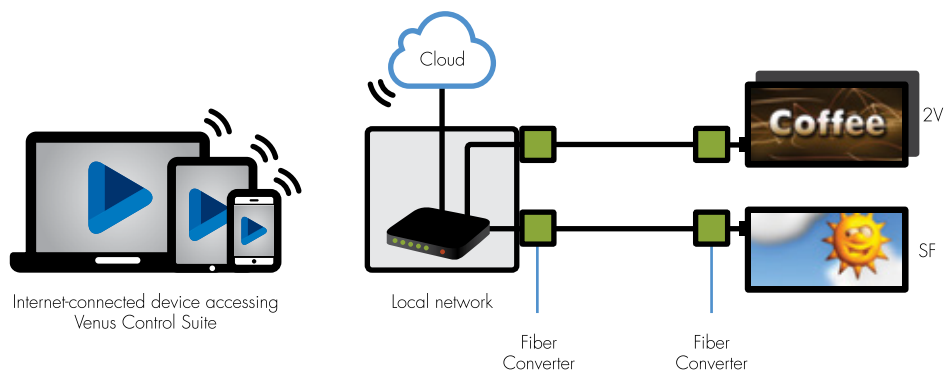
LED READERBOARD
COMMUNICATION METHOD

PRSG20230064

12402 FERRUCCI JR HIGH | LED READERBOARD FIBER ETHERNET PRODUCT SPECIFICATIONS



Fiber Ethernet is a communication interface allowing an ethernet network to communicate with the display via a Local Area Network (LAN).



When should Fiber Ethernet be used as a communication interface?

- › The highest reliability is required
- › For most outdoor applications
- › When electromagnetic interference is present
- › For communication distances greater than 100 m
- › It is designed to control the display from multiple computers

ADVANTAGES

- › Extend Network Distance: Two 10BASE-T to 10BASE-FL Media Converters used back-to-back extend the distance between two 10BASE-T devices up to 2 km (1.2 mi) using multi-mode fiber without a repeater
- › Integrate mixed cabling environments using either switched or shared Ethernet
- › Automatic Link Restoration re-establishes link in all network conditions
- › Automatically detects and configures the twisted pair port on the converter to the correct MDI or MDI-X configuration
- › Troubleshooting feature allowing the media converter to monitor both the fiber and copper RX ports for loss of signal

TECHNICAL SPECIFICATIONS

STANDARDS

IEEE Std 802.3™ 10BASE-T; 10BASE-FL

FIBER OPTIC CONNECTOR ST

Min TX PWR:

-19.0 dBm

Max TX PWR:

-14.0 dBm

RX Sensitivity:

-32.5 dBm

Max In PWR:

-7.2 dBm

Link Budget:

13.5 dB

LINK ALERT SWITCH

S1:

Enables/disables Link Pass Through
The Link Alert switch allows the user to enable or disable the Link Alert feature. Link Alert allows the media converter to monitor both the fiber and the copper Rx ports for loss of signal. When signal loss occurs, the media converter notifies the far end device of the link loss, which prevents the loss of valuable data unknowingly transmitted over an invalid link.

STATUS LED'S

PWR (Power):

On indicates connection to external AC power

Link:

On indicates unit is receiving link pulses from a compliant device

RX (Receive):

On indicates packets are being received

POWER

12VDC, 0.5A; Unregulated

PHYSICAL PROPERTIES

Size:

Outdoor device: 12"L x 8"W x 5"H
Indoor device: 4.5" L x 3" W x 1" H

Operating Temperature:

Outdoor device: -30 – 50 C;
Indoor device: 0 – 50 C;
5% – 90% humidity non-condensing

CERTIFICATIONS

Wall Mount Power Supply; UL Listed,
C-UL Listed (Canada) FCC Class A,
CISPR22/EN55022 Class A, EN55024,
EN61000 CE Mark



1513 Central Ave South
Kent, Washington 98032

253-852-1354

www.evergreensign.com

DATE: 05-12-2022

Project Manager: CHZ

Drawn By: NST

Checked By:

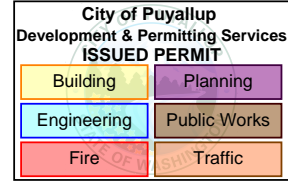
Administrator:

Revision Dates:

- ① 05-27-2022
- ② 06-13-2022
- ③ 09-28-2022
- ④ 11-02-2022
- ⑤ 11-14-2022
- ⑥ 12-30-2022

ALL MATERIALS IN THESE DRAWINGS
REPRESENT THE SOLE PROPERTY OF
EVERGREEN SIGN COMPANY AND CANNOT
BE REPRODUCED, PUBLISHED OR USED IN
ANY WAY WITHOUT WRITTEN PERMISSION
OF EVERGREEN SIGN COMPANY

FERRUCCI JUNIOR HIGH
3213 WILDWOOD PARK DR.
PUYALLUP, WA 98374



LED READERBOARD
FIBER ETHERNET SPECS

PRSG20230064