

C:\Users\JasonClements\Documents\02403_PUYALLUP_WA_192_L_ARCH_V20 JasonClements.rvt

ELECTRICAL SYMBOLS LEGEND

12.17.21

SYMBOLS APPLY ONLY WHEN USED ON DRAWINGS)	
SYMBOL	DESCRIPTION
	LIGHT FIXTURE (WALL MOUNTED/CEILING MOUNTED)
	LIGHT FIXTURE
	LIGHT FIXTURE, NIGHT LIGHT
	VOLUMETRIC LIGHT FIXTURE
	TRACK LIGHTING
	EXIT FIXTURE (WALL MOUNTED/CEILING MOUNTED)
	EMERGENCY LIGHT (WALL MOUNTED/CEILING MOUNTED)
	EMERGENCY LIGHT REMOTE HEADS (WALL MOUNTED/CEILING MOUNTED)
	SINGLE POLE SWITCH
	3-WAY SWITCH
	4-WAY SWITCH
	KEYED SWITCH
	DIMMER SWITCH
	VARIABLE SPEED SWITCH
	MANUAL MOTOR SWITCH
	SINGLE POLE OCCUPANCY SENSOR SWITCH
	DOUBLE POLE OCCUPANCY SENSOR SWITCH
	OCCUPANCY SENSOR SWITCH, FOUR-DIRECTION SENSING
	OCCUPANCY SENSOR SWITCH, ONE-DIRECTION SENSING
	RECEPTACLE, DUPLEX
	RECEPTACLE, DUPLEX, MOUNTED HORIZONTALLY
	RECEPTACLE, GFI
	RECEPTACLE, DUPLEX FLUSH FLOOR
	RECEPTACLE, DUPLEX ISOLATED GROUND FLUSH FLOOR
	RECEPTACLE, DOUBLE DUPLEX
	RECEPTACLE, DUPLEX ISOLATED GROUND
	RECEPTACLE, DOUBLE DUPLEX, ISOLATED GROUND
	RECEPTACLE, SIMPLEX TWIST LOCK, L5-15R, UNO
	RECEPTACLE, SIMPLEX TWIST LOCK, ISOLATED GROUND, L5-15R, UNO
	RECEPTACLE, DUPLEX TWIST LOCK, L5-15R, UNO
	RECEPTACLE, DUPLEX TWIST LOCK, ISOLATED GROUND, L5-15R, UNO
	RECEPTACLE, SPECIAL
	RECEPTACLE, SIMPLEX
	RECEPTACLE, PLUG-MOLD
	JUNCTION BOX (WALL MOUNTED/CEILING MOUNTED)
	THERMOSTAT (WALL MOUNTED/CEILING MOUNTED)
	ALARM JUNCTION BOX, (WALL MOUNTED/CEILING MOUNTED)
	ALARM JUNCTION BOX FOR REMOTE TEST/RESET (WALL MOUNTED/CEILING MOUNTED)
	SMOKE DETECTOR
	NON-FUSED DISCONNECT
	FUSED DISCONNECT
	EQUIPMENT CONNECTION POINT (PROVIDED WITH EQUIPMENT)
	CIRCUIT, CONCEALED IN WALLS OR CEILING, E INDICATES EXISTING WIRING
	CIRCUIT, CONCEALED IN SLAB FLOOR, E INDICATES EXISTING WIRING
	CIRCUIT, EXPOSED, E INDICATES EXISTING WIRING
	LOW VOLTAGE WIRING
	CONDUIT SLEEVE
	FLUSH MOUNTED PANELBOARD
	SURFACE MOUNTED PANELBOARD
	TELEPHONE / DATA BOX FOR ISD
	LOW VOLTAGE CABLE BOX FOR OTHER
	TELEPHONE, FLUSH FLOOR
	MOTOR
	TELEPOWER POLE
	PUSH BUTTON
	BUZZER
	SAIL SWITCH JUNCTION BOX
	HORN / STROBE
	DOOR HOLD OPEN
	TIME CLOCK
ABBREVIATIONS	
a, b, c	LOWER CASE LETTERS INDICATE SWITCHING CONFIGURATION
AF	ABOVE FINISHED FLOOR
AG	ABOVE FINISHED GRADE
CFG	CONDUIT
CCT	CIRCUIT
OC	CEILING FAN
GC	CASH WRAP
EC	ELECTRICAL CONTRACTOR
EF	EXHAUST FAN
HD	EXISTING TO REMAIN
EW	ELECTRIC WATER COOLER
GC	GROUND
GF	GENERAL CONTRACTOR
GF	GROUND FAULT EQUIPMENT PROTECTION
GF	GROUND FAULT CIRCUIT INTERRUPTER
HD	HAND DRYER
IG	ISOLATED GROUND
LCD	LIGHTING CONTROL UNIT
NL	NIGHT LIGHT
NTS	NOT TO SCALE
REC	REFRIGERATING ELECTRICAL CONTRACTOR
RF	REFRIGERATION CONTRACTOR
TR	RADIANT HEATER
SC	SECURITY CAMERA
RH	TAMPER RESISTANT
TYP	TYPICAL
UH	UNIT HEATER
UN	UNLESS NOTED OTHERWISE
WH	WATER HEATER
WP	WEATHER PROOF
WR	WEATHER RESISTANT

KEYNOTES

16.77

E.C. SHALL DISCONNECT, EXTEND, AND RECONNECT ALL ELECTRICAL CIRCUITRY FOR NEW OR RELOCATED EQUIPMENT. REFERENCE POWER PLANS AS APPLICABLE. VERIFY CONDITION OF BRANCH CIRCUIT, CONDUIT, AND WIRE PRIOR TO USE TO ENSURE THAT THEY MEET ALL U.L. RATINGS AND REPLACE AS REQUIRED. COORDINATE THIS PROCESS WITH CONSTRUCTION MANAGER TO MINIMIZE DOWNTIME. LABEL ALL ASSOCIATED PANELBOARD SCHEDULES TO REFLECT LOAD DESCRIPTIONS.

GENERAL POWER NOTES

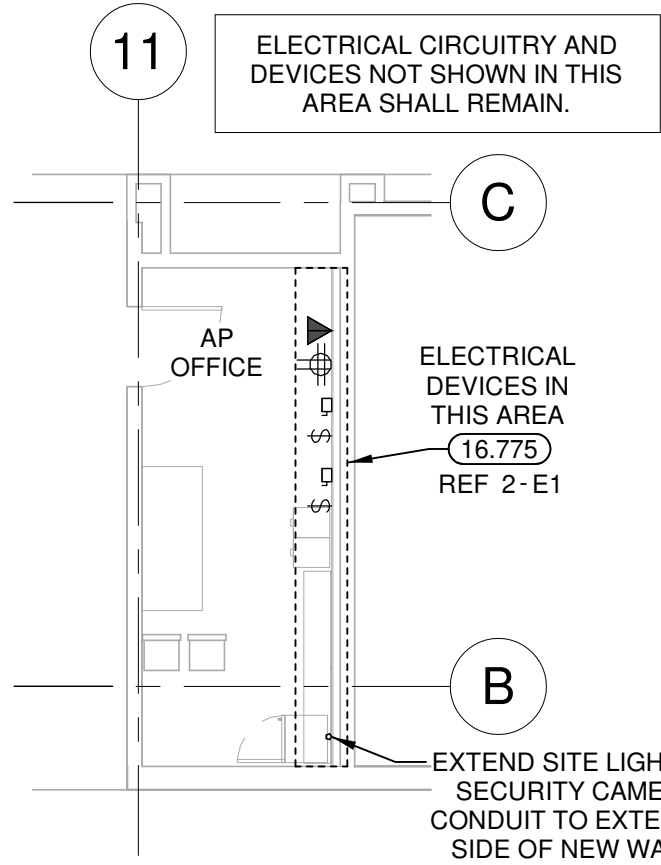
12.17.21

1. TELEPOWER POLE(S): MOUNT JUNCTION BOX(ES) TO TOP SIDE OF BOTTOM CHORD OF BAR JOIST. INSTALL TELEPOWER POLE(S) TO TOP OF JOIST. ATTACH TO JUNCTION BOX. PROVIDE UNISTRUT SUPPORTS AND HARDWARE TO SECURE TELEPOWER POLE TO JOIST STRUCTURE. REF POWER POLE CONNECTION DETAIL.
2. PROVIDE LIQUID-TIGHT FLEXIBLE METAL CONDUIT AND WIRING FROM DISCONNECT SWITCH OR JUNCTION BOX TO EQUIPMENT KNOCKOUT OR ELECTRICAL CONNECTION POINT.
3. WHERE EQUIPMENT NAMEPLATE PROTECTION IS PROVIDED, RATING SHALL BE PROVIDED. NOTIFY WALMART CONSTRUCTION MANAGER IMMEDIATELY TO COORDINATE RESOLUTION.
4. ELECTRONIC FIRE PROTECTION/SECURITY ALARM BOXES AND CONDUITS SHOWN ON POWER PLANS SHALL BE PROVIDED BY THE CONTRACTOR. CONTRACT IN ADDITION, UNLESS NOTED OTHERWISE, THE FOLLOWING GENERAL NOTES APPLY:
 - A. ALL JUNCTION BOXES SHALL BE 4"x4"x2-1/8" MINIMUM.
 - B. ALL CONDUIT SHALL BE 3/4" MINIMUM WITH PULL WIRE AND INSULATING BUSHINGS AT END OF VERTICAL REWAYCEN RUN.
 - C. VERTICAL RACEWAYS AND ALARM BOXES SHALL BE EITHER CONCEALED INSIDE WALL OR SURFACE MOUNTED TO (MATCH JUNCTION BOX DETAIL); ALL CONDUIT SHALL BE NOTED AND TURNED 90-DEGREES AT TOP SIDE OF BOTTOM CHORD OF BAR JOIST AND EXTENDED DOWNWARD TO ALL CONNECTION ACCESSIBLE BY VERTICAL FLOOR JOIST LIFT.
5. UPON COMPLETION OF ELECTRICAL INSTALLATION AND PRIOR TO ENERGIZING CIRCUIT:
 - A. INSPECT WIRE AND CABLE FOR PHYSICAL DAMAGE.
 - B. PERFORM CONTINUITY TEST.
 - C. VERIFY PROPER PHASING CONNECTION TO ALL THREE PHASES AND GROUND.
6. CONDUIT AND WIRING TO RTUS AND AHU'S SHALL BE THROUGH EQUIPMENT CURB. NO ROOF PENETRATIONS OR CONDUITS RULED ACROSS ROOF ARE PERMITTED.

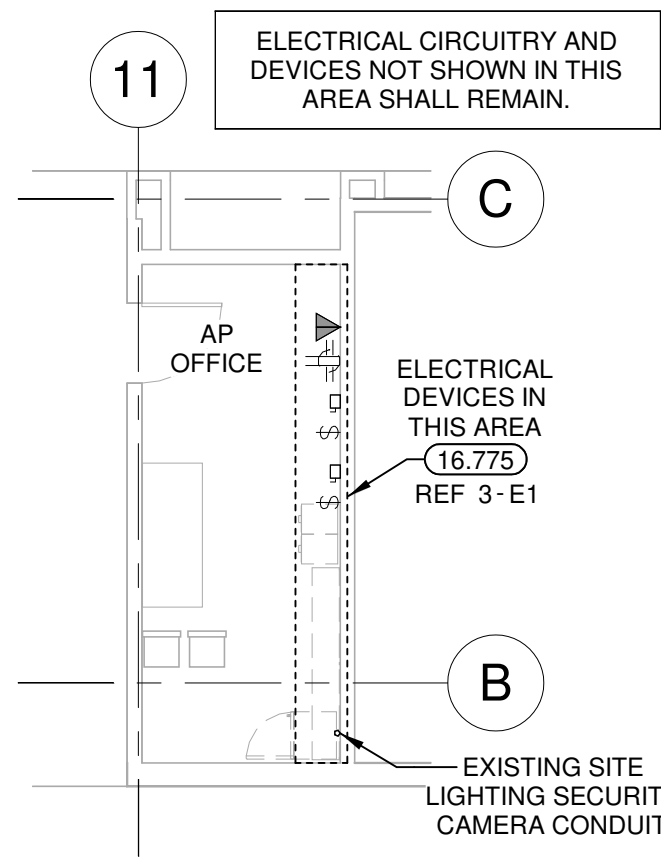
GENERAL NOTES

08.28.20

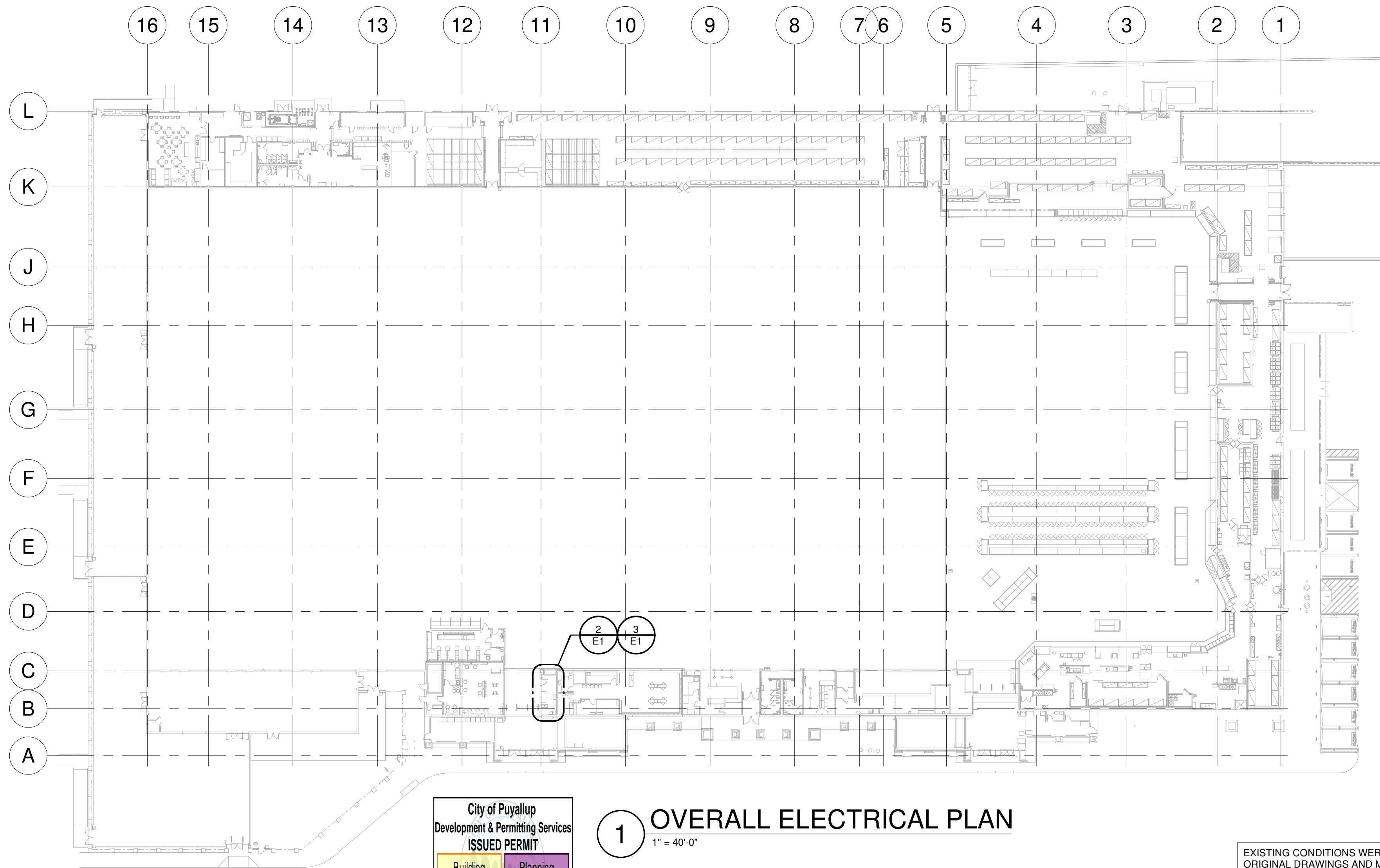
- FURNISH AND INSTALL ALL MATERIALS, EQUIPMENT, AND LABOR, FOR A COMPLETE INSTALLATION IN ALL RESPECTS, READY FOR THE NEXT TRADE TO INSTALL. THE CONTRACTOR SHALL COMPLY WITH ALL CITY, STATE AND LOCAL CODES, AND MANUFACTURERS' RECOMMENDATIONS. PAY ALL NECESSARY FEES AND PERMITS.
- NO CIRCUITRY SHALL BE ALLOWED TO BE ROUTED ACROSS THE ROOF OR THE EXTERIOR SIDE OF THE EXTERIOR WALLS. THE CONTRACTOR SHALL BE RESPONSIBLE FOR THE FOLLOWING:
- A. ARRANGE ALL WORK TO MINIMIZE DISRUPTIONS TO STORE OPERATIONS. COORDINATE ALL DISRUPTIONS WITH WALMART PERSONNEL MANAGING THE PROJECT.
- B. CONTRACTOR SHALL VERIFY ALL WALL FINISH THICKNESS BEFORE INSTALLING BOXES. FURNISH AND INSTALL EXTENDED PANELBOARDS TO EXTEND THE THICKNESS OF THE WALLS.
- C. CONTRACTOR SHALL VERIFY THAT ALL AFFECTED PANELBOARDS HAVE CIRCUIT BREAKER KNOCKOUTS PROPERLY COVERED WITH A MATCHING FINISH TO THE EXISTING CONDITION, ALLOWING NO ACCESS TO LIVE PARTS.
2. PROVIDE SEALS AT RACEWAY PENETRATIONS AS FOLLOWS:
- A. FIRE RATED WALLS: SEAL PER SPECIFICATIONS FOR FIRE STOPPING.
- B. NEUTRALIZATION AREA: SEAL PER MECHANICAL DETAIL.
- C. FREEZER/COOLER BOXES: SEAL WITH EXPANDING FOAM INSULATION.
- D. EXTERIOR: REFER TO ARCHITECTURAL DOCUMENTS FOR SEALING REQUIREMENTS AT ALL EXTERIOR MOUNTED DEVICES, FIXTURES, ENCLOSURES, AND RACEWAY PENETRATIONS.
3. PROVIDE A SEPARATE EQUIPMENT GROUNDING CONDUCTOR (SIZE PER TYPE AND VOLTAGE OF EQUIPMENT) TO EACH PANELBOARD, ISOLATED GROUND CIRCUITS, OR AS SHOWN ON PLANS. CONDUIT SHALL BE SIZED PER NEC BASED ON THW 600 WLL COPPER CONDUCTOR EXTERIOR RATED TO 100% OF THE EQUIPMENT GROUNDING CONDUCTOR.
4. WIRING DEVICES: DEVICE MOUNTING HEIGHTS ARE FROM FINISHED FLOOR TO CENTER OF OUTLET BOX UNLESS NOT OTHERWISE ON PLANS. COORDINATE THE JOINT MEMBER UTILITIES WITH MANDATORY NOTIFICATIONS.
- A. SWITCHES 44"
- B. RECEPTACLES 20"
- C. VOICE DATA WITH ELEMENT SUPPLIER WIRING DIAGRAMS.
5. WIRING SHALL INCLUDE FINAL CONNECTION TO ALL EQUIPMENT IN CONFORMANCE WITH THE SUPPLIER'S WIRING DIAGRAMS.
6. CONTRACTOR IS RESPONSIBLE FOR PROVIDING AN UPDATED AND COMPLETE TYPEDWRITTEN CIRCUIT IDENTIFICATION SCHEDULE FOR EVERY PANELBOARD AFFECTED BY THIS PROJECT.
7. NEW OVERCURRENT PROTECTIVE DEVICES INSTALLED IN EXISTING PANELBOARDS OR DISTRIBUTION BOARDS SHALL MATCH THE TYPE AND AMP RATING OF EXISTING OVERCURRENT PROTECTIVE DEVICES.
8. BRANCH CIRCUIT CONDUCTORS SHALL BE MINIMUM #12 AWG UNLESS NOT OTHERWISE IN SCHEDULES. WHERE 20A BRANCH CIRCUITS HAVE 8 AND LARGER WIRE SPECIFIED, #10 AWG WIRE SHALL BE USED FOR THE FINAL CONNECTION (15-FT MAXIMUM).
9. WHERE BRANCH CIRCUITS ARE GROUPED, SIZE CONDUIT AND DERATE CURRENT CARRYING CAPACITIES PER NEC.
10. PROVIDE UL LISTED HANGING TIES ON ALL MULTIWIRE BRANCH CIRCUITS PER NEC REQUIREMENTS.
11. SUPPORTS FROM STRUCTURE: NO ATTACHMENT OF ANY TYPE PERMITTED TO BRIDGING OR JOINT MEMBER MEMBERS. UTILIZE ONLY THE TOP AND BOTTOM CHORDS FOR SUPPORTING THE ELECTRICAL SYSTEM INSTALLATIONS.
12. SURFACES SHOWN ON COOLER/FREEZER PANELS SHALL BE DECEIVED WITHOUT UNLESS NOT OTHERWISE. SEAL DEVICES TO COOLER/FREEZER PANELS WITH SILICONE SEALANT.
13. SURFACE MOUNTED CONDUIT ON COOLER/FREEZER PANELS OR IN PANELS SHALL BE SECURED TO THE PANELS WITH A MINIMUM 1/2" STANDOFF. CONDUIT HANGERS TO ALLOW FOR CLEANING.
14. ONLY FEEDER CIRCUITS NOTED ON THE ONE LINE DIAGRAM AND BRANCH CIRCUITS NOTED BY LEGEND SHALL BE INSTALLED UNDER SLAB. PROVIDE EXTERIOR COATED GFCI BENDS ON ALL CONDUIT PENETRATING 45 DEGREES OR MORE TO THE SLAB. REFER TO SPECIFICATION SECTION 16.100 FOR UNDER SLAB.
15. SEISMIC ZONE REQUIREMENTS: PROVIDE EXPANSION COUPLINGS AND BRACING FOR ELECTRICAL EQUIPMENT AS REQUIRED BY LOCAL CODES.
16. EXISTING ELECTRICAL AND ALARM:
- A. DEMOLITION OF EXISTING ELECTRICAL CONSTRUCTION INTERRUPTS EXISTING ELECTRICAL CIRCUITS FEEDING EXISTING EQUIPMENT, DEVICES, OR LIGHTING TO REMAIN, BUT NOT SHOWN ON PLANS. PROVIDE DEMOLITION AND MATERIALS TO REWORK CIRCUITRY, AS REQUIRED, TO MAINTAIN EXISTING OPERATION. IF DEMOLITION OR NEW CONSTRUCTION WILL DISRUPT EXISTING OPERATIONS, THE CONTRACTOR SHALL PROVIDE TELEPHONE, PARKING (LIGHTING CIRCUITRY, ETC.) PROVIDE ALL MATERIALS AND LABOR AS REQUIRED TO REROUTE, SLEEVE, OR OTHERWISE REPAIR THESE SERVICES TO MAINTAIN THEIR EXISTING OPERATION.
- B. EXERCISE CAUTION AROUND ALARM AND SECURITY CABLES DURING DEMOLITION. PROVIDE PROTECTIVE MEASURES TO TRIM AND SECURITY CABLES FROM ACCIDENTAL DAMAGE SO THAT SYSTEMS REMAIN OPERATIONAL AT ALL TIMES.
- C. DISPOSE OF ALL REMOVED MATERIALS, UNLESS OTHERWISE NOTED.
17. EXISTING ELECTRICAL DEMOLITION:
- A. GENERAL: REMOVE OR RELOCATE EXISTING ELECTRICAL EQUIPMENT, CONDUIT AND CONDUCTORS AS INDICATED ON PLANS. DEMOLITION SHALL BE PERFORMED IN A MANNER THAT REMOVES ALL PANELBOARDS, DISCONNECT SWITCHES, BOXES, RELAYS, TIME SWITCHES, LIGHTS, DEVICES, ETC., WHICH WILL NOT BE REUSED.
- B. SALES FLOOR: REMOVE UNUSED POWER DROP CONDUIT, CONDUCTORS AND RELATED DEVICES SERVING SALES AREA. CONDUCTORS AS BEING RELOCATED OR REMOVED. EXISTING CONDUIT AND CONDUCTORS MAY BE REUSED FOR NEW POWER SERVICE. REUSE OF EXISTING PIPING AND CONDUIT PER LOCAL REQUIREMENTS INDICATED.
- C. CONDUIT AND WIRING TO BE ABANDONED IN CEILING SPACES AND OTHER NON-PUBLIC AREAS (IE. THROUGH STOCKROOM DEMOLITION, THROUGH STOCKROOMS, THROUGH STOCKING LEAVING RAISES) IN PLACE. CONDUIT TO BE ABANDONED IN WALLS OR FLOORS SHALL BE REMOVED BACK TO FINISHED SURFACE AND BE CARPED INSIDE. REPAIR SURFACES TO MATCH ADJACENT.
- D. ALL CIRCUIT BREAKERS SERVING BRANCH CIRCUITS TO BE REMOVED. EXCEPT: DISTRIBUTION AND POWER SWITCH BREAKER AND REPLACE WITH FILLER PLATE. EXCEPTION: DISTRIBUTION AND POWER SWITCH BREAKERS SHALL BE ETR RELOCATED. PROVIDE TYPEDWRITTEN CIRCUIT IDENTIFICATION, "SPARE" CIRCUIT BREAKER IN THE "OFF" POSITION TO LOOK "SPARE" CIRCUIT BREAKER IN THE "OFF" POSITION. UPDATE TYPEDWRITTEN CIRCUIT IDENTIFICATION SCHEDULE AS "SPACE" OR "OFF".
- E. DEMOLISHED FLUORESCENT LIGHT FIXTURES: REFER TO SPECIFIED SITE DEMOLITION SPECIFICATION FOR DISPOSAL OF LIGHT FIXTURE.
- F. BUILDING COMPONENTS ABANDONED BY THE SCOPE OF WORK SHALL BE SECURED TO PREVENT FALLING, LOOSENING, OR DAMAGE TO ADJACENT AREAS.
18. DATA AND PHONE CONDUIT INSTALLATION MILESTONE DATE: ALL RACEWAY AND CONDUIT SLEEVES FOR DATA AND PHONE CABLEING TO BE INSTALLED 3 WEEKS PRIOR TO CONTRACT SUBSTANTIAL COMPLETION DATE.
19. ETHERNET CABLE:
- A. DEMOLITION AND INSTALL CONDUIT BOXES AS SHOWN ON PLANS. PROVIDE CONDUIT AS REQUIRED BY LOCAL CODES AND/OR ORDINANCES.
- B. ETHERNET CABLE IS FURNISHED BY OTHERS.
- C. ELECTRICAL CONTRACTOR SHALL INSTALL CABLE IN POWER POLES.
- D. ELECTRICAL CONTRACTOR SHALL INSTALL OTHER CABLE AS DIRECTED BY WALMART CONSTRUCTION MANAGER.



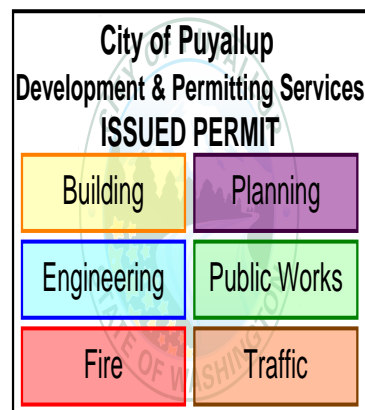
3 AP OFFICE POWER PLAN



2) AP OFFICE DEMO POWER PLAN
1/8" = 1'-0"



1 OVERALL ELECTRICAL PLAN



PRCTI20230108

EXISTING CONDITIONS WERE TAKEN FROM ORIGINAL DRAWINGS AND MAY NOT REFLECT EXACT "AS-BUILT" CONDITIONS. CONTRACTOR SHALL FIELD VERIFY ALL EXISTING CONDITIONS PRIOR TO SUBMITTING FINAL BIDS. CONTRACTOR SHALL CAREFULLY COORDINATE NEW WORK AND DEMOLITION WITH ALL OTHER DISCIPLINES AND EXISTING CONDITIONS. TYPICAL OF ALL ELECTRICAL SHEETS.

EACH SUBCONTRACTOR IS RESPONSIBLE FOR HAVING A THOROUGH KNOWLEDGE OF ALL DRAWINGS AND SPECIFICATIONS IN THEIR RELATED FIELD. THE FAILURE TO ACQUAINT THEMSELVES WITH THIS KNOWLEDGE DOES NOT RELIEVE THE RESPONSIBILITY OF PERFORMING THE WORK PROPERLY. NO ADDITIONAL COMPENSATION SHALL BE ALLOWED BECAUSE OF CONDITIONS THAT OCCUR DUE TO FAILURE TO FAMILIARIZE WORKERS WITH THIS KNOWLEDGE. TYPICAL OF ALL ELECTRICAL SHEETS.



2809 Ajax Avenue Suite 100
Rogers Arkansas 72758
Phone: 479.636.3545
Fax: 479.636.1209

Engineer of Record
Keith Allen Williams, P.E.
Washington License No. 43345

Engineer of Record
Keith Allen Williams, P.E.
Washington License No. 43345

THIS DRAWING WAS PREPARED FOR
USE ON A SPECIFIC SITE AT:
PUYALLUP, WASHINGTON
CONTEMPORANEOUSLY WITH ITS ISSUE
DATE ON 02-01-2023 AND IT IS NOT
SUITABLE FOR USE ON A DIFFERENT
PROJECT SITE OR AT A LATER TIME. USE
OF THIS DRAWING FOR REFERENCE OR
EXAMPLE ON ANOTHER PROJECT
REQUIRES THE SERVICES OF PROPERLY
LICENSED ARCHITECTS AND ENGINEERS.
REPRODUCTION OF THIS DRAWING FOR
REUSE ON ANOTHER PROJECT IS NOT

CONSULTANTS

Walmart
PUYALLUP, WASHINGTON
310 31ST AVENUE SE
STORE NO: 2403-282

2023 SPECIAL PROJECT

ISSUE BLOCK

[illegible]

CHECKED BY:

DRAWN BY: K

SHANNON ST. 19

PROTOCOL CYCLE: 12-16-20



Exp: 01/10/2024
02/02/2023

DOCUMENTS THAT DO NOT
HAVE THE ARCHITECT OR
ENGINEER OF RECORD SEAL
AND SIGNATURE SHALL BE
CONSIDERED NOT FOR
CONSTRUCTION

ELECTRICAL PLANS

SHEET:

E1