

2 3 4 5 6 7

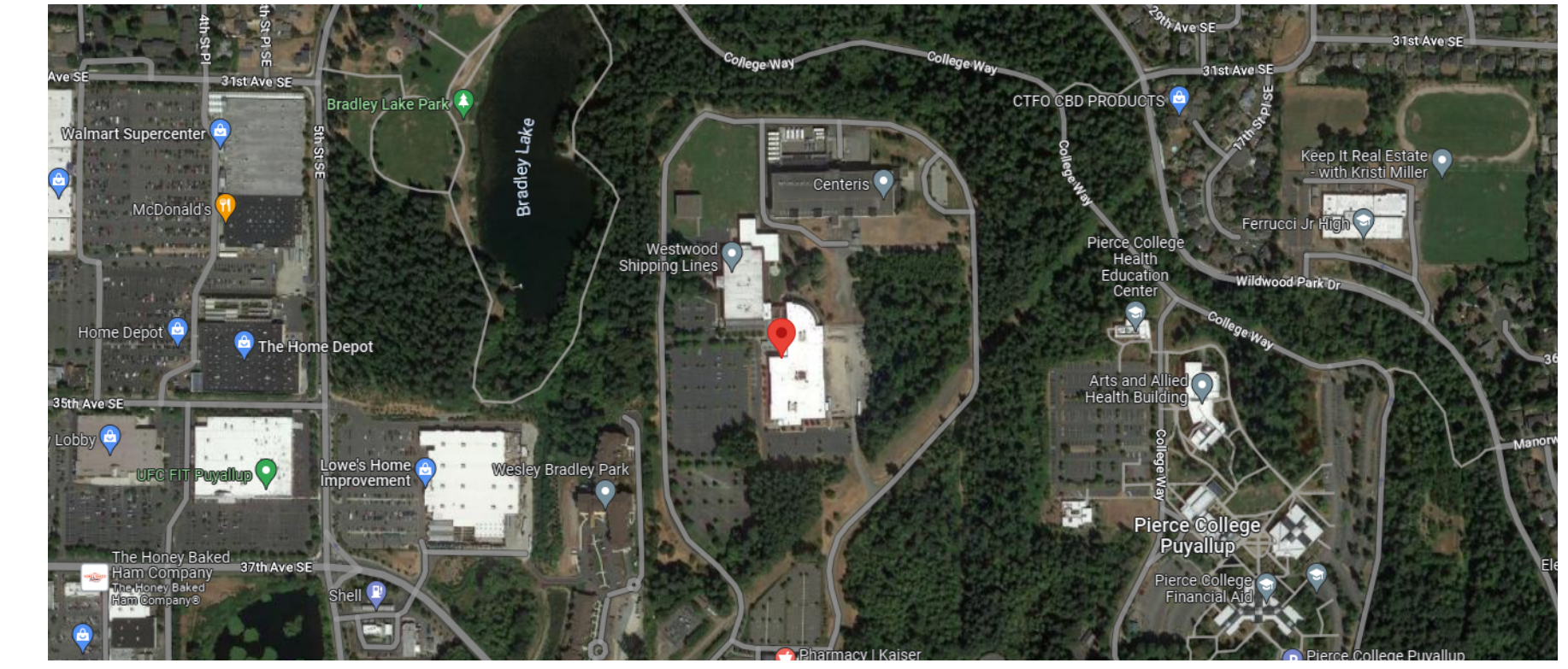
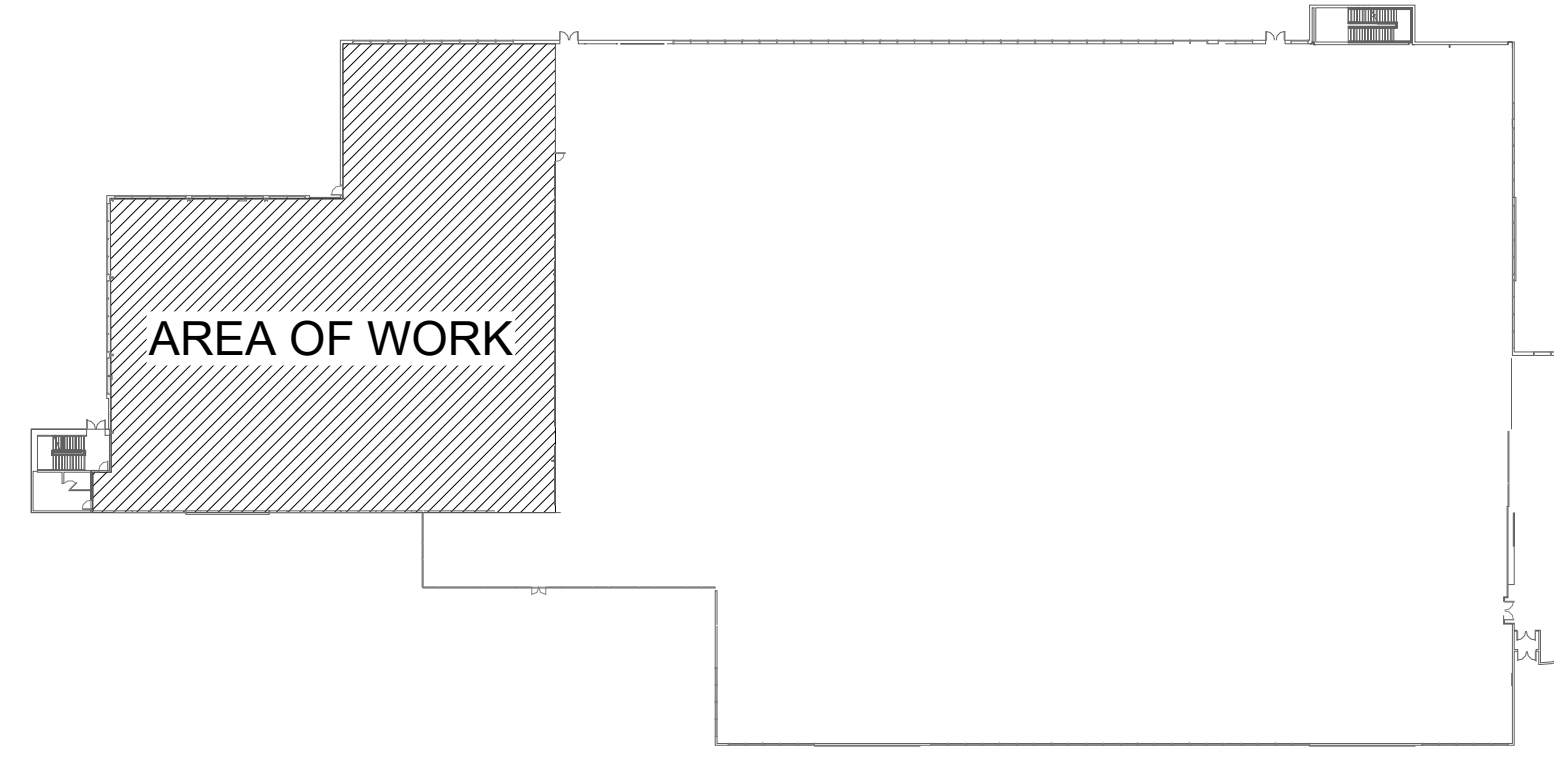
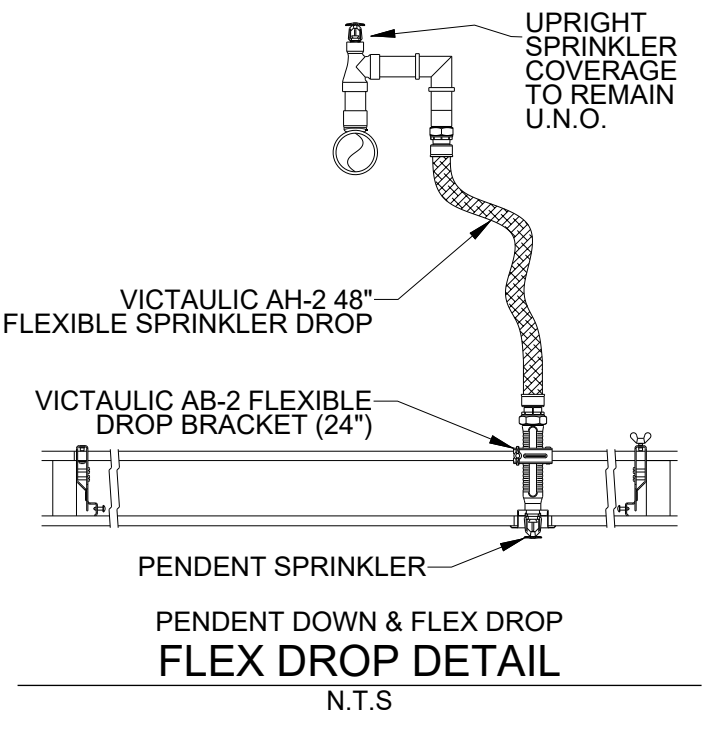
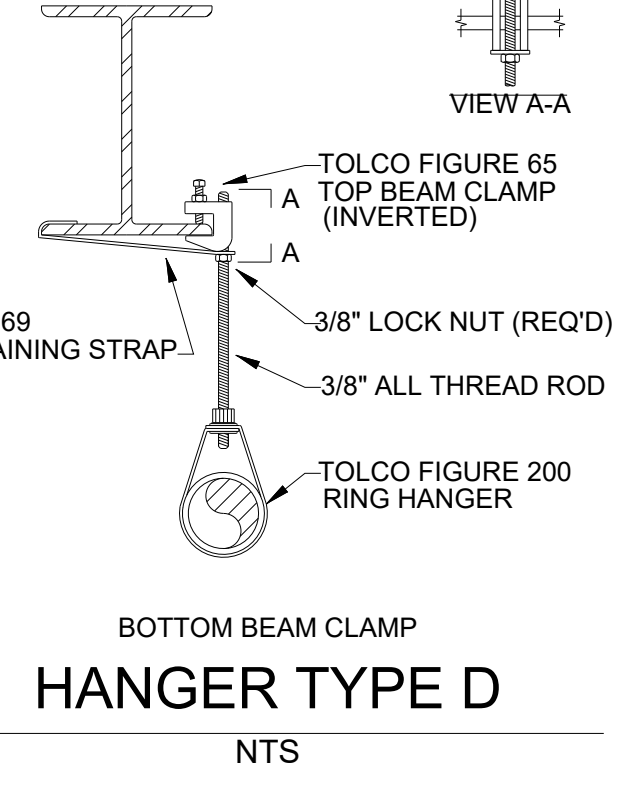
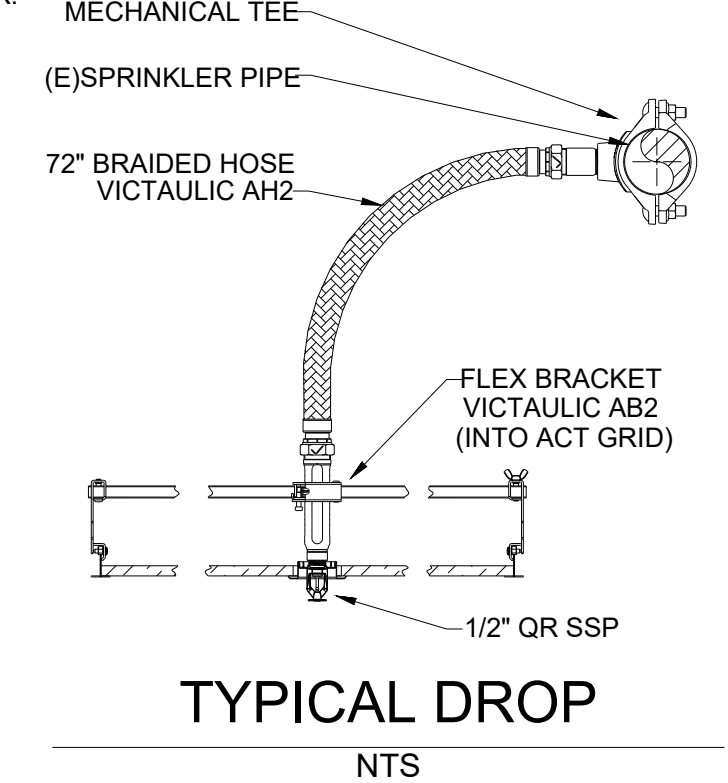
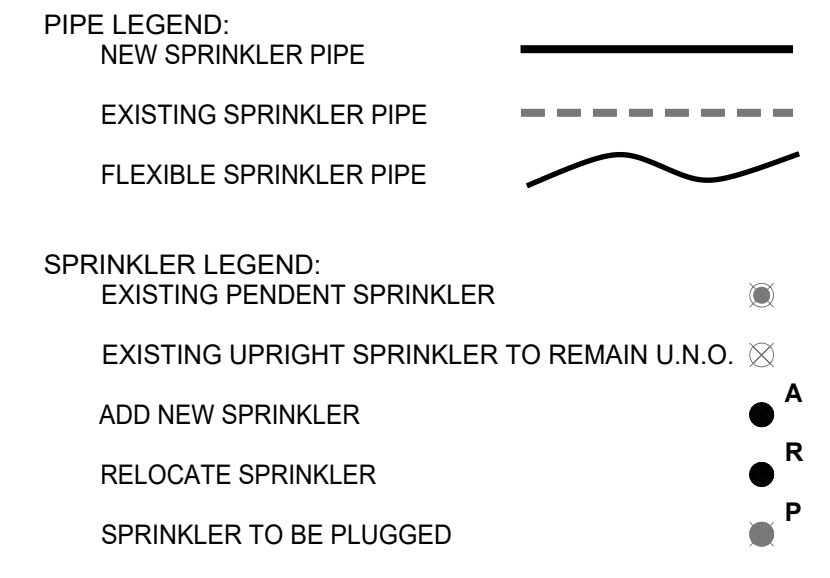


**SCOPE OF WORK:**  
ADD AND RELOCATE SPRINKLERS AS REQUIRED FOR NEW WALLS AND CEILINGS.

**GENERAL NOTES:**  
1. ALL MATERIAL AND EQUIPMENT TO BE NEW AND UL AND/OR FM APPROVED.  
2. PIPING DIMENSIONS ARE CUT LENGTH.  
3. PIPE HANGERS AND METHOD OF HANGING TO BE IN ACCORDANCE WITH NFPA #13 (2019).  
4. PIPING SHALL BE IN ACCORDANCE WITH NFPA #13 (2019).  
5. JOINING OF PIPE AND FITTINGS, THREADED AND WELDED, SHALL BE IN ACCORDANCE WITH NFPA #13 (2019).  
6. OWNER TO PROVIDE ADEQUATE HEAT TO PREVENT WATER IN PIPES FROM FREEZING IN AREAS PROTECTED BY A WET PIPE SPRINKLER SYSTEM.  
7. STRUCTURAL ADEQUACY OF THE BUILDING TO SUPPORT THE SPRINKLER PIPING IS THE RESPONSIBILITY OF THE OWNER AND/OR HIS STRUCTURAL REPRESENTATIVE.  
8. ALL FIRE ALARMS, WIRING AND MONITORING ARE TO BE INSTALLED BY OTHERS.

**DESIGN NOTES:**  
1. DESIGN AND SPRINKLER SPACING PER NFPA #13 (LIGHT HAZARD).  
2. PLAN SUBMITTAL TO AND APPROVAL BY .  
3. MATERIALS PER NFPA #13 STANDARDS AS SELECTED BY FSI.  
4. TESTING PER NFPA #13 AND .

**FIELD NOTES:**  
1. ALL NEW PIPING TO BE BLACK, SCHEDULE 40 WITH BLACK, DUCTILE IRON THREADED FITTINGS, OR BLACK, DYNA FLOW, WITH ARGCO GROOVED FITTINGS.  
2. SPRINKLERS IN ACT TYPE CEILINGS TO BE INSTALLED ON 1" X 1/2" FLEXIBLE HOSE CONNECTIONS.  
3. ARMOVERS SUPPLYING UPRIGHTS LONGER THAN 2'-0" SHALL HAVE A HANGER.  
4. ARMOVERS SUPPLYING PENDANTS LONGER THAN 1'-0" SHALL HAVE A HANGER.  
5. TYPICAL HANGER TO BE SAMMY GST-20 (UNLESS NOTED OTHERWISE).  
6. MAX SQ FT PER SPRINKLER = 225 SQ FT.



**FIRST FLOOR - PIPING PLAN**  
SCALE: 1/8" = 1'-0"

**CERTIFICATE OF COMPETENCY**  
FIRE PROTECTION SPRINKLER SYSTEMS  
Michael Paul Moffett  
4513-0612-C Level 3  
Fire Sprinklers Incorporated  
FIRESI988RJ  
4-4-23  
Expires 2/21/23

**FSI**  
WA CL# FIRESI988RJ  
1524 45TH STREET EAST,  
SUITE 102  
SUMNER, WA 98390  
WWW.FIRESPRINKLERSINC.COM

**DRAWN BY:** MYM  
**REVIEWED BY:** MPM  
**DATE:** 3/21/2023  
**SCALE:** AS NOTED  
**AHJ:** CITY OF PUYALLUP

**REVISIONS:**

REV#	DATE	DESCRIPTION

**HYDRAULIC DESIGN INFO**  
THIS SYSTEM IS HYDRAULICALLY DESIGNED  
THIS SYSTEM IS NOT HYDRAULICALLY DESIGNED - FLOW TEST -

**STATIC:** -  
**RESIDUAL:** -  
**GPM FLOWING:** -  
**DATE & TIME:** -

**SPRINKLER LEGEND**

SYM	MFR	VIKING	SIN	RESP	QR	SPP	K-FACT	TEMP	FINISH	ESC	QTY
●			VK9021	QR	SPP		5.6	155	7/2"	CH	94

**CENTRAL PIERCE FIRE & RESCUE TI**  
1015 39TH AVE SE SUITE 120  
PUYALLUP, WA 98374

**CONTRACT WITH:**  
**JTM CONSTRUCTION**  
5900 AIRPORT WAY S SUITE 110  
SEATTLE, WA 98108

**HANGER LEGEND:**

---	CPVC HANGER
---	TOP BEAM CLAMP W/ STRAP
---	HILTI KWIK HUS-E2
---	SAMMY SUPER SCREW (SS20/30)
---	SAMMY SIDEWINDER (SWDR 516)
---	TRAPEZE

**DRAWING SYMBOLS:**

+	FLEXIBLE GROOVED COUPLING	A.1	WELDED PIPE TAG
+	RIGID GROOVED COUPLING	#1	BRANCHLINE NUMBER
---	PIPE HANGER (SEE CHART)	1/9-0	PIPE SIZE & LENGTH CUT
---	END OF LINE RESTRAINT	X	HYDRAULIC NODE TAG
---	SEISMIC BRACE	★	10'-10" FF & ELEVATION DATUM

**JOB NUMBER:** 4793  
**SHEET NUMBER:** FP1

TOTAL THIS SHEET = 105