

**GENERAL REV 48 NOTES:**

- EXISTING DEVICE LOCATIONS AND WIRING ARE SHOWN LIGHT AND ARE BASED UPON RECORD DRAWING INFORMATION PROVIDED BY OTHERS. FIELD VERIFY ALL LOCATIONS AND CONNECTIONS TO EXISTING EQUIPMENT. CONTRACTOR TO RED LINE AND NOTE ANY AND ALL CHANGES ON THE RECORD DRAWING SET.

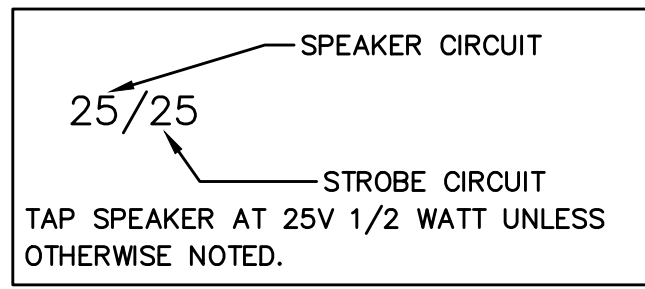
**REV 48 FLAG NOTES:**

- 48 1** EXISTING PRE-ACTION PANEL AND ALL ASSOCIATED WIRING AND DEVICES ARE TO BE REMOVED. 120VAC CIRCUIT TO BE RETAINED FOR CONNECTION TO NEW 4007ES PRE-ACTION PANEL.
- 48 2** EXISTING DEVICE TO BE REMOVED AND RETAINED FOR REINSTALLATION AFTER DEMOLITION PHASE. REMOVE UNNECESSARY WIRING AND MAINTAIN CIRCUIT INTEGRITY. RELOCATED END OF LINE RESISTORS AS APPLICABLE.
- 48 3** BREAK NETWORK CABLE AT THIS LOCATION AND LOOP TO NEW 4007ES PRE-ACTION RELEASING PANEL. IF THIS IS NOT POSSIBLE AT THIS LOCATION, LOOP NETWORK CABLE TO CLOSET FACD NODE.
- 48 4** REINSTALL EXISTING DEVICE REMOVED DURING DEMOLITION. CONNECT AS SHOWN.

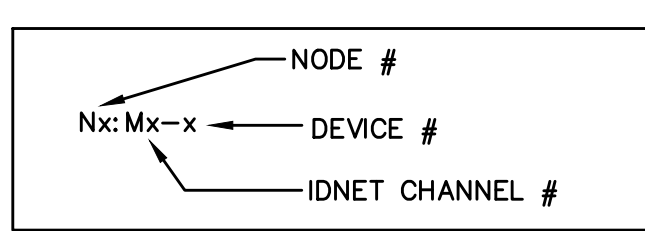
Symbol	Description	Part #	Backbox
[Symbol]	Multicandela Wall Speaker/Strobe - White	4906-9153	5" sq 2.875" deep w/ ext ring 4"sq adapter by EC
[Symbol]	Multicandela Ceiling Speaker/Strobe - White	4906-9154	5" sq 2.875" deep w/ ext ring 4"sq adapter by EC
[Symbol]	Multicandela Wall Strobe - White	4906-9103	4" sq by EC
[Symbol]	Multicandela Ceiling Strobe - White	4906-9102	4" sq by EC
[Symbol]	Wall Speaker - White	4902-9717	5" sq 2.875" deep w/ ext ring 4"sq adapter by EC
[Symbol]	Ceiling Speaker - White	4902-9721	5" sq 2.875" deep w/ ext ring 4"sq adapter by EC
[Symbol]	Addressable Manual Station	4099-9003 w/ 5111100 Cover	4" sq 2 1/8" deep w/ sq ring by EC
[Symbol]	Addressable Manual Station Suppression	4099-9015 w/ 4099-9802 Label Kit	4" sq 2 1/8" deep w/ sq ring by EC
[Symbol]	TrueAlarm Smoke Sensor	4098-9714 w/ 4098-9792 Base	4" oct by EC
[Symbol]	TrueAlarm Heat Sensor	4098-9733 w/ 4098-9792 Base	4" oct by EC
[Symbol]	Heat Detector - 135FT	4098-9756	4" self-contained
[Symbol]	TrueAlarm Duct Sensor	4098-9756	self-contained
[Symbol]	Remote LED w/Test	2098-9806	sq by EC
[Symbol]	Duct Detector Relay	4098-9843	4"sq w/sg & cover by EC
[Symbol]	Beam Smoke Detector - Transmitter	BEAM1224	Surface Box w/BEAMSK
[Symbol]	Beam Smoke Detector - Reflector	4090-9101	Surface
[Symbol]	Monitor ZAM	4090-9001	4"sq 2 1/8" deep w/ 2-gang cover by EC
[Symbol]	Supervised IAM	4090-9001	4"sq w/sg & cover by EC
[Symbol]	Flow Switch	By Others	By Others
[Symbol]	Pressure Switch	By Others	By Others
[Symbol]	Low Air Switch	By Others	By Others
[Symbol]	Tamper Switch	By Others	By Others
[Symbol]	Post Indicator Valve	By Others	By Others
[Symbol]	Coil Supervision Module	2081-9046	By Others
[Symbol]	Pre-Action Solenoid	By Others	By Others
[Symbol]	Door Holders	By Others	By Others
[Symbol]	Suppression Mech. Disconnect	2080-9060	Included
[Symbol]	Relay IAM	4090-9002	4"sq 2 1/8" deep w/ 2-gang cover by EC
[Symbol]	Remote Relay	2088-9008	self-contained
[Symbol]	FFJ Jack	2084-9001	sq by EC
[Symbol]	FFJ Cabinet	2084-9026 w/ (10) 2084-9024 handsets	23.5"H x 23.5"W x 4.0"D
[Symbol]	Smoke Control Panel	CEP-L-GR-GP6	41"H x 29"W x 4.75"D
[Symbol]	Suppression Releasing Peripheral	4090-9006	8.125"H x 6.125"W x 4"D Surface Mount
[Symbol]	Printer	4190-9013	Table Top
[Symbol]	LCD Annunciator	4603-9101	6-gang 3.5"deep by EC or RSA-WP-SA
[Symbol]	Terminal Cabinet	SSU00661	13"H x 23.5"W x 5.5"D
[Symbol]	Transponder Panel	4100-9601	56"H x 24"W x 8.375"D 2975-9432
[Symbol]	Fire Alarm Control Panel	4100-9114	56"H x 24"W x 8.375"D 2975-9426
[Symbol]	Network Display Unit	4100-9151	56"H x 24"W x 8.375"D 2975-9426
[Symbol]	4007ES Pre-Action Panel	4007-9101	16.25"H x 13.5"W x 5.75"D

Letter	Qty	Color/Type	Size	Function
A	2	Black/Orange TFN	16	Zone
C	2	Red/Blue THHN	14	Horn/Strobe
D	4	(2) Red/(2) Blue THHN	14	Horn/Strobe Loop
E	2	Brown/Yellow THHN	14	Door Holders
F	2	Orange THHN	14	Fan Shutdown
H	1	WestPenn D975	18	Serial Communication
D	2	Red/Black THHN	14	Serial Communication
J	1	WestPenn 991	16	Speaker
K	2	WestPenn 991	16	Speaker Loop
L	1	WestPenn 5220FZ	16	Local Network Connection**
M	1	WestPenn 5220FZ	16	Multiplex Transponder**
J	1	WestPenn 5220FZ	16	Speaker
N	2	WestPenn 5120JZ	14	Network Connection
P	2	Red/Black THHN	14	24VDC Power
R	2	Blue/White TFN	16	Remote LED w/Test
T	2	Pink TFN	16	Fire Fighter Telephone
V	1	WestPenn 991	16	Fire Fighter Telephone
X	1	WestPenn D975	18	Addressable Data Line

**STROBE AND SPEAKER IDENTIFICATION**



**ADDRESSABLE DETECTOR IDENTIFICATION**



**LEVEL 3 EAST FLOOR DEMO PLAN**  
SCALE 1/8"=1'-0"

**Johnson Controls**  
9520 10th Avenue South, Suite 100  
Seattle, WA 98108  
SALES: 206-291-1400  
SERVICE: 206-291-1411

**PROJECT #**  
60059222  
61031824  
61031824  
60109145  
650376924

**ENGINEER**  
RSC  
JWB  
RSC  
DAP  
RQB

**REVISION DESCRIPTION**  
PATIENT CARE TOWER 7TH & 6TH FLR TI RECORD DRAWINGS  
DAILY PHARMACY  
DAILY PHARMACY RECORD DRAWING#  
GRESS DOORS  
MRI PRE-ACTION PANEL UPGRADE

**NO.**  
46  
47  
48

**DATE**  
8/28/19  
1/23/19  
9/20/19  
9/21/22  
4/12/23

**DRAWINGS REVIEWED BY:**  
Eric Beck, CET  
NET 422884  
Fire Alarm Systems, Level III

**FIRE ALARM SYSTEM**  
LEVEL 3 EAST FLOOR DEMO PLAN  
GOOD SAMARITAN - PATIENT CARE TOWER  
401 15TH AVENUE SE  
PUYALLUP, WA 98371

**APPROVED BY:**  
C. McCAMMON

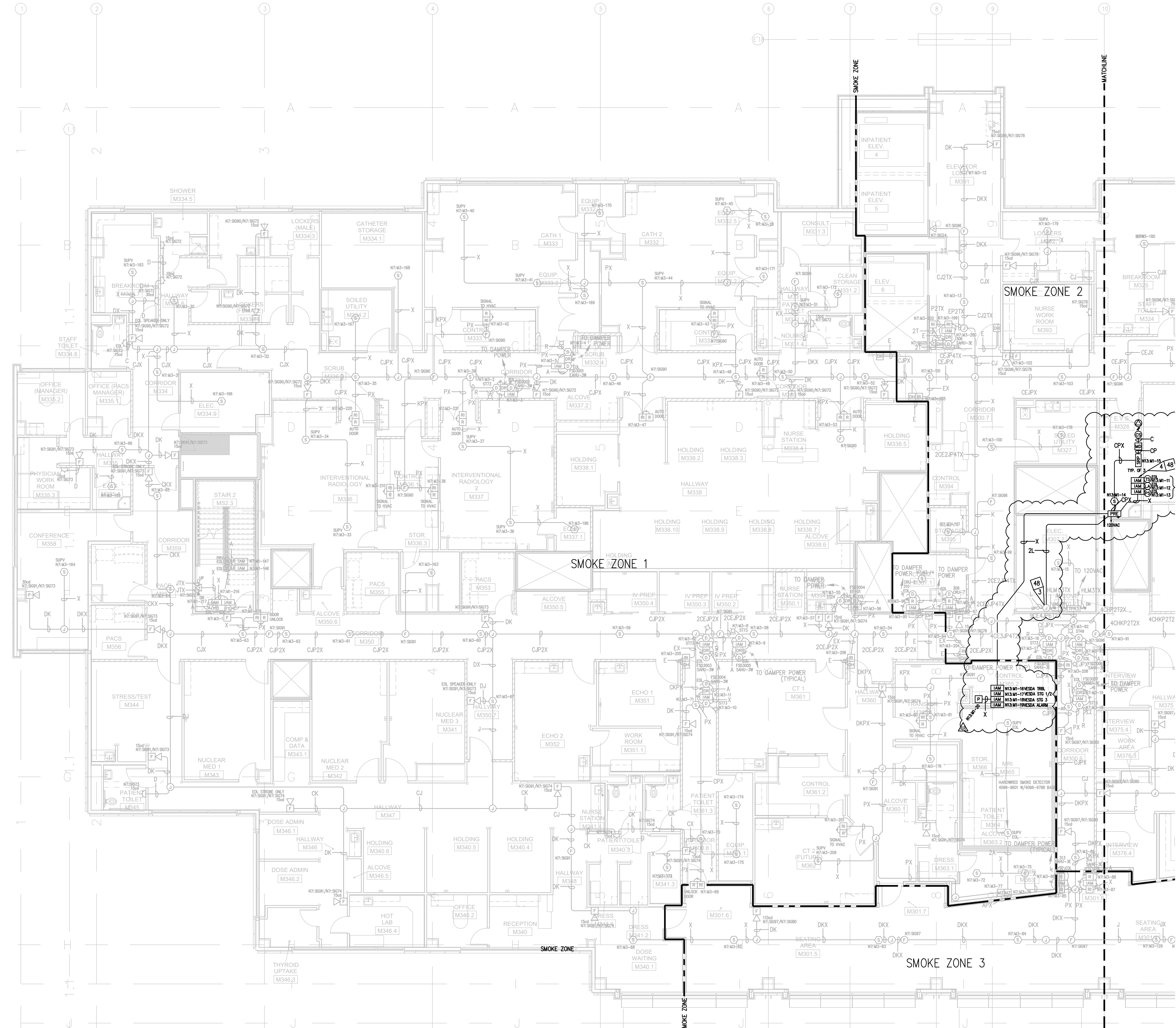
**DRAWN BY:**  
C. McCAMMON

**DATE:**  
8/12/09

**SITE/PROJECT NUMBER:**  
458413141/943123501

**SHEET NUMBER:**  
FA-LEV3-E-D



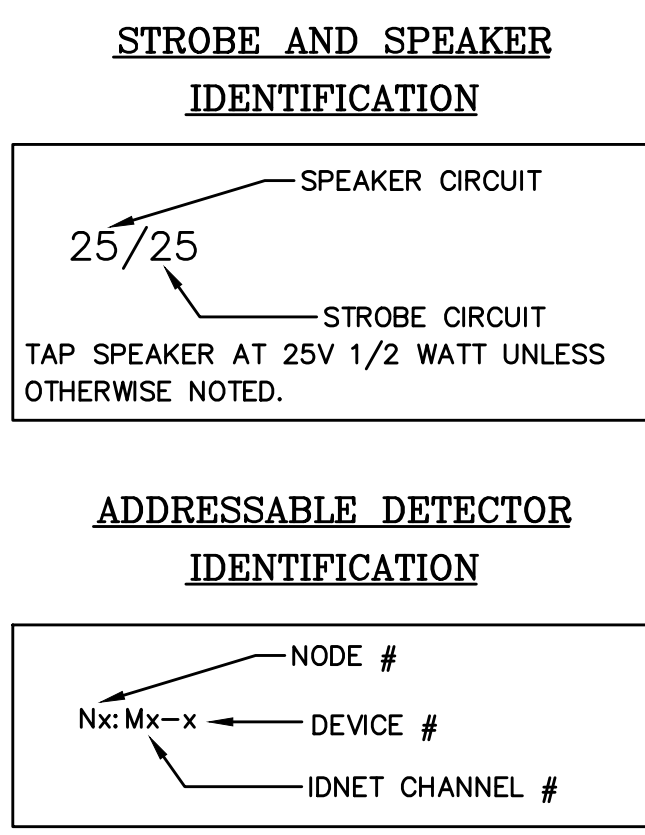


Symbol	Description	Part #	Backbox
[Symbol]	Multicandela Wall Speaker/Strobe - White * subscript indicates circuit # and candela setting	4906-9153	5" sq 2.875" deep w/ ext ring 4" sq adapter by EC
[Symbol]	Multicandela Ceiling Speaker/Strobe - White * subscript indicates circuit # and candela setting	4906-9154	5" sq 2.875" deep w/ ext ring 4" sq adapter by EC
[Symbol]	Multicandela Wall Strobe - White * subscript indicates circuit # and candela setting	4906-9103	4" sq by EC
[Symbol]	Multicandela Ceiling Strobe - White * subscript indicates circuit # and candela setting	4906-9102	4" sq by EC
[Symbol]	Wall Speaker - White * subscript indicates circuit #	4902-9717	5" sq 2.875" deep w/ ext ring 4" sq adapter by EC
[Symbol]	Ceiling Speaker - White * subscript indicates circuit #	4902-9721	5" sq 2.875" deep w/ ext ring 4" sq adapter by EC
[Symbol]	Addressable Manual Station * subscript indicates device address	4099-9003 w/ 5111 100 Cover	4" sq 2 1/8" deep w/ sq ring by EC
[Symbol]	Addressable Manual Station Suppression * subscript indicates device address	4099-9015 w/ 4099-9802 Label Kit	4" sq 2 1/8" deep w/ sq ring by EC
[Symbol]	TrueAlarm Smoke Sensor * subscript indicates device address/ SPUV indicates supervisory device	4098-9714 w/ 4098-9702 Base	4" oct by EC
[Symbol]	TrueAlarm Heat Sensor * subscript indicates device address	4098-9733 w/ 4098-9702 Base	4" oct by EC
[Symbol]	Heat Detector - 135FT	4098-9756	4" oct by EC
[Symbol]	TrueAlarm Duct Sensor * subscript indicates device address and sampling tube size	4098-9756	self-contained
[Symbol]	Remote LED w/Test	2098-9806	sq by EC
[Symbol]	Duct Detector Relay	4098-9843	4" sq w/sg & cover by EC
[Symbol]	Beam Smoke Detector - Transmitter	BEAM1224	Surface Box w/BEAMSK
[Symbol]	Beam Smoke Detector - Reflector	4090-9101	Surface
[Symbol]	Monitor ZAM * subscript indicates device address	4090-9001	4" sq 2 1/8" deep w/ 2-gang cover by EC
[Symbol]	Supervised IAM * subscript indicates device address	By Others	4" sq w/sg & cover by EC
[Symbol]	Flow Switch	By Others	By Others
[Symbol]	Pressure Switch	By Others	By Others
[Symbol]	Low Air Switch	By Others	By Others
[Symbol]	Tamper Switch	By Others	By Others
[Symbol]	Post Indicator Valve	By Others	By Others
[Symbol]	Coil Supervision Module	2081-9046	By Others
[Symbol]	Pre-Action Solenoid	By Others	By Others
[Symbol]	Door Holders	By Others	By Others
[Symbol]	Suppression Mech. Disconnect	2080-9060	Included
[Symbol]	Relay IAM * subscript indicates device address	4090-9002	4" sq 2 1/8" deep w/ 2-gang cover by EC
[Symbol]	Remote Relay	2088-9008	self-contained
[Symbol]	FFT Jack	2084-9001	sg by EC
[Symbol]	FFT Cabinet	2084-9026 w/ (10) 2084-9024 handsets	23.5" H x 23.5" W x 4.0" D
[Symbol]	Smoke Control Panel	CEP-L-GR-GP6	41" H x 29" W x 4.75" D
[Symbol]	Suppression Releasing Peripheral	4090-9006	8.125" H x 6.125" W x 4" D Surface Mount
[Symbol]	Printer	4190-9103	Table Top
[Symbol]	LCI Annunciator	4603-9101	6-gang 3.5" deep by EC or RSA-WP-SA
[Symbol]	Terminal Cabinet	SSU00661	13" H x 23.5" W x 5.5" D
[Symbol]	Transponder Panel	4100-9601	56" H x 24" W x 8.375" D
[Symbol]	Fire Alarm Control Panel	4100-9114	56" H x 24" W x 8.375" D
[Symbol]	Network Display Unit	4100-9115	56" H x 24" W x 8.375" D
[Symbol]	4007ES Pre-Action Panel	4007-9101	16.25" H x 13.5" W x 5.75" D

Wire Code				
Letter	Qty	Color/Type	Size	Function
A	2	Black/Orange THN	16	Zone
C	2	Red/Blue THN	14	Horn/Strobe
D	4	(2) Red/(2) Blue THN	14	Horn/Strobe Loop
E	2	Brown/Yellow THN	14	Door Holders
F	2	Orange THN	14	Fan Shutdown
H	1	WestPenn D975	18	Serial Communication
J	2	Red/Black THN	14	Speaker
K	1	WestPenn 991	16	Speaker Loop
L	1	WestPenn 5220FZ	16	Local Network Connection**
M	1	WestPenn 5220FZ	16	Miniplex Transponder**
N	1	WestPenn 5120UZ	14	Network Connection
P	2	Red/Black THN	14	24VDC Power
R	2	Blue/White THN	16	Remote LED w/Test
T	2	Pink TFN	16	Fire Fighter Telephone
V	1	WestPenn 691	18	Printer
X	1	WestPenn D975	18	Addressable Data Line

\*\* 2-wr cable for survivability

- GENERAL REV 48 NOTES:**
- EXISTING DEVICE LOCATIONS AND WIRING ARE SHOWN LIGHT AND ARE BASED UPON RECORD DRAWING INFORMATION PROVIDED BY OTHERS. FIELD VERIFY ALL LOCATIONS AND CONNECTIONS TO EXISTING EQUIPMENT. CONTRACTOR TO RED LINE AND NOTE ANY AND ALL CHANGES ON THE RECORD DRAWING SET.
- REV 48 FLAG NOTES:**
- EXISTING PRE-ACTION PANEL AND ALL ASSOCIATED WIRING AND DEVICES ARE TO BE REMOVED. 120VAC CIRCUIT TO BE RETAINED FOR CONNECTION TO NEW 4007ES PRE-ACTION PANEL.
  - EXISTING DEVICE TO BE REMOVED AND RETAINED FOR REINSTALLATION AFTER DEMOLITION PHASE. REMOVE UNNECESSARY WIRING AND MAINTAIN CIRCUIT INTEGRITY. RELOCATED END OF LINE RESISTORS AS APPLICABLE.
  - BREAK NETWORK CABLE AT THIS LOCATION AND LOOP TO NEW 4007ES PRE-ACTION RELEASING PANEL. IF THIS IS NOT POSSIBLE AT THIS LOCATION, LOOP NETWORK CABLE TO CLOSEST FACP NODE.
  - REINSTALL EXISTING DEVICE REMOVED DURING DEMOLITION. CONNECT AS SHOWN.



**LEVEL 3 WEST FLOOR PLAN**  
SCALE 1/8"=1'-0"

9520 10th Avenue South, Suite 100  
Seattle, WA 98108  
SALES: 206-291-1400  
SERVICE: 206-291-1411

NO.	DATE	REVISION DESCRIPTION	DRAWN BY	ENGINEER	PROJECT #
46	8/28/19	PATIENT CARE TOWER 7TH & 6TH FLOOR RECORD DRAWINGS	RSC	RSC	600598222
47	9/20/19	DAILY PHARMACY RECORD DRAWINGS	RSC	RSC	610318224
48	9/21/22	DAILY PHARMACY RECORD DRAWINGS	RSC	RSC	610318224
	9/21/22	EXCESS DOORS	DAP	ROB	60009145
	4/12/23	MRI PRE-ACTION PANEL UPGRADE	ABH	ROB	650376924

**DRAWINGS REVIEWED BY:**  
Eric Beck, CET  
NET 422884  
Fire Alarm Systems, Level III

**FIRE ALARM SYSTEM**

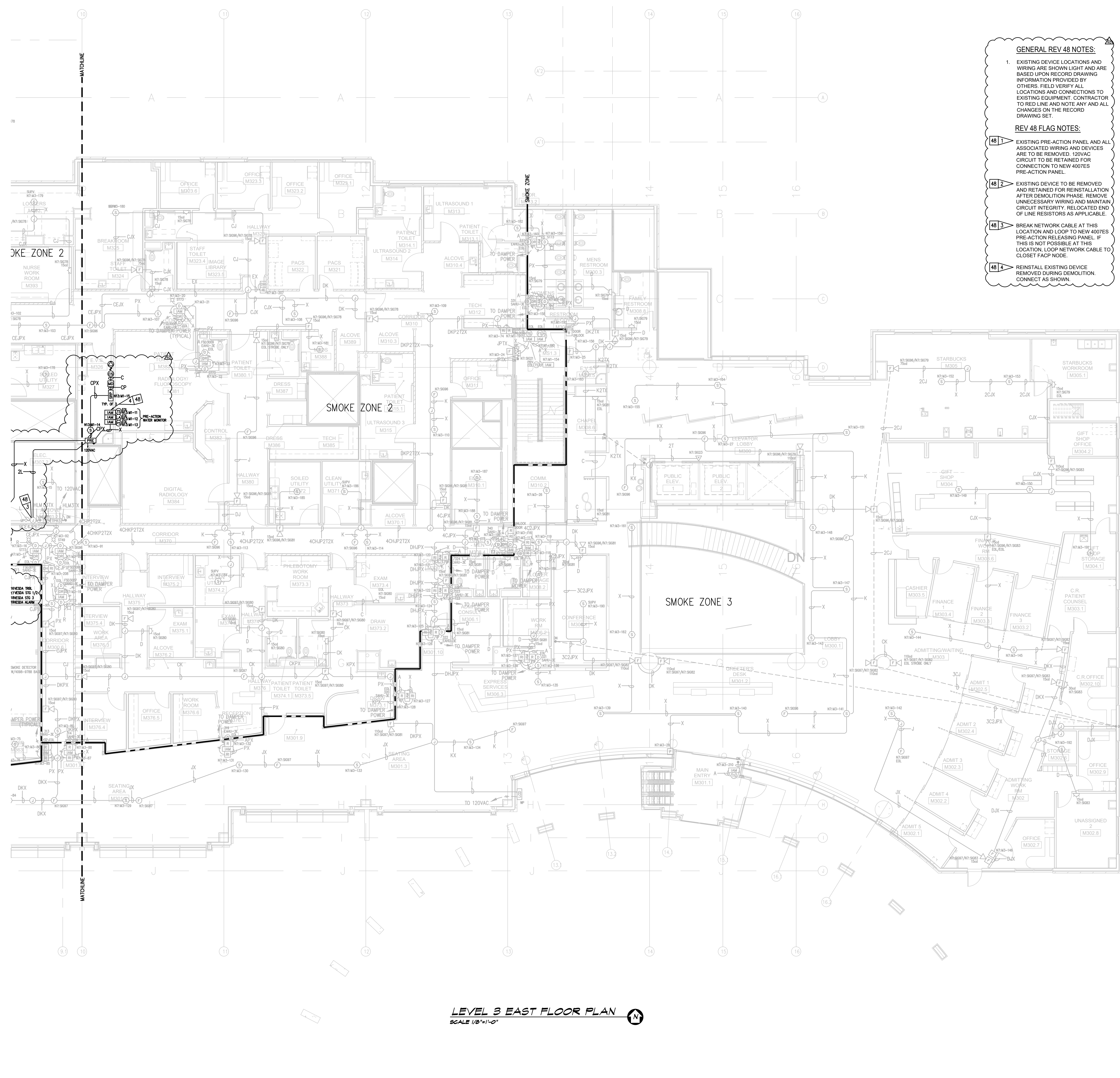
**LEVEL 3 WEST FLOOR PLAN**

**GOOD SAMARITAN - PATIENT CARE TOWER**

401 15TH AVENUE SE  
PUYALLUP, WA 98371

APPROVED BY:	C. McCAMMON
DRAWN BY:	C. McCAMMON
DATE:	8/12/09
SITE/PROJECT NUMBER:	458413141/943123501
SHEET NUMBER:	FA-LEV3-W





**GENERAL REV 48 NOTES:**

1. EXISTING DEVICE LOCATIONS AND WIRING ARE SHOWN LIGHT AND ARE BASED UPON RECORD DRAWING INFORMATION PROVIDED BY OTHERS. FIELD VERIFY ALL LOCATIONS AND CONNECTIONS TO EXISTING EQUIPMENT. CONTRACTOR TO RED LINE AND NOTE ANY AND ALL CHANGES ON THE RECORD DRAWING SET.

**REV 48 FLAG NOTES:**

48 EXISTING PRE-ACTION PANEL AND ALL ASSOCIATED WIRING AND DEVICES ARE TO BE REMOVED. 120VAC CIRCUIT TO BE RETAINED FOR CONNECTION TO NEW 4007ES PRE-ACTION PANEL.

48 EXISTING DEVICE TO BE REMOVED AND RETAINED FOR REINSTALLATION AFTER DEMOLITION PHASE. REMOVE UNNECESSARY WIRING AND MAINTAIN CIRCUIT INTEGRITY. RELOCATED END OF LINE RESISTORS AS APPLICABLE.

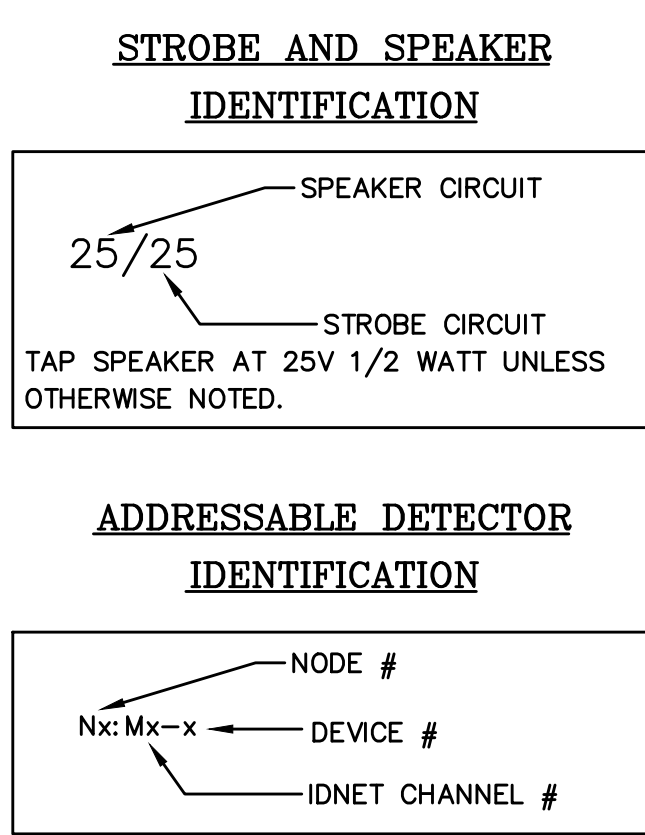
48 BREAK NETWORK CABLE AT THIS LOCATION AND LOOP TO NEW 4007ES PRE-ACTION RELASING PANEL. IF THIS IS NOT POSSIBLE AT THIS LOCATION, LOOP NETWORK CABLE TO CLOSET FACD NODE.

48 REINSTALL EXISTING DEVICE REMOVED DURING DEMOLITION. CONNECT AS SHOWN.

Symbol	Description	Part #	Backbox
[Symbol]	Multicandela Wall Speaker/Strobe - White	4906-9153	5" sq 2.875" deep w/ ext ring 4"sq adapter by EC
[Symbol]	Multicandela Ceiling Speaker/Strobe - White	4906-9154	5" sq 2.875" deep w/ ext ring 4"sq adapter by EC
[Symbol]	Multicandela Wall Strobe - White	4906-9103	4" sq by EC
[Symbol]	Multicandela Ceiling Strobe - White	4906-9102	4" sq by EC
[Symbol]	Wall Speaker - White	4902-9717	5" sq 2.875" deep w/ ext ring 4"sq adapter by EC
[Symbol]	Ceiling Speaker - White	4902-9721	5" sq 2.875" deep w/ ext ring 4"sq adapter by EC
[Symbol]	Addressable Manual Station	4099-9003 w/ 5111100 Cover	4" sq 2 1/8" deep w/ sq ring by EC
[Symbol]	Addressable Manual Station Suppression	4099-9015 w/ 4099-9802 Label Kit	4" sq 2 1/8" deep w/ sq ring by EC
[Symbol]	TrueAlarm Smoke Sensor	4098-9714 w/ 4098-9792 Base	4" oct by EC
[Symbol]	TrueAlarm Heat Sensor	4098-9733 w/ 4098-9792 Base	4" oct by EC
[Symbol]	Heat Detector - 135FT	ED-2838-PL	4" self-contained
[Symbol]	TrueAlarm Duct Sensor	4098-9756	self-contained
[Symbol]	Remote LED w/Test	2098-9806	sq by EC
[Symbol]	Duct Detector Relay	4098-9843	4"sq w/wg & cover by EC
[Symbol]	Beam Smoke Detector - Transmitter	BEAM1224	Surface Box w/BEAMSMK Surface
[Symbol]	Monitor ZAM	4090-9101	4"sq 2 1/8" deep w/ 2-gang cover by EC
[Symbol]	Supervised IAM	4090-9001	4"sq w/wg & cover by EC
[Symbol]	Flow Switch	By Others	By Others
[Symbol]	Pressure Switch	By Others	By Others
[Symbol]	Low Air Switch	By Others	By Others
[Symbol]	Tamper Switch	By Others	By Others
[Symbol]	Post Indicator Valve	By Others	By Others
[Symbol]	Coil Supervision Module	2081-9046	By Others
[Symbol]	Pre-Action Solenoid	By Others	By Others
[Symbol]	Door Holders	By Others	By Others
[Symbol]	Suppression Mech. Disconnect	2080-9060	Included
[Symbol]	Relay IAM	4090-9002	4"sq 2 1/8" deep w/ 2-gang cover by EC
[Symbol]	Remote Relay	2088-9008	self-contained
[Symbol]	FFT Jack	2084-9001	sq by EC
[Symbol]	FFT Cabinet	2084-9026 w/ (10) 2084-9024 handsets	23.5" x 23.5" x 4.0"D
[Symbol]	Smoke Control Panel	CEF-LGR-GP6	41" x 29" x 4.75"D
[Symbol]	Suppression Releasing Peripheral	4090-9006	8.125" x 6.125" x 4.0"D Surface Mount
[Symbol]	Printer	4190-9013	Table Top
[Symbol]	LCD Annunciator	4603-9101	6-gang 3.5" deep by EC or RSA-WP-SA
[Symbol]	Terminal Cabinet	SSU00661	13" x 23.5" x 5.5"D
[Symbol]	Transponder Panel	4100-9601	56" x 24" x 8.375"D
[Symbol]	Fire Alarm Control Panel	4100-9114	2975-9432
[Symbol]	Network Display Unit	4100-9151	56" x 24" x 8.375"D
[Symbol]	4007ES Pre-Action Panel	4007-9101	16.25" x 13.5" x 5.75"D

Wire Code				
Letter	Qty	Color/Type	Size	Function
A	2	Black/Orange TFN	16	Zone
C	2	Red/Blue THHN	14	Horn/Strobe
D	4	(2) Red/(2) Blue THHN	14	Horn/Strobe Loop
E	2	Brown/Yellow THHN	14	Door Holders
F	2	Orange THHN	14	Fan Shutdown
H	1	WestPenn D975	18	Serial Communication
J	1	WestPenn 991	16	Speaker
K	2	WestPenn 991	16	Speaker Loop
L	1	WestPenn 5220FZ	16	Local Network Connection**
M	1	WestPenn 5220FZ	16	Miniplex Transponder**
N	2	WestPenn 5120UZ	14	Network Connection
P	2	Red/Black THHN	14	24VDC Power
R	2	Blue/White TFN	16	Remote LED w/Test
T	1	WestPenn 991	16	Fire Fighter Telephone
V	1	WestPenn D977	18	Printer
X	1	WestPenn D975	18	Addressable Data Line

\*\* 24-cbr cable for survivability



**LEVEL 3 EAST FLOOR PLAN**  
SCALE 1/8"=1'-0"

**FA-LEVEL 3**

**ELECTRONIC DRAWING NAME**

**FIRE ALARM SYSTEM**

**LEVEL 3 EAST FLOOR PLAN**

**GOOD SAMARITAN - PATIENT CARE TOWER**

401 15TH AVENUE SE  
PUYALLUP, WA 98971

**APPROVED BY:**  
C. McCAMMON

**DRAWN BY:**  
C. McCAMMON

**DATE:**  
8/12/09

**SITE/PROJECT NUMBER:**  
458413141/943123501

**SHEET NUMBER:**  
FA-LEV3-E

PROJECT #	ENGINEER	REVISION DESCRIPTION	DATE	NO.
600506222	RSC	PATIENT CARE TOWER 7TH & 6TH FLR TI RECORD DRAWINGS	8/28/19	46
610318224	RSC	DAILY PHARMACY	1/23/19	47
610318224	RSC	DAILY PHARMACY RECORD DRAWINGS	9/20/19	48
60109145	DAP	EXRESS DOORS	9/21/22	49
650376924	RQB	MRI PRE-ACTION PANEL UPGRADE	4/12/23	50

**DRAWINGS REVIEWED BY:**  
Eric Beck, CET  
NICK Z28584  
Fire Alarm Systems, Level III

**Legend**

**Johnson Controls**  
9520 10th Avenue South, Suite 100  
Seattle, WA 98108  
SALES: 206-291-1400  
SERVICE: 206-291-1411

**© 2017 JOHNSON CONTROLS**