

DRAWN BY:	MYM
REVIEWED BY:	MPM
DATE:	3/21/2023
SCALE:	AS NOTED
AHJ:	CITY OF PUYALLUP

REVISIONS:		
REV#	DATE	DESCRIPTION

HYDRAULIC DESIGN INFO

THIS SYSTEM IS HYDRAULICALLY DESIGNED	THIS SYSTEM IS NOT HYDRAULICALLY DESIGNED
- FLOW TEST -	
STATIC:	-
RESIDUAL:	-
GPM FLOWING:	-
DATE & TIME:	-

SPRINKLER LEGEND										
SYM	MFR	VIKING	SIN	RESP	TYPE	K-FACTOR	TEMP	FINISH	ESC	QTY
●			VK9021	QR	SSP	5.6	155	7/2"	CH	94

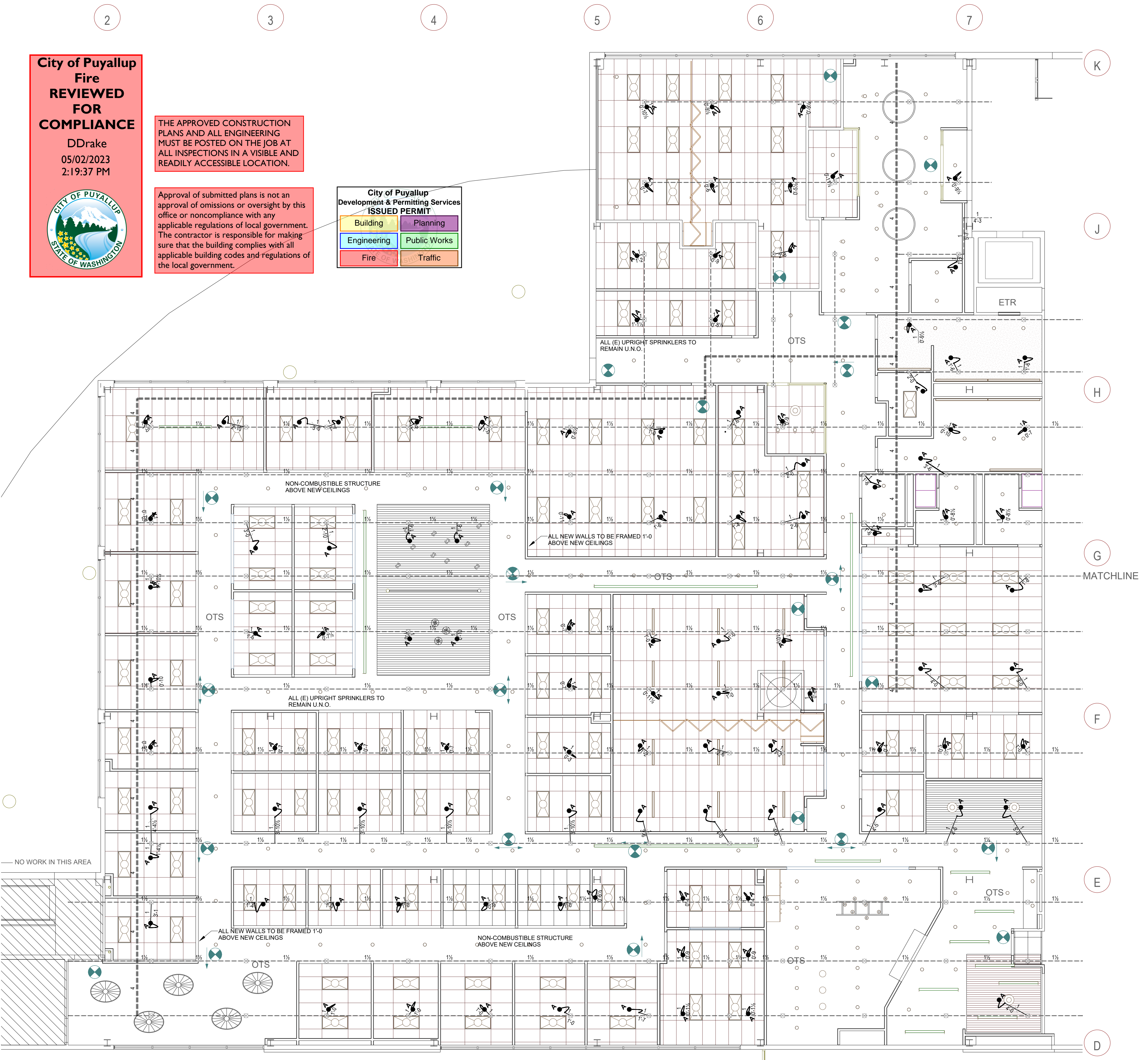
City of Puyallup Fire REVIEWED FOR COMPLIANCE
 DDrake
 05/02/2023
 2:19:37 PM

THE APPROVED CONSTRUCTION PLANS AND ALL ENGINEERING MUST BE POSTED ON THE JOB AT ALL INSPECTIONS IN A VISIBLE AND READILY ACCESSIBLE LOCATION.

Approval of submitted plans is not an approval of omissions or oversight by this office or noncompliance with any applicable regulations of local government. The contractor is responsible for making sure that the building complies with all applicable building codes and regulations of the local government.

City of Puyallup Development & Permitting Services ISSUED PERMIT

Building	Planning
Engineering	Public Works
Fire	Traffic

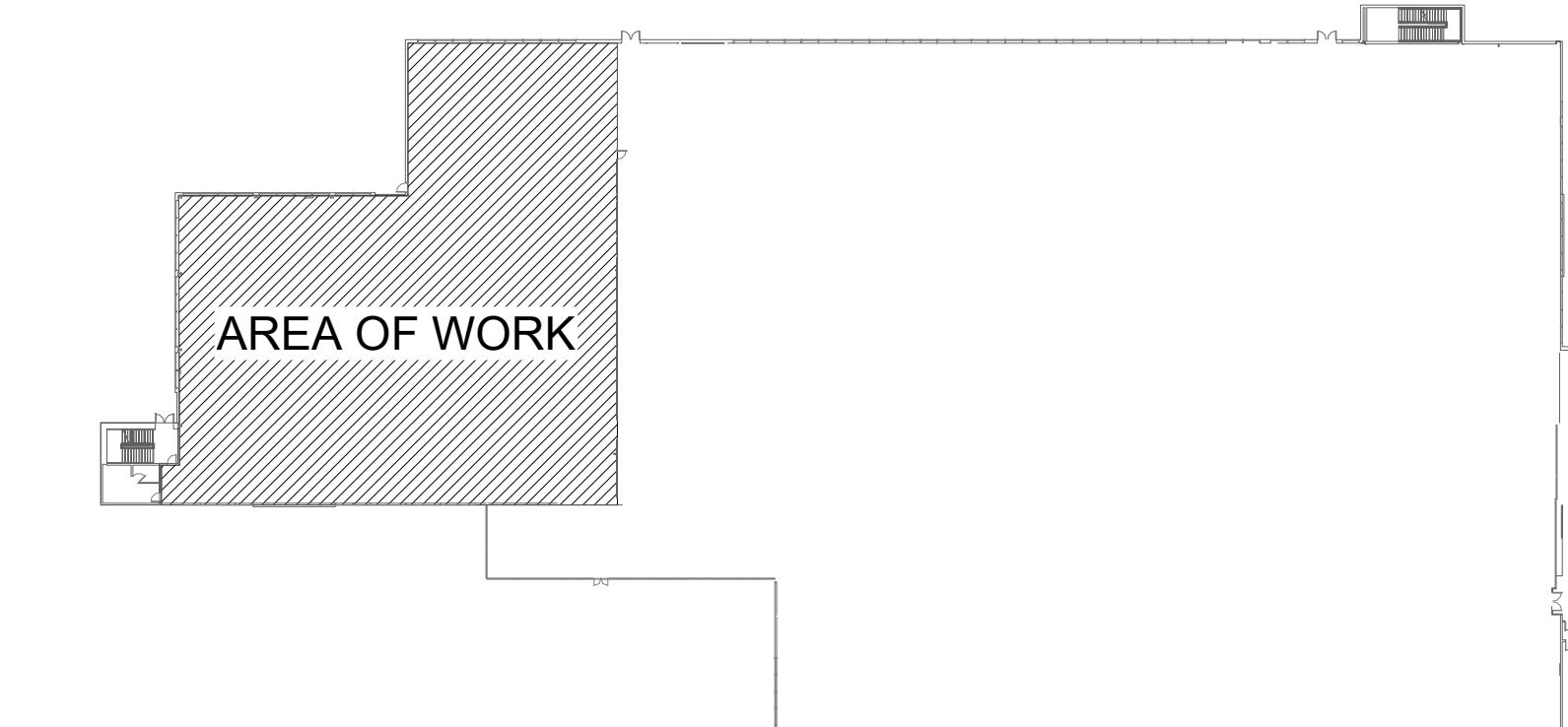
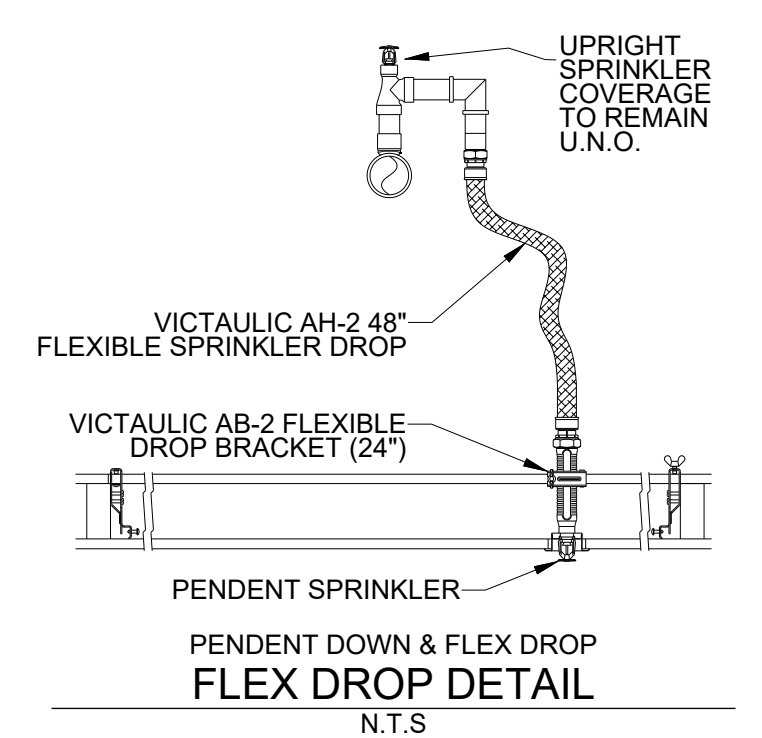
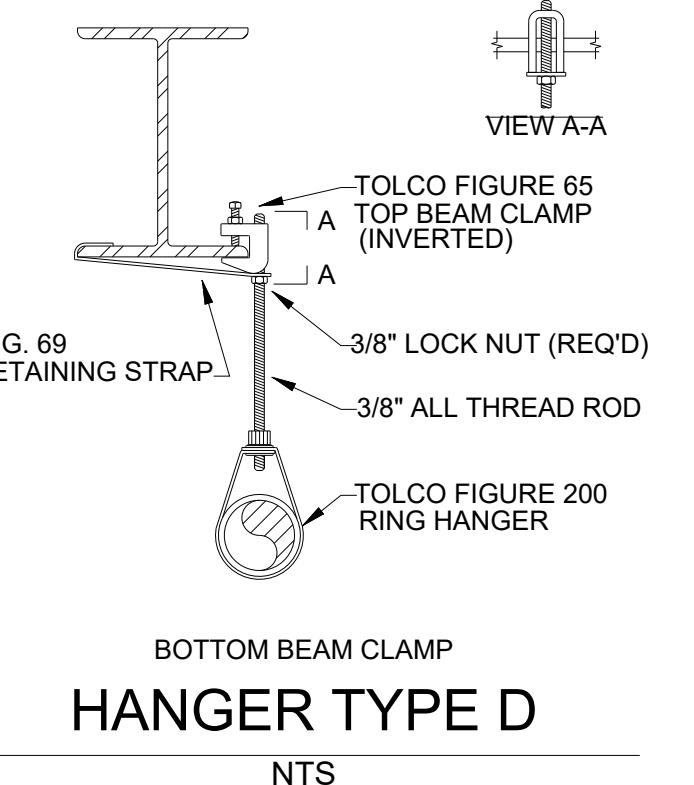
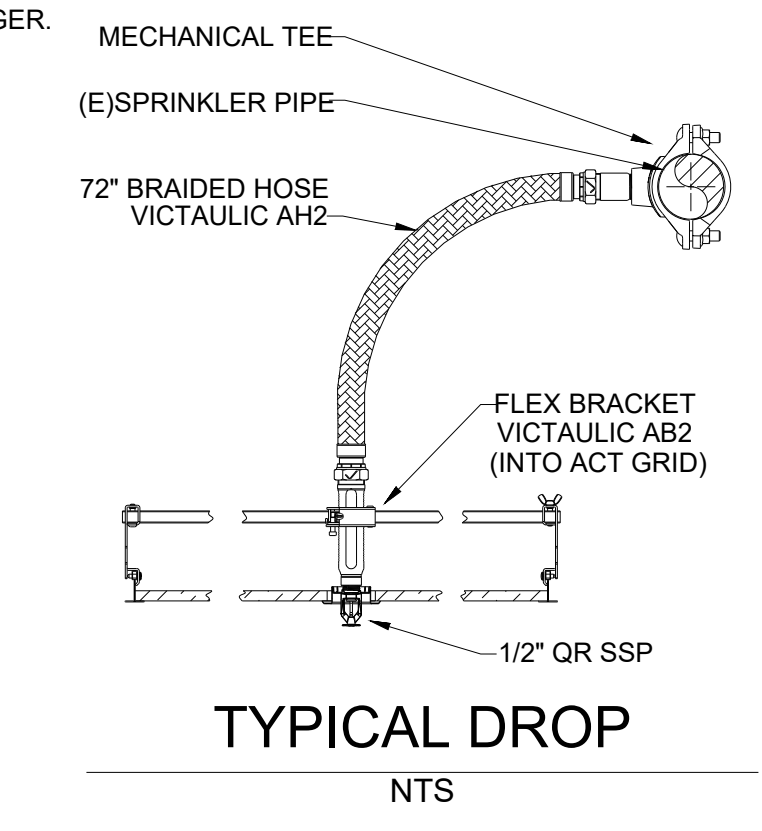
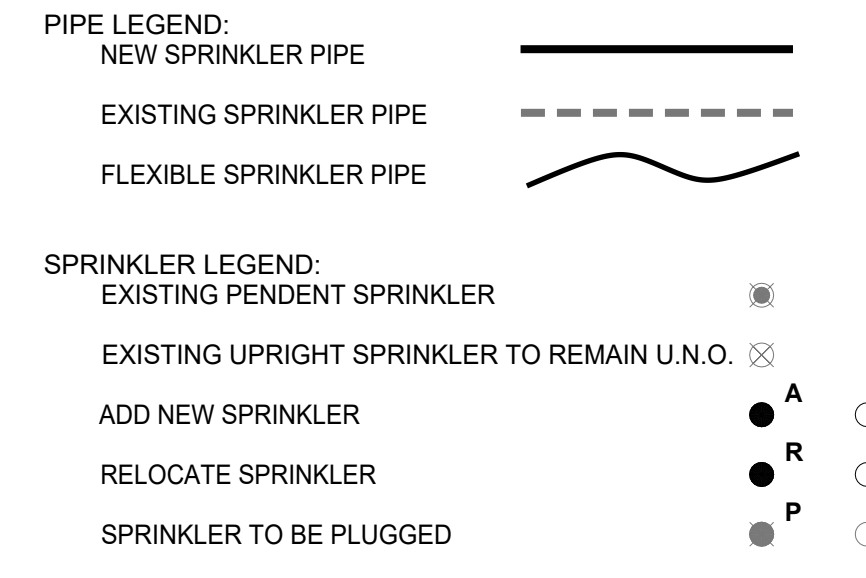


SCOPE OF WORK:
 ADD AND RELOCATE SPRINKLERS AS REQUIRED FOR NEW WALLS AND CEILINGS.

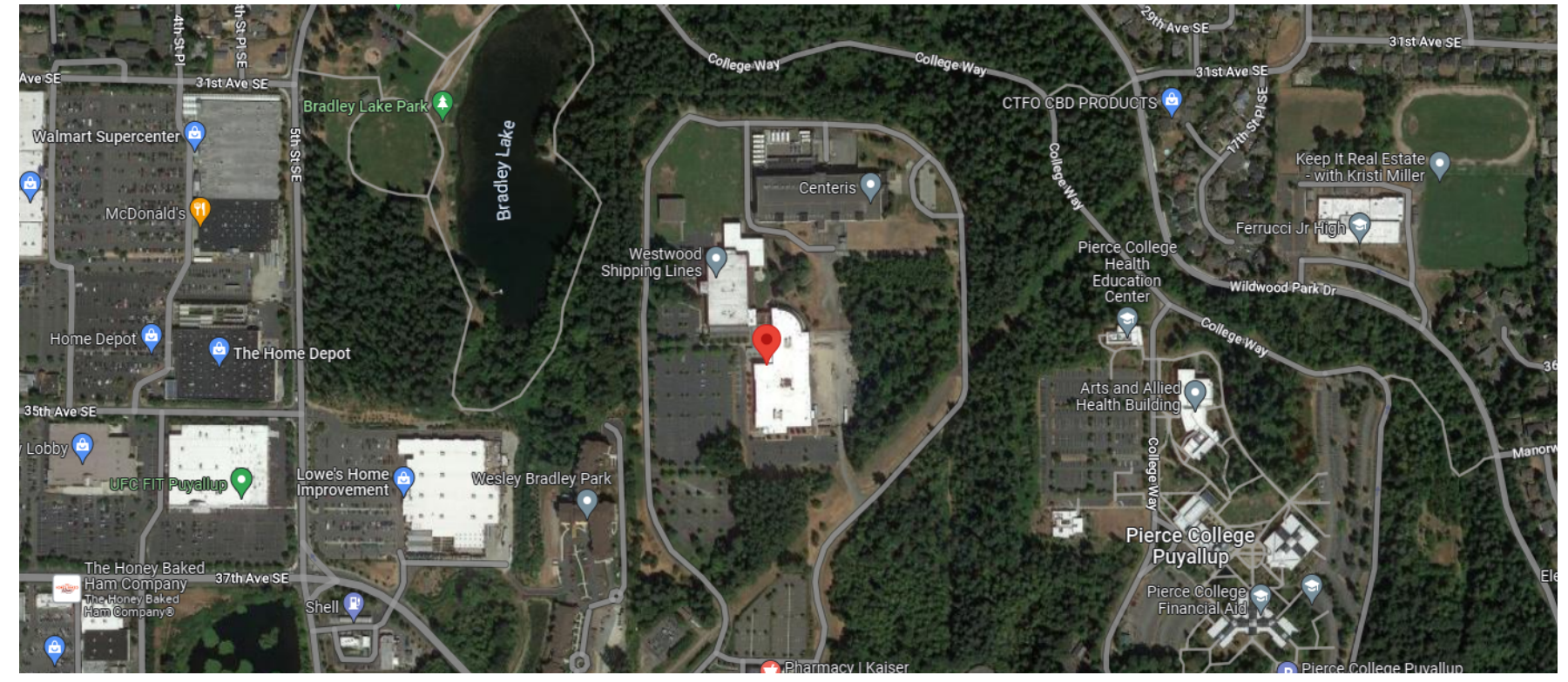
GENERAL NOTES:
 1. ALL MATERIAL AND EQUIPMENT TO BE NEW AND UL AND/OR FM APPROVED.
 2. PIPING DIMENSIONS ARE CUT LENGTH.
 3. PIPE HANGERS AND METHOD OF HANGING TO BE IN ACCORDANCE WITH NFPA #13 (2019).
 4. PIPING SHALL BE IN ACCORDANCE WITH NFPA #13 (2019).
 5. JOINING OF PIPE AND FITTINGS, THREADED AND WELDED, SHALL BE IN ACCORDANCE WITH NFPA #13 (2019).
 6. OWNER TO PROVIDE ADEQUATE HEAT TO PREVENT WATER IN PIPES FROM FREEZING IN AREAS PROTECTED BY A WET PIPE SPRINKLER SYSTEM.
 7. STRUCTURAL ADEQUACY OF THE BUILDING TO SUPPORT THE SPRINKLER PIPING IS THE RESPONSIBILITY OF THE OWNER AND/OR HIS STRUCTURAL REPRESENTATIVE.
 8. ALL FIRE ALARMS, WIRING AND MONITORING ARE TO BE INSTALLED BY OTHERS.

DESIGN NOTES:
 1. DESIGN AND SPRINKLER SPACING PER NFPA #13 (LIGHT HAZARD).
 2. PLAN SUBMITTAL TO AND APPROVAL BY .
 3. MATERIALS PER NFPA #13 STANDARDS AS SELECTED BY FSI.
 4. TESTING PER NFPA #13 AND .

FIELD NOTES:
 1. ALL NEW PIPING TO BE BLACK, SCHEDULE 40 WITH BLACK, DUCTILE IRON THREADED FITTINGS, OR BLACK, DYNA FLOW, WITH ARGO GROOVED FITTINGS.
 2. SPRINKLERS IN ACT TYPE CEILINGS TO BE INSTALLED ON 1" X 1/2" FLEXIBLE HOSE CONNECTIONS.
 3. ARMOVERS SUPPLYING UPRIGHTS LONGER THAN 2'-0" SHALL HAVE A HANGER.
 4. ARMOVERS SUPPLYING PENDANTS LONGER THAN 1'-0" SHALL HAVE A HANGER.
 5. TYPICAL HANGER TO BE SAMMY GST-20 (UNLESS NOTED OTHERWISE).
 6. MAX SQ FT PER SPRINKLER = 225 SQ FT.



KEY PLAN
 SCALE: NTS



VICINITY MAP
 SCALE: NTS

CERTIFICATE OF COMPETENCY
 FIRE PROTECTION SPRINKLER SYSTEMS
 Michael Paul Moffett
 4513-0612-C Level 3
 Fire Sprinklers Incorporated
 FIRESI-988RJ
 Expires 4-4-23
 2/21/23

FIRST FLOOR - PIPING PLAN
 SCALE: 1/8" = 1'-0"

CENTRAL PIERCE FIRE & RESCUE T
 1015 39TH AVE SE SUITE 120
 PUYALLUP, WA 98374

CONTRACT WITH:
JTM CONSTRUCTION
 5900 AIRPORT WAY S SUITE 110
 SEATTLE, WA 98108

HANGER LEGEND:

CPVC HANGER	
TOP BEAM CLAMP W/ STRAP	
HILTI HWK HUS-E2	
SAMMY SUPER SCREW (SS2030)	
SAMMY SIDEWINDER (SWDR 516)	
TRAPEZE	

DRAWING SYMBOLS:

FLEXIBLE GROOVED COUPLING	WELDED PIPE TAG
RIGID GROOVED COUPLING	BRANCHLINE NUMBER
PIPE HANGER (SEE CHART)	PIPE SIZE & LENGTH CUT
END OF LINE RESTRAINT	HYDRAULIC NODE TAG
SEISMIC BRACE	10'-10" FF & ELEVATION DATUM

JOB NUMBER: 4793
 SHEET NUMBER: FP1