

SITE PLAN: P01-P03  
SCALE: 1:100

POWER GENERAL NOTES

- All materials to be installed in accordance with Puget Sound Energy's (PSE) standards. Any deviation from this work sketch must be AUTHORIZED by Poteico's Project Manager and NOTED on the Foremans' Copy.
- All switching arrangements and/or outage arrangements are to be made with the Project Manager at least three (3) working days in advance.
- Contact the Utilities Underground Location Center (1-800-424-5555) at least 48 hours prior to commencing work to get the underground facilities located.
- All work is to be done in accordance with local municipal and county permit requirements as applicable.
- Inclement weather conditions may cause delays in construction times and dates.

**EROSION & SEDIMENT CONTROL REQUIREMENTS**  
 EROSION & SEDIMENT CONTROL SHALL BE PER PSE STANDARD PRACTICE 0150.3200 TECHNIQUES FOR TEMPORARY EROSION & SEDIMENT CONTROL & ANY ADDITIONAL LOCAL JURISDICTION REQUIREMENTS. (LOCAL JURISDICTIONS MAY HAVE ADDITIONAL REQUIREMENTS INCLUDING NOTES DETAILING WHERE EROSION OR SEDIMENT CONTROL STRUCTURES ARE TO BE INSTALLED, CROSS SECTION DETAILS OF THE TYPICAL EROSION STRUCTURES, & SPECIAL REQUIREMENTS FOR WORK IN SENSITIVE AREAS.)

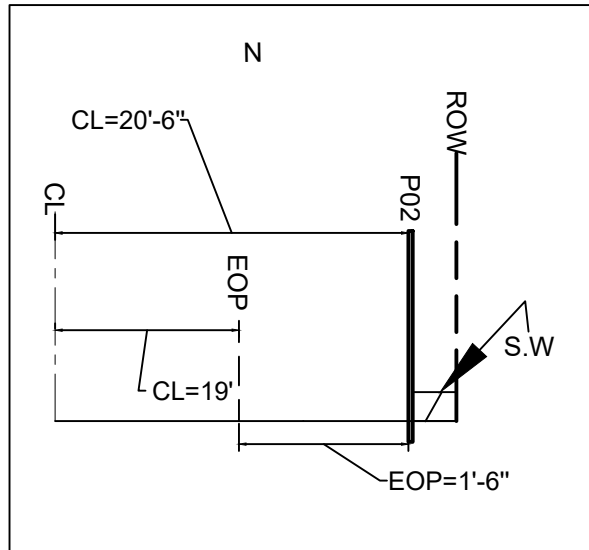
SITE SPECIFIC NOTES

- P01 (568241-155305)**  
 - TOP EXIST POLE 0'-75" ABOVE THE DISTRIBUTION CONDUCTORS
- P02 (568254-155305)**  
 - INST NEW 90' CLH3 POLE AT 53' NORTH OF P01 PER TRANSMISSION WO# 111027668  
 - INST 3Ø PRI NEUT SGL ARM (6033.3012 TAP313)  
 - ATTACH EXIST OH SEC
- P03 (568255-155305)**  
 - RAISE EXIST S/L 12' ABOVE TOP COMM  
 - ANGLE S/L 45° SW  
 - CREW TO MAINTAIN SAFETY SPACE CLEARANCES

All proposed franchise utilities shall be located within a recorded utility easement or in the public right-of-way as determined by the City of Puyallup. The City of Puyallup does not authorize or permit utility work on private property.

Where a curb exists, the lateral offset of all vertical obstructions shall be a minimum of 1.5' from the face of the curb to the face of the vertical obstruction and a minimum of 3' at intersections. Where no curb exists, the lateral offset of all vertical obstructions shall be a minimum of 4' measured from the edge of pavement to the face of the obstruction.

Anchored guy wire shall be installed or retrofit with a minimum 7-foot of overhead sidewalk clearance. The guy-wire shall not obstruct access to any property or to a public or private utility facility. The guy wire shall be anchored in the public right-of-way or within a private utility easement.

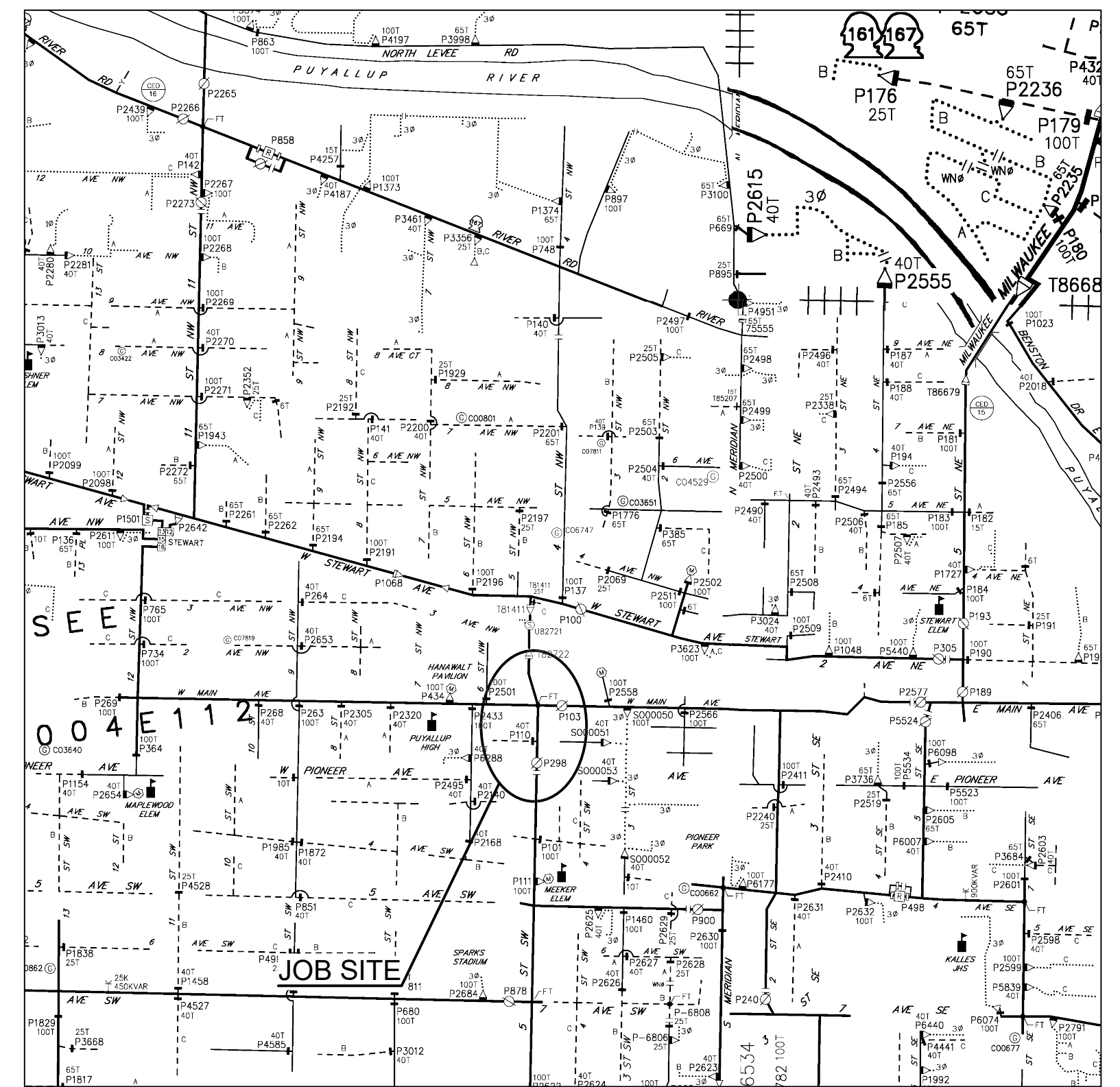


ROW PROFILE: P02  
NOT TO SCALE

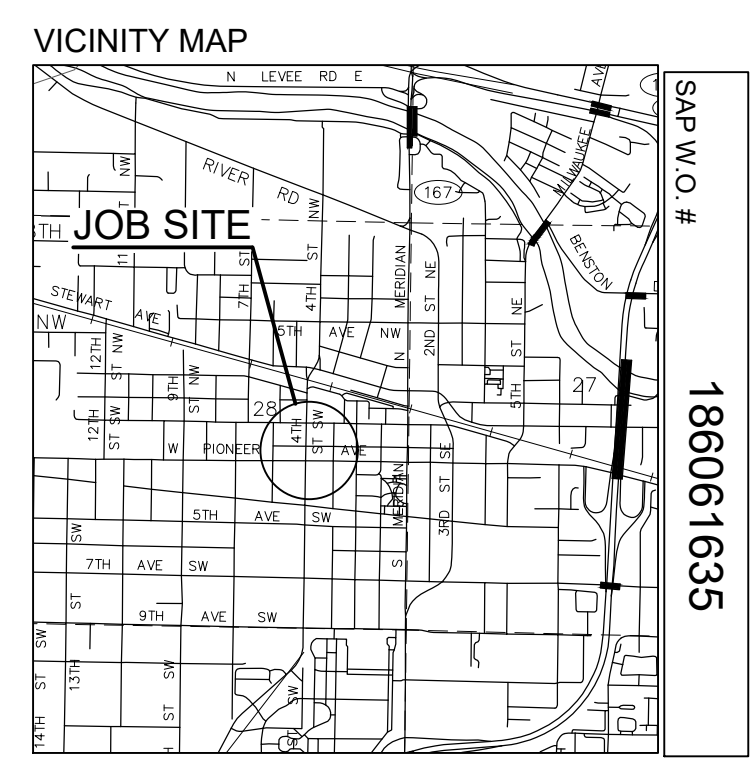
**City of Puyallup  
Development & Permitting Services  
ISSUED PERMIT**

Building	Planning
Engineering	Public Works
Fire	Traffic

THIS PAGE PERTAINS TO DISTRIBUTION UNDERBUILD  
SEE ADDITIONAL PRINT FOR TRANSMISSION NOTES



OH CIRCUIT MAP: D2004E112,104  
SCALE 6" = 1 MILE



**FOREMAN (CHECK BOX WHEN COMPLETED)**

PSE Equipment LOCKED/SECURED & Work Area left in CLEAN/SAFE Condition.

Grid, Cable, and Switch numbers INSTALLED & VERIFIED.

Field Changes REDLINED on As-built.

Material VERIFIED and CHANGES noted on Paperwork.

Total PRIMARY Cable noted on As-built.

Company ID's RECORDED in correct location on As-built.

Indicate correct FUSE SIZE on As-built & VERIFY proper PHASE.

Deviations noted on the As-built and their reason.

I certify that the work performed meets PSE's standards and procedures and that all quality requirements are met.

Foreman's Signature \_\_\_\_\_ Date \_\_\_\_\_  
 Print Name \_\_\_\_\_

PROJECT PHASE	NOTIF#	ORDER#
PWR Superior	512583816	186061635
Sub Order		111027668/108136857
		N/A
		N/A

Developer: Yes  PSE No

"Locates Required" No  No

"Outages Required" No  No

"Flagging Required" Yes  No

CALL (800) 424-5555  
 2 BUSINESS DAYS BEFORE YOU DIG  
 THIS SKETCH NOT TO BE RELIED UPON FOR EXACT LOCATION OF EXISTING FACILITIES

REAL ESTATE/EASEMENT	PERMIT		
N/A	PUYALLUP		
FUNCTION	CONTACT	PHONE NO	DATE
PROJECT MGR	V. PLUVIOSE	253-553-6176	4/6/2022
ENGR - POWER	V. PLUVIOSE	253-553-6176	4/6/2022
ENGR - GAS	N/A	N/A	N/A
COUNTY	Emer Sect	Gas Wk Ctr	POWER WK CTR
PIERCE	N/A	N/A	OSWPRE
1/4 SEC	OP MAP	N/A	PLAT MAP
T20-R04E-S28	N/A	N/A	N/A
U-MAP NO (POWER)	OH CKT MAP	UG CKT MAP	CIRCUIT NO
A2004E112	D2004E112,104	R2004E112	STW-16

**JOINT FACILITIES ARRANGEMENTS**

UTILITIES	N/A	N/A	N/A	N/A
CONTACT	N/A	N/A	N/A	N/A
PHONE#	N/A	N/A	N/A	N/A

**PSE PUGET SOUND ENERGY**  
 DESIGNED BY POTEICO

ENGR1 MCI TK#5001551  
 TOP CUT TRANS. POLE, INSTALL NEW TRANS. POLE, RAISE S/L  
 422 W MEEKER AVE PUYALLUP, WA 98371

INCIDENT	MAOP
N/A	N/A
Gas Order	Elect Order
N/A	186061635
SCALE	PAGE
AS NOTED	1/1