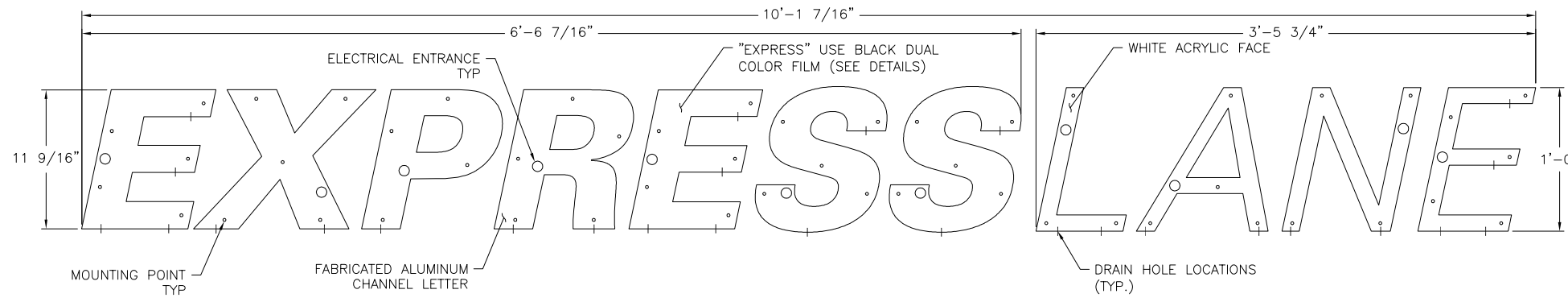


INSTALLATION DETAILS

NOTE:
DIMENSIONS SHOWN ARE FOR BACKS ONLY.
FINAL DIMENSIONS WILL VARY BASED ON JEWELITE

See Plans "Sign Designs" for stamps notes and review.



FACE OUTLINE / OUTSIDE OF LETTER CAN SHOWN (W/O TRIMCAP FOR CLARITY)

LOCATIONS FOR ELECTRICAL AND MOUNTING HOLES TO BE PROVIDED BY PRINCIPLE IN ELECTRONIC FORMAT AND MUST BE FOLLOWED EXACTLY.

INSTALLATION INSTRUCTIONS:

1. INSTALLER IS TO MAKE SURE ACM PANEL IS SECURELY ATTACHED TO WALL BEFORE CHANNEL LETTER INSTALLATION.
2. SECURE POUNCE PATTERN TO ACM WALL.
3. DRILL ELECTRICAL HOLES INTO WALL.
4. DRILL MOUNTING HOLES INTO ACM PANEL ONLY.
5. INSTALL 1/4-20 BB SNAPTOGGLE ANCHOR BY HOLD ENDS STRAPS AND PULL TOWARDS YOU UNTIL CHANNEL RESTS FLUSH BEHIND ACM PANEL. SLIDE PLASTIC CAP ALONG STRAPS WITH OTHER HAND UNTIL FLANGE OF CAP IS FLUSH WITH WALL. SNAP OFF STRAPS WHEN IT IS FIRMLY SECURITY TO ACM PANEL.
6. INSTALL LED CABLE PROTECTION TUBES (18"/457mm LONG) INTO THE REAR OF SIGN. PUSH THE BEVELED END OF EACH PROTECTION TUBE INTO REAR OF EACH LOCKING BUSHING UNTIL YOU HEAR AND FEEL THE TWO LOCK TOGETHER.
7. ADD A BEAD OF NON-HARDENING CAULK AROUND EACH HOLE WHERE MOUNTING HARDWARE PENETRATES THE WALL TO INSURE WATER TIGHTNESS.
8. MOUNT LETTERS TO WALL AS SHOWN.
9. BEHIND THE WALL, TRIM THE PROTECTION TUBES TO FIT WALL THICKNESS. BE CAREFUL NOT TO DAMAGE LED CABLE.
10. MOUNT POWER SUPPLY HOUSING INSIDE BUILDING OPPOSITE SIGN SECTIONS.
11. MAKE ALL SECONDARY AND PRIMARY ELECTRICAL CONNECTIONS.
12. TEST LIGHT SIGN.
13. ATTACH WIRE AND POWER SUPPLY COVERS.
14. CLEAN SITE OF ALL INSTALLATION DEBRIS.
15. INSTALLATION TO MEET ALL CODE REQUIREMENTS.

CONSTRUCTION & INSTALLATION OF CHANNEL LETTERS SHALL CONFORM TO ALL UL, NEC, CSA AND LOCAL CODES

POUNCE PATTERN SHALL BE SUPPLIED BY LETTERSET MANUFACTURER.

Building Review Comment:
See other plan for plywood backing requirements (typical).

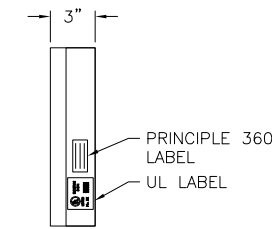
CRATES AND WEIGHTS

AREA: 9.8 SQ FT (0.9 SQ METERS)
ESTIMATED CRATED VOLUME: 11 CUBIC FT (0.3 CUBIC M)
ESTIMATED CRATED WEIGHT: 49 LBS (22 kg)
ESTIMATED UNCRATED WEIGHT: 29 LBS (13 kg)

SIGN ELECTRICAL INFORMATION

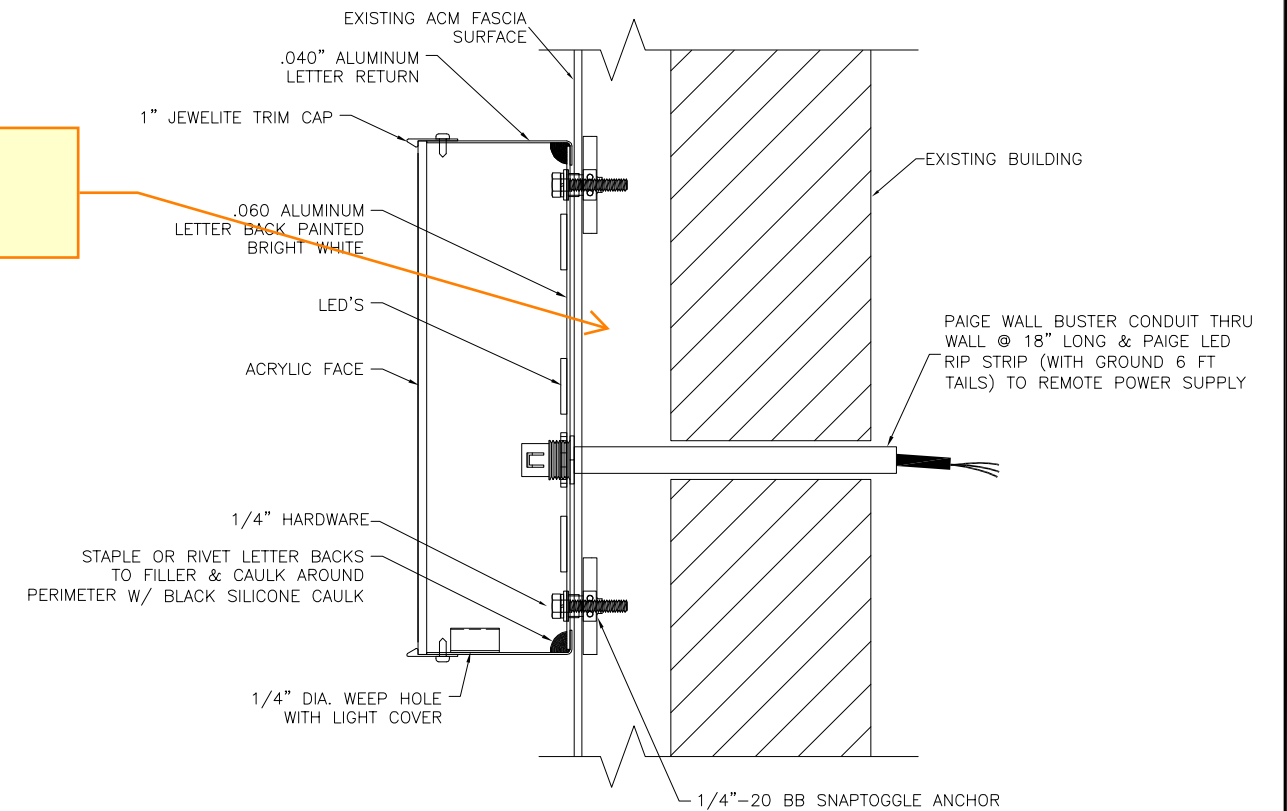
LEDS: EXPRESS (QTY-36) SLOAN PRISM
701269-6WSJ1-MB MODULE - WHITE, 6,500 KELVINS, 1.12 WATTS
LANE (QTY-20) SLOAN PRISM
701269-6WSJ1-MB MODULE - WHITE, 6,500 KELVINS, 1.12 WATTS
LED POWER SUPPLY: (2) SLOAN 60C1 12V DC
TOTAL CONNECTION LOAD: 1.4 AMPS @ 120V
CIRCUITS REQUIRED: (1) 20 AMP
ALL ELECTRICAL COMPONENTS TO BE UL LISTED
GROUNDING PER UL AND NEC SPECIFICATIONS

FN	SHIPPING LIST	QTY
1	EXPRESS LANE LETTERSET	1
2	Ø1/4-20" X 1-1/4" S.S. BOLTS W/ HARDWARE	50
3	1/4" BB SNAPTOGGLE HEAVY-DUTY ANCHORS	50
4	POWER SUPPLIES (AS REQUIRED PER LED LAYOUT)	A/R
5	WEATHERPROOF POWER SUPPLY ENCLOSURE	1
6	PAIGE 18" WALL FEED THROUGH PROTECTION TUBE (W/ LED RIP STRIP & GROUND)	11
7	TOUCH-UP PAINT	A/R
8	POUNCE PATTERN (SEND FULL-SIZE PAPER COPY OF MOUNTING PATTERN)	1
9	CARDBOARD BOXES (PACKAGE INSTALL KIT, EXCEPT POUNCE PATTERN)	A/R
10	CARDBOARD TUBE (PACKAGE POUNCE PATTERN)	1
11	INSTALL DRAWING PRINTED ON 11 X 17 PAPER	1



SIDE

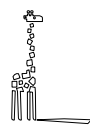
PRSG20221792



TYPICAL MOUNTING DETAIL

DO NOT WIRE LEDs DIRECTLY TO 120V
LEDs MUST BE WIRED THRU MAIN POWER SUPPLY

principle



Principle Group
2035 Lakeside Centre Way
Suite 250
Knoxville, TN 37922
Main: 865.692.4058
Toll-free: 877.692.4058
www.principleglobal.com

The following document is for design intent purposes only and is the intellectual property of Principle Group. It shall not be reproduced and/or distributed for any purpose without prior written approval. The manufacturer shall be responsible for all structural, electrical, mechanical, and foundation engineering. These documents were not produced under an engineering services agreement.

Rev	Date	Initials	Description of change
-	----	---	-
-	----	---	-
-	----	---	-
-	----	---	-
C	1/23/19	AAA	REMOVED RIVERNUT PLUSNUTS AND 3/8" HARDWARE, UPDATED INSTALLATION NOTES, UPDATED SHIPPING LIST
B	9-15-17	EZA	REMOVED NUTSERTS FROM LETTER BACK, UPDATED SHIPPING LIST
A	7-16-17	EZA	UPDATED ELECTRICAL SPECS
RTP	2-17-16	JHP	DRAWING CHECKED AND REVIEWED

principle	Latest Revision: C
Drawing by: EZA	Date: 2/16/16
Description: ILLUMINATED "EXPRESSLANE" CHANNEL LETTERS - INSTALL	
Customer: JEEP	
Sht 1 of 1	Drawing: C095210

INSTALLATION INSTRUCTIONS:

1. INSTALLER IS TO MAKE SURE ACM PANEL IS SECURELY ATTACHED TO WALL BEFORE CHANNEL LETTER INSTALLATION.
2. SECURE POUNCE PATTERN TO ACM WALL.
3. DRILL ELECTRICAL HOLES INTO WALL.
4. DRILL MOUNTING HOLES INTO ACM PANEL ONLY.
5. INSTALL 3/8-16 BB SNAPTOGGLE ANCHOR BY HOLD ENDS STRAPS AND PULL TOWARDS YOU UNTIL CHANNEL RESTS FLUSH BEHIND ACM PANEL. SLIDE PLASTIC CAP ALONG STRAPS WITH OTHER HAND UNTIL FLANGE OF CAP IS FLUSH WITH WALL. SNAP OFF STRAPS WHEN IT IS FIRMLY SECURITY TO ACM PANEL.
6. INSTALL LED CABLE PROTECTION TUBES (18"/457mm LONG) INTO THE REAR OF SIGN. PUSH THE BEVELED END OF EACH PROTECTION TUBE INTO REAR OF EACH LOCKING BUSHING UNTIL YOU HEAR AND FEEL THE TWO LOCK TOGETHER.
7. ADD A BEAD OF NON-HARDENING CAULK AROUND EACH HOLE WHERE MOUNTING HARDWARE PENETRATES THE WALL TO INSURE WATER TIGHTNESS.
8. MOUNT LETTERS TO WALL AS SHOWN.
9. BEHIND THE WALL, TRIM THE PROTECTION TUBES TO FIT WALL THICKNESS. BE CAREFUL NOT TO DAMAGE LED CABLE.
10. MOUNT POWER SUPPLY HOUSING INSIDE BUILDING OPPOSITE SIGN SECTIONS.
11. MAKE ALL SECONDARY AND PRIMARY ELECTRICAL CONNECTIONS.
12. TEST LIGHT SIGN.
13. ATTACH WIRE AND POWER SUPPLY COVERS.
14. CLEAN SITE OF ALL INSTALLATION DEBRIS.
15. INSTALLATION TO MEET ALL CODE REQUIREMENTS.

ELECTRICAL REQUIREMENTS:

MAXIMUM OF (48) LED'S TO (1) POWER SUPPLY
 LED: SLOAN PRISM WHITE 4000K PN:701269-4WSJ1-MB
 POWER SUPPLY: 60C1 12 VDC POWER SUPPLY PN: 701507-60C1 @ 0.7A EACH

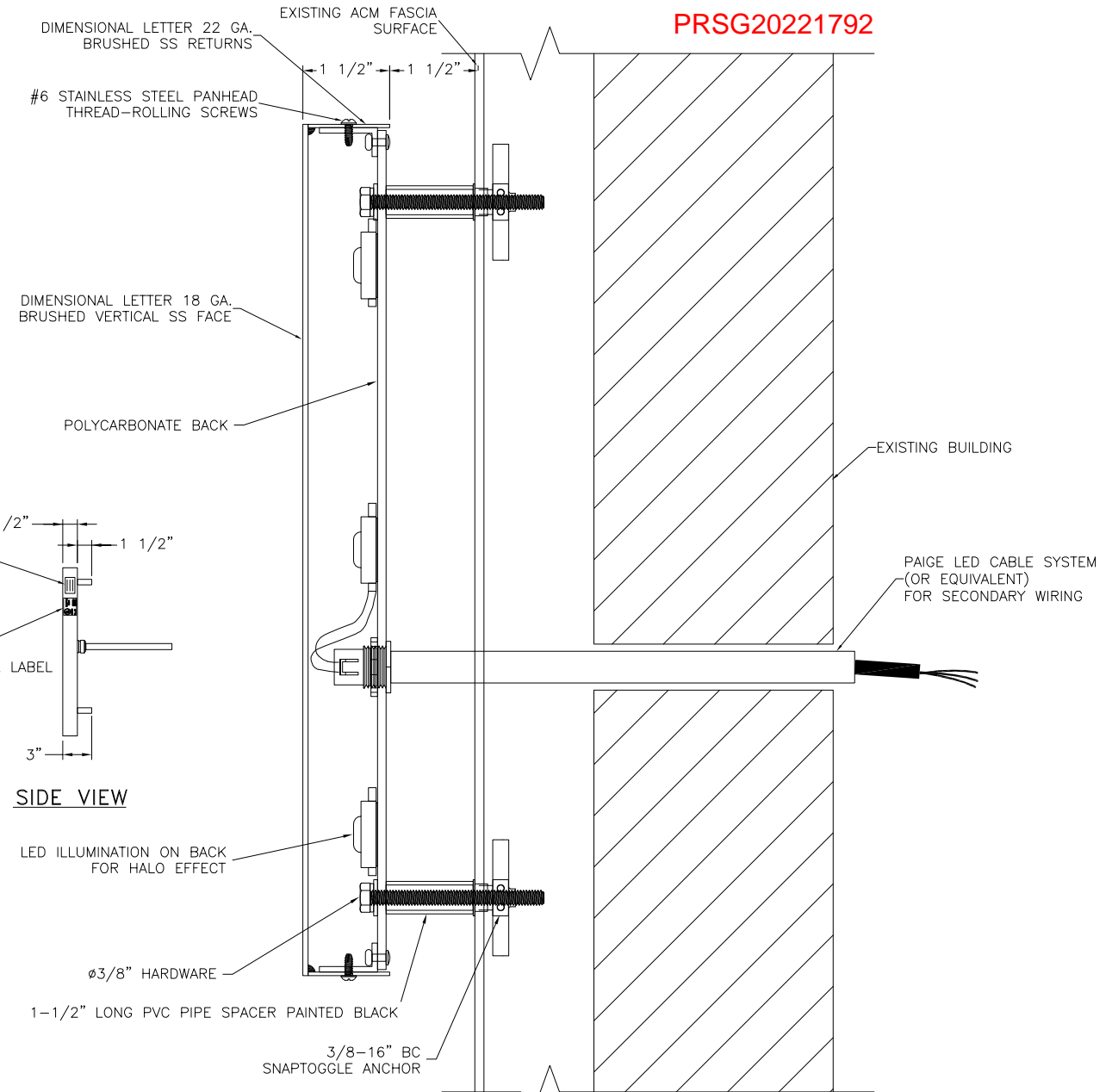
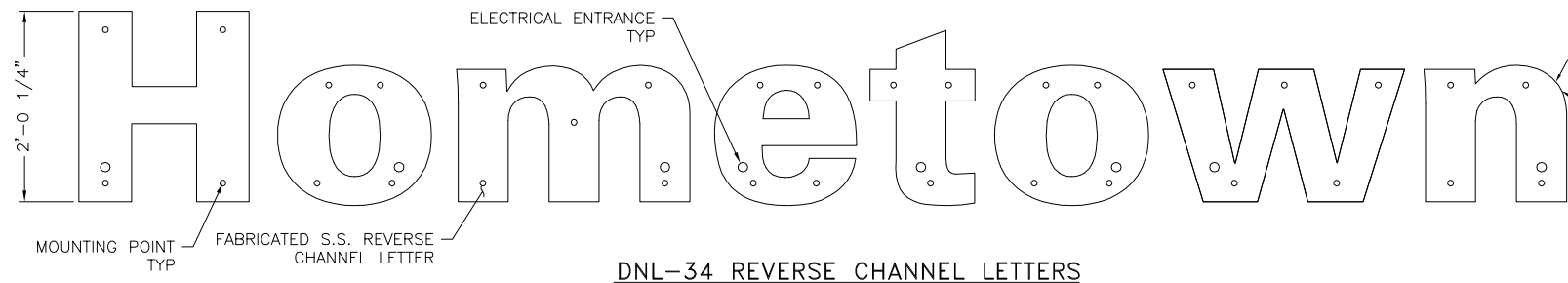
CONSTRUCTION & INSTALLATION OF CHANNEL LETTERS SHALL CONFORM TO ALL UL, NEC, CSA AND LOCAL CODES

POUNCE PATTERN SHALL BE SUPPLIED BY LETTERSET MANUFACTURER.

CRATES AND WEIGHTS ("HOMETOWN" EXAMPLE)
 AREA: 14.6 SQ FT (1.4 SQ METERS)
 ESTIMATED CRATED VOLUME: 13.8 CUBIC FT (0.4 CUBIC M)
 ESTIMATED CRATED WEIGHT: 75 LBS (33 kg)
 ESTIMATED UNCRATED WEIGHT: 45 LBS (20 kg)

ELECTRICAL REQUIREMENTS ("HOMETOWN" EXAMPLE)
 LEDs: (136) SLOAN PRISM WHITE 4000K PN:701269-4WSJ1-MB
 POWER SUPPLIES: (3) 60C1 12 VDC PN: 701507-60C1 @ 0.7A EACH
 TOTAL LOAD: 2.1A @ 120V
 CIRCUITS: (1) 20 AMP REQUIRED

FN	SHIPPING LIST	QTY
1	DNL-34 DEALER NAME LETTERSET-BRUSHED	1
2	Ø3/8"x5" S.S. BOLTS W/ HARDWARE	A/R
3	3/8" BC SNAPTOGGLE HEAVY-DUTY ANCHORS	A/R
4	POWER SUPPLIES (AS REQUIRED PER LED LAYOUT)	A/R
5	WEATHERPROOF POWER SUPPLY ENCLOSURE (1 FOR EVERY 2 POWER SUPPLIES)	A/R
6	PAIGE 18" WALL FEED THROUGH PROTECTION TUBE (W/ LED RIP STRIP & GROUND)	A/R
7	1-1/2" LONG PVC PIPE SPACER PAINTED BLACK	A/R
8	---	---
9	POUNCE PATTERN (SEND FULL-SIZE PAPER COPY OF MOUNTING PATTERN)	1
10	CARDBOARD BOXES (PACKAGE INSTALL KIT, EXCEPT POUNCE PATTERN)	A/R
11	CARDBOARD TUBE (PACKAGE POUNCE PATTERN)	1
12	INSTALL DRAWING PRINTED ON 11 X 17 PAPER	1



**DNL-34 JEEP LETTERSET BRUSHED (INSTALL)
 HALO-LIT REVERSE CHANNEL LETTERS W/ 1-1/2" STANDOFFS**

DO NOT WIRE LEDs DIRECTLY TO 120V
 LEDs MUST BE WIRED THRU MAIN POWER SUPPLY

principle
 Principle Group
 2035 Lakeside Centre Way
 Suite 250
 Knoxville, TN 37922
 Main: 865.692.4058
 Toll-free: 877.692.4058
 www.principleglobal.com

The following document is for design intent purposes only and is the intellectual property of Principle Group. It shall not be reproduced and/or distributed for any purpose without prior written approval. The manufacturer shall be responsible for all structural, electrical, mechanical, and foundation engineering. These documents were not produced under an engineering services agreement.

Rev	Date	Initials	Description of change
A	1/23/19	AAA	REMOVED RIVERNUT PLUSNUTS AND 3/8" HARDWARE, UPDATED INSTALLATION NOTES, UPDATED SHIPPING LIST
RTP	6-18-18	WJS	DRAWING CHECKED & APPROVED

principle Latest Revision: **A**
 Drawing by: EZA Date: 6/18/18
 Description: DNL-34 HALO LIT REVERSE CHANNEL LETTERS-BRUSHED (INSTALL)
 Customer: JEEP
 Sht 1 of 1 Drawing: C097857

INSTALLATION INSTRUCTIONS:

1. INSTALLER IS TO MAKE SURE ACM PANEL IS SECURELY ATTACHED TO WALL BEFORE CHANNEL LETTER INSTALLATION.
2. SECURE POUNCE PATTERN TO ACM WALL.
3. DRILL ELECTRICAL HOLES INTO WALL.
4. DRILL MOUNTING HOLES INTO ACM PANEL ONLY.
5. INSTALL 3/8-16 BC SNAPTOGGLE ANCHOR BY HOLD ENDS STRAPS AND PULL TOWARDS YOU UNTIL CHANNEL RESTS FLUSH BEHIND ACM PANEL. SLIDE PLASTIC CAP ALONG STRAPS WITH OTHER HAND UNTIL FLANGE OF CAP IS FLUSH WITH WALL. SNAP OFF STRAPS WHEN IT IS FIRMLY SECURITY TO ACM PANEL.
6. INSTALL LED CABLE PROTECTION TUBES (18"/457mm LONG) INTO THE REAR OF SIGN. PUSH THE BEVELED END OF EACH PROTECTION TUBE INTO REAR OF EACH LOCKING BUSHING UNTIL YOU HEAR AND FEEL THE TWO LOCK TOGETHER.
7. ADD A BEAD OF NON-HARDENING CAULK AROUND EACH HOLE WHERE MOUNTING HARDWARE PENETRATES THE WALL TO INSURE WATER TIGHTNESS.
8. MOUNT LETTERS TO WALL AS SHOWN.
9. BEHIND THE WALL, TRIM THE PROTECTION TUBES TO FIT WALL THICKNESS. BE CAREFUL NOT TO DAMAGE LED CABLE.
10. MOUNT POWER SUPPLY HOUSING INSIDE BUILDING OPPOSITE SIGN SECTIONS.
11. MAKE ALL SECONDARY AND PRIMARY ELECTRICAL CONNECTIONS.
12. TEST LIGHT SIGN.
13. ATTACH WIRE AND POWER SUPPLY COVERS.
14. CLEAN SITE OF ALL INSTALLATION DEBRIS.
15. INSTALLATION TO MEET ALL CODE REQUIREMENTS.

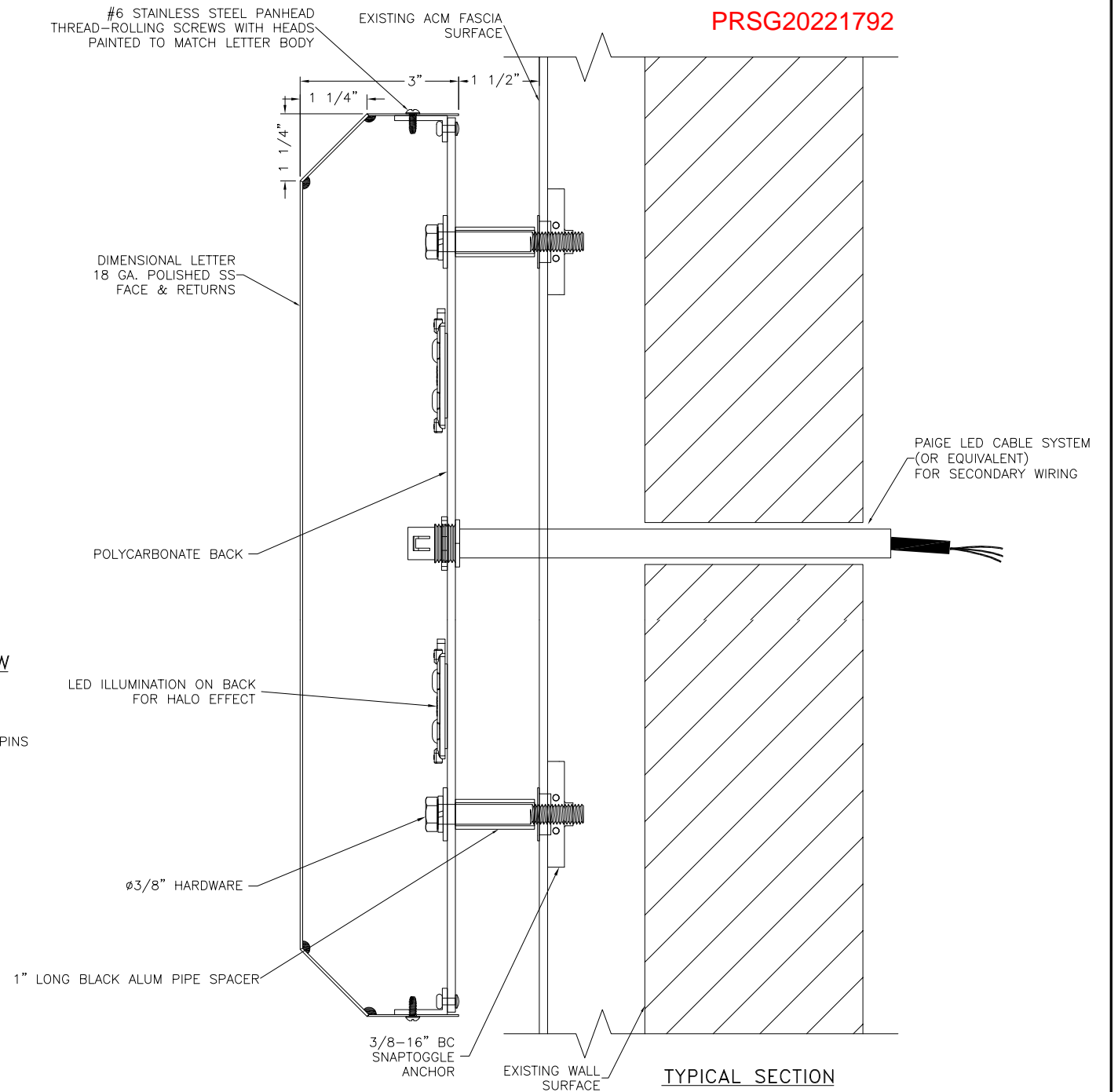
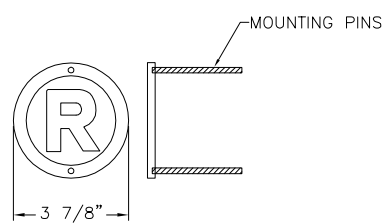
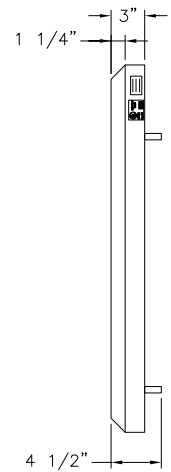
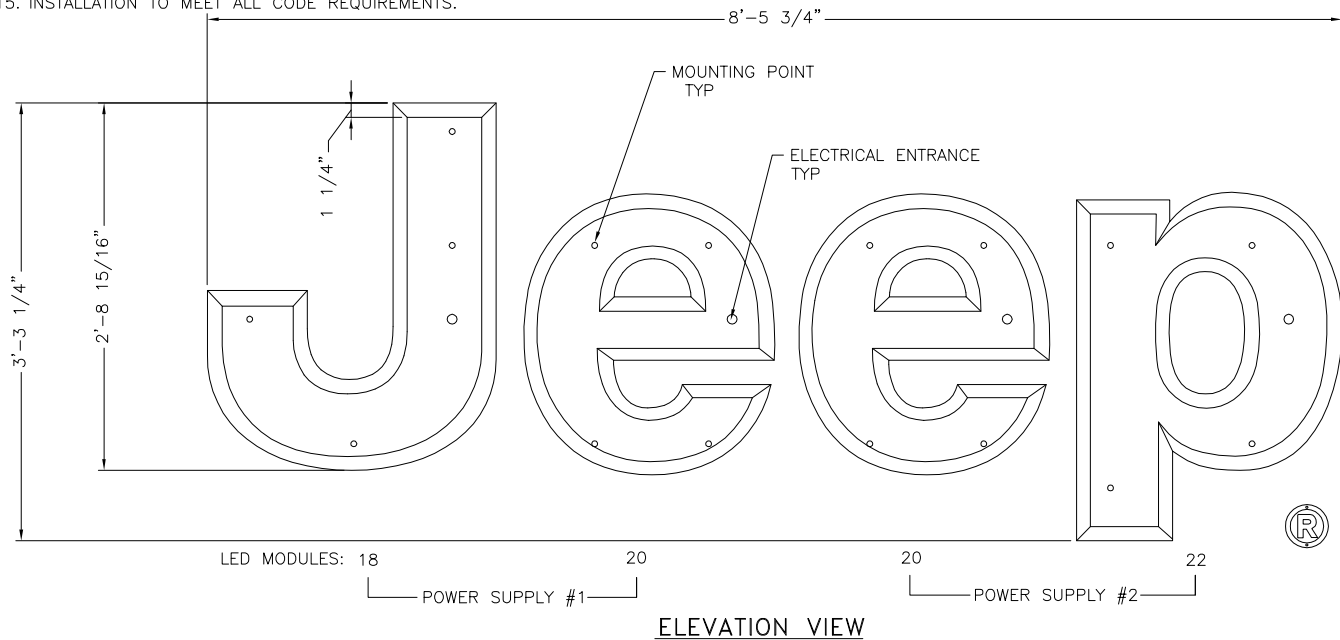
COLOR & MATERIAL GUIDE

LETTER FACES & BEVELS: 18GA STAINLESS STEEL 316 WITH BRUSHED VERTICAL SATIN #4 FINISH
LETTER RETURNS: 22GA STAINLESS STEEL 316 WITH BRUSHED VERTICAL SATIN #4 FINISH
STANDOFFS: 1.5" LONG BLACK ALUMINUM PIPE SPACER PAINTED BLACK
REGISTRATION MARK (CIRCLE & R): 3M DARK GRAY 180C-441 DARK VINYL W/ 3M UV OVERLAMINATE 3642GPS ON 1/4" STAINLESS STEEL ALLOY 316 WITH VERTICAL BRUSHED SATIN #4 FINISH

CONSTRUCTION & INSTALLATION OF CHANNEL LETTERS SHALL CONFORM TO ALL UL, NEC, CSA AND LOCAL CODES

POUNCE PATTERN SHALL BE SUPPLIED BY LETTERSET MANUFACTURER.

FN	SHIPPING LIST	QTY
1	J-34 JEEP LETTERSET WITH REGISTRATION MARK	1
2	Ø3/8"x5" S.S. BOLTS W/ HARDWARE	16
3	3/8-16 BC SNAPTOGGLE ANCHOR	16
4	POWER SUPPLIES (AS REQUIRED PER LED LAYOUT)	A/R
5	WEATHERPROOF POWER SUPPLY ENCLOSURE	1
6	PAIGE 18" WALL FEED THROUGH PROTECTION TUBE (W/ LED RIP STRIP & GROUND)	4
7	1.5" LONG BLACK ALUMINUM PIPE SPACER	16
8	TOUCH-UP PAINT	A/R
9	POUNCE PATTERN (SEND FULL-SIZE PAPER COPY OF MOUNTING PATTERN)	1
10	CARDBOARD BOXES (PACKAGE INSTALL KIT, EXCEPT POUNCE PATTERN)	A/R
11	CARDBOARD TUBE (PACKAGE POUNCE PATTERN)	1
12	INSTALL DRAWING C098410 PRINTED ON 11 X 17 PAPER	1



ELECTRICAL INFORMATION

LEDS: EXPRESS (QTY-80) SLOAN VL4 701269-6W2A1-MB MODULE - WHITE, 6,500 KELVINS, 0.96 WATTS
 MAXIMUM OF (56) LED'S TO (1) 60W POWER SUPPLY
 LED POWER SUPPLY: (2) SLOAN 60C1 12V DC
 TOTAL CONNECTION LOAD: 1.4 AMPS @ 120V
 CIRCUITS REQUIRED: (1) 20 AMP
 ALL ELECTRICAL COMPONENTS TO BE UL LISTED
 GROUNDING PER UL AND NEC SPECIFICATIONS

CRATES AND WEIGHTS

AREA: 27.7 SQ FT (2.6 SQ METERS)
 ESTIMATED CRATED VOLUME: 24.6 CUBIC FT (0.7 CUBIC M)
 ESTIMATED CRATED WEIGHT: 153 LBS (69 kg)
 ESTIMATED UNCRATED WEIGHT: 97 LBS (44 kg)

**J-34 JEEP LETTERSET (INSTALL)
 HALO-LIT REVERSE CHANNEL LETTERS W/ 1.5" STANDOFFS**

principle

Principle Group
 2035 Lakeside Centre Way
 Suite 250
 Knoxville, TN 37922
 Main: 865.692.4058
 Toll-free: 877.692.4058
 www.principleglobal.com

The following document is for design intent purposes only and is the intellectual property of Principle Group. It shall not be reproduced and/or distributed for any purpose without prior written approval. The manufacturer shall be responsible for all structural, electrical, mechanical, and foundation engineering. These documents were not produced under an engineering services agreement.

Rev	Date	Initials	Description of change
-	----	---	-
-	----	---	-
-	----	---	-
-	----	---	-
-	----	---	-
-	----	---	-
A	6-1-20	JHP	UPDATED UV OVERLAMINATE TO 3M SCOTCHCAL 3642GPS. UPDATED LED TO SLOAN VL4.
RTP	10-9-19	WJS	DRAWING CHECKED & APPROVED

principle Latest Revision: **A**

Drawing by: FCM Date: 10-9-19

Description: J-34 (INSTALL)

Customer: FCA

Sht 1 of 1 Drawing: C098410