

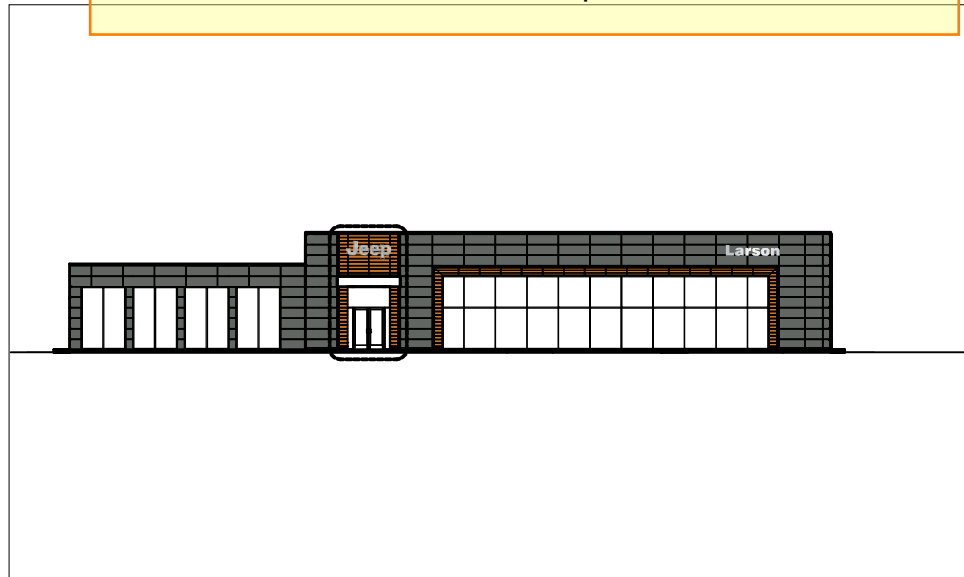
THE APPROVED CONSTRUCTION PLANS AND ALL ENGINEERING MUST BE POSTED ON THE JOB AT ALL INSPECTIONS IN A VISIBLE AND READILY ACCESSIBLE LOCATION.

Approval of submitted plans is not an approval of omissions or oversight by this office or noncompliance with any applicable regulations of local government. The contractor is responsible for making sure that the building complies with all applicable building codes and regulations of the local government.



# SITE BRANDBOOK

Building Review Comments:  
Signs attached to structure.  
See attachment details sheets: separate sheets.



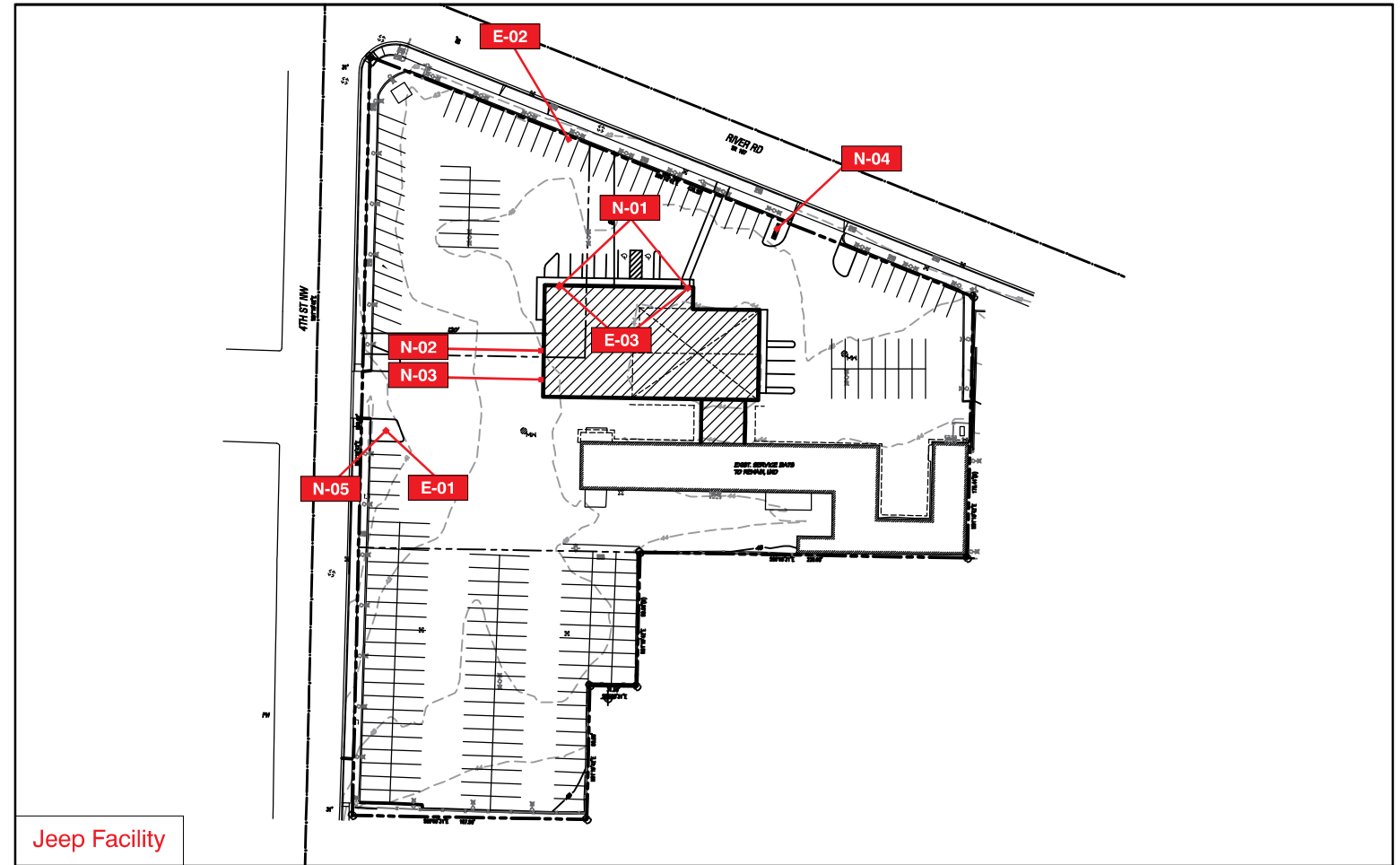
**City of Puyallup Building REVIEWED FOR COMPLIANCE**

RayC  
05/04/2023  
11:24:55 AM

City of Puyallup  
Development & Permitting Services  
ISSUED PERMIT

Building	Planning
Engineering	Public Works
Fire	Traffic

- I ..... CODE RESEARCH
- II ..... INVENTORY/SITE PLAN
- III ..... INVENTORY/RECOMMENDATION
- IV ..... RECOMMENDED SIGN DETAIL



INVENTORY			RECOMMENDATION	
Sign	Existing Type	Action	Sign Type	Description
E-01	Custom CPO Pylon	RO	Pylon	Dealer to Remove Only
E-02	Custom 3M Panagraphic Reface	RO	Pylon	Remove Only
E-03	12 Series Ram Badge, 30 DNL"	RO	Wall Sign	Remove Only
N-01	No Existing Sign	New	Wall Sign	J-34 Jeep Letters, DNL-34 Dealer Name Letters
N-02	No Existing Sign	New	Wall Sign	Support Channel Letters Service
N-03	No Existing Sign	New	Wall Sign	Support Channel Letters Express Lane
N-04	No Existing Sign	New	Monument	JT-5 Jeep Totem at 20'-0" OAH
N-05	No Existing Sign	New	Monument	JM-4 Jeep Monument at 10'-0" OAH

RO - Remove Only    LS - Leave Sign    RL - Relocate    RR - Remove/Replace    RTF - Retro-fit    RF - Reface





Dealer to remove



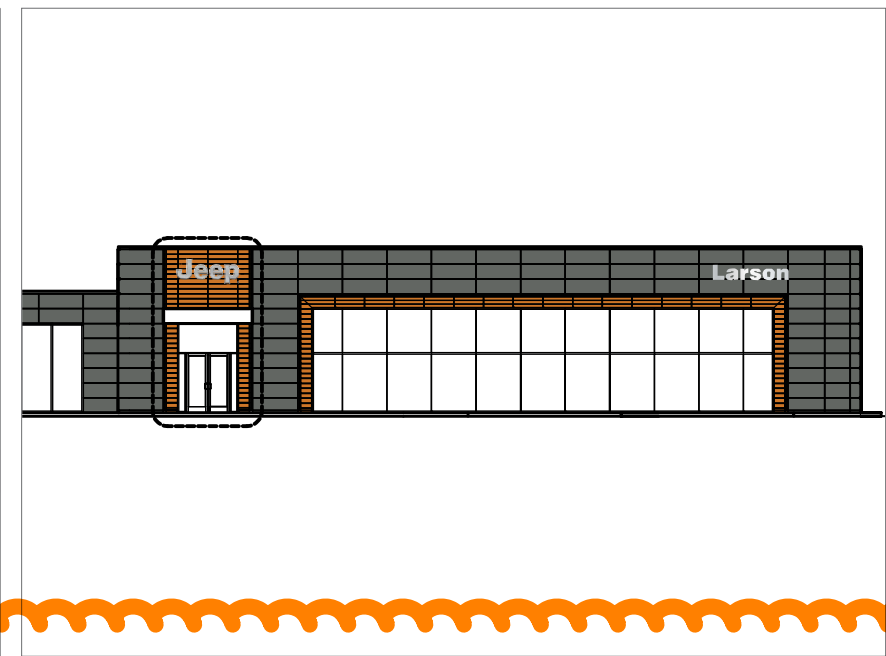
N-01

Sign Text / Description		
12 Series Ram Badge, 30" DNL		
Height	Width	Depth
N/A	N/A	N/A
Letter Height	Height Off Ground	
N/A	N/A	
Face Material	Sign Material	
N/A	N/A	
Visible Opening	Retainer Size	
N/A	N/A	
Surface Material	Surface Color	
N/A	N/A	
Illuminated	Illumination Type	
N/A	N/A	
Double Face	Mount	
N/A	N/A	



**Inventory Comments**  
Photo represents existing site conditions.

Recommended Action
New Sign
Recommended Sign
J-34 Jeep Letters DNL-34 Dealer Name Letters
Wall Repair Action
N/A



Building Review Comment:  
Contractor to verify backing required prior to installation.

City of Puyallup  
Development & Permitting Services  
ISSUED PERMIT

Building	Planning
Engineering	Public Works
Fire	Traffic

RECOMMENDATION

**Recommendation Comments**  
Dealer to provide a minimum 3/4" plywood backing behind signs and primary electrical at point of installation. Dealer to provide a minimum 2'x2' access panel at each sign location. Principle will install new Jeep and Dealer Name Letters and make final electrical connection.

N-02

INVENTORY

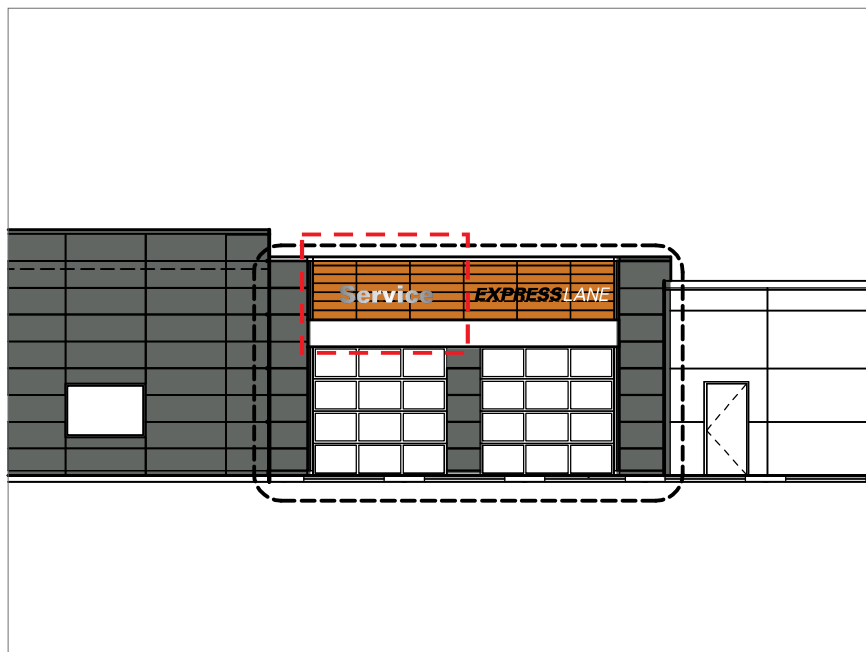
Sign Text / Description		
No Existing Sign		
Height	Width	Depth
N/A	N/A	N/A
Letter Height	Height Off Ground	
N/A	N/A	
Face Material	Sign Material	
N/A	N/A	
Visible Opening	Retainer Size	
N/A	N/A	
Surface Material	Surface Color	
N/A	N/A	
Illuminated	Illumination Type	
N/A	N/A	
Double Face	Mount	
N/A	N/A	



Inventory Comments
N/A

RECOMMENDATION

Recommended Action
New Sign
Recommended Sign
Support Channel Letters Service
Wall Repair Action
N/A



**Recommendation Comments**  
 Dealer to provide a minimum 3/4" plywood backing behind signs and primary electrical at point of installation. Dealer to provide a minimum 2'x2' access panel at each sign location. Principle will install a new Service Letters and make final electrical connection.

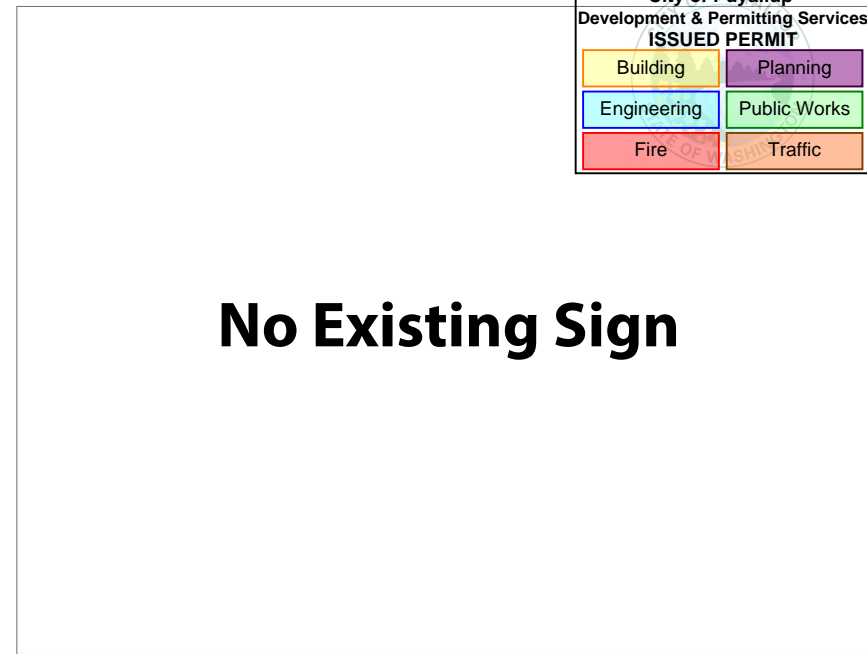
N-03

City of Puyallup  
 Development & Permitting Services  
 ISSUED PERMIT

Building	Planning
Engineering	Public Works
Fire	Traffic

INVENTORY

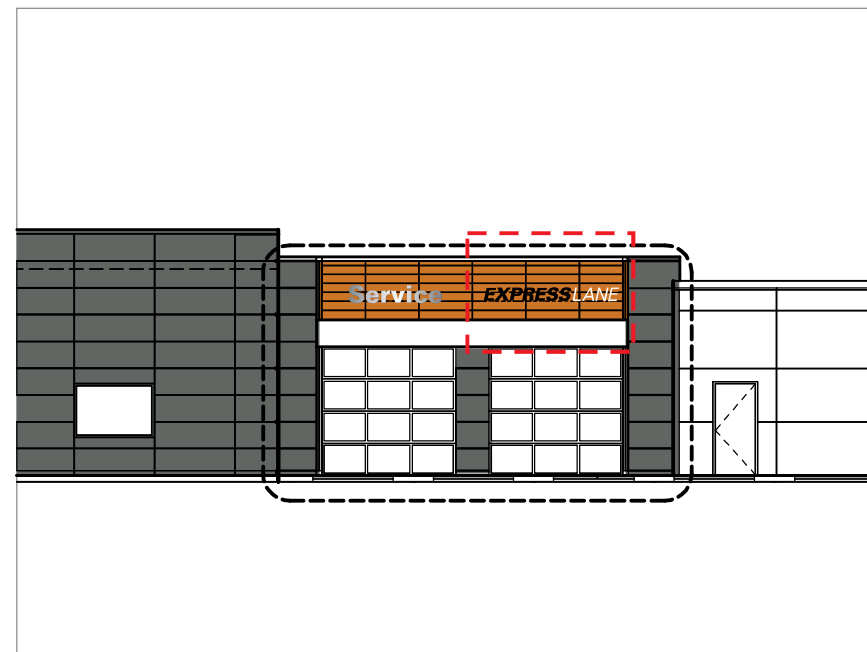
Sign Text / Description		
No Existing Sign		
Height	Width	Depth
N/A	N/A	N/A
Letter Height	Height Off Ground	
N/A	N/A	
Face Material	Sign Material	
N/A	N/A	
Visible Opening	Retainer Size	
N/A	N/A	
Surface Material	Surface Color	
N/A	N/A	
Illuminated	Illumination Type	
N/A	N/A	
Double Face	Mount	
N/A	N/A	



Inventory Comments
N/A

RECOMMENDATION

Recommended Action
New Sign
Recommended Sign
Support Channel Letters Express Lane
Wall Repair Action
N/A

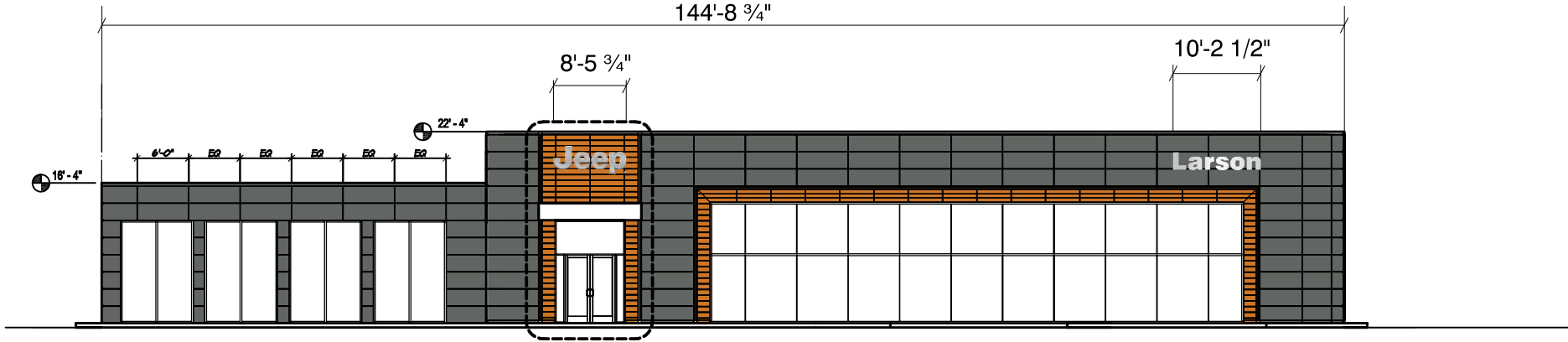


**Recommendation Comments**  
 Dealer to provide a minimum 3/4" plywood backing behind signs and primary electrical at point of installation. Dealer to provide a minimum 2'x2' access panel at each sign location. Principle will install a new Express Lane Letters and make final electrical connection.



ELEVATIONS

City of Puyallup Development & Permitting Services ISSUED PERMIT	
Building	Planning
Engineering	Public Works
Fire	Traffic

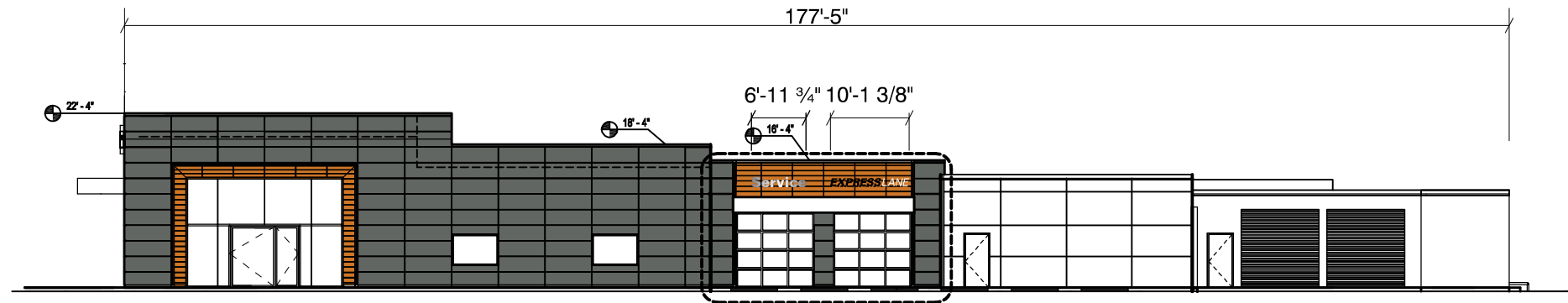


All building dimensions are approximate; field survey required.  
Available wall area must be verified in field prior to installation.



# ELEVATIONS

City of Puyallup Development & Permitting Services ISSUED PERMIT	
Building	Planning
Engineering	Public Works
Fire	Traffic



All building dimensions are approximate; field survey required.  
Available wall area must be verified in field prior to installation.



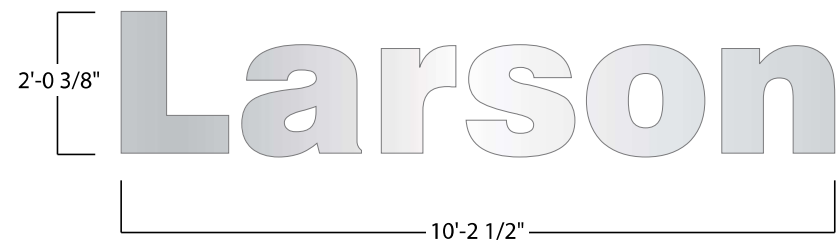
**DNL-34  
DEALER NAME LETTERS**

**Square Footage**

- 20.74 ft<sup>2</sup>

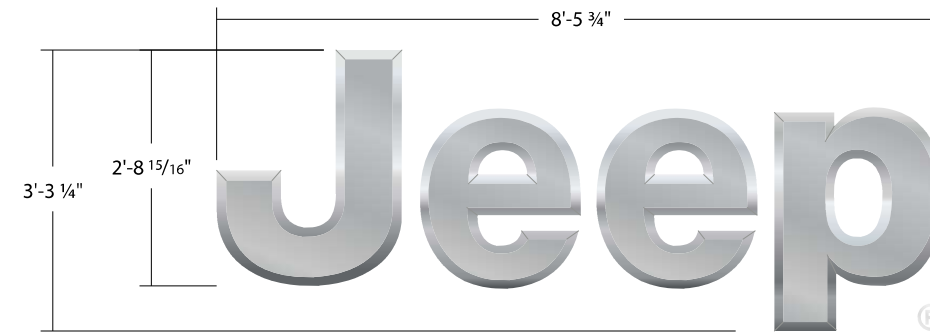
**Manufacturing Details**

- 1-1/2" deep, brushed stainless steel
- LED halo illumination



**J-34  
JEEP LETTERS**

City of Puyallup Development & Permitting Services ISSUED PERMIT	
Building	Planning
Engineering	Public Works
Fire	Traffic



**Square Footage**

- 27.73 ft<sup>2</sup>

**Manufacturing Details**

- 3" deep, beveled and brushed stainless steel
- LED halo illumination
- 18GA stainless steel 304 with brushed vertical satin #4 finish letter faces & bevels
- 22GA stainless steel 304 with brushed aluminum vertical satin #4 finish letter returns
- Standoffs 1.5" long black aluminum pipe spacer painted black
- Registration Mark 3M Dark Gray 180C-441 dark vinyl on 1/4" stainless steel alloy 304 with vertical brushed satin #4 finish

**Illumination**

- (80) Sloan Prism White 6500k 7012969-6WSJI-MB Module
- Power supply (1) 120D1 12V DC
- Total Connection Load: 1.7A @ 120 V
- Circuits Required; (1) 20 Amp
- All electrical component to be UL Listed grounding per UL and NEC specifications



**SIGN DETAIL**

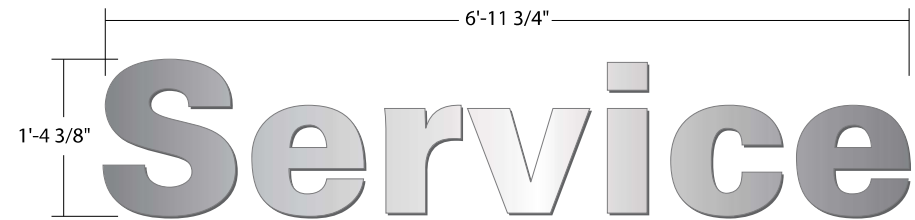
**SUPPORT  
CHANNEL LETTERS  
SERVICE**

**Square Footage**

■ 9.52 ft<sup>2</sup>

**Manufacturing Details**

- 3" deep fabricated channel letters
- Letters are LED face illuminated
- Letters are decorated w/ silver film, illuminates white



**SIGN DETAIL**

**SUPPORT  
CHANNEL LETTERS  
EXPRESS LANE**

**Square Footage**

■ 9.80 ft<sup>2</sup>

**Manufacturing Details**

- 3" deep fabricated channel letters
- Letters are LED face illuminated
- Express is decorated w/ black dual color film, illuminates white
- Lane is white acrylic and illuminates bright white

City of Puyallup Development & Permitting Services ISSUED PERMIT	
Building	Planning
Engineering	Public Works
Fire	Traffic

