

PRFUP20230543

Hydromax USA

Project located at 4627 S Meridian Puyallup WA

Work Hours 9am-3pm M-F

Scope of Work: Inspect sewer line from manhole

Duration of Work: Approx 2-3 Hours

Contact Information: Andy Kirkbride. andy.kirkbride@hydromaxusa.com



TRAFFIC CONTROL SERVICES

A Professional Flagging Service

Traffic control devices shall be 28 inch retro-reflective cones
 Distance between cones equals speed limit in unit feet
 Distance between signs is mandatory unless field conditions determine otherwise
 Taper length equals width of offset times speed squared divided by 60
 Sign spacing shall be 100 feet when speed limits is 30 MPH or less
 Sign spacing shall be 350 feet when speed limit is greater than 30 MPH

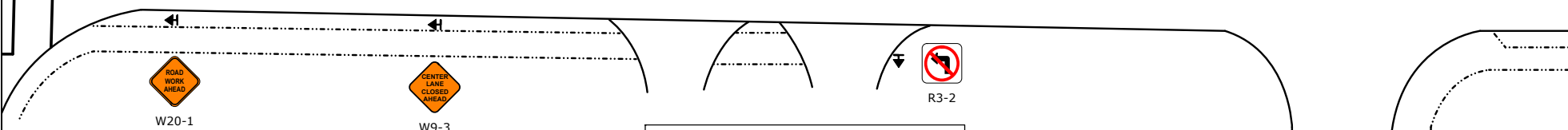
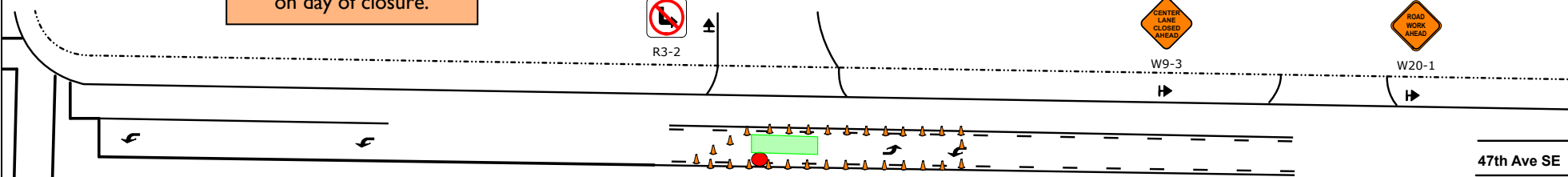
Traffic Control Plan

Not to Scale
 Street use permit#



Closure Allowed
 Monday - Thursday
 9AM - 3PM
 Call communications
 center at 253-287-4456
 on day of closure.

A minimum of 11' lanes must be maintained in
 both directions at all times. Otherwise the
 use of flaggers are required. See City of
 Puyallup's TCP No. 07



Legend

- Cone
- R3-2 no left turn
- W20-1 Road Work Ahead
- W9-3 center lane closed ahead
- Work Area

MINIMUM TAPER LENGTH (L) IN FEET

LANE WIDTH (FEET)	POSTED SPEED (MPH)									
	25	30	35	40	45	50	55	60	65	70
10	105	150	205	265	450	500	550	-	-	-
11	115	165	225	295	495	550	605	660	-	-
12	125	180	245	320	540	600	660	720	780	840

CHANNELIZING DEVICES SPACING (FEET)

MPH	TAPER	TANGENT
50/70	40	80
35/45	30	60
25/30	20	40

SUGGESTED ADVANCE WARNING SIGN PLACEMENT

ROAD TYPE	SPEED	DISTANCE BETWEEN SIGNS			
		A	B	C	D
URBAN/LOW MPH	25/30	200'	200'	200'	X
URBAN/HIGH MPH	35/40	350'	350'	350'	X
RURAL	45/60	500'	500'	500'	500'
RURAL HWAYS	60/65	800'	800'	800'	800'
FREEWAYS/EXPRESSWAYS	55/70	1500'	1500'	1500'	1500'

General Notes:

1. Notify transit for bus stop relocation and/or relevant access impediments
2. Priority pass through work area for emergency vehicles shall be provided at all times
3. All signs, channelization devices and spacing shall conform to MUTCD
4. Channelizing devices shall be 28" retroreflective cones (see table for spacing)
5. All spacing must accommodate at-grade intersections and/or driveways
6. Maintain 11' travel widths

Flaggers shall remain in radio contact at all times

The applicant shall notify property owner(s) of blocked driveway(s) at least 24 hours in advance.

Work shall immediately cease in the work zone for a pedestrian spotter, available at all times, to escort pedestrians around the work area

City of Puyallup
 Development & Permitting Services
ISSUED PERMIT

Building	Planning
Engineering	Public Works
Fire	Traffic

Adam C Taylor, TCS #011872
 Expiration 04-30-2023
 Adam@trafficcontrolservices.net
 O: 206.492.9364