

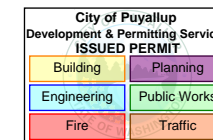
46.99 HIP LINE
 307.89 RAKE OVERHANG LINES
 214.13 RIDGE LINE
 246.25 RIDGE MATERIAL
 277.46 HORIZONTAL OVERHANG LINES
 289.6 VALLEY LINES
 7002.78 ROOF AREA

SQUARE FOOTAGE IS ESTIMATED.
 CONTRACTORS/FRAMERS WILL NEED
 TO VERIFY

PLEASE VERIFY THE FOLLOWING

1. DIMENSIONS
2. BRG WALLS
3. FAU IN TRUSS
4. SEE CLOUDED NOTES
5. 2X6 COMMON VENT BLOCKS

8/12 PITCH (EXCEPT WHERE NOTED)
 12" O.H. @ 4/12
 12" & 7 1/4" O.H. @ 8/12
 25-15-0-10 LOADING
 110 MPH WIND
 2018 CODE
 ALL FLAT CEILINGS
 FAU IN TRUSS
 SPRINKLER LOAD
 2X6 TOP CHORDS

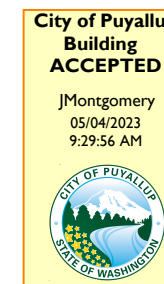


PRMU20221555

116 2X6 VENT BLOCKS

HANGERS

JUS24 55
 SNP3 4
 THD26 48

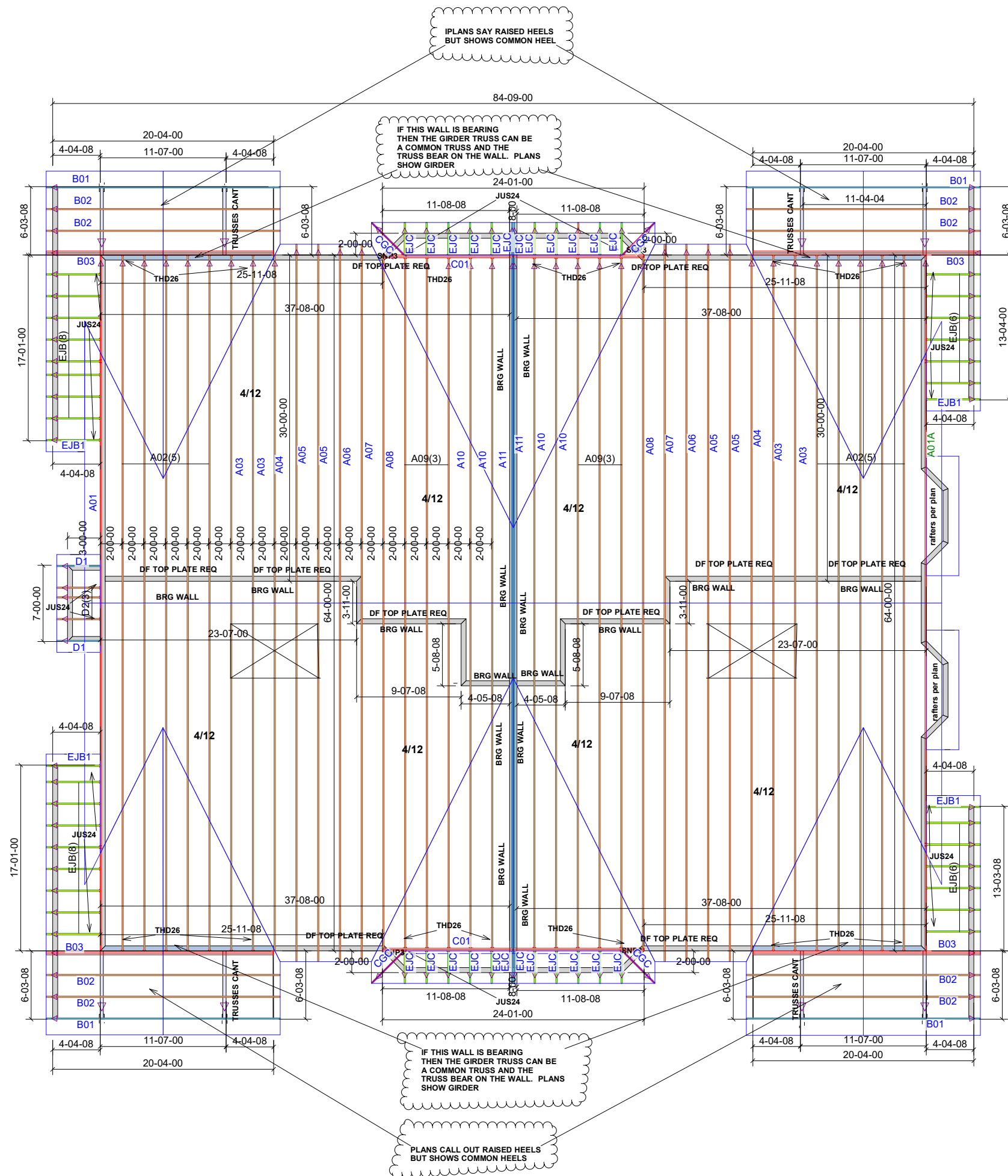


THE APPROVED CONSTRUCTION PLANS,
 DOCUMENTS AND ALL ENGINEERING MUST
 BE POSTED ON THE JOB AT ALL
 INSPECTIONS IN A VISIBLE AND READILY
 ACCESSIBLE LOCATION.

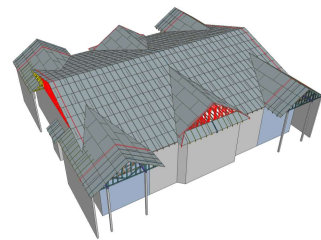
FULL SIZED LEDGIBLE COLOR PLANS ARE
 REQUIRED TO BE PROVIDED BY THE
 PERMITEE ON SITE FOR INSPECTION

** IMPORTANT **

◀ = INDICATES LEFT END



Sales Rep: Ryan Kittelson
 Estimate By: Deana Veith
 Finalized By: Deana Veith
 Date: 11/8/2022



Customer: BRC Family LLC
 Job Name: Copperberry Condos North
 Job Number: J1128349A
 Plan:

Drawing Type: Roof Trusses
 Loading
 TC/LL = 25.0 lb
 TC/DL = 15.0 lb
 BC/DL = 10.0 lb
 WIND = 110 mph 'B'

Sheet Number:

1 of 1