

GOOD SAMARITAN HOSPITAL

D.R. #7 & #8 BUILDOUT

Fire Alarm and Detection System

Equipment Supplied By



Project Team Contact Information

Sales Representative

Tim Duggan
timothy.duggan@jci.com
Phone: 253-509-8816

Project Coordinator

Bryan Reimer
bryan.reimer@jci.com
Phone: 206-777-4933

Technician Scheduler

Yvonne Thompson
yvonne.thompson@jci.com
Phone: 206-777-4860

Project Designer

Eric Beck
eric.beck@jci.com
Phone: 206-777-4821
NICET Fire Alarm System Level III, #148077

DRAWING LIST			
SHEET NAME	DRAWING NAME	ELECTRONIC DRAWING NAME	INCLUDED IN THIS PROJECT
FA-COV-01	TITLE SHEET	FA-COVER	X
FA-COV-02	COVER SHEET	FA-COVER	X
FA-COV-02.1	COVER SHEET	FA-COVER	X
FA-COV-03	COVER SHEET	FA-COVER	X
FA-COV-04	COVER SHEET	FA-COVER	
FA-COV-05	COVER SHEET	FA-COVER	
FA-COV-06	PANEL LAYOUT	FA-COVER	
FA-COV-07	PANEL LAYOUT	FA-COVER	
FA-COV-08	PANEL LAYOUT	FA-COVER	
FA-COV-09	SUP. PANEL LAYOUT	FA-COVER	
FA-RIS-01	RISER SHEET	FA-RISER	
FA-RIS-02	RISER SHEET	FA-RISER	
FA-DET-01	DETAIL SHEET	FA-COVER	
FA-DET-02	DETAIL SHEET(T.L.)	FA-COVER	X
FA-SCP-01	SMOKE CONTROL PANEL	FA-SCP-01	
FA-LEVA-W	LEVEL A WEST FLOOR PLAN	FA-LEVEL A	
FA-LEVA-E	LEVEL A EAST FLOOR PLAN	FA-LEVEL A	
FA-LEV1-W	LEVEL 1 WEST FLOOR PLAN	FA-LEVEL 1	
FA-LEV1-E	LEVEL 1 EAST FLOOR PLAN	FA-LEVEL 1	
FA-LEV2-WD	LEVEL 2 WEST DEMO FLOOR PLAN	FA-LEVEL 2-D	X
FA-LEV2-W	LEVEL 2 WEST FLOOR PLAN	FA-LEVEL 2	X
FA-LEV2-E	LEVEL 2 EAST FLOOR PLAN	FA-LEVEL 2	
FA-LEV3-W	LEVEL 3 WEST FLOOR PLAN	FA-LEVEL 3	
FA-LEV3-E	LEVEL 3 EAST FLOOR PLAN	FA-LEVEL 3	
FA-LEV4-W	LEVEL 4 WEST FLOOR PLAN	FA-LEVEL 4	
FA-LEV4-E	LEVEL 4 EAST FLOOR PLAN	FA-LEVEL 4	
FA-LEV5-W	LEVEL 5 WEST FLOOR PLAN	FA-LEVEL 5	
FA-LEV5-E	LEVEL 5 EAST FLOOR PLAN	FA-LEVEL 5	
FA-LEV6-W	LEVEL 6 WEST FLOOR PLAN	FA-LEVEL 6	
FA-LEV6-E	LEVEL 6 EAST FLOOR PLAN	FA-LEVEL 6	
FA-LEV7-W	LEVEL 7 WEST FLOOR PLAN	FA-LEVEL 7	
FA-LEV7-E	LEVEL 7 EAST FLOOR PLAN	FA-LEVEL 7	
FA-LEV8-W	LEVEL 8 WEST FLOOR PLAN	FA-LEVEL 8	
FA-LEV8-E	LEVEL 8 EAST FLOOR PLAN	FA-LEVEL 8	
FA-ROOF-W	ROOF WEST FLOOR PLAN	FA-ROOF	
FA-ROOF-E	ROOF EAST FLOOR PLAN	FA-ROOF	

Johnson Controls
Solutions for the Built Environment
100 South 17th Street, Suite 100
Seattle, WA 98108
Phone: 206-291-1100
Fax: 206-291-1100
© 1992 Johnson Controls, Inc.

NO.	DATE	REVISION DESCRIPTION	ISSUED BY		PROJECT #	
			DES.	CHK.	CLIENT	PROJECT
46	1/25/13	DAILY MAINTENANCE RECORD DRAWINGS	REC	REC	60018145	60018145
47	9/12/12	ROOFER DOORS	DUP	REC	60018145	60018145
48	4/12/12	ADD FIRE-ACTION PANEL (PACKAGE)	ADD	ADD	60018145	60018145
49	8/12/12	D.R. #7 & #8 BUILDOUT	ADD	ADD	60018145	60018145

DRAWINGS REVIEWED BY:

Eric Beck
10/17/12
10/17/12

**FIRE ALARM SYSTEM
TITLE SHEET**

GOOD SAMARITAN - PATIENT CARE TOWER

401 10TH AVENUE SE
FOUNDRY, WA 98071

APPROVED BY:
C. McCAMMON

DRAWN BY:
C. McCAMMON

DATE:
8/12/09

SRP/PROJECT NUMBER:
458413141/943123501

SHEET NUMBER:
FA-COV-01

Sequence of Operation	Sequence of Operation																									
	Manual Station	Smoke Detection	Supervisory Smoke Detection*	Beam Smoke Detection	Corridor Smoke Detection	Anesthetizing Area Smoke Detection	IDF Room Smoke Detection	Primary Recall/Elevator Lobbies Smoke Detection	Elev Lobbies Except Primary Recall Smoke Detection	Elevator Mach Rm/Shaft Smoke Detection	Elevator Power Monitor	Duct Smoke Detection Supply Air Handler	Duct Smoke Detection Exhaust Air Handler	Duct Smoke Detection Supply Smoke/Fire Damper	Duct Smoke Detection Exhaust Smoke/Fire Damper	Heat Detection	Clean Agent System Control Panel	Flow Switch	Pressure Switch	High/Low Air Switch	Tamper Switch	Fire Pump	System Trouble	Pre-Action Alarm	Pre-Action Supervisory	Pre-Action Trouble
Activation of Local Alarm at FACP (LCD Display & Audible Indication)	X	X		X	X		X	X	X	X						X	X	X	X					X		
Activation of Local Alarm at Annunciator	X	X		X	X		X	X	X	X						X	X	X	X					X		
Activate Visible Devices Alarm Floor	X	X		X	X		X	X	X	X						X	X	X	X					X		
Activate Audible Devices Alarm Floor/Floor Above/Floor Below	X	X		X	X		X	X	X	X						X	X	X	X					X		
Release Door Holders Within Smoke Zone	X	X		X	X		X	X	X	X						X	X	X	X					X		
Release Door Holders Floor of Alarm	X																							X		
Release Elevator Door Smoke Curtains Local Detection Only		X		X	X		X										X							X		
Release Stair Door Locks Floor of Alarm	X	X		X	X		X	X	X	X						X	X	X	X					X		
Close Corridor Smoke/Fire Dampers Within Smoke Zone					X									X	X											
Close Smoke/Fire Dampers at Duct Det.														X	X											
Maintain Smoke/Fire Dampers in Anesthetizing Area Ducts in Open Position														X	X											
Shutdown AHU and SAHU Supply Fan											X															
Shutdown EAHU Exhaust Fan												X														
Send Signal to DDC for Shutdown of Associated AHU, SAHU and EAHU Fans											X	X	X	X												
Send Signal to DDC System					X		X				X	X	X	X		X										
Send Signal to DDC System For Smoke Removal Mode																										
Activate Stair Pressurization Fans	X	X		X	X		X	X	X						X	X	X							X		
Open Elevator Hoistway Vent Dampers							X	X	X																	
Initiate Primary Elevator Recall							X	X	X																	
Initiate Alternate Elevator Recall							X																			
Activate Elevator Hat Light									X																	
Transmit Alarm Signal To Central Station Monitor	X	X		X	X		X	X	X	X					X	X	X	X						X		
Trouble Indication at FACP																										
Trouble Indication at Annunciator																								X		X
Transmit Trouble Signal To Central Station Monitor																							X			X
Supv Indication at Annunciator			X		X						X	X	X	X	X					X	X	X		X		X
Transmit Supv Signal To Central Station Monitor			X		X						X	X	X	X	X					X	X	X		X		X

*NOTE: OPERATING ROOM FANS WILL OPERATE INDEPENDENTLY OF OTHERS IN SMOKE CONTROL ZONE, ONLY SHUTTING DOWN AFTER SMOKE IS DETECTED IN OPERATING ROOM.



Johnson Controls
 9500 Wilshire Blvd., Suite 100
 Beverly Hills, CA 90212
 TEL: 310.353.3000
 FAX: 310.353.3001
 WWW.JOHNCON.COM

PROJECT #	SUBSIDIARY	DRAWING NO.	DATE	REVISION	BY
DRAWINGS REVIEWED BY:					
NO.	DATE	REVISION DESCRIPTION	BY	DATE	BY
46	1/25/19	ISSUE FOR MANUFACTURE			
47	9/12/18	ISSUE FOR DOORS			
48	5/17/20	ISSUE FOR PANEL UPGRADE			

FIRE ALARM SYSTEM
COVER SHEET
GOOD SAMARITAN - PATIENT CARE TOWER
 400 WEST AVENUE, 8F
 FORTLAUDERDALE, FL 33401

APPROVED BY:	DRAWN BY:
C. McCAMMON	C. McCAMMON
DATE:	DATE:
8/12/09	8/12/09
SITE/PROJECT NUMBER:	
458413141/943123501	
SHEET NUMBER:	
FA-COV-02.1	

BATTERY CALCULATIONS - TPR2 - (Level 2)

Does the system have an Emergency Generator that meets NEC 708.17?

Yes X No

How many hours of battery standby are required?

X 4 24 48 96 (4 hours minimum w/ Emergency Generators)

Table with columns: Qty, Part #, Description, Standby Current (A), Total Standby (A), Alarm Current (A), Total Alarm (A). Includes Transponder Panel, Fire Alarm Control Panel, and various strobe sensors.

Transponder Panel - TPR2 (Level 2)

Table with columns: Description, Status (Spens, Not Avail, etc.). Includes Auxiliary Circuits for NF-AUX17 through NF-AUX25.

Table with columns: Description, Waits, Total Waits, Waits Provided. Includes Speaker Circuits for NF-SB80 through NF-SB97.

Table with columns: Description, Waits, Total Waits, Waits Provided. Includes INET Channel RMS for Level 3.

Table with columns: Current, Dist. (ft), Voltage Drop. Includes Signal Circuits - TPR2 (Level 2) for NF-SB84 through NF-SB97.

TPR2 - LEVEL 2

Summary table for TPR2 Level 2: 4100-0625 AUX 23-30, 4100-0622, 4100-1326 SIG 90-92, 4100-501 SIG 84-86, 4100-1328 SIG 96-98.

Summary table for TPR2 Level 2: 4100-501 SIG 84-83, 4100-501 SIG 80-81, 4100-501 SIG 82-83.

TPR3 - LEVEL 3

BATTERY CALCULATIONS - TPR3 - (Level 3)

Does the system have an Emergency Generator that meets NEC 708.17?

Yes X No

How many hours of battery standby are required?

X 4 24 48 96 (4 hours minimum w/ Emergency Generators)

Table with columns: Qty, Part #, Description, Standby Current (A), Total Standby (A), Alarm Current (A), Total Alarm (A). Includes Transponder Panel, Fire Alarm Control Panel, and various strobe sensors.

Transponder Panel - TPR3 (Level 3)

Table with columns: Description, Status (Spens, Not Avail, etc.). Includes Auxiliary Circuits for NF-AUX31 through NF-AUX38.

Table with columns: Description, Waits, Total Waits, Waits Provided. Includes Speaker Circuits for NF-SB98 through NF-SB115.

Table with columns: Description, Waits, Total Waits, Waits Provided. Includes INET Channel RMS for Level 5.

Table with columns: Current, Dist. (ft), Voltage Drop. Includes Signal Circuits - TPR3 (Level 3) for NF-SB102 through NF-SB115.

Summary table for TPR3 Level 3: 4100-0625 AUX 37-44, 4100-0622, 4100-1326 SIG 90-92, 4100-501 SIG 84-86, 4100-1328 SIG 96-98.

Summary table for TPR3 Level 3: 4100-501 SIG 78-83, 4100-501 SIG 78-83, 4100-501 SIG 79-83.

BATTERY CALCULATIONS - FACP N8 (4th Floor)

Does the system have an Emergency Generator that meets NEC 708.17?

Yes X No

How many hours of battery standby are required?

X 4 24 48 96 (4 hours minimum w/ Emergency Generators)

Table with columns: Qty, Part #, Description, Standby Current (A), Total Standby (A), Alarm Current (A), Total Alarm (A). Includes Fire Alarm Control Panel, Transponder Panel, and various strobe sensors.

Fire Alarm Control Panel - N8 (Level 4)

Table with columns: Description, Status (Not Avail, etc.). Includes Auxiliary Circuits for NF-AUX12 through NF-AUX19.

Table with columns: Description, Waits, Total Waits, Waits Provided. Includes Speaker Circuits for NF-SB21 through NF-SB27.

Table with columns: Description, Waits, Total Waits, Waits Provided. Includes INET Channel RM1 for Level 4.

Table with columns: Current, Dist. (ft), Voltage Drop. Includes Signal Circuits - FACP N8 (Level 4) for NF-SB21 through NF-SB27.

FACP N8 - LEVEL 4

Summary table for FACP N8 Level 4: 4100-0625 AUX 23-30, 4100-0622, 4100-1326 SIG 90-92, 4100-501 SIG 84-86, 4100-1328 SIG 96-98.

Summary table for FACP N8 Level 4: 4100-501 SIG 84-83, 4100-501 SIG 80-81, 4100-501 SIG 82-83.

BATTERY CALCULATIONS - TPRS - (Level 5)

Does the system have an Emergency Generator that meets NEC 708.17?

Yes X No

How many hours of battery standby are required?

X 4 24 48 96 (4 hours minimum w/ Emergency Generators)

Table with columns: Qty, Part #, Description, Standby Current (A), Total Standby (A), Alarm Current (A), Total Alarm (A). Includes Transponder Panel, Fire Alarm Control Panel, and various strobe sensors.

Transponder Panel - TPRS (Level 5)

Table with columns: Description, Status (Spens, Not Avail, etc.). Includes Auxiliary Circuits for NF-AUX18 through NF-AUX25.

Table with columns: Description, Waits, Total Waits, Waits Provided. Includes Speaker Circuits for NF-SB28 through NF-SB35.

Table with columns: Description, Waits, Total Waits, Waits Provided. Includes INET Channel RM2 for Level 5.

Table with columns: Current, Dist. (ft), Voltage Drop. Includes Signal Circuits - TPRS (Level 5) for NF-SB28 through NF-SB35.

TPRS - LEVEL 5

Summary table for TPRS Level 5: 4100-0625 AUX 37-44, 4100-0622, 4100-1326 SIG 90-92, 4100-501 SIG 84-86, 4100-1328 SIG 96-98.

Summary table for TPRS Level 5: 4100-501 SIG 78-83, 4100-501 SIG 78-83, 4100-501 SIG 79-83.



Johnson Controls logo and contact information: 401 North Avenue, 8th Floor, Fairfield, NJ 07004.

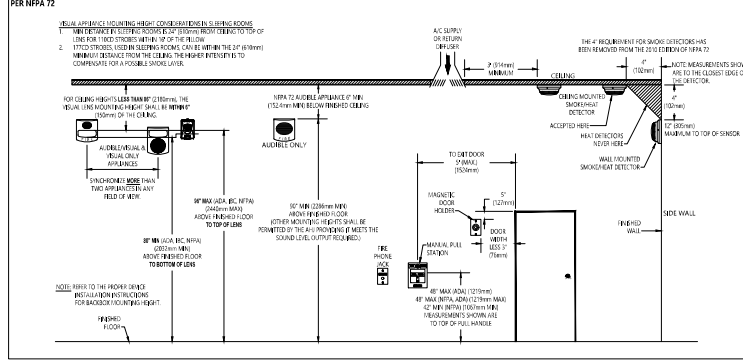
Table with columns: DATE, DRAWN BY, CHECKED BY, etc. Includes dates and names like C. McCammon.

DRAWINGS REVIEWED BY: [Name]

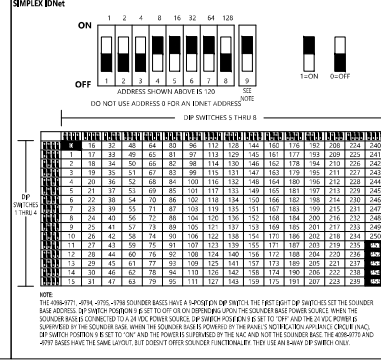
PROJECT INFORMATION: FIRE ALARM SYSTEM COVER SHEET, GOOD SAMARITAN - PATIENT CARE TOWER, 401 NORTH AVENUE, 8TH FLOOR, FAIRFIELD, NJ 07004.

DATE: 8/12/09, SPTS/PROJECT NUMBER: 456413141/943123501, DRAWN BY: C. McCammon, CHECKED BY: C. McCammon, REVISION: FA-COV-03

DEVICE MOUNTING HEIGHT REFERENCE



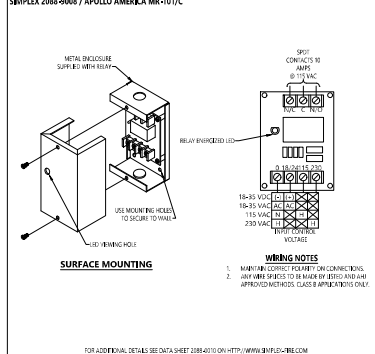
DIP SWITCH SETTINGS - INITIATING



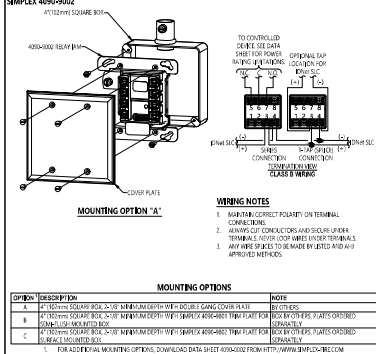
END OF LINE RESISTOR CODES

MODEL NUMBER	REF. NUMBER	Ω	BASE NUMBER	PART #	CIRCUIT TYPE	FIRE ALARM PANEL/MODULE
400-0000	170405	124	D15	RD	1	255 (NOCO) (PROT) (R15)
400-0000	170405	124	D15	RD	2	255 (NOCO) (PROT) (R15)
400-0000	170405	124	D15	RD	3	255 (NOCO) (PROT) (R15)
400-0000	170405	124	D15	RD	4	255 (NOCO) (PROT) (R15)
400-0000	170405	124	D15	RD	5	255 (NOCO) (PROT) (R15)
400-0000	170405	124	D15	RD	6	255 (NOCO) (PROT) (R15)
400-0000	170405	124	D15	RD	7	255 (NOCO) (PROT) (R15)
400-0000	170405	124	D15	RD	8	255 (NOCO) (PROT) (R15)
400-0000	170405	124	D15	RD	9	255 (NOCO) (PROT) (R15)
400-0000	170405	124	D15	RD	10	255 (NOCO) (PROT) (R15)

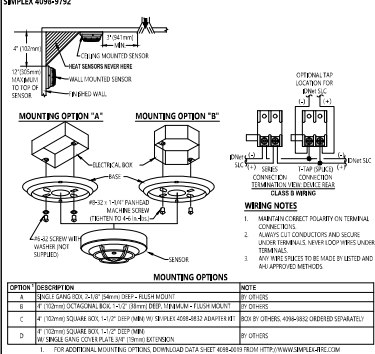
SPDT CONTROL RELAY



ADDRESSABLE RELAY MODULE

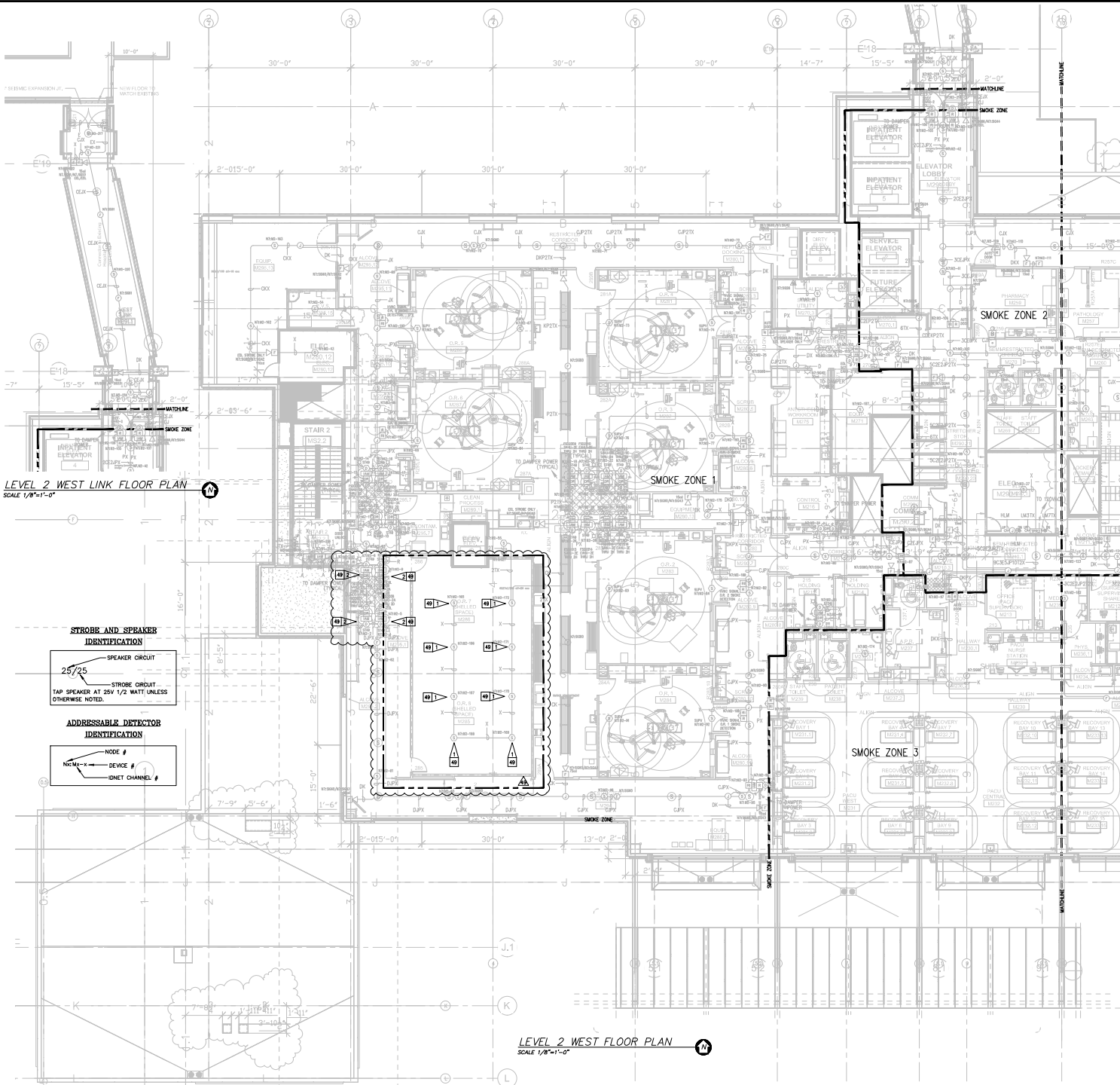


STANDARD SENSOR BASE



REV. NO.		DESCRIPTION	DATE	BY	CHK'D BY	REV. NO.	DESCRIPTION	DATE	BY	CHK'D BY
40	1/28/19	DATE PUBLISH	1/28/19	AP	CM	1	ISSUE	1/28/19	AP	CM
41	8/12/19	DATE PUBLISH	8/12/19	AP	CM	2	ISSUE	8/12/19	AP	CM
42	8/12/19	DATE PUBLISH	8/12/19	AP	CM	3	ISSUE	8/12/19	AP	CM

APPROVED BY: C. McCAMMON
 DRAWN BY: C. McCAMMON
 DATE: 8/12/19
 SPTS / PROJECT NUMBER: 458413141/943123501
 SHEET NUMBER: FA-DET-02



LEVEL 2 WEST LINK FLOOR PLAN
SCALE 1/8"=1'-0"

LEVEL 2 WEST FLOOR PLAN
SCALE 1/8"=1'-0"

Symbol	Description	Part #	Backbox
⊠	Multicore Wall Speaker/Strobe - White	4908-9153	5" sq 2.875" deep w/ end ring, 4" sq adaptor by EC
⊠	Multicore Ceiling Speaker/Strobe - White	4908-9154	5" sq 2.875" deep w/ end ring, 4" sq adaptor by EC
⊠	Multicore Wall Speaker - White	4908-9103	4" sq by EC
⊠	Multicore Ceiling Speaker - White	4908-9102	4" sq by EC
⊠	Wall Speaker - White	4908-8717	5" sq 2.875" deep w/ end ring, 4" sq adaptor by EC
⊠	Ceiling Speaker - White	4908-8721	5" sq 2.875" deep w/ end ring, 4" sq adaptor by EC
⊠	Addressable Manual Station	4908-9005 w/ 811 100 Cover	7" sq 2 1/8" deep w/ end ring by EC
⊠	Addressable Manual Station Suppression	4908-9010 w/ 811 100 Cover	7" sq 2 1/8" deep w/ end ring by EC
⊠	TrailAlert Smoke Sensor	4908-9074 w/ 4908-9792 Base	4" sq by EC
⊠	TrailAlert Heat Sensor	4908-9075 w/ 4908-9792 Base	4" sq by EC
⊠	Heat Detector - 130°F	4908-9792 Base	4" sq by EC
⊠	TrailAlert Duct Sensor	4908-9796	self-contained
⊠	Remote LED w/ test	2088-8006	sq by EC
⊠	Duct Detector Relay	4988-8813	4" sq sq & cover by EC
⊠	Beam Smoke Detector - Transmitter	BEAM1224	Surface Box w/BEAM5BK
⊠	Beam Smoke Detector - Receiver	4988-9101	Surface
⊠	Suppression IBA	4908-9001	4" sq 2 1/8" deep w/ end ring, 4" sq adaptor by EC
⊠	Pressure Switch	By Others	By Others
⊠	Low Air Switch	By Others	By Others
⊠	Tamper Switch	By Others	By Others
⊠	Point Indicator Valve	By Others	By Others
⊠	Cut-Suppression Module	208-10446	By Others
⊠	Pre-Action Solenoid	By Others	By Others
⊠	Door Holders	By Others	Indicated
⊠	Suppression Mech., Disconnect	2088-8000	Indicated
⊠	Relay IBA	4908-9002	4" sq 2 1/8" deep w/ end ring, 4" sq adaptor by EC
⊠	Suppression IBA	2088-9008	self-contained
⊠	FF Lock	2084-9001	sq by EC
⊠	FF Cabinet	2088-8002 w/ (10) 204-4024 handles	23.5"W x 23.5"D x 40"D
⊠	Smoke Control Panel	CEP 4-GA-2P6	41 1/4" x 29 1/4" x 4.75"D
⊠	Suppression Relieving Purge/vent	4908-9006	5.125" x 4.125" w/ 4"D Surface Mount
⊠	Printer	4158-8013	Table Top
⊠	LCD Annunciator	4908-9101	6.625" x 2.875" sq by EC
⊠	Terminal Cabinet	SSU0061	1.74" x 23.5"W x 5.5"D
⊠	Transponder Panel	4100-9001	50 1/4" x 24 1/4" x 0.375"D
⊠	Fire Alarm Control Panel	4100-9114	50 1/4" x 24 1/4" x 0.375"D
⊠	Network Display Panel	4100-9151	29 1/2" x 40 1/2" x 0.375"D
⊠	4076S Pre-Action Panel	4007-9101	16.25" x 13.5" w/ 5.75"D

Letter	Qty	Cable Type	Size	Function
A	2	Black Orange TPA	16	Zone
C	2	Blue/Black THHN	14	Home/Stroke
D	4	Green/Black Blue THHN	14	Home/Stroke Loop
E	2	Brown/Yellow THHN	14	Door Holders
F	2	Change THHN	14	Fan Stroublers
H	1	WspPann D975	15	Serial Communication
J	1	WspPann 981	16	Speaker
L	2	WspPann 981	16	Speaker Loop
N	1	WspPann 223P2	16	Local Network Connection**
M	1	WspPann 223P2	16	Minklec Transponder**
N	2	WspPann 223P2	16	14
N	2	WspPann D975	15	Network Connection
P	2	Red/Black THHN	14	240VDC Power
R	2	Blue/White THHN	16	Remote LED w/ Test
T	2	PA THN	16	16
V	1	WspPann 981	16	Fire Fighter Telephone
X	1	WspPann D977	15	Printer
Y	1	WspPann D975	15	Addressable Data Line

REV 49 GENERAL NOTES:

- EXISTING INFORMATION IS SHOWN LIGHT AND BASED ON INFORMATION PROVIDED BY OTHERS. FIELD VERIFY ALL EXISTING EQUIPMENT AND CONNECTIONS TO RED LINE ANY AND ALL CHANGES AND MARK ON RECORD DRAWING.
- TAP ALL SPEAKERS AT 2% 1/2W UNLESS OTHERWISE NOTED.

REV 49 FLAG NOTES:

⊠ DURING CONSTRUCTION PHASE DEVICES ARE TO BE REPROGRAMMED AS AND SWAPPED FOR HEAT DETECTOR. DETECTOR CAN BE REMOINT MOUNTED DURING WORK ON CEILING UPON COMPLETION OF CONSTRUCTION PHASE REMOVE AND RETURN TO OWNER TO BE RETAINED OR DISPOSED AT THEIR DISCRETION. REMOVE ANY UNNEEDED OR UNDESIRABLE WIRE AND MAINTAIN OVERALL CIRCUIT INTEGRITY.

⊠ FIELD VERIFY LOCATION AND PRE-TEST DUCT DETECTORS TO ENSURE FULL FUNCTIONALITY. REPLACE IF NEEDED.

REV 49 GENERAL NOTES:

- EXISTING INFORMATION IS SHOWN LIGHT AND BASED ON INFORMATION PROVIDED BY OTHERS. FIELD VERIFY ALL EXISTING EQUIPMENT AND CONNECTIONS TO RED LINE ANY AND ALL CHANGES AND MARK ON RECORD DRAWING.
- TAP ALL SPEAKERS AT 2% 1/2W UNLESS OTHERWISE NOTED.

REV 49 FLAG NOTES:

⊠ DURING CONSTRUCTION PHASE DEVICES ARE TO BE REPROGRAMMED AS AND SWAPPED FOR HEAT DETECTOR. DETECTOR CAN BE REMOINT MOUNTED DURING WORK ON CEILING UPON COMPLETION OF CONSTRUCTION PHASE REMOVE AND RETURN TO OWNER TO BE RETAINED OR DISPOSED AT THEIR DISCRETION. REMOVE ANY UNNEEDED OR UNDESIRABLE WIRE AND MAINTAIN OVERALL CIRCUIT INTEGRITY.

⊠ FIELD VERIFY LOCATION AND PRE-TEST DUCT DETECTORS TO ENSURE FULL FUNCTIONALITY. REPLACE IF NEEDED.

Johnson Controls
 9000 Johnson Controls Way
 Seattle, WA 98108
 206-221-1400
 206-221-1410
 206-221-1420

NO.	DATE	REVISION	BY	CHK	APP	DESCRIPTION
46	6/12/09	DAILY PHARMACY RECORD DRAWING	REB	REB	REB	
47	6/12/09	PROGRESS DOORS	REB	REB	REB	
48	6/12/09	WAS PRE-ACTION PANEL UPGRADE	REB	REB	REB	
49	6/12/09	COL. 47 & 8 BUILDOUT	REB	REB	REB	

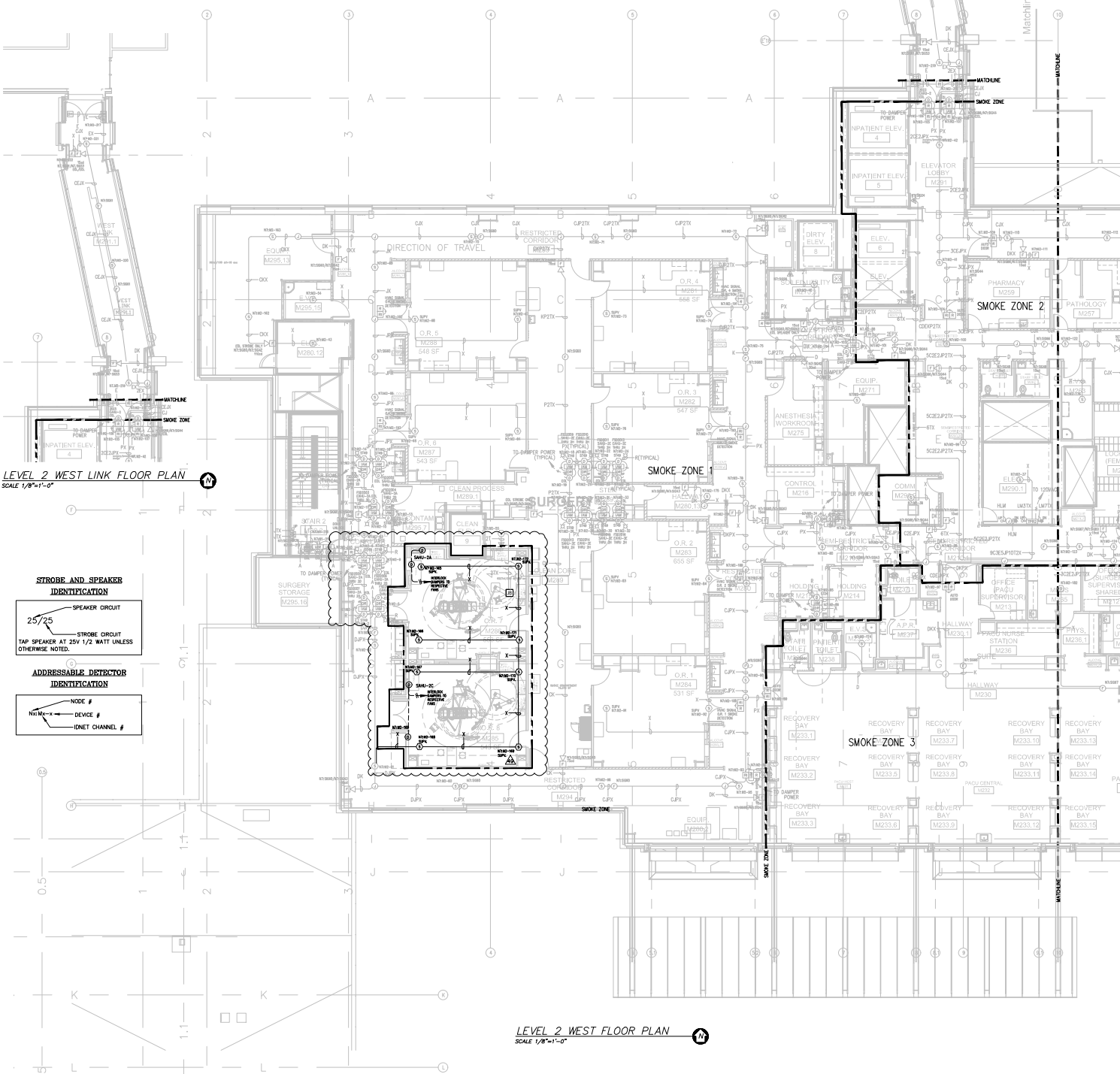
DRAWINGS REVIEWED BY:

REB (6/12/09)
 REB (6/12/09)
 REB (6/12/09)

APPROVED BY:
 C. McCAMMON
 DATE:
 6/12/09

SITE/PROJECT NUMBER:
 458413141/943123501

SHEET NUMBER:
 FA-LEV2-W



LEVEL 2 WEST LINK FLOOR PLAN
SCALE 1/8"=1'-0"

LEVEL 2 WEST FLOOR PLAN
SCALE 1/8"=1'-0"

STROBE AND SPEAKER IDENTIFICATION

25/25 SPEAKER CIRCUIT

STROBE CIRCUIT
TAP SPEAKER AT 25V 1/2 WATT UNLESS OTHERWISE NOTED.

ADDRESSABLE DETECTOR IDENTIFICATION

NODE #

DEVICE #

IDNET CHANNEL #

Symbol	Description	Part #	Backbox
[Symbol]	Multicore Wall Speaker/Strobe - White	4908-913	5" sq 2.875" deep w/ ending 1/2" adaptor by EC
[Symbol]	Multicore Ceiling Speaker/Strobe - White	4908-914	5" sq 2.875" deep w/ ending 1/2" adaptor by EC
[Symbol]	Multicore Wall Speaker - White	4908-910	4" sq by EC
[Symbol]	Multicore Ceiling Speaker - White	4908-912	4" sq by EC
[Symbol]	Wall Speaker - White	4908-871	5" sq 2.875" deep w/ ending 1/2" adaptor by EC
[Symbol]	Ceiling Speaker - White	4908-872	5" sq 2.875" deep w/ ending 1/2" adaptor by EC
[Symbol]	Addressable Manual Station	4908-900	8 1/2" sq 1 1/8" deep w/ sq by EC
[Symbol]	Addressable Manual Station Suppression	4908-901	8 1/2" sq 1 1/8" deep w/ sq by EC
[Symbol]	TriAlarm Smoke Sensor	4908-974	4" sq by EC
[Symbol]	TriAlarm Heat Sensor	4908-975	4" sq by EC
[Symbol]	Heat Detector - 130°F	4908-976	4" sq by EC
[Symbol]	TriAlarm Duct Sensor	4908-978	self-contained
[Symbol]	Remote LED w/1st	2088-806	sq by EC
[Symbol]	Dust Detector Relay	4988-883	1" sq sq & cover by EC
[Symbol]	Beam Smoke Detector - Transmitter	BEAM124	Surface Box w/BEAMBRK
[Symbol]	Beam Smoke Detector - Receiver	4988-911	Surface
[Symbol]	Suppression BSM	4908-901	4" sq 1 1/8" deep w/ sq by EC
[Symbol]	Pressure Switch	By Others	By Others
[Symbol]	Low Air Switch	By Others	By Others
[Symbol]	Tamper Switch	By Others	By Others
[Symbol]	Post Indicator Valve	By Others	By Others
[Symbol]	Coil Suppression Module	208-1046	By Others
[Symbol]	Pre-Action Solenoid	By Others	By Others
[Symbol]	Door Holders	By Others	
[Symbol]	Suppression Mech, Disconnect	2088-800	Indicated
[Symbol]	Relay BVM	4908-902	4" sq 2 1/8" deep w/ sq by EC
[Symbol]	Remote Relay	2088-800	self-contained
[Symbol]	FF Lock	208-801	sq by EC
[Symbol]	FF Cabinet	208-802	23.5" x 23.5" w x 4.0"D
[Symbol]	Smoke Control Panel	110-2044/624 Handsets CF 4.0/4.0/2.6	41" x 29" x 4.75"D Surface Mount
[Symbol]	Suppression Relieving Purgifier	4908-906	5.125" x 4.125" w x 4.0" D Surface Mount
[Symbol]	Printer	119-8013	Table Top
[Symbol]	LCD Annunciator	4908-911	8.5" sq 2.5" deep by EC
[Symbol]	Terminal Cabinet	SSU0061	1.74" x 23.5" w x 5.5" D
[Symbol]	Transceiver Panel	4100-801	5.6" x 2.4" w x 3.75" D
[Symbol]	Fire Alarm Control Panel	4100-214	20" x 14" w x 4.375" D 29.5" x 4.2"
[Symbol]	Network Display Unit	4100-4151	20" x 14" w x 4.375" D 29.5" x 4.2"
[Symbol]	40765 Pre-Action Panel	4007-4101	16.25" x 13.5" w x 1.75" D

Letter	Qty	Color/Type	Size	Function
A	2	Black/Orange TFN	18	Zone
C	2	Red/Black TFN	14	Periscope
D	4	(2) Red/2) Blue TRH	14	Periscope Loop
E	2	Blow/Yellow TRH	14	Door Holders
F	2	Orange TRH	14	Fire Shutoffs
H	1	WirePerm D975	18	Serial Communication
K	2	Red/Black TRH	14	Speaker Loop
J	1	WirePerm 991	16	Speaker
L	1	WirePerm 991	16	Speaker Loop
M	1	WirePerm 522PZ	16	Local Network Connection**
N	1	WirePerm 522PZ	16	Mirrored Transponder**
L	1	WirePerm 522PZ	16	Local Network Connection**
N	2	WirePerm D975	18	Network Connection
P	2	Red/Black TRH	14	2000D Power
R	2	Blue/Yellow TFN	16	Remote LED w/1st
U	1	WirePerm 991	16	Fire Fighter Telephone
V	1	WirePerm D975	18	Printer
X	1	WirePerm D975	18	Addressable Data Line

49 GENERAL NOTES:

- EXISTING INFORMATION IS SHOWN LIGHT AND BASED ON INFORMATION PROVIDED BY OTHERS. FIELD VERIFY ALL EXISTING EQUIPMENT AND CONNECTIONS TO THE RED LINE ANY AND ALL CHANGES AND MARK ON RECORD DRAWING.
- TAP ALL SPEAKERS AT 25V 1/2W. FIELD VERIFY

49 FLAG NOTES:

[Symbol] DURING CONSTRUCTION PHASE DEVICES ARE TO BE REPROGRAMMED AS AND SAMPLED FOR RELIABLE DETECTORS. DETECTORS CAN BE PENALTY MOUNTED DURING WORK ON CEILING. UPON COMPLETION OF CONSTRUCTION PHASE REMOVE AND RETURN TO OWNER TO BE RE-TESTED OR DISPOSED OF AT THEIR DISCRETION. REMOVE OR DISPOSE OF UNNECESSARY WIRE. MAINTAIN OVERALL CIRCUIT INTEGRITY.

[Symbol] FIELD VERIFY LOCATION AND PRE-TEST DUCT DETECTORS TO ENSURE FULL FUNCTIONALITY. REPLACE IF NEEDED.

Johnson Controls
SCOTT, WA 98108, Phone: 206-291-1100
200-291-1100
200-291-1100

NO.	DATE	REVISION DESCRIPTION	DESIGNED BY	CHECKED BY	INCHES	FOOTING	NO.	DATE	REVISION DESCRIPTION	DESIGNED BY	CHECKED BY
1	8/12/09	DATE PHARMACY RECORD DRAWING	REC	REC			47	8/12/09	PHASE DOORS	JAR	JAR
2	8/12/09	PHASE DOORS	JAR	JAR			48	8/12/09	PHASE DOORS	JAR	JAR
3	8/12/09	PHASE DOORS	JAR	JAR			49	8/12/09	PHASE DOORS	JAR	JAR

DRAWINGS REVIEWED BY:

REV 1: 8/12/09
REV 2: 8/12/09
REV 3: 8/12/09

FIRE ALARM SYSTEM
LEVEL 2 WEST FLOOR PLAN
GOOD SAMARITAN - PATIENT CARE TOWER

401 10TH AVENUE, SE
FOUNDRY, WA 98071

APPROVED BY:
C. McCAMMON

DRAWN BY:
C. McCAMMON

DATE:
8/12/09

SITE/PROJECT NUMBER:
456413141/943123501

HEET NUMBER:
FA-LEV2-W