

SCOPE OF WORK

THE FIRE ALARM CONTROL PANEL IS AN OUTDATED SILENT KNIGHT 5820XL THAT IS BEING REPLACED WITH A 6820. BOTH ANNUNCIATORS ARE BEING RELOCATED FROM EXTERIOR TO INTERIOR LOCATIONS. INSTALL TELGUARD COMMUNICATOR, DESIGNED IN ACCORDANCE WITH:
 NFPA 72 2019
 NEC 2020
 IBC 2018

INSTALLATION NOTES:

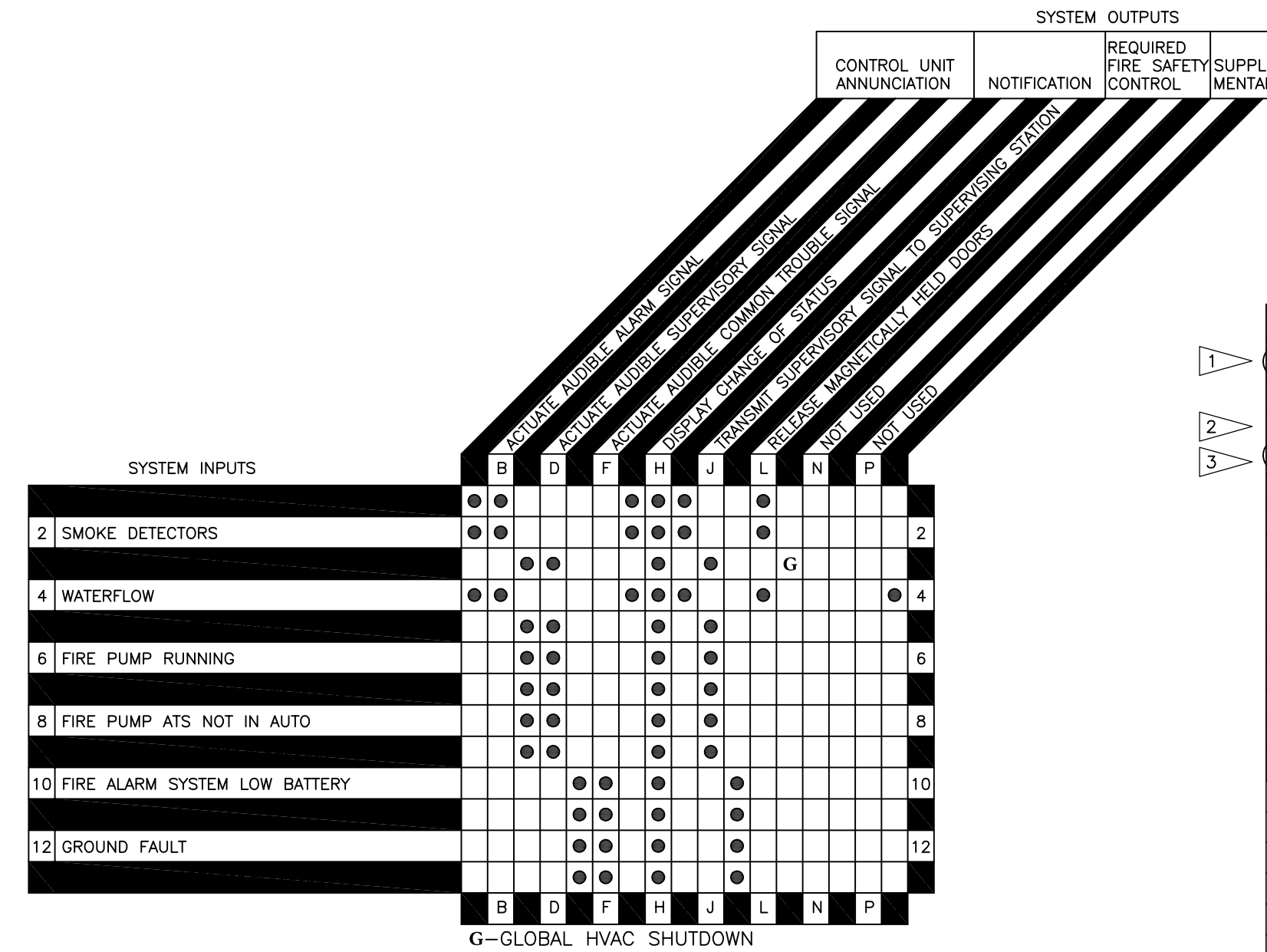
- 1) PRIOR TO CALLING FOR INSPECTION, THE INSTALLER SHALL PROVIDE DOCUMENTATION TO THE LOCAL AHJ STATING THAT THE SYSTEM HAS BEEN INSTALLED, TESTED, EVALUATED AND CONFIRMED TO BE IN ACCORDANCE WITH ALL GOVERNING CODES AND THE APPROVED PLANS. THE FIRE ALARM INSTALLER SYSTEM INSTALLER SHALL COMPLETE AN NFPA 72 RECORD OF COMPLETION (NFPA 72 10.18.2.1). THE RECORD OF COMPLETION SHALL BE PROVIDED TO THE AHJ INSPECTOR AT THE TIME OF THE INSPECTION (NFPA 72 10.18.2.1.2.4).
- 2) INSTRUCTIONS FOR OPERATING, TESTING, AND MAINTENANCE OF THE SYSTEM ALONG WITH RECORD DRAWINGS OTHERWISE REFERRED TO "AS-BUILTS" AND EQUIPMENT SPECIFICATIONS SHALL BE PROVIDED AT AN APPROVED LOCATION.
- 3) ALL SYSTEMS AND DEVICES SHALL BE INSTALLED AND TESTED PER THE MANUFACTURE'S LISTING AND THE AUTHORITY HAVE JURISDICTION (NFPA 72 10.14.2.1). LABEL ALL DEVICE LOCATIONS.
- 4) FACP AND ALL REMOTE POWER SUPPLIES REQUIRE A DEDICATED 120VAV - 20AMP CIRCUIT. A NOTICE PLACED IN THE FACP SHALL DIRECT PERSONNEL TO THE LOCATION OF THE ELECTRICAL PANEL THAT IS SUPPLYING DEDICATED POWER TO THE SYSTEM (NFPA 72 10.5.5.1). THE DEDICATED CIRCUIT BREAKER THAT SERVES THE FIRE ALARM SYSTEM SHALL BE LABELED AND SECURED AGAINST TAMPERING WITH A RED BREAKER LOCKOUT.
- 5) WALL MOUNTED STROBES SHALL BE PLACED 80" MINIMUM TO 96" MAXIMUM ABOVE FLOOR LEVEL (NFPA 72 18.5.4.1 & 2). WALL MOUNTED STROBES SHALL BE SIZED IN ACCORDANCE WITH (NFPA 72 TABLE 18.5.4.3.1(A)). CEILING MOUNTED STROBES SHALL BE PLACED AND SIZED IN ACCORDANCE WITH (NFPA 72 TABLE 18.5.4.3.1(B)).
- 6) WHEN MORE THAN TWO NOTIFICATION APPLIANCES ARE VISIBLE AT THE SAME TIME IN THE SAME ROOM OR ADJACENT SPACE OR THE FIELD OF VIEW THE FLASH OF THE STROBES SHALL BE SYNCHRONIZED (NFPA 72 18.5.4.3. (3) AND (4)).
- 7) PULL STATIONS SHALL BE PLACED BETWEEN 42 AND 48 INCHES ABOVE FLOOR LEVEL. DEVICES SHALL BE RED IN COLOR (ICC A117.1 309 AND NFPA 72 17.14.5).
- 8) CENTER SMOKE DETECTORS IN CORRIDORS WITH CEILING LIGHTING AND THE FA STROBES. SMOKE DETECTORS IN CORRIDORS ARE TO BE SPACED PER NFPA 72 17.6.3.1 (H) AND 17.7.3.2.4.2 (4).
- 9) SMOKE DETECTORS USED FOR ELEVATOR RECALL SHALL BE INSTALLED WITHIN 21' OF THE ELEVATOR DOOR CENTERLINE (NFPA 72 21.3.5).
- 10) SMOKE DETECTORS USED FOR DOOR RELEASE SHALL BE INSTALLED WITHIN 5' OF THE DOOR ON THE CENTERLINE OF THE DOORWAY (NFPA 72 17.7.5.6.6.1).
- 11) AUDIBILITY REQUIREMENTS: A SOUND LEVEL OF 75dba or 15dba OVER AMBIENT SHALL BE REACHED IN ALL AREAS PROVIDED WITH FIRE ALARM DEVICES PER SPECIFICATION AND NFPA-72.
- 12) SET STROBE CANDELA OUTPUT AS SHOWN ON PLANS. SET HORN TO MED SETTING.
- 13) OUTDOOR STROBES REQUIRED FOR APPROACHING EMERGENCY VEHICLES TO BE LOCATED ON THE BUILDING AT A SERVICEABLE HEIGHT, AND TO BE CLEARLY VISIBLE FROM THE EMERGENCY VEHICLE APPROACH PATH.
- 14) FIRE ALARM CIRCUITS TO BE INSTALLED, SECURED, AND TERMINATED IN ACCORDANCE WITH NEC, NFPA 72, AND LOCAL AHJ REQUIREMENTS AND STANDARDS.
- 15) NOTIFY E-SQUARED SYSTEMS OF ANY DESIGN QUESTIONS OR CHANGES PRIOR TO INSTALLATION OR FABRICATION. COMPARE DRAWINGS WITH CURRENT CONTRACT DRAWINGS PRIOR TO INSTALLATION.
- 16) ANY ALTERATIONS OR VARIATIONS FROM THE DRAWINGS SHOULD BE APPROVED PRIOR TO PROCEEDING AND DOCUMENTED ON THE AS-BUILT DRAWINGS. VERIFY DEVICE LOCATIONS PRIOR TO INSTALLATION.
- 17) REFERENCE FACTORY INSTRUCTION MANUALS CURING INSTALLATION OF FIRE CONTROL EQUIPMENT.
- 18) DETECTORS SHALL NOT BE MOUNTED IN A DIRECT AIR STREAM. DO NOT INSTALL DETECTORS WITH IN 3'-0" OF AIR DIFFUSERS.
- 19) US ONLY U.L. LISTED DEVICES.
- 20) DO NOT INSTALL DETECTOR HEADS UNTIL FINAL CLEANING HAS BEEN PERFORMED.
- 21) FIELD DETERMINE INTERFACE REQUIREMENTS AND LOCATIONS OF EQUIPMENT SUPPLIED BY OTHER TRADES. (I.E. SPRINKLER DEVICES, HVAC UNITS, FIRE DAMPERS, ELEVATOR CONTROLS, & FAN CONTROLS.)
- 22) NOTIFY E-SQUARED A MIN. OF 1 WEEK PRIOR TO THE INSTALLATION OF ALL WIRING, DEVICES, AND POWER, FOR SCHEDULING OF SYSTEM CHECK OUT AND PROGRAMMING. E-SQUARED REQUIRES A MIN. OF 2 DAYS ON SITE FOR CHECKS PRIOR TO SCHEDULING A FIRE ALARM FINAL. LARGER SYSTEMS WILL REQUIRE MORE TIME. FAILURE TO HAVE WORK COMPLETED WILL REQUIRE RESCHEDULING AND ADDITIONAL COSTS.

ELECTRICAL NOTES:

- 1) INSTALLATION SHALL COMPLY WITH NFPA 70, PARTICULARLY ARTICLE 760, AND SHALL ALSO COMPLY WITH NFPA 72, AND ALL LOCAL ELECTRICAL CODES AND LOCAL JURISDICTION REQUIREMENTS.
- 2) CONDUIT INDICATED ON PRINTS IS DIAGRAMMATIC AND MAY BE REROUTED PER FIELD REQUIREMENTS.
- 3) AC POWER SHALL NOT OCCUPY THE SAME CONDUIT AS FIRE PROTECTION CIRCUITS (MOST FIRE DETECTION CKT'S ARE NEC CLASS 3)
- 4) ALL SLC LOOP WIRING SHALL BE MINIMUM 2 CONDUCTOR #16, UNSHIELDED, LOW/MID CAPACITANCE FIRE ALARM CABLE OF THE PROPER RISER AND/OR PLENUM TYPE. SEE WIRE LEGEND FOR PROJECT SPECIFIC TYPE/GAUGE.
- 5) CONVENTIONAL FIRE DETECTION INITIATING DEVICE CIRCUITS OR NOTIFICATION APPLIANCE CIRCUITS SHALL NOT BE PARALLEL BRANCHED (TEE TAPPED) TO ENSURE SUPERVISION OF WIRING. ADDRESSABLE CLASS "A" FIRE DETECTION SIGNALING LINE CIRCUITS (SLC) SHALL NOT BE PARALLEL BRANCHED (TEE TAPPED) TO ENSURE SUPERVISION OF WIRING.
- 6) OBSERVE POLARITY OF ALL FIRE DETECTION WIRING. POLARITY SHALL BE MAINTAINED THROUGHOUT ENTIRE SYSTEM; WIRE SHALL BE MARKED AND IDENTIFIED WHERE SPLICED, AND AT ANY JUNCTION BOXES.
- 7) THE FIRE ALARM PANEL GROUND SHALL BE A SEPARATE CONTINUOUS GROUND WIRE BACK TO THE SOURCE GROUND; CONDUIT GROUND IS NOT ACCEPTABLE PER MANUFACTURER'S SPECIFICATIONS.
- 8) ALL FIELD WIRING SHALL BE CHECKED FOR SHORTS, GROUNDS, & PROPER END OF LINE RESISTOR (ELR) VALUES BEFORE SCHEDULING E-SQUARED FOR SYSTEM CHECK OUT. DOCUMENT CIRCUIT READINGS AND PRESENT TO E-SQUARED TECHNICIAN UPON INITIAL ARRIVAL ON SITE. PROVIDE E-SQUARED A MIN. OF 1 WEEK NOTICE PRIOR TO CHECK OUT.
- 9) FIRE ALARM PANEL, AND ANY OTHER FIRE DETECTION EQUIPMENT REQUIRING 120VAC, SHALL BE SUPPLIED BY A DEDICATED CIRCUIT BREAKER OTHER (NON-FIRE DETECTION) EQUIPMENT SHALL NOT SHARE THE FIRE ALARM CIRCUIT(S). THIS BREAKER SHALL BE PROVIDED WITH A BREAKER LOCK-OUT FOR ALL FIRE ALARM EQUIPMENT AND MARKED "FIRE ALARM CIRCUIT CONTROL". 120VAC POWER BY OTHERS.
- 10) POWER SHALL NOT BE APPLIED TO THE FIRE ALARM PANEL UNLESS A REPRESENTATIVE FROM E-SQUARED IS PRESENT.
- 11) WIRE NUTS ARE NOT ALLOWED. ALL SPLICES ARE TO BE TERMINATED ON TERMINAL STRIPS. (APPLICABLE TO MILITARY INSTALLATIONS ONLY)
- 12) ALL SLC, NOTIFICATION, AND SPEAKER WIRING SHALL BE STYLE 6 (CLASS A). NO OUTPUT CIRCUITS, FROM FCP, OR RETURN CIRCUITS SHALL BE RUN IN THE SAME CONDUIT. VERTICAL SEPARATION OF CONDUITS SHALL BE AT LEAST 1 FOOT AND HORIZONTAL SEPARATION SHALL BE AT LEAST 4 FEET.
- 13) ELECTRICAL FINAL SHALL BE COMPLETED PRIOR TO SCHEDULING E-SQUARED FOR CHECK-OUT, UNLESS REQUIRED OTHERWISE BY AHJ.

LOWES 3511 5TH STREET SE PUYALLUP, WA 98374 FIRE ALARM SYSTEM

DESIGNER OF RECORD:
 SANDIFER DEER
 NICET IV (FAS)
 #129796



BILL OF MATERIALS (BOM)

ITEM	SYM	QTY	MODEL NUMBER	DESCRIPTION	MANUFACTURER	MOUNTING
1	[FACP]	1	6820	ADDRESSABLE FIRE ALARM PANEL, EXISTING	SILENT KNIGHT	SURFACE MOUNT TOP AT 6'-0"
2		2	5815XL	127 SD DEVICE SLC LOOP EXPANDER, EXISTING	SILENT KNIGHT	SURFACE MOUNT TOP AT 6'-0"
3	[ANN]	2	6860	REMOTE ANNUNCIATOR FOR FACP EXISTING	SILENT KNIGHT	SURFACE MOUNT AT 5'-0"
4	[CELL]	1	TC-7FS-LTE-V	FIRE ALARM CELLULAR COMMUNICATOR	TELGUARD	SURFACE MOUNT
5	[NAC]	8	FPR-RNAC-8A-4C	NAC POWER SUPPLY, BAMPS, EXISTING	BOSCH	SURFACE MOUNT
6	[DSPS]	1	AL600ULX	DUCT SMOKE DETECTOR POWER SUPPLY, EXISTING	ALTRONIX	SURFACE MOUNT
7		20	SD500-PS	PULL-STATION, ADDRESSABLE, EXISTING	SILENT KNIGHT	4" SQ 1.5" DEEP W/S.G. MUDRING
8		6	BG-12LOB	PULL-STATION, WEATHERPROOF, CONV., EXISTING	FIRE-LITE	4" SQ 1.5" DEEP W/S.G. MUDRING
9		169	SD505-APS	SMOKE DETECTOR, EXISTING	SILENT KNIGHT	ON BASE
10	[RB]	7	SD505-6RB	ADDRESSABLE RELAY BASE, EXISTING	SILENT KNIGHT	4" SQ 1.5" DEEP W/S.G. MUDRING
11	[RA]	9	RA100Z	REMOTE ANN. FOR SMK. ABV. CEILING, EXISTING	SYSTEM SENSOR	4" SQ 1.5" DEEP W/S.G. MUDRING
12		19	D4120	DUCT DETECTOR, EXISTING	SYSTEM SENSOR	SURFACE MOUNT
13	[RTS]	19	RTS-151	REMOTE TEST SWITCH, EXISTING	SYSTEM SENSOR	4" SQ 1.5" DEEP W/S.G. MUDRING
14	[CR]	21	SD500-ARM	ADDRESSABLE CONTROL RELAY, EXISTING	SILENT KNIGHT	4" SQ 1.5" DEEP W/S.G. MUDRING
15	[IM]	59	SD500-AIM/MIM	MONITOR & MINI INPUT MODULE, EXISTING	SILENT KNIGHT	4" SQ 1.5" DEEP W/S.G. MUDRING
16	[IM]	1	SD500-LIM	ISOLATOR MODULE, EXISTING	SILENT KNIGHT	4" SQ 1.5" DEEP W/S.G. MUDRING
17	[BT]	1	BEAM1224	BEAM TRANSMITTER, EXISTING	SYSTEM SENSOR	4" SQ 1.5" DEEP W/S.G. MUDRING
18	[BR]	1	BEAM1224	BEAM RECEIVER, EXISTING	SYSTEM SENSOR	4" SQ 1.5" DEEP W/S.G. MUDRING
19		7	WATERFLOW DET.	SPRINKLER FLOW SWITCH, EXISTING	VARIOUS	PROVIDED BY OTHERS
20		17	TAMPER DET.	SPRINKLER TAMPER SWITCH, EXISTING	VARIOUS	PROVIDED BY OTHERS
21		2	PRESSURE DET.	SPRINKLER PRESSURE SWITCH, EXISTING	VARIOUS	PROVIDED BY OTHERS
22						

MOUNT MANUAL PULL STATIONS SO ACTUATION LEVER IS AT +48" ABOVE FINISHED FLOOR.
 MOUNT HORN/STROBES AND STROBES WITH BOTTOM OF STROBE AT +80" ABOVE FINISHED FLOOR.
 ENTIRE LENS MUST BE BETWEEN 80" & 96" AND NO LESS THAN 6" BELOW CLC.
 MOUNT ALL PANELS WITH TOP AT 6'-0" AFF. SET STROBE CANDELA OUTPUT AS SHOWN ON PLANS.
 SET INTERIOR HORNS TO LOW SETTING, EXTERIOR HORNS TO HIGH SETTING.

WP: Denotes Weather Proof Devices

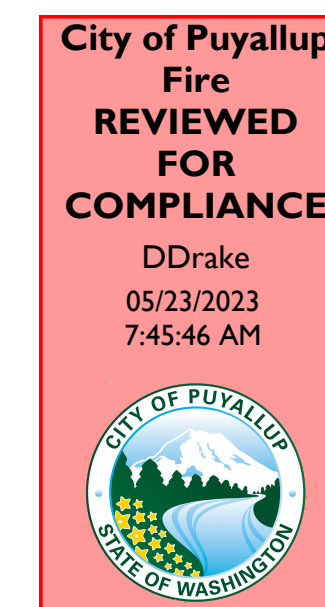
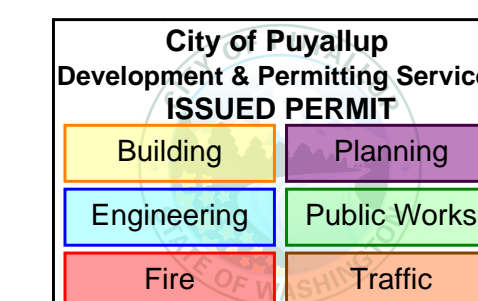
FLAG NOTES:

1. 5820XL FACP REPLACED WITH 6820 FACP
2. ANNUNCIATOR BEING MOVED FROM EXTERIOR TO INTERIOR
3. ADDED NEW TELGUARD CELL COMMUNICATOR

CABLE/CONDUCTOR LIST

	CIRCUIT TYPE	CABLE TYPE	NO.	GAUGE	COLOR
1	ADDRESSABLE CIRCUIT	FPLP	A(1,2,3,...)	16/2	RED JACKET
2	NOTIFICATION APPLIANCE CIRCUIT	FPLP	N(1,2,3,...)	14/2	RED JACKET
3	CONVENTIONAL/INTERFACE CIRCUIT	FPLP	B	16/2	RED JACKET
4	24VDC POWER	FPLP	C	16/2	RED JACKET
5	ANNUNCIATOR CIRCUIT	FPLP	J	14/2	RED JACKET
		THHN		14/1	GREEN
6	SNAC PANEL AUX POWER CIRCUIT	FPLP	P(1,2,3,...)	16/2	RED JACKET
7	BOOSTER POWER SUPPLY TRIGGER CIRCUIT	FPLP	T(1,2,3,...)	14/2	RED JACKET
8	FACP NETWORK NODE CABLE AQUASEAL AQC 226	U.G.	D	14/2	BLACK JACKET
9	TELEPHONE CABLE CONNECTION	CAT 5	P	22/8	BLUE JACKET
10					

ALL CABLES SHOULD BE 16-14AWG SOLID, MID CAPACITANCE, PLENUM AS SHOWN(EXCEPT U.G.), NON-SHIELDED. ALL CONDUITS SHOULD BE 3/4" MINIMUM/OR AS REQUIRED BY NEC 70 UNLESS OTHERWISE NOTED ON PLANS. INDOOR CABLE REPRESENTS WINDI CITY WIRE PART NUMBERS. UNDERGROUND (U.G.) CABLE REPRESENTS WEST PENN PART NUMBER.



City of Puyallup
 Fire
 REVIEWED
 FOR
 COMPLIANCE
 DDrake
 05/23/2023
 7:45:46 AM

THE APPROVED CONSTRUCTION PLANS AND ALL ENGINEERING MUST BE POSTED ON THE JOB AT ALL INSPECTIONS IN A VISIBLE AND READILY ACCESSIBLE LOCATION.

Approval of submitted plans is not an approval of omissions or oversight by this office or noncompliance with any applicable regulations of local government. The contractor is responsible for making sure that the building complies with all applicable building codes and regulations of the local government.

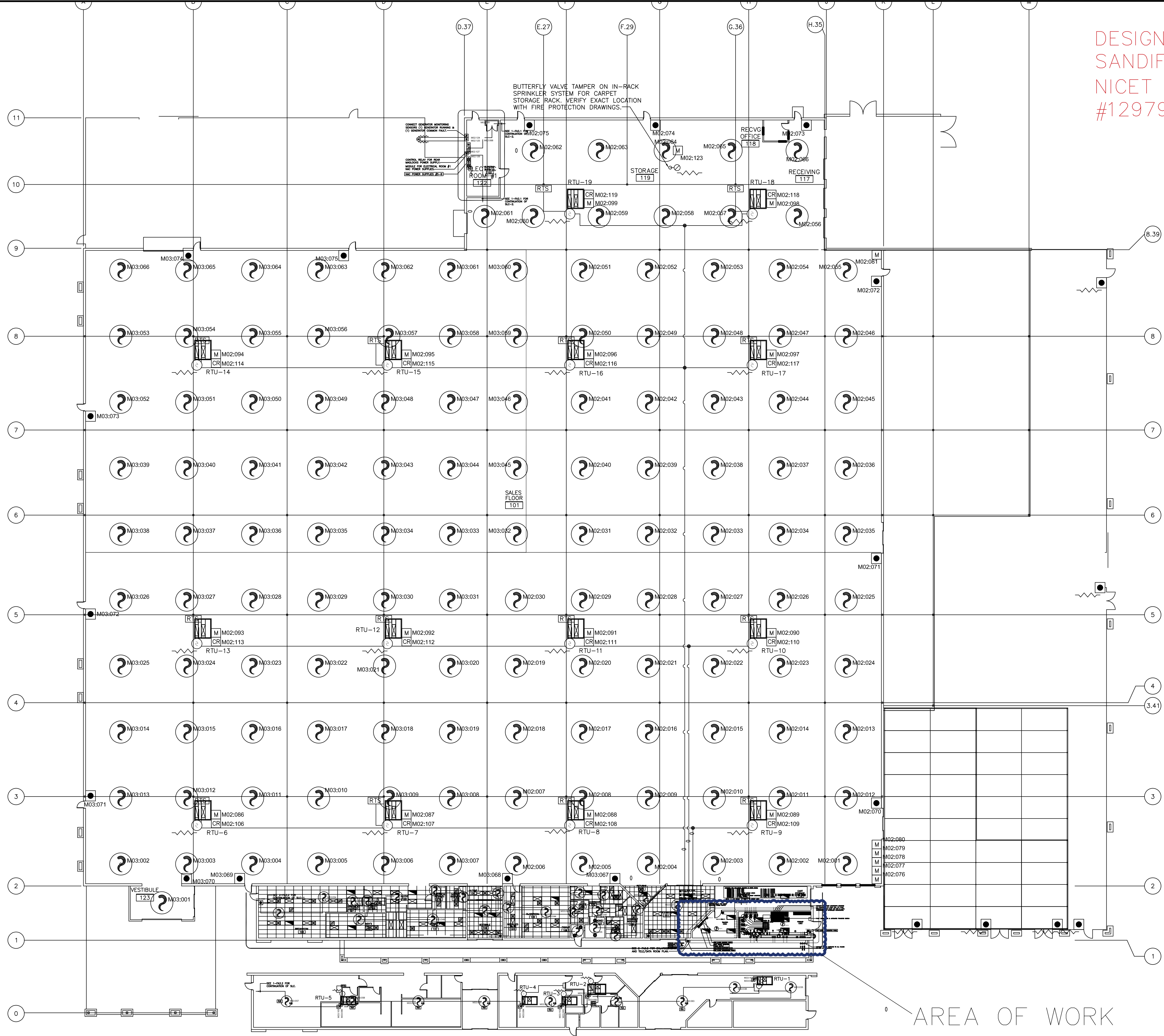
REV.	DATE	ISSUED FOR APPROVAL	ISSUE COMMENTS
0	4-19-23		

SCALE: 1/8"=1'-0"
 FIRE/LIFE SAFETY SYSTEM
 COVER SHEET

LOWES OF PUYALLUP
 FIRE ALARM SYSTEM
 3511 5TH ST SE
 PUYALLUP, WA, 98374

DISPATCH #1363

FA-01



DESIGNER OF RECORD:
SANDIFER DEER
NICET IV (FAS)
#129796

REV	DATE	BY	ISSUE COMMENTS
0	4-19-23	MMH	ISSUED FOR APPROVAL

SCALE: 1/8"=1'-0"
FIRE/LIFE SAFETY SYSTEM
EXISTING FLOOR PLAN

**LOWES OF PUYALLUP
FIRE ALARM SYSTEM**
3511 5TH ST SE
PUYALLUP, WA, 98374

DISPATCH #1363

FA-02

City of Puyallup
Development & Permitting Services
ISSUED PERMIT

Building	Planning
Engineering	Public Works
Fire	Traffic

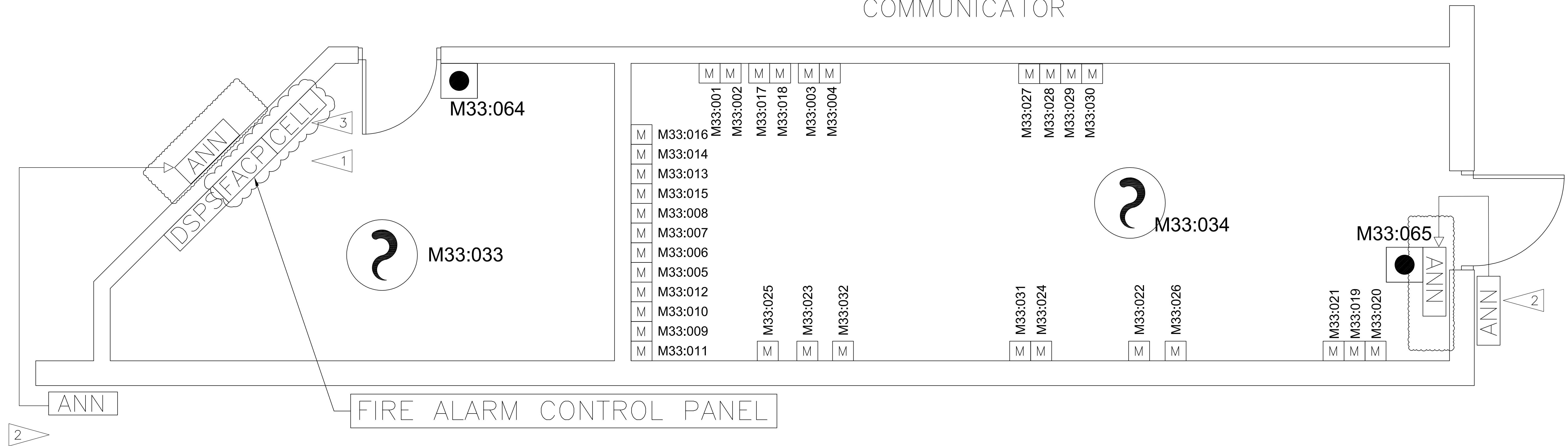
DESIGNER OF RECORD:
SANDIFER DEER
NICET IV (FAS)
#129796

E² Systems
E-SQUARED SYSTEMS, LLC
PO BOX 731227 PUYALLUP, WA 98373
PH: 253.284.3707 FAX: 253.284.3714

SPRINKLER ROOM

FLAG NOTES:

1. 5820XL FACP REPLACED WITH 6820 FACP
2. ANNUNCIATOR(S) MOVED FROM EXTERIOR TO INTERIOR
3. ADDED NEW TELGUARD CELL COMMUNICATOR



M	M33:016	M	M33:001	M	M33:027	M	M33:031	M	M33:021	M	M33:021
M	M33:014	M	M33:002	M	M33:028	M	M33:024	M	M33:019	M	M33:019
M	M33:013	M	M33:017	M	M33:029	M	M33:022	M	M33:020	M	M33:020
M	M33:015	M	M33:018	M	M33:030	M	M33:026	M	M33:026	M	M33:026
M	M33:008	M	M33:003	M	M33:004	M	M33:025	M	M33:025	M	M33:025
M	M33:007	M	M33:006	M	M33:005	M	M33:023	M	M33:023	M	M33:023
M	M33:006	M	M33:005	M	M33:012	M	M33:024	M	M33:024	M	M33:024
M	M33:012	M	M33:025	M	M33:010	M	M33:022	M	M33:022	M	M33:022
M	M33:010	M	M33:023	M	M33:009	M	M33:026	M	M33:026	M	M33:026
M	M33:009	M	M33:032	M	M33:011	M	M33:021	M	M33:021	M	M33:021
M	M33:011	M	M33:032	M	M33:011	M	M33:021	M	M33:021	M	M33:021

City of Puyallup
Development & Permitting Services
ISSUED PERMIT
Building Planning
Engineering Public Works
Fire Traffic

REV	DATE	BY	ISSUED FOR APPROVAL	ISSUE COMMENTS
0	4-19-23	MAH		

SCALE: 1/8"=1'-0"
FIRE/LIFE SAFETY SYSTEM
SPRINKLER ROOM

LOWES OF PUYALLUP
FIRE ALARM SYSTEM
3511 5TH ST SE
PUYALLUP, WA, 98374

DISPATCH #1363

FA-03