

**City of Puyallup
Fire
REVIEWED
FOR
COMPLIANCE**

DDrake
06/12/2023
2:19:35 PM



GOOD SAMARITAN HOSPITAL

D.R. #7 & #8 BUILDOUT

Fire Alarm and Detection System

Equipment Supplied By



City of Puyallup Development & Permitting Services ISSUED PERMIT	
Building	Planning
Engineering	Public Works
Fire	Traffic

THE APPROVED CONSTRUCTION PLANS AND ALL ENGINEERING MUST BE POSTED ON THE JOB AT ALL INSPECTIONS IN A VISIBLE AND READILY ACCESSIBLE LOCATION.

Approval of submitted plans is not an approval of omissions or oversight by this office or noncompliance with any applicable regulations of local government. The contractor is responsible for making sure that the building complies with all applicable building codes and regulations of the local government.

Project Team Contact Information

Sales Representative

Tim Duggan
timothy.duggan@jc.com
Phone: 253-509-8816

Project Coordinator

Bryan Reimer
bryan.reimer@jc.com
Phone: 206-777-4933

Technician Scheduler

Yvonne Thompson
yvonne.thompson@jc.com
Phone: 206-777-4860

Project Designer

Eric Beck
eric.beck@jc.com
Phone: 206-777-4821
NICET Fire Alarm System Level III, #148077

NO.	DATE	REVISION DESCRIPTION	ISSUED BY	PROJECT #
46	1/25/19	DAILY PRODUCTION RECORD DRAWING	REC	1901000000
47	8/7/22	PROGRESS DOORS	ELP	600101145
48	4/19/23	ADD FIRE-ACTION PANEL (TOWER)	JRS	600101145
49	6/7/23	D.R. #7 & 8 BUILDOUT	MM	60050574

SHEET NAME	DRAWING NAME	ELECTRONIC DRAWING NAME	INCLUDED IN THIS PROJECT
FA-COV-01	TITLE SHEET	FA-COVER	X
FA-COV-02	COVER SHEET	FA-COVER	X
FA-COV-02.1	COVER SHEET	FA-COVER	X
FA-COV-03	COVER SHEET	FA-COVER	X
FA-COV-04	COVER SHEET	FA-COVER	
FA-COV-05	COVER SHEET	FA-COVER	
FA-COV-06	PANEL LAYOUT	FA-COVER	
FA-COV-07	PANEL LAYOUT	FA-COVER	
FA-COV-08	PANEL LAYOUT	FA-COVER	
FA-COV-09	SUP. PANEL LAYOUT	FA-COVER	
FA-RIS-01	RISER SHEET	FA-RISER	
FA-RIS-02	RISER SHEET	FA-RISER	
FA-DET-01	DETAIL SHEET	FA-COVER	
FA-DET-02	DETAIL SHEET(T.L.)	FA-COVER	X
FA-SCP-01	SMOKE CONTROL PANEL	FA-SCP-01	
FA-LEVA-W	LEVEL A WEST FLOOR PLAN	FA-LEVEL A	
FA-LEVA-E	LEVEL A EAST FLOOR PLAN	FA-LEVEL A	
FA-LEV1-W	LEVEL 1 WEST FLOOR PLAN	FA-LEVEL 1	
FA-LEV1-E	LEVEL 1 EAST FLOOR PLAN	FA-LEVEL 1	
FA-LEV2-WD	LEVEL 2 WEST DEMO FLOOR PLAN	FA-LEVEL 2-D	X
FA-LEV2-W	LEVEL 2 WEST FLOOR PLAN	FA-LEVEL 2	X
FA-LEV2-E	LEVEL 2 EAST FLOOR PLAN	FA-LEVEL 2	
FA-LEV3-W	LEVEL 3 WEST FLOOR PLAN	FA-LEVEL 3	
FA-LEV3-E	LEVEL 3 EAST FLOOR PLAN	FA-LEVEL 3	
FA-LEV4-W	LEVEL 4 WEST FLOOR PLAN	FA-LEVEL 4	
FA-LEV4-E	LEVEL 4 EAST FLOOR PLAN	FA-LEVEL 4	
FA-LEV5-W	LEVEL 5 WEST FLOOR PLAN	FA-LEVEL 5	
FA-LEV5-E	LEVEL 5 EAST FLOOR PLAN	FA-LEVEL 5	
FA-LEV6-W	LEVEL 6 WEST FLOOR PLAN	FA-LEVEL 6	
FA-LEV6-E	LEVEL 6 EAST FLOOR PLAN	FA-LEVEL 6	
FA-LEV7-W	LEVEL 7 WEST FLOOR PLAN	FA-LEVEL 7	
FA-LEV7-E	LEVEL 7 EAST FLOOR PLAN	FA-LEVEL 7	
FA-LEV8-W	LEVEL 8 WEST FLOOR PLAN	FA-LEVEL 8	
FA-LEV8-E	LEVEL 8 EAST FLOOR PLAN	FA-LEVEL 8	
FA-ROOF-W	ROOF WEST FLOOR PLAN	FA-ROOF	
FA-ROOF-E	ROOF EAST FLOOR PLAN	FA-ROOF	

Johnson Controls
SOLUTIONS
10000 1st Avenue SW
Foster, WA 98071
PH: 206-777-4800
FAX: 206-777-4801
© 1992, 2007 Johnson Controls

**FIRE ALARM SYSTEM
TITLE SHEET
GOOD SAMARITAN - PATIENT CARE TOWER**

401 10TH AVENUE SW
FOSTER, WA 98071

APPROVED BY:
C. McCAMMON

DRAWN BY:
C. McCAMMON

DATE:
6/12/09

SHEET/PROJECT NUMBER:
458413141/943123501

SHEET NUMBER:
FA-COV-01

Sequence of Operation	Sequence of Operation																									
	Manual Station	Smoke Detection	Supervisory Smoke Detection*	Beam Smoke Detection	Corridor Smoke Detection	Anesthetizing Area Smoke Detection	IDF Room Smoke Detection	Primary Recall/Elevator Lobbies Smoke Detection	Elev Lobbies Except Primary Recall Smoke Detection	Elevator Mach Rm/Shaft Smoke Detection	Elevator Power Monitor	Duct Smoke Detection Supply Air Handler	Duct Smoke Detection Exhaust Air Handler	Duct Smoke Detection Supply Smoke/Fire Damper	Duct Smoke Detection Exhaust Smoke/Fire Damper	Heat Detection	Clean Agent System Control Panel	Flow Switch	Pressure Switch	High/Low Air Switch	Tamper Switch	Fire Pump	System Trouble	Pre-Action Alarm	Pre-Action Supervisory	Pre-Action Trouble
Activation of Local Alarm at FACP (LCD Display & Audible Indication)	X	X		X	X		X	X	X	X						X	X	X	X					X		
Activation of Local Alarm at Annunciator	X	X		X	X		X	X	X	X						X	X	X	X					X		
Activate Visible Devices Alarm Floor	X	X		X	X		X	X	X	X						X	X	X	X					X		
Activate Audible Devices Alarm Floor/Floor Above/Floor Below	X	X		X	X		X	X	X	X						X	X	X	X					X		
Release Door Holders Within Smoke Zone	X	X		X	X		X	X	X	X						X	X	X	X					X		
Release Door Holders Floor of Alarm	X																							X		
Release Elevator Door Smoke Curtains Local Detection Only		X		X	X		X										X							X		
Release Stair Door Locks Floor of Alarm	X	X		X	X		X	X	X	X						X	X	X	X					X		
Close Corridor Smoke/Fire Dampers Within Smoke Zone					X																					
Close Smoke/Fire Dampers at Duct Det.														X	X											
Maintain Smoke/Fire Dampers in Anesthetizing Area Ducts in Open Position														X	X											
Shutdown AHU and SAHU Supply Fan											X															
Shutdown EAHU Exhaust Fan												X														
Send Signal to DDC for Shutdown of Associated AHU, SAHU and EAHU Fans											X	X	X	X												
Send Signal to DDC System					X		X				X	X	X	X		X										
Send Signal to DDC System For Smoke Removal Mode																										
Activate Stair Pressurization Fans	X	X		X	X		X	X	X						X	X	X							X		
Open Elevator Hoistway Vent Dampers							X	X	X																	
Initiate Primary Elevator Recall							X	X	X																	
Initiate Alternate Elevator Recall							X																			
Activate Elevator Hat Light									X																	
Transmit Alarm Signal To Central Station Monitor	X	X		X	X		X	X	X	X					X	X	X	X						X		
Trouble Indication at FACP																										
Trouble Indication at Annunciator																								X		X
Transmit Trouble Signal To Central Station Monitor																							X			X
Supv Indication at Annunciator			X		X						X	X	X	X	X					X	X	X		X		X
Transmit Supv Signal To Central Station Monitor			X		X						X	X	X	X	X					X	X	X		X		X

*NOTE: OPERATING ROOM FANS WILL OPERATE INDEPENDENTLY OF OTHERS IN SMOKE CONTROL ZONE, ONLY SHUTTING DOWN AFTER SMOKE IS DETECTED IN OPERATING ROOM.

City of Puyallup
Development & Permitting Services
ISSUED PERMIT

Building	Planning
Engineering	Public Works
Fire	Traffic

Johnson Controls
9000 N. 148th St., Everett, WA 98203
TEL: 425.345.7000 FAX: 425.345.7001
WWW.JOHNCONTROLS.COM

PROJECT #
458413141/943123501

ISSUED BY
C. McCAMMON

DATE
8/12/09

SHEET/PROJECT NUMBER
458413141/943123501

SHEET NUMBER
FA-COV-02.1

APPROVED BY
C. McCAMMON

DRAWN BY
C. McCAMMON

PROJECT DESCRIPTION
PATIENT CARE TOWER

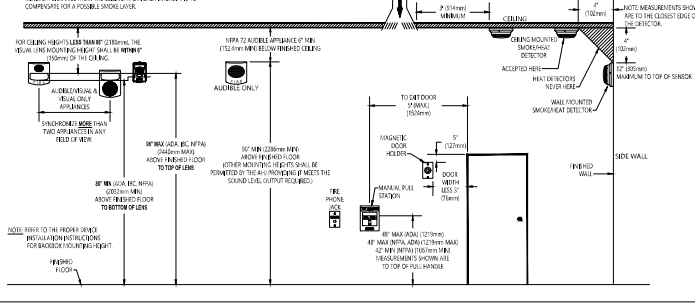
DATE
8/12/09

REVISIONS

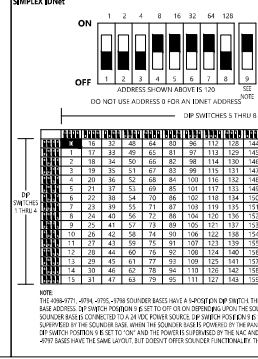
NO.	DATE	DESCRIPTION
1	1/25/09	ISSUED PERMIT
2	9/29/09	ISSUED PERMIT
3	9/29/09	ISSUED PERMIT
4	9/29/09	ISSUED PERMIT
5	9/29/09	ISSUED PERMIT

DEVICE MOUNTING HEIGHT REFERENCE FOR NPA 72

1. INITIAL APPROVALS INCLUDING HEIGHT CONFORMANCE SHALL BE OBTAINED FROM THE LOCAL AUTHORITY BEFORE INSTALLATION.
2. THE HEIGHT OF THE DEVICE SHALL BE MEASURED FROM THE BOTTOM OF THE DEVICE TO THE CENTER OF THE DETECTOR ELEMENT.



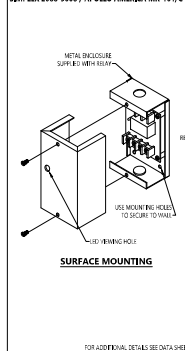
DIP SWITCH SETTINGS - INITIATING



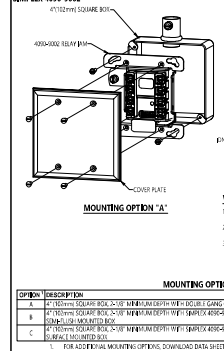
END OF LINE RESISTOR CODES

MODEL	REF. NUMBER	D	BASE NUMBER	WATTAGE	CIRCUIT TYPE	FIRE ALARM PANEL/MODULE
400-0000	170493	124	010	1/2	RES	400-0000000000
400-0000	170493	124	010	1/2	RES	400-0000000000
400-0000	170493	124	010	1/2	RES	400-0000000000
400-0000	170493	124	010	1/2	RES	400-0000000000

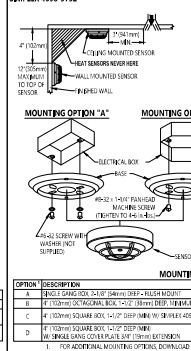
SPDT CONTROL RELAY



ADDRESSABLE RELAY MODULE



STANDARD SENSOR BASE



Johnson Controls
 9000 N. Meridian, Suite 100
 Scottsdale, AZ 85258
 480.440.2200
 800.440.2200
 202-291-1410
 FAX 202-291-1410

NO.	DATE	REVISION DESCRIPTION	DRAWN BY		CHECKED BY		APPROVED BY	
			DATE	BY	DATE	BY	DATE	BY
40	8/12/09	DAILY MAINTENANCE	DD	DD	DD	DD	DD	DD
41	8/12/09	WALL MOUNTING HEIGHT	DD	DD	DD	DD	DD	DD
42	8/12/09	REVISIONS	DD	DD	DD	DD	DD	DD
43	8/12/09	REVISIONS	DD	DD	DD	DD	DD	DD
44	8/12/09	REVISIONS	DD	DD	DD	DD	DD	DD

DRAWINGS REVIEWED BY:
 [Signature]
 [Name]

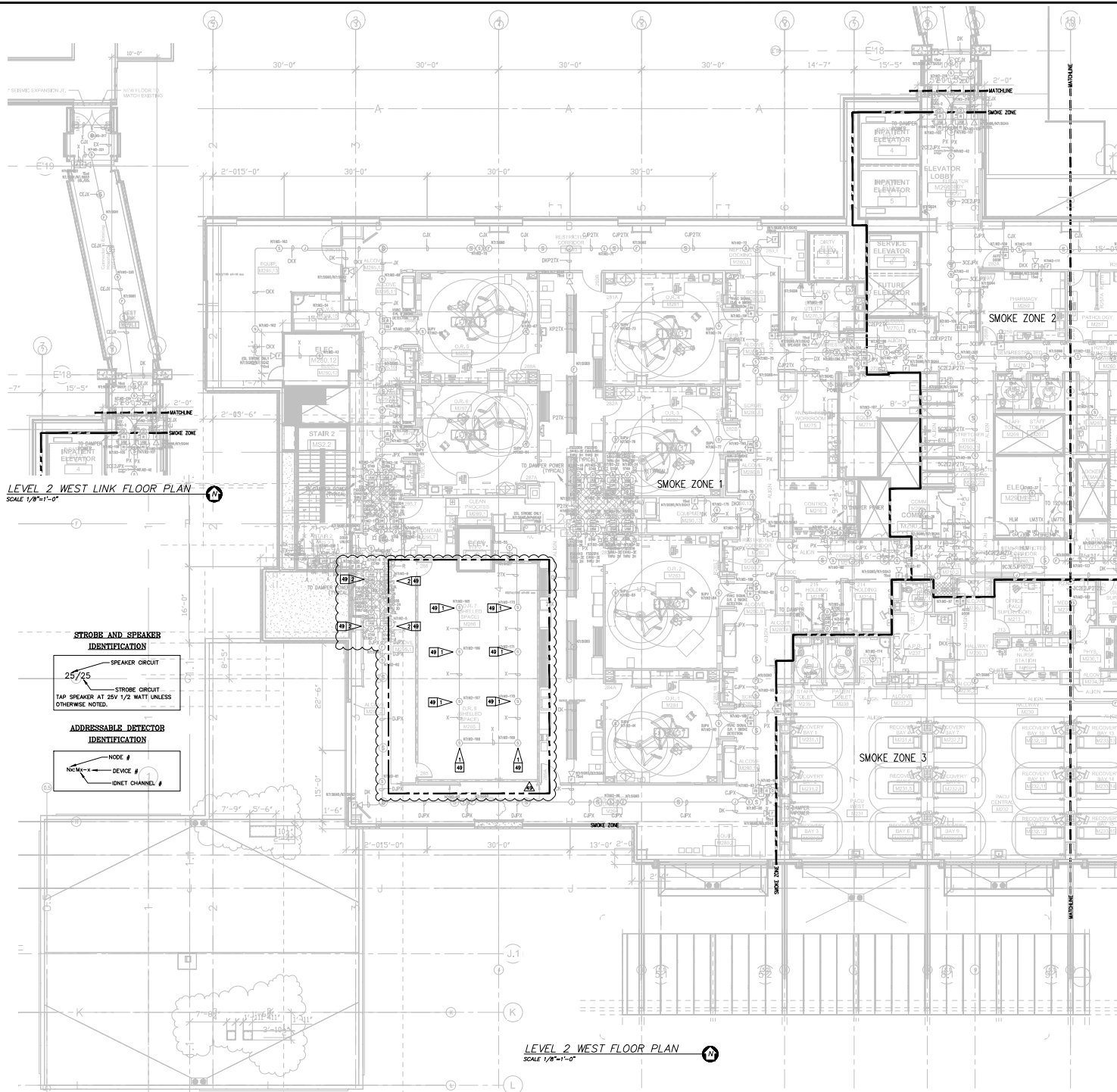
**FIRE ALARM SYSTEM
 DETAIL SHEET (T.I.)
 GOOD SAMARITAN - PATIENT CARE TOWER**

401 10TH AVENUE NW
 FOUNTAIN, VA 24071

APPROVED BY:
 C. McCAMMON
 DATE:
 8/12/09
 SPTS/PROJECT NUMBER:
 458413141/943123501
 SHEET NUMBER:
 FA-DET-02

City of Puyallup
 Development & Permitting Services
ISSUED PERMIT

Building	Planning
Engineering	Public Works
Fire	Traffic



Symbol	Description	Part #	Backbox
[Symbol]	Multicore Wall Speaker/Strobe - White	4906-9153	5\" 2.5A7F\" deep w/ ending 1/2\" adaptor by EC
[Symbol]	Multicore Ceiling Speaker/Strobe - White	4906-9154	5\" 2.5A7F\" deep w/ ending 1/2\" adaptor by EC
[Symbol]	Multicore Wall Speaker - White	4906-9103	5\" 2.5A7F\" deep w/ ending 1/2\" adaptor by EC
[Symbol]	Multicore Ceiling Speaker - White	4906-9102	5\" 2.5A7F\" deep w/ ending 1/2\" adaptor by EC
[Symbol]	Multicore Wall Speaker - White	4906-9117	5\" 2.5A7F\" deep w/ ending 1/2\" adaptor by EC
[Symbol]	Multicore Ceiling Speaker - White	4906-9121	5\" 2.5A7F\" deep w/ ending 1/2\" adaptor by EC
[Symbol]	Addressable Manual Station	4906-9005 w/ 911 100 Cover	2\" x 2 1/8\" deep w/ ending by EC
[Symbol]	Addressable Manual Station Suppression	4906-9010 w/ 911 100 Cover	2\" x 2 1/8\" deep w/ ending by EC
[Symbol]	TrailAlarm Smoke Sensor	4906-9074 w/ 4906-9070 Base	4\" 2\" x 1\" deep w/ ending by EC
[Symbol]	TrailAlarm Heat Sensor	4906-9073 w/ 4906-9070 Base	4\" 2\" x 1\" deep w/ ending by EC
[Symbol]	TrailAlarm Smoke Sensor	4906-9074 w/ 4906-9070 Base	4\" 2\" x 1\" deep w/ ending by EC
[Symbol]	TrailAlarm Heat Sensor	4906-9073 w/ 4906-9070 Base	4\" 2\" x 1\" deep w/ ending by EC
[Symbol]	TrailAlarm Heat Sensor	4906-9073 w/ 4906-9070 Base	4\" 2\" x 1\" deep w/ ending by EC
[Symbol]	TrailAlarm Heat Sensor	4906-9073 w/ 4906-9070 Base	4\" 2\" x 1\" deep w/ ending by EC
[Symbol]	TrailAlarm Heat Sensor	4906-9073 w/ 4906-9070 Base	4\" 2\" x 1\" deep w/ ending by EC
[Symbol]	TrailAlarm Heat Sensor	4906-9073 w/ 4906-9070 Base	4\" 2\" x 1\" deep w/ ending by EC
[Symbol]	TrailAlarm Heat Sensor	4906-9073 w/ 4906-9070 Base	4\" 2\" x 1\" deep w/ ending by EC
[Symbol]	TrailAlarm Heat Sensor	4906-9073 w/ 4906-9070 Base	4\" 2\" x 1\" deep w/ ending by EC
[Symbol]	TrailAlarm Heat Sensor	4906-9073 w/ 4906-9070 Base	4\" 2\" x 1\" deep w/ ending by EC
[Symbol]	TrailAlarm Heat Sensor	4906-9073 w/ 4906-9070 Base	4\" 2\" x 1\" deep w/ ending by EC
[Symbol]	TrailAlarm Heat Sensor	4906-9073 w/ 4906-9070 Base	4\" 2\" x 1\" deep w/ ending by EC
[Symbol]	TrailAlarm Heat Sensor	4906-9073 w/ 4906-9070 Base	4\" 2\" x 1\" deep w/ ending by EC
[Symbol]	TrailAlarm Heat Sensor	4906-9073 w/ 4906-9070 Base	4\" 2\" x 1\" deep w/ ending by EC



REV.	DATE	BY	REVISION	
			DESCRIPTION	DATE
1	1/25/19	DA	PHARMACY	RECORD DRAWINGS
2	4/10/19	DA	PHARMACY	RECORD DRAWINGS
3	7/17/19	DA	PHARMACY	RECORD DRAWINGS
4	8/7/19	DA	PHARMACY	RECORD DRAWINGS

REV.	DATE	BY	DESCRIPTION
1	1/25/19	DA	PHARMACY
2	4/10/19	DA	PHARMACY
3	7/17/19	DA	PHARMACY
4	8/7/19	DA	PHARMACY

STROBE AND SPEAKER IDENTIFICATION

25/25

SPEAKER CIRCUIT

STROBE CIRCUIT

TAP SPEAKER AT 25V 1/2 WATT UNLESS OTHERWISE NOTED.

ADDRESSABLE DETECTOR IDENTIFICATION

NODE #

DEVICE #

IDNET CHANNEL #

Letter	Qty	Color/Type	Size	Function
A	2	Black/Orange TPA	14	Zone
B	2	Red/Blue TPA	14	Home/Breeze
C	4	Q1 (Red/2) Blue TPA	14	Home/Breeze Loop
D	2	Brown/Yellow TPA	14	Door Holders
E	2	Orange TPA	14	Fan Strouctures
H	1	WasPain D075	15	Serial Communication
J	1	WasPain 91	19	Speaker
L	2	WasPain 91	19	Speaker Loop
L	1	WasPain S2B2F	19	Local Network Connection**
L	1	WasPain S2B2F	19	Minitek Transponder**
L	1	WasPain S2B2F	19	Minitek Transponder**
L	1	WasPain S2B2F	19	Minitek Transponder**
N	2	WasPain D075	15	Network Connection
P	2	Red/Pink TPA	14	24VDC Power
R	2	Black/White TPA	15	Remote LED w/ Test
T	2	PA TPA	19	PA
V	1	WasPain 91	19	Fire Fighter Telephone
T	1	WasPain D077	15	Priener
X	1	WasPain D075	15	Addressable Data Line

REV 49 GENERAL NOTES:

- EXISTING INFORMATION IS SHOWN LIGHT AND BASED ON INFORMATION PROVIDED BY OTHER FIELD VERIFY ALL EXISTING EQUIPMENT AND CONNECTIONS TO BE TO RED LINE ANY AND ALL CHANGES AND MARK ON RECORD DRAWINGS
- TAP FULL SPEAKERS AT 25V 1/2W UNLESS OTHERWISE NOTED.

REV 49 FLAG NOTES:

[Symbol] DURING CONSTRUCTION PHASE DEVICES ARE TO BE REPROGRAMMED AS AND SWAPPED FOR HEAT DETECTOR DETECTORS CAN BE REMOVED MOUNTED DURING WORK ON CEILING UPON COMPLETION OF CONSTRUCTION PHASE REMOVE AND RETURN TO OWNER TO BE RETAINED OR DISPOSED AT THEIR DISCRETION. REMOVE ANY UNNEEDED OR UNNECESSARY WIRE AND MAINTAIN OVERALL CIRCUIT INTEGRITY.

[Symbol] FIELD VERIFY LOCATION AND PRE-TEST DUCT DETECTORS TO ENSURE FULL FUNCTIONALITY. REPLACE IF NEEDED.

LEVEL 2 WEST FLOOR PLAN SCALE 1/8\"/>

FIRE ALARM SYSTEM

LEVEL 2 WEST FLOOR PLAN

GOOD SAMARITAN - PATIENT CARE TOWER

401 10TH AVENUE SE
FOUNDAIR, WA 98101

APPROVED BY:
C. McCAMMON

DRAWN BY:
C. McCAMMON

DATE:
8/12/09

SFR/PROJECT NUMBER:
458413141/943123501

PERMIT NUMBER:
FA-LEV2-W

City of Puyallup Development & Permitting Services ISSUED PERMIT

Building Planning Engineering Public Works Fire Traffic

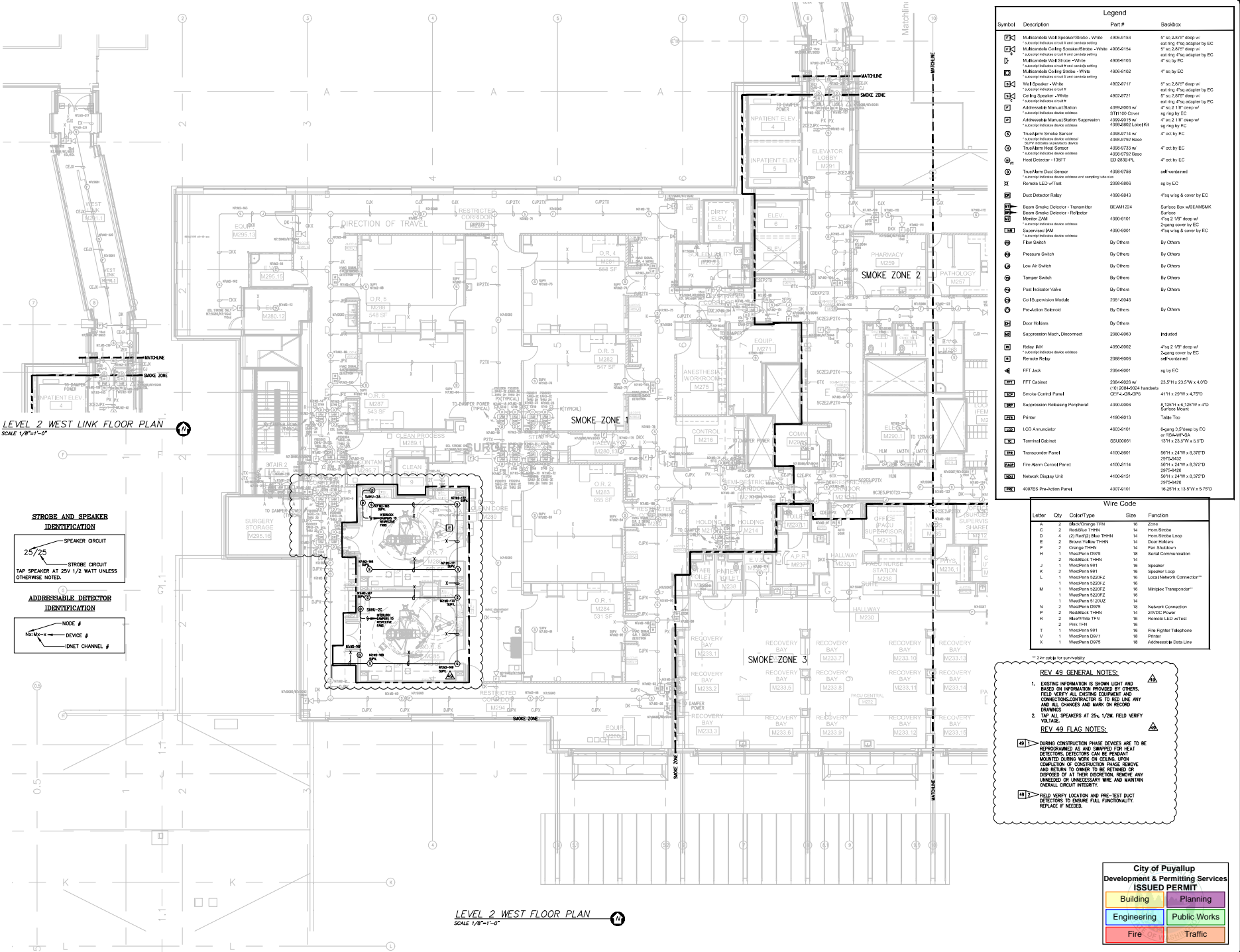
LEVEL 2 WEST LINK FLOOR PLAN
SCALE 1/8"=1'-0"

STROBE AND SPEAKER IDENTIFICATION

25/25 SPEAKER CIRCUIT
STROBE CIRCUIT
TAP SPEAKER AT 25V 1/2 WATT UNLESS OTHERWISE NOTED.

ADDRESSABLE DETECTOR IDENTIFICATION

NODE #
DEVICE #
IDNET CHANNEL #



Symbol	Description	Part #	Backbox
[Symbol]	Multicore Wall Speaker/Strobe - White	4908-9153	5" sq 2.875" deep w/ ending 1/2" adapter by EC
[Symbol]	Multicore Ceiling Speaker/Strobe - White	4908-9154	5" sq 2.875" deep w/ ending 1/2" adapter by EC
[Symbol]	Multicore Wall Speaker - White	4908-9103	4" sq by EC
[Symbol]	Multicore Ceiling Speaker - White	4908-9102	4" sq by EC
[Symbol]	Wall Speaker - White	4908-8717	5" sq 2.875" deep w/ ending 1/2" adapter by EC
[Symbol]	Ceiling Speaker - White	4908-8721	5" sq 2.875" deep w/ ending 1/2" adapter by EC
[Symbol]	Addressable Manual Station	4999-9000 w/ 8111100 Cover	7" sq 2 1/8" deep w/ sq by EC
[Symbol]	Addressable Manual Station Suppression	4999-9010 w/ 4999-9010-0100 Line Kit	7" sq 2 1/8" deep w/ sq by EC
[Symbol]	TrailAlarm Smoke Sensor	4908-9714 w/ 4908-9792 Base	4" sq by EC
[Symbol]	TrailAlarm Heat Sensor	4908-9715 w/ 4908-9792 Base	4" sq by EC
[Symbol]	Heat Detector - 130°F	4908-9792 Base	4" sq by EC
[Symbol]	TrailAlarm Duct Sensor	4908-9796	self-contained
[Symbol]	Remote LED w/1st	2098-8806	sq by EC
[Symbol]	Dust Detector Relay	4998-8813	1" sq sq by EC
[Symbol]	Beam Smoke Detector - Transmitter	BEAM1224	Surface Box w/BEAM58AK
[Symbol]	Beam Smoke Detector - Receiver	4998-9191	Surface
[Symbol]	Suppression BSM	4908-9001	4" sq 2 1/8" deep w/ 4" sq sq by EC
[Symbol]	Pressure Switch	By Others	By Others
[Symbol]	Low Air Switch	By Others	By Others
[Symbol]	Tamper Switch	By Others	By Others
[Symbol]	Post Indicator Valve	By Others	By Others
[Symbol]	Coil/Suppression Module	209-1046	By Others
[Symbol]	Pre-Action Solenoid	By Others	By Others
[Symbol]	Door Holders	By Others	
[Symbol]	Suppression Mech./Disconnect	2098-8800	Indicated
[Symbol]	Relay BSM	4908-9002	4" sq 2 1/8" deep w/ 4" sq sq by EC
[Symbol]	Remote Relay	2098-8800	self-contained
[Symbol]	FFI Lock	2098-8001	sq by EC
[Symbol]	FFI Cabinet	2098-8002 w/ 1102044024 hardware	23.57H x 23.57W x 4.07D
[Symbol]	Smoke Control Panel	CEP 4-GRA-GR-6	41H x 29W x 4.75D
[Symbol]	Suppression Relieving Purgifier	4908-9006	5.125H x 1.325W x 9.5D
[Symbol]	Printer	4198-8013	Table Top
[Symbol]	LCD Annunciator	4908-9191	Bejing 3.5" deep by EC
[Symbol]	Terminal Cabinet	SSU0061	1.74 x 23.57W x 5.5D
[Symbol]	Transponder Panel	4198-9061	5.67H x 2.47W x 0.375D
[Symbol]	Fire Alarm Control Panel	4198-9114	20.7H x 24.7W x 8.375D
[Symbol]	Network Display Unit	4198-9151	20.7H x 24.7W x 8.375D
[Symbol]	40763 Pre-Action Panel	4007-9101	16.25H x 15.57W x 1.75D

Letter	Qty	Color/Type	Size	Function
A	2	Black/Orange TFN	18	Zone
C	2	Red/Black TFN	14	Periscope
D	4	(2) Red/2) Blue TTH	14	Periscope Loop
E	2	Blue/Yellow TTH	14	Door Holders
F	2	Orange TTH	14	Fire Shutoffs
H	1	White/Perm D975	18	Serial Communication
K	2	Red/Black TTH	14	Speaker
J	1	White/Perm 991	16	Speaker
L	1	White/Perm 991	16	Speaker Loop
M	1	White/Perm 922PZ	16	Local Network Connection**
N	1	White/Perm 922PZ	16	Mirrored Transponder**
L	1	White/Perm 922PZ	16	Speaker
P	2	White/Perm 922PZ	14	2000D Power
N	2	White/Perm D975	18	Network Connection
P	2	Red/Black TTH	14	2000D Power
R	2	Blue/Yellow TFN	16	Remote LED w/1st
P	1	FFI TTN	16	FFI
T	1	White/Perm 991	16	Fire Fighter Telephone
V	1	White/Perm D975	18	Printer
X	1	White/Perm D975	18	Addressable Data Line

REVISIONS:

1. EXISTING INFORMATION IS SHOWN LIGHT AND BASED ON INFORMATION PROVIDED BY OTHERS. FIELD VERIFY ALL EXISTING EQUIPMENT AND CONNECTIONS TO BE RED LINED ANY AND ALL CHANGES AND MARK ON RECORD DRAWING.

2. TAP ALL SPEAKERS AT 25V 1/2W. FIELD VERIFY

REV 49 FLAG NOTES:

[Symbol] DURING CONSTRUCTION PHASE DEVICES ARE TO BE REPROGRAMMED AS AND SAMPLED FOR GREAT DETECTORS. DETECTORS CAN BE REPROGRAMMED DURING WORK ON CEILING. UPON COMPLETION OF CONSTRUCTION PHASE REMOVE AND RETURN TO OWNER TO BE RE-TESTED OR DISPOSED OF AT THEIR DISCRETION. REMOVE OR DISPOSE OF UNNECESSARY WIRE MAINTAIN OVERALL CIRCUIT INTEGRITY.

[Symbol] FIELD VERIFY LOCATION AND PRE-TEST DUCT DETECTORS TO ENSURE FULL FUNCTIONALITY. REPLACE IF NEEDED.

LEVEL 2 WEST FLOOR PLAN
SCALE 1/8"=1'-0"

City of Puyallup
Development & Permitting Services
ISSUED PERMIT

Building	Planning
Engineering	Public Works
Fire	Traffic

Johnson Controls
300 South 10th Street, Suite 100
Seattle, WA 98108
206-291-1400
206-291-1400

DATE	BY	DESCRIPTION
8/12/19	DAVE PHARMACY	RECORD DRAWING
8/12/19	DAVE PHARMACY	RECORD DOORS
8/12/19	DAVE PHARMACY	PANEL UPGRADE

DRAWINGS REVIEWED BY:

NO.	DATE	BY	DESCRIPTION
46	8/12/19	DAVE PHARMACY	RECORD DRAWING
47	8/12/19	DAVE PHARMACY	RECORD DOORS
48	8/12/19	DAVE PHARMACY	PANEL UPGRADE

FA-LEVEL 2

FIRE ALARM SYSTEM

LEVEL 2 WEST FLOOR PLAN

GOOD SAMARITAN - PATIENT CARE TOWER

401 10TH AVENUE NW
FOUNDRY, WA 98017

APPROVED BY:
C. McCAMMON

DRAWN BY:
C. McCAMMON

DATE:
8/12/19

SPR/PROJECT NUMBER:
458413141/943123501

DRAWING NUMBER:
FA-LEVEL 2-W