

SCOPE OF WORK

- TENANT IMPROVEMENT FIRE SPRINKLER WORK TO ADD NEW COVERAGE IN NEW MODULAR ROOMS, SPRAY BOOTHS, AND LASER DUST COLLECTOR. EXISTING OVERHEAD SYSTEMS TO REMAIN.

DESIGN CRITERIA:

- OFFICE SPACES & CONTROL ROOMS LIGHT HAZARD OCCUPANCY - HYDRAULICALLY CALCULATED TO PROVIDE A DENSITY OF .10/900 SQ. FT. AREA REDUCED BY 40% PER NFPA 13 11.2.3.2.3
- DETAILED ASSEMBLY ORDINARY HAZARD GROUP 2 OCCUPANCY - HYDRAULICALLY CALCULATED TO PROVIDE A DENSITY OF .20/900 SQ. FT. AREA REDUCED BY 40% PER NFPA 13 11.2.3.2.3

PRFS20230711

City of Puyallup
Fire
REVIEWED FOR COMPLIANCE

Ray C
06/22/2023
11:27:41 AM



Approval of submitted plans is not an approval of omissions or oversight by this office or noncompliance with any applicable regulations of local government. The contractor is responsible for making sure that the building complies with all applicable building codes and regulations of the local government.

THE APPROVED CONSTRUCTION PLANS AND ALL ENGINEERING MUST BE POSTED ON THE JOB AT ALL INSPECTIONS IN A VISIBLE AND READILY ACCESSIBLE LOCATION.

Subject to engineer report revised June 13, 2023.
Installation in accordance with applicable codes and standards.

FLOW TEST

STATIC 55 PSI
RESIDUAL 45 PSI
FLOW 1,182 GPM
LOCATION EAST MAIN

City of Puyallup
Development & Permitting Services
ISSUED PERMIT

| | |
|-------------|--------------|
| Building | Planning |
| Engineering | Public Works |
| Fire | Traffic |

HANGER LEGEND

| | |
|---|---------------------|
| A | "U" HOOK |
| B | COACH SCREW ROD |
| D | BM. CLAMP W/ "STRAP |
| E | EYELET |
| F | FLUSH SHELL |
| G | CEILING FLANGE |
| H | SIDE BEAM BRACKET |
| K | SHORT CLIP |
| M | ALL THREAD ROD |
| N | TOGGLE NUT |
| P | POWDER DRIVEN STUD |
| R | SAMMY XPRESS |
| S | PIPE SPIKE |
| T | |
| U | |
| V | |
| W | |
| X | |
| Y | |
| Z | |

APPROVAL REQUIRED

PIERCE COUNTY

| |
|--|
| |
| |
| |
| |
| |
| |
| |

TEMP RATING

| | | | | | | | | | |
|-----|-----|-----|-----|-----|-----|-----|-----|-----|-----|
| 100 | 150 | 200 | 225 | 250 | 300 | 350 | 400 | 480 | 540 |
|-----|-----|-----|-----|-----|-----|-----|-----|-----|-----|

FITTING LEGEND

| | |
|-----|------------------------|
| PO | PIPE-OLET |
| SN | GROOVED SHAPED NIPPLE |
| TSN | THREADED SHAPED NIPPLE |
| ACM | ADJUSTABLE DROP NIPPLE |
| FLG | FLANGE |
| RC | REDUCING COUPLING |
| | |
| | |
| | |

STATE CERTIFICATION

WASHINGTON STATE
FIRE PROTECTION ENGINEERING
Patriot Fire Protection, Inc.
PATRIOT FIRE PROTECTION, INC.
06/22/2023
RAY C
11:27:41 AM

SPRINKLER LEGEND

| | | | | | | | | | | | | |
|--|--|--|--|--|--|--|--|--|--|--|--|--|
| | | | | | | | | | | | | |
| | | | | | | | | | | | | |
| | | | | | | | | | | | | |

SPRINKLER HEAD LEGEND

| | | | | | | | | | | | |
|----|--------|-------|----|------|------|--------|---|------|----------|------|-----|
| SW | MANUF. | MODEL | SN | TYPE | HEAD | THREAD | K | HEAD | TC/DEPTH | TEMP | QTY |
| | | | | | | | | | | | |
| | | | | | | | | | | | |
| | | | | | | | | | | | |
| | | | | | | | | | | | |
| | | | | | | | | | | | |

GENERAL NOTES

- ALL MATERIAL AND EQUIPMENT TO BE USED SHALL BE APPROVED.
- PIPE DIMENSIONS ARE CENTER TO CENTER EXCEPT HANGERS & BRACKETS SHOW TRUBLY (S) WHICH ARE END TO END.
- VERTICAL DIMENSIONS SHALL BE PROVIDED IN ACCORDANCE WITH NFPA HANGERS 10.1.2.1.2.1.
- PIPE HANGERS AND METHOD OF HANGING TO BE IN ACCORDANCE WITH NFPA HANGERS 10.1.2.1.2.1.2.
- PIPING SHALL BE IN ACCORDANCE WITH NFPA HANGERS 10.1.2.1.2.1.2.1.
- JOINING OF PIPE AND FITTINGS, THREADED & WELDED SHALL BE IN ACCORDANCE WITH NFPA HANGERS 10.1.2.1.2.1.2.2.1.
- OWNER TO PROVIDE ADEQUATE HEAT IN AREAS PROTECTED BY A WET PIPE SPRINKLER SYSTEM TO PREVENT WATER FROM FREEZING.
- ALL NUMBER OF ELECTRICAL DEVICES IF REQUIRED TO BE PROVIDED BY OTHERS.
- PAINTING OF PIPE & EQUIPMENT IF REQUIRED TO BE PROVIDED BY OTHERS.
- FLUORING OF PIPE & EQUIPMENT IF REQUIRED TO BE PROVIDED BY OTHERS.

DESIGN CRITERIA

SEE NOTES SHEET THIS SHEET

PIPE NOTES

REVISIONS

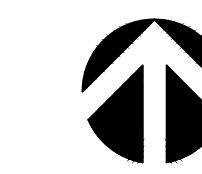
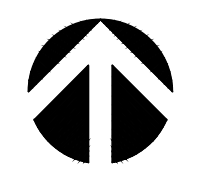
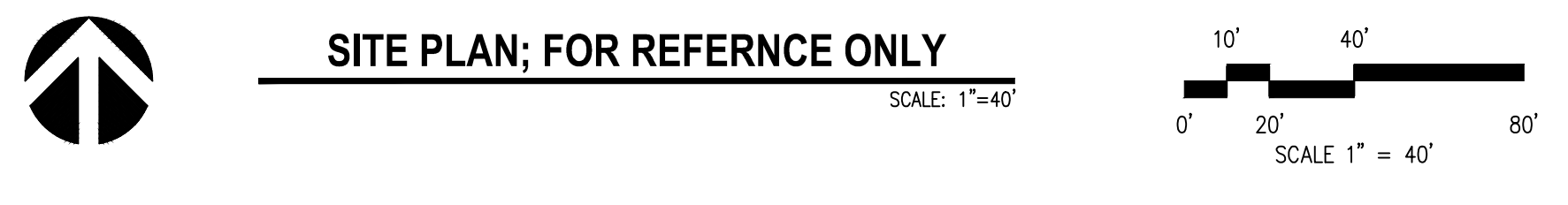
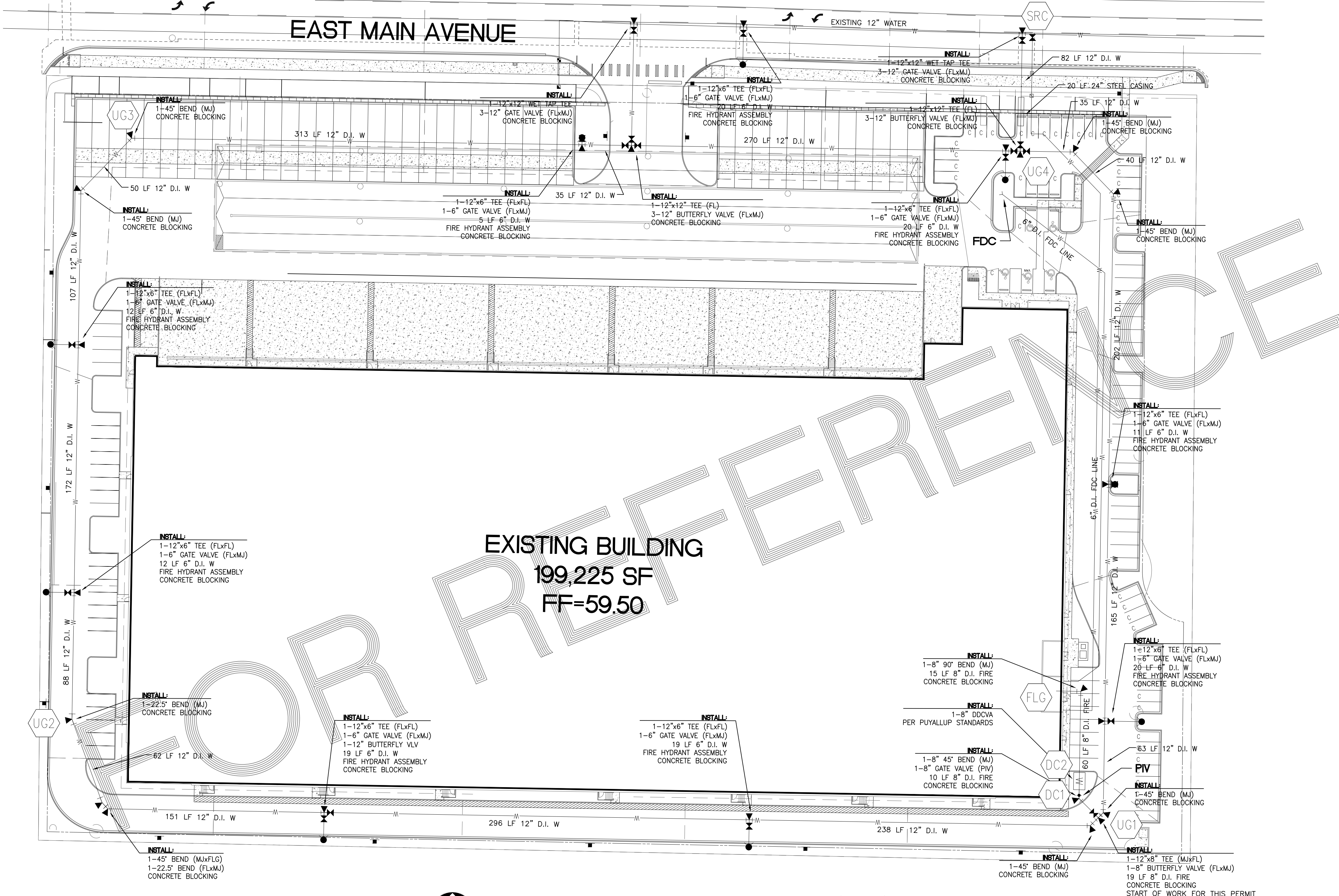
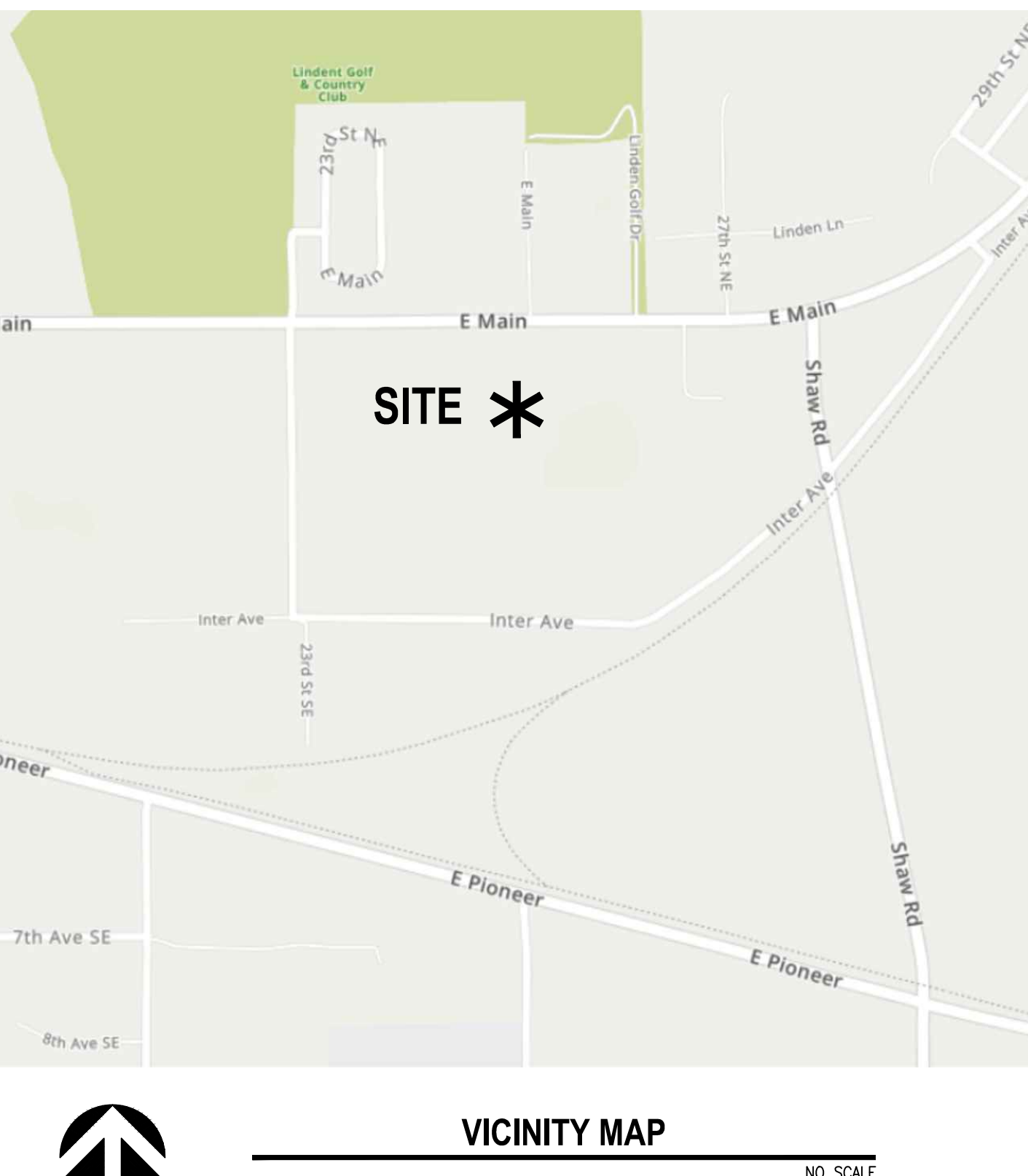
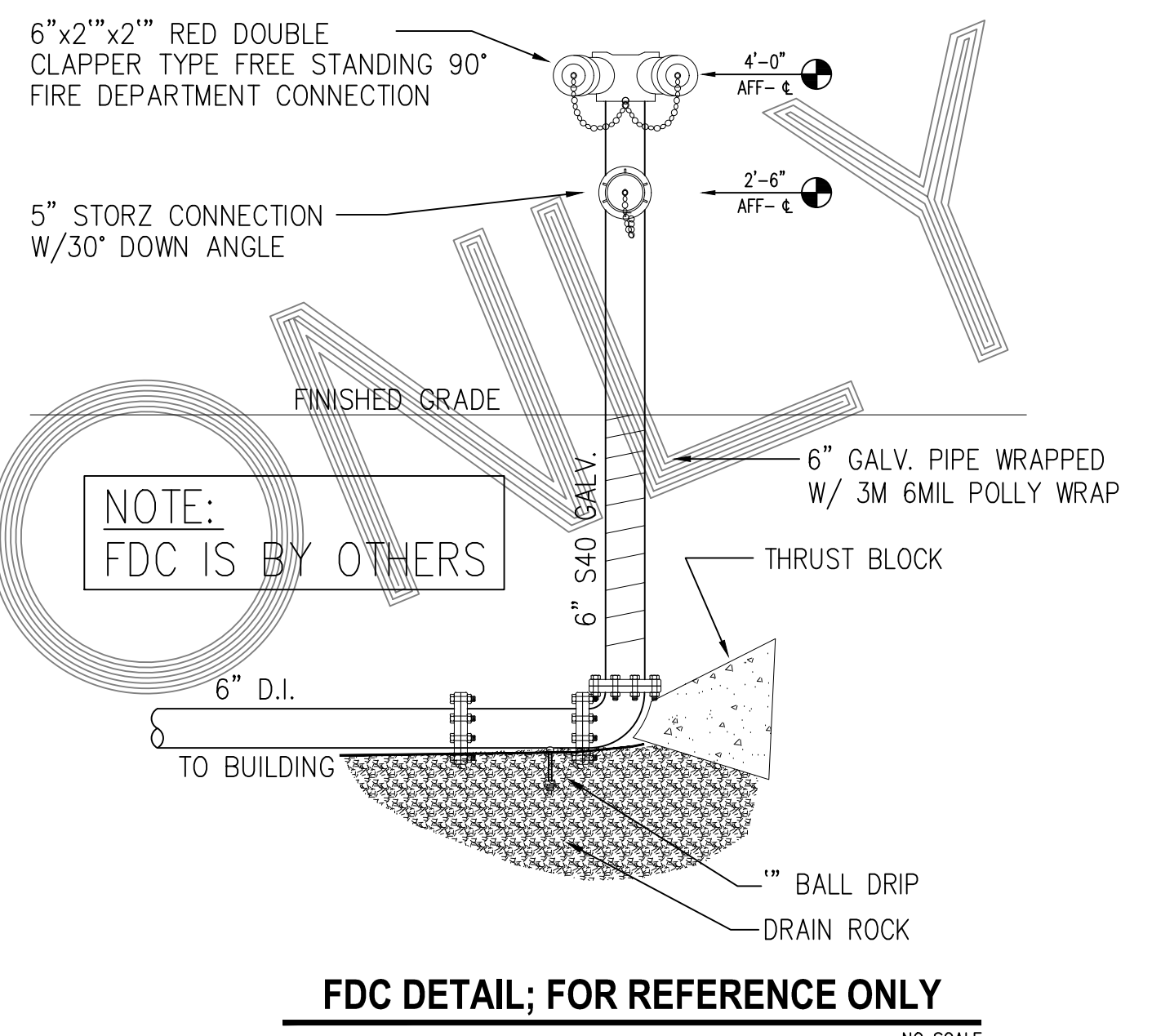
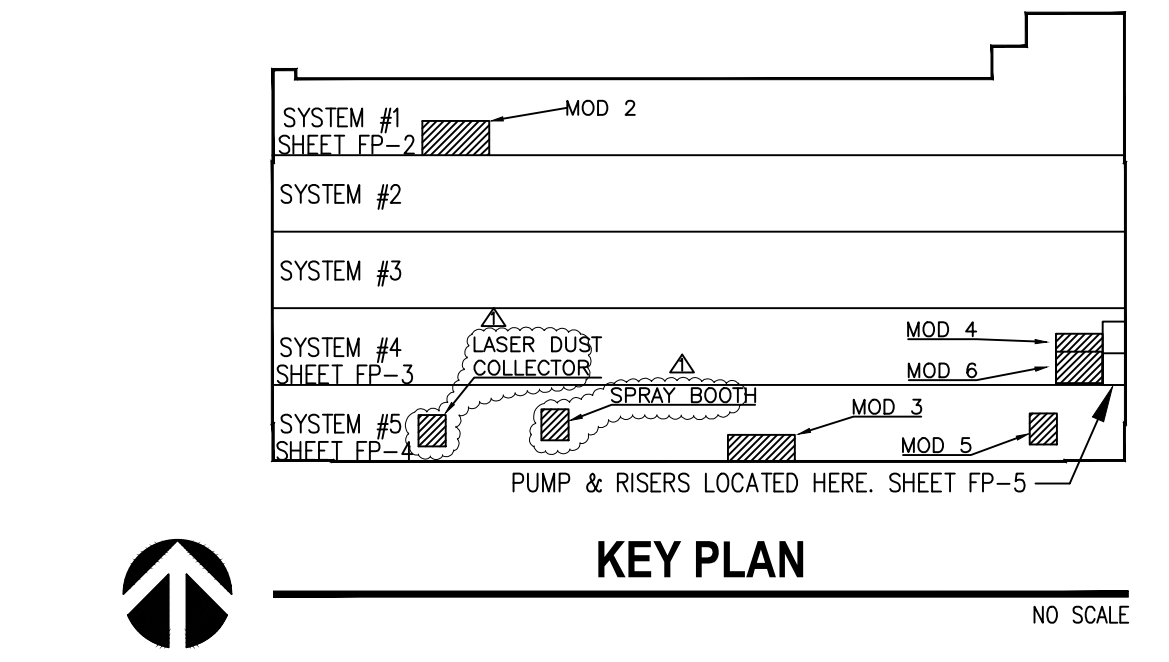
| NO | DATE | BY | DESCRIPTION |
|----|----------|-----|---|
| 1 | 06/19/23 | DJS | UPDATED AREA OF COVERAGE PER FFE REPORT |

CONTRACT WITH:
POE CONSTRUCTION COMPANY
1510 WEST VALLEY HWY N, SUITE 103
AUBURN, WA 98001

PROJECT NAME:
RED DOT TI
2504 EAST MAIN
PUYALLUP, WA 98372

PATRIOT FIRE PROTECTION, INC.
2707 70TH AVENUE EAST
TACOMA, WA 98424
TEL: (253) 926-2200
FAX: (253) 922-6150

WWW.PATRIOTFIRE.COM
PATRIOT@PATRIOTFIRE.COM
FIRE SPRINKLERS SAVE LIVES!

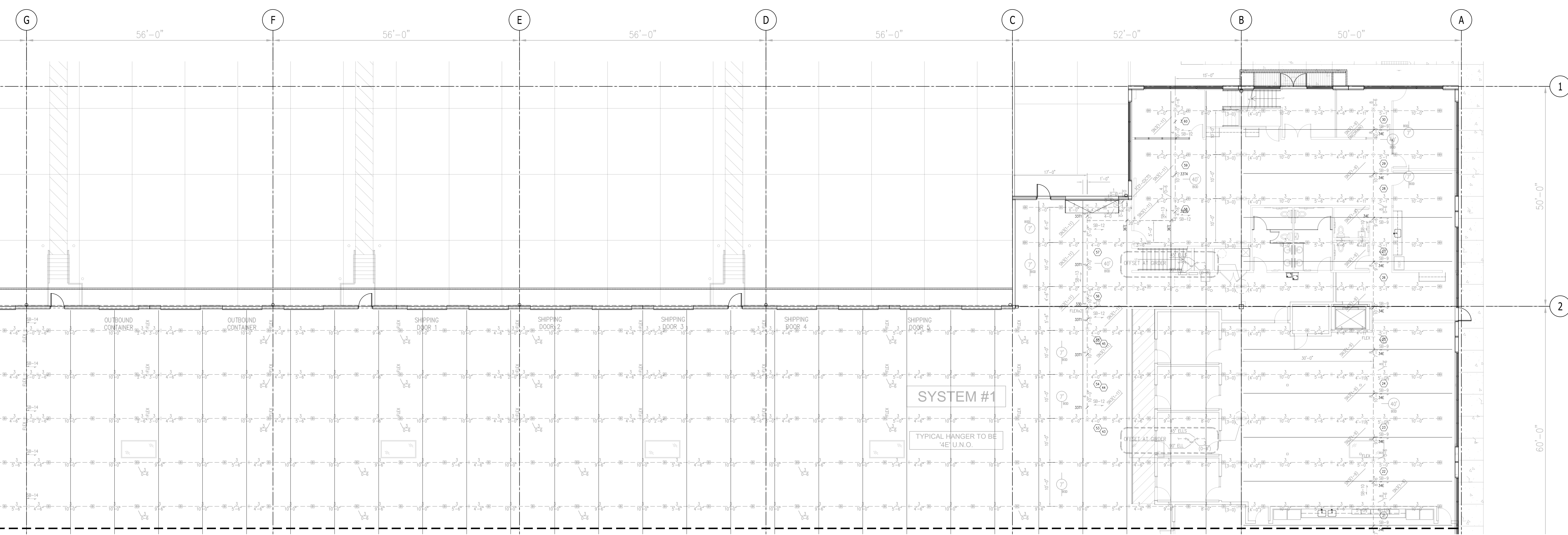
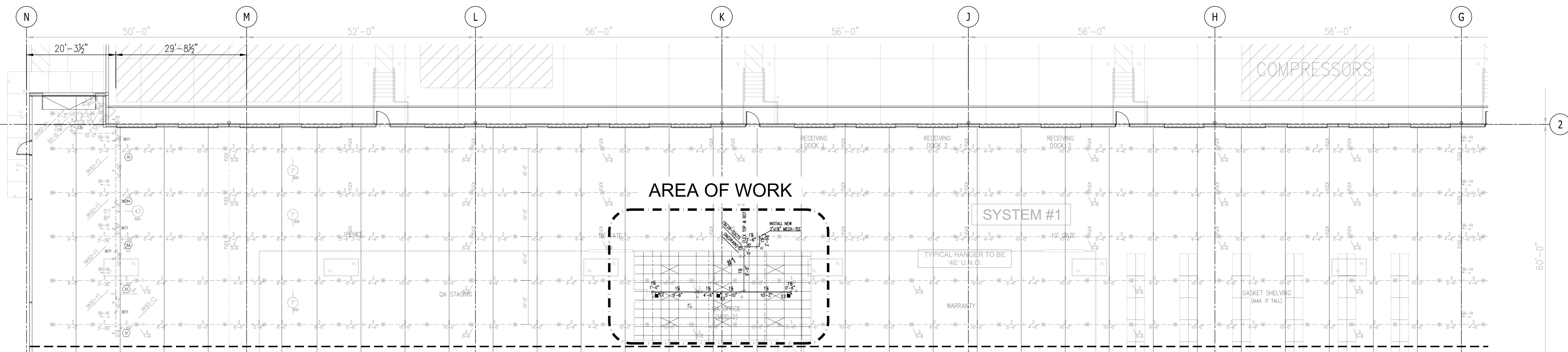


VICINITY MAP

NO SCALE

SITE PLAN; FOR REFERENCE ONLY

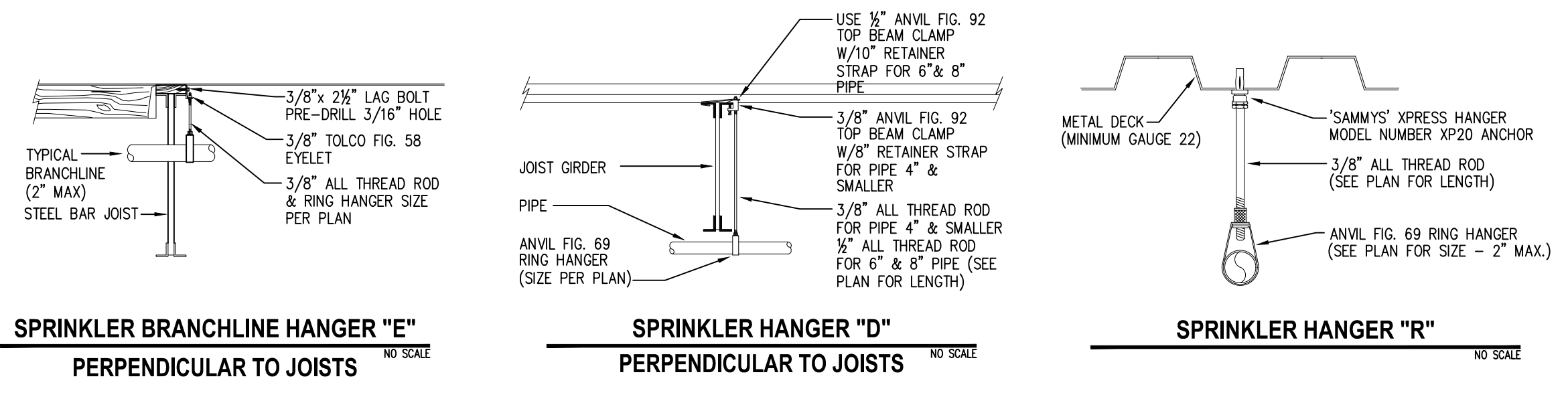
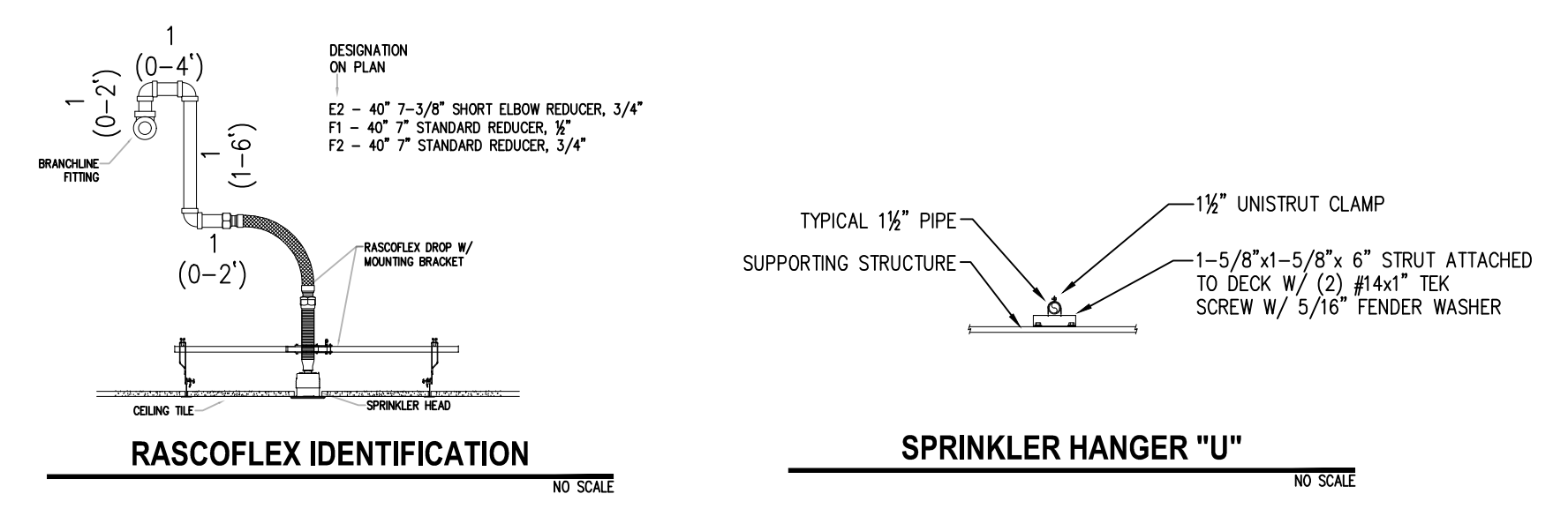
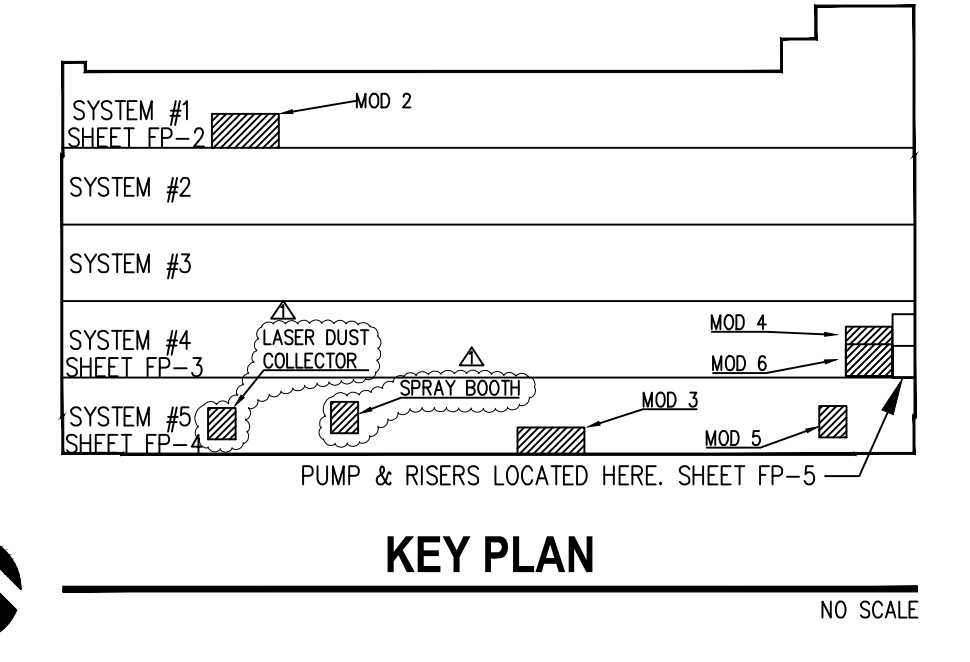
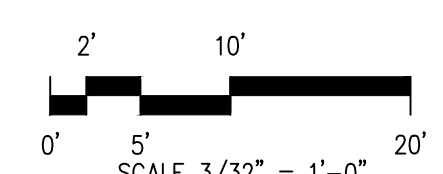
SCALE: 1"=40'



City of Puyallup
Development & Permitting Services
ISSUED PERMIT

| | |
|-------------|--------------|
| Building | Planning |
| Engineering | Public Works |
| Fire | Traffic |

SYSTEM #1 FIRE SPRINKLER PLAN
 SCALE: 3/32"=1'-0"



| SN | MANUF. | MODEL | SN | TYPE | HEAD | THREAD | MECH. | SIZE | HEAD | EDUCO | TEMP | QTY |
|---------|----------|-------|------|------|---------|--------|-------|------|-------|---------|------|-----|
| 1 | RELIABLE | FR80 | R842 | ORC | PENDENT | M4 | 3/4" | 8.0K | CHROM | SEM-REC | 135 | 3 |
| TOTAL 3 | | | | | | | | | | | | |

STATE CERTIFICATION
 WASHINGTON STATE
CERTIFICATE OF COMPETENCY
 FIRE PROTECTION SPRINKLER SYSTEMS
 Pietro Domonte
 5541-0610-C Level 3
 Patriot Fire Protection, Inc.
 PATRIFP099CF
 Signature: *Pietro Domonte*
 06/19/2023

APPROVAL REQUIRED
 CITY OF PUYALLUP

| FITTING LEGEND | | HANGER LEGEND | |
|----------------|------------------------|---------------|----------------------|
| P | PIPE-O-LET | A | "U" HOOK |
| SN | GROOVED SHAPED NIPPLE | B | COACH SCREW ROD |
| TSN | THREADED SHAPED NIPPLE | D | BM. CLAMP W/ "STRAP" |
| ADN | ADJUSTABLE DROP NIPPLE | E | EYELET |
| FLG | FLANGE | G | CEILING FLANGE |
| MC | MECHANICAL COUPLING | H | SIDE BEAM BRACKET |
| CS | CONCRETE SETTING | K | SHORT CLIP |
| CS | CONCRETE SETTING | M | ALL THREAD ROD |
| CS | CONCRETE SETTING | N | TOGGLE NUT |
| CS | CONCRETE SETTING | P | POWDER DRIVEN STUD |
| CS | CONCRETE SETTING | R | SAMMY XPRESS |
| CS | CONCRETE SETTING | T | PIPE SPIKE |
| CS | CONCRETE SETTING | U | TRAPEZE HANGER |
| CS | CONCRETE SETTING | V | WALL BRACKET HANGER |

DESIGN CRITERIA
SEE NOTES FP-1

PIPE NOTES
 1. WELDED/GROOVED MAIN PIPING TO BE SCH. 10 BLACK PIPE
 2. WELDED/GROOVED BRANCH LINE PIPING TO BE EDDY FLOW PIPE
 3. THREADED PIPING TO BE SCH. 40 BLACK PIPE.

REVISIONS

| NO. | DATE | BY | DESCRIPTION |
|-----|----------|-----|---|
| 1 | 06/19/23 | DJS | UPDATED AREA OF COVERAGE PER FPE REPORT |

CONTRACT WITH:
 POE CONSTRUCTION
 1519 W VALLEY HWY N, SUITE 103
 AUBURN, WA 98001
 CLAY JOHNSON: 253-833-2400

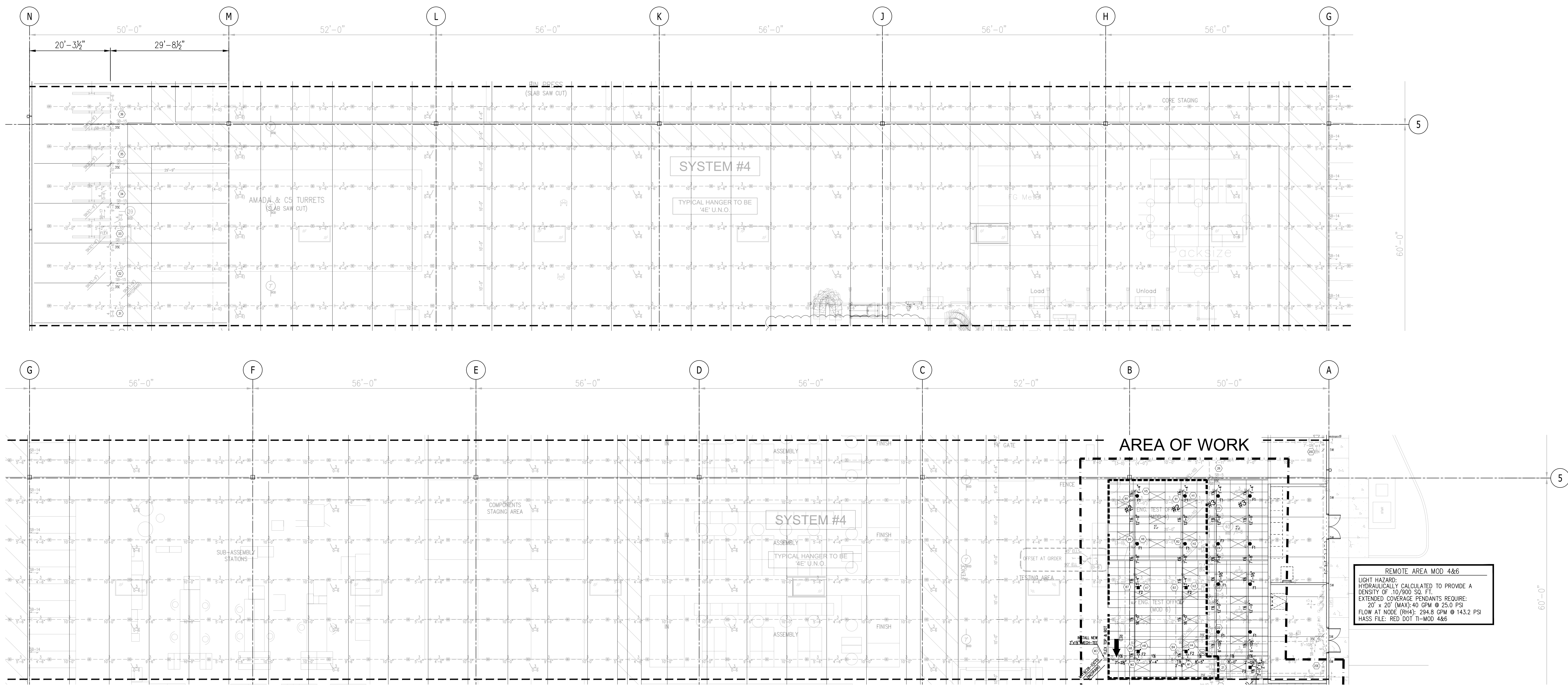
PROJECT NAME:
 RED DOT TI

2504 EAST MAIN
 PUYALLUP, WA 98372

PATRIOT FIRE PROTECTION, INC.
 WWW.PATRIOTFIRE.COM
 DEREK STRICKLAND@PATRIOTFIRE.COM
 TEL: (253) 926-2290
 FAX: (253) 922-6150

DESIGNER: DEREK STRICKLAND
DATE: 05-19-2023
JOB NO.: 11-2404

SHEET: 2 OF 5
FP-2

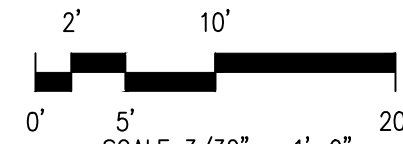


REMOTE AREA MOD 4/6
 LIGHT HAZARD:
 HYDRAULICALLY CALCULATED TO PROVIDE A
 DENSITY OF 10/900 SQ. FT.
 EXTENDED COVERAGE PENDANTS REQUIRE:
 20' x 20' (MAX) 40 GPM @ 25.0 PSI
 FLOW AT NODE (RH4): 294.8 GPM @ 143.2 PSI
 HASS FILE: RED DOT TI-MOD 4&6



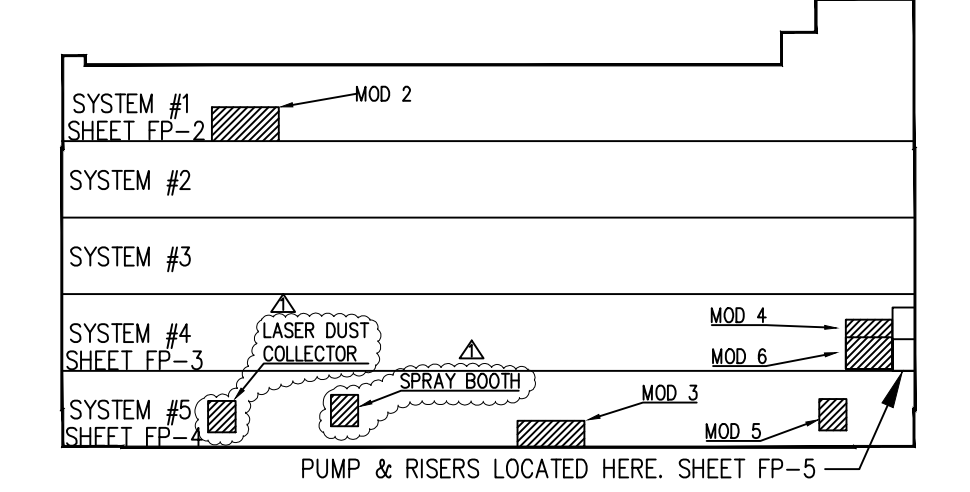
SYSTEM #4 FIRE SPRINKLER PLAN

SCALE: 3/32"=1'-0"



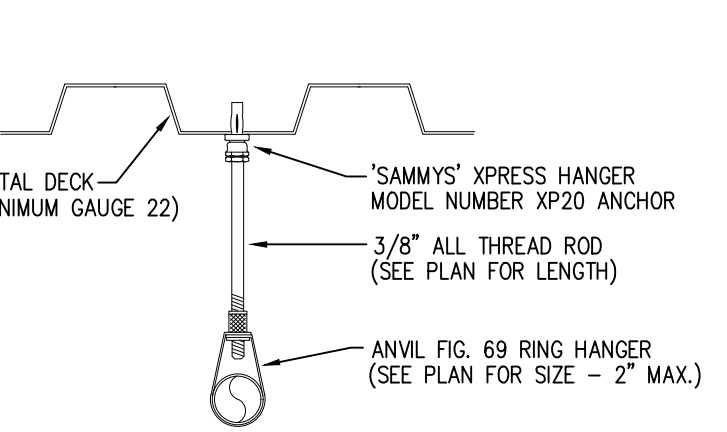
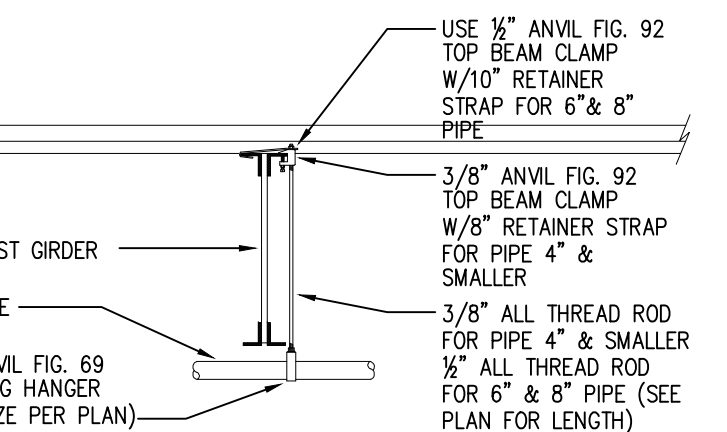
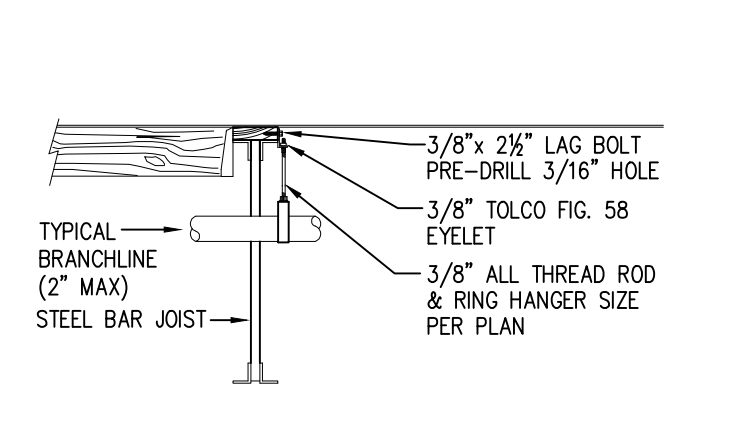
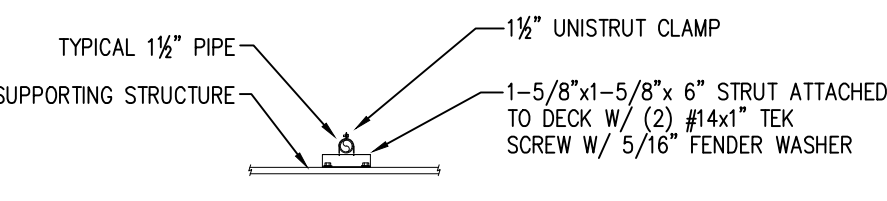
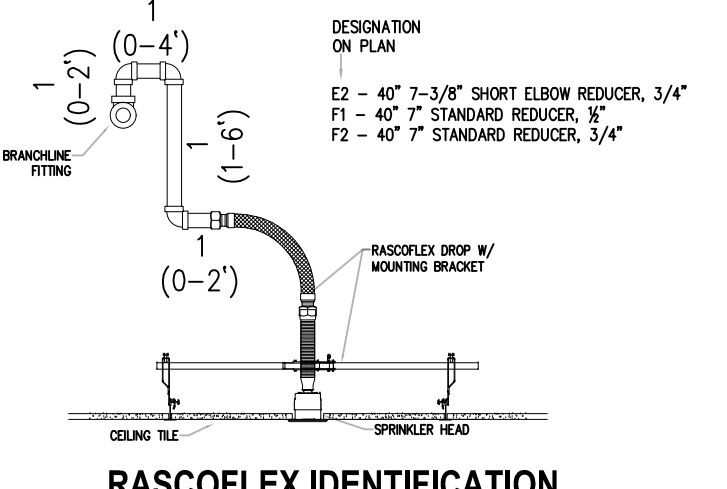
**City of Puyallup
 Development & Permitting Services
 ISSUED PERMIT**

| | |
|-------------|--------------|
| Building | Planning |
| Engineering | Public Works |
| Fire | Traffic |



KEY PLAN

NO SCALE



| SN | MANF. | MODEL | SN | TYPE | HEAD | THREAD | FACE | TEMP | QTY | |
|----|----------|-------|-------|-------------|------|--------|------|----------------|----------|----|
| ● | RELIABLE | FR80 | RH82 | ORC PENDANT | M4 | 1/2" | 5.8K | CHROME SEM-REC | 135 | 5 |
| ● | RELIABLE | FR56 | RA414 | OR PENDANT | M4 | 1/2" | 5.8K | CHROME SEM-REC | 152 | 12 |
| | | | | | | | | | TOTAL 17 | |

STATE CERTIFICATION
 WASHINGTON STATE
 CERTIFICATE OF COMPETENCY
 FIRE PROTECTION SPRINKLER SYSTEMS
 Pietro Demonte
 5541-0610-C Level 3
 Patriot Fire Protection, Inc.
 PATRIFP0999CF
 06/19/2023
 06/19/2023

APPROVAL REQUIRED
 CITY OF PUYALLUP

| FITTING LEGEND | |
|----------------|---|
| P | PIPE-O-LET |
| SN | GROOVED SHAPED NIPPLE |
| TSN | THREADED SHAPED NIPPLE |
| ADN | ADJUSTABLE DROP NIPPLE |
| FLG | FLANGE |
| WC | WELDING COUPLING |
| CS | CROSSING 90° CROSS LINE OF PIPE IN INCHES |
| 2 | 2 - WAY EARTHQUAKE BRACE |
| 4 | 4 - WAY EARTHQUAKE BRACE |

| HANGER LEGEND | |
|---------------|----------------------|
| A | "U" HOOK |
| B | COACH SCREW ROD |
| D | BM. CLAMP W/ "STRAP" |
| E | EYELET |
| F | FLUSH SHELL |
| G | CEILING FLANGE |
| H | SIDE BEAM BRACKET |
| K | SHORT CLIP |
| M | ALL THREAD ROD |
| N | TOGGLE NUT |
| P | POWDER DRIVEN STUD |
| R | SAMMY XPRESS |
| T | PIPE SPIKE |
| U | TRAPEZE HANGER |
| V | WALL BRACKET HANGER |

| SPRINKLER LEGEND | |
|------------------|-----------------------|
| SPRINKLER | OFFICE SIZES AND TYPE |
| 1" SPRAY | 1" SPRAY |
| 1 1/2" SPRAY | 1 1/2" SPRAY |
| 2" SPRAY | 2" SPRAY |
| 3" SPRAY | 3" SPRAY |
| 4" SPRAY | 4" SPRAY |
| 5" SPRAY | 5" SPRAY |
| 6" SPRAY | 6" SPRAY |
| 8" SPRAY | 8" SPRAY |
| 10" SPRAY | 10" SPRAY |
| 12" SPRAY | 12" SPRAY |
| 15" SPRAY | 15" SPRAY |
| 20" SPRAY | 20" SPRAY |
| 24" SPRAY | 24" SPRAY |
| 30" SPRAY | 30" SPRAY |
| 36" SPRAY | 36" SPRAY |
| 42" SPRAY | 42" SPRAY |
| 48" SPRAY | 48" SPRAY |
| 54" SPRAY | 54" SPRAY |
| 60" SPRAY | 60" SPRAY |
| 72" SPRAY | 72" SPRAY |
| 84" SPRAY | 84" SPRAY |
| 96" SPRAY | 96" SPRAY |
| 108" SPRAY | 108" SPRAY |
| 120" SPRAY | 120" SPRAY |
| 144" SPRAY | 144" SPRAY |
| 168" SPRAY | 168" SPRAY |
| 192" SPRAY | 192" SPRAY |
| 216" SPRAY | 216" SPRAY |
| 240" SPRAY | 240" SPRAY |
| 264" SPRAY | 264" SPRAY |
| 288" SPRAY | 288" SPRAY |
| 312" SPRAY | 312" SPRAY |
| 336" SPRAY | 336" SPRAY |
| 360" SPRAY | 360" SPRAY |
| 384" SPRAY | 384" SPRAY |
| 408" SPRAY | 408" SPRAY |
| 432" SPRAY | 432" SPRAY |
| 456" SPRAY | 456" SPRAY |
| 480" SPRAY | 480" SPRAY |
| 504" SPRAY | 504" SPRAY |
| 528" SPRAY | 528" SPRAY |
| 552" SPRAY | 552" SPRAY |
| 576" SPRAY | 576" SPRAY |
| 600" SPRAY | 600" SPRAY |
| 624" SPRAY | 624" SPRAY |
| 648" SPRAY | 648" SPRAY |
| 672" SPRAY | 672" SPRAY |
| 696" SPRAY | 696" SPRAY |
| 720" SPRAY | 720" SPRAY |
| 744" SPRAY | 744" SPRAY |
| 768" SPRAY | 768" SPRAY |
| 792" SPRAY | 792" SPRAY |
| 816" SPRAY | 816" SPRAY |
| 840" SPRAY | 840" SPRAY |
| 864" SPRAY | 864" SPRAY |
| 888" SPRAY | 888" SPRAY |
| 912" SPRAY | 912" SPRAY |
| 936" SPRAY | 936" SPRAY |
| 960" SPRAY | 960" SPRAY |
| 984" SPRAY | 984" SPRAY |
| 1008" SPRAY | 1008" SPRAY |
| 1032" SPRAY | 1032" SPRAY |
| 1056" SPRAY | 1056" SPRAY |
| 1080" SPRAY | 1080" SPRAY |
| 1104" SPRAY | 1104" SPRAY |
| 1128" SPRAY | 1128" SPRAY |
| 1152" SPRAY | 1152" SPRAY |
| 1176" SPRAY | 1176" SPRAY |
| 1200" SPRAY | 1200" SPRAY |
| 1224" SPRAY | 1224" SPRAY |
| 1248" SPRAY | 1248" SPRAY |
| 1272" SPRAY | 1272" SPRAY |
| 1296" SPRAY | 1296" SPRAY |
| 1320" SPRAY | 1320" SPRAY |
| 1344" SPRAY | 1344" SPRAY |
| 1368" SPRAY | 1368" SPRAY |
| 1392" SPRAY | 1392" SPRAY |
| 1416" SPRAY | 1416" SPRAY |
| 1440" SPRAY | 1440" SPRAY |
| 1464" SPRAY | 1464" SPRAY |
| 1488" SPRAY | 1488" SPRAY |
| 1512" SPRAY | 1512" SPRAY |
| 1536" SPRAY | 1536" SPRAY |
| 1560" SPRAY | 1560" SPRAY |
| 1584" SPRAY | 1584" SPRAY |
| 1608" SPRAY | 1608" SPRAY |
| 1632" SPRAY | 1632" SPRAY |
| 1656" SPRAY | 1656" SPRAY |
| 1680" SPRAY | 1680" SPRAY |
| 1704" SPRAY | 1704" SPRAY |
| 1728" SPRAY | 1728" SPRAY |
| 1752" SPRAY | 1752" SPRAY |
| 1776" SPRAY | 1776" SPRAY |
| 1800" SPRAY | 1800" SPRAY |
| 1824" SPRAY | 1824" SPRAY |
| 1848" SPRAY | 1848" SPRAY |
| 1872" SPRAY | 1872" SPRAY |
| 1896" SPRAY | 1896" SPRAY |
| 1920" SPRAY | 1920" SPRAY |
| 1944" SPRAY | 1944" SPRAY |
| 1968" SPRAY | 1968" SPRAY |
| 1992" SPRAY | 1992" SPRAY |
| 2016" SPRAY | 2016" SPRAY |
| 2040" SPRAY | 2040" SPRAY |
| 2064" SPRAY | 2064" SPRAY |
| 2088" SPRAY | 2088" SPRAY |
| 2112" SPRAY | 2112" SPRAY |
| 2136" SPRAY | 2136" SPRAY |
| 2160" SPRAY | 2160" SPRAY |
| 2184" SPRAY | 2184" SPRAY |
| 2208" SPRAY | 2208" SPRAY |
| 2232" SPRAY | 2232" SPRAY |
| 2256" SPRAY | 2256" SPRAY |
| 2280" SPRAY | 2280" SPRAY |
| 2304" SPRAY | 2304" SPRAY |
| 2328" SPRAY | 2328" SPRAY |
| 2352" SPRAY | 2352" SPRAY |
| 2376" SPRAY | 2376" SPRAY |
| 2400" SPRAY | 2400" SPRAY |
| 2424" SPRAY | 2424" SPRAY |
| 2448" SPRAY | 2448" SPRAY |
| 2472" SPRAY | 2472" SPRAY |
| 2496" SPRAY | 2496" SPRAY |
| 2520" SPRAY | 2520" SPRAY |
| 2544" SPRAY | 2544" SPRAY |
| 2568" SPRAY | 2568" SPRAY |
| 2592" SPRAY | 2592" SPRAY |
| 2616" SPRAY | 2616" SPRAY |
| 2640" SPRAY | 2640" SPRAY |
| 2664" SPRAY | 2664" SPRAY |
| 2688" SPRAY | 2688" SPRAY |
| 2712" SPRAY | 2712" SPRAY |
| 2736" SPRAY | 2736" SPRAY |
| 2760" SPRAY | 2760" SPRAY |
| 2784" SPRAY | 2784" SPRAY |
| 2808" SPRAY | 2808" SPRAY |
| 2832" SPRAY | 2832" SPRAY |
| 2856" SPRAY | 2856" SPRAY |
| 2880" SPRAY | 2880" SPRAY |
| 2904" SPRAY | 2904" SPRAY |
| 2928" SPRAY | 2928" SPRAY |
| 2952" SPRAY | 2952" SPRAY |
| 2976" SPRAY | 2976" SPRAY |
| 3000" SPRAY | 3000" SPRAY |

| DESIGN CRITERIA | | | |
|-----------------------------|--|-----|---|
| SEE NOTES SHEET FP-1 | | | |
| PIPE NOTES | | | |
| 1. | WELDED/GROOVED MAIN PIPING TO BE SCH. 10 BLACK PIPE | | |
| 2. | WELDED/GROOVED BRANCH LINE PIPING TO BE EDDY FLOW PIPE | | |
| 3. | THREADED PIPING TO BE SCH. 40 BLACK PIPE. | | |
| REVISIONS | | | |
| NO. | DATE | BY | DESCRIPTION |
| 1. | 06/19/23 | DJS | UPDATED AREA OF COVERAGE PER FPE REPORT |

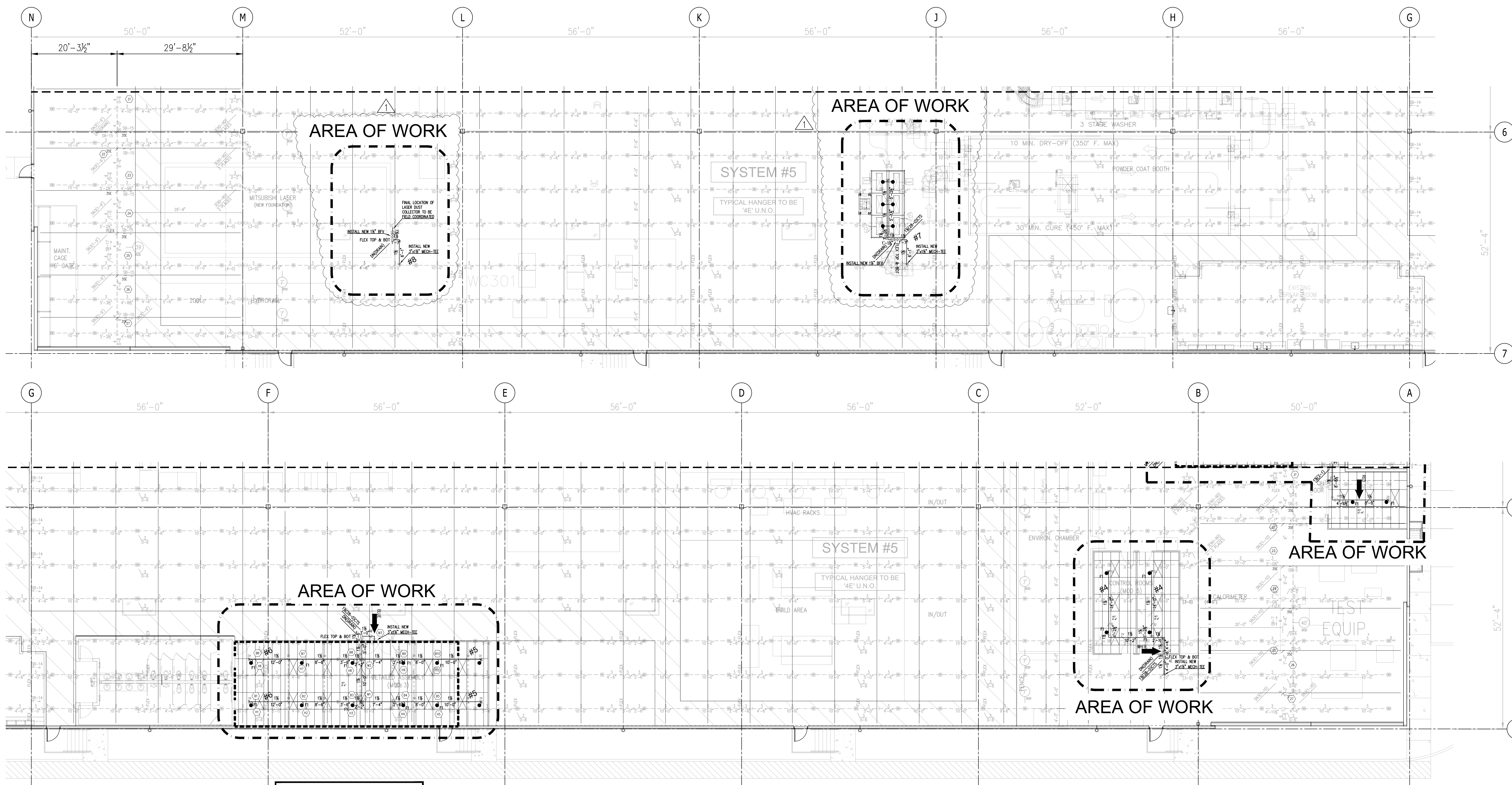
CONTRACT WITH:
POE CONSTRUCTION
 1515 W VALLEY HWY N, SUITE 103
 AUBURN, WA 98001
 CLAY JOHNSON: 253-833-2400

PROJECT NAME:
RED DOT TI
 2504 EAST MAIN
 PUYALLUP, WA 98372

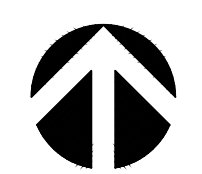
DESIGNER: DEREK STRICKLAND
 DATE: 05-19-2023
 JOB NO.: 11-2404

SHEET: 3 OF 5
FP-3

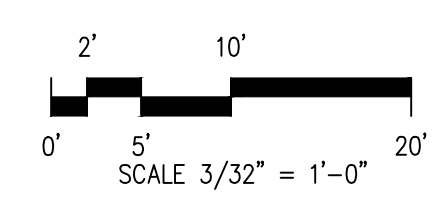
PATRIOT FIRE PROTECTION, INC.
 WWW.PATRIOTFIRE.COM
 DEREK-STRICKLAND@PATRIOTFIRE.COM
 TEL: (253) 926-2290
 FAX: (253) 922-6150



REMOTE AREA DETAILED ASSEMBLY
 ORDINARY HAZARD - GROUP 2
 HYDRAULICALLY CALCULATED TO PROVIDE A
 DENSITY OF .20/900 SQ. FT.
 FLOW AT NODE (RHS): 250.5 GPM @ 113.1 PSI
 HAASS FILE: RED DOT TI-DETAILED ASSEMBLY

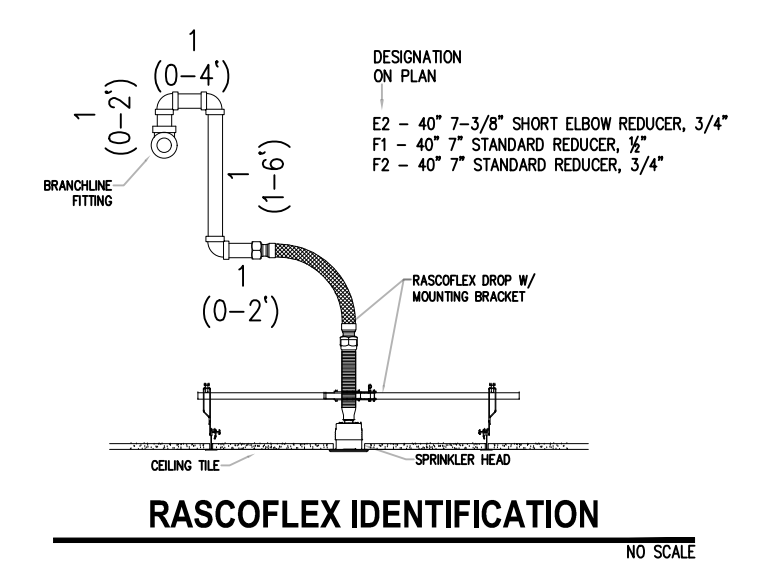
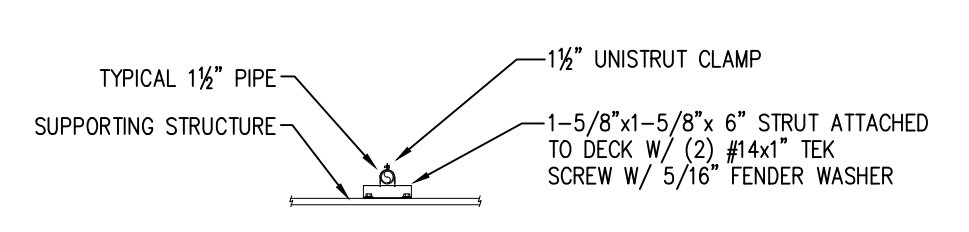
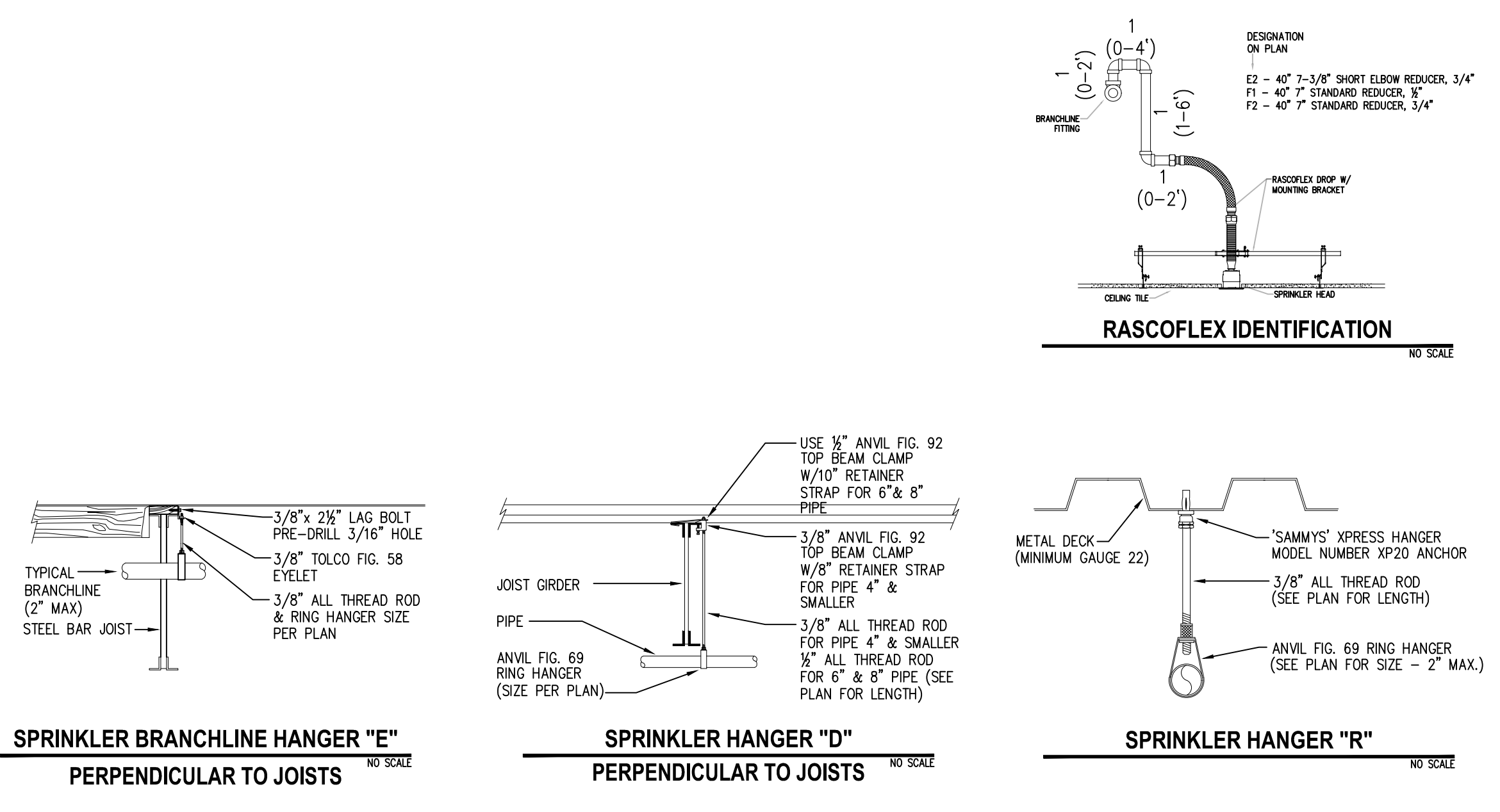
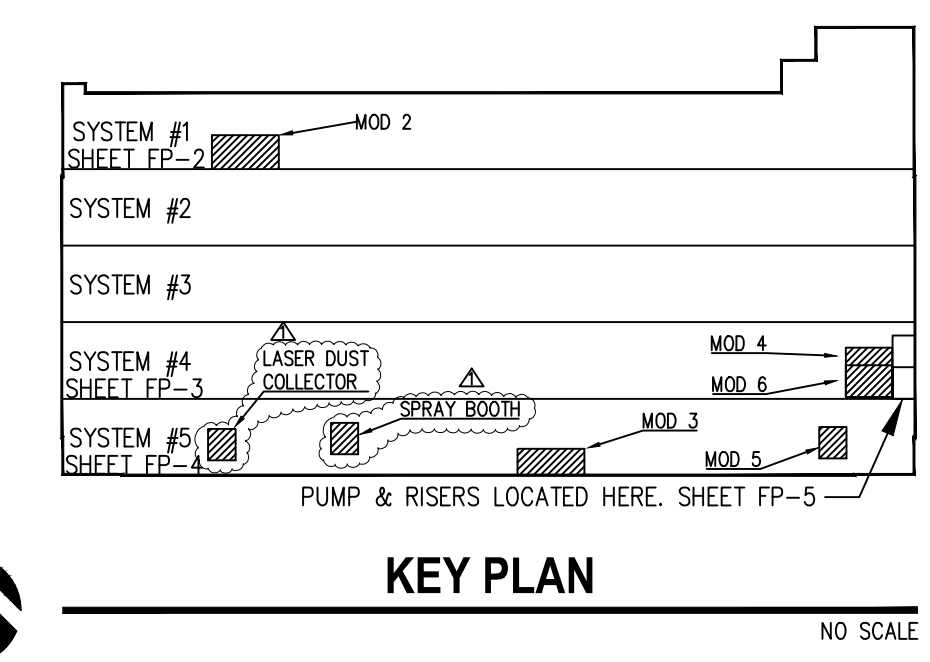


SYSTEM #5 FIRE SPRINKLER PLAN
 SCALE: 3/32" = 1'-0"



City of Puyallup
 Development & Permitting Services
ISSUED PERMIT

| | |
|-------------|--------------|
| Building | Planning |
| Engineering | Public Works |
| Fire | Traffic |

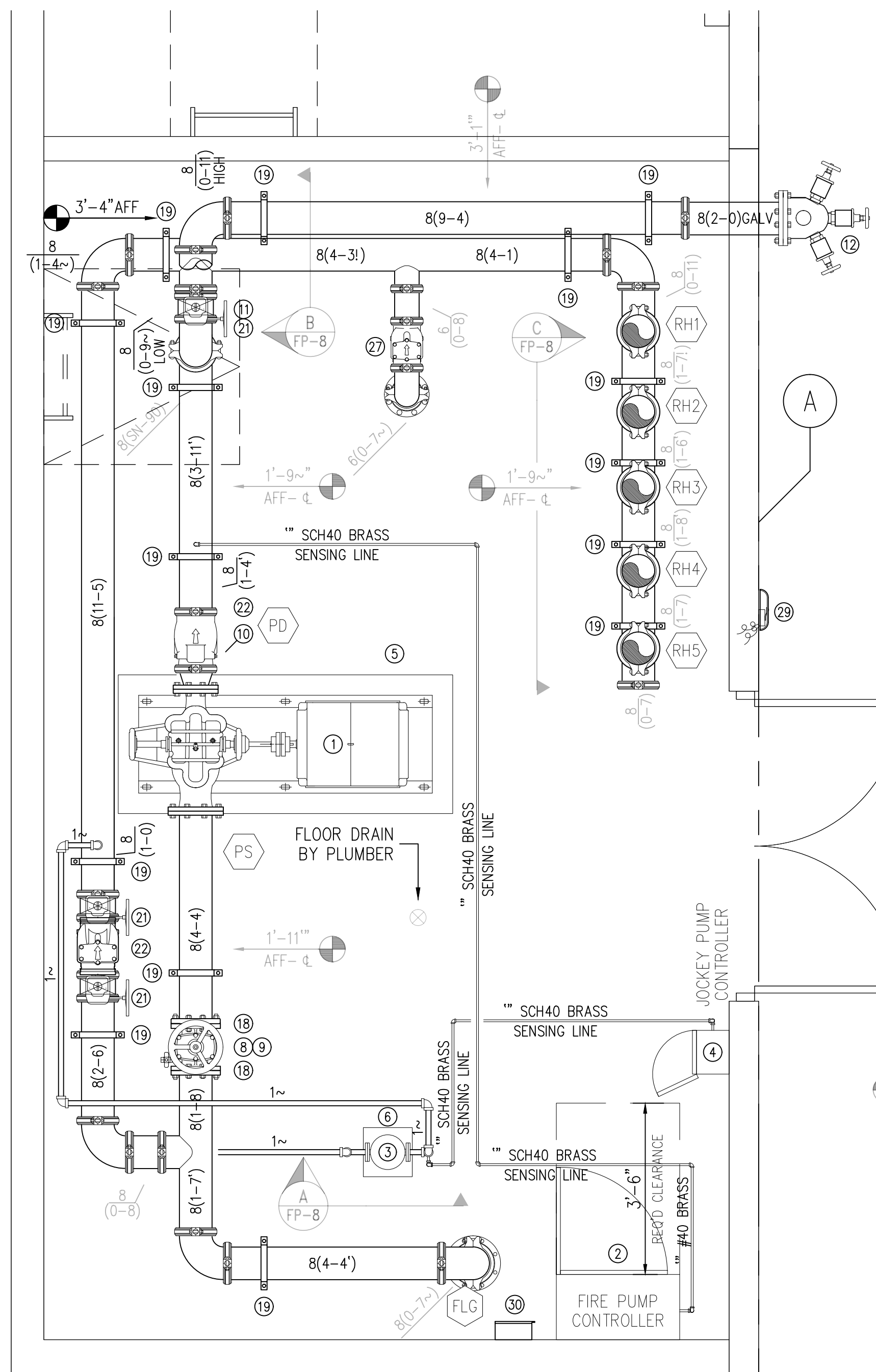


| SN | MANUF. | MODEL | SN | TYPE | HEAD THREAD | FACE | HEAD ESDUCH | TEMP | QTY | |
|----|----------|-------|--------|------------|-------------|------|-------------|----------------|-------|----|
| ● | RELIABLE | FR56 | RAM414 | OR PENDANT | M4 | 1/2" | 5.6K | CHROME SEM-REC | 150 | 18 |
| | | | | | | | | | TOTAL | 18 |

| STATE CERTIFICATION | | FITTING LEGEND | | HANGER LEGEND | | QUALITY CONTROL BY | |
|--|--|--|--|--|--|--|--|
| WASHINGTON STATE FIRE PROTECTION SPRINKLER SYSTEMS | | P PIPE-O-LET SN GROOVED SHAPED NIPPLE TSN THREADED SHAPED NIPPLE ADN ADJUSTABLE DROP NIPPLE FLG FLANGE KC REDUCING COUPLING | | A 'U' HOOK B COACH SCREW ROD D BM. CLAMP W/ "STRAP" E EYELET F FLUSH SHELL G CEILING FLANGE H SIDE BEAM BRACKET K SHORT CLIP M ALL THREAD ROD N TOGGLE NUT P POWDER DRIVEN STUD R SAMMY XPRESS T PIPE SPIKE U TRAPEZOID HANGER V WALL BRACKET HANGER | | DATE: 06/19/2023 DATE: 06/19/2023 | |
| Pietro Demonte 5941-0610-0 Level 3 Patriot Fire Protection, Inc. PATRIFP099CF | | 2 - WAY EARTHQUAKE BRACE 4 - WAY EARTHQUAKE BRACE | | SPRINKLER LEGEND | | GENERAL NOTES | |
| APPROVAL REQUIRED CITY OF PUYALLUP | | SPRINKLER ORifice SIZES AND TYPE | | SPRINKLER LEGEND | | 1. ALL MATERIAL AND EQUIPMENT TO BE NEW AND AS LISTED OR FW APPROVED. 2. PIPE DIMENSIONS ARE GIVEN TO CENTER UNLESS OTHERWISE SHOWN (DIMENSIONS ARE END TO END). 3. EARTHQUAKE BRACING SHALL BE PROVIDED IN ACCORDANCE WITH NFPA PARALLEL NO. 13, 2016 EDITION. 4. PIPE HANGERS AND METHOD OF HANGING TO BE IN ACCORDANCE WITH NFPA PARALLEL NO. 13, 2016 EDITION. 5. HANGING SHALL BE IN ACCORDANCE WITH NFPA PARALLEL NO. 13, 2016 EDITION. 6. JOINTING OF PIPE AND FITTINGS, THREADED & WELDED, SHALL BE IN ACCORDANCE WITH NFPA PARALLEL NO. 13, 2016 EDITION. 7. OWNER TO PROVIDE ANCHORS HEAD IN AREA PROTECTED BY A MET PIPE SPRINKLER SYSTEM TO PREVENT WATER IN PIPES FROM FREEZING. 8. ALL WIRING OF ELECTRICAL DEVICES (IF REQUIRED) TO BE PROVIDED BY OTHERS. 9. PAINTING OF PIPE & EQUIPMENT (IF REQUIRED) TO BE PROVIDED BY OTHERS. 10. FINISHING OF PIPE & EQUIPMENT (IF REQUIRED) TO BE PROVIDED BY OTHERS. | |

| DESIGN CRITERIA | | | |
|---|----------|-----|---|
| SEE NOTES SHEET FP-1 | | | |
| PIPE NOTES 1. WELDED/GROOVED MAIN PIPING TO BE SCH. 10 BLACK PIPE 2. WELDED/GROOVED BRANCH LINE PIPING TO BE EDDY FLOW PIPE 3. THREADED PIPING TO BE SCH. 40 BLACK PIPE. | | | |
| REVISIONS | | | |
| NO. | DATE | BY | DESCRIPTION |
| 1 | 06/19/23 | DJS | UPDATED AREA OF COVERAGE PER FPE REPORT |

| | |
|----------------|---|
| CONTRACT WITH: | POE CONSTRUCTION 1515 W VALLEY HWY N, SUITE 103 AUBURN, WA 98001 CLAY JOHNSON: 253-833-2400 |
| PROJECT NAME: | RED DOT TI 2504 EAST MAIN PUYALLUP, WA 98372 |
| DESIGNER: | PATRIFP099CF Patriot Fire Protection, Inc. 27107 70TH AVENUE EAST TACOMA, WA 98424 TEL: (253) 926-2290 FAX: (253) 922-6150 |
| DATE: | 05-19-2023 |
| JOB NO.: | 11-2404 |
| SHEET: | 4 OF 5 |
| FP-4 | |



NOTE:
PUMP ROOM TO BE CONSTRUCTED TO PROVIDE A MINIMUM 1 HOUR RATED SEPARATION FROM OTHER BLDG AREAS PER NFPA20

NOTE:
IT IS THE OWNER'S RESPONSIBILITY TO MAINTAIN 40T MINIMUM IN ALL BUILDING AREAS CONTAINING WET SPRINKLER PIPING.

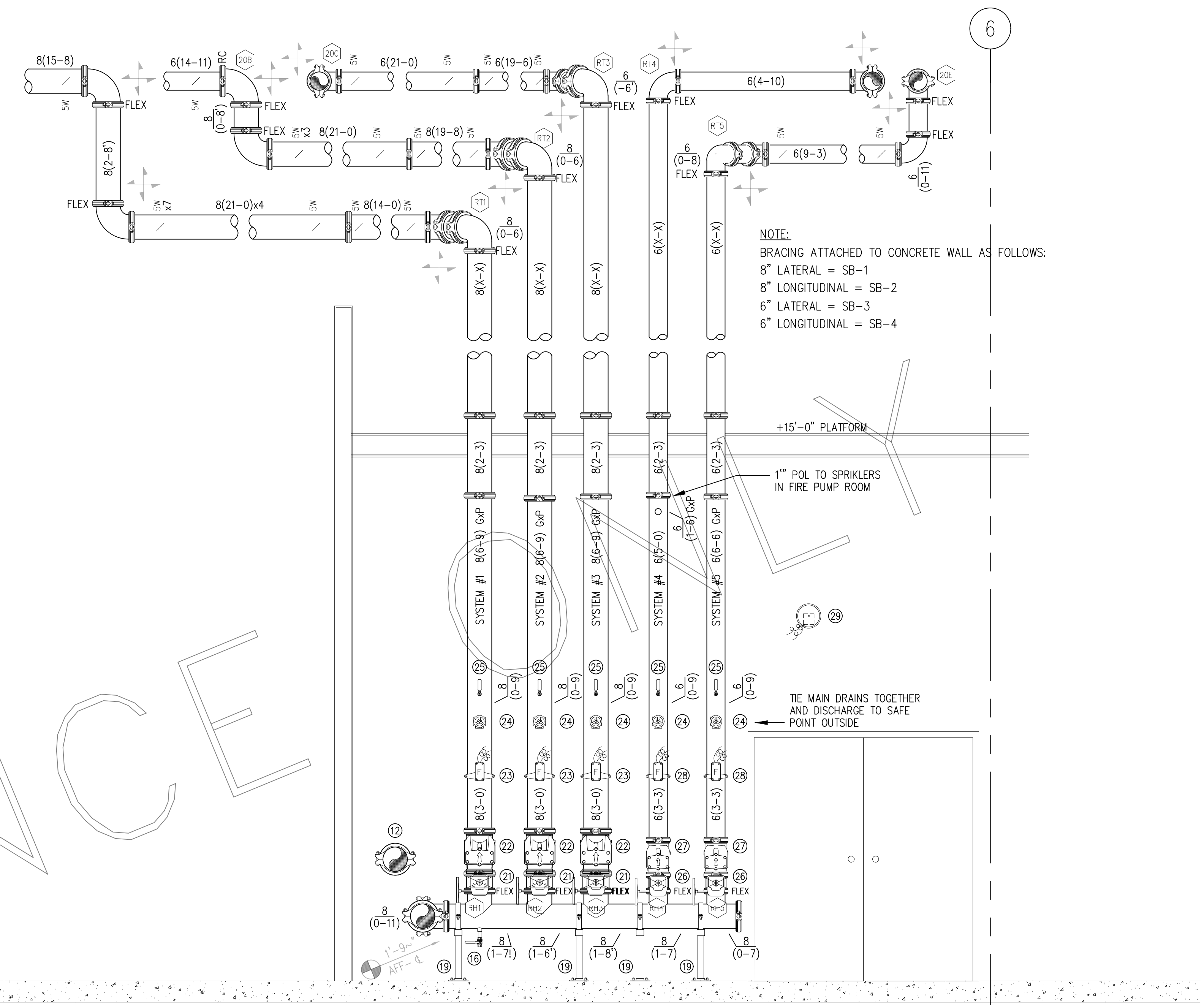
| PUMP & RISER LEGEND | | | | | |
|---------------------|--------|----------------|------------|--|------|
| ITEM# | SIZE | MAKE | MODEL NO. | DESCRIPTION | QTY. |
| 1 | 8"x6" | PATTERSON PUMP | 6AEP168/1 | 1,500 GPM @ 105 PSI BOOST - ELECTRIC FIRE PUMP 125 HP, 460V, 3PH, 60HZ | 1 |
| 2 | 480V | CUTLERHAMMER | FD-70-125D | MAIN FIRE PUMP CONTROLLER - WYE DELTA OPEN | 1 |
| 3 | 2HP | GRUNDFOS | CR 3-11 | JOCKEY PUMP - 2HP, 460V, 3PH | 1 |
| 4 | 480V | CUTLERHAMMER | XTJP-G04 | JOCKEY PUMP CONTROLLER | 1 |
| 5 | -- | -- | -- | 88"x37"x11" CONCRETE PUMP PAD (BY G.C.) | 1 |
| 6 | -- | -- | -- | 12"x12"x3" CONCRETE PUMP PAD (BY G.C.) | 1 |
| 7 | -- | -- | -- | -- | -- |
| 8 | 8" | KENNEDY | 8068A | FLANGED OS&Y GATE VALVE | 1 |
| 9 | -- | POTTER | OSYSU-2 | OS&Y TAMPER SWITCH | 3 |
| 10 | 8"x6" | WCTAULIC | NO. 50 | GROOVED CONCENTRIC REDUCER | 1 |
| 11 | 8" | TYCO | BFV-300C | BUTTERFLY VLV W/ REVERSE TAMPER (NORMALLY CLOSED) | 1 |
| 12 | 8" | PEERLESS | -- | TEST HEADER MANFOLD W/ (6) 2" HOSE VALVES | 1 |
| 13 | 1"-2" | FPPI | 06-845 | THREADED BALL VALVE | 2 |
| 14 | 1"-2" | WATTS | LF-600 | THREADED SILENT SPRING CHECK VALVE | 1 |
| 15 | 1"-2" | ANVIL | DI | 1-x1-x1 TEE & PLUG | 1 |
| 16 | 1" | FPPI | 06-844-00 | BALL VALVE, NIPPLE, & PLUG | 1 |
| 17 | -- | -- | -- | -- | -- |
| 18 | 8"x2" | PATRIOT | -- | FLANGE PIPE STAND | 0 |
| 19 | 8"x2" | PATRIOT | -- | PIPE STAND | 15 |
| 20 | 6"x2" | PATRIOT | -- | PIPE STAND | 0 |
| 21 | 8" | RELIABLE | BFG-300 | BUTTERFLY VALVE W/ BUILT IN TAMPER SWITCH | 6 |
| 22 | 8" | TYCO | CV-1F | GROOVED CHECK VALVE | 5 |
| 23 | 8" | POTTER | VSR-8 | WATERFLOW INDICATING SWITCH | 3 |
| 24 | 2" | AGF | 1011A | INSPECTOR'S TEST AND DRAIN VALVE W/PRESSURE RELIEF | 5 |
| 25 | 0-300 | ARGCO | -- | 0-300 PSI WATER GAUGE & 3-WAY SHUT OFF VALVE | 5 |
| 26 | 6" | RELIABLE | BFG-300 | BUTTERFLY VALVE W/ BUILT IN TAMPER SWITCH | 2 |
| 27 | 6" | TYCO | CV-1F | GROOVED CHECK VALVE | 3 |
| 28 | 6" | POTTER | VSR-6 | WATERFLOW INDICATING SWITCH | 2 |
| 29 | 8" | POTTER | MBA-8-24 | 24V ALARM BELL W/ WEATHER-PROOF BACKING BOX | 1 |
| 30 | 24 CT. | FPPI | 02-404-00 | FIRE SPRINKLER HEAD STORAGE BOX | 1 |

FIRE PUMP SETTINGS

FIRE PUMP RATING: 1,500 GPM @ 105 PSI
 PUMP CHURN: 125 PSI
 CITY STATIC PRESSURE: 48 PSI (ADJUSTED FOR ELEVATION)

JOCKEY PUMP START: (125 + 48 - 5) = 168 PSI
 JOCKEY PUMP STOP: (125 + 48) = 173 PSI
 FIRE PUMP START: (125 + 48 - 10) = 160 PSI
 FIRE PUMP STOP: = MANUAL STOP ONLY
 MAXIMUM FIRE PUMP CHURN PRESSURE: (125 + 50) = 176 PSI

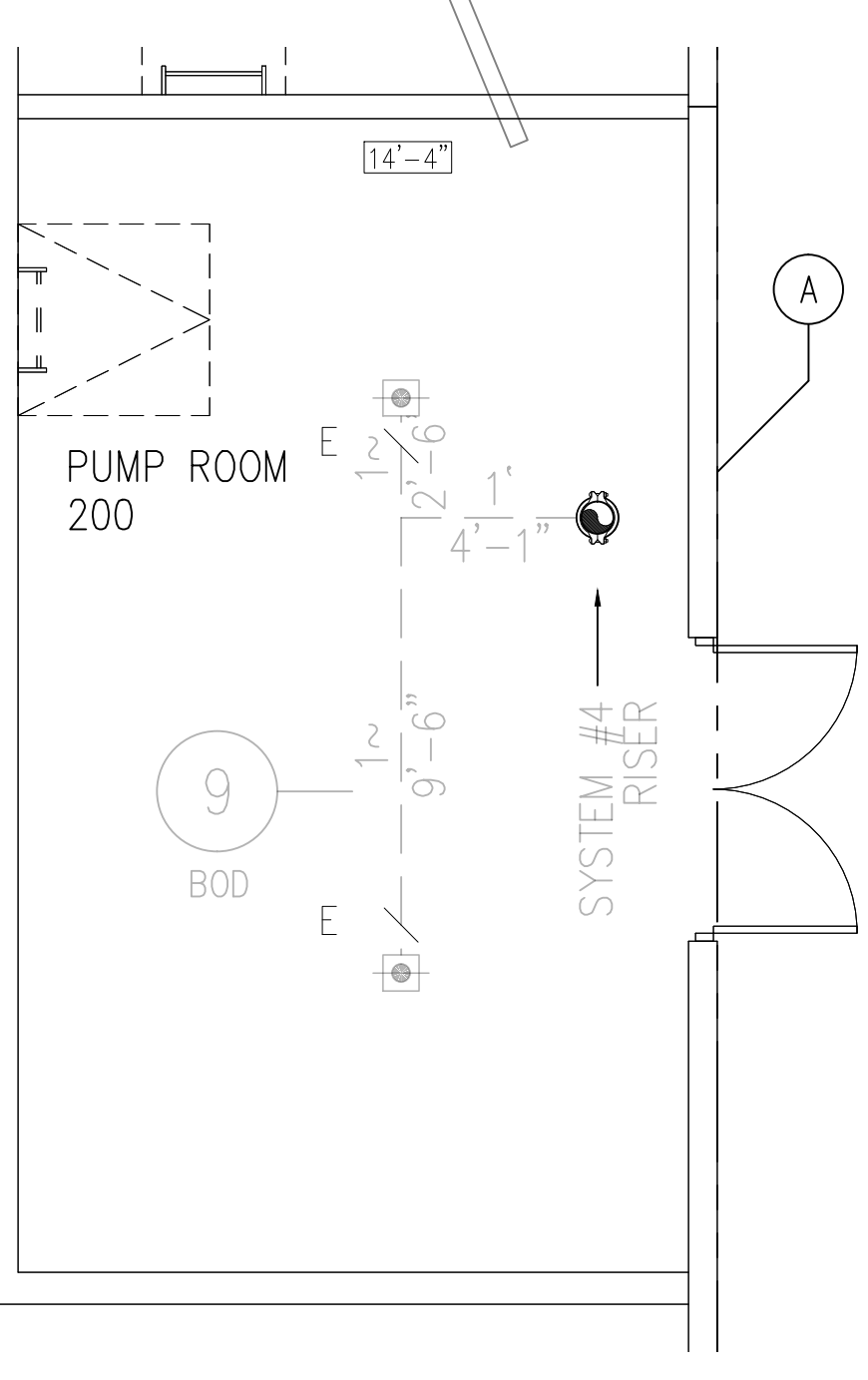
PUMP SETTINGS LISTED ABOVE ARE PRELIMINARY. FINAL SETTINGS MAY VARY TO ACCOMMODATE ACTUAL FIELD CONDITIONS.



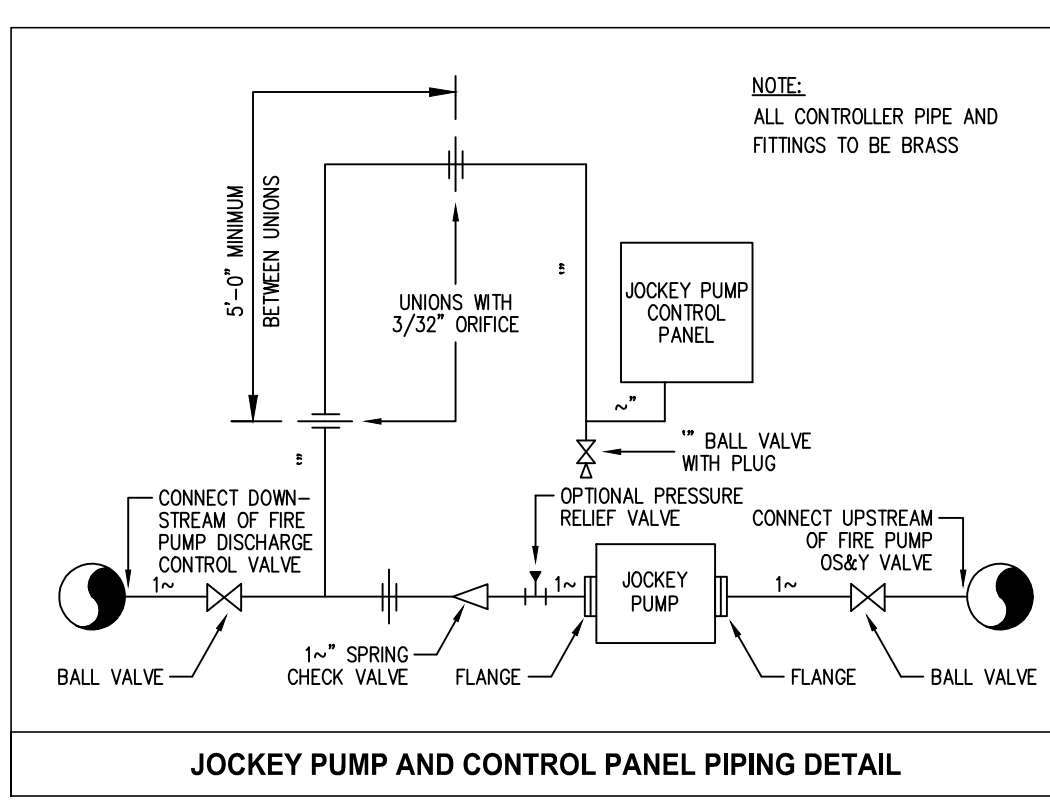
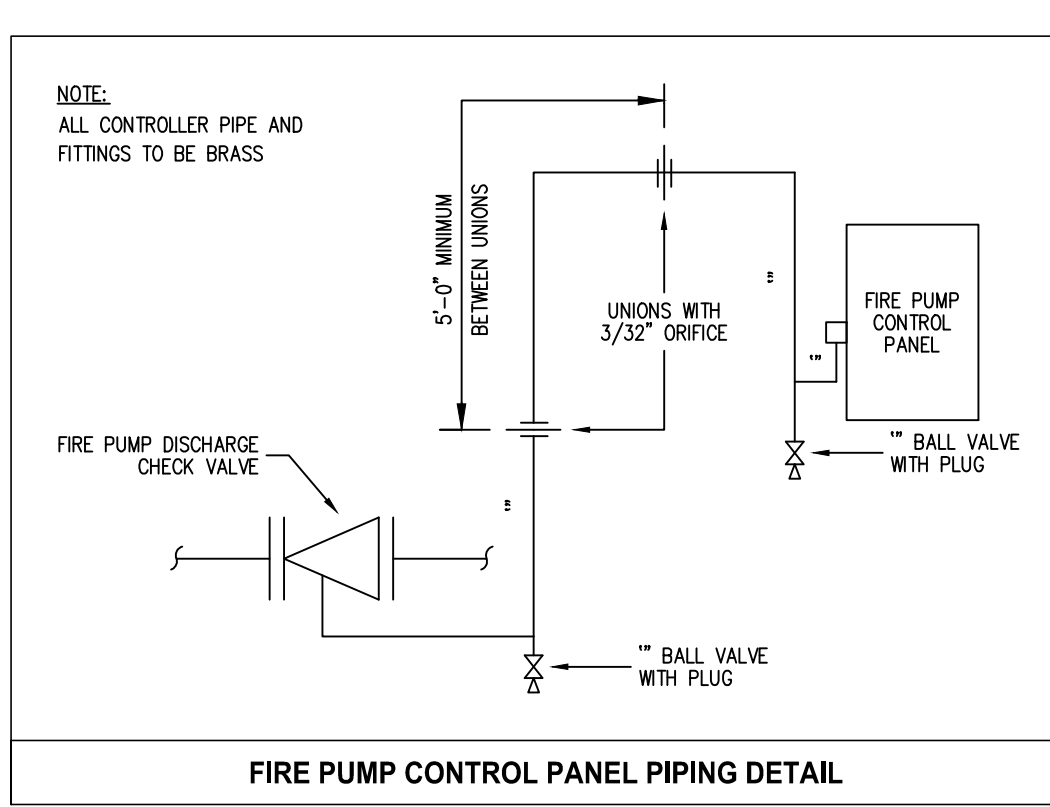
NOTE:
BRACING ATTACHED TO CONCRETE WALL AS FOLLOWS:
 8" LATERAL = SB-1
 8" LONGITUDINAL = SB-2
 6" LATERAL = SB-3
 6" LONGITUDINAL = SB-4

C RISER DETAIL
 FP-8 SCALE: "1"=1'-0"

FIRE PUMP LAYOUT
 SCALE: 1/2"=1'-0"



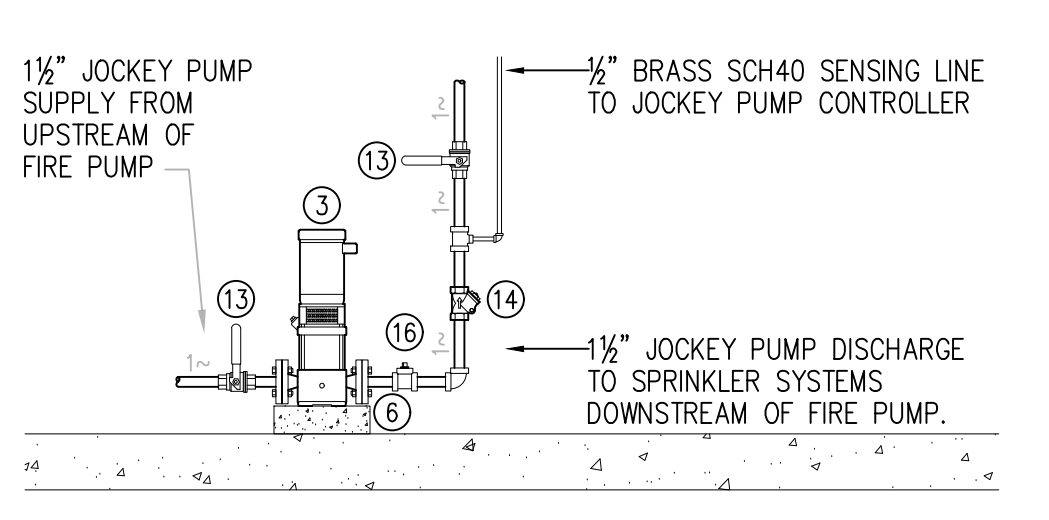
PUMP ROOM PIPING PLAN
 SCALE: "1"=1'-0"



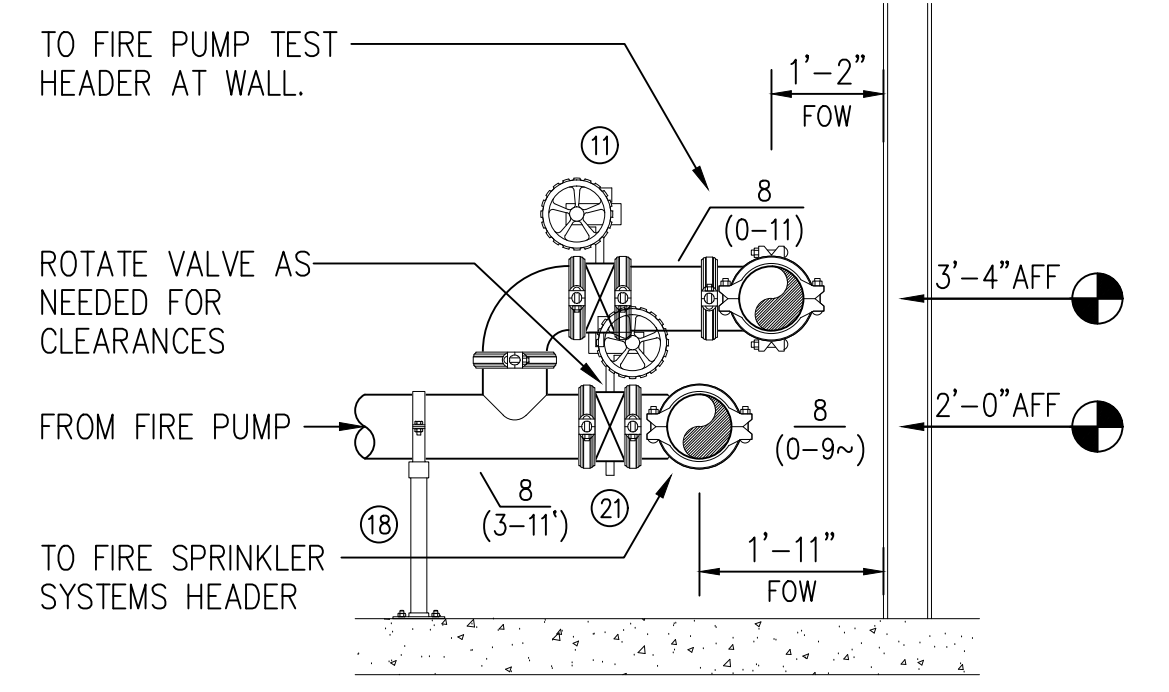
City of Puyallup Development & Permitting Services

ISSUED PERMIT

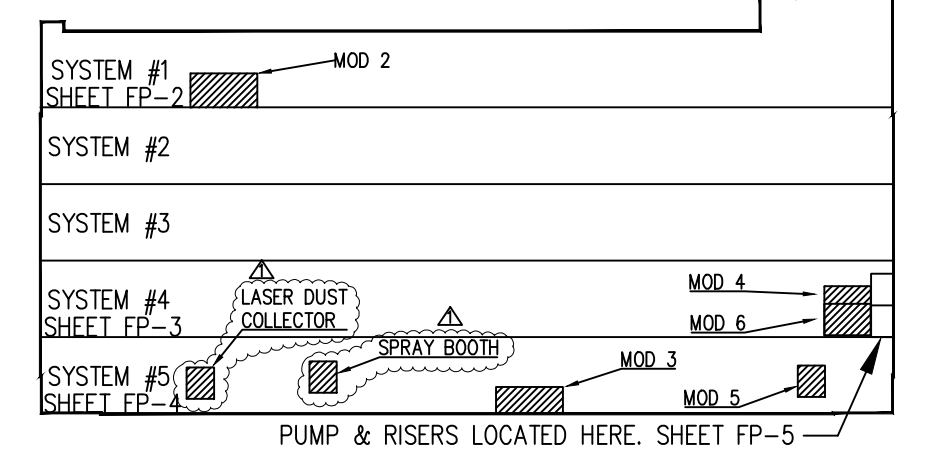
Building Planning
 Engineering Public Works
 Fire Traffic



A CONTROL VALVES
 FP-8 SCALE: "1"=1'-0"



B CONTROL VALVES
 FP-8 SCALE: "1"=1'-0"



KEY PLAN
 NO SCALE

| SPRINKLER HEAD LEGEND | | | | | |
|-----------------------|----------|--------|------|------------|-----------------------------|
| SYM. | MANUF. | MODEL | SN | TYPE | TEMP. RATING |
| 1 | RELIABLE | F1R LO | R032 | LD PENDENT | D 3/4" 8.0K BRONZE N/A 200° |
| TOTAL 2 | | | | | |

| STATE CERTIFICATION | | FITTING LEGEND | | HANGER LEGEND | |
|--|--|---|---|---|--|
| CERTIFICATE OF COMPETENCY WASHINGTON STATE FIRE PROTECTION SPRINKLER SYSTEMS Pietro Demitro S54-0610-C Level 3 Patriot Fire Protection, Inc. PATRIFP090FC 6/19/2023 | | P PIPE-O-LET SN GROOVED SHAPED NIPPLE TSN THREADED SHAPED NIPPLE ADN ADJUSTABLE DROP NIPPLE FLG FLANGE WC WELDING COUPLING S SPRINKLER 1" CENTER LINE OF PIPE IN INCHES 2 - WAY EARTHQUAKE BRACE 4 - WAY EARTHQUAKE BRACE | A "U" HOOK B COACH SCREW ROD D BM CLAMP W/ "STRAP" E EYELET F FLUSH SHELL G CEILING FLANGE H SIDE BEAM BRACKET K SHORT CLIP M ALL THREAD ROD N TOGGLE NUT P POWDER DRIVEN STUD R SAMMY XPRESS T PIPE SPIKE U TRAPEZE HANGER V WALL BRACKET HANGER | QUALITY CONTROL BY: _____ DATE: _____ APPROVED FOR FABRICATION BY: _____ DATE: _____ | |

| REVISIONS | | | |
|-----------|----------|-----|---|
| NO. | DATE | BY | DESCRIPTION |
| 1 | 06/19/23 | DJS | UPDATED AREA OF COVERAGE PER FPE REPORT |

| DESIGN CRITERIA | |
|---|--|
| FIRE PUMP DESIGNED IN ACCORDANCE WITH NFPA 20 & 13 | |
| PIPE NOTES 1. WELDED/GROOVED MAIN PIPING TO BE SCH. 10 BLACK PIPE 2. WELDED/GROOVED BRANCH LINE PIPING TO BE EDDY FLOW PIPE 3. THREADED PIPING TO BE SCH. 40 BLACK PIPE. | |

CONTRACT WITH: **POE CONSTRUCTION**
 1515 W VALLEY HWY N, SUITE 103
 AUBURN, WA 98001
 CLAY JOHNSON: 253-833-2400

PROJECT NAME: **RED DOT T1**
 2504 EAST MAIN
 PUYALLUP, WA 98372

DESIGNER: **DEREK STRICKLAND**
 DATE: 05-19-2023
 JOB NO.: 11-2404

SHEET: **5 OF 5**

PATRIOT FIRE PROTECTION, INC.
 27107 70TH AVENUE EAST
 TACOMA, WA 98424
 TEL: (253) 926-2280
 FAX: (253) 922-6150

FP-5