

GENERAL NOTES

- 1. ALL NOTES INCLUDED HEREIN ARE MADE PART OF EACH AND ALL MECHANICAL, ELECTRICAL AND PLUMBING SECTIONS OF WORK.
2. REFER TO LANDLORD'S SPECIFICATIONS AND TENANT DESIGN CRITERIA FOR NECESSARY INFORMATION AND COORDINATION WITH OTHER TRADES.
3. THE ABBREVIATION BBW WHEREVER IT APPEARS IN THE DRAWINGS, SHALL REFER TO "BATH & BODY WORKS, INC."...

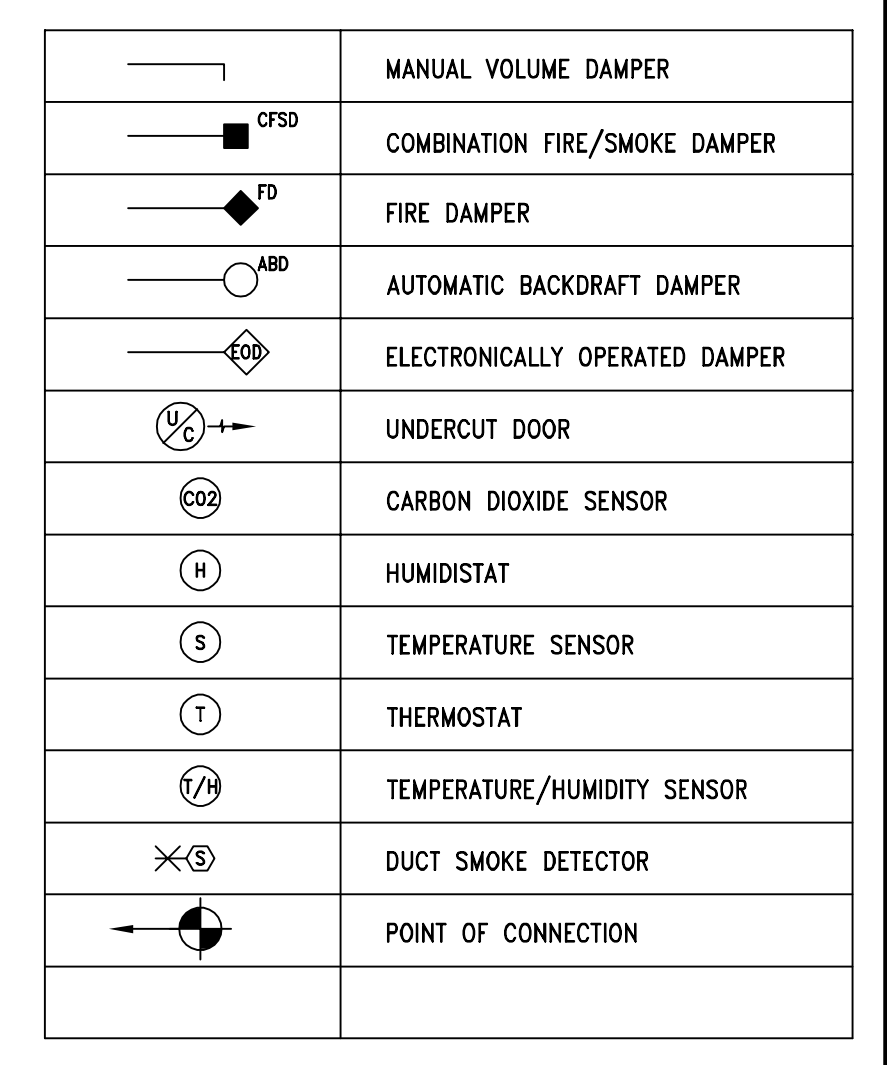
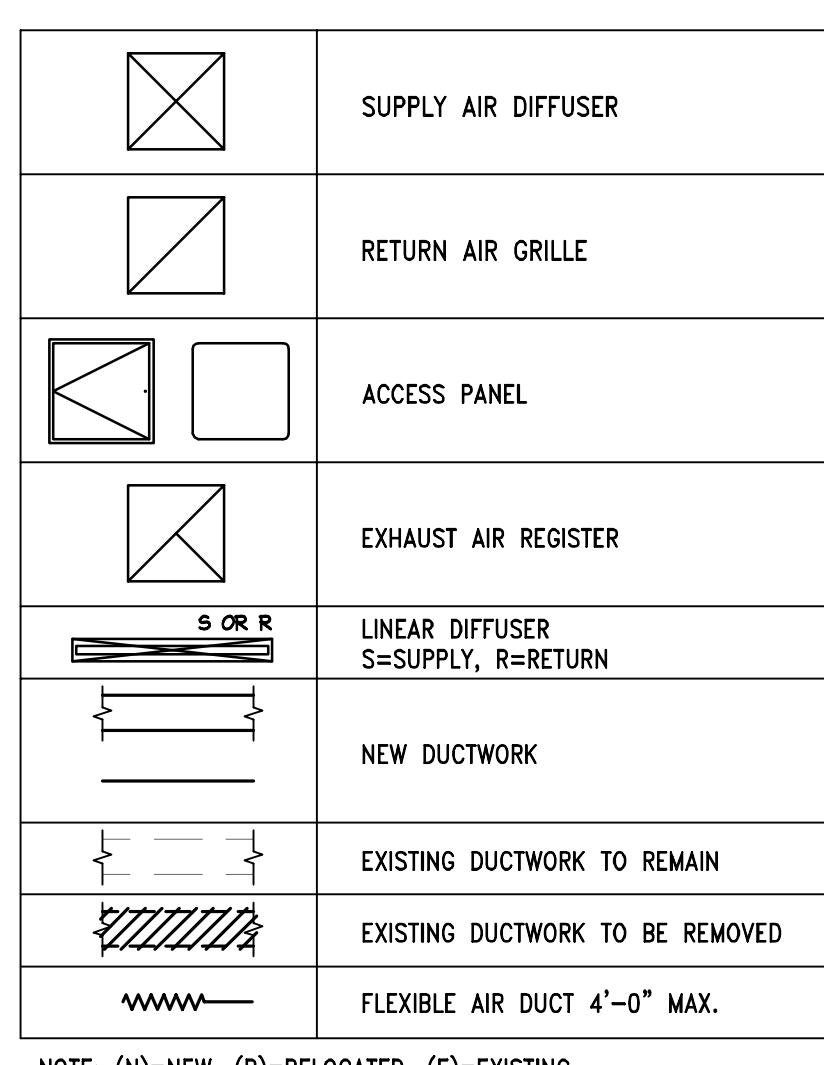
HVAC GENERAL NOTES

- 1. THESE PLANS MAY BE USED FOR CONSTRUCTION ONLY AFTER APPROVAL IS OBTAINED FROM THE BUILDING DEPARTMENT MECHANICAL PLAN CHECK DIVISION AND THAT DIVISION'S STAMPED APPROVAL AND AUTHORIZED SIGNATURE APPEAR ON THE PLANS.
2. COORDINATE ALL WORK WITH ALL TRADES INCLUDED BUT NOT LIMITED TO ELECTRICAL, PLUMBING, FIRE PROTECTION AND STRUCTURAL CONTRACTORS...

- 10. UPON COMPLETION OF THE WORK, CONTRACTOR SHALL VERIFY THE PROPER WORKING ORDER OF THE SYSTEM(S) AND MAKE ANY ADJUSTMENTS AS REQUIRED.
11. PROVIDE FILTER CHANGES THROUGHOUT CONSTRUCTION AS REQUIRED FOR ALL HVAC EQUIPMENT. PROVIDE FILTER CHANGES AT LEAST TWICE MONTHLY ONCE STARTED, PRIOR TO TEST AND BALANCE, AND LASTLY, PRIOR TO MERCHANTISING...

- 18. MECHANICAL CONTRACTOR SHALL INSTALL TEMPERATURE SENSORS AND AS SHOWN ON THE PLAN (VERIFY LOCAL CODES. IF PLAN LOCATION IS NOT ACCEPTABLE, IMMEDIATELY CONTACT BBW PROJECT MANAGER FOR DIRECTION.)
19. UPON COMPLETION OF THE WORK, THE CONTRACTOR SHALL FULLY PRESSURE CHECK AND CHARGE ALL REFRIGERANT SYSTEMS (IF REQUIRED).

ABBREVIATIONS - MECHANICAL
Table listing abbreviations such as AHBC, AFF, AHU, APD, ASHRAE, BDD, BHP, BLDG, BOD, BOP, BTUH, BBW, CAP, CD, CFM, CHWR, CHWS, CO2, CONTR, COP, CWR, CWS, DB, DEG, DIA, DX, EA, EAG, SAT, EC, EER, EFF, EOD, ESP, SVT, FCU, FLA, FLEX, and their corresponding descriptions.



NOTE: (N)=NEW, (R)=RELOCATED, (E)=EXISTING

AIR HANDLING UNIT SCHEDULE (SPLIT DX)
Table with columns for MARK (AHU-#), MODEL, AIR FLOW (CFM), OA FLOW / MIN. OA FLOW (CFM)*, EXH. SP. (IN W.C.), DX COOLING COIL, ELECTRIC HEAT, and ACCESSORIES.

CONDENSING UNIT SCHEDULE
Table with columns for MARK (CU-#), MODEL / SEER (EER), AMBIENT OA TEMP (DEG F DB), TOTAL CAPACITY (BTU/HR), PHYSICAL DATA, and ACCESSORIES.

GRILLE, REGISTER, AND DIFFUSER SCHEDULE
Table with columns for MARK, MANUFACTURER, MODEL, NECK SIZE (L*X*W), FRAME SIZE (L*X*W), FRAME TYPE, FINISH*, NOISE CRITERIA LEVEL, ACCESSORIES, and NOTES.

MECHANICAL EQUIPMENT SCHEDULES
Table with columns for NTS and J, listing equipment like AHU, CU, GRILLE, REGISTER, and DIFFUSER with their respective schedules.

PRMH20230873
City of Puyallup Development & Permitting Services ISSUED PERMIT
Building Planning Engineering Public Works Fire Traffic

Bath & Body Works
Three Limited Parkway - Columbus, Ohio 43290
Telephone: 614.445.7000 Fax: 614.415.7349

NATIONAL ACCOUNTS HVAC SUPPLIER GENERAL NOTES
HVAC EQUIPMENT NOTED HAS BEEN PREPURCHASED BY BATH & BODY WORKS, INC. WITHIN THE FIRST WEEK OF CONSTRUCTION, THE GENERAL CONTRACTOR OR THEIR MECHANICAL SUBCONTRACTOR SHALL NOTIFY SUPPLIER VIA EMAIL.

TRANE CONTACT INFORMATION
JODY SOWERS TRANE TECHNICAL SUPPORT, PRIMARY
ROLLAND SCOTT TRANE TECHNICAL SUPPORT, SECONDARY
JOHN D'AGOSTINO EQUIPMENT MANAGER AND HVAC COMMISSIONING
SCOTT DAVIS PROJECT MANAGER AND HVAC COMMISSIONING

NATIONAL ACCOUNTS INFORMATION
DRAWING NUMBER: M01.01

TBA Thorson • Baker + Associates CONSULTING ENGINEERS
3030 West Stevedore Road Richfield, Ohio 44286

104.01.0737.01
BATH & BODY WORKS SOUTH HILL MALL - REMOTE STORAGE

REVISIONS:
REV 1 - NO COMMENTS 09/19/2023
REV 2 - NO COMMENTS 06/09/2023

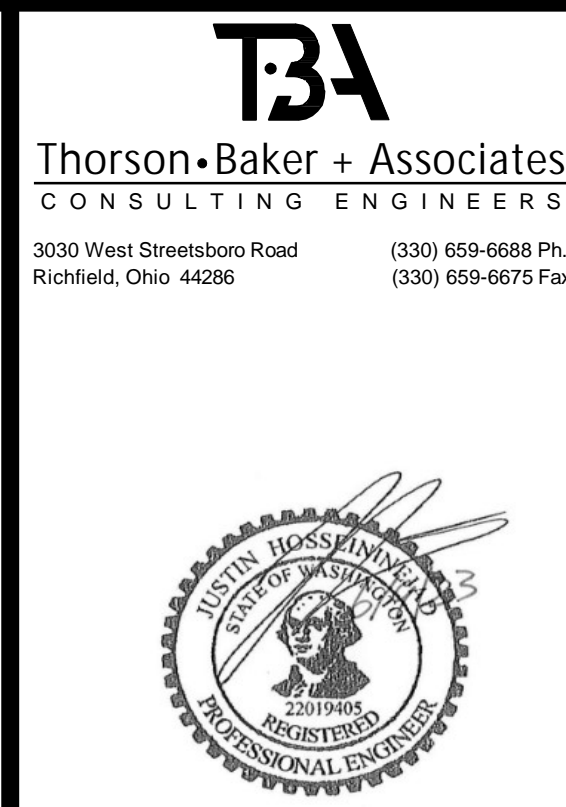
DATE ISSUED: 12/19/2022
DESIGNED BY: MAR
DRAWN BY: TBA
CHECKED BY: NJK

MECHANICAL NOTES AND SCHEDULES
DRAWING NUMBER: M01.01

① INSTALL FACTORY PROVIDED CONTROLLER AT 52" AFF IN LOCATION SHOWN.
 ② TENANT CONTRACTOR SHALL FIELD VERIFY EXACT LOCATION OF ALL HVAC EQUIPMENT. COORDINATE WITH LANDLORD ENGINEER PRIOR TO BID AND CONSTRUCTION.
 ③ EXTEND REFRIGERANT LINES FROM AIR COOLED CONDENSING UNIT TO THE AIR HANDLING UNIT'S DX COIL AND MAKE FINAL CONNECTIONS. REFRIGERANT LINES SHALL BE SIZED PER MANUFACTURER'S RECOMMENDATIONS. PROVIDE INSULATION, VALVING, OIL TRAPS, DRYERS, SIGHT GLASSES AND ACCESSORIES AS REQUIRED FOR A COMPLETE AND OPERABLE SYSTEM. ROOF PENETRATIONS TO BE COORDINATED WITH THE LANDLORD AND ALL ROOF WORK TO BE DONE BY THE LANDLORD'S ROOFING CONTRACTOR AT THE GENERAL CONTRACTOR'S EXPENSE UNLESS NOTED OTHERWISE.

City of Puyallup
 Development & Permitting Services
 ISSUED PERMIT
 Building Planning
 Engineering Public Works
 PRM-H20230673

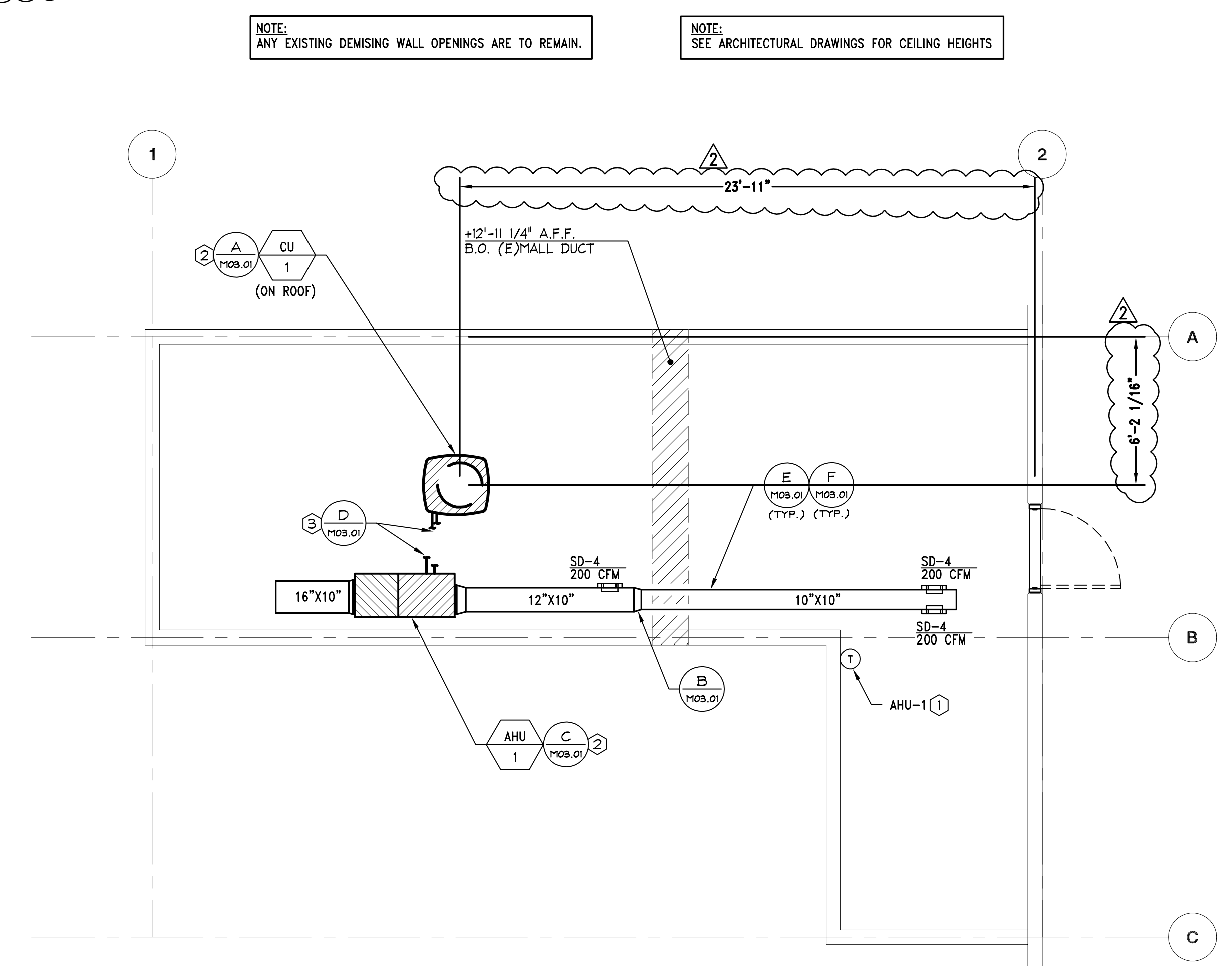
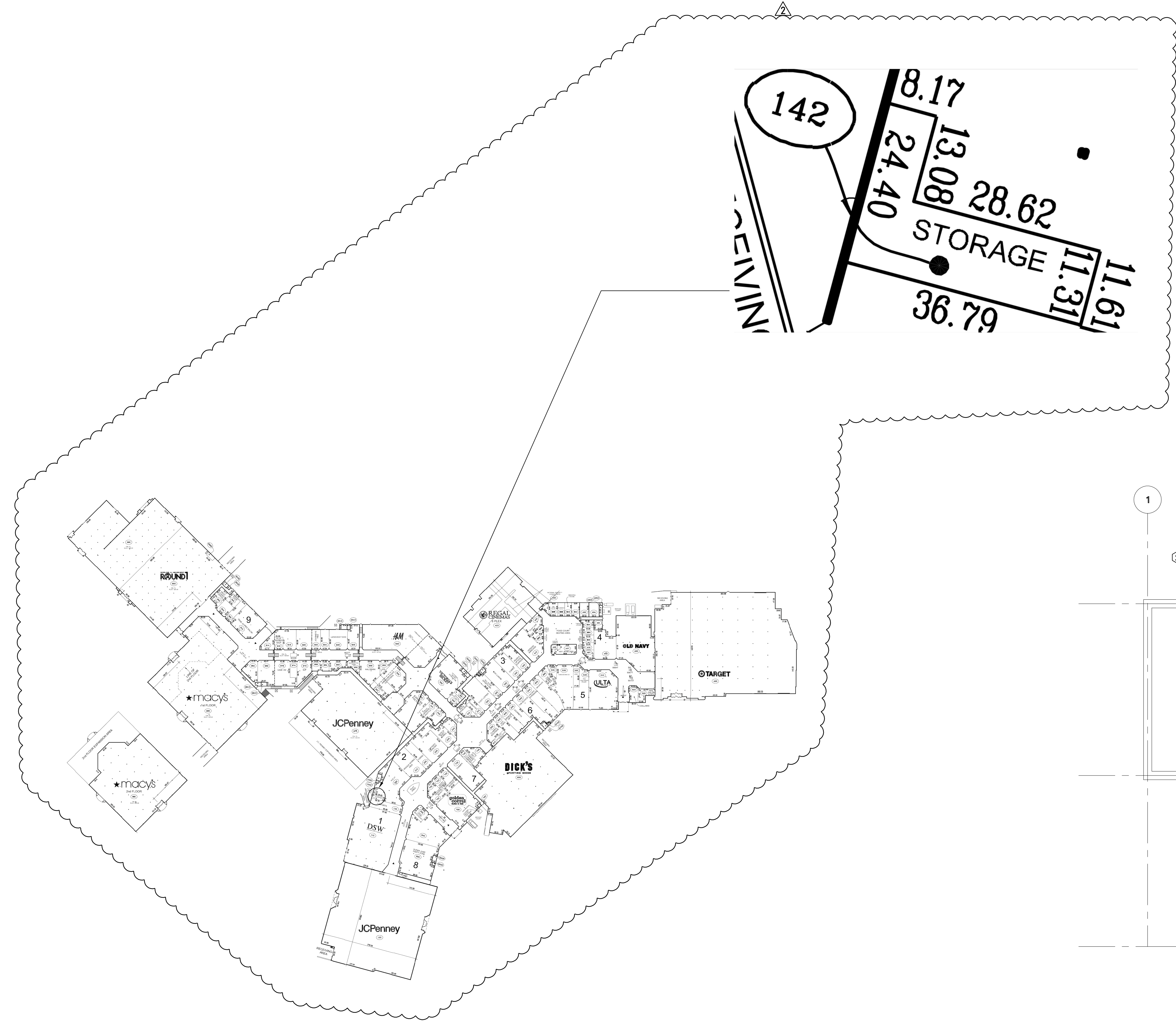
PROVIDE REFRIGERANT LINES MANUFACTURER'S SPECIFICATIONS ON SITE FOR INSTALLATION AND INSPECTIONS.



Bath & Body Works
 Three Limited Parkway - Columbus, Ohio 43230
 Telephone: 614.415.7000 · Fax: 614.415.7349

MECHANICAL PLAN KEYNOTES

NTS	D
	09/20/19



NOTE: ANY EXISTING DEMISING WALL OPENINGS ARE TO REMAIN.
 NOTE: SEE ARCHITECTURAL DRAWINGS FOR CEILING HEIGHTS



"VERIFY ALL FIELD CONDITIONS PRIOR TO BID"

MECHANICAL PLAN

1/4" = 1'-0"
 A
 03/31/17

PROJECT INFORMATION:
104.01.0737.01
BATH & BODY WORKS
SOUTH HILL MALL - REMOTE STORAGE
 SPACE NO. 235
 3500 S. MEWEN STREET
 PUYALLUP, WA 98373

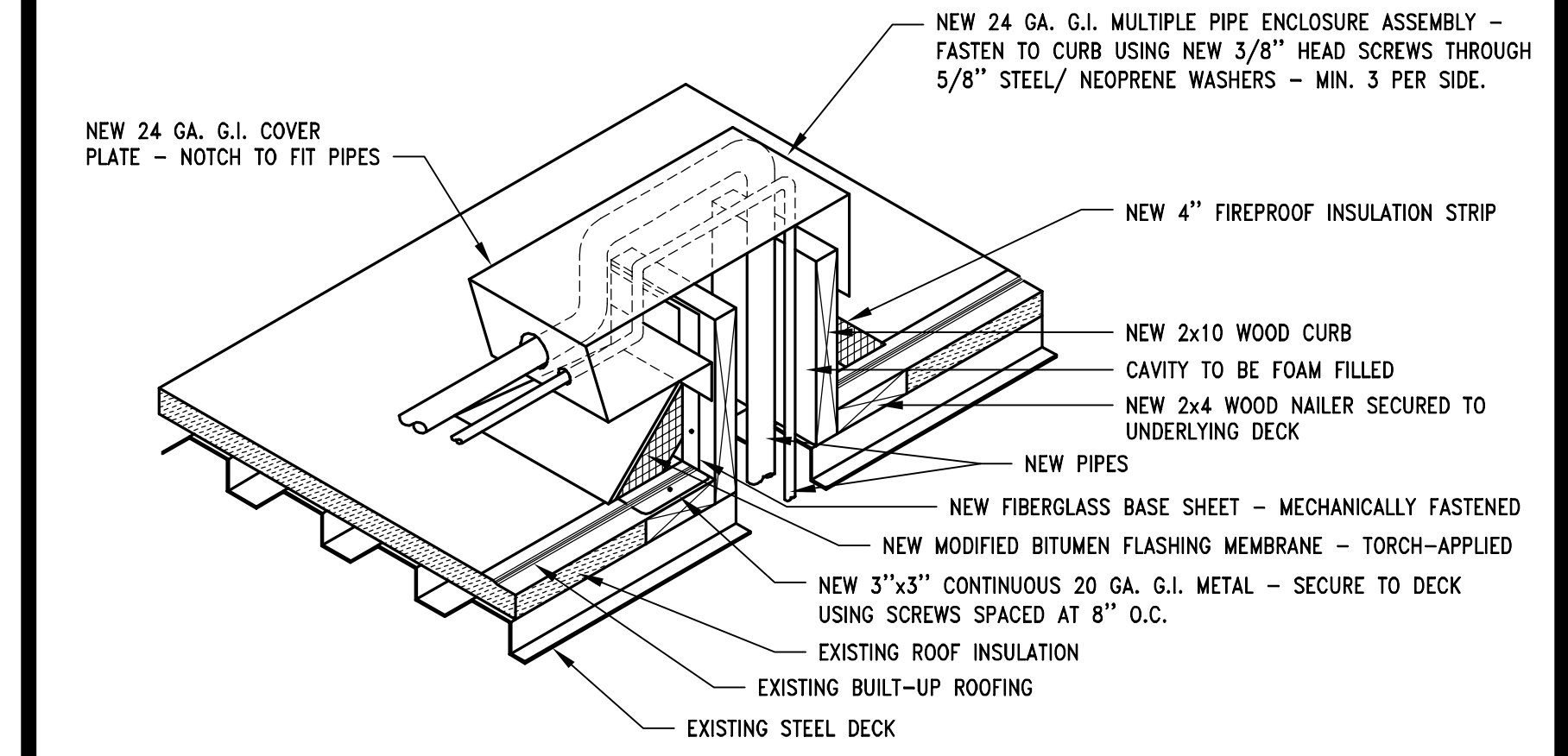
SCOPE: FULL REMODEL
 DESIGN TYPE: ES/WBC 2021
 BBW PROJECT #: 00116082 / A/E PROJECT #:

DATE ISSUED: 12/19/2022
 DESIGNED BY: MAR
 DRAWN BY: TBA
 CHECKED BY: NJK

MECHANICAL PLAN
 DRAWING NUMBER:
M02.01

PRMH20230873

City of Puyallup Development & Permitting Services ISSUED PERMIT	
Building	Planning
Engineering	Public Works
Fire	Traffic

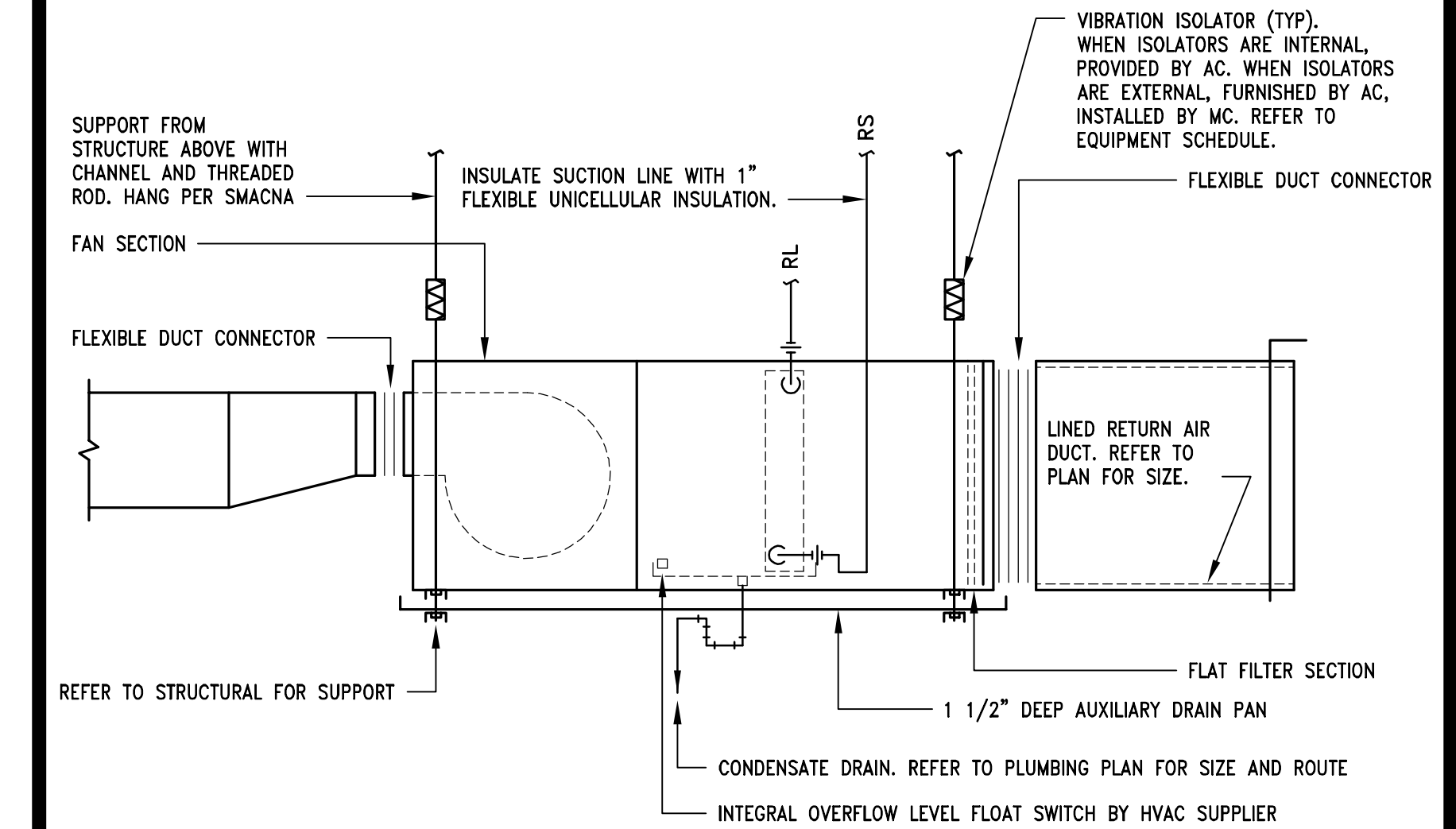


NOTE:
ALL PIPES ENTERING THE PIPE ENCLOSURE ASSEMBLY SHALL BE SLOPED UPWARD AS THEY ENTER THE FLASHING SO THAT WATER WILL NOT BE ABLE TO RUN INTO THE BUILDING.

PIPE THROUGH ROOF DETAIL

NTS

D
00D-M0301-J00-PTRD 08/26/15

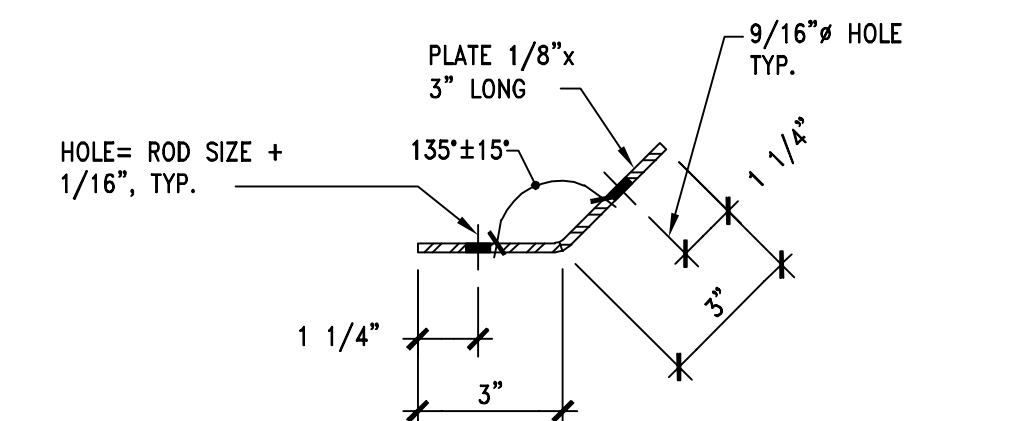


NOTES:
1) REFER TO PIPING DETAILS FOR ADDITIONAL REQUIREMENTS.
2) REFER TO PLUMBING DRAWINGS FOR CONDENSATE PAN AND PIPE ROUTING REQUIREMENTS.

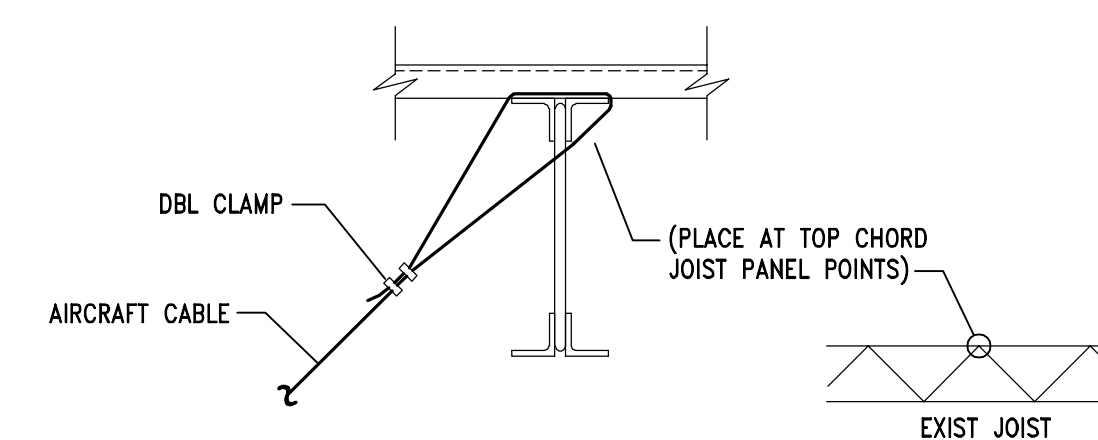
SPLIT DX AHU MOUNTING DETAIL

NTS

C
00D-M0301-H04-UNIT 09/15/22



2 SEISMIC CABLE CONN.



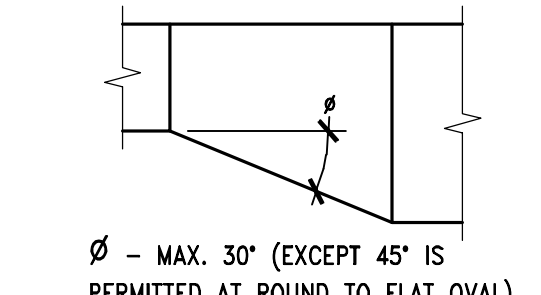
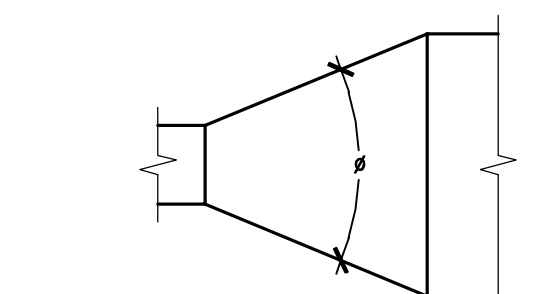
1 SEISMIC CABLE CONN.

SEISMIC CABLE DETAILS

NTS

F

Duct Main - Transitions

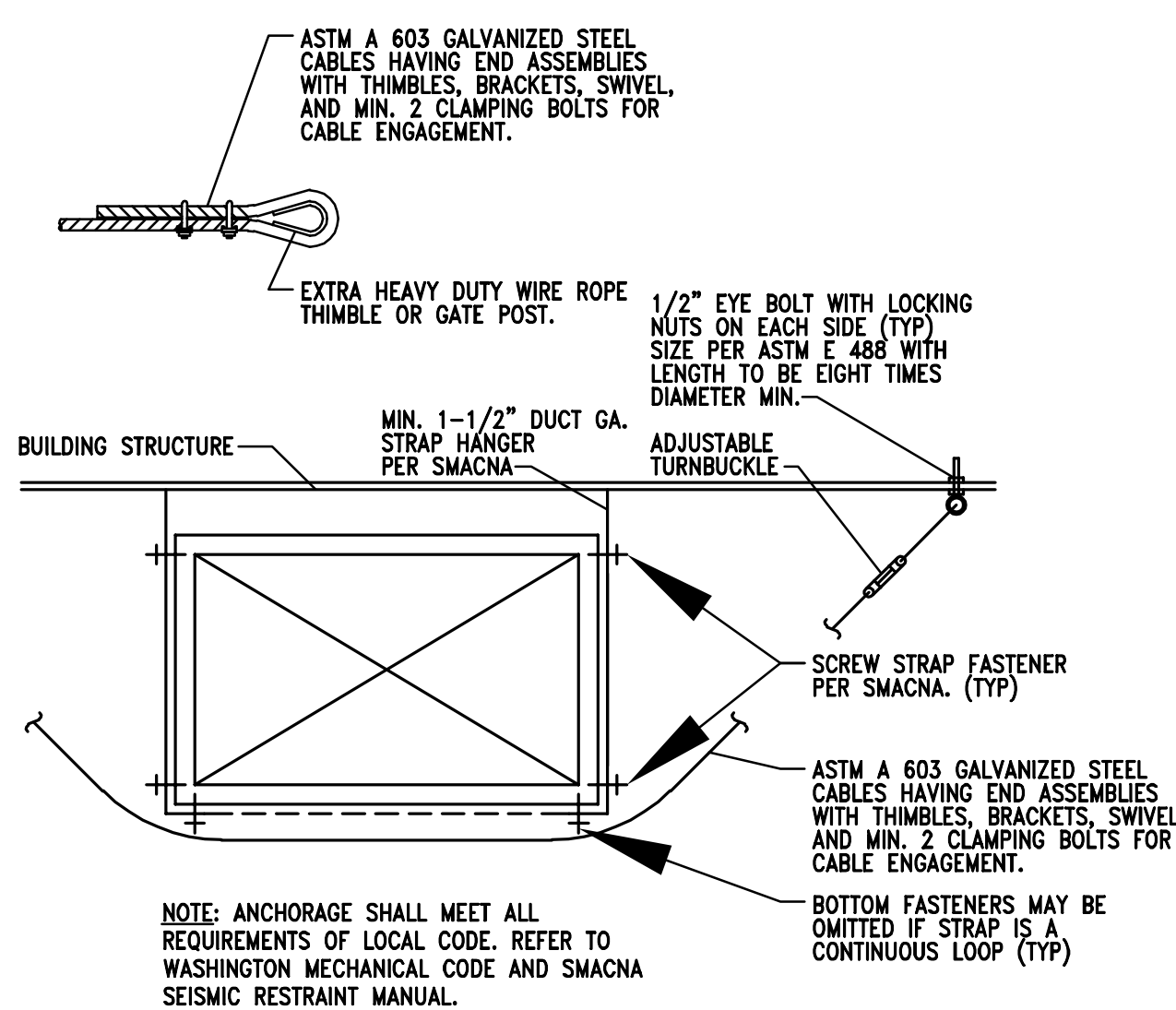


DUCT DETAILS

NOTE: USE PLAN AS GUIDE TO FITTING TYPE.

NTS

B
00D-M0301-G00-DUCT 04/02/18

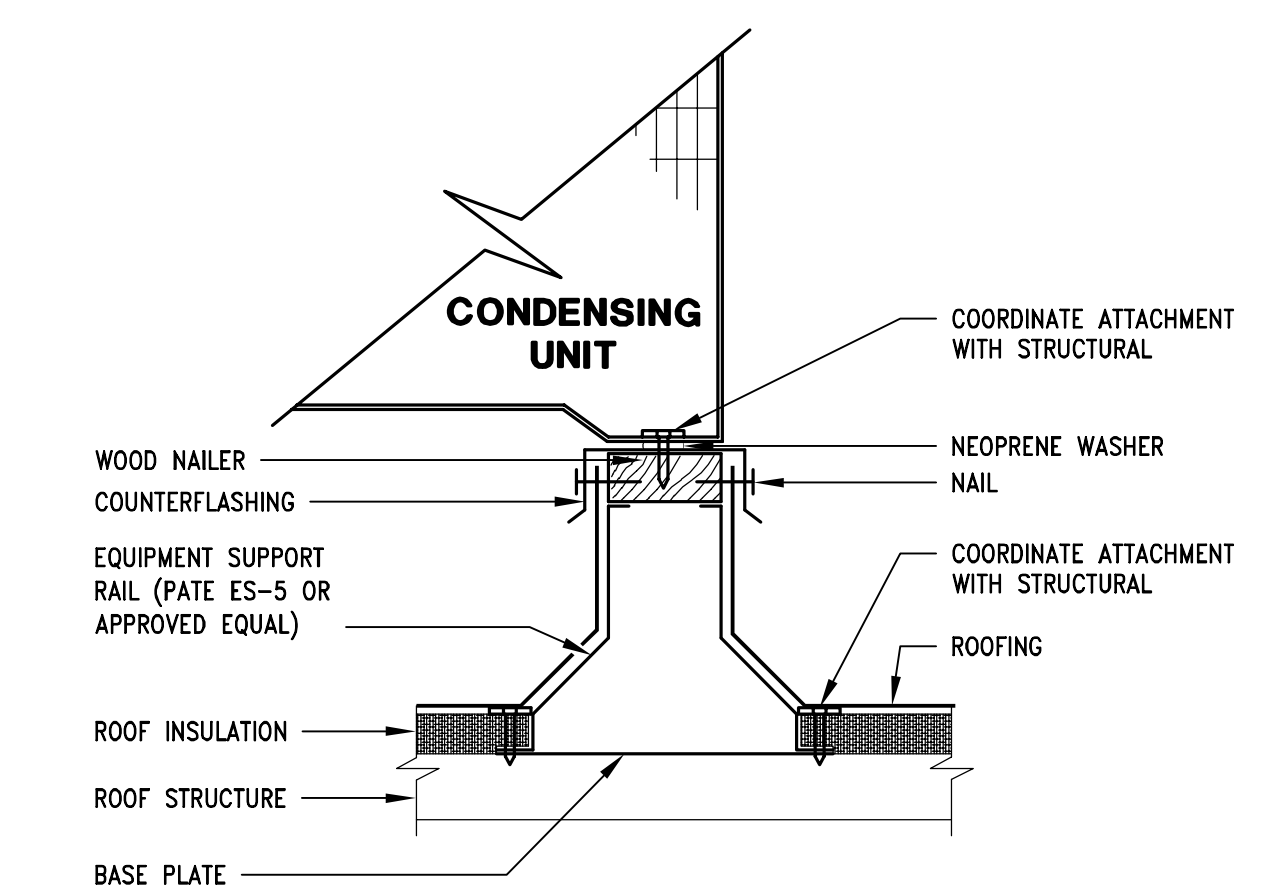


NOTE: ANCHORAGE SHALL MEET ALL REQUIREMENTS OF LOCAL CODE. REFER TO WASHINGTON MECHANICAL CODE AND SMACNA SEISMIC RESTRAINT MANUAL.

MECHANICAL DUCT ANCHORAGE DETAIL

NTS

E

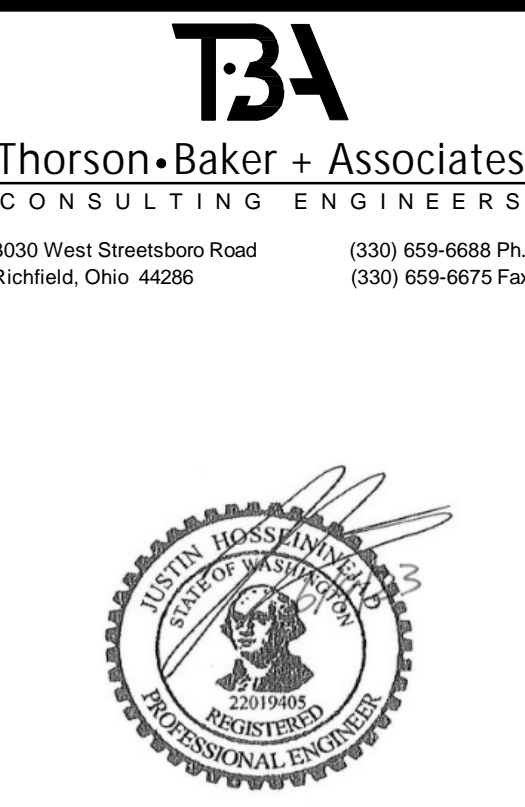


NOTE: PROVIDE RUBBER FLOOR MATS AROUND ALL ROOFTOP EQUIPMENT.

MOUNTING DETAIL FOR CONDENSING UNIT

NTS

A
00D-M0301-M00-UNIT 09/15/22



Bath & Body Works
Three Limited Parkway - Columbus, Ohio 43230
Telephone: 614.415.7000 · Fax: 614.415.7349

104.01.0737.01
BATH & BODY WORKS
SOUTH HILL MALL - REMOTE STORAGE
SPACE NO. 235
3500 S. MERVIN STREET
POTTLALUP, WA 98373
SIS, PKG. 2
23150.00
20221012.0
FULL REMODEL | PACKAGE:
BBW ES/WBC 2021 | GENERATION:
00116082 | A/E PROJECT #:

PROJECT INFORMATION:
BATH & BODY WORKS
SOUTH HILL MALL - REMOTE STORAGE
SPACE NO. 235
3500 S. MERVIN STREET
POTTLALUP, WA 98373
SIS, PKG. 2
23150.00
20221012.0
FULL REMODEL | PACKAGE:
BBW ES/WBC 2021 | GENERATION:
00116082 | A/E PROJECT #:

REVISIONS:	DATE:
REV 1 - NO COMMENTS	09/18/2023
REV 2 - NO COMMENTS	06/06/2023

DATE ISSUED: 12/19/2022
DESIGNED BY: MAR
DRAWN BY: TBA
CHECKED BY: NJK

MECHANICAL DETAILS

DRAWING NUMBER:
M03.01



Bath & Body Works
Three Limited Parkway - Columbus, Ohio 43290
Telephone: 614.415.7000 • Fax: 614.415.7349

104.01.0737.01
BATH & BODY WORKS
SOUTH HILL MALL - REMOTE STORAGE
SPACE NO. 235
3500 S. MERIDIAN STREET
PUYALLUP, WA 98373

PROJECT INFORMATION:
REVISIONS:
DATE ISSUED: 12/19/2022
DESIGNED BY: MAR
DRAWN BY: TBA
CHECKED BY: NJK

REVISIONS:
REV 1 - NO COMMENTS 09/18/2023
REV 2 - NO COMMENTS 06/06/2023

DATE ISSUED: 12/19/2022
DESIGNED BY: MAR
DRAWN BY: TBA
CHECKED BY: NJK

WSEC REQUIREMENTS
DRAWING NUMBER: M06.01

PRMH20230873

City of Puyallup
Development & Permitting Services
ISSUED PERMIT
Building Planning
Engineering Public Works
Fire Traffic

MECHANICAL COMPLIANCE SUMMARY			
2018 WSEC Compliance Forms for Commercial Buildings including Group R2, R3 & R4 over 3 stories and all R1 ... Administered by ©2022 NEEA. All rights reserved.			
Project Title		Bath & Body Works South Hill Remote Storage - 2018 WSEC	
Project Address		3500 S. Meridian Street Space 235 Puyallup, WA 98373	
Applicant Name		Chris Beardsley	
Applicant Phone		330-659-6688	
Applicant Email		Cbeardsley@tbaconsulting.com	
For questions about this report, contact WSEC Commercial Technical Support at 360-539-5300 or via email at com.techsupport@wsecenergycodes.com			
General Occupancy		Warehouse, General Storage	
General Project Type		Alteration	
Mechanical Project Description		Small split system to cool the remote storage	
Mechanical Compliance Scope and Method		Alteration	
Additional Efficiency Credits Included (ALE)		None	
Does building include occupancy classifications requiring DOAS?		No	
Does project include DOAS equipment?		No	
Based on project scope do TSPR requirements apply?		No	
Scope & Space Conditioning		ALTERATION - SINGLE ZONE SYSTEMS & EQUIPMENT	
Compliance Verification		COMPLIES	
Single Zone Air Systems Category - Air handling unit, hydronic			
Air System Summary Information			
System/Equip ID	Supply Airflow Control	Ventilation Standard	Ventilation CFM
AHU,CLU-1	Constant volume	Unoccupied, no ventilation requirement	600
Air System & Equipment - Cooling			
System/Equip ID	Cooling System/Equip Type	Specific Type	Cooling Capacity per Ton (Btu/h)
AHU,CLU-1	Air conditioner, air cooled	Split system DX	19,000
Air System & Equipment Details			
System/Equip ID	Area(s) Served	Location In Project Documents - Plan Detail #	
AHU,CLU-1	Remote Storage	R201	
Hearing Section Auxiliary Heating Type: Electric resistance for Name1 Economic Compliance Method: Economizer not required			
WSEC Equip Efficiency Reference Table - Cooling Table C403.3.3.1(A) - Unitary Air Conditioners & Condensing Units			

Mechanical Requirements List, pg 1 of 25

Applies	Code Section	Code Provision	Compliance Information Required In Permit Documentation	Location in Documents	Building Department Notes
<p>SCOPE</p> <p>NA C103.1 Construction documents - General For a shell & core or tenant space (first build-out project), indicate if there is no mechanical scope included in the project.</p> <p>YES C103.1 Construction documents - General For an alteration project, indicate if there is no mechanical scope included in the project.</p> <p>PERFORMANCE CRITERIA & SYSTEM DESIGN</p> <p>YES C403.1 Exempt process equipment Identify equipment used by manufacturing, industrial or commercial processes that are not for space conditioning or maintaining comfort and amenities for occupants; identify provisions applicable to this equipment per C403.1 exception.</p> <p>NA C403.1.1 HVAC total system performance ratio (TSPR) For systems serving office, retail, library or education occupancies, provide a TSPR report that demonstrates the proposed design ratio is equal to or greater than the standard reference design ratio, or exception applied.</p> <p>YES C403.1.2 Calculation of heating and cooling loads Provide load calculations performed per ASHRAE Std 183 or equivalent, using design parameters per C102 and Appendix C; include load adjustments to account for energy recovery.</p> <p>YES C403.1.3 Data centers Provide documentation that demonstrates that data center systems comply with the maximum allowed Design MLC and Annualized MLC per ASHRAE 90.4 with 2018 WSEC adjustments per climate zone.</p> <p>NO C403.2.1, C403.4.2.2 Zone isolation If there are HVAC zones that are intended to be occupied non-simultaneously, identify isolation zone areas on plans; if multiple zones intended to be occupied simultaneously will be combined into a single isolation zone, include on plans that the combined zone area does not exceed 25,000 sq ft and does not include more than one floor; or exception applied.</p> <p>NO Indicate locations of associated zone isolation dampers in HVAC distribution system.</p> <p>YES Refer to HVAC Controls section in Requirements List for applicable automatic setback and shutdown controls requirements.</p> <p>EQUIPMENT SELECTION & PERFORMANCE</p>					

Mechanical Requirements List, pg 2 of 25

YES	C403.3.1	Equipment and system sizing	Indicate that output capacities of heating and cooling equipment and systems are no greater than the smallest available equipment size that exceeds the calculated loads; note exceptions applied.		
YES	C403.3.2, C403.9.1	HVAC equipment performance requirements (efficiency)	Provide equipment schedules on plans and in WSEC mechanical equipment compliance reports; indicate equipment type, calculated loads, capacity, rated and WSEC minimum efficiencies for all heating and cooling equipment; include supply and ventilation air flows and operating hours for all air systems; identify heating and cooling equipment that does not have a corresponding WSEC minimum efficiency (manufacturer rated).		
YES	C405.8	Electric motor efficiency	List all motors ≥ 1/2 hp (that are not integral to a rated piece of equipment) in the mechanical or electrical equipment schedules on plans; indicate motor type and applicable efficiency table, hp, rpm, number of poles and rated efficiency, or exception applied.		
NO	C403.3.2	Gas and oil-fired forced air furnace and unit heaters	For forced air furnaces with capacity ≥ 225,000 Btu/h and all unit heaters, indicate in equipment schedule intermittent ignition or ID, the or draft damper, and rated jacket loss.		
NO	C403.3.2.4	Packaged electric heating / cooling equipment	Verify all packaged electric equipment with > 6,000 Btu/h cooling capacity and any amount of heating is a heat pump; include in equipment schedule.		
NO	C403.3.3	Hot gas bypass limitation for DX cooling equipment	For cooling equipment with hot gas bypass, provide either multiple step unloading or continuous capacity modulation; indicate bypass capacity per Table C403.3.3.		
NO	C403.3.2.5	Humidification	For cooling systems with humidification equipment that are also required to have air economizer, indicate humidifier is adiabatic (direct evaporative or fog atomization), or exception applied.		
NA	C403.3.2	Hydronic equipment	Refer to Requirements List section Hydronic Systems - Equipment Selection & Performance for selection criteria specific to chillers and boilers.		
NO	C403.9	Heat rejection equipment	Refer to Requirements List section Heat Rejection Systems - Equipment Selection & Performance for selection criteria specific to cooling towers, dry coolers and condensers (air-cooled and evaporative).		
EQUIPMENT SELECTION & PERFORMANCE - DEDICATED OUTSIDE AIR SYSTEMS (DOAS)					

Mechanical Requirements List, pg 3 of 25

NA	C403.3.5, C403.3.5.4	Dedicated outdoor air systems	For buildings with occupancies required to comply with the DOAS provision per Table C403.3.5, identify on plans all occupancies in the building and indicate which occupied spaces are required to have ventilation air delivered by a DOAS; or exception applied.		
NA			If natural ventilation exception is applied, identify these spaces on plans; indicate operable window area complies with IMC Section 402; provide documentation describing how required ventilation will be provided during all occupied hours, including during inclement weather.		
NA			If high efficiency VAV exception is applied, identify these spaces on plans; refer to Single Zone VAV section for Groups A-1, A-2 and A-3 occupancy classifications, or Multiple Zone VAV for other than Groups A-1, A-2 and A-3 (per Table C403.3.5).		
NA			If compliance with the DOAS provisions is deemed to be impractical, provide documentation that demonstrates the alternate design strategy applied that achieves a comparable level of energy efficiency, as pre-approved by the AHJ.		
NA			Refer to Requirements List section after Multiple Zone Air Systems for High Efficiency Multiple-Zone VAV Systems exception to C403.3.5 DOAS.		
NA			Refer to Requirements List section after High Efficiency Single-Zone VAV Systems exception to C403.3.5 DOAS.		
NA	C403.3.5.1	DOAS energy recovery method and effectiveness	For all DOAS systems, indicate exhaust air ER method and basis of rated effectiveness (sensible or latent); indicate ≥ 60% sensible or ≥ 50% enthalpy ER effectiveness based on delta between outdoor air and return air enthalpies at design conditions; or exception applied.		
NA			If applying exception for DCV, identify occupant load in space and airflow control configured to reduce ventilation rate by ≥ 50% when occupancy is less than design occupancy.		
NA	C403.3.5.1	DOAS fan power	For DOAS with total system fan hp < 5 hp, indicate total system fan power does not exceed 1 watt per cfm.		
NA			For DOAS with total system fan hp ≥ 5 hp, indicate total system fan power complies with fan power limitation per Section C403.8.1.		

Mechanical Requirements List, pg 4 of 25

NA	C403.3.5.2	Heating / cooling system controls with DOAS	Indicate systems and equipment associated with the delivery of zone level heating and cooling (fans, hydronic pumps, primary air dampers, etc.) are configured to shut off, and central equipment is configured to turn down, when there is no call for heating or cooling in the zone they serve.		
NA			If applying Exception to heating / cooling fans used for air mixing in the space during de-occupied periods, include fan watts per cfm in equipment schedule.		
NA	C403.3.5.3	Decoupled DOAS supply air	Indicate method of delivery of DOAS supply air to the occupied space (directly into space, downstream of terminal heating / cooling coils); or exception applied.		
NA	C403.6.1	Multiple zone DOAS	For DOAS serving multiple zones, indicate controls configured to reduce the volume of outdoor air in each zone independently when the zone is unoccupied; or exception applied.		
ADDITIONAL EFFICIENCY CREDITS - DEDICATED OUTSIDE AIR SYSTEMS (DOAS)					
NA	C406.6	DOAS	For building occupancies not subject to the requirements of Section C403.3.5, to comply with this additional efficiency credit, provide calculations that demonstrate 90% or more of the total floor area of all occupied, conditioned spaces are served by a DOAS per C403.3.5.		
NA	C406.7	High performance DOAS - Energy recovery	For all building occupancies, to comply with this additional efficiency credit, demonstrate effectiveness and fan power.		
NA			Indicate energy recovery sensible effectiveness of all DOAS is ≥ 80%.		
NA			For each system, indicate that total system fan power does not exceed 0.5 watts per cfm.		
FANS AND FAN CONTROLS					
YES	C403.8.1	Fan power limitation	For all HVAC fan systems that provide heating and / or cooling and all DOAS, provide system total nameplate hp in equipment schedules on project plans.		
NO			For all applicable HVAC systems with total fan motor nameplate hp > 5hp, verify fan system motor hp or bhp complies with fan power limits per equations in Table C403.8.1(A).		
YES			Terminal units installed in conjunction with a DOAS hydronic heat pumps, VRF heat pumps, chilled/hot water terminal units, variable volume terminal units) shall be treated as independent air-handling units for purposes of fan power calculations.		



Bath & Body Works Three Limited Parkway - Columbus, Ohio 43290 Telephone: 614.415.7000 - Fax: 614.415.7349

104.01.0737.01 BATH & BODY WORKS SOUTH HILL MALL - REMOTE STORAGE

PROJECT INFORMATION: 104.01.0737.01 BATH & BODY WORKS SOUTH HILL MALL - REMOTE STORAGE

REVISIONS: REV 1 - NO COMMENTS 09/19/2022 REV 2 - NO COMMENTS 06/09/2023

DATE ISSUED: 12/19/2022 DESIGNED BY: MAR DRAWN BY: TBA CHECKED BY: NJK

WSEC REQUIREMENTS

DRAWING NUMBER: M06.02

Mechanical Requirements List, pg 5 of 25

Table with 4 columns: NO, C403.8.2, Motor nameplate hp, For all applicable HVAC systems with total fan motor nameplate hp > 5hp, indicate fan motors specified are the smallest available motor hp size greater than fan hp, note exceptions apply.

Mechanical Requirements List, pg 6 of 25

Table with 4 columns: YES, C403.8.2, Motor nameplate hp, For all applicable HVAC systems with total fan motor nameplate hp > 5hp, indicate fan motors specified are the smallest available motor hp size greater than fan hp, note exceptions apply.

Mechanical Requirements List, pg 7 of 25

Table with 4 columns: NA, C403.7.4, Ventilation controls for Group R-1 guestrooms, Refer to Requirements List section HVAC Controls for Group R-1 temperature setback and set-up controls.

Mechanical Requirements List, pg 8 of 25

Table with 4 columns: NA, C403.7.4, Ventilation controls for Group R-1 guestrooms, Refer to Requirements List section HVAC Controls for Group R-1 temperature setback and set-up controls.

Mechanical Requirements List, pg 9 of 25

Table with 4 columns: NA, C403.8.2, Motor nameplate hp, For all applicable HVAC systems with total fan motor nameplate hp > 5hp, indicate fan motors specified are the smallest available motor hp size greater than fan hp, note exceptions apply.

Mechanical Requirements List, pg 10 of 25

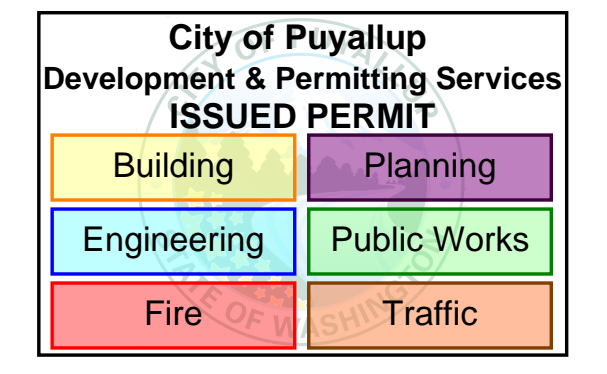
Table with 4 columns: YES, C403.4.1, Thermostatic controls (thermostats and humidistats), Indicate locations of thermostatic and humidity control devices and the zones they serve on plans, including perimeter system zones.

Mechanical Requirements List, pg 11 of 25

Table with 4 columns: YES, C403.4.1, Door switches for HVAC system thermostatic control, Where doors open to the outdoors from a conditioned space, indicate automatic controls configured to setback the HVAC systems when the door is open for > 5 minutes.

Mechanical Requirements List, pg 12 of 25

Table with 4 columns: NA, C403.7.4, Temperature setback controls for Group R-1 guestrooms, For hotels / motels with over 50 guest rooms, indicate automatic controls for HVAC equipment serving guest rooms are configured to setback (heating and set-up) cooling) temperature setback by at least 4°F when room is unoccupied, and adjust setpoint to 60°F (heating and 80°F cooling) when room is unoccupied / vacated, indicate control method - activated by room entry, occupancy sensor or networked guestroom control system.





Bath & Body Works Three Limited Parkway - Columbus, Ohio 43290 Telephone: 614.415.7000 - Fax: 614.415.7349

Mechanical Requirements List, pg 13 of 25

Table with 4 columns: Item ID, Description, Requirement, and Notes. Includes items for duct construction, duct pressure classifications, high pressure duct leakage test, duct insulation, shaft and plenum insulation, and piping.

Mechanical Requirements List, pg 14 of 25

Table with 4 columns: Item ID, Description, Requirement, and Notes. Includes items for economizers, air economizer required, air economizer exceptions, integrated economizer operation, air economizer capacity, air economizer controls, air economizer high limit controls, relief of excess outdoor air, and air economizer operation.

Mechanical Requirements List, pg 15 of 25

Table with 4 columns: Item ID, Description, Requirement, and Notes. Includes items for water economizer capacity, water economizer maximum pressure drop, DX equipment economizer fault detection and diagnostics, hydronic systems - equipment selection & performance, maximum air cooled chiller capacity, large capacity cooling systems, non-standard water-cooled centrifugal chillers, hot gas bypass limitation for chillers, large capacity boiler systems, variable flow capacity - pumps, boiler sequencing, and hydronic systems - controls.

Mechanical Requirements List, pg 16 of 25

Table with 4 columns: Item ID, Description, Requirement, and Notes. Includes items for two-pipe changeover systems, heating water temperature setback, hydronic system part load controls and supply-water temperature reset, hydronic system variable pump flow control, and chiller/boiler plant pump isolation.

Mechanical Requirements List, pg 17 of 25

Table with 4 columns: Item ID, Description, Requirement, and Notes. Includes items for water loop heat pump - temperature deadband, water loop heat pump - heat rejection equipment, water loop heat pump - isolation valves, heat rejection systems - equipment selection & performance, heat rejection & recovery - controls, fan speed control, cooling tower flow turndown, heat recovery for service water heating, and multiple zone air systems.

Mechanical Requirements List, pg 18 of 25

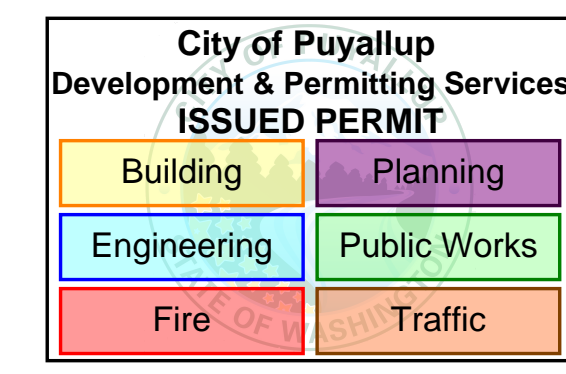
Table with 4 columns: Item ID, Description, Requirement, and Notes. Includes items for steam condensate systems, refrigeration condenser heat recovery, heat recovery for space heating, water to water heat recovery, exhaust heat recovery, process heat recovery, and multiple zone air systems.

Mechanical Requirements List, pg 19 of 25

Table with 4 columns: Item ID, Description, Requirement, and Notes. Includes items for air systems serving multiple zones, VAV air terminal primary supply airflow, single duct VAV terminal units, dual duct systems - terminal units, VAV system static & DDC set points, VAV system supply air reset, and multiple zone VAV system ventilation optimization controls.

Mechanical Requirements List, pg 20 of 25

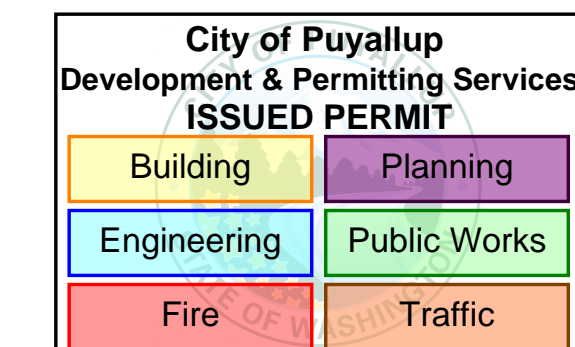
Table with 4 columns: Item ID, Description, Requirement, and Notes. Includes items for parallel fan powered VAV air terminals, minimum area served and zoning, air economizer, direct digital controls (DDC), supply and outdoor airflow measurement and control, zone isolation and maximum area served, interior / exterior zone design supply air temperature, and maximum air terminal inlet velocity and fan power.



Project information for Bath & Body Works South Hill Mall - Remote Storage. Includes project name, address, contact info, and revision table.

WSEC REQUIREMENTS logo and drawing number M06.03. Includes date issued, designed by, drawn by, checked by, and NTS details.

PRMH20230873



Bath & Body Works
Three Limited Parkway - Columbus, Ohio 43290
Telephone: 614.415.7000 - Fax: 614.415.7349

THESE DRAWINGS AND SPECIFICATIONS ARE PREPARED FOR USE ON A SPECIFIC SITE... THESE DRAWINGS AND SPECIFICATIONS ARE THE PROPERTY OF BATH AND BODY WORKS, INC. AND SHALL NOT BE REPRODUCED OR USED IN ANY MANNER WITHOUT THE WRITTEN AUTHORIZATION OF BATH AND BODY WORKS, INC. ALL RIGHTS ARE RESERVED.

PROJECT INFORMATION:
104.01.0737.01
BATH & BODY WORKS
SOUTH HILL MALL - REMOTE STORAGE
SPACE NO. 235
3500 S. MERRILL STREET
PUYALLUP, WA 98373

REVISIONS:
REVISION 1 - NO COMMENTS 09/18/2023
REVISION 2 - NO COMMENTS 06/26/2023

DATE ISSUED: 12/19/2022
DESIGNED BY: MAR
DRAWN BY: TBA
CHECKED BY: NJK

WSEC REQUIREMENTS

DRAWING NUMBER: M06.04

Mechanical Requirements List, pg 21 of 25

2018 WSEC Requirements for Commercial Buildings including Group R2, R3 & R4 over 3 stories & all R1 - Administered by 2022 NEEA. All rights reserved. The following information is necessary to check a mechanical permit application for compliance with the mechanical systems and equipment requirements in the Washington State Energy Code, Commercial Provisions. For questions about this report, contact WSEC Commercial Technical Support at 360-539-5300 or via email at com.techsupport@waenergycodes.com

Table with 4 columns: Item ID, Code, Description, and Requirements. Includes items for maximum allowable system brake horsepower, fan-powered terminal unit motor and control, application of single duct and fan-powered terminal units, fan-powered terminal unit primary air reset, controls for high occupant density spaces, dedicated cooling systems serving data centers and server/electronic equipment, dedicated cooling systems serving the rest of building, central plant efficiency, and high efficiency chilled water plant.

Mechanical Requirements List, pg 22 of 25

2018 WSEC Requirements for Commercial Buildings including Group R2, R3 & R4 over 3 stories & all R1 - Administered by 2022 NEEA. All rights reserved. The following information is necessary to check a mechanical permit application for compliance with the mechanical systems and equipment requirements in the Washington State Energy Code, Commercial Provisions. For questions about this report, contact WSEC Commercial Technical Support at 360-539-5300 or via email at com.techsupport@waenergycodes.com

Table with 4 columns: Item ID, Code, Description, and Requirements. Includes items for high efficiency heating water plant, high efficiency chilled water plant, fault detection and diagnostics, air economizer, direct digital controls (DDC), outdoor airflow measurement and control, maximum allowable system brake horsepower, supply airflow control, and high efficiency single-zone VAV systems.

Mechanical Requirements List, pg 23 of 25

2018 WSEC Requirements for Commercial Buildings including Group R2, R3 & R4 over 3 stories & all R1 - Administered by 2022 NEEA. All rights reserved. The following information is necessary to check a mechanical permit application for compliance with the mechanical systems and equipment requirements in the Washington State Energy Code, Commercial Provisions. For questions about this report, contact WSEC Commercial Technical Support at 360-539-5300 or via email at com.techsupport@waenergycodes.com

Table with 4 columns: Item ID, Code, Description, and Requirements. Includes items for controls for high occupant density spaces, high efficiency system option, air economizer, direct digital controls (DDC), outdoor airflow measurement and control, maximum allowable system brake horsepower, supply airflow control, and exterior heating systems.

Mechanical Requirements List, pg 24 of 25

2018 WSEC Requirements for Commercial Buildings including Group R2, R3 & R4 over 3 stories & all R1 - Administered by 2022 NEEA. All rights reserved. The following information is necessary to check a mechanical permit application for compliance with the mechanical systems and equipment requirements in the Washington State Energy Code, Commercial Provisions. For questions about this report, contact WSEC Commercial Technical Support at 360-539-5300 or via email at com.techsupport@waenergycodes.com

Table with 4 columns: Item ID, Code, Description, and Requirements. Includes items for HVAC equipment energy use metering, documentation and system specific requirement to support commissioning, and project close out documentation.

Mechanical Requirements List, pg 25 of 25

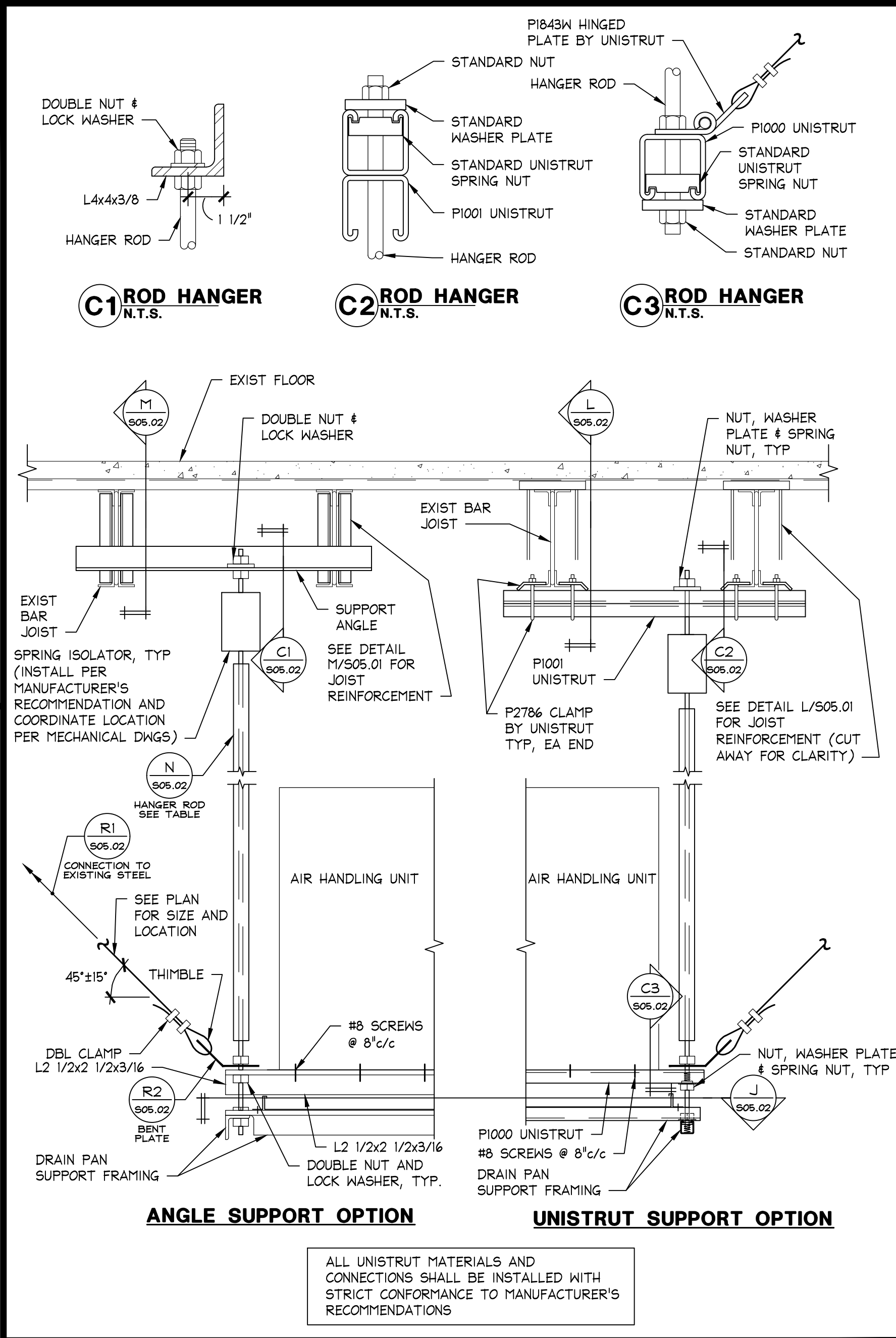
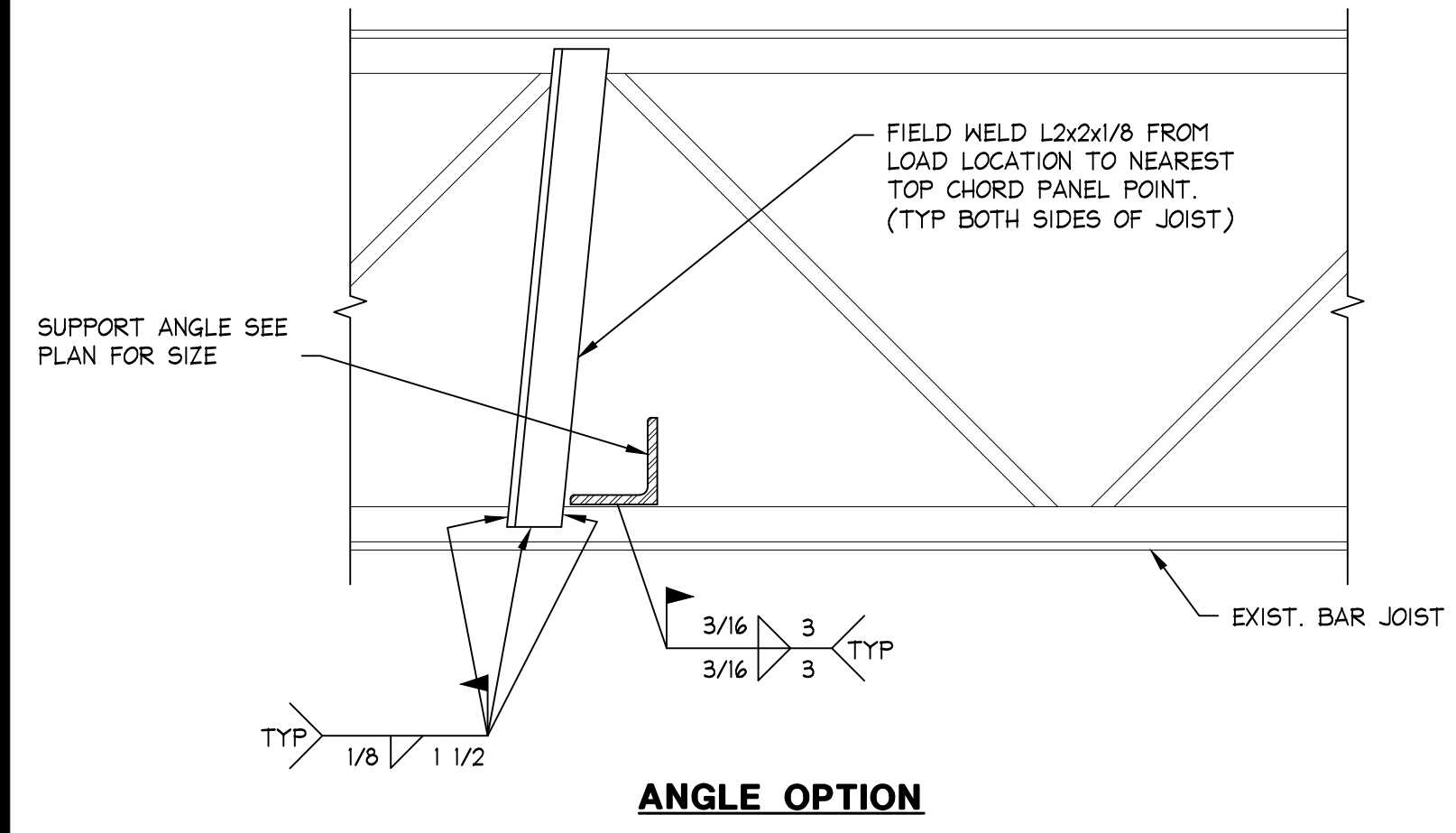
2018 WSEC Requirements for Commercial Buildings including Group R2, R3 & R4 over 3 stories & all R1 - Administered by 2022 NEEA. All rights reserved. The following information is necessary to check a mechanical permit application for compliance with the mechanical systems and equipment requirements in the Washington State Energy Code, Commercial Provisions. For questions about this report, contact WSEC Commercial Technical Support at 360-539-5300 or via email at com.techsupport@waenergycodes.com

Table with 4 columns: Item ID, Code, Description, and Requirements. Includes items for functional performance testing criteria, air system and hydronic system balancing, air system balancing devices, hydronic system balancing devices, and project close out documentation.



ROOF FRAMING NOTES:

- CONTROLLING BUILDING CODE: 2018 INTERNATIONAL BUILDING CODE
ROOF DESIGN LIVE LOAD = 25 PSF
ROOF DEAD LOAD (ASSUMED) = 12 PSF
GROUND SNOW LOAD = 20 PSF
DESIGN WIND SPEED = 97 MPH
- EXISTING ROOF CONSTRUCTION: METAL DECK, SUPPORTED BY STEEL JOISTS, WIDE FLANGE BEAMS, AND BEARING WALLS
- INDICATES ROOF OPENING. DETERMINE EXACT SIZE AND LOCATION FROM MECHANICAL DRAWINGS
- IT IS THE CONTRACTOR'S SOLE RESPONSIBILITY TO DETERMINE ERECTION PROCEDURE AND SEQUENCE TO ENSURE THE SAFETY OF THE BUILDING AND ITS COMPONENT PARTS DURING ERECTION. THIS INCLUDES, BUT IS NOT LIMITED TO, THE ADDITION OF WHATEVER TEMPORARY BRACING, GUYS OR TIE-DOWNS THAT MAY BE NECESSARY. SUCH MATERIAL SHALL BE REMOVED AND SHALL REMAIN THE PROPERTY OF THE CONTRACTOR AFTER COMPLETION OF THE PROJECT.
- FIELD VERIFY ALL DIMENSIONS PRIOR TO FABRICATION. MECH. UNIT DIMENSIONS SHALL BE COORDINATED WITH APPROVED MECH. UNIT MANUFACTURER DRAWINGS.
- SUPPORT FRAMING SHOWN IS FOR THE MECH. UNIT SPECIFIED ON MECHANICAL DRAWINGS. IF DIFFERENT UNIT IS TO BE USED, CONTACT STRUCTURAL ENGINEER BEFORE PROCEEDING.
- ALL STEEL SHALL BE ASTM A36 U.N.O.
- STRUCTURAL STEEL SHALL CONFORM TO THE AISC "SPECIFICATIONS FOR THE DESIGN, FABRICATION AND ERECTION OF STRUCTURAL STEEL OF BUILDINGS". (CURRENT EDITION)
- ALL WELDING SHALL BE DONE IN ACCORDANCE WITH "AMERICAN WELDING SOCIETY" SPECIFICATIONS (CURRENT EDITION).
- WELDING ELECTRODES SHALL BE E70XX, LOW HYDROGEN.
- IF EXISTING STRUCTURE IS DIFFERENT THAN SHOWN, CONTACT STRUCTURAL ENGINEER BEFORE PROCEEDING WITH ANY WORK IN THAT AREA.



PRMH20230873

City of Puyallup
Development & Permitting Services
ISSUED PERMIT

Building	Planning
Engineering	Public Works
Fire	Traffic

www.greenbergfarrow.com
8600 West Bryn Mawr Ave.
Suite 600N
Arlington Heights, IL 60631
847 788 9200

Professional Seal
Professional Engineer
No. 17355
Expires 6/18/24
date 5/9/23

Bath & Body Works

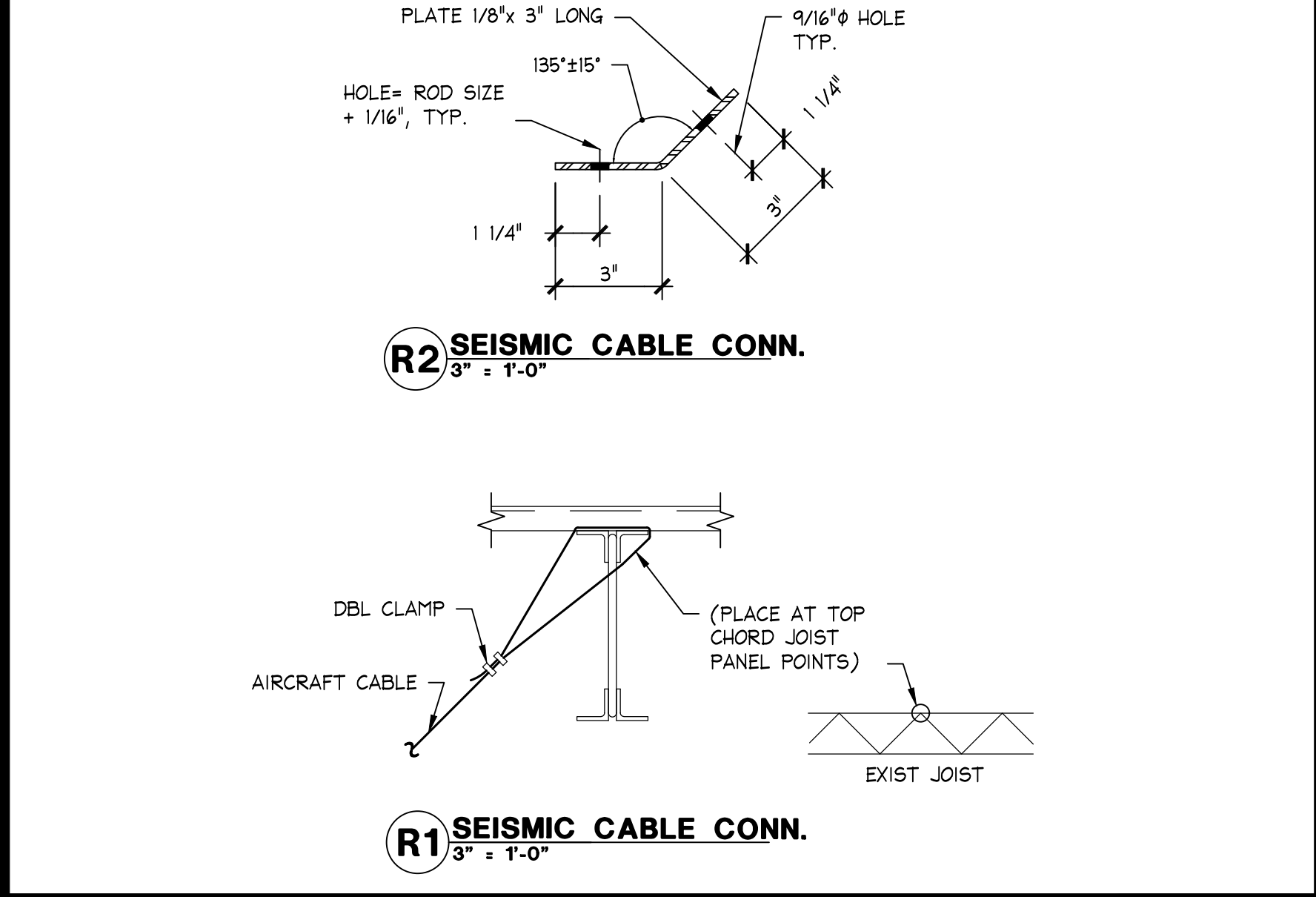
Three Limited Parkway - Columbus, Ohio 43290
Telephone: 614.415.7000 • Fax: 614.415.7349

STRUCTURAL NOTES

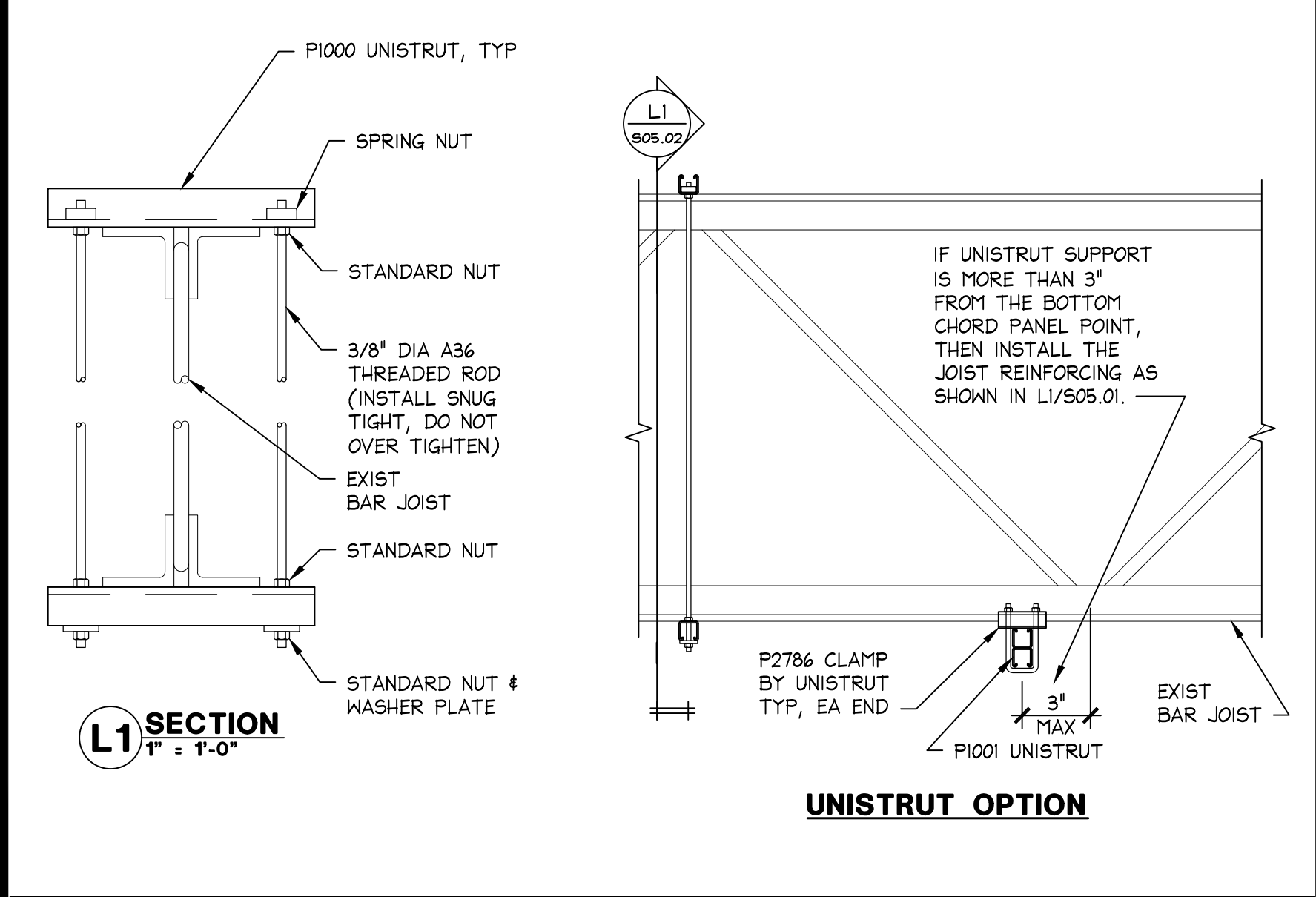
N.T.S.
001-S051-S00-NOTE
S
08.15.11

JOIST REINFORCING

1" = 1'-0"
00D-S051-M01-RTU
M
08.15.11



3" = 1'-0"
00D-S051-R01-RTU
R
08.15.11



1" = 1'-0"
00D-S051-L01-RTU
L
08.31.17

SEISMIC CABLE DETAILS

3" = 1'-0"
00D-S051-R01-RTU
R
08.15.11

JOIST REINFORCING

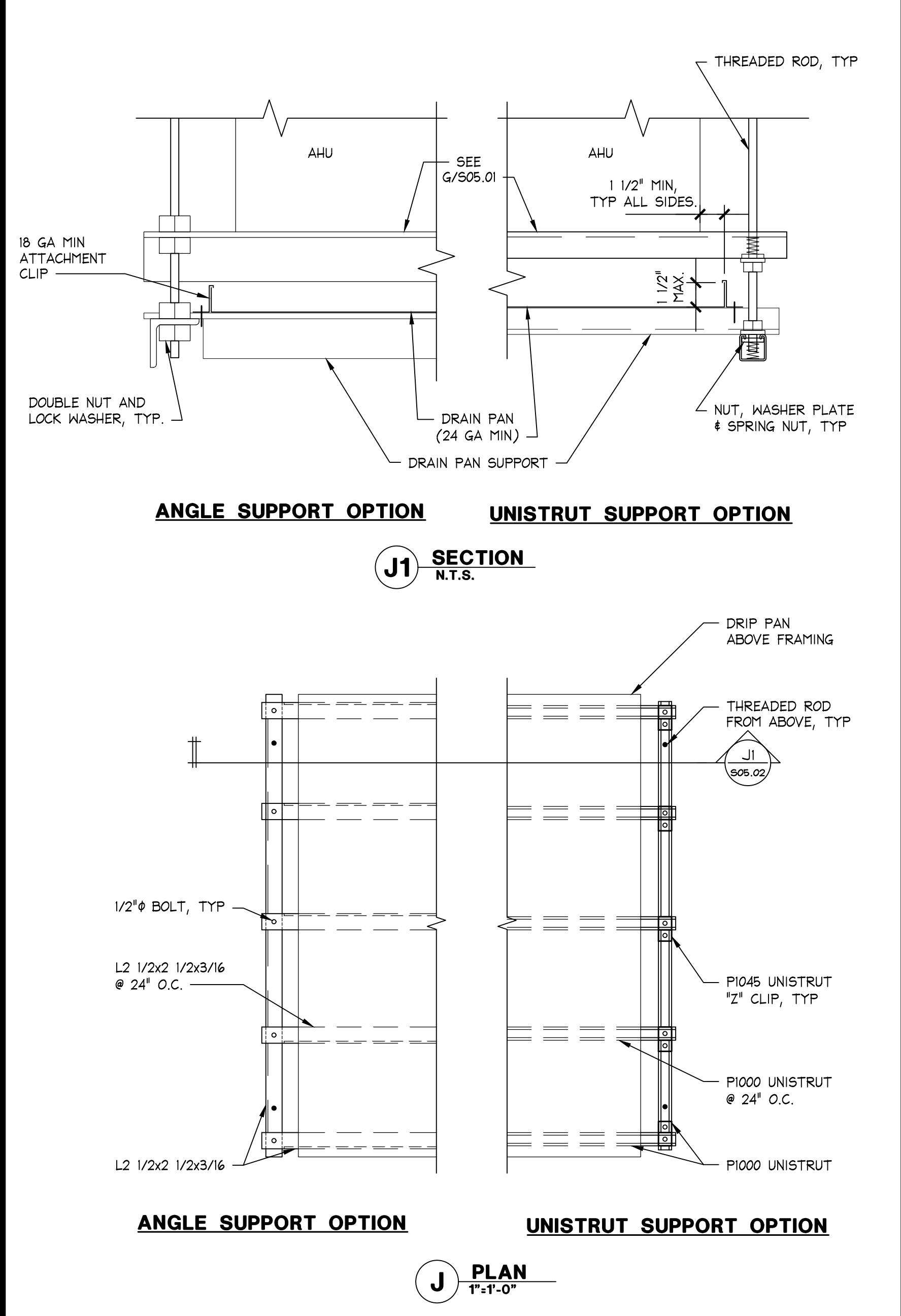
1" = 1'-0"
00D-S051-L01-RTU
L
08.31.17

UNIT WEIGHT, LBS.	VERTICAL HANGER ROD	
	ROD SIZE, IN	ROD REINFORCEMENT
~500	3/8"	UNISTRUT P1000T STIFFENER w/P2485 CRADLE CLIP @ 10"/c (MAX UNBRACED LENGTH = 10'-0")
500WT.<1000	1/2"	UNISTRUT P1000T STIFFENER w/P2485 CRADLE CLIP @ 14"/c (MAX UNBRACED LENGTH = 10'-0")
1000WT.<1500	5/8"	UNISTRUT P1000T STIFFENER w/P2485 CRADLE CLIP @ 16"/c (MAX UNBRACED LENGTH = 10'-0")
1500WT.<2000	3/4"	UNISTRUT P1000T STIFFENER w/P2485 CRADLE CLIP @ 20"/c (MAX UNBRACED LENGTH = 7'-0")

NOTES:
1. ROD SHALL MEET THE MIN. SPECIFICATION OF ASTM A575 AND A576 THREADED ROD.

ALL UNISTRUT MATERIALS AND CONNECTIONS SHALL BE INSTALLED WITH STRICT CONFORMANCE TO MANUFACTURER'S RECOMMENDATIONS

6" = 1'-0"
00D-S051-N00-RTU
N
12.22.17



1" = 1'-0"
00D-S051-J01-RTU
J
05.18.18

SEISMIC HANGER ROD

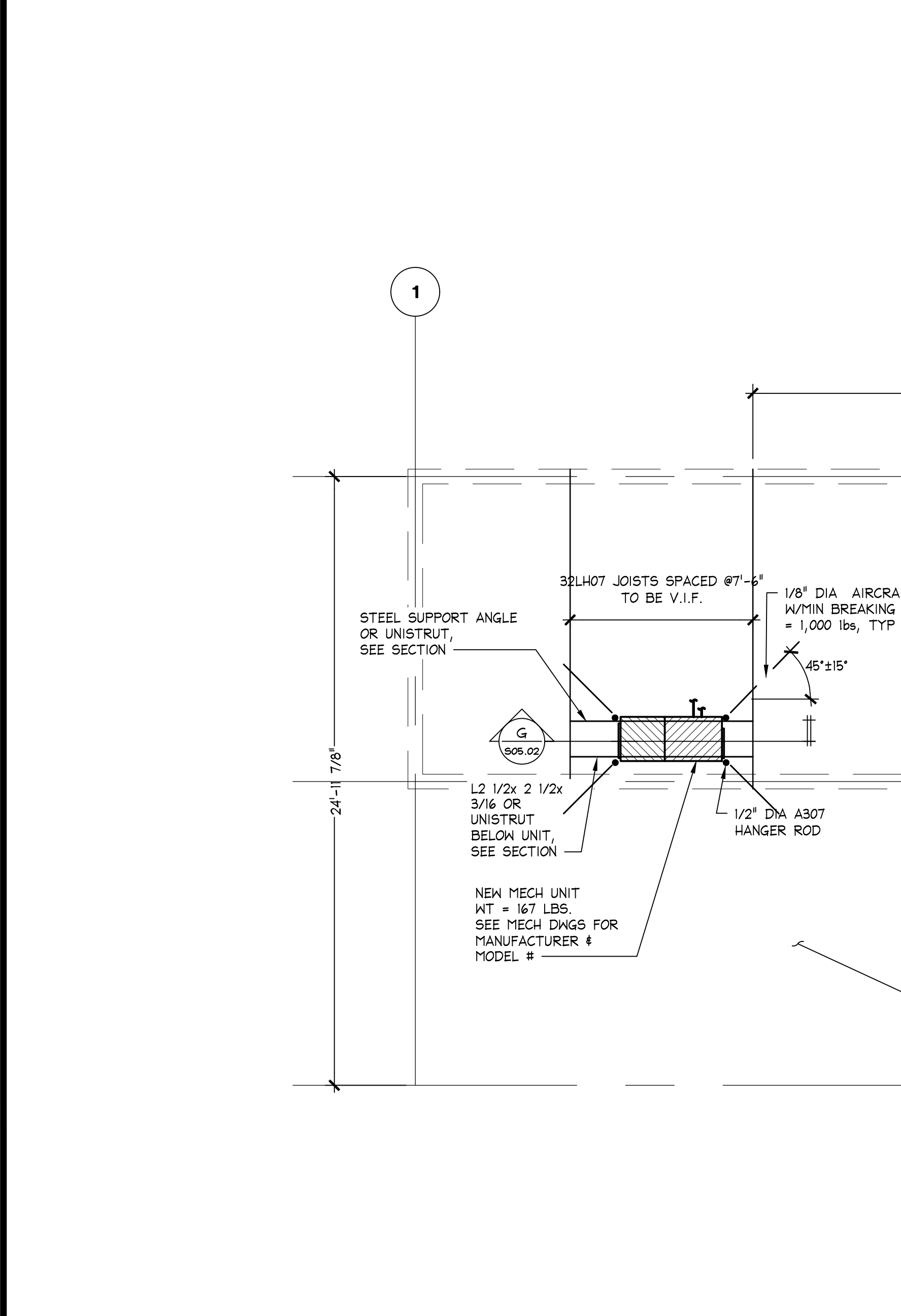
6" = 1'-0"
00D-S051-N00-RTU
N
12.22.17

DRAIN PAN SUPPORT

1" = 1'-0"
00D-S051-J01-RTU
J
05.18.18

HANGING UNIT w/SEISMIC BRACING

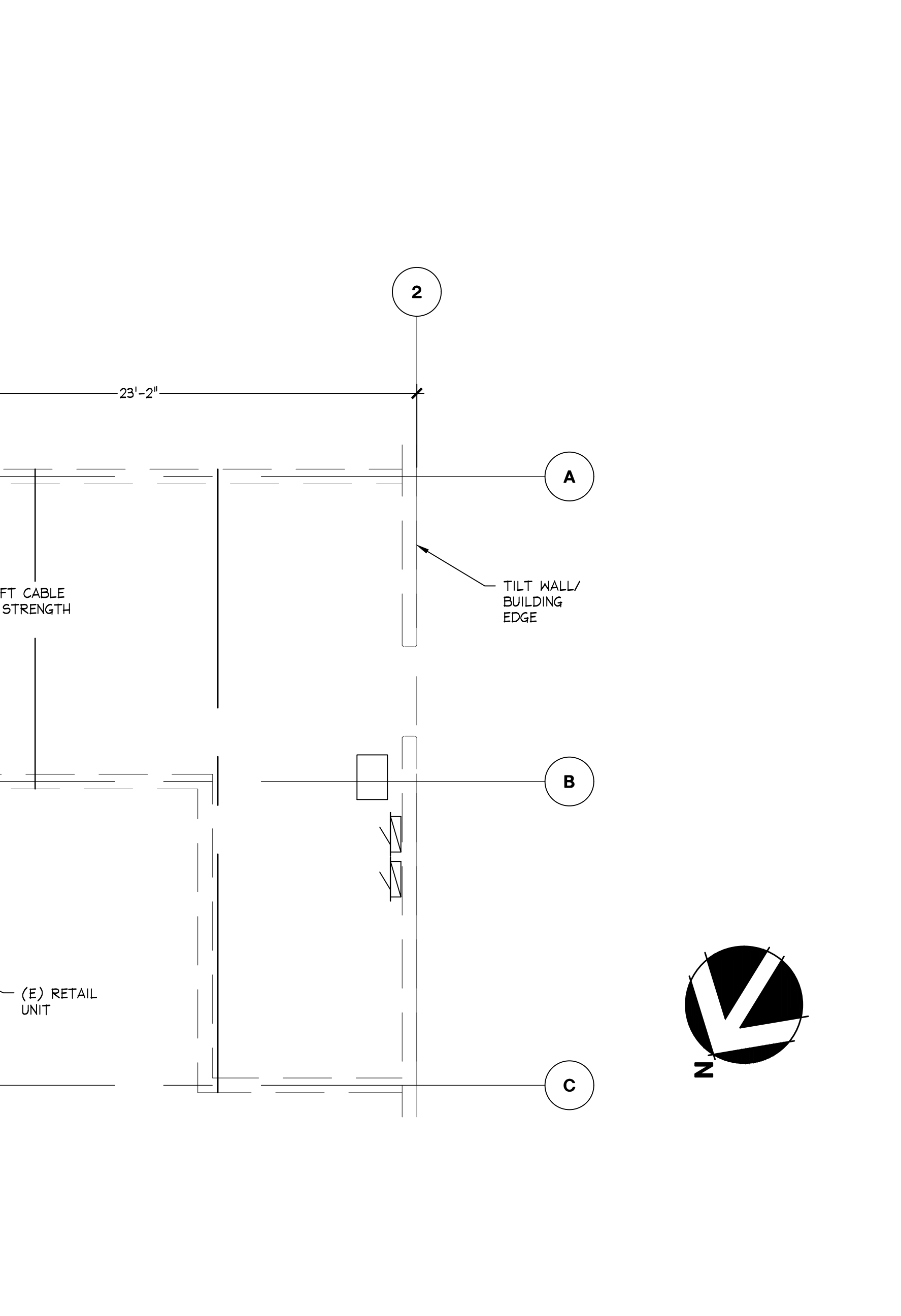
1" = 1'-0"
00D-S051-C01-RTU
G
05.18.18



1/4" = 1'-0"
00D-S051-G01-RTU
G
05.18.18

PATE CURB SUPPORT

1 1/2" = 1'-0"
008-S051-M00-RTU
C
08.26.16



1/4" = 1'-0"
008-S051-M00-RTU
C
08.26.16

PARTIAL FLOOR FRAMING PLAN

1/4" = 1'-0"
00D-S051-A01-RTU
A
08.15.11

104.01.0737.01

BATH & BODY WORKS
SOUTH HILL MALL - REMOTE STORAGE
3500 S. MERIDIAN STREET
PUYALLUP, WA 98373

REVISIONS:

NO.	DESCRIPTION	DATE

DATE ISSUED: 12/19/2022
DESIGNED BY: AD
DRAWN BY: AD
CHECKED BY: MH

MECH SUPPORT FRAMING PLAN AND DETAILS

DRAWING NUMBER: S05.02

PROJECT INFORMATION:

104.01.0737.01

BATH & BODY WORKS
SOUTH HILL MALL - REMOTE STORAGE
3500 S. MERIDIAN STREET
PUYALLUP, WA 98373

REVISIONS:

NO.	DESCRIPTION	DATE

DATE ISSUED: 12/19/2022
DESIGNED BY: AD
DRAWN BY: AD
CHECKED BY: MH

MECH SUPPORT FRAMING PLAN AND DETAILS

DRAWING NUMBER: S05.02