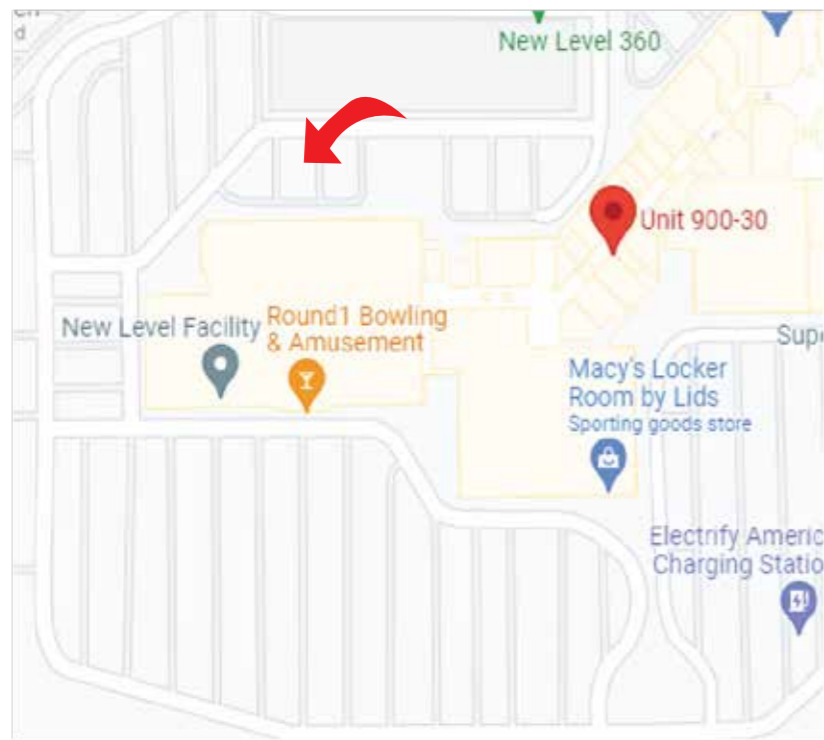


### PARCEL INFO

Parcel: 6021010051  
 Zone: CCX  
 Community Commercial Mixed Use  
 Parcel Area: 32.896 acres  
 Site Address:  
 3500 S Meridian Unit 900-30,  
 Puyallup, WA 98373

Property Taxpayer:  
 CAFARO NORTHWEST PARTNERSHIP  
 PO BOX 586  
 ANNANDALE, NJ 08801



### SITE INFORMATION

PRSG20230623



**City of Puyallup  
 Planning  
 Division  
 APPROVED**  
 See permit conditions.  
 GClark  
 06/08/2023  
 9:42:16 AM

**City of Puyallup  
 Building  
 APPROVED**  
 See permit for additional requirements.  
 JMontgomery  
 07/03/2023  
 2:40:01 PM

- Proposed Sign
- Property Line
- Building Frontage
- Sign Setback
- Driveways

Sign Setback from the property line = 50' for Sign A, 12' for Sign B  
 Building Frontage = 105' for Sign A, 320' for Sign B  
 Sign to be installed facing parking area  
 1 (one) driveway

**FULL SIZED LEDGIBLE COLOR  
 PLANS ARE REQUIRED TO BE  
 PROVIDED BY THE PERMITTEE ON  
 SITE FOR ALL INSPECTIONS  
 (MIN. PLAN SIZE 24" X 36")**



City of Puyallup Development & Permitting Services ISSUED PERMIT	
Building	Planning
Engineering	Public Works
Fire	Traffic

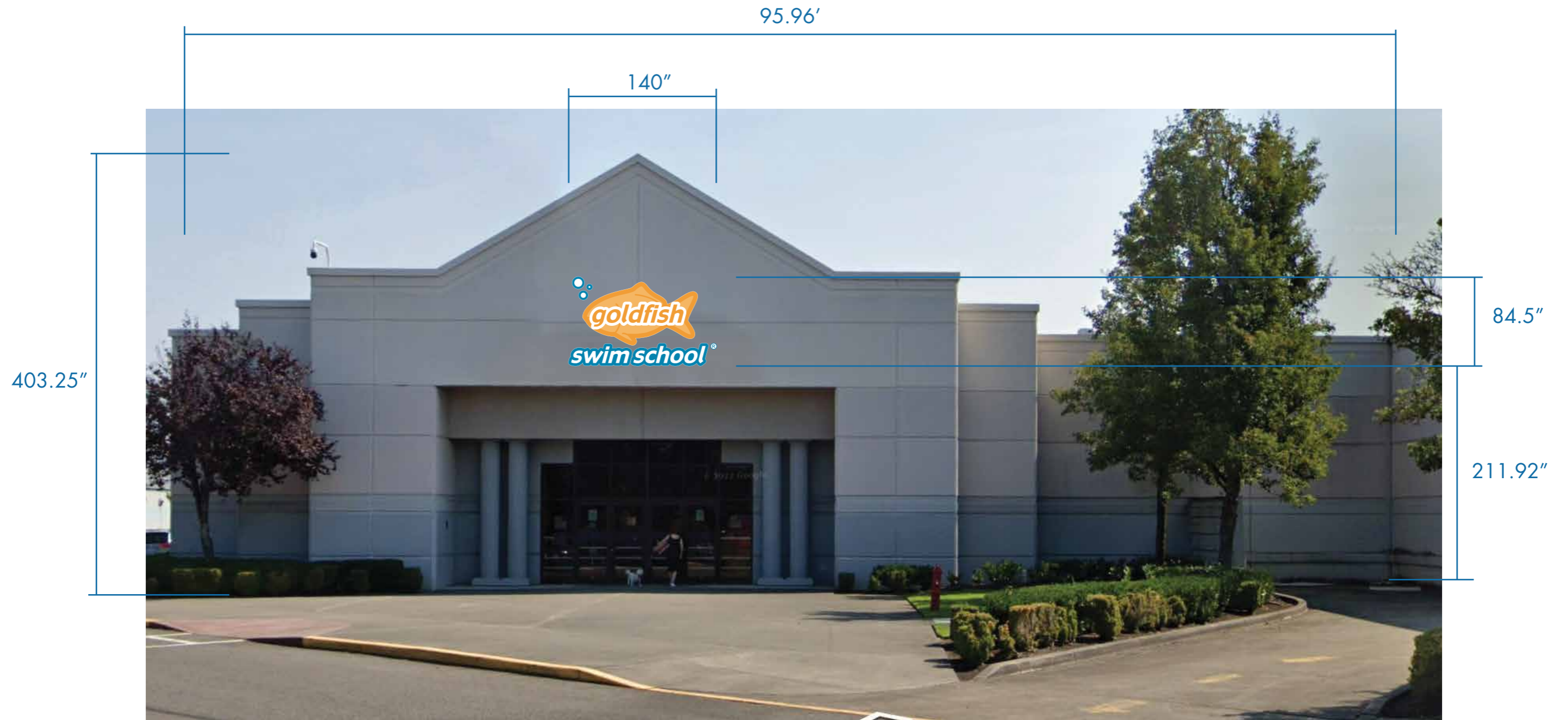
Goldfish Swim School\_Puyallup\_Exterior Sign

Job Order:	Date Proposed: May 10, 2023	Date Revised:
Sign Type: Illuminated Cabinet	Approval:	
Size: (Scale 1:3,262)		

The design depicted herein is the sole property of Clearway Signs, and may not be reproduced in whole or in part without prior written consent. Actual color, letter sizes and graphic layout may vary slightly due to the properties of materials. Colors may vary depending on media substrate. This sign is intended to be installed in accordance with Article 600 of the National Electrical Code and/or other applicable local codes.



# IMPOSED SIGN (SIGN A)



FRONT VIEW (SCALE 1:100)



(253) 314 5623  
www.clearwaysigns.com

City of Puyallup Development & Permitting Services ISSUED PERMIT	
Building	Planning
Engineering	Public Works
Fire	Traffic

Goldfish Swim School\_Puyallup\_Exterior Sign

Job Order:	Date created: <b>May 10, 2023</b>	Date revised:
Sign Type: <b>Illuminated Cabinet</b>	Approval:	
Size:		

The design depicted herein is the sole property of Clearway Signs, and may not be reproduced in whole or in part without prior written consent. Actual color, letter sizes and graphic layout may vary slightly due to the properties of materials. Colors may vary depending on media substrate. This sign is intended to be installed in accordance with Article 600 of the National Electrical Code and/or other applicable local codes.

# EXISTING SIGN (SIGN A)



FRONT VIEW (SCALE 1:100)



(253) 314 5623  
www.clearwaysigns.com

City of Puyallup Development & Permitting Services ISSUED PERMIT	
Building	Planning
Engineering	Public Works
Fire	Traffic

Goldfish Swim School\_Puyallup\_Exterior Sign

Job Order:	Date created: <b>May 10, 2023</b>	Date revised:
Sign Type: <b>Illuminated Cabinet</b>	Approval:	
Size:		

The design depicted herein is the sole property of Clearway Signs, and may not be reproduced in whole or in part without prior written consent. Actual color, letter sizes and graphic layout may vary slightly due to the properties of materials. Colors may vary depending on media substrate. This sign is intended to be installed in accordance with Article 600 of the National Electrical Code and/or other applicable local codes.

# SIGN A DETAILS

Custom Shape Letterbox, Internally illuminated, Returns Painted Black; Trim Cap Painted White  
Qty: 1

PRSG20230623



FRONT VIEW (SCALE 1:25)  
SIGN AREA: 82.17 SQ. FT



SIDE VIEW (SCALE 1:25)

## MATERIAL/COLOR CALLOUT

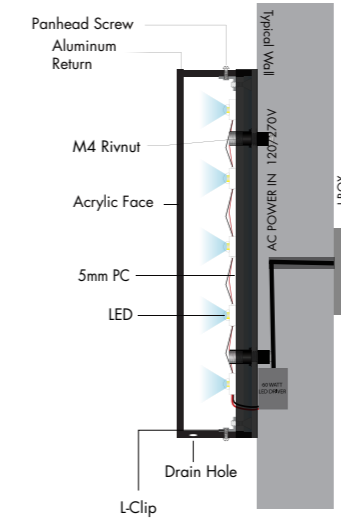


- T1** WHITE TRIM CAP
- A1** ACRYLIC FACE WITH PRINTED VINYL
- L1** WHITE LED
- R1** BLACK ALUMINUM RETURN

## GENERAL NOTES

1. INSTALLATION OF THIS SIGN SHALL CONFORM TO THE REQUIREMENTS OF ARTICLE 600 OF NEC, UI48, UL 2161 COMPLIANT AND/OR OTHER APPLICABLE LOCAL CODES.
2. BRANCH CIRCUIT:
  - ALL BRANCH CIRCUITS FOR SIGNS MUST BE TOTALLY DEDICATED TO SIGNS (INCLUDING DEDICATED GROUND AND DEDICATED NEUTRALPER CIRCUIT).
  - SIGN CIRCUITS MUST NOT BE SHARED.
  - PROPERTY SIZED GROUND WIRE THAT CAN BE TRACKED TO THE BREAKER PANEL MUST BE PROVIDED.
3. UL AND DATA LABELS REQUIRED.
4. SIGNS ARE INTENDED TO BE INSTALLED IN ACCORDANCE WITH THE INSTALLATION INSTRUCTIONS PROVIDED WITH THE SIGN SECTIONS AND THE NEC. AUTHORITIES HAVING JURISDICTION ARE RESPONSIBLE FOR THE ULTIMATE DECISION TO APPROVE AN INSTALLATION.

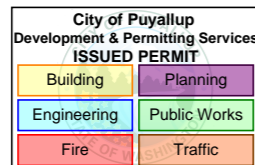
## ATTACHMENT DETAIL



FASTENER SCHEDULE	
<b>THRU-BOLD MOUNTING</b> 	<b>3/8" THREADED ROD</b> FOR USE IN THRU BOLD APPLICATIONS
<b>HANGER BOLTS</b> 	<b>3/8" LAG SCREW</b> FOR USE IN WOOD BLOCKING 1 1/2" MIN PENETRATION
<b>MASONRY LAG BOLT MOUNTING</b> 	<b>MASONRY EXPANSION BOLT</b> W/ ADHESIVE EMBED 2" MIN



(253) 314 5623  
www.clearwaysigns.com

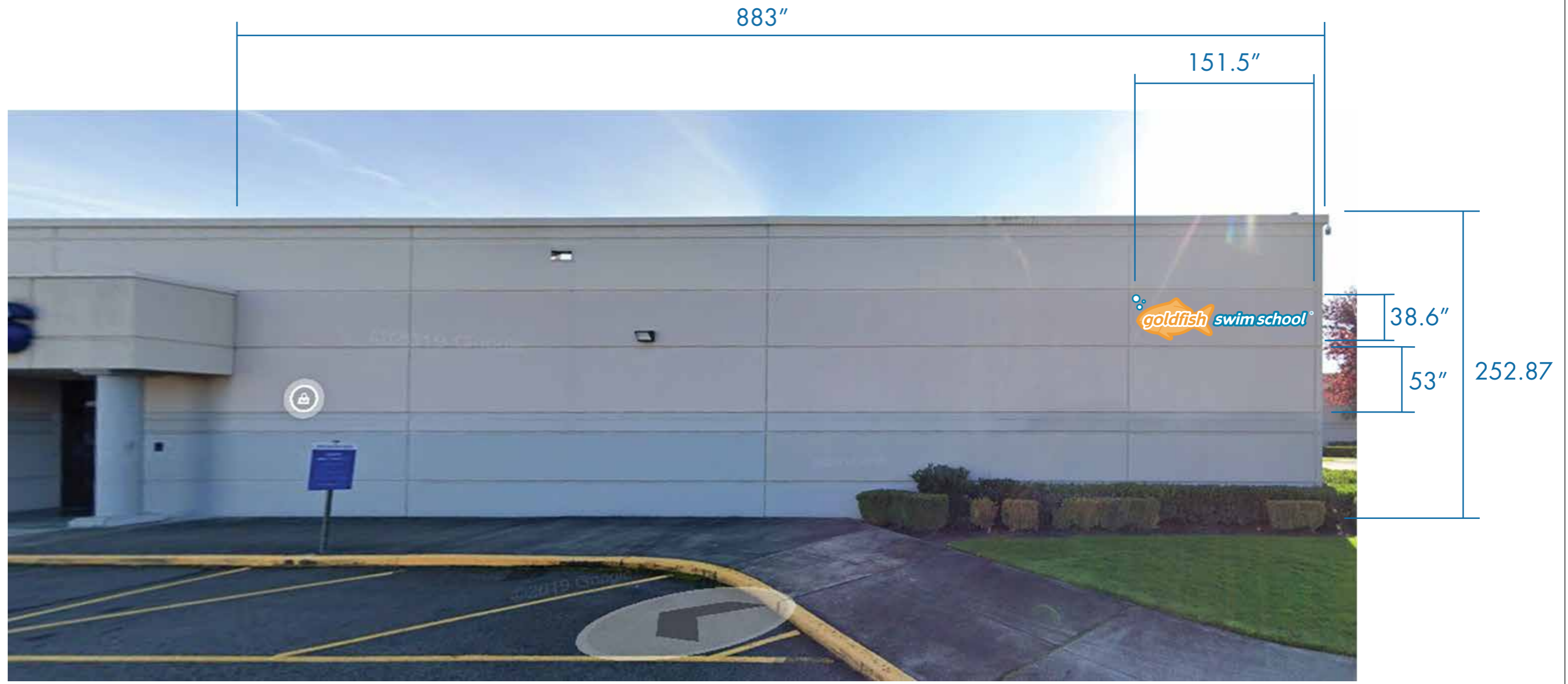


Goldfish Swim School\_Puyallup\_Exterior Sign

Job Order:	Date created: May 10, 2023	Date revised:
Sign Type: Illuminated Cabinet	Approval:	
Size: 140" W x 84.5" H (Scale 1:25)		



# IMPOSED SIGN (SIGN B)



FRONT VIEW (SCALE 1:55)



(253) 314 5623  
www.clearwaysigns.com

City of Puyallup Development & Permitting Services ISSUED PERMIT	
Building	Planning
Engineering	Public Works
Fire	Traffic

Goldfish Swim School\_Puyallup\_Exterior Sign

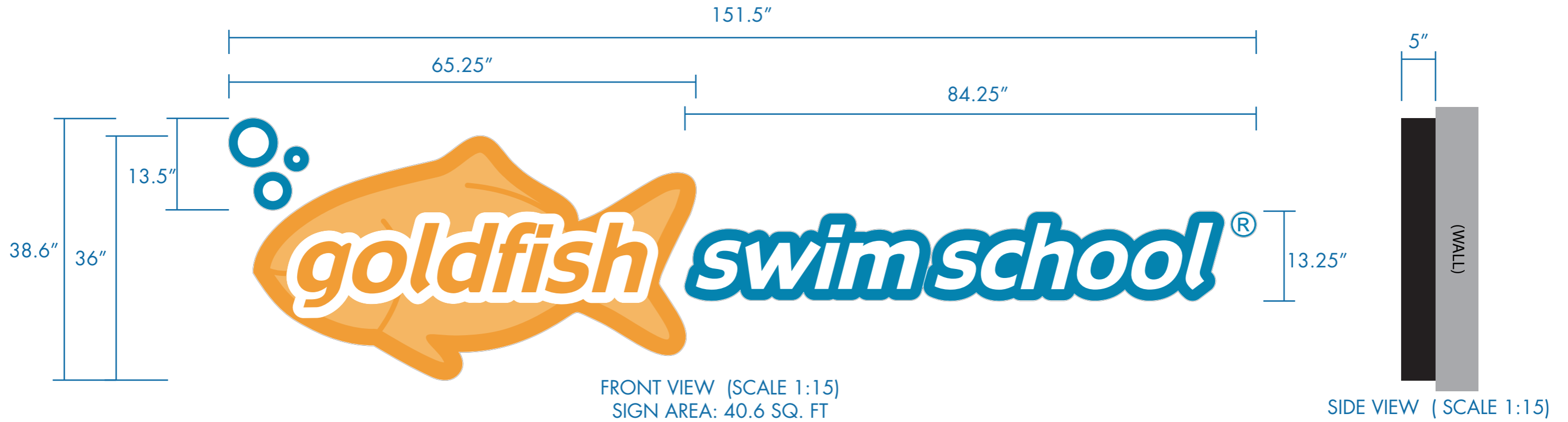
Job Order:	Date created: May 10, 2023	Date revised:
Sign Type: Illuminated Cabinet	Approval:	
Size:		

The design depicted herein is the sole property of Clearway Signs, and may not be reproduced in whole or in part without prior written consent. Actual color, letter sizes and graphic layout may vary slightly due to the properties of materials. Colors may vary depending on media substrate. This sign is intended to be installed in accordance with Article 600 of the National Electrical Code and/or other applicable local codes.

# SIGN B DETAILS

Custom Shape Letterbox, Internally illuminated, Returns Painted Black; Trim Cap Painted White  
Qty: 1

PRSG20230623



## MATERIAL/COLOR CALLOUT

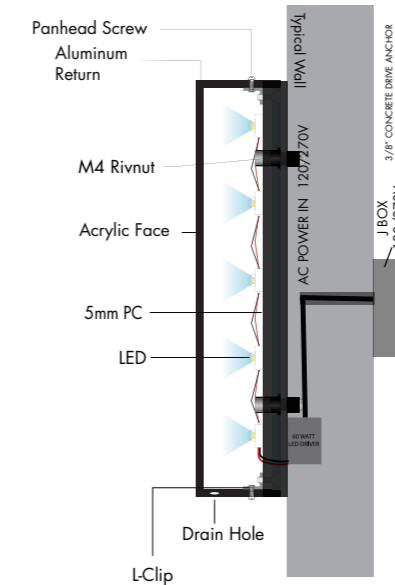


- T1** WHITE TRIM CAP
- A1** ACRYLIC FACE WITH PRINTED VINYL
- L1** WHITE LED
- R1** BLACK ALUMINUM RETURN

## GENERAL NOTES

- INSTALLATION OF THIS SIGN SHALL CONFORM TO THE REQUIREMENTS OF ARTICLE 600 OF NEC, UI48, UL 2161 COMPLIANT AND/OR OTHER APPLICABLE LOCAL CODES.
- BRANCH CIRCUIT:
  - ALL BRANCH CIRCUITS FOR SIGNS MUST BE TOTALLY DEDICATED TO SIGNS (INCLUDING DEDICATED GROUND AND DEDICATED NEUTRALPER CIRCUIT).
  - SIGN CIRCUITS MUST NOT BE SHARED.
  - PROPERTY SIZED GROUND WIRE THAT CAN BE TRACKED TO THE BREAKER PANEL MUST BE PROVIDED.
- UL AND DATA LABELS REQUIRED.
- SIGNS ARE INTENDED TO BE INSTALLED IN ACCORDANCE WITH THE INSTALLATION INSTRUCTIONS PROVIDED WITH THE SIGN SECTIONS AND THE NEC. AUTHORITIES HAVING JURISDICTION ARE RESPONSIBLE FOR THE ULTIMATE DECISION TO APPROVE AN INSTALLATION.

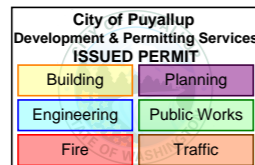
## ATTACHMENT DETAIL



FASTENER SCHEDULE	
<b>THRU-BOLD MOUNTING</b> 	<b>3/8" THREADED ROD</b> FOR USE IN THRU BOLD APPLICATIONS
<b>HANGER BOLTS</b> 	<b>3/8" LAG SCREW</b> FOR USE IN WOOD BLOCKING 1 1/2" MIN PENETRATION
<b>MASONRY LAG BOLT MOUNTING</b> 	<b>MASONRY EXPANSION BOLT</b> W/ ADHESIVE EMBED 2" MIN



(253) 314 5623  
www.clearwaysigns.com



Goldfish Swim School\_Puyallup\_Exterior Sign

Job Order:	Date created: May 10, 2023	Date revised:
Sign Type: Illuminated Cabinet	Approval:	
Size: 151.5" W x 38.6" H (Scale 1:15)		