


GARDCO PureForm

by @ignify



WP1

Gardco PureForm LED wall sconce comfort PWS offers a sleek, low profile design that will complement a range of architectural styles. Comfort optics are designed to enhance visual comfort by reducing glare. PureForm wall sconce provides up to 10,700 lumens to accommodate multiple mounting heights, and is available with Type 2, 3, 4, optical distributions. A full range of control options is available for additional energy savings. Optional emergency battery backup option is available for path-of-egress and is integral to the luminaire.

Ordering guide

Profile	Height	Beam Angle	Optical Distribution	Emergency	Voltage	Mounting	Dimensions	Weight	Material	Finish	Notes
PWS	4.5"	40°	Standard	Optional	120V	Surface	12.5" x 12.5" x 2.5"	1.5 lbs	Aluminum	Black, White, Bronze, Dark Gray, Matte Gray	1. Not available in 347 or 48V. 2. Not available in 277V. 3. Not available with motor sensor. 4. Not available with photo sensor. 5. Not available with motion sensor. 6. Not available with motor sensor. 7. Not available with photo sensor. 8. Available only in 120V or 277V. 9. Not available with motor sensor. 10. Not available with photo sensor. 11. Not available with motion sensor. 12. Not available with photo sensor. 13. Not available with motion sensor. 14. Not available in 200V/NA.
PWS	8.5"	40°	Standard	Optional	120V	Surface	12.5" x 12.5" x 2.5"	1.5 lbs	Aluminum	Black, White, Bronze, Dark Gray, Matte Gray	1. Not available in 347 or 48V. 2. Not available in 277V. 3. Not available with motor sensor. 4. Not available with photo sensor. 5. Not available with motion sensor. 6. Not available with motor sensor. 7. Not available with photo sensor. 8. Available only in 120V or 277V. 9. Not available with motor sensor. 10. Not available with photo sensor. 11. Not available with motion sensor. 12. Not available with photo sensor. 13. Not available with motion sensor. 14. Not available in 200V/NA.
PWS	12.5"	40°	Standard	Optional	120V	Surface	12.5" x 12.5" x 2.5"	1.5 lbs	Aluminum	Black, White, Bronze, Dark Gray, Matte Gray	1. Not available in 347 or 48V. 2. Not available in 277V. 3. Not available with motor sensor. 4. Not available with photo sensor. 5. Not available with motion sensor. 6. Not available with motor sensor. 7. Not available with photo sensor. 8. Available only in 120V or 277V. 9. Not available with motor sensor. 10. Not available with photo sensor. 11. Not available with motion sensor. 12. Not available with photo sensor. 13. Not available with motion sensor. 14. Not available in 200V/NA.
PWS	16.5"	40°	Standard	Optional	120V	Surface	12.5" x 12.5" x 2.5"	1.5 lbs	Aluminum	Black, White, Bronze, Dark Gray, Matte Gray	1. Not available in 347 or 48V. 2. Not available in 277V. 3. Not available with motor sensor. 4. Not available with photo sensor. 5. Not available with motion sensor. 6. Not available with motor sensor. 7. Not available with photo sensor. 8. Available only in 120V or 277V. 9. Not available with motor sensor. 10. Not available with photo sensor. 11. Not available with motion sensor. 12. Not available with photo sensor. 13. Not available with motion sensor. 14. Not available in 200V/NA.

1. Not available in 347 or 48V. 2. Not available in 277V. 3. Not available with motor sensor. 4. Not available with photo sensor. 5. Not available with motion sensor. 6. Not available with motor sensor. 7. Not available with photo sensor. 8. Available only in 120V or 277V. 9. Not available with motor sensor. 10. Not available with photo sensor. 11. Not available with motion sensor. 12. Not available with photo sensor. 13. Not available with motion sensor. 14. Not available in 200V/NA.

PERFORMANCE IN LIGHTING

powered by GEWISS

AMON WALL B TYPE II + NB

SW1



Part number: 070274

Dimensions: LED, AN-96 / Iron gray / Textured, RFD, 80, 3000, Type I, 81.15 x 30, 2147 mm, L70, 800, 80000 h, 1200V/2V, Min. ambient temperature: -30, Max. ambient temperature: 25

Description: Long lasting energy efficient wall pack luminaire. Features control of...
 -Copper free (1% nickel) aluminum housing and Copper free (1% nickel) precision die-cast aluminum heat sink, lens, and mounting plate.
 -Extra clear, tempered, alk. resistant, flat glass diffuser.
 -Custom made, anti-glare lens.
 -Darkness about external hardware.
 -Captive MPCCU allows to maximize heat dissipation and minimize long LED life.
 -High frequency pulse-width modulated optics for advanced light control.
 -Single or dual LED light sources.
 -Type II light distribution.
 -20° x 70° beam angle (NB)
 -Beam diameter: 120 FT @ 100 FT, 160 FT @ 130 FT, 180 FT @ 150 FT
 -Standard hanger bracket for ease of installation; wiring can be completed by mounting the bracket ahead of the luminaire. Three wiring luminaire only the bracket using quick connection system. Five mounting the luminaire by tightening the bracket then not wires (PWL) version only.
 -The luminaire may be configured with numerous options and multiple standard finishes. Not all options are available in all configurations. Consult factory for more information about configuration and details to build your light.
 -Product meets Bay Area Air Quality Management Act (BAAQMD) requirements within AB94.
 -5-year warranty.

Photometric data: Beam angle 20° x 70°, beam diameter 120 FT @ 100 FT, 160 FT @ 130 FT, 180 FT @ 150 FT.

Technical drawings: Front view, side view, top view, bottom view, detail of mounting bracket.


Performance in Lighting - 3021 Keys Pointe - Corning, Georgia 30073 - USA - voice 778.822.2115 - info.us@igl.com
 www.performanceinlighting.com

ZFT430-FT LED

115-1283

SP1

we-ef



Description: Post top luminaire with shielded light source and canopy highlight feature. IP66. Class I. IK09. Marine grade, die-cast aluminum alloy. SCE superior corrosion protection including PCS hardware. Silicone COCOP Controlled Compression Gasket. PHMMA main lens. CAD-optimized indirect optics for superior illumination and glare control. Integral driver in thermally separated compartment. Factory-installed LED circuit board. 0-10V Dimming comes standard with luminaire. Luminaire is factory-sealed and does not need to be opened during installation. Recommended mounting height 10-20 ft. Specify product with 7 digit product code - Finish Color. Accessories, such as mounting, optical, and electrical, must be specified separately. Example XXX-XXXX-9004 (Black) - XXX-XXXX (Accessory 1)

Beam Type: symmetric distribution [C80]

Light Source: LED FT 37W (9000K)

CRI: 80

Gear Type: electronic gear

Nominal Luminous Flux (lm): 6300 lm
 LEDs: 7
 Total Lumens: 6300 lm
 T₁: 25 °C

Delivered Lumens Flux (lm): 3914.7 lm
 Total Lumens: 3914.7 lm
 T_a: 25 °C

Rated Input Power: 42 W


WE-EF LIGHTING USA LLC
 One Superior Industrial - 4117 161 Street - Weymouth MA 01988 USA | Tel: +1 724 742 0020 | info.us@we-ef.com | www.usa.we-ef.com | 00-00-2023 1832
 Technical modifications and errors accepted

GARDCO PureForm

by @ignify

Site & Area

SB1/A



Gardco PureForm LED bollard PBL integrates a sleek, low profile design, extraordinary light output, and energy savings into an innovative pedestrian scale luminaire. PureForm bollard features a high performance optical system designed to achieve wide spacings and full cutoff performance. Three heights available for a customized look. IP66 optics ensure dust or moisture will never interfere with performance.

Ordering guide

Profile	Height	Beam Angle	Optical Distribution	Emergency	Voltage	Mounting	Dimensions	Weight	Material	Finish	Notes
PBL	36"	Standard	Standard	Optional	120V	Surface	12.5" x 12.5" x 2.5"	1.5 lbs	Aluminum	Black, White, Bronze, Dark Gray, Matte Gray	1. Not available in 347 or 48V. 2. Not available in 277V. 3. Not available with motor sensor. 4. Not available with photo sensor. 5. Not available with motion sensor. 6. Not available with motor sensor. 7. Not available with photo sensor. 8. Available only in 120V or 277V. 9. Not available with motor sensor. 10. Not available with photo sensor. 11. Not available with motion sensor. 12. Not available with photo sensor. 13. Not available with motion sensor. 14. Not available in 200V/NA.
PBL	42"	Standard	Standard	Optional	120V	Surface	12.5" x 12.5" x 2.5"	1.5 lbs	Aluminum	Black, White, Bronze, Dark Gray, Matte Gray	1. Not available in 347 or 48V. 2. Not available in 277V. 3. Not available with motor sensor. 4. Not available with photo sensor. 5. Not available with motion sensor. 6. Not available with motor sensor. 7. Not available with photo sensor. 8. Available only in 120V or 277V. 9. Not available with motor sensor. 10. Not available with photo sensor. 11. Not available with motion sensor. 12. Not available with photo sensor. 13. Not available with motion sensor. 14. Not available in 200V/NA.
PBL	48"	Standard	Standard	Optional	120V	Surface	12.5" x 12.5" x 2.5"	1.5 lbs	Aluminum	Black, White, Bronze, Dark Gray, Matte Gray	1. Not available in 347 or 48V. 2. Not available in 277V. 3. Not available with motor sensor. 4. Not available with photo sensor. 5. Not available with motion sensor. 6. Not available with motor sensor. 7. Not available with photo sensor. 8. Available only in 120V or 277V. 9. Not available with motor sensor. 10. Not available with photo sensor. 11. Not available with motion sensor. 12. Not available with photo sensor. 13. Not available with motion sensor. 14. Not available in 200V/NA.


1. Extended lead times apply. Contact factory for details. 2. Not available in 200V/NA. 3. Not available with motor sensor. 4. Not available with photo sensor. 5. Not available with motion sensor. 6. Not available with motor sensor. 7. Not available with photo sensor. 8. Available only in 120V or 277V. 9. Not available with motor sensor. 10. Not available with photo sensor. 11. Not available with motion sensor. 12. Not available with photo sensor. 13. Not available with motion sensor. 14. Not available in 200V/NA.

GARDCO SoftView

by @ignify

Garage & Canopy

CP1



Gardco SoftView LED parking garage luminaires feature edge lit technology, providing visual comfort with minimal glare to enhance the user experience. An added uplight feature reduces the cave effect for an increased sense of security. SoftView features multiple optical distributions, lumen packages and mounting options providing you with the ideal solution for your garage lighting and low bay needs. Optional emergency battery backup available for path of egress lighting and is integral to the luminaire.

Ordering guide

Profile	Height	Beam Angle	Optical Distribution	Emergency	Voltage	Mounting	Dimensions	Weight	Material	Finish	Notes
CP1	36"	Standard	Standard	Optional	120V	Surface	12.5" x 12.5" x 2.5"	1.5 lbs	Aluminum	Black, White, Bronze, Dark Gray, Matte Gray	1. Not available in 347 or 48V. 2. Not available in 277V. 3. Not available with motor sensor. 4. Not available with photo sensor. 5. Not available with motion sensor. 6. Not available with motor sensor. 7. Not available with photo sensor. 8. Available only in 120V or 277V. 9. Not available with motor sensor. 10. Not available with photo sensor. 11. Not available with motion sensor. 12. Not available with photo sensor. 13. Not available with motion sensor. 14. Not available in 200V/NA.
CP1	42"	Standard	Standard	Optional	120V	Surface	12.5" x 12.5" x 2.5"	1.5 lbs	Aluminum	Black, White, Bronze, Dark Gray, Matte Gray	1. Not available in 347 or 48V. 2. Not available in 277V. 3. Not available with motor sensor. 4. Not available with photo sensor. 5. Not available with motion sensor. 6. Not available with motor sensor. 7. Not available with photo sensor. 8. Available only in 120V or 277V. 9. Not available with motor sensor. 10. Not available with photo sensor. 11. Not available with motion sensor. 12. Not available with photo sensor. 13. Not available with motion sensor. 14. Not available in 200V/NA.
CP1	48"	Standard	Standard	Optional	120V	Surface	12.5" x 12.5" x 2.5"	1.5 lbs	Aluminum	Black, White, Bronze, Dark Gray, Matte Gray	1. Not available in 347 or 48V. 2. Not available in 277V. 3. Not available with motor sensor. 4. Not available with photo sensor. 5. Not available with motion sensor. 6. Not available with motor sensor. 7. Not available with photo sensor. 8. Available only in 120V or 277V. 9. Not available with motor sensor. 10. Not available with photo sensor. 11. Not available with motion sensor. 12. Not available with photo sensor. 13. Not available with motion sensor. 14. Not available in 200V/NA.

1. Not available in 347 or 48V. 2. Not available in 277V. 3. Not available with motor sensor. 4. Not available with photo sensor. 5. Not available with motion sensor. 6. Not available with motor sensor. 7. Not available with photo sensor. 8. Available only in 120V or 277V. 9. Not available with motor sensor. 10. Not available with photo sensor. 11. Not available with motion sensor. 12. Not available with photo sensor. 13. Not available with motion sensor. 14. Not available in 200V/NA.

GENERAL NOTES

- MOUNTING HEIGHT (MH) LISTED IN LUMINAIRE SCHEDULE SHALL BE FROM ABOVE GROUND LEVEL TO BOTTOM OF COMPLETE EXPOSED FIXTURE UNLESS OTHERWISE NOTED.
- ALL EXTERIOR MOUNTED LIGHTING SHALL BE CONTROLLED BY PHOTOCONTROL OR ASTRONOMIC TIME-CLOCK SCHEDULING AND SHALL BE TURNED OFF WHEN DAYLIGHT IS PRESENT.
- DURING EMERGENCY CONDITIONS EMERGENCY LIGHTING CIRCUITS SHALL BYPASS ALL LIGHTING CONTROLS IN ORDER TO ENERGIZE ALL CONNECTED LUMINAIRES AT FULL CAPACITY. PROVIDE UL924 RELAYS AS REQUIRED TO BYPASS AREA CONTROLS.
- EMERGENCY PATHWAY EGRESS LIGHTING: EMERGENCY LIGHTING FACILITIES SHALL BE ARRANGED TO PROVIDE INITIAL ILLUMINATION THAT IS NOT LESS THAN AN AVERAGE OF 1 FOOT-CANDLE. (IBC 1008.3.5)

PHOTOMETRIC NOTES

- PHOTOMETRIC CALCULATIONS BASED ON AVAILABLE IES FILE FROM FIXTURE MANUFACTURER (OR EQUIVALENT). FIXTURE SUBSTITUTIONS MAY COMPROMISE FOOT CANDLE LEVELS.
- PHOTOMETRIC CALCULATIONS MEASURED AT FLOOR LEVEL FROM CEILING HEIGHT OR MOUNTING HEIGHT (MH) NOTED IN LUMINAIRE SCHEDULE.

SHEET INDEX

DRAWING	DESCRIPTION
E2.0	COVER SHEET, LUMINAIRE SCHEDULE, NOTES, & FIXTURE DETAILS
E2.1	SITE PLAN - LIGHTING
E2.2	SITE PLAN - PHOTOMETRICS

SITE LUMINAIRE SCHEDULE

CALLOUT	SYMBOL	MOUNTING	DESCRIPTION	MODEL	VOLTAGE	TYPE	CRI / CCT	LAMPING	WATTAGE
CP1	○	SURFACE	CARPOR LIGHT - TYPE 5 - B1 U0 G1	GARDCO: SVPG A01 830 5CD [MOUNTING] UNV	208	0-10V DIMMING	80 / 3000K	(1) 21W LED	21
SB1	•	3' BOLLARD	BOLLARD - TYPE 5 - B1 U0	GARDCO: PUREFORM BOLLARD / PBL 36 14L 100 WW-G2 5 UNV	208	0-10V DIMMING	70 / 3000K	(1) 6W LED	6
SB1A	•	3' BOLLARD	BOLLARD - TYPE 3 - B0 U0	GARDCO: PUREFORM BOLLARD / PBL 36 14L 100 WW-G2 3 UNV	208	0-10V DIMMING	70 / 3000K	(1) 6W LED	6
SP1	•	16' POLE	POST TOP LIGHT - TYPE 5 - B2 U3 G2	WE-EF: ZFT434LED / 115-1283	208	0-10V DIMMING	80 / 3000K	(1) 42W LED	42
SW1	•	SURFACE	EXTERIOR SCNOCNE - STAIRS - NB UP / TYPE II DOWN - MH 10'	PERFORMANCE IN LIGHTING: AMON / 070274	120	0-10V DIMMING	80 / 3000K	(1) 37W LED	37
WP1	•	SURFACE	WALL PACK - PARKING - TYPE III - B2 U0 G2 - MH 18'	GARDCO: PUREFORM COMFORT OPTICS / PWS 140L 1150 WW-G2 3 X UNV	120	AS NEEDED	70 / 3000K	(1) 52W LED	52

- CONTRACTOR TO FURNISH AND INSTALL ALL FIXTURES.
- FIXTURE FINISHES TO BE COORDINATED WITH ARCHITECT/ID.

REVISIONS	DESCRIPTION	DATE	BY

ROBISON ENGINEERING, INC

19401 40TH AVE W, SUITE 302
 LYNNWOOD, WA 98036
 206-864-2847

JAMES A. YARBRO

PROFESSIONAL ENGINEER
 06/26/2023

DRAWN:	DESIGNED:	CHECKED:	APPROVED:

PROJECT: EAST TOWN CROSSING MULTIFAMILY DEVELOPMENT PIONEER WAY & SHAW RD. PUYALLUP, WA

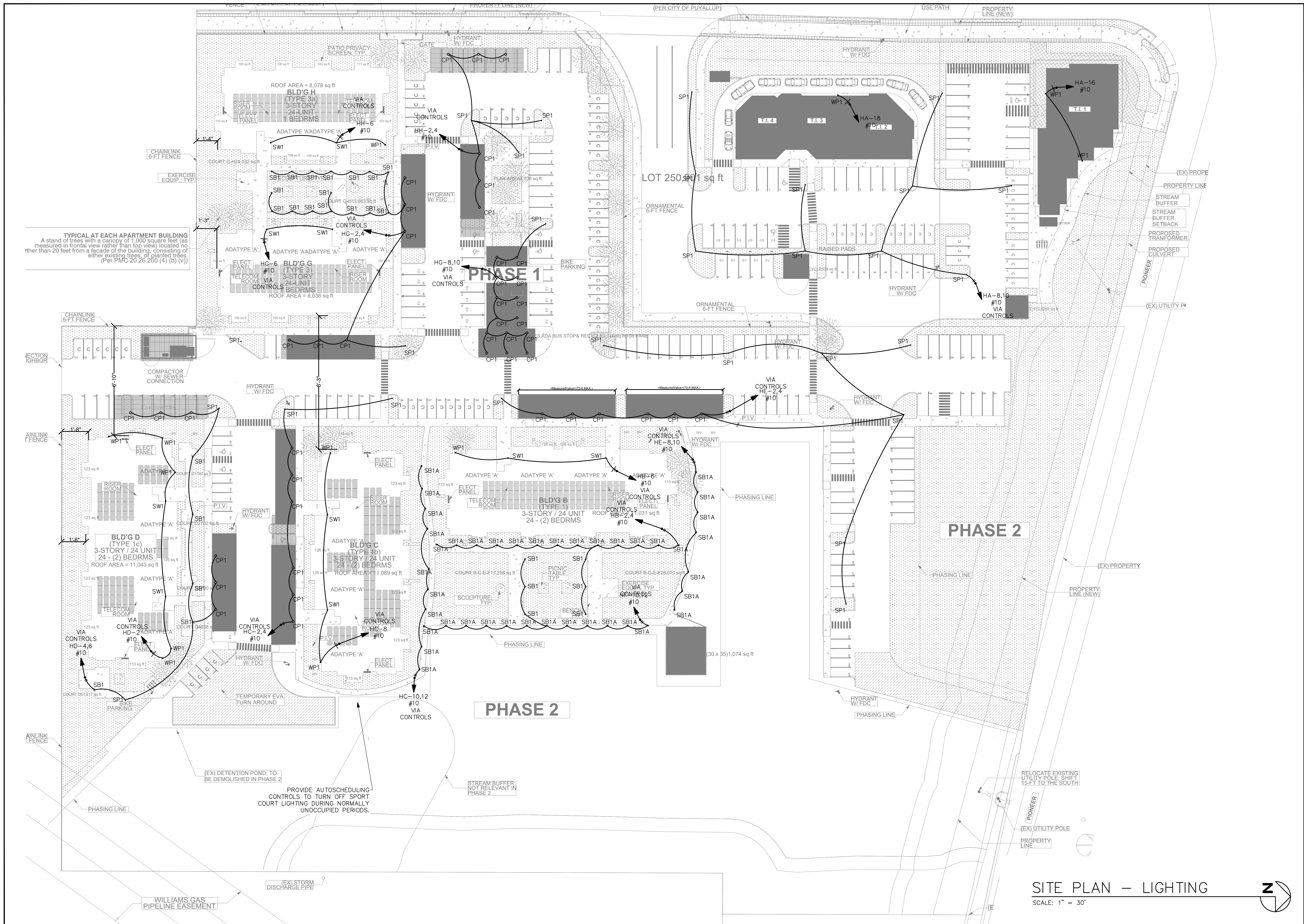
ROBISON ENGINEERING, INC

19401 40TH AVE W, SUITE 302
 LYNNWOOD, WA 98036
 PHON: 206-864-3343

DATE: 06-26-2023

SHEET TITLE: LUMINAIRE SCHEDULE, NOTES, & FIXTURE DETAILS

SHEET NO. E2.0

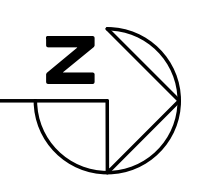


TYPICAL AT EACH APARTMENT BUILDING
 A stand of trees with a canopy of 1,000 square feet (as measured in frontal view rather than top view) located no further than 20 feet from a facade of the building, consisting of either existing trees, or planted trees.
 (Per PMC 20.26.200 (4) (b) (v))

PROVIDE AUTOSCHEDULING CONTROLS TO TURN OFF SPORT COURT LIGHTING DURING NORMALLY UNOCCUPIED PERIODS.

STREAM BUFFER NOT RELEVANT IN PHASE 2

SITE PLAN - LIGHTING
 SCALE: 1" = 30'



REVISIONS	DESCRIPTION
NO.	DATE



DRAWN:	DESIGNED:	CHECKED:	APPROVED:
--------	-----------	----------	-----------

PROJECT: EAST TOWN CROSSING
MULTIFAMILY DEVELOPMENT
PIONEER WAY & SHAW RD. PUYALLUP, WA

ROBISON ENGINEERING, INC.
 19401 40TH AVE W, SUITE 302
 LYNNWOOD, WA 98036
 PHON: 206-864-3343

DATE:
 06-26-2023

SHEET TITLE:
 SITE PLAN - LIGHTING

SHEET NO.
E2.1



TYPICAL AT EACH APARTMENT BUILDING
 A stand of trees with a canopy of 1,000 square feet (as measured in frontal view rather than top view) located no further than 20 feet from a facade of the building, consisting of either existing trees, or planted trees.
 (Per PMC 20.26.200 (4) (b) (v))

SITE PLAN – PHOTOMETRICS
 SCALE: 1" = 30'

REVISIONS	DESCRIPTION
NO.	DATE



DRAWN:	DESIGNED:	CHECKED:	APPROVED:

PROJECT: EAST TOWN CROSSING
MULTIFAMILY DEVELOPMENT
PIONEER WAY & SHAW RD. PUYALLUP, WA

ROBISON ENGINEERING, INC.

DATE:
 06-26-2023

SHEET TITLE:
 SITE PLAN – PHOTOMETRICS

SHEET NO.
E2.2