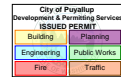


PRROW20230964



NAME OF STREET: 24<sup>th</sup> St NW

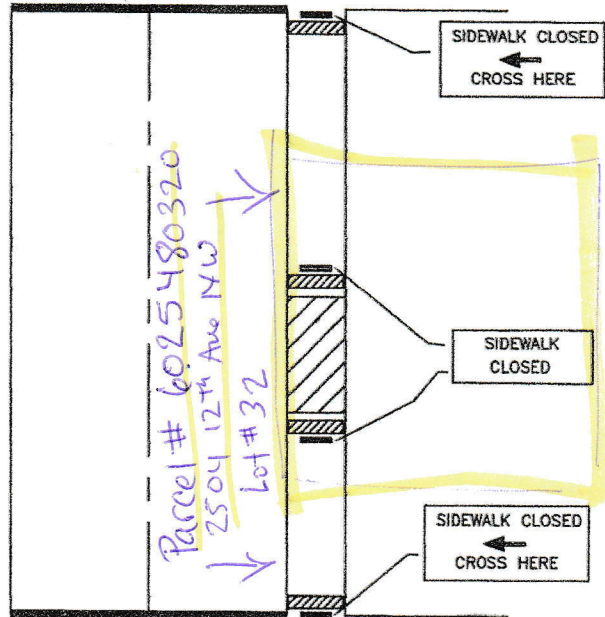
**CLOSURE ALLOWED:**

Monday - Friday  
9AM - 3PM

Call communications center at  
253-287-4456 on day of closure.  
Request a job start inspection  
through the CityView portal.

The City-issued permit packet  
shall be posted at the job site and  
available to inspectors at all times.

NAME OF STREET: 12<sup>th</sup> Ave NW



**NOTES:**

- 1 GIVE 24 HR NOTICE TO BUSINESS/RESIDENTS IMPACTED BY CLOSURE
- 2 "NO PARKING" EASELS MAY BE REQUIRED IN IMMEDIATE AREA OF WORK ZONE
- 3 CALL COMM CENTER DAY OF CLOSURE 841-5431
- 4 KEEP CLOSURE TO MINIMUM AMOUNT OF TIME AS POSSIBLE TO COMPLETE JOB
- 5 FLAGGERS MAYBE NEEDED TO ASSIST W/ CROSSING PEDESTRIANS NEAR SCHOOLS OR HIGH PEDESTRIAN USE AREAS



**CITY OF  
PUYALLUP  
TRAFFIC  
ENGINEERING  
DIVISION**

**SIDEWALK CLOSURE**

DRAWN J. HUNTER	PLOTTING SCALE NTS/ 1=1	DATE APPROVED 04-03	REVISED	TCP STANDARD
FILE NAME I:\DRAWINGS\PUBLIC WORKS\TRAFFIC\TCP	CHECKED BY M. FORD	REVISED BY		NO. 6

**CLOSURE ALLOWED:**

Monday - Friday  
9AM - 3PM

Call communications center at  
253-287-4456 on day of closure.  
Request a job start inspection  
through the CityView portal.

The City-issued permit packet  
shall be posted at the job site and  
available to inspectors at all times.

11' travel lane width  
shall be maintained at  
all times. Otherwise,  
City TCP standard 7  
shall be implemented.

NAME OF STREET:

12TH AVE NW

**NOTES:**

- 1 FOR SHOULDER WORK ZONES
- 2 VEHICLE TO PROTECT WORKZONE
- 3 TRAFFIC CONTROL DEVICES SHALL BE 28" RETROREFLECTIVE CONES
- 4 TAPER LENGTH EQUALS WIDTH OF OFFSET  
TIMES SPEED LIMIT SQUARED DIVIDED BY 60

$$L = \frac{WS^2}{60}$$

- 5 SIGN SPACING SHALL BE 100 FEET WHEN  
SPEED LIMIT IS 30 MPH OR LESS
- 6 SIGN SPACING SHALL BE 350 FEET WHEN  
SPEED LIMIT IS GREATER THAN 30 MPH
- 7 CALL COMM CENTER DAY OF CLOSURE 841-5431  
7.1 CLOSURE FOR WEEKDAYS ONLY
- 8 DISTANCE BETWEEN CONES EQUALS SPEED LIMIT  
IN UNITS OF FEET
9. TRAVEL LANE WIDTH MUST BE 11'(FT) MINIMUM

PRROW20230964

END  
ROAD WORK



500'

SEE NOTE #8

SEE NOTE #4  
L/3

100'



100'



**CITY OF  
PUYALLUP  
TRAFFIC  
ENGINEERING  
DIVISION**

**SHOULDER CLOSURE**

DRAWN  
J. HUNTER

PLOTTING SCALE  
NTS/ 1=1

DATE APPROVED  
04-03

REVISED  
02/10/11

TCP  
STANDARD

FILE NAME

I:\DRAWINGS\PUBLIC WORKS\TRAFFIC\TCP

CHECKED BY  
M. FORD

REVISED BY  
S. TANDLE

NO. 11

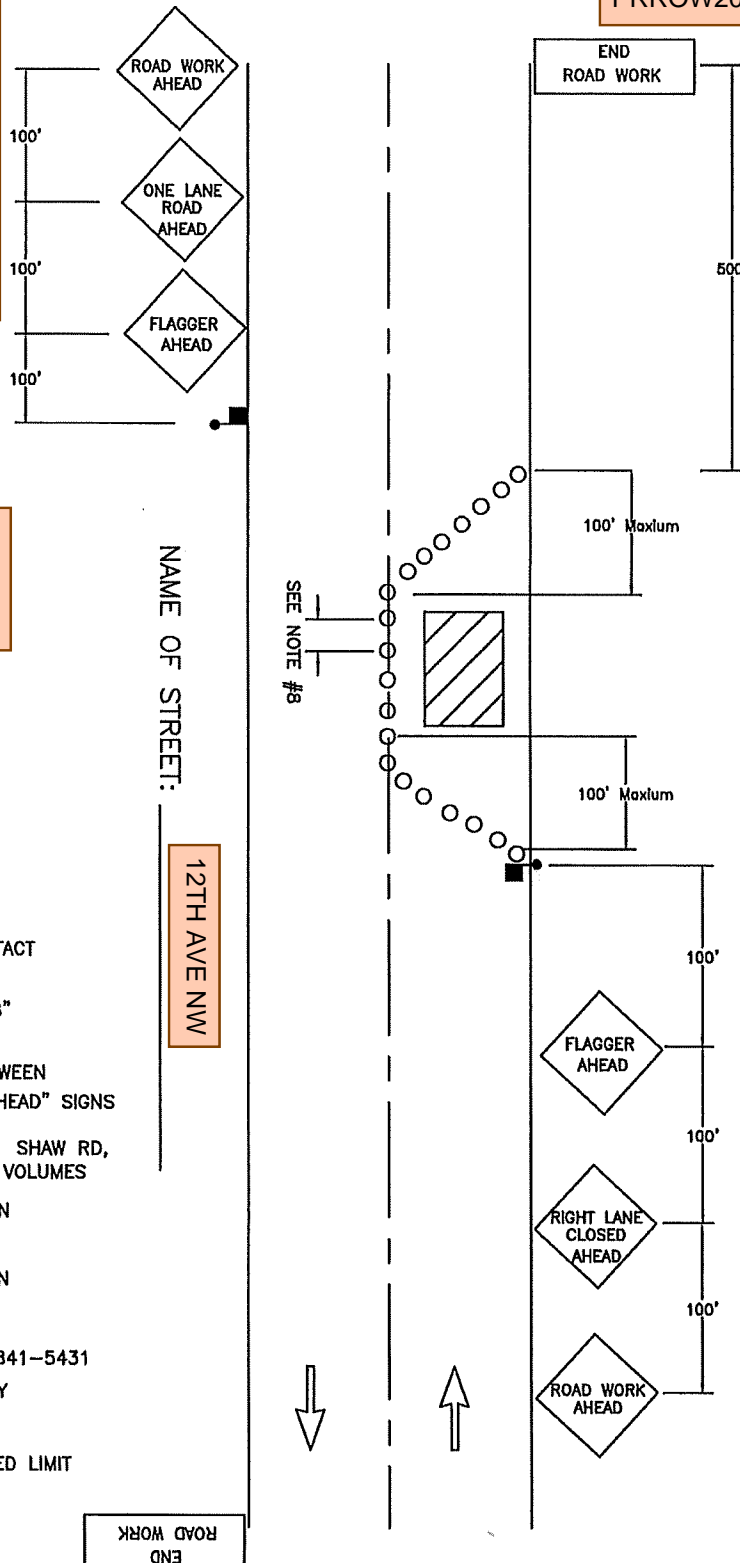
**CLOSURE ALLOWED:**

Monday - Friday  
9AM - 3PM

Call communications center at  
253-287-4456 on day of closure.  
Request a job start inspection  
through the CityView portal.

The City-issued permit packet  
shall be posted at the job site and  
available to inspectors at all times.

PRROW20230964



If 11' travel lane width can be  
maintained, use City TCP  
standard 11. Otherwise, TCP  
standard 7 shall be implemented.

**NOTES:**

- 1 FOR TWO-WAY TRAFFIC WORK ZONES
- 2 FLAGGERS SHALL REMAIN IN RADIO CONTACT AT ALL TIMES
- 3 TRAFFIC CONTROL DEVICES SHALL BE 28" RETROREFLECTIVE CONES
- 4 USE "BE PREPARED TO STOP" SIGN BETWEEN "FLAGGER AHEAD" AND "LANE CLOSED AHEAD" SIGNS ON HIGH VOLUME ROADS, SUCH AS:  
43RD AVE SE, 9TH ST SW, 5TH ST SW, SHAW RD, AND OTHER STREETS WITH COMPARABLE VOLUMES
- 5 SIGN SPACING SHALL BE 350 FEET WHEN SPEED LIMIT IS GREATER THAN 30 MPH
- 6 SIGN SPACING SHALL BE 100 FEET WHEN SPEED LIMIT IS 30 MPH OR LESS
- 7 CALL COMM CENTER DAY OF CLOSURE 841-5431
  - 7.1 CLOSURE FOR WEEKDAYS ONLY
  - 7.2 TIMES: 9:00 AM TO 3:00 PM
- 8 DISTANCE BETWEEN CONES EQUALS SPEED LIMIT IN UNITS OF FEET



**CITY OF  
PUYALLUP  
TRAFFIC  
ENGINEERING  
DIVISION**

## LANE CLOSURE ON TWO-LANE ROAD USING FLAGGERS

DRAWN  
J. HUNTER

PLOTTING SCALE  
NTS/ 1=1

DATE APPROVED  
04-03

REVISED  
09-30-09

TCP  
STANDARD  
NO. 7

FILE NAME  
I:\DRAWINGS\PUBLIC WORKS\TRAFFIC\TCP

CHECKED BY  
M. FORD

REVISED BY  
S. TANDLE