

City of Puyallup Development & Permitting Services ISSUED PERMIT	
Building	Planning
Engineering	Public Works
Fire	Traffic

Approximately: 240CY Export & 240CY Import & 2 rolls of mirafi.

All areas of vegetation outside of silt fencing are not to be disturbed

Note: Gravel and all BMPs will be removed at the end of construction and site will be stabilized

**APPROVED**  
 BY: *[Signature]*  
 CITY OF PUYALLUP  
 ENGINEERING SERVICES  
 DATE: 7/19/2023

**NOTE:** THIS APPROVAL IS VOID AFTER 180 DAYS FROM APPROVAL DATE. THE CITY WILL NOT BE RESPONSIBLE FOR ERRORS AND/OR OMISSIONS ON THESE PLANS. FIELD CONDITIONS MAY DICTATE CHANGES TO THESE PLANS AS DETERMINED BY THE CITY ENGINEER



Temp fencing

Gravel fill

Silt fencing

Parking Entrance

Storm Drain Barrier

Elevation: 118ft

Elevation: 108ft

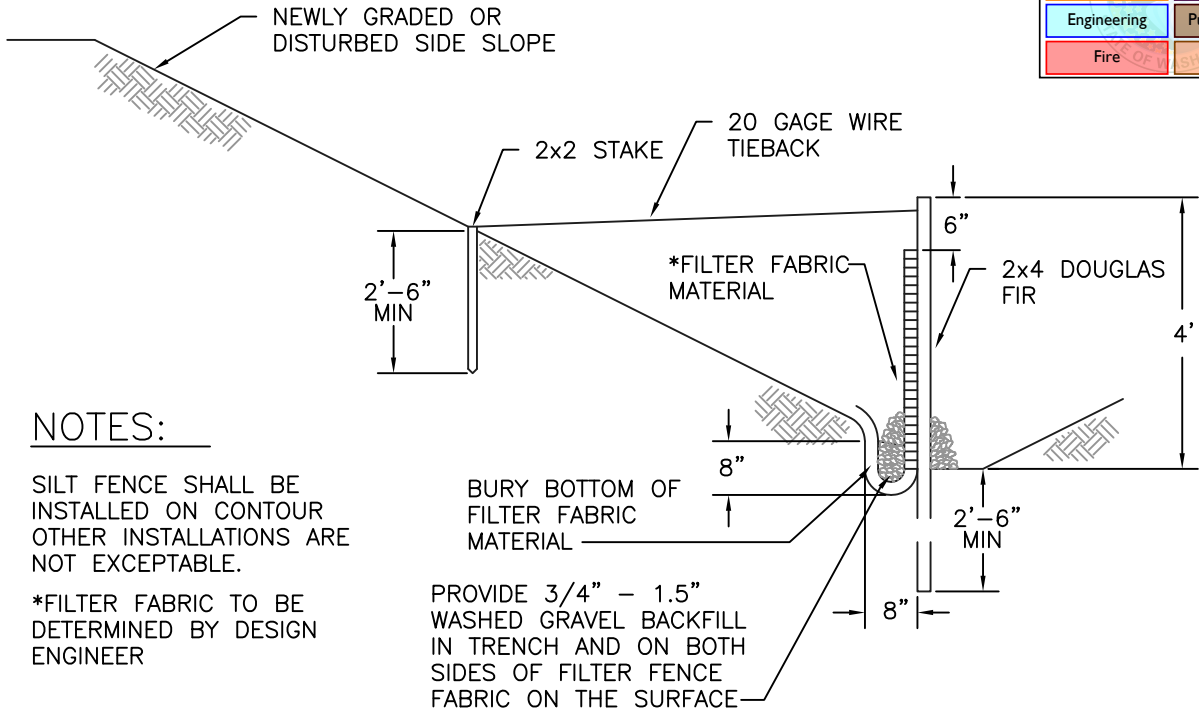


Storm Drain Protection

- 1. Storm drain protection, silt fencing to be implemented
- 2. Set up temp fencing
- 3. Clear, grade, and place gravel

City of Puyallup Development & Permitting Services ISSUED PERMIT	
Building	Planning
Engineering	Public Works
Fire	Traffic



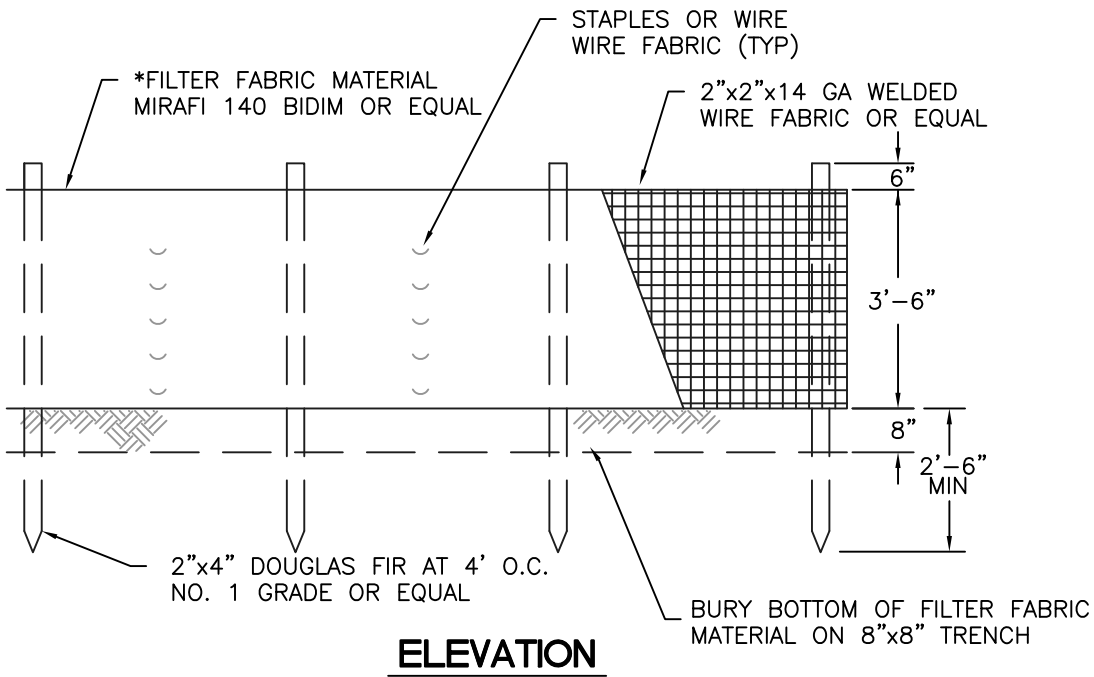


**NOTES:**

SILT FENCE SHALL BE INSTALLED ON CONTOUR OTHER INSTALLATIONS ARE NOT EXCEPTABLE.  
 \*FILTER FABRIC TO BE DETERMINED BY DESIGN ENGINEER

PROVIDE 3/4" - 1.5" WASHED GRAVEL BACKFILL IN TRENCH AND ON BOTH SIDES OF FILTER FENCE FABRIC ON THE SURFACE

**TYPICAL CROSS SECTION**



**ELEVATION**



**CITY OF PUYALLUP**

DEVELOPMENT ENGINEERING and PUBLIC WORKS DEPARTMENTS

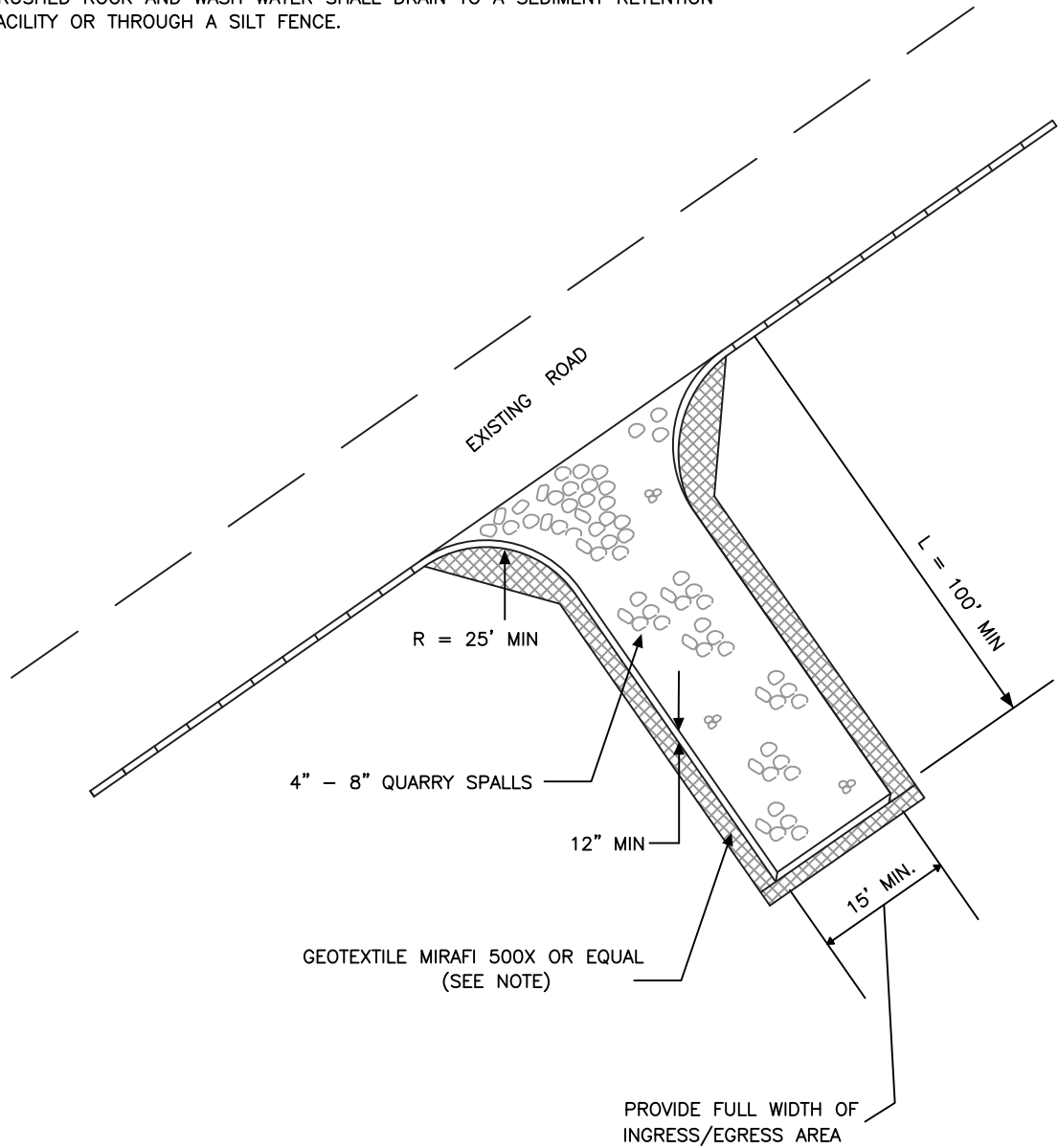
**SILTATION FENCE**

<small>DRAWN BY</small> LINDA LANSING	<small>CHECKED BY</small> LINDA LIAN	<small>APPROVED BY</small> COLLEEN HARRIS	<small>REVISED BY</small> XXXX	<small>CITY STANDARD</small>  02.03.02
<small>FILE NAME</small> F:\DWG\COMMON\STDS\CITY\2009\02_SD\02.03.02	<small>DATE APPROVED</small> 09/01/1992	<small>DATE REVISED</small> 06/01/2003	<small>SCALE</small> NTS	

City of Puyallup Development & Permitting Services ISSUED PERMIT			
Building	Planning	Engineering	Public Works
Fire	Traffic		

**NOTE:**

1. GEOTEXTILE MIRAFI 500 X OR APPROVED EQUAL SHALL BE PLACED UNDER THE ENTIRETY OF THE TEMPORARY ENTRANCE.
2. ADDITIONAL ROCK SHALL BE ADDED PERIODICALLY TO MAINTAIN PROPER FUNCTION OF THE PAD.
3. IF THE PAD DOES NOT ADEQUATELY REMOVE THE MUD FROM THE VEHICLE'S WHEELS, THE WHEELS SHALL BE HOSED OFF BEFORE THE VEHICLE ENTERS A PAVED STREET. THE WASHING SHALL BE DONE ON AN AREA COVERED WITH CRUSHED ROCK AND WASH WATER SHALL DRAIN TO A SEDIMENT RETENTION FACILITY OR THROUGH A SILT FENCE.



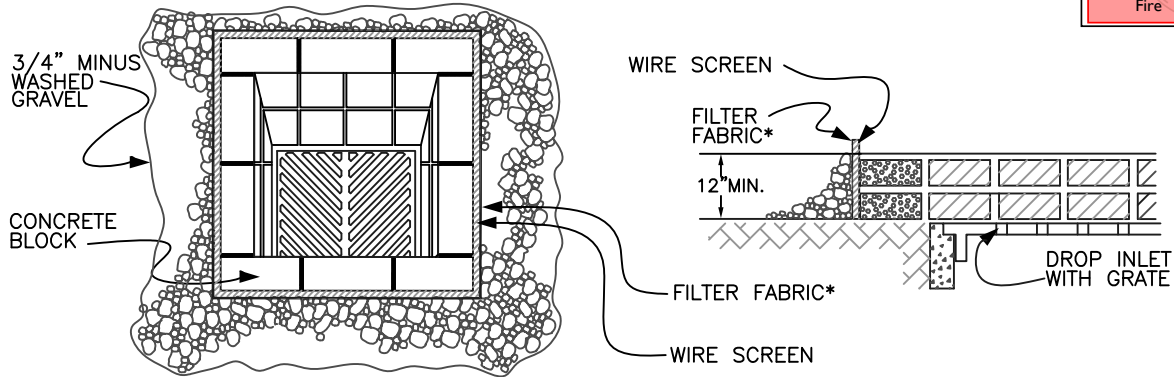
**CITY OF  
PUYALLUP**

DEVELOPMENT ENGINEERING and  
PUBLIC WORKS DEPARTMENTS

**TEMPORARY CONSTRUCTION  
ENTRANCE**

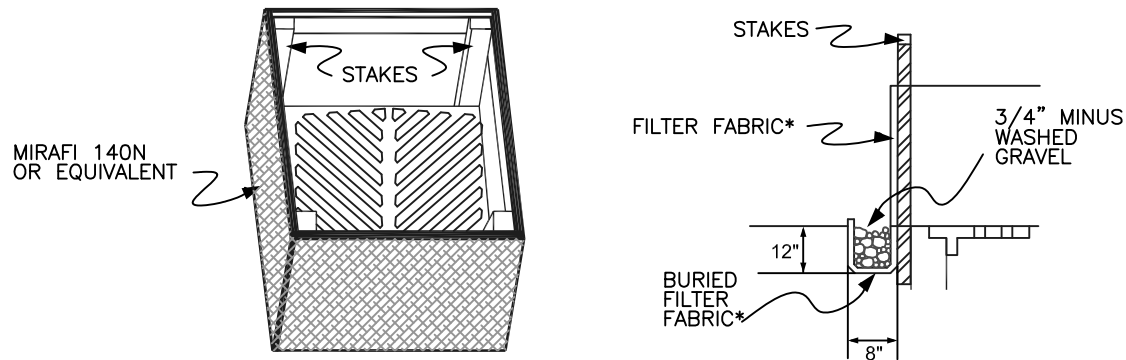
<small>DRAWN BY</small> JIM ERWIN-SVOBODA	<small>CHECKED BY</small> LINDA LIAN	<small>APPROVED BY</small> COLLEEN HARRIS	<small>REVISED BY</small> XXXX	<small>CITY STANDARD</small>
<small>FILE NAME</small> F:\DWG\COMMON\STDS\CITY\2009\05_GRD\05.01\05.01.01	<small>DATE APPROVED</small> 07/01/2009	<small>DATE REVISED</small> XX/XX/XX	<small>SCALE</small> 1:40	<b>05.01.01</b>

## BLOCK AND GRAVEL FILTER



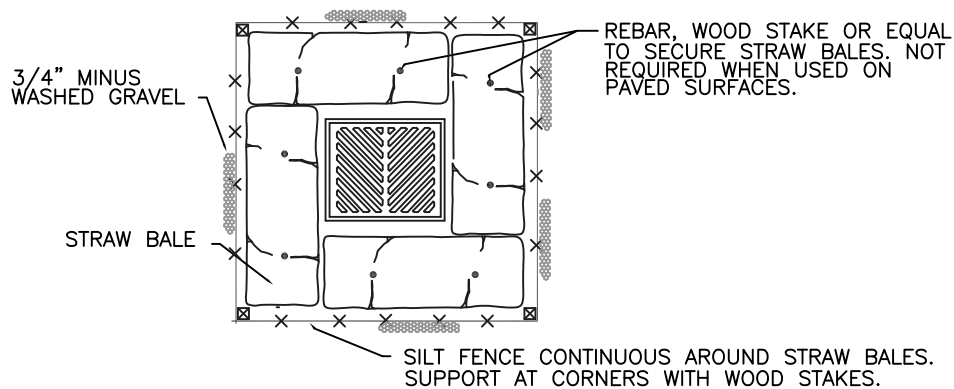
\* MIRAFI 140-N OR EQUIVALENT

## FILTER FABRIC FENCE



\* MIRAFI 140-N OR EQUIVALENT

## STRAW BALE BARRIER



CITY OF  
PUYALLUP

DEVELOPMENT ENGINEERING and  
PUBLIC WORKS DEPARTMENTS

## STORM DRAIN BARRIERS

DRAWN BY LINDA LANSING	CHECKED BY LINDA LIAN	APPROVED BY COLLEEN HARRIS	REVISED BY XXXX	CITY STANDARD
FILE NAME F:\DWG\COMMON\STDS\CITY\2009\02_SD\02.03.05	DATE APPROVED 09/01/1992	DATE REVISED 06/01/2003	SCALE NTS	02.03.05