

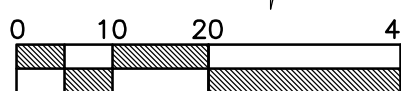
A PORTION OF SECTION 10, TOWNSHIP 19N, RANGE 4E, W.M., PIERCE COUNTY

COPPERBERRY CONDOMINIUMS

TESC PLAN

PRFUP20231150

1"=20'



DEMO LEGEND:

	EXISTING ASPHALT
	EXISTING CONCRETE TO REMAIN
	EXISTING ASPHALT REMOVAL
	EXISTING CURB TO REMAIN
	EXISTING EDGE OF PAVEMENT

TESC LEGEND:

	CATCH BASIN PROTECTION
	PERIMETER PROTECTION
	CLEARING LIMITS
	SAWCUT
	CONSTRUCTION FENCE

EROSION CONTROL CALLOUTS:

- CONTRACTOR TO INSTALL SILT FENCE AROUND PERIMETER OF SITE AS REQUIRED TO PREVENT SILT-LADEN RUNOFF FROM LEAVING SITE, AND AS DIRECTED BY INSPECTOR. SEE DETAIL ON SHEET C7.
- CONTRACTOR TO INSTALL STORM DRAIN INLET PROTECTION AT ALL DOWNSTREAM INLET LOCATIONS AS REQUIRED TO PREVENT SILT-LADEN WATER FROM ENTERING STORM DRAINAGE SYSTEM. SEE DETAIL ON SHEET C7.
- TEMPORARY STOCKPILE LOCATION. ADJUST SIZE AND LOCATION OF AREA AS NEEDED DURING CONSTRUCTION.
- CONSTRUCTION ENTRANCE. SEE DETAIL ON SHEET C7.

CONSTRUCTION SEQUENCE

- FLAG ALL DISTURBED AND/OR CLEARING LIMITS.
- CALL THE UTILITY LOCATE SERVICE TO VERIFY LOCATION OF ANY EXISTING UTILITIES TWO (2) WORKING DAYS PRIOR TO START OF CONSTRUCTION.
- IDENTIFY AND PROTECT ALL EXISTING VEGETATION TO REMAIN, AS REQUIRED.
- PERFORM CLEARING AND GRADING REQUIRED FOR INSTALLATION OF PERIMETER CONTROLS.
- INSTALL PERIMETER RUNOFF CONTROLS INCLUDING SILT FENCING AND CONSTRUCTION FENCING.
- INSTALL STORM DRAINAGE PROTECTION.
- CLEAR AND STABILIZE CONSTRUCTION ACCESS, IF REQUIRED.
- COMPLETE ALL REQUIRED STOCKPILING, SITE CLEARING, AND GRADING.
- INSTALL SITE UTILITIES.
- COMPLETE SITE PAVING.
- COMPLETE FINAL GRADING, STABILIZATION, AND LANDSCAPING.
- REMOVE SEDIMENT AND EROSION CONTROL MEASURES.

HAULING/SILTATION CONTROL NOTES:

- PUBLIC STREETS ARE TO BE KEPT CLEAN OF DIRT AND DEBRIS GENERATED BY WORK. CLEANUP SHALL BE BY SWEEPING AND/OR OTHER APPROVED METHODS ON A DAILY BASIS.
- CONTRACTOR SHALL PROVIDE SILT BAGS OR OTHER SILTATION CONTROL MEASURES ON EXISTING CATCH BASIN(S) IN PROXIMITY OF WORK WHICH HAVE POTENTIAL TO RECEIVE SURFACE RUNOFF FROM THE WORK AREA OR ANY LOCATIONS THAT MAY BE DESIGNATED BY THE AUTHORITY HAVING JURISDICTION DURING THE COURSE OF THE WORK.
- EFFORTS SHALL BE MADE DURING CONSTRUCTION ACTIVITIES TO STABILIZE ALL DISTURBED AREAS AS QUICKLY AS POSSIBLE TO MINIMIZE EROSION.
- ITEMS FOR DEMOLITION ARE DEPICTED PER DESIGN DRAWINGS. CONTRACTOR TO VERIFY AND LOCATE ANY ITEMS FOR DEMOLITION PRIOR TO START OF CONSTRUCTION AND NOTIFY BARGHAUSEN CONSULTING ENGINEERS, INC. IMMEDIATELY OF ANY DISCREPANCIES.
- CONTRACTOR TO REVIEW AS-BUILT DRAWINGS IN PROJECT AREA AND REMOVE AND/OR RELOCATE ANY SITE APPURTENANCES IN PROJECT AREA THAT IMPACT THE PROJECT.



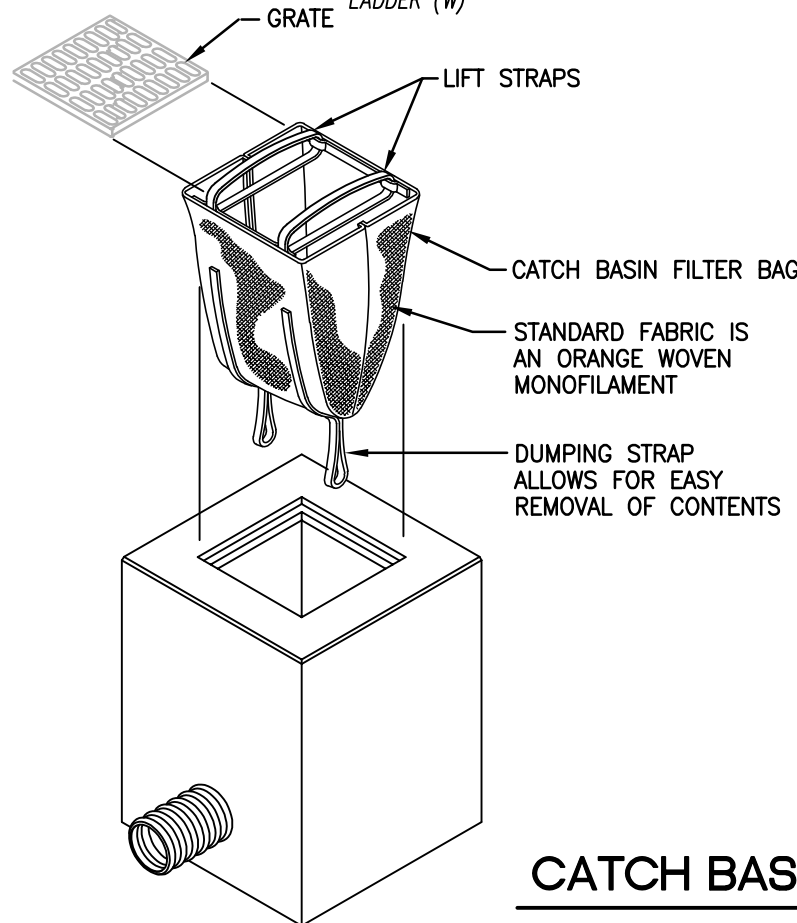
Know what's below.
Call before you dig.
Dial 811
Or Call 1-800-424-5555

UTILITY CONFLICT NOTE:

THE CONTRACTOR SHALL BE RESPONSIBLE FOR VERIFYING THE LOCATION, DIMENSION, AND DEPTH OF ALL EXISTING UTILITIES WHETHER SHOWN ON THESE PLANS OR NOT BY POTHOLING THE UTILITIES AND SURVEYING THE HORIZONTAL AND VERTICAL LOCATION PRIOR TO CONSTRUCTION. THIS SHALL INCLUDE CALLING UTILITY LOCATE @ 1-800-424-5555 AND THEN POTHOLING ALL OF THE EXISTING UTILITIES AT LOCATIONS OF NEW UTILITY CROSSINGS TO PHYSICALLY VERIFY WHETHER OR NOT CONFLICTS EXIST. LOCATIONS OF SAID UTILITIES AS SHOWN ON THESE PLANS ARE BASED UPON THE UNVERIFIED PUBLIC INFORMATION AND ARE SUBJECT TO VARIATION. IF CONFLICTS SHOULD OCCUR, THE CONTRACTOR SHALL CONSULT THE ENGINEER TO RESOLVE ALL PROBLEMS PRIOR TO PROCEEDING WITH CONSTRUCTION.

BMP MAINTENANCE NOTES:

- AREAS TO BE CLEARED, GRUBBED, AND EXPOSED AT ONE TIME SHALL BE KEPT TO THE SMALLEST AREA POSSIBLE.
- TEMPORARY GROUND COVER SHALL BE PLANTED OR A FILL TACKIFIER SPREAD OVER EXPOSED AREAS NOT BEING WORKED ON FOR 14 DAYS.
- TEMPORARY EROSION CONTROLS SHOULD NOT BE REMOVED BEFORE PERMANENT EROSION CONTROLS ARE IN-PLACE AND ESTABLISHED.
- ALL MEASURES TO CONTROL EROSION AND OTHER POLLUTANTS SHALL BE IN PLACE BEFORE ANY SAFETY MOVING OPERATIONS ARE INITIATED.
- ALL TEMPORARY EROSION CONTROL MEASURES SHALL BE CHECKED AND UPDATED, AS NEEDED, AT THE END OF EACH WORK WEEK AND IMMEDIATELY FOLLOWING EACH RAIN EVENT.



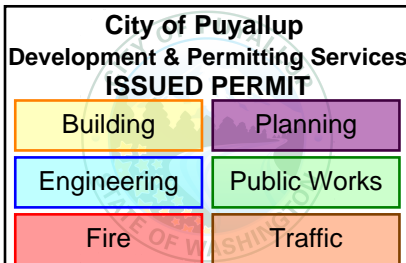
CATCH BASIN FILTER BAG

NOT TO SCALE

INSTALLATION AND MAINTENANCE GUIDELINES:

INSTALLATION: REMOVE THE GRATE FROM CATCH BASIN. IF USING OPTIONAL OIL ABSORBENTS; PLACE ABSORBENT PILLION IN UNIT. STAND THE GRATE ON END. MOVE THE TOP LIFTING STRAPS OUT OF THE WAY AND PLACE THE GRATE INTO THE CATCH BASIN FILTER BAG SO THAT THE GRATE IS BELOW THE TOP STRAPS AND ABOVE THE LOWER STRAPS. HOLDING THE LIFTING DEVICES, INSERT THE GRATE INTO THE INLET.

MAINTENANCE: REMOVE ALL ACCUMULATED SEDIMENT AND DEBRIS FROM VICINITY OF UNIT AFTER EACH STORM EVENT. AFTER EACH STORM EVENT AND AT REGULAR INTERVALS, LOOK INTO THE DANDY BAG. IF THE CONTAINMENT AREA IS MORE THAN 1/3 FULL OF SEDIMENT, THE UNIT MUST BE EMPTIED. TO EMPTY UNIT, LIFT THE UNIT OUT OF THE INLET USING THE LIFTING STRAPS AND REMOVE THE GRATE. IF USING OPTIONAL OIL ABSORBENTS; REPLACE ABSORBENT WHEN NEAR SATURATION.



APPROVED

BY _____
CITY OF PUYALLUP
DEVELOPMENT ENGINEERING

DATE _____

NOTE: THIS APPROVAL IS VOID AFTER TWO DAYS FROM APPROVAL DATE. THE CITY WILL NOT BE RESPONSIBLE FOR ERRORS AND/OR OMISSIONS ON THESE PLANS. FIELD CONDITIONS MAY DICTATE CHANGES TO THESE PLANS AS DETERMINED BY THE DEVELOPMENT ENGINEERING MANAGER.

Title:

For:

Scale:

Horizontal

Vertical

Horizontal

Vertical

N/A

Horizontal

Vertical

N/A

Horizontal

Vertical

N/A

Horizontal

Vertical

N/A

Horizontal

Vertical

N/A

Horizontal

Vertical

N/A

Horizontal

Vertical

N/A

Horizontal

Vertical

N/A

Horizontal

Vertical

N/A

Horizontal

Vertical

N/A

Horizontal

Vertical

N/A

Horizontal

Vertical

N/A

Horizontal

Vertical

N/A

Horizontal

Vertical

N/A

Horizontal

Vertical

N/A

Horizontal

Vertical

N/A

Horizontal

Vertical

N/A

Horizontal

Vertical

N/A

Horizontal

Vertical

N/A

Horizontal

Vertical

N/A

Horizontal

Vertical

N/A

Horizontal

Vertical

N/A

Horizontal

Vertical

N/A

Horizontal

Vertical

N/A

Horizontal

Vertical

N/A

Horizontal

Vertical

N/A

Horizontal

Vertical

N/A

Horizontal

Vertical

N/A

Horizontal

Vertical

N/A

Horizontal

Vertical

N/A

Horizontal

Vertical

N/A

Horizontal

Vertical

N/A

Horizontal

Vertical

N/A

Horizontal

Vertical

N/A

Horizontal

Vertical

N/A

Horizontal

Vertical

N/A

Horizontal

Vertical

N/A

Horizontal

Vertical

N/A

Horizontal

Vertical

N/A

Horizontal

Vertical

N/A

Horizontal

Vertical

N/A

Horizontal

Vertical

N/A

Horizontal

Vertical

N/A

Horizontal

Vertical

N/A

Horizontal

Vertical

N/A

Horizontal

Vertical

N/A

Horizontal

Vertical

N/A

Horizontal

Vertical

N/A

Horizontal

Vertical

N/A

Horizontal

Vertical

N/A

Horizontal

Vertical

N/A

Horizontal

Vertical

N/A

Horizontal

Vertical

N/A

Horizontal

Vertical

N/A

Horizontal

Vertical

N/A

Horizontal

Vertical

N/A

Horizontal

Vertical

N/A

Horizontal

Vertical

N/A

Horizontal

Vertical

N/A

Horizontal

Vertical

N/A

Horizontal

Vertical

N/A

Horizontal

Vertical

N/A

Horizontal

Vertical

N/A

Horizontal

Vertical

N/A

Horizontal

Vertical

N/A

Horizontal

Vertical

N/A

Horizontal

Vertical

N/A

Horizontal

Vertical

N/A

Horizontal

Vertical

N/A

Horizontal

Vertical

N/A

Horizontal

Vertical

N/A

Horizontal

Vertical

N/A

Horizontal

Vertical

N/A

Horizontal

Vertical

N/A

Horizontal

Vertical

N/A

Horizontal

Vertical

N/A

Horizontal

Vertical

N/A

Horizontal

Vertical

N/A

Horizontal

Vertical

N/A

Horizontal

Vertical

N/A

Horizontal

Vertical

N/A

Horizontal

Vertical

N/A

Horizontal

Vertical

N/A

Horizontal

Vertical

N/A

Horizontal

Vertical

N/A

Horizontal

Vertical

N/A

Horizontal

Vertical

N/A

Horizontal

Vertical

N/A

Horizontal

Vertical

N/A

Horizontal

Vertical

N/A

Horizontal

Vertical

N/A

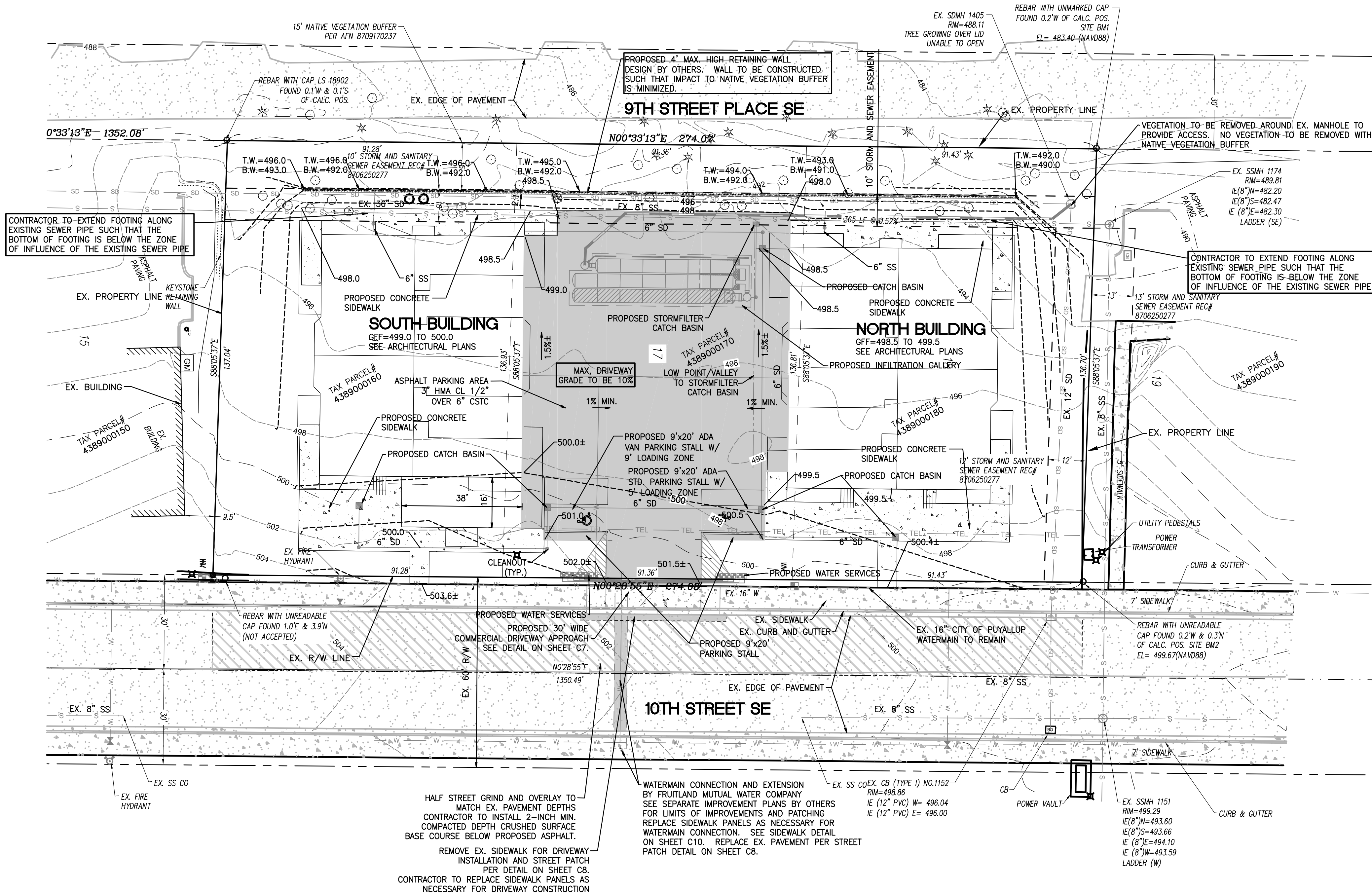
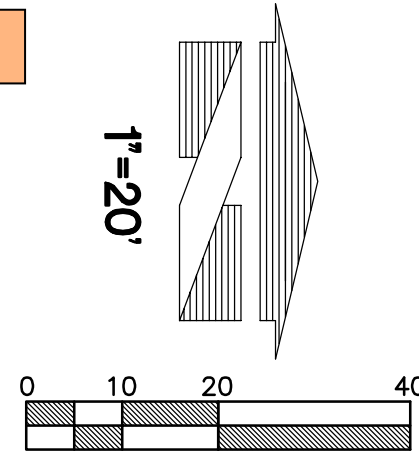
</

A PORTION OF SECTION 10, TOWNSHIP 19N, RANGE 4E, W.M., PIERCE COUNTY

COPPERBERRY CONDOMINIUMS

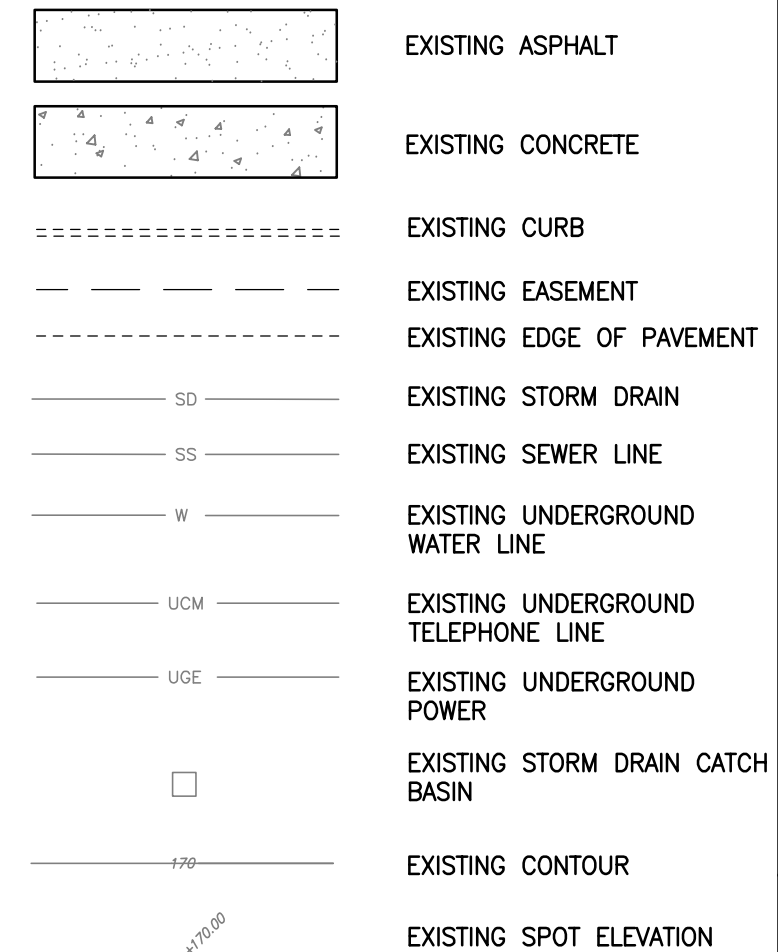
GRADING PLAN

PRFUP20231150

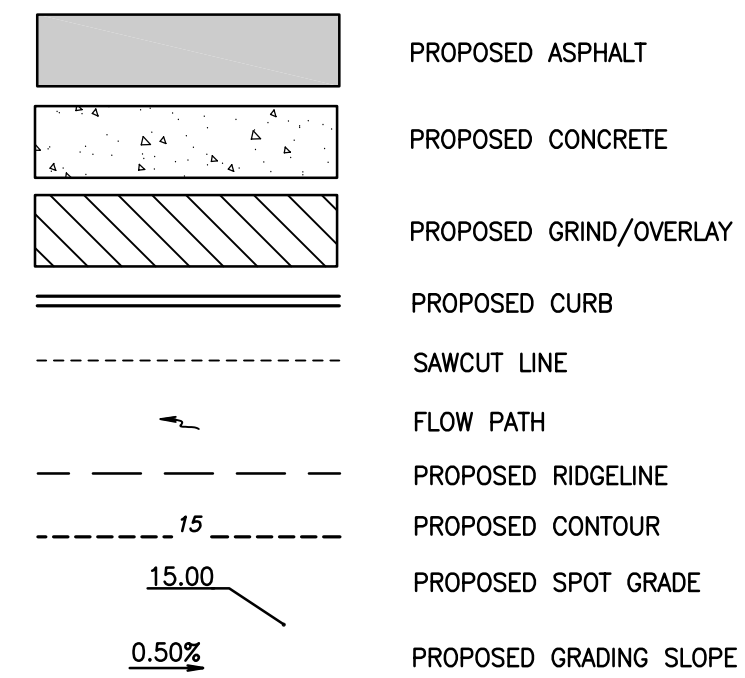


LEGEND

EXISTING



PROPOSED



NOTES:

- ALL GRADING AND PUBLIC IMPROVEMENTS SHALL BE CONSTRUCTED IN ACCORDANCE WITH THE PROVISIONS OF THE CURRENT CITY ORDINANCE AND STANDARD PLANS.
- ALL SPOT ELEVATIONS SHOWN ARE TO FINISH SURFACE (TOP OF ASPHALT OR TOP OF CONCRETE PAD) UNLESS OTHERWISE NOTED.

UTILITY SEPARATION NOTE:

PROVIDE A MINIMUM OF 42" OF COVER FOR ALL WATER SERVICE LINES.

PROVIDE MINIMUM 1.5' VERTICAL SEPARATION BETWEEN WATER SERVICE AND SEWER SERVICE LINES.

PROVIDE MINIMUM 0.5' VERTICAL SEPARATION BETWEEN WATER SERVICE AND STORM DRAIN LINES.

CONTRACTOR SHALL POTHOLE EX. UTILITIES PRIOR TO CONSTRUCTION TO ENSURE PROPER SEPARATION CAN BE MET.

EXISTING SIDEWALK NOTE:

CONTRACTOR TO VERIFY EXISTING SIDEWALK IS ADA COMPLIANT DURING CONSTRUCTION. ANY PORTIONS OF SIDEWALK THAT ARE MORE THAN 2% CROSS SLOPE SHALL BE REMOVED AND REPLACED TO LESS THAN 2% MAXIMUM CROSS SLOPE.



Know what's below.
Call before you dig.
Dial 811
Or Call 1-800-424-5555

UTILITY CONFLICT NOTE:

THE CONTRACTOR SHALL BE RESPONSIBLE FOR VERIFYING THE LOCATION, DIMENSION, AND DEPTH OF ALL EXISTING UTILITIES WHETHER SHOWN ON THESE PLANS OR NOT BY POT-HOLING THE UTILITIES AND SURVEYING THE HORIZONTAL AND VERTICAL LOCATION PRIOR TO CONSTRUCTION. THIS SHALL INCLUDE CALLING UTILITY LOCATE @ 1-800-424-5555 AND THEN POT-HOLING ALL OF THE EXISTING UTILITIES AT LOCATIONS OF NEW UTILITY CROSSINGS TO PHYSICALLY VERIFY WHETHER OR NOT CONFLICTS EXIST. LOCATIONS OF SAID UTILITIES AS SHOWN ON THESE PLANS ARE BASED UPON THE UNVERIFIED PUBLIC INFORMATION AND ARE SUBJECT TO VARIATION. IF CONFLICTS SHOULD OCCUR, THE CONTRACTOR SHALL CONSULT THE ENGINEER TO RESOLVE ALL PROBLEMS PRIOR TO PROCEEDING WITH CONSTRUCTION.

GRADING PLAN

COPPERBERRY CONDOMINIUMS
4002, 4010, 4018 10TH STREET E
PUYALLUP, WA 98374

Title:

For: BRCF

1002 39TH AVENUE SW, SUITE 104
PUYALLUP, WA 98373

CONTACT: BILL RILEY (253) 881-3033



Scale:

Horizontal

Vertical

N/A

Designed

CMT

Drawn

CMT

Checked

CMT

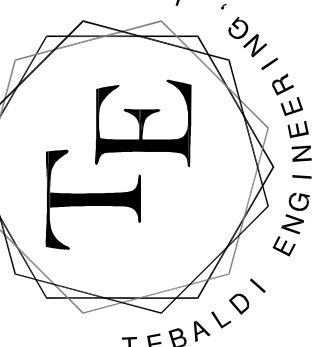
Approved

CMT

Date

7/1/22

P.O. BOX 121
SUMNER, WA 98390
(206) 450-5096
TEBALDIENGINEERING.COM



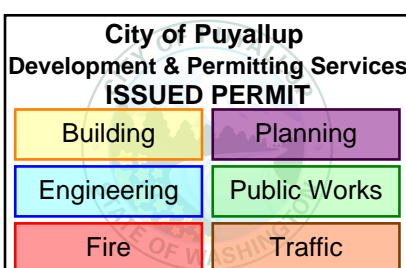
Job Number

COPPER

Sheet

C3

of 10



APPROVED

BY _____
CITY OF PUYALLUP
DEVELOPMENT ENGINEERING

DATE _____

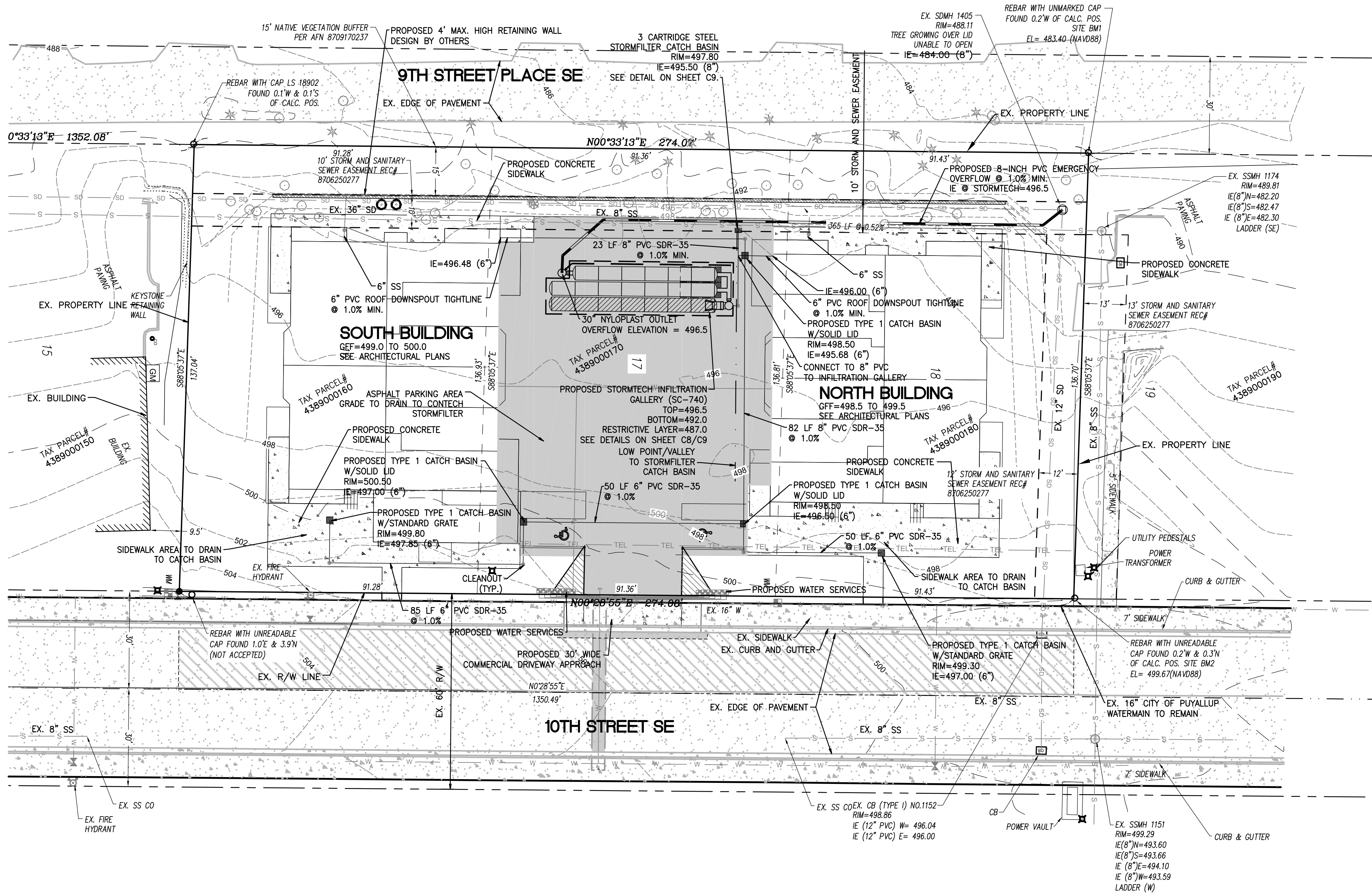
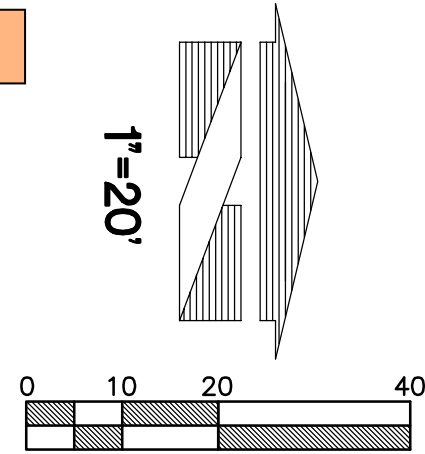
NOTE: THIS APPROVAL IS VOID AFTER 180 DAYS FROM APPROVAL DATE. THE CITY WILL NOT BE RESPONSIBLE FOR ERRORS AND/OR OMISSIONS ON THESE PLANS. FIELD CONDITIONS MAY DICTATE CHANGES TO THESE PLANS AS DETERMINED BY THE DEVELOPMENT ENGINEERING MANAGER.

A PORTION OF SECTION 10, TOWNSHIP 19N, RANGE 4E, W.M., PIERCE COUNTY

COPPERBERRY CONDOMINIUMS

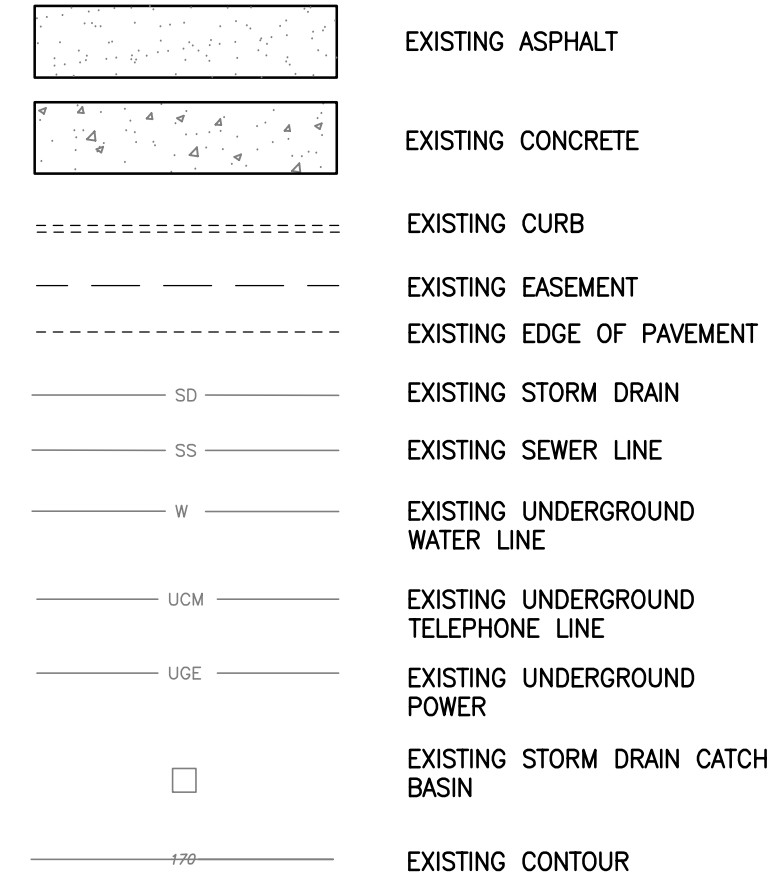
STORM DRAINAGE PLAN

PRFUP20231150

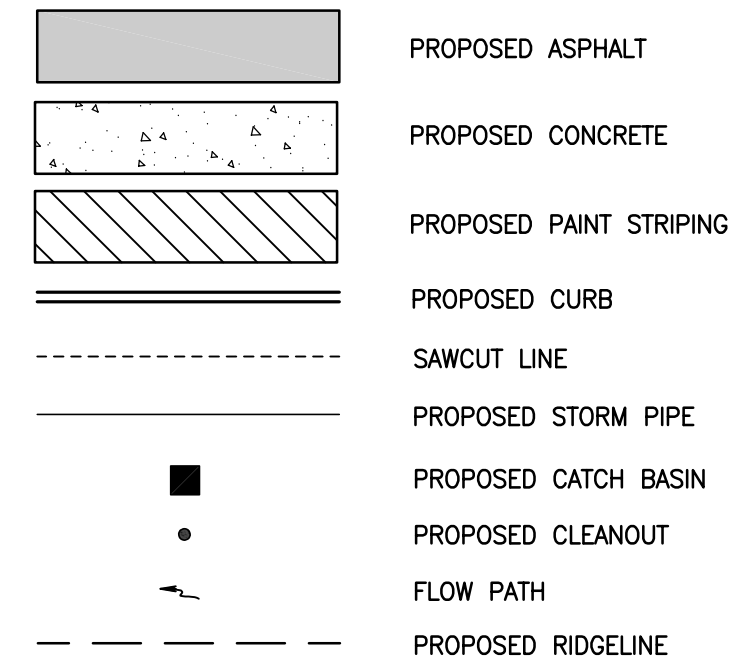


LEGEND

EXISTING



PROPOSED



FOOTING DRAIN NOTE:

CONTRACTOR TO INSTALL FOOTING DRAINS FOR EACH BUILDING TO DAYLIGHT THROUGH WEEPHOLES IN PROPOSED RETAINING WALL

NOTES:

1. ALL GRADING AND PUBLIC IMPROVEMENTS SHALL BE CONSTRUCTED IN ACCORDANCE WITH THE PROVISIONS OF THE CURRENT CITY ORDINANCE AND STANDARD PLANS.

UTILITY SEPARATION NOTE:

PROVIDE A MINIMUM OF 42" OF COVER FOR ALL WATER SERVICE LINES.

PROVIDE MINIMUM 1.5' VERTICAL SEPARATION BETWEEN WATER SERVICE AND SEWER SERVICE LINES.

PROVIDE MINIMUM 0.5' VERTICAL SEPARATION BETWEEN WATER SERVICE AND STORM DRAIN LINES.

CONTRACTOR SHALL POT-HOLE EX. UTILITIES PRIOR TO CONSTRUCTION TO ENSURE PROPER SEPARATION CAN BE MET.



Know what's below.
Call before you dig.
Dial 811
Or Call 1-800-424-5555

UTILITY CONFLICT NOTE:

THE CONTRACTOR SHALL BE RESPONSIBLE FOR VERIFYING THE LOCATION, DIMENSION, AND DEPTH OF ALL EXISTING UTILITIES WHETHER SHOWN ON THESE PLANS OR NOT BY POT-HOLING THE UTILITIES AND SURVEYING THE HORIZONTAL AND VERTICAL LOCATION PRIOR TO CONSTRUCTION. THIS SHALL INCLUDE CALLING UTILITY LOCATE @ 1-800-424-5555 AND THEN POT-HOLING ALL OF THE EXISTING UTILITIES AT LOCATIONS OF NEW UTILITY CROSSINGS TO PHYSICALLY VERIFY WHETHER OR NOT CONFLICTS EXIST. LOCATIONS OF SAID UTILITIES AS SHOWN ON THESE PLANS ARE BASED UPON THE UNVERIFIED PUBLIC INFORMATION AND ARE SUBJECT TO VARIATION. IF CONFLICTS SHOULD OCCUR, THE CONTRACTOR SHALL CONSULT THE ENGINEER TO RESOLVE ALL PROBLEMS PRIOR TO PROCEEDING WITH CONSTRUCTION.

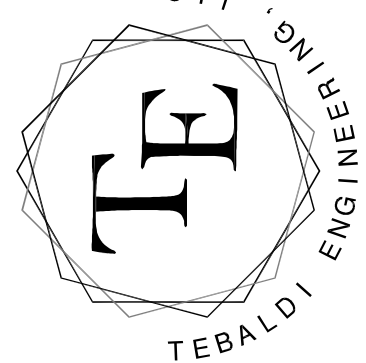
STORM DRAINAGE PLAN
COPPERBERRY CONDOMINIUMS
4002, 4010, 4018 10TH STREET E
PUYALLUP, WA 98374

For: BRCF
1002 39TH AVENUE SW, SUITE 104
PUYALLUP, WA 98373
CONTACT: BILL RILEY (253) 881-3033

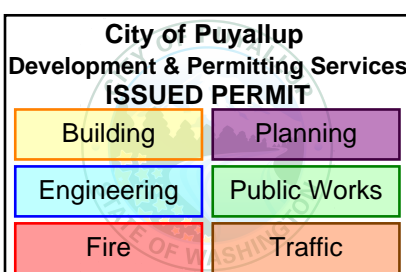


Scale:	Horizontal	Vertical
1"=20'	1"=20'	N/A

P.O. BOX 121
SUMNER, WA 98390
(206) 450-5096
TEBALDIENGINEERING.COM



Job Number
COPPER
Sheet
C4 of 10



APPROVED

BY _____
CITY OF PUYALLUP
DEVELOPMENT ENGINEERING

DATE _____

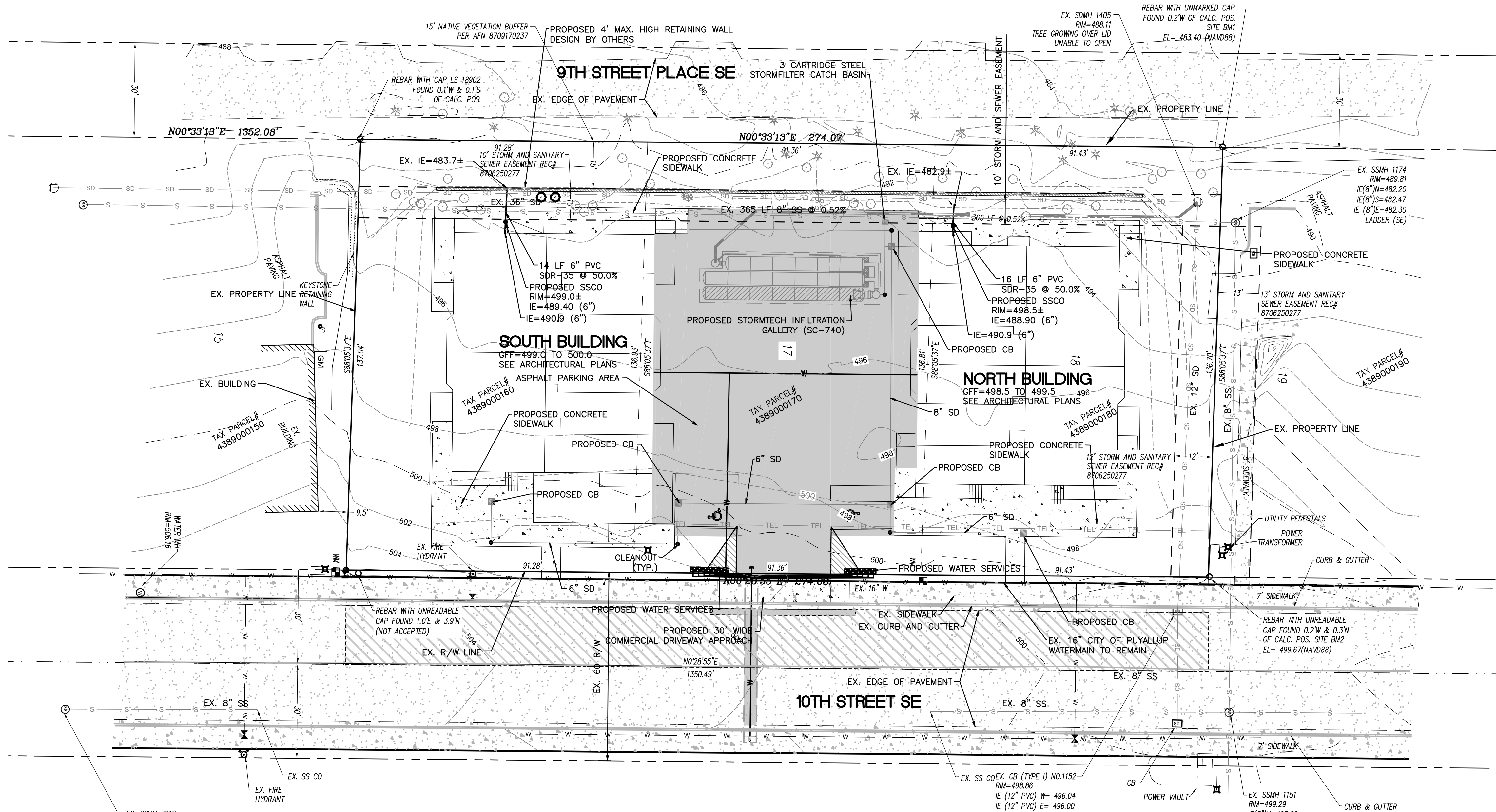
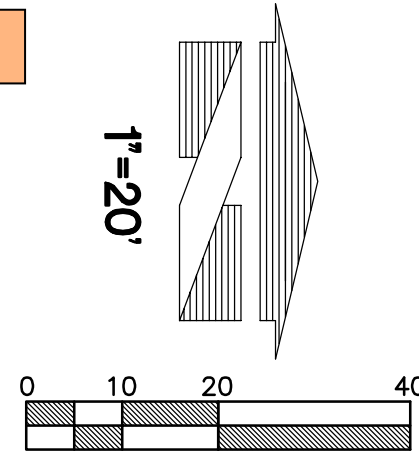
NOTE: THIS APPROVAL IS VOID AFTER 180 DAYS FROM APPROVAL DATE. THE CITY WILL NOT BE RESPONSIBLE FOR ERRORS AND/OR OMISSIONS ON THESE PLANS. FIELD CONDITIONS MAY DICTATE CHANGES TO THESE PLANS AS DETERMINED BY THE DEVELOPMENT ENGINEERING MANAGER.

A PORTION OF SECTION 10, TOWNSHIP 19N, RANGE 4E, W.M., PIERCE COUNTY

COPPERBERRY CONDOMINIUMS

SANITARY SEWER PLAN

PRFUP20231150



EX. SSMH 3018
RIM=503.57
IE(8")N=493.48
IE(8")S=493.42
IE(8")E=493.49
IE(8")W=493.52
LADDER (W)

SIDE SEWER CONNECTION NOTE:
CONTRACTOR TO COORDINATE WITH CITY INSPECTOR FOR LOCATION OF EXISTING SIDE SEWER STUBS FOR CONNECTION. CONNECT TO EX. SIDE SEWER STUBS FOR BUILDING SERVICE.

UTILITY SEPARATION NOTE:

PROVIDE A MINIMUM OF 42" OF COVER FOR ALL WATER SERVICE LINES.

PROVIDE MINIMUM 1.5' VERTICAL SEPARATION BETWEEN WATER SERVICE AND SEWER SERVICE LINES.

PROVIDE MINIMUM 0.5' VERTICAL SEPARATION BETWEEN WATER SERVICE AND STORM DRAIN LINES.

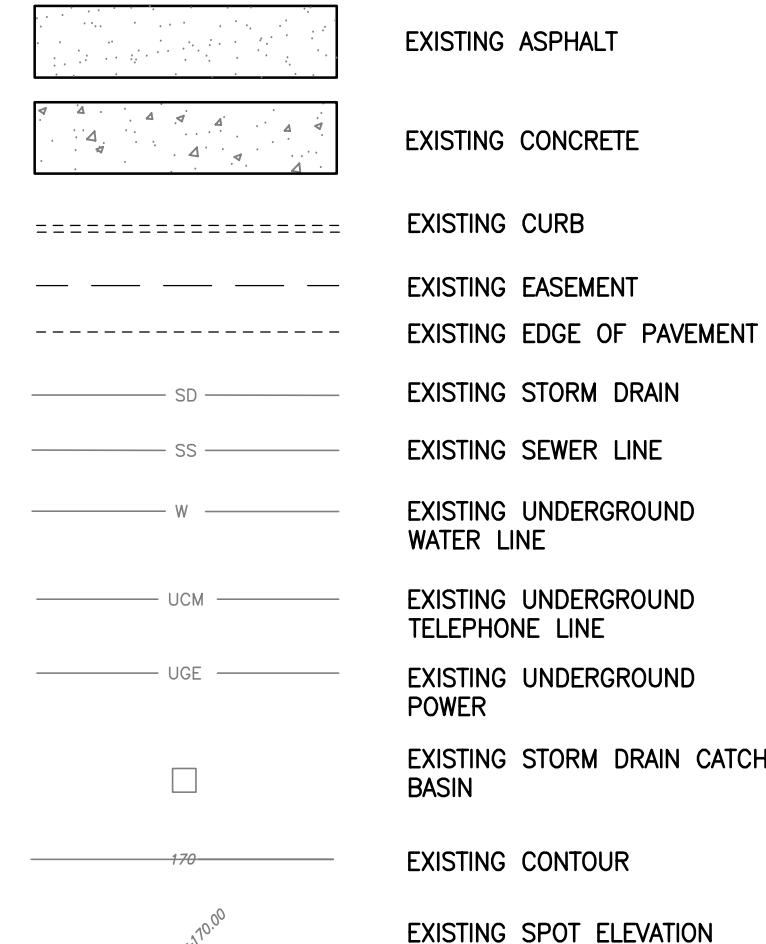
CONTRACTOR SHALL POTHOLE EX. UTILITIES PRIOR TO CONSTRUCTION TO ENSURE PROPER SEPARATION CAN BE MET.

UTILITY CONFLICT NOTE:

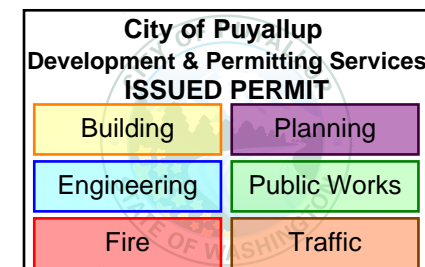
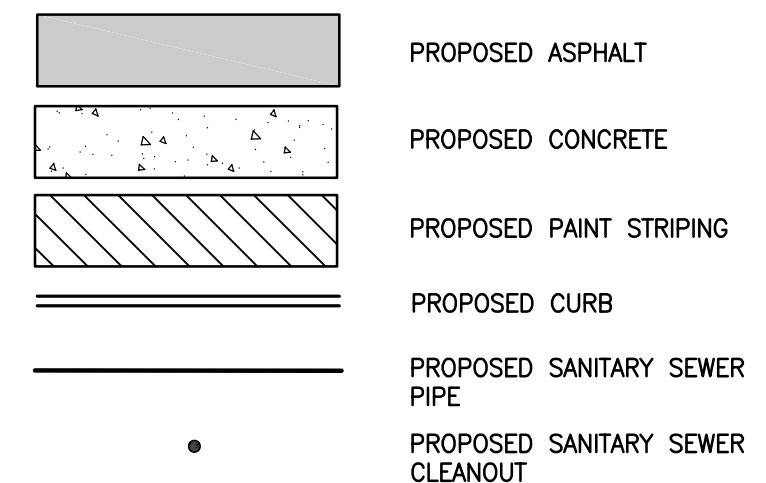
THE CONTRACTOR SHALL BE RESPONSIBLE FOR VERIFYING THE LOCATION, DIMENSION, AND DEPTH OF ALL EXISTING UTILITIES WHETHER SHOWN ON THESE PLANS OR NOT BY POTHOLES THE UTILITIES AND SURVEYING THE HORIZONTAL AND VERTICAL LOCATION PRIOR TO CONSTRUCTION. THIS SHALL INCLUDE CALLING UTILITY LOCATE 811 AND THEN POTHOLES ALL OF THE EXISTING UTILITIES AT LOCATIONS OF NEW UTILITY CROSSINGS TO PHYSICALLY VERIFY WHETHER OR NOT CONFLICTS EXIST. LOCATIONS OF SAID UTILITIES AS SHOWN ON THESE PLANS ARE BASED UPON THE UNVERIFIED PUBLIC INFORMATION AND ARE SUBJECT TO VARIATION. IF CONFLICTS SHOULD OCCUR, THE CONTRACTOR SHALL NOTIFY TEBALDI ENGINEERING, LLC. TO RESOLVE ALL PROBLEMS PRIOR TO PROCEEDING WITH CONSTRUCTION.

LEGEND

EXISTING



PROPOSED



APPROVED

BY _____
CITY OF PUYALLUP
DEVELOPMENT ENGINEERING

DATE _____

NOTE: THIS APPROVAL IS VOID AFTER 180 DAYS FROM APPROVAL DATE. THE CITY WILL NOT BE RESPONSIBLE FOR ERRORS AND/OR OMISSIONS ON THESE PLANS. FIELD CONDITIONS MAY DICTATE CHANGES TO THESE PLANS AS DETERMINED BY THE DEVELOPMENT ENGINEERING MANAGER.

Title:
SANITARY SEWER PLAN
COPPERBERRY CONDOMINIUMS
4002, 4010, 4018 10TH STREET E
PUYALLUP, WA 98374

For:
BRCF
1002 39TH AVENUE SW, SUITE 104
PUYALLUP, WA 98373
CONTACT: BILL RILEY (253) 881-3033



Scale:	Horizontal	1"=20'	Vertical	N/A
Designed	CMT			
Drawn	CMT			
Checked	CMT			
Approved	CMT			
Date	7/1/22			

P.O. BOX 121
SUMNER, WA 98390
(206) 450-5096
TEBALDIENGINEERING.COM



Job Number
COPPER
Sheet
C5 of 10



Know what's below.
Call before you dig.
Dial 811
(1-800-424-5555)

NOTES AND DETAILS

CITY OF PUYALLUP STORMWATER NOTES

1. ALL WORK IN CITY RIGHT-OF-WAY REQUIRES A PERMIT FROM THE CITY OF PUYALLUP. PRIOR TO ANY WORK COMMENCING, THE GENERAL CONTRACTOR SHALL ARRANGE FOR A PRECONSTRUCTION MEETING AT THE DEVELOPMENT SERVICES CENTER TO BE ATTENDED BY ALL CONTRACTORS THAT WILL PERFORM WORK SHOWN ON THE ENGINEERING PLANS, REPRESENTATIVES FROM ALL APPLICABLE UTILITY COMPANIES, THE PROJECT OWNER AND APPROPRIATE CITY STAFF. CONTACT ENGINEERING SERVICES TO SCHEDULE THE MEETING (253) 841-5568. THE CONTRACTOR IS RESPONSIBLE TO HAVE THEIR OWN APPROVED SET OF PLANS AT THE MEETING.
2. AFTER COMPLETION OF ALL ITEMS SHOWN ON THESE PLANS AND BEFORE ACCEPTANCE OF THE PROJECT, THE CONTRACTOR SHALL OBTAIN A 'PUNCH LIST' PREPARED BY THE CITY'S INSPECTOR DETAILING REMAINING ITEMS OF WORK TO BE COMPLETED. ALL ITEMS OF WORK SHOWN ON THESE PLANS SHALL BE COMPLETED TO THE SATISFACTION OF THE CITY PRIOR TO ACCEPTANCE OF THE WATER SYSTEM AND PROVISION OF SANITARY SEWER SERVICE.
3. ALL MATERIALS AND WORKMANSHIP SHALL CONFORM TO THE STANDARD SPECIFICATIONS FOR ROAD, BRIDGE, AND MUNICIPAL CONSTRUCTION (HEREINAFTER REFERRED TO AS THE 'STANDARD SPECIFICATIONS'), WASHINGTON STATE DEPARTMENT OF TRANSPORTATION AND AMERICAN PUBLIC WORKS ASSOCIATION, WASHINGTON STATE CHAPTER, LATEST EDITION, UNLESS SUPERSEDED OR AMENDED BY THE CITY OF PUYALLUP CITY STANDARDS FOR PUBLIC WORKS ENGINEERING AND CONSTRUCTION (HEREINAFTER REFERRED TO AS THE 'CITY STANDARDS').
4. A COPY OF THESE APPROVED PLANS AND APPLICABLE CITY DEVELOPER SPECIFICATIONS AND DETAILS SHALL BE ON SITE DURING CONSTRUCTION.
5. ANY REVISIONS MADE TO THESE PLANS MUST BE REVIEWED AND APPROVED BY THE DEVELOPER'S ENGINEER AND THE ENGINEERING SERVICES STAFF PRIOR TO ANY IMPLEMENTATION IN THE FIELD. THE CITY SHALL NOT BE RESPONSIBLE FOR ANY ERRORS AND/OR OMISSIONS ON THESE PLANS.
6. THE CONTRACTOR SHALL HAVE ALL UTILITIES VERIFIED ON THE GROUND PRIOR TO ANY CONSTRUCTION. CALL (811) AT LEAST TWO WORKING DAYS IN ADVANCE. THE OWNER AND HIS/HER ENGINEER SHALL BE CONTACTED IMMEDIATELY IF A CONFLICT EXISTS.
7. ANY STRUCTURE AND/OR OBSTRUCTION WHICH REQUIRE REMOVAL OR RELOCATION RELATING TO THIS PROJECT, SHALL BE DONE SO AT THE DEVELOPER'S EXPENSE.
8. DURING CONSTRUCTION, ALL EXISTING AND NEWLY INSTALLED DRAINAGE STRUCTURES SHALL BE PROTECTED FROM SEDIMENTS.
9. ALL STORM MANHOLES SHALL CONFORM TO CITY STANDARD DETAIL NO. 02.01.01. FLOW CONTROL MANHOLE/OIL WATER SEPARATOR SHALL CONFORM TO CITY STANDARD DETAIL NO. 02.01.06 AND 02.01.07.
10. MANHOLE RING AND COVER SHALL CONFORM TO CITY STANDARD DETAIL 06.01.02.
11. CATCH BASINS TYPE I SHALL CONFORM TO CITY STANDARD DETAIL NO.02.01.02 AND 02.01.03 AND SHALL BE USED ONLY FOR DEPTHS LESS THAN 5 FEET FROM TOP OF THE GRATE TO THE INVERT OF THE STORM PIPE.
12. CATCH BASINS TYPE II SHALL CONFORM TO CITY STANDARD DETAIL NO.02.01.04 AND SHALL BE USED FOR DEPTHS GREATER THAN 5 FEET FROM TOP OF THE GRATE TO THE INVERT OF THE STORM PIPE.
13. CAST IRON OR DUCTILE IRON FRAME AND GRATE SHALL CONFORM TO CITY STANDARD DETAIL NO.02.01.05. GRATE SHALL BE MARKED WITH 'DRAINS TO STREAM'. SOLID CATCH BASIN LIDS (SQUARE UNLESS NOTED AS ROUND) SHALL CONFORM TO WSDOT STANDARD PLAN B-30.20-04 (OLYMPIC FOUNDRY NO. SM60 OR EQUAL). VANED GRATES SHALL CONFORM TO WSDOT STANDARD PLAN B-30.30-03 (OLYMPIC FOUNDRY NO. SM60V OR EQUAL).
14. STORMWATER PIPE SHALL BE ONLY PVC, CONCRETE, DUCTILE IRON, OR DUAL WALLED POLYPROPYLENE PIPE.
- A. THE USE OF ANY OTHER TYPE SHALL BE REVIEWED AND APPROVED BY THE ENGINEERING SERVICES STAFF PRIOR TO INSTALLATION.
- B. PVC PIPE SHALL BE PER ASTM D3034, SDR 35 FOR PIPE SIZE 15-INCH AND SMALLER AND F679 FOR PIPE SIZES 18 TO 27 INCH. MINIMUM COVER ON PVC PIPE SHALL BE 3.0 FEET.
- C. CONCRETE PIPE SHALL CONFORM TO THE WSDOT STANDARD SPECIFICATIONS FOR CONCRETE UNDERDRAIN PIPE. MINIMUM COVER ON CONCRETE PIPE SHALL NOT LESS THAN 3.0 FEET.
- D. DUCTILE IRON PIPE SHALL BE CLASS 50, CONFORMING TO AWWA C151. MINIMUM COVER ON DUCTILE IRON PIPE SHALL BE 1.0 FOOT.
- E. POLYPROPYLENE PIPE (PP) SHALL BE DUAL WALLED, HAVE A SMOOTH INTERIOR AND EXTERIOR CORRUGATIONS AND MEET WSDOT 9-05.24(1), 12-INCH THROUGH 30-INCH PIPE SHALL MEET OR EXCEED ASTM F2736 AND AASHTO M330, TYPE S, OR TYPE D. 36-INCH THROUGH 60-INCH PIPE SHALL MEET OR EXCEED ASTM F2881 AND AASHTO M330, TYPE S, OR TYPE D. TESTING SHALL BE PER ASTM F1417. MINIMUM COVER OVER POLYPROPYLENE PIPE SHALL BE 3- FEET.
15. TRENCHING, BEDDING, AND BACKFILL FOR PIPE SHALL CONFORM TO CITY STANDARD DETAIL NO. 06.01.01.
16. STORM PIPE SHALL BE A MINIMUM OF 10 FEET AWAY FROM BUILDING FOUNDATIONS AND/OR ROOF LINES.
17. ALL STORM DRAIN MAINS SHALL BE TESTED AND INSPECTED FOR ACCEPTANCE AS OUTLINED IN SECTION 406 OF THE CITY OF PUYALLUP SANITARY SEWER SYSTEM STANDARDS.
18. ALL TEMPORARY SEDIMENTATION AND EROSION CONTROL MEASURES, AND PROTECTIVE MEASURES FOR CRITICAL AREAS AND SIGNIFICANT TREES SHALL BE INSTALLED PRIOR TO INITIATING ANY CONSTRUCTION ACTIVITIES.

CITY OF PUYALLUP GENERAL NOTES

1. ALL WORK IN CITY RIGHT-OF-WAY REQUIRES A PERMIT FROM THE CITY OF PUYALLUP. PRIOR TO ANY WORK COMMENCING, THE GENERAL CONTRACTOR SHALL ARRANGE FOR A PRECONSTRUCTION MEETING AT THE DEVELOPMENT SERVICES CENTER TO BE ATTENDED BY ALL CONTRACTORS THAT WILL PERFORM WORK SHOWN ON THE APPROVED ENGINEERING PLANS, REPRESENTATIVES FROM ALL APPLICABLE UTILITY COMPANIES, THE PROJECT OWNER AND APPROPRIATE CITY STAFF. CONTACT ENGINEERING SERVICES AT (253-841-5568) TO SCHEDULE THE MEETING. THE CONTRACTOR IS RESPONSIBLE TO HAVE THEIR OWN SET OF APPROVED PLANS AT THE MEETING.
2. AFTER COMPLETION OF ALL ITEMS SHOWN ON THESE PLANS AND BEFORE ACCEPTANCE OF THE PROJECT THE CONTRACTOR SHALL OBTAIN A 'PUNCH LIST' PREPARED BY THE CITY'S INSPECTOR DETAILING REMAINING ITEMS OF WORK TO BE COMPLETED. ALL ITEMS OF WORK SHOWN ON THESE PLANS SHALL BE COMPLETED TO THE SATISFACTION OF THE CITY PRIOR TO ACCEPTANCE OF THE WATER SYSTEM AND PROVISION OF SANITARY SEWER SERVICE.
3. ALL MATERIALS AND WORKMANSHIP SHALL CONFORM TO THE STANDARD SPECIFICATIONS FOR ROAD, BRIDGE, AND MUNICIPAL CONSTRUCTION (HEREINAFTER REFERRED TO AS THE 'STANDARD SPECIFICATIONS'), WASHINGTON STATE DEPARTMENT OF TRANSPORTATION AND AMERICAN PUBLIC WORKS ASSOCIATION, WASHINGTON STATE CHAPTER, LATEST EDITION, UNLESS SUPERSEDED OR AMENDED BY THE CITY OF PUYALLUP CITY STANDARDS FOR PUBLIC WORKS ENGINEERING AND CONSTRUCTION (HEREINAFTER REFERRED TO AS THE 'CITY STANDARDS').
4. A COPY OF THESE APPROVED PLANS AND APPLICABLE CITY DEVELOPER SPECIFICATIONS AND DETAILS SHALL BE ON SITE DURING CONSTRUCTION.
5. ANY REVISIONS MADE TO THESE PLANS MUST BE REVIEWED AND APPROVED BY THE DEVELOPER'S ENGINEER AND THE CITY PRIOR TO ANY IMPLEMENTATION IN THE FIELD. THE CITY SHALL NOT BE RESPONSIBLE FOR ANY ERRORS AND/OR OMISSIONS ON THESE PLANS.
6. THE CONTRACTOR SHALL HAVE ALL UTILITIES VERIFIED ON THE GROUND PRIOR TO ANY CONSTRUCTION. CALL (811) AT LEAST TWO WORKING DAYS IN ADVANCE. THE OWNER AND HIS/HER ENGINEER SHALL BE CONTACTED IMMEDIATELY IF A CONFLICT EXISTS.
7. ANY STRUCTURE AND/OR OBSTRUCTION THAT REQUIRES REMOVAL OR RELOCATION RELATING TO THIS PROJECT SHALL BE DONE SO AT THE DEVELOPER'S EXPENSE.
8. LOCATIONS OF EXISTING UTILITIES ARE APPROXIMATE. IT SHALL BE THE CONTRACTOR'S RESPONSIBILITY TO DETERMINE THE TRUE ELEVATIONS AND LOCATIONS OF HIDDEN UTILITIES. ALL VISIBLE ITEMS SHALL BE THE ENGINEER'S RESPONSIBILITY.
9. THE CONTRACTOR SHALL INSTALL, REPLACE, OR RELOCATE ALL SIGNS, AS SHOWN ON THE PLANS OR AS AFFECTED BY CONSTRUCTION, PER CITY STANDARDS.
10. POWER, STREET LIGHT, CABLE, AND TELEPHONE LINES SHALL BE IN A TRENCH LOCATED WITHIN A 10-FOOT UTILITY EASEMENT ADJACENT TO PUBLIC RIGHT-OF-WAY. RIGHT-OF-WAY CROSSINGS SHALL HAVE A MINIMUM HORIZONTAL SEPARATION FROM OTHER UTILITIES (SEWER, WATER, AND STORM) OF 5 FEET.
11. ALL CONSTRUCTION SURVEYING FOR EXTENSIONS OF PUBLIC FACILITIES SHALL BE DONE UNDER THE DIRECTION OF A WASHINGTON STATE LICENSED LAND SURVEYOR OR A WASHINGTON STATE LICENSED PROFESSIONAL CIVIL ENGINEER.
12. DURING CONSTRUCTION, ALL PUBLIC STREETS ADJACENT TO THIS PROJECT SHALL BE KEPT CLEAN OF ALL MATERIAL DEPOSITS RESULTING FROM ON-SITE CONSTRUCTION, AND EXISTING STRUCTURES SHALL BE PROTECTED AS DIRECTED BY THE CITY.
13. CERTIFIED RECORD DRAWINGS ARE REQUIRED PRIOR TO PROJECT ACCEPTANCE.
14. A NPDES STORMWATER GENERAL PERMIT MAY BE REQUIRED BY THE DEPARTMENT OF ECOLOGY FOR THIS PROJECT. FOR INFORMATION CONTACT THE DEPARTMENT OF ECOLOGY, SOUTHWEST REGION OFFICE AT (360)407-6300.
15. ANY DISTURBANCE OR DAMAGE TO CRITICAL AREAS AND ASSOCIATED BUFFERS, OR SIGNIFICANT TREES DESIGNATED FOR PRESERVATION AND PROTECTION SHALL BE MITIGATED IN ACCORDANCE WITH A MITIGATION PLAN REVIEWED AND APPROVED BY THE CITY'S PLANNING DIVISION. PREPARATION AND IMPLEMENTATION OF THE MITIGATION PLAN SHALL BE AT THE DEVELOPER'S EXPENSE.

CITY OF PUYALLUP ROAD NOTES

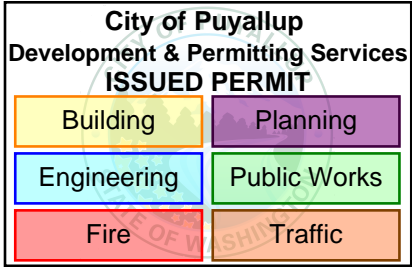
1. ALL WORK IN CITY RIGHT-OF-WAY REQUIRES A PERMIT FROM THE CITY OF PUYALLUP. PRIOR TO ANY WORK COMMENCING, THE GENERAL CONTRACTOR SHALL ARRANGE FOR A PRECONSTRUCTION MEETING AT THE DEVELOPMENT SERVICES CENTER TO BE ATTENDED BY ALL CONTRACTORS THAT WILL PERFORM WORK SHOWN ON THE ENGINEERING PLANS, REPRESENTATIVES FROM ALL APPLICABLE UTILITY COMPANIES, THE PROJECT OWNER AND APPROPRIATE CITY STAFF. CONTACT ENGINEERING SERVICES TO SCHEDULE THE MEETING (253) 841-5568. THE CONTRACTOR IS RESPONSIBLE TO HAVE THEIR OWN APPROVED SET OF PLANS AT THE MEETING.
2. AFTER COMPLETION OF ALL ITEMS SHOWN ON THESE PLANS AND BEFORE ACCEPTANCE OF THE PROJECT, THE CONTRACTOR SHALL OBTAIN A 'PUNCH LIST' PREPARED BY THE CITY'S INSPECTOR DETAILING REMAINING ITEMS OF WORK TO BE COMPLETED. ALL ITEMS OF WORK SHOWN ON THESE PLANS SHALL BE COMPLETED TO THE SATISFACTION OF THE CITY PRIOR TO ACCEPTANCE OF THE WATER SYSTEM AND PROVISION OF SANITARY SEWER SERVICE.
3. ALL MATERIALS AND WORKMANSHIP SHALL CONFORM TO THE STANDARD SPECIFICATIONS FOR ROAD, BRIDGE, AND MUNICIPAL CONSTRUCTION (HEREINAFTER REFERRED TO AS THE 'STANDARD SPECIFICATIONS'), WASHINGTON STATE DEPARTMENT OF TRANSPORTATION AND AMERICAN PUBLIC WORKS ASSOCIATION, WASHINGTON STATE CHAPTER, LATEST EDITION, UNLESS SUPERSEDED OR AMENDED BY THE CITY OF PUYALLUP CITY STANDARDS FOR PUBLIC WORKS ENGINEERING AND CONSTRUCTION (HEREINAFTER REFERRED TO AS THE 'CITY STANDARDS').
4. A COPY OF THESE APPROVED PLANS AND APPLICABLE CITY DEVELOPER SPECIFICATIONS AND DETAILS SHALL BE ON SITE DURING CONSTRUCTION.
5. ANY REVISIONS MADE TO THESE PLANS MUST BE REVIEWED AND APPROVED BY THE DEVELOPER'S ENGINEER AND THE ENGINEERING SERVICES STAFF PRIOR TO ANY IMPLEMENTATION IN THE FIELD. THE CITY SHALL NOT BE RESPONSIBLE FOR ANY ERRORS AND/OR OMISSIONS ON THESE PLANS.
6. THE CONTRACTOR SHALL HAVE ALL UTILITIES VERIFIED ON THE GROUND PRIOR TO ANY CONSTRUCTION. CALL (811) AT LEAST TWO WORKING DAYS IN ADVANCE. THE OWNER AND HIS/HER ENGINEER SHALL BE CONTACTED IMMEDIATELY IF A CONFLICT EXISTS.
7. ANY STRUCTURE AND/OR OBSTRUCTION WHICH REQUIRES REMOVAL OR RELOCATION RELATING TO THIS PROJECT, SHALL BE DONE SO AT THE DEVELOPER'S EXPENSE.
8. MONUMENTS SHALL BE INSTALLED AT ALL STREET INTERSECTIONS, AT ANGLE POINTS, AND POINTS OF CURVATURE IN EACH STREET. ALL BOUNDARY MONUMENTS MUST BE INSTALLED ACCORDING TO THE WASHINGTON STATE SUBDIVISION LAWS.
9. CURB AND GUTTER INSTALLATION SHALL CONFORM TO CITY STANDARD DETAIL 01.02.09.
10. SIDEWALKS AND DRIVEWAYS SHALL BE INSTALLED AS LOTS ARE BUILT ON. SIDEWALKS AND DRIVEWAYS SHALL CONFORM TO CITY STANDARD DETAIL 01.02.01, 01.02.02 AND 01.02.12. IF ASPHALT IS DAMAGED DURING REPLACEMENT OF CURB AND GUTTER, THE REPAIR SHALL CONFORM TO CITY STANDARD DETAIL 01.02.10.
11. THE SURROUNDING GROUND (5 FEET BEYOND THE BASE) FOR ALL POWER TRANSFORMERS, TELEPHONE/TV PEDESTALS, AND STREET LIGHT MAIN DISCONNECTS SHALL BE GRADED TO A POSITIVE 2 PERCENT SLOPE FROM TOP OF CURB.
12. SIGNAGE AND TRAFFIC CONTROL DEVICES ARE SAFETY ITEMS AND SHALL BE INSTALLED PRIOR TO ISSUANCE OF ANY CERTIFICATE OF OCCUPANCY OR PLAT APPROVAL. HOWEVER, IN LARGER DEVELOPMENTS, EXACT LOCATIONS OF STOP AND YIELD SIGNS MAY NEED TO BE DETERMINED AFTER FULL BUILDOUT WHEN TRAFFIC PATTERNS HAVE BEEN ESTABLISHED. IN THIS CASE, CONTRACTOR SHALL PROVIDE INDICATED 'CITY-PLACED SIGNS, SIGNPOSTS, AND BRACKETS TO THE CITY SIGN SPECIALIST (253) 841-5471 FOR LATER INSTALLATION BY THE CITY. ALL SIGNAGE SHALL BE IN ACCORDANCE WITH THE MANUAL ON UNIFORM TRAFFIC CONTROL DEVICES (MUTCD).
13. PRIOR TO ANY SIGN OR STRIPING INSTALLATION OR REMOVAL THE CONTRACTOR SHALL CONTACT THE CITY SIGN SPECIALIST (253) 841-5471 TO ARRANGE FOR AN ON-SITE MEETING TO DISCUSS PLACEMENT AND UNIFORMITY.
14. NEW OR REVISED STOP SIGNS OR YIELD SIGNS SHALL BE ADVANCE WARNED USING THE PROCEDURE OUTLINED IN THE MUTCD. ADVANCE WARNING SIGNS AND FLAGS SHALL BE MAINTAINED BY INSTALLER FOR 30 DAYS AND THEN REMOVED.

CITY OF PUYALLUP GRADING/TESC NOTES

1. ALL WORK IN CITY RIGHT-OF-WAY REQUIRES A PERMIT FROM THE CITY OF PUYALLUP. PRIOR TO ANY WORK COMMENCING, THE GENERAL CONTRACTOR SHALL ARRANGE FOR A PRECONSTRUCTION MEETING AT THE DEVELOPMENT SERVICES CENTER TO BE ATTENDED BY ALL CONTRACTORS THAT WILL PERFORM WORK SHOWN ON THE ENGINEERING PLANS, REPRESENTATIVES FROM ALL APPLICABLE UTILITY COMPANIES, THE PROJECT OWNER AND APPROPRIATE CITY STAFF. CONTACT ENGINEERING SERVICES TO SCHEDULE THE MEETING (253) 841-5568. THE CONTRACTOR IS RESPONSIBLE TO HAVE THEIR OWN APPROVED SET OF PLANS AT THE MEETING.
2. AFTER COMPLETION OF ALL ITEMS SHOWN ON THESE PLANS AND BEFORE ACCEPTANCE OF THE PROJECT, THE CONTRACTOR SHALL OBTAIN A 'PUNCH LIST' PREPARED BY THE CITY'S INSPECTOR DETAILING REMAINING ITEMS OF WORK TO BE COMPLETED. ALL ITEMS OF WORK SHOWN ON THESE PLANS SHALL BE COMPLETED TO THE SATISFACTION OF THE CITY PRIOR TO ACCEPTANCE OF THE WATER SYSTEM AND PROVISION OF SANITARY SEWER SERVICE.
3. ALL MATERIALS AND WORKMANSHIP SHALL CONFORM TO THE STANDARD SPECIFICATIONS FOR ROAD, BRIDGE, AND MUNICIPAL CONSTRUCTION (HEREINAFTER REFERRED TO AS THE 'STANDARD SPECIFICATIONS'), WASHINGTON STATE DEPARTMENT OF TRANSPORTATION AND AMERICAN PUBLIC WORKS ASSOCIATION, WASHINGTON STATE CHAPTER, LATEST EDITION, UNLESS SUPERSEDED OR AMENDED BY THE CITY OF PUYALLUP CITY STANDARDS FOR PUBLIC WORKS ENGINEERING AND CONSTRUCTION (HERINAFTER REFERRED TO AS THE 'CITY STANDARDS').
4. A COPY OF THESE APPROVED PLANS AND APPLICABLE CITY DEVELOPER SPECIFICATIONS AND DETAILS SHALL BE ON SITE DURING CONSTRUCTION.
5. ANY REVISIONS MADE TO THESE PLANS MUST BE REVIEWED AND APPROVED BY THE DEVELOPER'S ENGINEER AND THE CITY ENGINEER PRIOR TO ANY IMPLEMENTATION IN THE FIELD. THE CITY SHALL NOT BE RESPONSIBLE FOR ANY ERRORS AND/OR OMISSIONS ON THESE PLANS.
6. THE CONTRACTOR SHALL HAVE ALL UTILITIES VERIFIED ON THE GROUND PRIOR TO ANY CONSTRUCTION. CALL (811) AT LEAST TWO WORKING DAYS HOURS IN ADVANCE. THE OWNER AND HIS/HER ENGINEER SHALL BE CONTACTED IMMEDIATELY IF A CONFLICT EXISTS.
7. ALL LIMITS OF CLEARING AND AREAS OF VEGETATION PRESERVATION AS PRESCRIBED ON THE PLANS SHALL BE CLEARLY FLAGGED IN THE FIELD AND OBSERVED DURING CONSTRUCTION.
8. ALL REQUIRED SEDIMENTATION AND EROSION CONTROL FACILITIES MUST BE CONSTRUCTED AND IN OPERATION PRIOR TO ANY LAND CLEARING AND/OR OTHER CONSTRUCTION TO ENSURE THAT SEDIMENT LADEN WATER DOES NOT ENTER THE NATURAL DRAINAGE SYSTEM. THE CONTRACTOR SHALL SCHEDULE AN INSPECTION OF THE EROSION CONTROL FACILITIES PRIOR TO ANY LAND CLEARING AND/OR OTHER CONSTRUCTION. ALL EROSION AND SEDIMENT FACILITIES SHALL BE MAINTAINED IN A SATISFACTORY CONDITION AS DETERMINED BY THE CITY, UNTIL SUCH TIME THAT CLEARING AND/OR CONSTRUCTION IS COMPLETED AND THE POTENTIAL FOR ON-SITE EROSION HAS PASSED. THE IMPLEMENTATION, MAINTENANCE, REPLACEMENT, AND ADDITIONS TO THE EROSION AND SEDIMENTATION CONTROL SYSTEMS SHALL BE THE RESPONSIBILITY OF THE PERMITTEE.
9. THE EROSION AND SEDIMENTATION CONTROL SYSTEM FACILITIES DEPICTED ON THESE PLANS ARE INTENDED TO BE MINIMUM REQUIREMENTS TO MEET ANTICIPATED SITE CONDITIONS. AS CONSTRUCTION PROGRESSES AND UNEXPECTED OR SEASONAL CONDITIONS DICTATE, FACILITIES WILL BE NECESSARY TO ENSURE COMPLETE SILTATION CONTROL ON THE SITE. DURING THE COURSE OF CONSTRUCTION, IT SHALL BE THE OBLIGATION AND RESPONSIBILITY OF THE PERMITTEE TO ADDRESS ANY NEW CONDITIONS THAT MAY BE CREATED BY HIS ACTIVITIES AND TO PROVIDE ADDITIONAL FACILITIES, OVER AND ABOVE THE MINIMUM REQUIREMENTS, AS MAY BE NEEDED TO PROTECT ADJACENT PROPERTIES, SENSITIVE AREAS, NATURAL WATER COURSES, AND/OR STORM DRAINAGE SYSTEMS.
10. APPROVAL OF THESE PLANS IS FOR GRADING, TEMPORARY DRAINAGE, EROSION AND SEDIMENTATION CONTROL ONLY. IT DOES NOT CONSTITUTE AN APPROVAL OF PERMANENT STORM DRAINAGE DESIGN, SIZE OR LOCATION OF PIPES, RESTRICTORS, CHANNELS, OR RETENTION FACILITIES.
11. ANY DISTURBED AREA WHICH HAS BEEN STRIPPED OF VEGETATION AND WHERE NO FURTHER WORK IS ANTICIPATED FOR A PERIOD OF 30 DAYS OR MORE, MUST BE IMMEDIATELY STABILIZED WITH MULCHING, GRASS PLANTING, OR OTHER APPROVED EROSION CONTROL TREATMENT APPLICABLE TO THE TIME OF YEAR IN QUESTION. GRASS SEEDING ALONE WILL BE ACCEPTABLE ONLY DURING THE MONTHS OF APRIL THROUGH SEPTEMBER INCLUSIVE. SEEDING MAY PROCEED OUTSIDE THE SPECIFIED TIME PERIOD WHENEVER IT IS IN THE INTEREST OF THE PERMITTEE BUT MUST BE AUGMENTED WITH MULCHING, NETTING, OR OTHER TREATMENT APPROVED BY THE CITY.
12. IN CASE EROSION OR SEDIMENTATION OCCURS TO ADJACENT PROPERTIES, ALL CONSTRUCTION WORK WITHIN THE DEVELOPMENT THAT WILL FURTHER AGGRAVATE THE SITUATION MUST CEASE, AND THE OWNER/CONTRACTOR WILL IMMEDIATELY COMMENCE RESTORATION METHODS. RESTORATION ACTIVITY WILL CONTINUE UNTIL SUCH TIME AS THE AFFECTED PROPERTY OWNER IS SATISFIED.
13. NO TEMPORARY OR PERMANENT STOCKPILES OF MATERIALS OR EQUIPMENT SHALL OCCUR WITHIN CRITICAL AREAS OR ASSOCIATED BUFFERS, OR THE CRITICAL ROOT ZONE FOR VEGETATION PROPOSED FOR RETENTION.

CITY OF PUYALLUP SANITARY SEWER NOTES

1. ALL WORK IN CITY RIGHT-OF-WAY REQUIRES A PERMIT FROM THE CITY OF PUYALLUP. PRIOR TO ANY WORK COMMENCING, THE GENERAL CONTRACTOR SHALL ARRANGE FOR A PRECONSTRUCTION MEETING AT THE DEVELOPMENT SERVICES CENTER TO BE ATTENDED BY ALL CONTRACTORS THAT WILL PERFORM WORK SHOWN ON THE ENGINEERING PLANS, REPRESENTATIVES FROM ALL APPLICABLE UTILITY COMPANIES, THE PROJECT OWNER AND APPROPRIATE CITY STAFF. CONTACT ENGINEERING SERVICES TO SCHEDULE THE MEETING (253) 841-5568. THE CONTRACTOR IS RESPONSIBLE TO HAVE THEIR OWN APPROVED SET OF PLANS AT THE MEETING.
2. AFTER COMPLETION OF ALL ITEMS SHOWN ON THESE PLANS AND BEFORE ACCEPTANCE OF THE PROJECT, THE CONTRACTOR SHALL OBTAIN A 'PUNCH LIST' PREPARED BY THE CITY'S INSPECTOR DETAILING REMAINING ITEMS OF WORK TO BE COMPLETED. ALL ITEMS OF WORK SHOWN ON THESE PLANS SHALL BE COMPLETED TO THE SATISFACTION OF THE CITY PRIOR TO ACCEPTANCE OF THE SEWER SYSTEM AND PROVISION OF SANITARY SEWER SERVICE.
3. ALL MATERIALS AND WORKMANSHIP SHALL CONFORM TO THE STANDARD SPECIFICATIONS FOR ROAD, BRIDGE, AND MUNICIPAL CONSTRUCTION (HEREINAFTER REFERRED TO AS THE 'STANDARD SPECIFICATIONS'), WASHINGTON STATE DEPARTMENT OF TRANSPORTATION AND AMERICAN PUBLIC WORKS ASSOCIATION, WASHINGTON STATE CHAPTER, LATEST EDITION, UNLESS SUPERSEDED OR AMENDED BY THE CITY OF PUYALLUP CITY STANDARDS FOR PUBLIC WORKS ENGINEERING AND CONSTRUCTION (HEREINAFTER REFERRED TO AS THE 'CITY STANDARDS').
4. A COPY OF THESE APPROVED PLANS AND APPLICABLE CITY DEVELOPER SPECIFICATIONS AND DETAILS SHALL BE ON SITE DURING CONSTRUCTION.
5. ANY REVISIONS MADE TO THESE PLANS MUST BE REVIEWED AND APPROVED BY THE DEVELOPER'S ENGINEER AND THE ENGINEERING SERVICES STAFF PRIOR TO ANY IMPLEMENTATION IN THE FIELD. THE CITY SHALL NOT BE RESPONSIBLE FOR ANY ERRORS AND/OR OMISSIONS ON THESE PLANS.
6. THE CONTRACTOR SHALL HAVE ALL UTILITIES VERIFIED ON THE GROUND PRIOR TO ANY CONSTRUCTION. CALL (811) AT LEAST TWO WORKING DAYS IN ADVANCE. THE OWNER AND HIS/HER ENGINEER SHALL BE CONTACTED IMMEDIATELY IF A CONFLICT EXISTS.
7. ANY STRUCTURE AND/OR OBSTRUCTION WHICH REQUIRE REMOVAL OR RELOCATION RELATING TO THIS PROJECT SHALL BE DONE SO AT THE DEVELOPER'S EXPENSE.
8. MINIMUM GRADE ON ALL 4 INCH RESIDENTIAL SIDE SEWERS SHALL BE 2 PERCENT AND 6 INCH COMMERCIAL SIDE SEWERS SHALL BE 1 PERCENT; MAXIMUM SHALL BE 8 PERCENT. ALL SIDE SEWERS SHALL BE 6 INCHES WITHIN CITY RIGHT-OF-WAY.
9. SIDE SEWERS SHALL BE INSTALLED IN ACCORDANCE WITH CITY STANDARD NOS. 04.03.01, 04.03.02, 04.03.03 AND 04.03.04. SIDE SEWER INSTALLATION WORK SHALL BE DONE IN ACCORDANCE WITH THE WASHINGTON INDUSTRIAL SAFETY AND HEALTH ACT (WISHA).
10. ALL SEWER PIPE SHALL BE PVC, POLYPROPYLENE, OR DUCTILE IRON. PVC SEWER PIPE SHALL CONFORM TO ASTM D-3034, SDR35 FOR PIPE SIZES 15-INCH AND SMALLER AND ASTM F679 FOR PIPE SIZES 18- TO 27-INCH; DUCTILE IRON PIPE SHALL BE CLASS 51 OR GREATER, LINED WITH PROTECTO 401TMEPOXY LINING OR EQUIVALENT, UNLESS OTHERWISE NOTED. 12-INCH THROUGH 30-INCH POLYPROPYLENE PIPE (PP) SHALL BE DUAL WALLED, HAVE A SMOOTH INTERIOR AND EXTERIOR CORRUGATIONS AND MEET WSDOT 9-05.24(2). IT SHALL MEET OR EXCEED ASTM F2764. 36-INCH THROUGH 60-INCH PP PIPE SHALL BE TRIPLE WALLED AND MEET WSDOT 9-05.24(2). IT SHALL MEET OR EXCEED ASTM F2764. PP SHALL HAVE A MINIMUM PIPE STIFFNESS OF 46 PI WHEN TESTED IN ACCORDANCE WITH ASTM D2412. TESTING SHALL BE PER ASTM F1417. TRENCHING, BEDDING, AND BACKFILL SHALL BE IN ACCORDANCE WITH CITY STANDARD NO. 06.01.01. MINIMUM COVER ON PVC AND PP PIPE SHALL BE 3.0 FEET. MINIMUM COVER ON DUCTILE IRON PIPE SHALL BE 1.0 FOOT.
11. SANITARY SEWER MANHOLE FRAMES AND COVERS SHALL CONFORM TO CITY STANDARD NO. 06.01.02.
12. SANITARY SEWER MANHOLES SHALL CONFORM TO CITY STANDARD NOS. 04.01.01, 04.01.02, 04.01.03 AND 04.01.04. ALL MANHOLES SHALL BE CHanneled FOR FUTURE LINES AS SPECIFIED ON THESE PLANS. MANHOLE STEPS AND LADDER SHALL CONFORM TO STANDARD NO. 06.01.03.
13. SANITARY SEWER PIPE AND SIDE SEWERS SHALL BE 10 FEET AWAY FROM BUILDING FOUNDATIONS AND/OR ROOF LINES WITH THE EXCEPTION OF SIDE SEWERS THAT PROVIDE SERVICE TO A SINGLE-FAMILY RESIDENCE. AT THE DISCRETION OF THE REVIEW ENGINEER, A LICENSED PROFESSIONAL ENGINEER WILL BE REQUIRED TO STAMP THE DESIGN TO ACCOUNT FOR DEPTH OR PROXIMITY TO FOUNDATION, STEEP SLOPES, OR OTHER FACTORS.
14. NO SIDE SEWERS SHALL BE CONNECTED TO ANY HOUSE OR BUILDING UNTIL ALL MANHOLES ARE ADJUSTED TO THE FINISHED GRADE OF THE COMPLETED ASPHALT ROADWAY AND THE ASPHALT PATCH AND SEAL AROUND THE RING ARE ACCEPTED.
15. FOR COMMERCIAL DEVELOPMENTS IN WHICH SOURCES OF GREASE AND/OR OILS MAY BE INTRODUCED TO THE CITY SANITARY SEWER SYSTEM, A CITY APPROVED GREASE INTERCEPTOR SHALL BE INSTALLED DOWNSTREAM FROM THE SOURCE.
16. ONCE SEWER AND ALL OTHER UTILITY CONSTRUCTION IS COMPLETED, ALL SANITARY SEWER MAINS AND SIDE SEWERS SHALL BE TESTED PER SECTION 406 OF THE CITY STANDARDS.



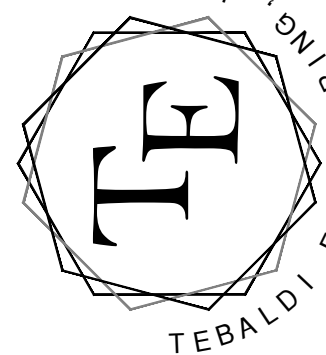
APPROVED

BY _____
CITY OF PUYALLUP
DEVELOPMENT ENGINEERING

DATE _____

NOTE: THIS APPROVAL IS VOID AFTER 180 DAYS FROM APPROVAL DATE.
THE CITY WILL NOT BE RESPONSIBLE FOR ERRORS AND/OR OMISSIONS ON THESE PLANS.
FIELD CONDITIONS MAY DICTATE CHANGES TO THESE PLANS AS DETERMINED BY THE DEVELOPMENT ENGINEERING MANAGER.

P.O. BOX 121
SUMNER, WA 98390
(206) 450-5096
TEBALDIENGINEERING.COM



COPPER

Sheet

C6 of 10



For: BRCF
1002 39TH AVENUE SW, SUITE 104
PUYALLUP, WA 98373
CONTACT: BILL RILEY (253) 881-3033

Title: NOTES AND DETAILS
COPPERBERRY CONDOMINIUMS
4002", 4010, 4018 10TH STREET E
PUYALLUP, WA 98374

1	6/10/23	CMT	CMT	Revised Per City Comments
1	4/8/23	CMT	CMT	Revised Per City Comments
No.	Date	By	Ckd.	Appr.

Revision

PROJECT INFORMATION	
ENGINEERED PRODUCT MANAGER	
ADS SALES REP	
PROJECT NO.	



SC-740 STORMTECH CHAMBER SPECIFICATIONS

- | | | | |
|----|---|----|---|
| 1. | CHAMBERS SHALL BE STORMTECH SC-740. | 1. | STORMTECH SC-740 CHAMBERS SHALL NOT BE INSTALLED UNTIL THE MANUFACTURER'S REPRESENTATIVE HAS COMPLETED A PRE-CONSTRUCTION MEETING WITH THE INSTALLERS. |
| 2. | CHAMBERS SHALL BE ARCH-SHAPE AND SHALL BE MANUFACTURED FROM VIRGIN, IMPACT-MODIFIED POLYPROPYLENE COPOLYMERS. | 2. | STORMTECH SC-740 CHAMBERS SHALL BE INSTALLED IN ACCORDANCE WITH THE "STORMTECH SC-310/SC-740/DC-780 CONSTRUCTION GUIDE". |
| 3. | CHAMBERS SHALL MEET THE REQUIREMENTS OF ASTM F2418, "STANDARD SPECIFICATION FOR POLYPROPYLENE (PP) CORRUGATED WALL STORMWATER COLLECTION CHAMBERS". | 3. | CHAMBERS ARE NOT TO BE BACKFILLED WITH A DOZER OR AN EXCAVATOR SITUATED OVER THE CHAMBERS. STORMTECH RECOMMENDS 3 BACKFILL METHODS:
• STONES/ROCKS LOCATED ON THE CHAMBER BED.
• BACKFILL AS ROWS ARE BUILT USING AN EXCAVATOR ON THE FOUNDATION STONE OR SUBGRADE.
• BACKFILL FROM OUTSIDE THE EXCAVATION USING A LONG BOOM HOE OR EXCAVATOR. |
| 4. | CHAMBER ROWS SHALL PROVIDE CONTINUOUS, UNOBSTRUCTED INTERNAL SPACE WITH NO INTERNAL SUPPORTS THAT WOULD IMPEDE FLOW OR LIMIT ACCESS FOR INSPECTION. | 4. | THE FOUNDATION STONE SHALL BE LEVELLED AND COMPACTED PRIOR TO PLACING CHAMBERS. |
| 5. | THE STRUCTURAL DESIGN OF THE CHAMBERS, THE STRUCTURAL BACKFILL, AND THE INSTALLATION REQUIREMENTS SHALL ENSURE THAT THE LOAD FACTORS AND THE AASHTO LEFD BRIDGE DESIGN SPECIFICATIONS, SECTION 12.12, ARE MET FOR: 1) LONG-DURATION DEAD LOADS AND 2) SHORT-DURATION LIVE LOADS, BASED ON THE AASHTO DESIGN TRUCK WITH CONSIDERATION FOR IMPACT AND MULTIPLE VEHICLE PRESSIONS. | 5. | JOINTS BETWEEN CHAMBERS SHALL BE PROPERLY SEATED PRIOR TO PLACING STONE. |
| 6. | CHAMBERS SHALL BE DESIGNED, TESTED AND ALLOWABLE LOAD CONFIGURATIONS DETERMINED IN ACCORDANCE WITH ASTM F2787, "STANDARD PRACTICE FOR DESIGN, TESTING, DESIGN OF THERMOPLASTIC CORRUGATED WALL STORMWATER COLLECTION CHAMBERS, LOAD CONFIGURATIONS SHALL INCLUDE: 1) INSTANTANEOUS (<1 MIN) ASHITO DESIGN TRUCK LIVE LOAD ON MINIMUM COVER 2) MAXIMUM PERMANENT (75-YR) COVER LOAD AND 3) ALLOWABLE COVER WITH PARKED (1-WEEK) ASHITO DESIGN TRUCK. | 6. | MAINTAIN MINIMUM - 6" (150 mm) SPACING BETWEEN THE CHAMBER ROWS. |
| 7. | REQUIREMENTS FOR HANDLING AND INSTALLATION:
• TO MAINTAIN THE WIDTH OF CHAMBERS DURING SHIPPING AND HANDLING, CHAMBERS SHALL HAVE INTEGRAL, INTERLOCKING STACKING LOGS.
• TO ENSURE A SECURE JOINT DURING INSTALLATION AND BACKFILL, THE HEIGHT OF THE CHAMBER JOINT SHALL NOT BE LESS THAN 2".
• TO ENSURE THE INTEGRITY OF THE ARCH SHAPE DURING INSTALLATION, AT THE ARCH STIFFNESS CONSTANT SHALL BE GREATER THAN OR EQUAL TO THE VALUE AS DEFINED IN SECTION 12.12 OF THE AASHTO LEFD BRIDGE DESIGN SPECIFICATIONS. CHAMBER DEFORMATION DURING INSTALLATION AT ELEVATED TEMPERATURES (ABOVE 73° F / 23° C), CHAMBERS SHALL BE PRODUCED FROM REFLECTIVE GOLD OR YELLOW COLORS. | 7. | THE CONTRACTOR MUST REPORT ANY DISCREPANCIES WITH CHAMBER FOUNDATION MATERIALS BEARING CAPACITIES TO THE SITE DESIGN ENGINEER. |
| 8. | ONLY CHAMBERS THAT ARE APPROVED BY THE SITE DESIGN ENGINEER WILL BE ALLOWED. UPON REQUEST BY THE SITE DESIGN ENGINEER, THE CHAMBER MANUFACTURER SHALL SUBMIT A STRUCTURAL EVALUATION FOR APPROVAL BEFORE DELIVERING CHAMBERS TO THE PROJECT SITE. IT SHALL FOLLOW:
• THE STRUCTURAL EVALUATION SHALL BE SEALED BY A REGISTERED PROFESSIONAL ENGINEER.
• THE STRUCTURAL EVALUATION SHALL BE SUCH THAT THE SAFETY FACTORS ARE GREATER THAN OR EQUAL TO 1.95 FOR DEAD LOAD AND 1.75 FOR LIVE LOAD, THE MINIMUM REQUIRED BY ASTM F2787 AND BY SECTIONS 3.1 AND 12.12 OF THE AASHTO LEFD BRIDGE DESIGN SPECIFICATIONS FOR THERMOPLASTIC PIPE.
• THE TEST DERIVED CREEP MODULUS AS SPECIFIED IN ASTM F2418 SHALL BE USED FOR PERMANENT DEAD LOAD DESIGN EXCEPT THAT IT SHALL BE THE 75-YEAR MODULUS USED FOR DESIGN. | 8. | ADS RECOMMENDS THE USE OF "FLEXSTORM CATCH IT" INSERTS DURING CONSTRUCTION FOR ALL INLETS TO PROTECT THE SUBSURFACE STORMWATER MANAGEMENT SYSTEM FROM CONSTRUCTION SITE RUNOFF. |
| 9. | CHAMBERS AND END CAPS SHALL BE PRODUCED AT AN ISO 9001 CERTIFIED MANUFACTURING FACILITY. | 9. | ADS RECOMMENDS THE USE OF "FLEXSTORM CATCH IT" INSERTS DURING CONSTRUCTION FOR ALL INLETS TO PROTECT THE SUBSURFACE STORMWATER MANAGEMENT SYSTEM FROM CONSTRUCTION SITE RUNOFF. |

1. STORMTRENCH SC-740 CHAMBERS SHALL NOT BE INSTALLED UNTIL THE MANUFACTURER'S REPRESENTATIVE HAS COMPLETED A PRE-CONSTRUCTION MEETING WITH THE INSTALLERS.
2. STORMTRENCH SC-740 CHAMBERS SHALL BE INSTALLED IN ACCORDANCE WITH THE "STORMTRENCH SC-310/SC-740/DC-760 CONSTRUCTION GUIDE".
3. CHAMBERS ARE NOT TO BE BACKFILLED WITH A DOZER OR AN EXCAVATOR SITUATED OVER THE CHAMBERS.
 - STORMTRENCH RECOMMENDS THE FOLLOWING BACKFILL METHODS:
 - STONEHOTHERY LOCATED OFF THE CHAMBER BED.
 - BACKFILL ROWS ARE BUILT USING AN EXCAVATOR ON THE FOUNDATION STONE OR SUBGRADE.
 - BACKFILL FROM OUTSIDE THE EXCAVATION USING A LONG BOOM HOE OR EXCAVATOR.
4. THE FOUNDATION STONE SHALL BE LEVELLED AND COMPACTED PRIOR TO PLACING CHAMBERS.
5. JOINTS BETWEEN CHAMBERS SHALL BE PROPERLY SEATED PRIOR TO PLACING STONE.
6. MAINTAIN MINIMUM - 6" (150 mm) SPACING BETWEEN THE CHAMBER ROWS.
7. EMBEDMENT STONE SURROUNDING CHAMBERS MUST BE A CLEAN, CRUSHED, ANGULAR STONE 3/4" (20-30 mm).
8. THE CONTRACTOR MUST REPORT ANY DISCREPANCIES WITH CHAMBER FOUNDATION MATERIALS BEARING CAPACITIES TO THE SITE DESIGN ENGINEER.
9. ADS RECOMMENDS THE USE OF "FLXSTORM CATCH IT" INSERTS DURING CONSTRUCTION FOR ALL INLETS TO PROTECT THE SUBSURFACE STORMWATER MANAGEMENT SYSTEM FROM CONSTRUCTION SITE RUNOFF.

1. STORMTRENCH SC-740 CHAMBERS SHALL BE INSTALLED IN ACCORDANCE WITH THE "STORMTRENCH SC-310SG-740DC760 CONSTRUCTION GUIDE".

2. THE USE OF CONSTRUCTION EQUIPMENT OVER SC-740 CHAMBERS IS LIMITED.

- NO EQUIPMENT IS ALLOWED ON BARE CHAMBERS.
- NO RUBBER TIERED LOADERS, DUMP TRUCKS, OR EXCAVATORS ARE ALLOWED UNTIL PROPER FILL DEPTHS ARE REACHED IN ACCORDANCE WITH THE "STORMTRENCH SC-310SG-740DC760 CONSTRUCTION GUIDE".
- WEIGHT LIMITS FOR CONSTRUCTION EQUIPMENT CAN BE FOUND IN THE "STORMTRENCH SC-310SG-740DC760 CONSTRUCTION GUIDE".

3. FILL 3' (900 mm) OF STABILIZED CURB MATERIALS OVER THE CHAMBERS IS REQUIRED FOR DUMP TRUCK TRAVEL OR DUMPING.

USE OF A DOZER TO PUSH EMBEDED STONE BETWEEN THE ROWS OF CHAMBERS MAY CAUSE DAMAGE TO THE CHAMBERS AND IS NOT AN ACCEPTABLE BACK METHOD. ANY CHAMBERS DAMAGED BY THE "DUMP AND PUSH" METHOD ARE NOT COVERED UNDER THE STORMTRENCH STANDARD WARRANTY.

CONTACT STORMTRENCH AT 1-888-862-2694 WITH ANY QUESTIONS ON INSTALLATION REQUIREMENTS OR WEIGHT LIMITS FOR CONSTRUCTION EQUIPMENT.

CONTACT STORMTECH AT 1-888-892-2694 WITH ANY QUESTIONS ON INSTALLATION REQUIREMENTS OR WEIGHT LIMITS FOR CONSTRUCTION EQUIPMENT.

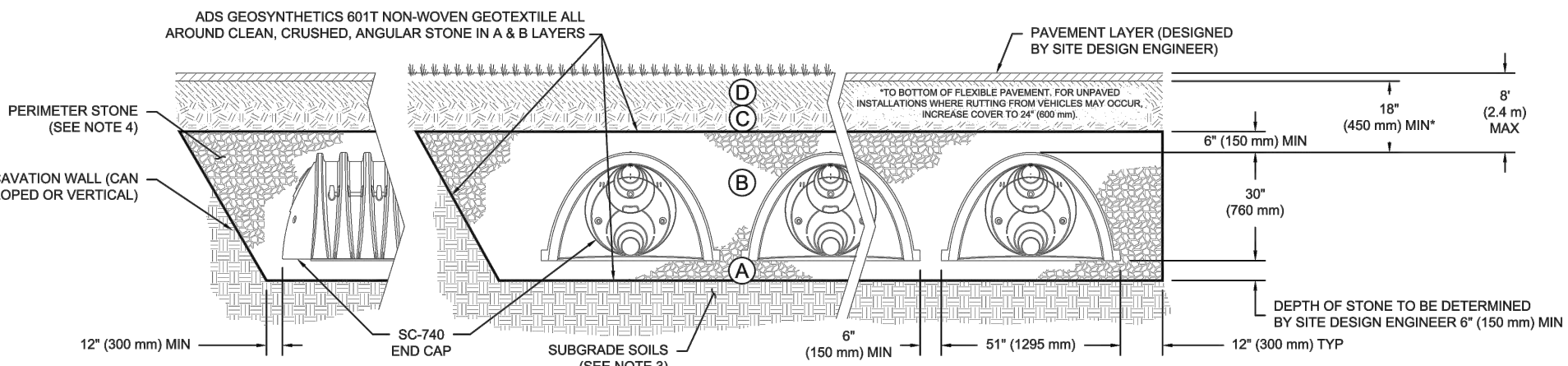
ACCEPTABLE FILL MATERIALS: STORMTECH SC-740 CHAMBER SYSTEMS				
	MATERIAL LOCATION	DESCRIPTION	ASHTO MATERIAL CLASSIFICATIONS	COMPACTION / DENSITY REQUIREMENT
D	FINAL FILL: FILL MATERIAL FOR LAYER 'D' STARTS FROM THE TOP OF THE 'C' LAYER TO THE BOTTOM OF FLEXIBLE PAVEMENT OR UNPAVED FINISHED GRADE ABOVE. NOTE THAT PAVEMENT SUBBASE MAY BE PART OF THE 'D' LAYER.	ANY SOIL/ROCK MATERIALS, NATIVE SOILS, OR PER ENGINEER'S PLANS. CHECK PLANS FOR PAVEMENT UPGRADE REQUIREMENTS.	N/A	PREPARE PER SITE DESIGN ENGINEER'S PLANS. PAVED INSTALLATIONS MAY HAVE STRINGENT MATERIAL AND PREPARATION REQUIREMENTS.
C	INITIAL FILL: FILL MATERIAL FOR LAYER 'C' STARTS FROM THE TOP OF THE EMBEDMENT STONE (B' LAYER) TO 1" (25 mm) ABOVE THE TOP OF THE CHAMBER. NOTE THAT PAVEMENT SUBBASE MAY BE A PART OF THE 'C' LAYER.	GRANULAR WELL-GRADED SOIL/AGGREGATE MIXTURES, <35% FINES OR PROCESSED AGGREGATE. MOST PAVEMENT SUBBASE MATERIALS CAN BE USED IN LIEU OF THIS LAYER.	AASHTO M145 ¹ A-1, A-2-4, A-3 OR AASHTO M43 ¹ 3, 357, 4, 467, 5, 56, 57, 6, 67, 68, 7, 78, 8, 89, 9, 10	BEGIN COMPACTIONS AFTER 12" (300 mm) OF MATERIAL OVER THE CHAMBERS IS REACHED. COMPACT ADDITIONAL LAYERS IN 6" (150 mm) MAX LIFTS TO A MIN. 90% PROCTOR DENSITY FOR WELL GRADED MATERIAL AND 90% RELATIVE DENSITY FOR PROCESSED AGGREGATE MATERIALS. VEHICLE WEIGHT NOT TO EXCEED 12,000 lbs (53 kN). DYNAMIC FORCE NOT TO EXCEED 20,000 lbs (89 kN).
B	EMBEDMENT STONE: FILL SURROUNDING THE CHAMBERS FROM THE FOUNDATION STONE (A' LAYER) TO THE 'C' LAYER ABOVE.	CLEAN, CRUSHED, ANGULAR STONE	AASHTO M43 ¹ 3, 357, 4, 467, 5, 56, 57	NO COMPACTION REQUIRED.
A	FOUNDATION STONE: FILL BELOW CHAMBERS FROM THE SUBGRADE UP TO THE FOOT (BOTTOM) OF THE CHAMBER.	CLEAN, CRUSHED, ANGULAR STONE	AASHTO M43 ¹ 3, 357, 4, 467, 5, 56, 57	PLATE COMPACT OR ROLL TO ACHIEVE A FLAT SURFACE. ^{1,3}

PLEASE NOTE:

1. THE LISTED ASH/TAO DESIGNATIONS ARE FOR GRADATIONS ONLY; THE STONE MUST ALSO BE CLEAN, CRUSHED, ANGULAR. FOR EXAMPLE, A SPECIFICATION FOR #20 STONE WOULD STATE "CLEAN, CRUSHED, ANGULAR NO. 4 (ASH/TAO M3) STONE".

2. THE LISTED ASH/TAO REQUIREMENTS ARE MET FOR "A" LOCATION MATERIALS WHEN PLACED AND COMPACTED IN 15 (TEN) MIN. MAXIMUM LIFTS USING TWO FULL CONES WITH A VIBRATORY COMPACTOR. WHERE INFLATION SURFACE MUST BE COMPROMISED BY COMPACTION, FOR STANDARD DESIGN LOAD CONDITIONS, A FLEET SURFACE MUST BE ACHIEVED BY RAKING OR DRAGGING WITHOUT COMPACTION EQUIPMENT. FOR SPECIAL LOAD DESIGN, CONTACT STORMTRENCH FOR SPECIAL CONSTRUCTION DETAILS.

3. ONCE LAYER C IS PLACED, ANY SUBMATERIAL CAN BE PLACED IN LAYER D UP TO THE FINISHED GRADE. MOST PLASTIC SUBGRADE SOLIDS CAN BE USED TO REPLACE THE MATERIAL REQUIREMENTS OF LAYER C OR D AT THE SITE DESIGN ENGINEER'S DISCRETION.



CHAMBERS SHALL MEET THE REQUIREMENTS OF ASTM F218, "STANDARD SPECIFICATION FOR POLYPROPYLENE (PP) CORRUGATED WALL STORMWATER COLLECTION CHAMBERS".

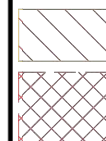
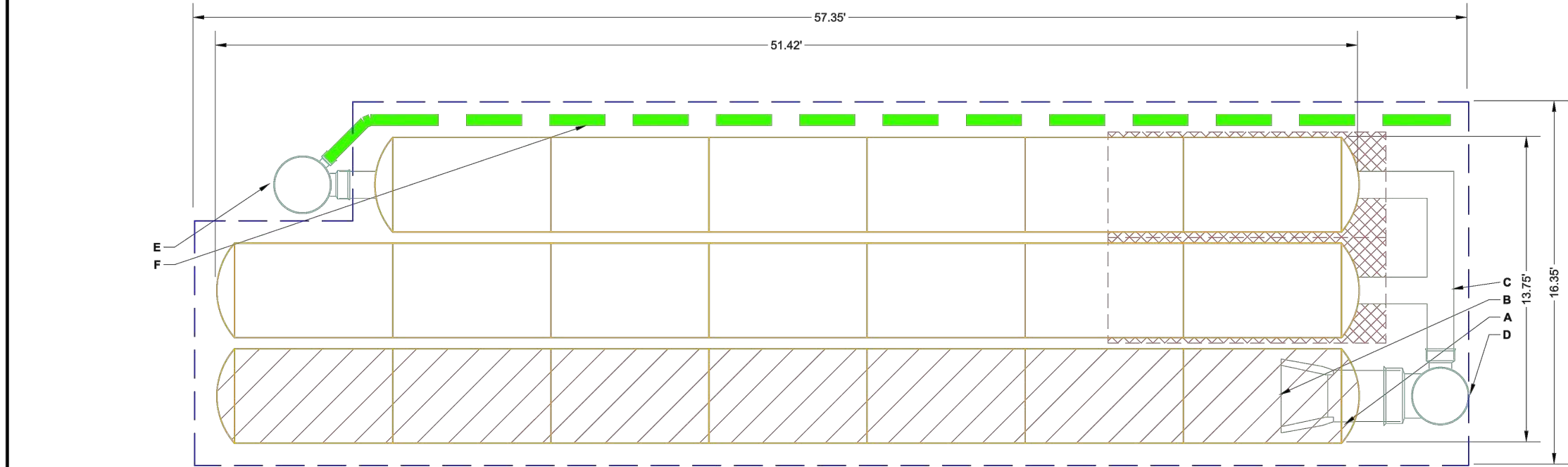
SC-40 CHAMBERS SHALL BE DESIGNED IN ACCORDANCE WITH ASTM F2787 "STANDARD PRACTICE FOR STRUCTURAL DESIGN OF THERMOPLASTIC CORRUGATED WALL STORMWATER COLLECTION CHAMBERS".

CHAMBERS SHALL BE DESIGNED TO RESIST THE EXISTING AND ANTICIPATED SOIL RESISTANCE (ALLOWABLE BEARING CAPACITY OF THE SUBGRADE SOILS AND THE DEPTH OF FOUNDATION STONE WITH CONSIDERATION FOR THE RANGE OF EXPECTED SOIL MOISTURE CONDITIONS).

PERMITTER STONE MUST BE EXTENDED HORIZONTALLY TO THE EXCAVATION WALL FOR BOTH VERTICAL AND SLOPED EXCAVATION WALLS.

REQUIREMENTS FOR HANDLING AND INSTALLATION:

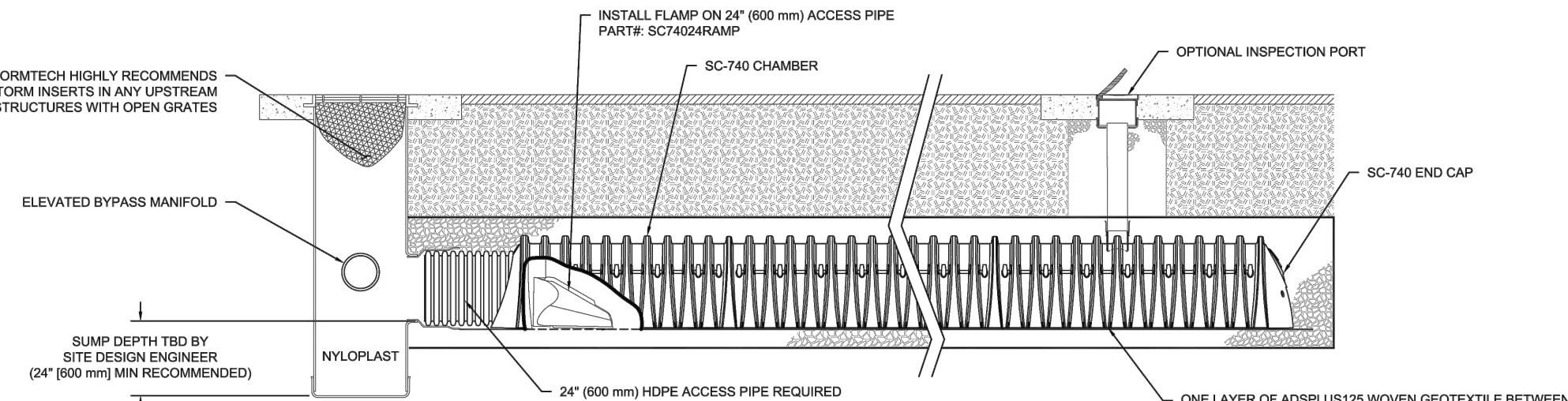
- TO MAINTAIN THE WIDTH OF CHAMBERS DURING SHIPPING AND HANDLING, CHAMBERS SHALL HAVE INTEGRAL, INTERLOCKING STACKING LUGS.
- TO ENSURE A SECURE JOINT DURING INSTALLATION AND BACKFILL, THE HEIGHT OF THE CHAMBER JOINT SHALL NOT BE LESS THAN 2".
- TO ENSURE THE INTEGRITY OF THE ARCH SHAPE DURING INSTALLATION, a) THE ARCH STIFFNESS CONSTANT SHALL BE GREATER THAN OR EQUAL TO 550 LB/IN²/FT. THE AISC IS DEFINED IN SECTION 6.2.8 OF ASTM A242, AND b) TO RESIST CHAMBER DEFORMATION DURING INSTALLATION AT ELEVATED TEMPERATURES (ABOVE 73° F / 23° C), CHAMBERS SHALL BE PRODUCED FROM REFLECTIVE GOLD OR YELLOW COLORED.

[illegible][illegible]

UNDESIGNED SITE OR TO OBTAINING SITE-SPECIFIC INFORMATION ON SOIL CONDITIONS OR BEARING CAPACITY. THE SITE DESIGN ENGINEER IS RESPONSIBLE FOR DETERMINING THE SUITABILITY OF THE SOIL AND PROVIDING THE BEARING CAPACITY OF THE INSITU SOILS. THE BASE STONE DEPTH MAY BE INCREASED OR DECREASED ONCE THIS INFORMATION IS PROVIDED.

NOT FOR CONSTRUCTION: THIS LAYOUT IS FOR DIMENSIONAL PURPOSES ONLY TO PROVE CONCEPT & THE REQUIRED STORAGE VOLUME CAN BE ACHIEVED ON SITE.


• **NOT FOR CONSTRUCTION:** THIS LAYOUT IS FOR DIMENSIONAL PURPOSES ONLY TO PROVE CONCEPT & THE REQUIRED STORAGE VOLUME CAN BE ACHIEVED ON SITE.



SC-740 ISOLATOR ROW PLUS DETAIL
NTS

STEP 1	INSPECT ISOLATOR ROW PLUS FOR SEDIMENT	
	A. INSPECTION PORTS (IF PRESENT)	
	1. REMOVE/OPEN LID ON UPSTREAM INLINE DRAIN	
	2. REMOVE AND CLEAN FLEXFORM FILTER IF INSTALLED	
	B. USING A FLASHLIGHT AND STADIA ROD, MEASURE DEPTH OF SEDIMENT AND RECORD ON MAINTENANCE LOG	
	C. COVER A COMBINATION OF ISOLATOR ROW PLUS FOR VISUAL INSPECTION OF SEDIMENT LEVELS (IF ANY)	
	D. IF SEDIMENT IS AT, OR ABOVE, 9" (80 mm) PROCEED TO STEP 2; IF NOT, PROCEED TO STEP 3.	
STEP 2	ISOLATOR ROW PLUS ROWS	
	1. REMOVE COVER FROM STRUCTURE AT UPSTREAM END OF ISOLATOR ROW PLUS	
	B. USING A FLASHLIGHT, INSPECT THE ISOLATOR ROW PLUS THROUGH OUTLET PIPE	
	C. IF MIRRORS OR POLES OR OTHERS MAY BE USED TO AVOID A CONFINED SPACE ENTRY	
	i) FOLLOW OSHA REGULATIONS FOR CONFINED SPACE ENTRY IF ENTERING MANHOLE	
	B. IF SEDIMENT IS AT, OR ABOVE, 9" (80 mm) PROCEED TO STEP 3; IF NOT, PROCEED TO STEP 3.	
STEP 2	CLEAN OUT ISOLATOR ROW PLUS USING THE JETVAC PROCESS	
	A. JETVAC CLEANING HEADS MUST BE USED AT AN ANGLE OF 45° (1 m) OR MORE IS PREFERRED	
	B. APPLY MULTIPLE PASSES OF JETVAC UNTIL BACKFLOW WATER IS CLEAN	
	C. VACUUM STRUCTURE SUMP AS REQUIRED	
STEP 3	REPLACE ALL COVERS, GRATINGS, FILTERS, AND LIDS; RECORD OBSERVATIONS AND ACTIONS.	
STEP 4	INSPECT AND CLEAN BASINS AND MANHOLES UPSTREAM OF THE STORMWATER SYSTEM.	

1. INSPECT EVERY 6 MONTHS DURING THE FIRST YEAR OF OPERATION. ADJUST THE INSPECTION INTERVAL BASED ON OBSERVATIONS OF SEDIMENT ACCUMULATION AND HIGH WATER ELEVATIONS.
2. CONDUCT JETTING AND VACTORING ANNUALLY OR WHEN INSPECTION SHOWS THAT MAINTENANCE IS NECESSARY.

 ADS 4645 TUBMAN BLVD RICHMOND, OH 45202 1-800-735-7173	Storm Tech® Description System		COPPERBERRY PROJECT #	
	SHEET 2 OF 6	10 5 0	DATE: _____ DRAWN: CT CHECKED: WA	DATE: _____ DRAWN: CT CHECKED: WA

[illegible]

BY _____
CITY OF PUYALLUP
DEVELOPMENT ENGINEERING

DATE _____

NOTE: THIS APPROVAL IS VOID
AFTER 180 DAYS FROM APPROVAL
DATE.

THE CITY WILL NOT BE
RESPONSIBLE FOR ERRORS
AND/OR OMISSIONS ON THESE
PLANS.

FIELD CONDITIONS MAY DICTATE
CHANGES TO THESE PLANS AS
DETERMINED BY THE
DEVELOPMENT ENGINEERING
MANAGER.

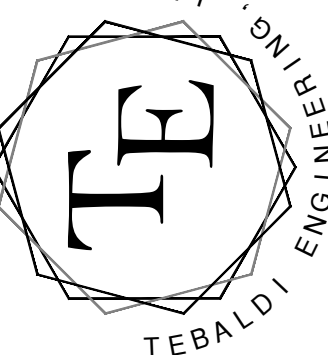
NOTES AND DETAILS
COPPERBERRY CONDOMINIUM
4002, 4010, 4018 10TH STREET
PUYALLUP, WA 98374

For: **BRCF**
1002 39TH AVENUE SW, SUITE 104
PUYALLUP, WA 98373
CONTACT: BILL RILEY (253) 881-3033



Scale: horizontal N/A Vertical N/A

P.O. BOX 121
SUMNER, WA 98390
(206) 450-5096
TEBALDIENGINEERING.COM



C8 10
Sheet

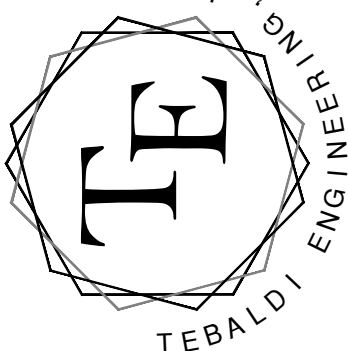
NOTES AND DETAILS
PERBERRY CONDOMINIUMS
, 4010, 4018 10TH STREET E
PUYALLUP, WA 98374

BRCF
1002 39TH AVENUE SW, SUITE 104
PUYALLUP, WA 98373
CONTACT: BILL RILEY (253) 881-3030



Designed	<u>CMT</u>	Scale:
Drawn	<u>CMT</u>	Horizontal
Checked	<u>CMT</u>	N/A
Approved	<u>CMT</u>	Vertical
Date	<u>7/1/22</u>	N/A

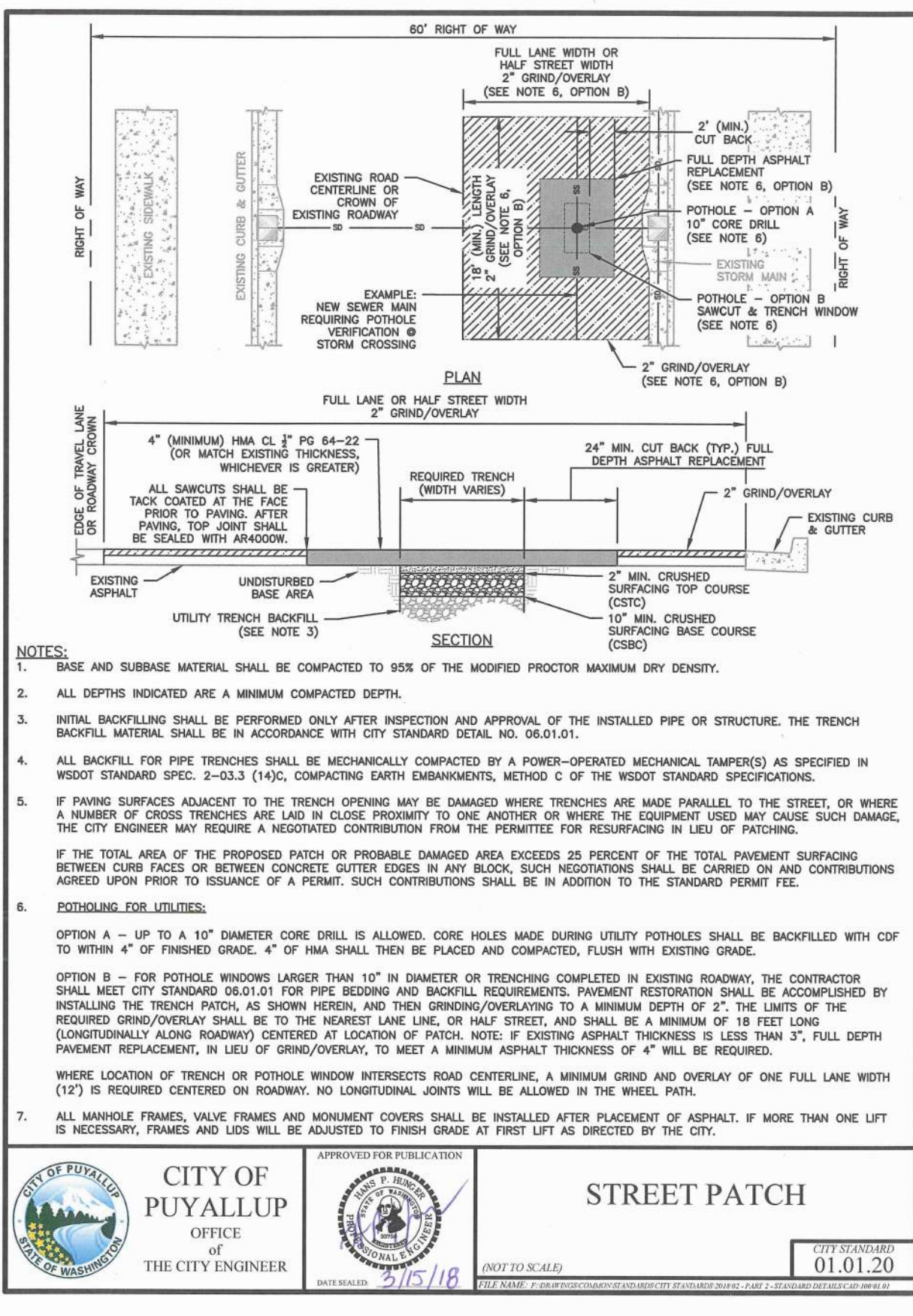
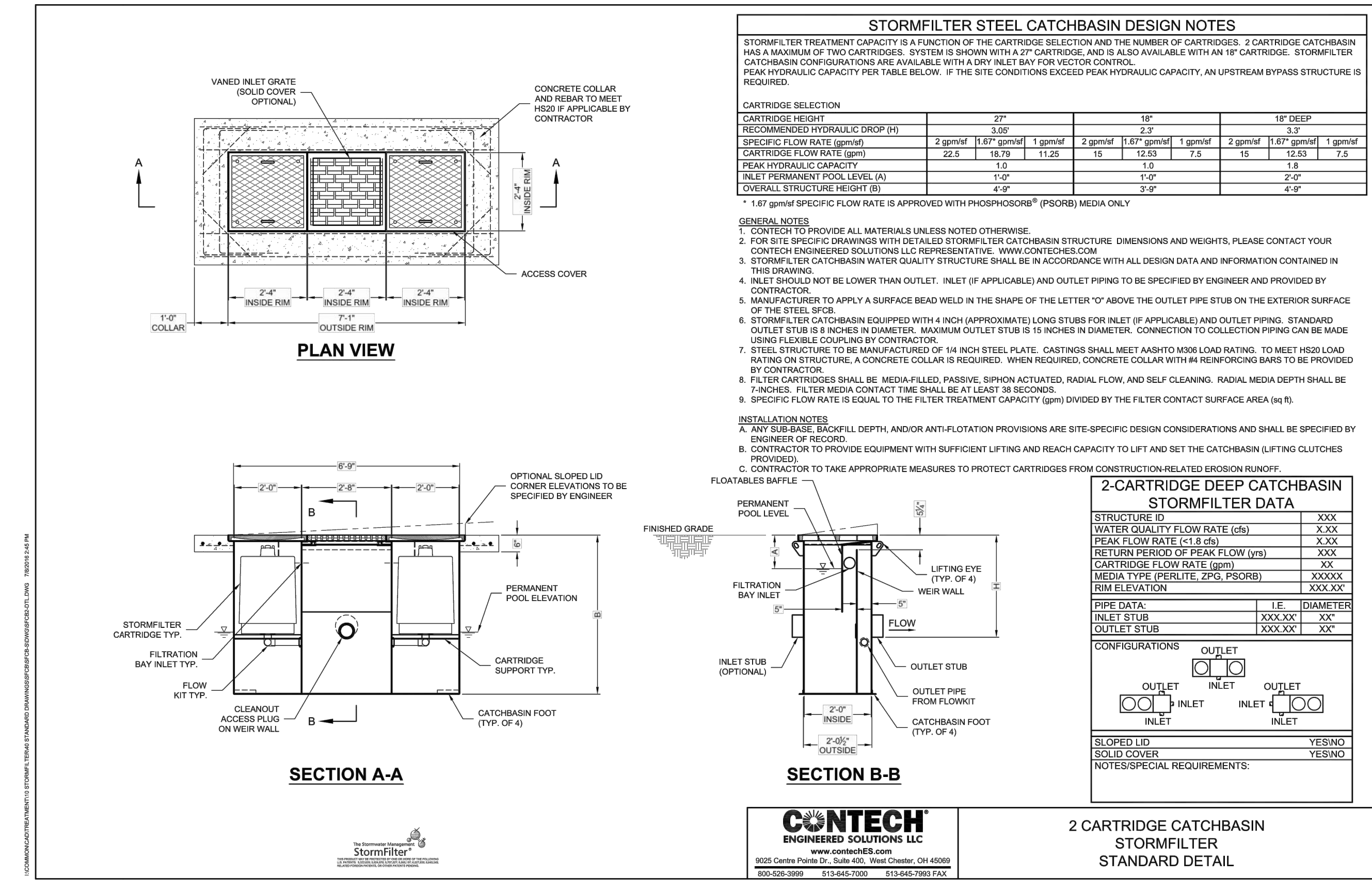
P.O. BOX 121
SUMNER, WA 98390
(206) 450-5096
TEBALDIENGINEERING.COM



Job Number
COPPER

Sheet
C9 10

\\c:\Users\Chris - Linda Tebaldi\OneDrive - Linda Tebaldi\Documents\Tebaldi\Engineering\Projects\Copperberry-D1.dwg	Date/Time: 6/12/2023 10:05 AM	Scale: 0.388863	CHRIS_TEBALDI
---	-------------------------------	-----------------	---------------



City of Puyallup
Development & Permitting Services
ISSUED PERMIT

Building	Planning
Engineering	Public Works
Fire	Traffic

APPROVED

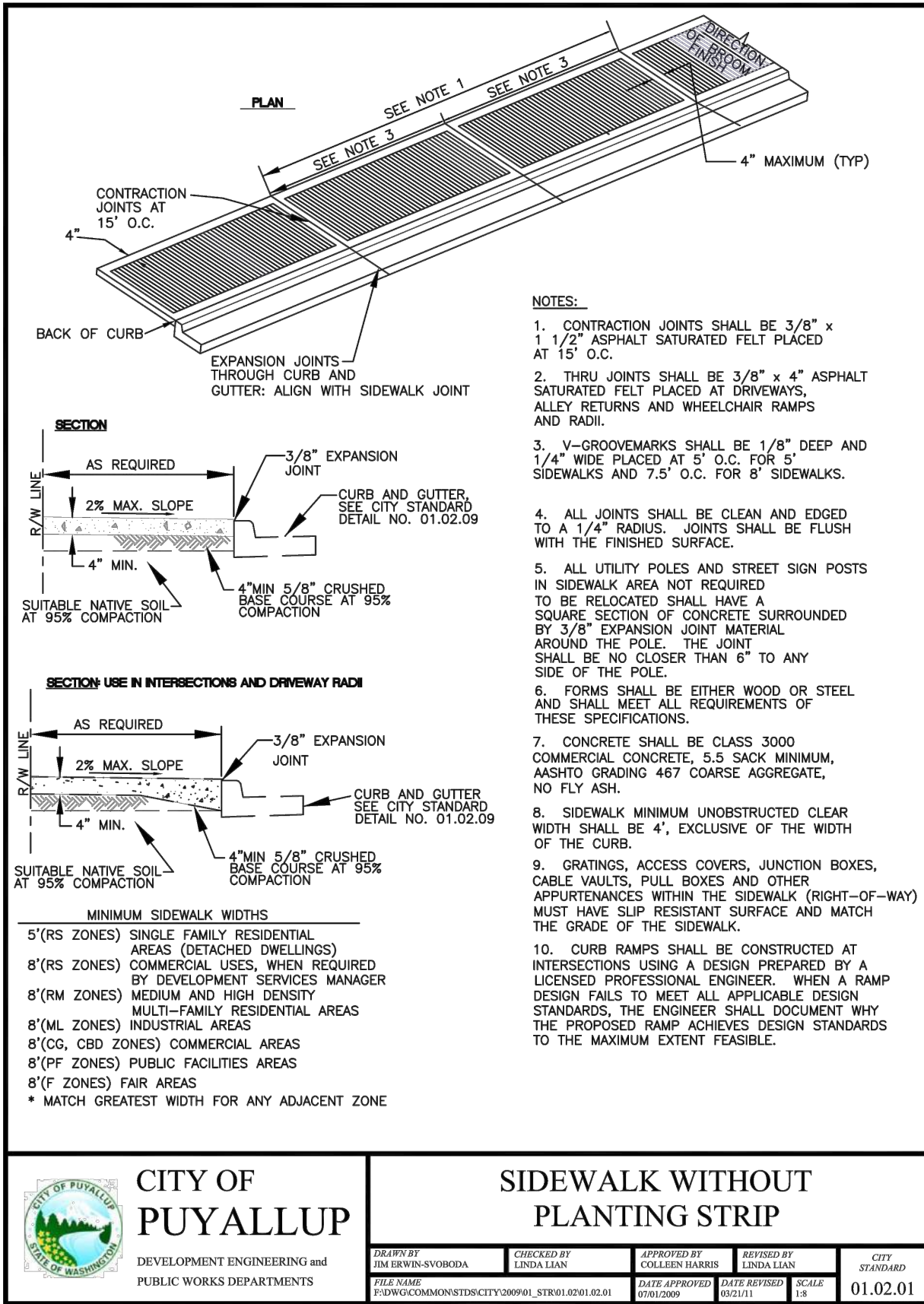
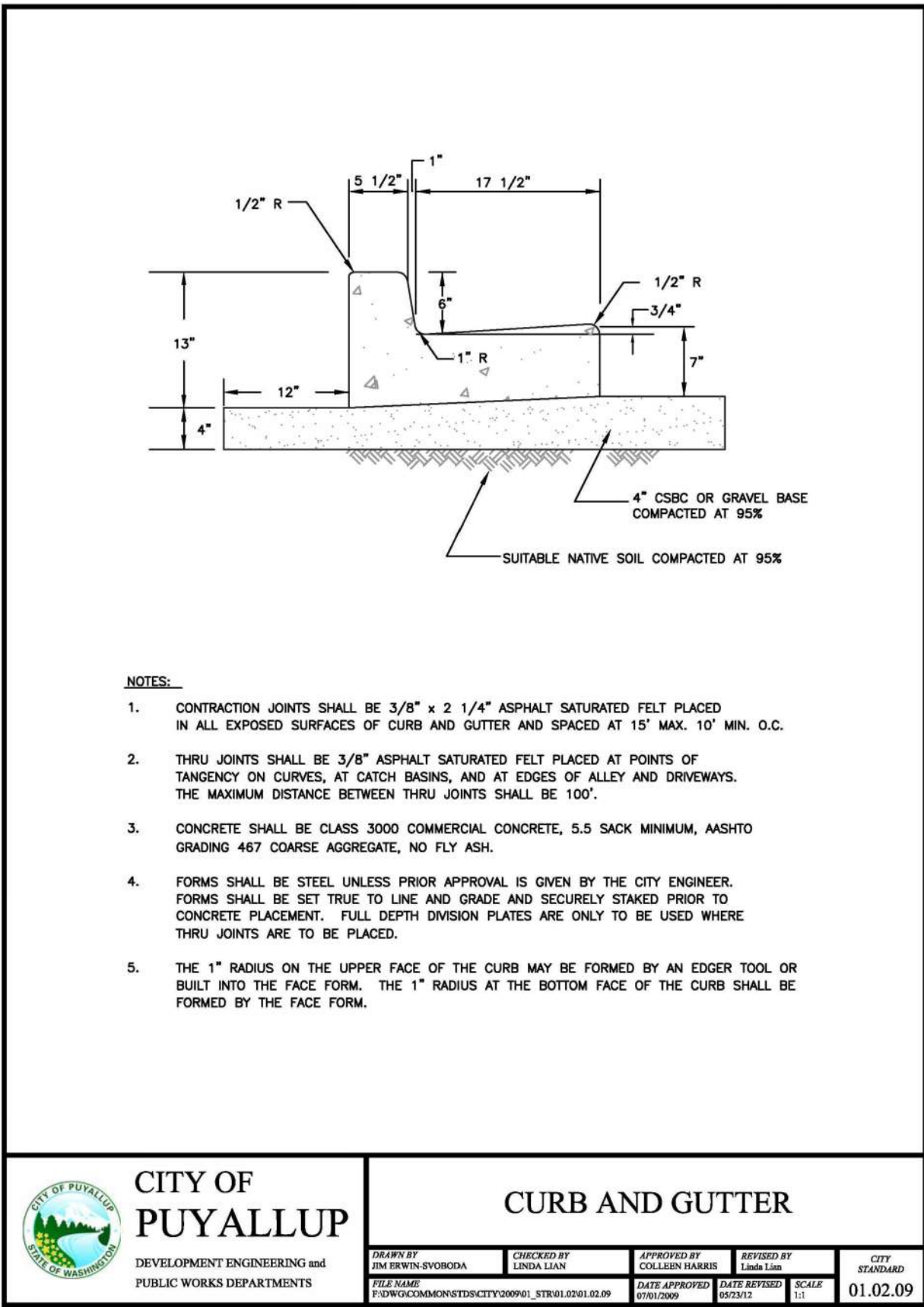
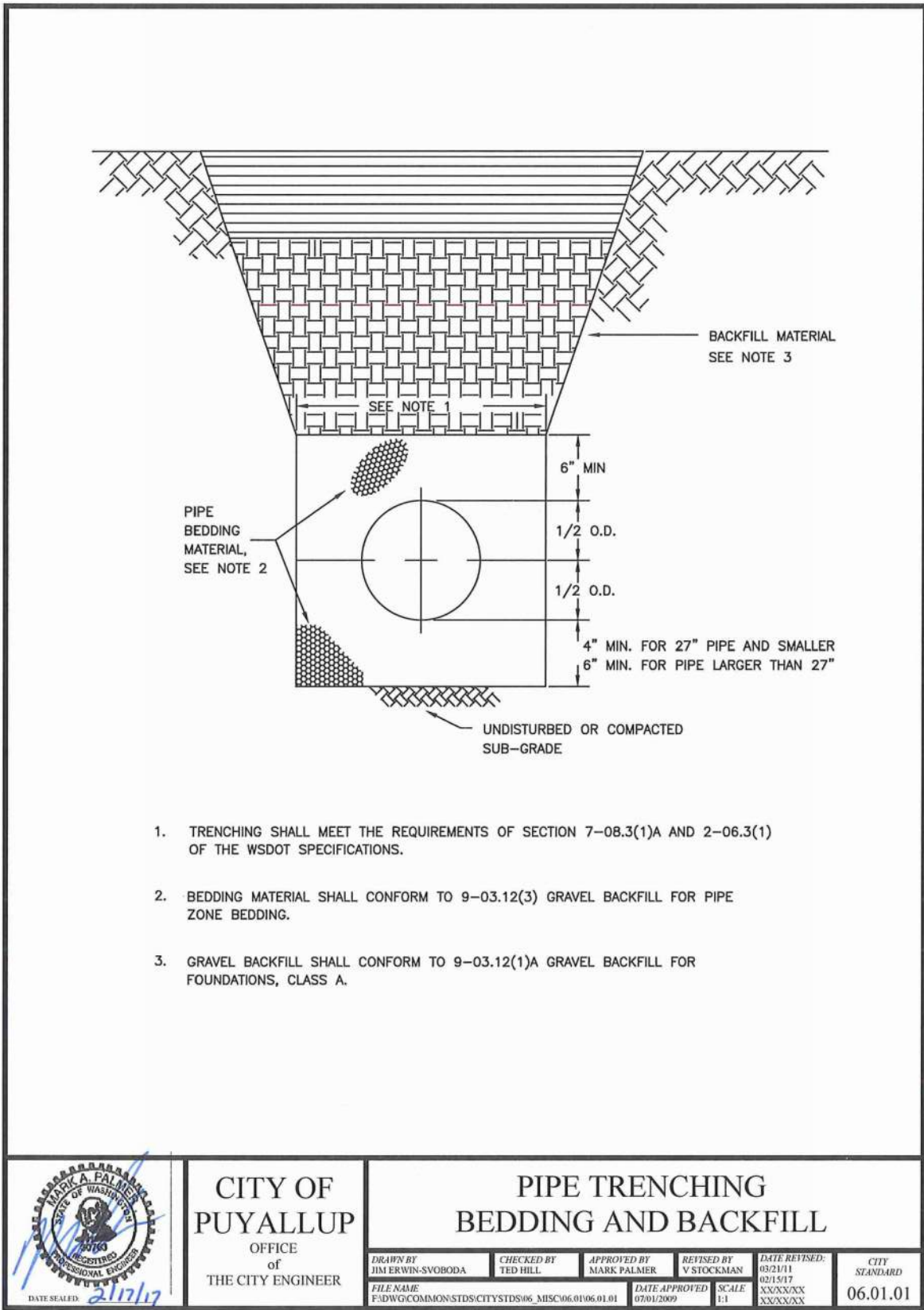
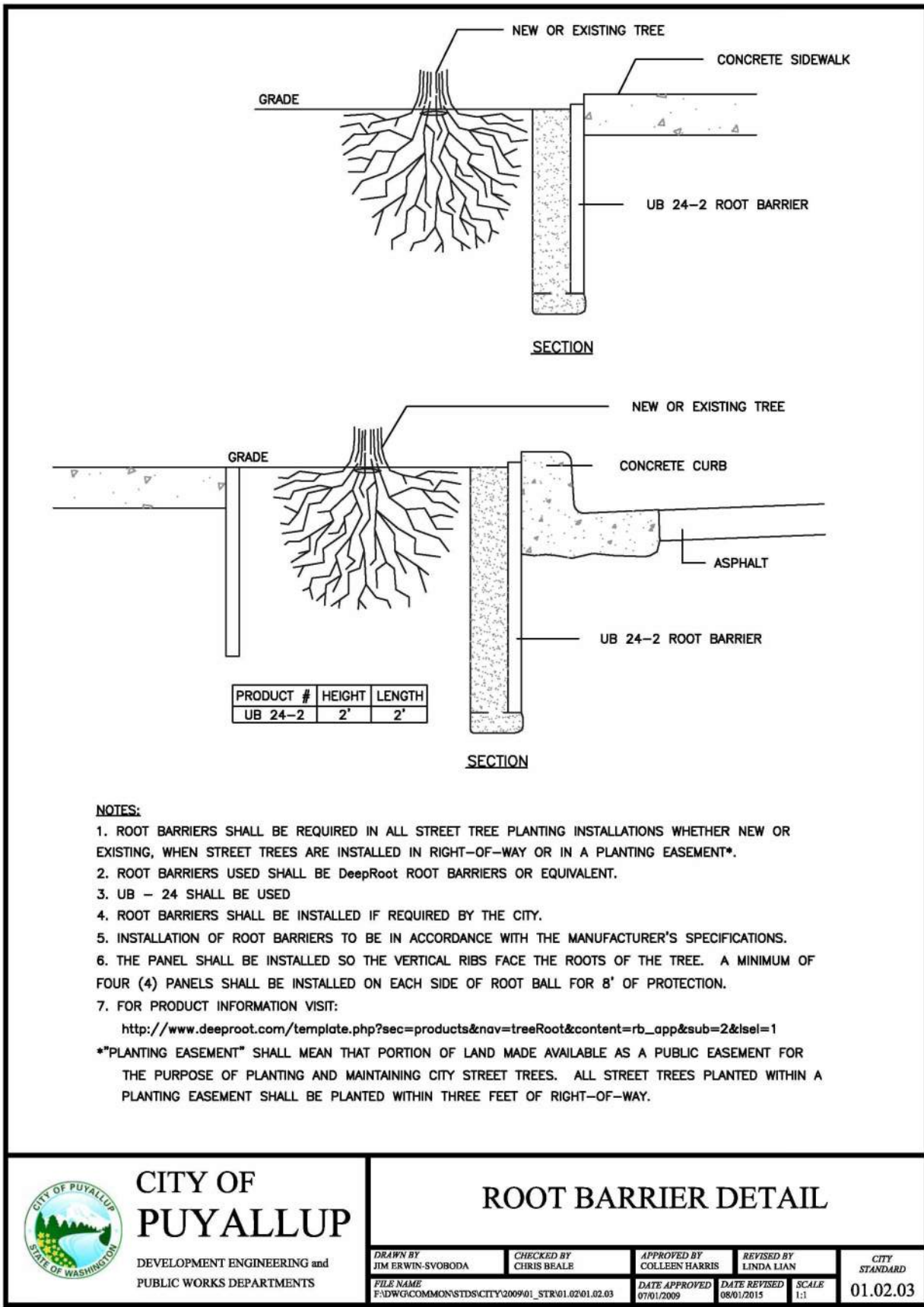
BY _____
 CITY OF PUYALLUP
 DEVELOPMENT ENGINEERING

DATE _____

NOTE: THIS APPROVAL IS VOID
 AFTER 180 DAYS FROM APPROVAL
 DATE.
 THE CITY WILL NOT BE
 RESPONSIBLE FOR ERRORS
 AND/OR OMISSIONS ON THESE
 PLANS.
 FIELD CONDITIONS MAY DICTATE
 CHANGES TO THESE PLANS AS
 DETERMINED BY THE
 DEVELOPMENT ENGINEERING
 MANAGER.

NOTES AND DETAILS

PRFUP20231150



NOTES AND DETAILS
COPPERBERRY CONDOMINIUMS
4002, 4010, 4018 10TH STREET E
PUYALLUP, WA 98374

For: BRCF
1002 39TH AVENUE SW, SUITE 104
PUYALLUP, WA 98373
CONTACT: BILL RILEY (253) 881-3033



Scale: Horizontal N/A, Vertical N/A

Designed: CMT, Draw: CMT, Checked: CMT, Approved: CMT, Date: 7/1/22

City of Puyallup Development Engineering and Public Works Departments

City of Puyallup Development Engineering and Public Works Departments

APPROVED
BY: CITY OF PUYALLUP DEVELOPMENT ENGINEERING
DATE:

NOTE: THIS APPROVAL IS VOID AFTER 180 DAYS FROM APPROVAL DATE. THE CITY WILL NOT BE RESPONSIBLE FOR ERRORS AND/OR OMISSIONS ON THESE PLANS. FIELD CONDITIONS MAY DICTATE CHANGES TO THESE PLANS AS DETERMINED BY THE DEVELOPMENT ENGINEERING MANAGER.

Job Number: COPPER, Sheet: C10 of 10

The applicant is responsible to notify the city of a job start 48 hours in advance using the CityView portal.

The permit and traffic control plans shall be posted at the job site and available to inspectors at all times.

Applicant must provide 48hr. notification to residents within 300 feet of the work area either via door hanger, message board or signs posted visibly along the right-of-way.

Call Jason Little, City Inspector, at 253-244-0387 prior to scheduling any work to avoid construction conflicts

Only work in the ROW is reviewed under this permit. Onsite work must be reviewed with approved civil plans, permit PRCCP20221569 for the Copperberry Condominiums.

This portion of work has been approved under permit PRFUP20231150

Street restoration at this location maybe a complete grind and overlay. Field inspector will make the decision prior to starting the restoration. See City Standard 01.01.20.

Any damage to the sidewalk, curb, gutter or wheelchair ramp will be restored to current ADA and City Standard



Know what's below.
Call before you dig.
Dial 811
(1-800-424-5555)

UTILITY CONFLICT NOTE:

THE CONTRACTOR SHALL BE RESPONSIBLE FOR VERIFYING THE LOCATION, DIMENSION, AND DEPTH OF ALL EXISTING UTILITIES WHETHER SHOWN ON THESE PLANS OR NOT BY POT-HOLING THE UTILITIES AND SURVEYING THE HORIZONTAL AND VERTICAL LOCATION PRIOR TO CONSTRUCTION. THIS SHALL INCLUDE CALLING UTILITY LOCATE 811 AND THEN POT-HOLING ALL OF THE EXISTING UTILITIES AT LOCATIONS OF NEW UTILITY CROSSINGS TO PHYSICALLY VERIFY WHETHER OR NOT CONFLICTS EXIST. LOCATIONS OF SAID UTILITIES AS SHOWN ON THESE PLANS ARE BASED UPON THE UNVERIFIED PUBLIC INFORMATION AND ARE SUBJECT TO VARIATION. IF CONFLICTS SHOULD OCCUR, THE CONTRACTOR SHALL NOTIFY TEBALDI ENGINEERING, LLC. TO RESOLVE ALL PROBLEMS PRIOR TO PROCEEDING WITH CONSTRUCTION.

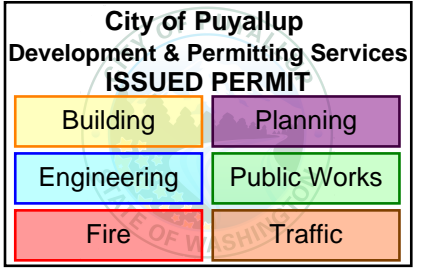
UTILITY SEPARATION NOTE:

PROVIDE A MINIMUM OF 42" OF COVER FOR ALL WATER SERVICE LINES.

PROVIDE MINIMUM 1.5' VERTICAL SEPARATION BETWEEN WATER SERVICE AND SEWER SERVICE LINES.

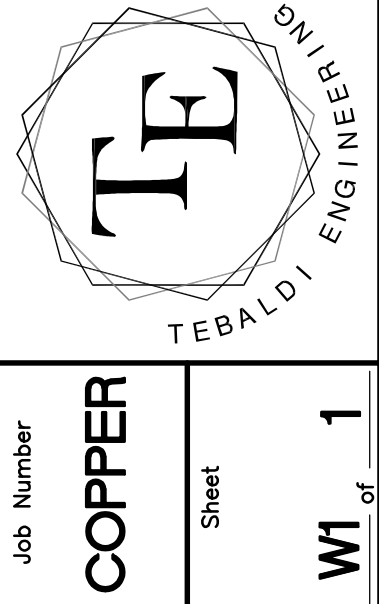
PROVIDE MINIMUM 0.5' VERTICAL SEPARATION BETWEEN WATER SERVICE AND STORM DRAIN LINES.

CONTRACTOR SHALL POT-HOLE EX. UTILITIES PRIOR TO CONSTRUCTION TO ENSURE PROPER SEPARATION CAN BE MET.



FIRE HYDRANT/FDC LOCATION/ACCESS APPROVED	APPROVED
BY: _____ CITY OF PUYALLUP FIRE CODE OFFICIAL	BY: _____ CITY OF PUYALLUP DEVELOPMENT ENGINEERING
DATE: _____	DATE: _____
<small>NOTE: THIS APPROVAL IS VOID AFTER 180 DAYS FROM APPROVAL DATE. THE CITY WILL NOT BE RESPONSIBLE FOR ERRORS AND/OR OMISSIONS ON THESE PLANS. FIELD CONDITIONS MAY DICTATE CHANGES TO THESE PLANS AS DETERMINED BY THE FIRE CODE OFFICIAL.</small>	<small>NOTE: THIS APPROVAL IS VOID AFTER 180 DAYS FROM APPROVAL DATE. THE CITY WILL NOT BE RESPONSIBLE FOR ERRORS AND/OR OMISSIONS ON THESE PLANS. FIELD CONDITIONS MAY DICTATE CHANGES TO THESE PLANS AS DETERMINED BY THE DEVELOPMENT ENGINEERING MANAGER.</small>

4625 - 126TH AVENUE EAST
EDGEWOOD, WA 98372
(206) 450-5096
TEBALDIENGINEERING.COM



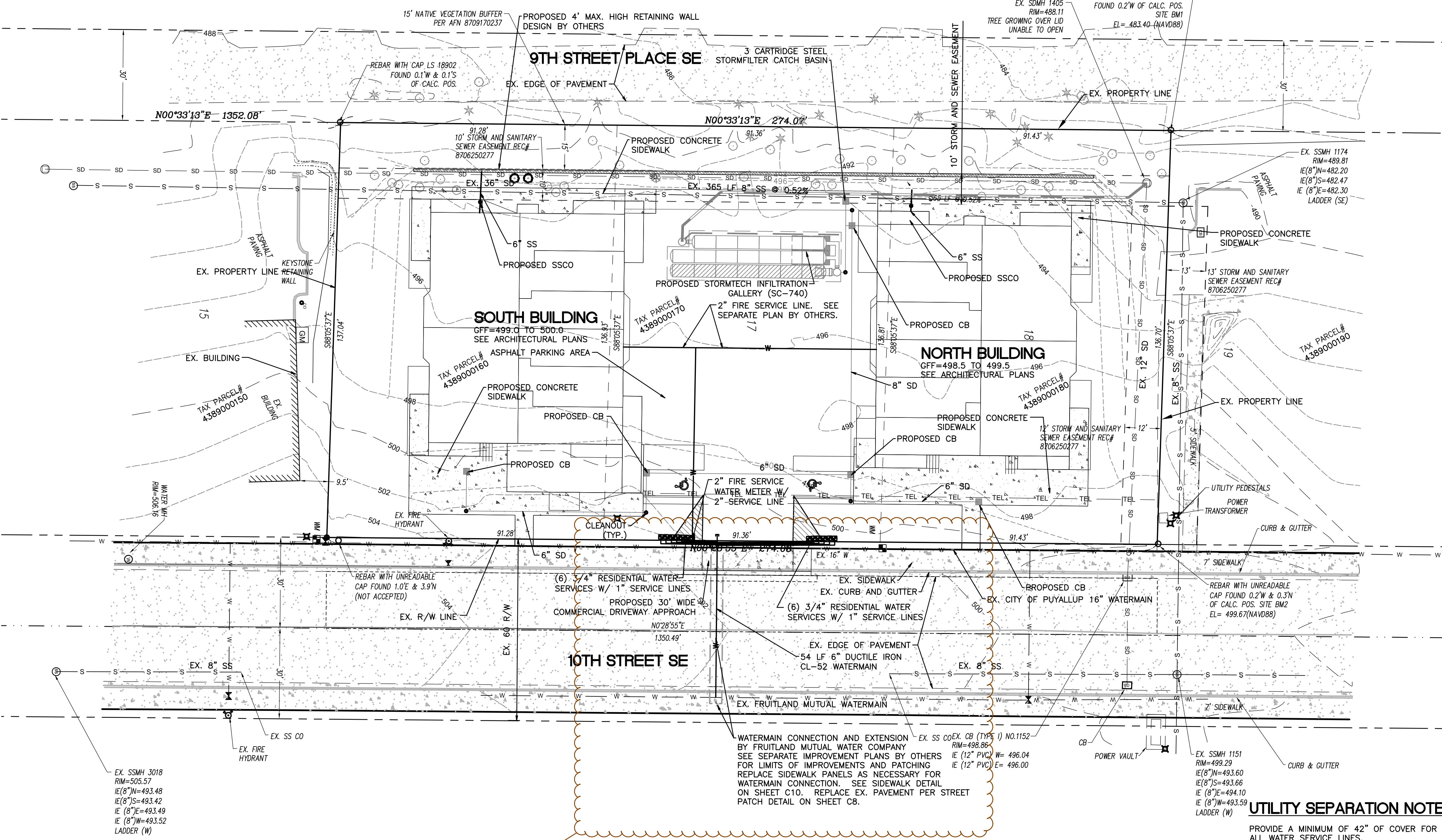
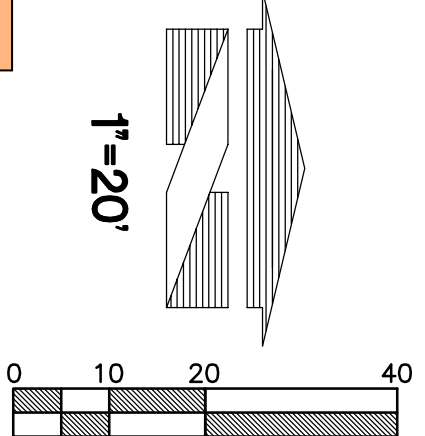
Job Number
COPPER
Sheet
W1 of **1**

A PORTION OF SECTION 10, TOWNSHIP 19N, RANGE 4E, W.M., PIERCE COUNTY

COPPERBERRY CONDOMINIUMS

WATER PLAN

PRFUP20231150



LEGEND

EXISTING

- EXISTING ASPHALT
- EXISTING CONCRETE
- EXISTING CURB
- EXISTING EASEMENT
- EXISTING EDGE OF PAVEMENT
- EXISTING STORM DRAIN
- EXISTING SEWER LINE
- EXISTING UNDERGROUND WATER LINE
- EXISTING UNDERGROUND TELEPHONE LINE
- EXISTING UNDERGROUND POWER
- EXISTING STORM DRAIN CATCH BASIN
- EXISTING CONTOUR
- EXISTING SPOT ELEVATION

PROPOSED

- PROPOSED ASPHALT
- PROPOSED CONCRETE
- PROPOSED PAINT STRIPING
- PROPOSED CURB

Title: **WATER PLAN**
COPPERBERRY CONDOMINIUMS
4002, 4010, 4018 10TH STREET E
PUYALLUP, WA 98374

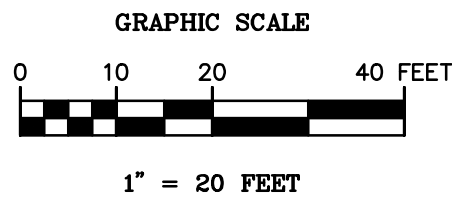
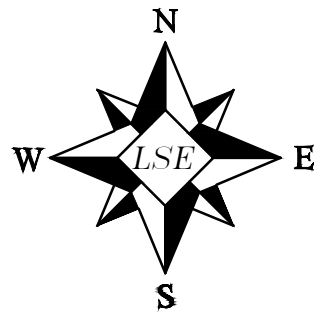
For: **BRCF**
1002 39TH AVENUE SW, SUITE 104
PUYALLUP, WA 98373
CONTACT: BILL RILEY (253) 881-3033

Scale:	Horizontal	Vertical
Designed	CMT	CMT
Drawn	CMT	CMT
Checked	CMT	CMT
Approved	CMT	CMT
Date	7/1/22	N/A

4625 - 126TH AVENUE EAST
EDGEWOOD, WA 98372
(206) 450-5096
TEBALDIENGINEERING.COM

Job Number
COPPER
Sheet
W1 of **1**

LAST EDITED: 5/2/2022 2:37 AM BY: pauline



LEGAL DESCRIPTION:

PER RAINIER TITLE ALTA COMMITMENT FOR TITLE INSURANCE FILE NUMBER 782590RT:

LOTS 16, 17, AND 18, HARTLAND, ACCORDING TO THE PLAT THEREOF RECORDED UNDER RECORDING NO. 8008200268, RECORDS OF PIERCE COUNTY, WASHINGTON;

SITUATE IN THE COUNTY OF PIERCE, STATE OF WASHINGTON.

BASIS OF BEARINGS:

THE WEST LINE OF THE NORTHWEST QUARTER OF THE NORTHEAST QUARTER OF SECTION 10, TOWNSHIP 19 NORTH, RANGE 4 EAST OF THE WILLAMETTE MERIDIAN (N00°33'13"E)

SURVEY PERFORMED BY:

LEROY SURVEYORS & ENGINEERS, INC.

DATE: 05/25/2021

REFERENCE MATERIAL:

HARTLAND PLAT REC# 8008200268

(R1) RECORD OF SURVEY REC# 200811175004

METHODOLOGY:

THIS SURVEY WAS PERFORMED VIA CONVENTIONAL AND RADIAL SURVEY METHODS AND MEET OR EXCEED THE ACCURACY REQUIREMENTS AS SET FORTH BY WAC 332.130.090

THIS SURVEY COMPLIES WITH THE STANDARDS AND GUIDELINES OF THE "SURVEY RECORDING ACT" CHAPTER 58.09 RCW

EQUIPMENT USED:

TRIMBLE S7 2 SECOND TOTAL STATION

GEOMAX ZOOM 90 2 SECOND ROBOTIC TOTAL STATION

TOPOCON HYPER V GPS RECEIVER

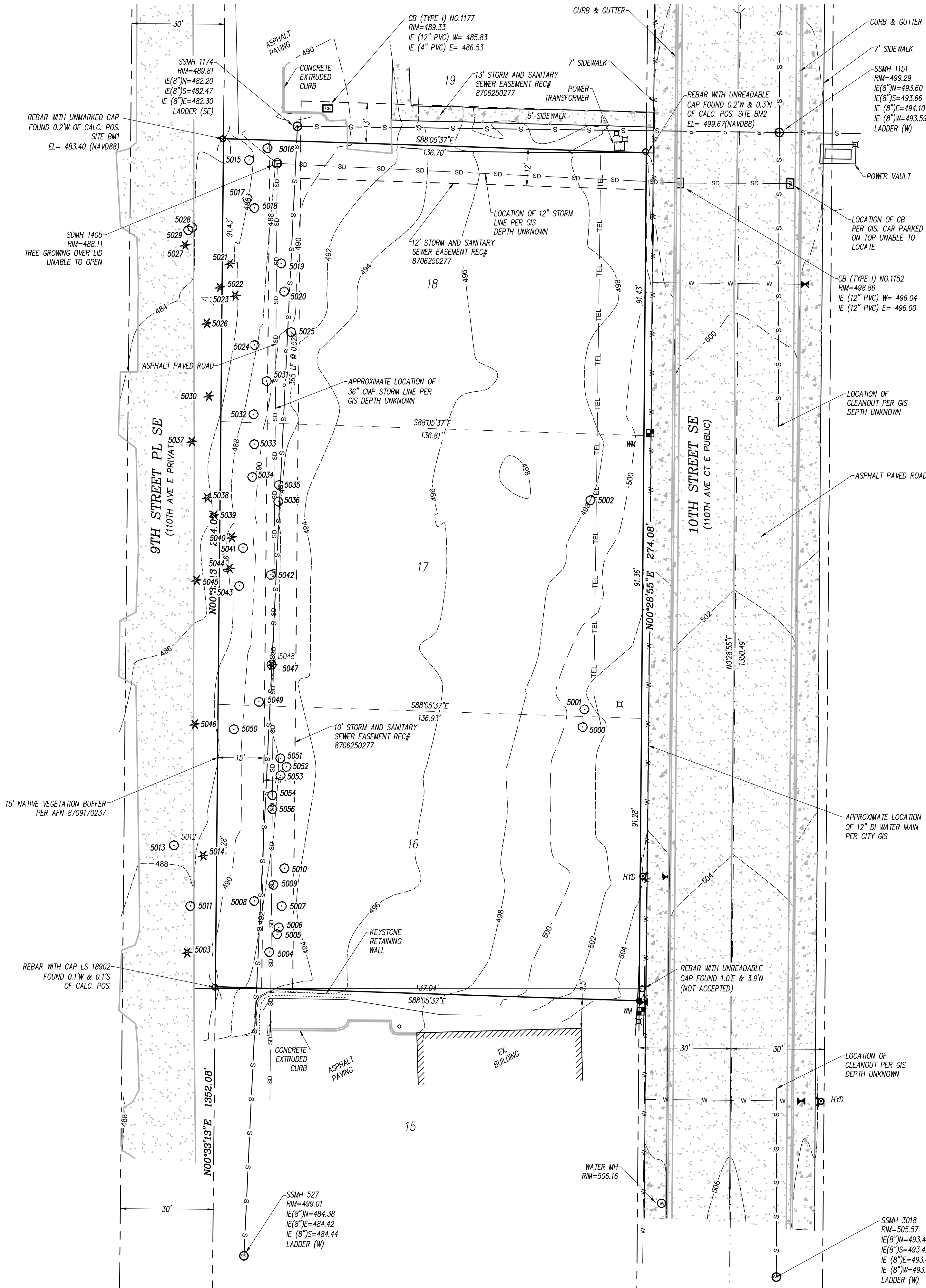
VERTICAL DATUM:

ESTABLISHED USING GPS RTK ROVER CONSTRAINED TO PIERCE COUNTY CONTINUOUSLY OPERATING REFERENCE STATIONS (COPS) GEOID 12B (NAVD 88). SITE BENCHMARKS ARE THE REBARS WITH CAPS FOUND AT THE NORTHWEST AND NORTHEAST CORNERS OF LOT 18, HARTLAND REC# 8008200268, AND NOTED HEREON.

SURVEYOR'S NOTE:

NO PUBLIC OR PRIVATE "UTILITY LOCATES" WERE ORDERED FOR THIS SURVEY. THEREFORE, WE DO NOT PURPORT SHOW ALL UTILITIES THAT MAY OR MAY NOT EXIST AT THE TIME OF THIS SURVEY AND ONLY ABOVE GROUND VISIBLE UTILITIES ARE SHOWN HEREON.

THE EASEMENTS SHOWN HEREON ARE PER RAINIER TITLE ALTA COMMITMENT FOR TITLE INSURANCE FILE NUMBER 782590RT DATED JANUARY 15, 2021:



TOPOGRAPHIC SURVEY

PRFUP20231150

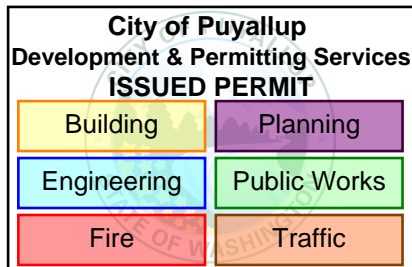
FOR
BRCF

RONALD H. MCCOMBS AND ROBIN B. MCCOMBS

A PORTION OF THE NW 1/4 OF THE NE 1/4 OF
SECTION 10, TOWNSHIP 19 NORTH, RANGE 4 EAST OF THE WILLAMETTE MERIDIAN
COUNTY OF PIERCE, STATE OF WASHINGTON

LEGEND	
	FOUND MONUMENT AS NOTED
	REBAR WITH CAP LS 45788 SET THIS SURVEY
	OTHER CORNERS FOUND AS NOTED
	FIRE HYDRANT
	WATER VALVE LID
	WATER MANHOLE
	WATER METER
	GAS METER
	TELEPHONE RISER
	STORM DRAIN MANHOLE
	SANITARY SEWER MANHOLE
	MONUMENTED CENTERLINE
	SUBJECT PARCEL BOUNDARY
	EXISTING EASEMENT LINE
	RIGHT OF WAY MARGIN
	ORANGE PAINT MARKS
	SANITARY SEWER LINE

TREE SCHEDULE			TREE SCHEDULE			TREE SCHEDULE		
POINT #	DESCRIPTION	STATUS	POINT #	DESCRIPTION	STATUS	POINT #	DESCRIPTION	STATUS
5000	MAPLE* 14		5019	COTTONWOOD* 14		5038	FIR* 15	
5001	MAPLE* 9		5020	COTTONWOOD* 16		5039	FIR* 25	
5002	COTTONWOOD* 22		5021	FIR* 16		5040	FIR* 17	
5003	FIR* 16		5022	FIR* 15		5041	COTTONWOOD* 11	
5004	COTTONWOOD* 9		5023	FIR* 14		5042	COTTONWOOD* 12	
5005	COTTONWOOD* 9		5024	COTTONWOOD* 7		5043	COTTONWOOD* 12	
5006	COTTONWOOD* 22		5025	COTTONWOOD* 8		5044	FIR* 8	
5007	COTTONWOOD* 11		5026	FIR* 13		5045	FIR* 14	
5008	COTTONWOOD* 8		5027	FIR* 6		5046	FIR* 30	
5009	COTTONWOOD* 10		5028	COTTONWOOD* 17		5047	FIR* 18	
5010	COTTONWOOD* 8		5029	COTTONWOOD* 9		5049	COTTONWOOD* 12	
5011	ALDER* 9		5030	FIR* 12		5050	COTTONWOOD* 10	
5012	ALDER* 11		5031	COTTONWOOD* 9		5051	COTTONWOOD* 12	
5013	ALDER* 11		5032	COTTONWOOD* 16		5052	COTTONWOOD* 14	
5014	CEDAR* 18		5033	COTTONWOOD* 10		5053	COTTONWOOD* 13	
5015	COTTONWOOD* 16		5034	MAPLE* 10		5054	COTTONWOOD* 14	
5016	ALDER* 10		5035	COTTONWOOD* 24		5056	COTTONWOOD* 14	
5017	COTTONWOOD* 12		5036	COTTONWOOD* 11				
5018	COTTONWOOD* 10		5037	FIR* 12				



JOB NO.	13410
CLIENT NAME:	BRCF
SITE ADDRESS:	4002 10TH STREET SE
PUYALLUP, WA 98374	
PARCEL NUMBER(S)	4389000180, 0170 & 0160
DRAWN:	P.A.K.
APPROVED:	P.A.K.

BEFORE ANY CONSTRUCTION CONTACT:
CALL BEFORE YOU DIG @ 1-800-424-5555

SITE CONDITIONS

ON 05/25/2021

SITE ADDRESS
4002 10TH STREET SE
PUYALLUP, WA 98374



TOPOGRAPHIC SURVEY

FOR
BILL RILEY

A PORTION OF THE NW 1/4 OF THE NE 1/4 OF
SECTION 10, TOWNSHIP 19 NORTH, RANGE 4 EAST OF THE WILLAMETTE MERIDIAN
COUNTY OF PIERCE, STATE OF WASHINGTON

TOPOGRAPHY