

City of Puyallup
Fire
REVIEWED
FOR
COMPLIANCE

DDrake
08/17/2023
7:47:25 AM



THE APPROVED CONSTRUCTION
PLANS AND ALL ENGINEERING
MUST BE POSTED ON THE JOB AT
ALL INSPECTIONS IN A VISIBLE AND
READILY ACCESSIBLE LOCATION.

Approval of submitted plans is not an
approval of omissions or oversight by this
office or noncompliance with any
applicable regulations of local government.
The contractor is responsible for making
sure that the building complies with all
applicable building codes and regulations of
the local government.

City of Puyallup Development & Permitting Services ISSUED PERMIT			
Building	Planning		
Engineering	Public Works		
Fire		Traffic	

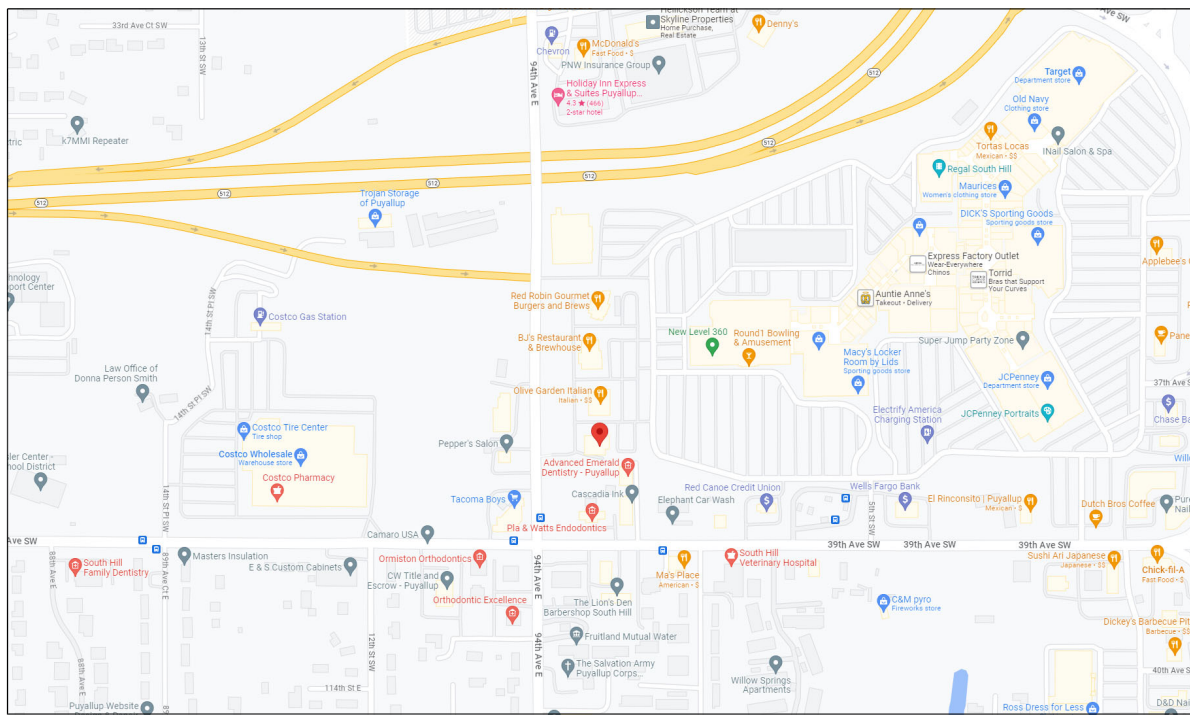
Read Permit Conditions prior to calling for inspection.

CHEERS PUYALLUP TENANT IMPROVEMENT PUYALLUP, WA

GENERAL NOTES

- ALL WALL MOUNTED AUDIBLE & VISUAL SIGNALING APPLIANCES SHALL HAVE THEIR HEIGHTS ABOVE THE FINISHED FLOOR AT 80" TO BOTTOM. NFPA 72, 2016 EDITION, ALLOWS 80"–96" FOR VISUAL DEVICES AND REQUIRES A MINIMUM OF 90" TO TOP FOR AUDIBLE DEVICES OR 6" FROM CEILING, WHICHEVER IS LOWER. FOR SLEEPING AREAS GREATER THAN 16' (LINEAR) VISIBLE NOTIFICATION SHALL BE WITHIN 16' OF PILLOW AND GREATER THAN OR EQUAL TO 24" FROM CEILING TO TOP OF LENS FOR 110CD.
- ALL EQUIPMENT SHALL BE U.L. LISTED.
- ELECTRICAL CONTRACTOR SHALL FURNISH ACCESS PANELS TO AREAS THAT REQUIRE SERVICING, TROUBLESHOOTING ETC.
- DO NOT DEVIATE FROM ANY CONDUIT OR WIRE RUNS SHOWN ON FLOORPLANS WITHOUT PRIOR APPROVAL FROM SYSTEM SUPPLIER. EXCESSIVE VOLTAGE DROP, ADDITIONAL PARTS, ENGINEERING ETC. ARE A RESULT OF DEVIATIONS AND ARE THE RESPONSIBILITY OF THE ELECTRICAL CONTRACTOR.
- DETECTORS SHALL NOT BE LOCATED IN A DIRECT AIR–FLOW NOR CLOSER THAN 3 FEET FROM AN AIR SUPPLY DIFFUSER.
- ALL 120VAC POWER REQUIREMENTS FOR THE FIRE ALARM SYSTEM SHALL BE FURNISHED BY THE ELECTRICAL CONTRACTOR AND SHALL MEET ALL REQUIREMENTS OF THE AHJ.
- SMOKE DETECTOR TESTING SHALL BE ACCOMPLISHED WITH APPROVED SMOKE.
- ALL WIRING, INITIATING DEVICES AND ANNUNCIATOR PANEL SHALL BE SUPERVISED TO THE PRINCIPAL POINT OF ANNUNCIATION. THE FIRE ALARM CONTROL PANEL SHALL SUPERVISE THE ANNUNCIATOR PANEL, INITIATING AND INDICATING DEVICE CIRCUITS.
- ALL WIRING SHALL BE CUT FOR IN AND OUT. WIRING SHALL NOT BE LOOPED THROUGH DEVICES. ALL SPLICED WIRE POSSESSING SHIELDS SHALL HAVE SHIELDS SPLICED AND TAPED TO PREVENT GROUND FAULTS.
- THE ALARM SYSTEM SHALL HAVE AN AUDIBILITY OF NOT LESS THAN 15DB ABOVE AMBIENT NOISE LEVELS. TESTING SHALL BE ACCOMPLISHED WITH A DB METER.
- ALL DEVICES IN THE ALARM SYSTEM SHALL BE COMPATIBLE AND INSTALLED PER MANUFACTURER’S SPECIFICATIONS.
- INSTALLATION SHALL BE IN COMPLIANCE WITH NFPA, SEATTLE FIRE CODE, STATE, NEC AND CONTRACT DRAWINGS.

VICINITY MAP



SHEET INDEX

SHEET #	DESCRIPTION
FA-01	SYSTEM INFORMATION
FA-02	TYPICALS / CALCS / RISER
FA-03	FLOORPLAN

WIRE SCHEDULE AND CONDUIT FILL CHART

WIRE DESIGNATION					
SYMBOL	DESCRIPTION	NUMBER OF CONDUCTORS	SIZE	TYPE	COLOR CODE
D	DATA LINE - ADDRESSABLE LOOP	2 CONDUCTOR	#16	FPLP	
S	STROBE CIRCUIT	2 CONDUCTOR	#14	FPLP	
A	ANNUNCIATOR CIRCUIT	2 CONDUCTOR	#16	FPLP	
P	ANNUNCIATOR CIRCUIT	2 CONDUCTOR	#14	FPLP	
I	INITIATION CIRCUIT	2 CONDUCTOR	#18	FPLP	
T	POWER SUPPLY TRIGGER	2 CONDUCTOR	#14	FPLP	
B	SBUS	4 CONDUCTOR	#18	FPLP	

CONDUIT FILL CHART					
NO. OF CONDUCTORS	VOLTS	WIRE SIZE	TYPE	DIMENSIONS	AREA
2 CONDUCTOR	600V	#12 AWG	THHN/THWN	.244 O.D.	.0467
2 CONDUCTOR	600V	#14 AWG	THHN/THWN TWISTED	.210 O.D.	.0346
2 CONDUCTOR	300V	#18 AWG	FPL TW CABLE	.156 O.D.	.0191

CONDUIT FILL:
CALCULATE THE TOTAL AREA OF THE WIRE BEING RUN IN THE CONDUIT FROM THE TABLE ABOVE. CHOOSE THE SIZE OF CONDUIT BASED ON THE MAXIMUM FILL DIMENSION FROM THE TABLE BELOW THAT DOES NOT EXCEED THE TOTAL AREA OF THE WIRE.

CONDUIT SIZE	MAXIMUM FILL
1/2"	.12 SQUARE INCH
3/4"	.21 SQUARE INCH
1"	.34 SQUARE INCH
1 1/4"	.60 SQUARE INCH
1 1/2"	.82 SQUARE INCH
2"	1.34 SQUARE INCH

SYMBOLS LEGEND

QUANTITY	SYMBOL	DESCRIPTION	MODEL	MFG.	BACKBOX	MOUNTING HEIGHT
1 E		FIRE ALARM CONTROL PANEL (EXISTING)	5820XL	SILENT KNIGHT	PROVIDED	66" A.F.F. TO TOP
---		REMOTE BOOSTER POWER SUPPLY	FLPS-10	SILENT KNIGHT	PROVIDED	66" A.F.F. TO TOP
---		ANNUNCIATOR REMOTE LCD	5860R	SILENT KNIGHT	PROVIDED	66" A.F.F. TO TOP
---		SOLE PATH CELLULAR	SLE-LTEV-FIRE	NAPCO	PROVIDED	66" A.F.F. TO TOP
2		SMOKE DETECTOR (ADDRESSABLE-PHOTO)	SK-PHOTO-W	SILENT KNIGHT	4S BOX W/1G MUD RING	CEILING
3		SMOKE DETECTOR (ABOVE CEILING)	SK-PHOTO-W	SILENT KNIGHT	4S BOX W/1G MUD RING	CEILING
---		HEAT DETECTOR (ADDRESSABLE-HEAT)	SK-HEAT-W	SILENT KNIGHT	4S BOX W/1G MUD RING	CEILING
---		MANUAL PULL STATION (ADDRESSABLE)	SKPULL	SILENT KNIGHT	4S BOX W/1G MUD RING	48" A.F.F. TO CENTER
---		CONTROL MODULE (ADDRESSABLE)	SK-CONTROL	SILENT KNIGHT	4S BOX	VERIFY LOCATION IN FIELD
---		MONITOR MODULE (ADDRESSABLE)	SK-MONITOR	SILENT KNIGHT	4S BOX	VERIFY LOCATION IN FIELD
---		RELAY MODULE (ADDRESSABLE)	SK-RELAY	SILENT KNIGHT	4S BOX	VERIFY LOCATION IN FIELD
---		FIRE ALARM STROBE (WALL MOUNT)	SCRL	SYSTEM SENSOR	4S BOX	80" A.F.F. TO BOTTOM
---		HORN STROBE (CEILING MOUNT)	PC2RL	SYSTEM SENSOR	4S BOX	CEILING
---		HORN STROBE (WALL MOUNT)	P2RL	SYSTEM SENSOR	4S BOX	80" A.F.F. TO BOTTOM
---		FIRE BELL 24VDC	GB10-24	GENTEX	PROVIDED	N/A
---		RELAY DPDT	MR201	EDWARDS	PROVIDED	VERIFY LOCATION IN FIELD
---		END OF LINE RESISTOR	N/A	N/A	N/A	N/A
---	F.B.O.	FURNISHED BY OTHERS	N/A	N/A	N/A	N/A
---	E	EXISTING DEVICE	N/A	N/A	N/A	N/A
---	N/A	NOT APPLICABLE	N/A	N/A	N/A	N/A

SCOPE OF WORK

FIRE ALARM SYSTEM TENANT IMPROVEMENT
EXISTING FIRE ALARM SYSTEM THROUGHOUT- SILENT KNIGHT 5820XL FACP
REMOVE HEAT DETECTOR AT OLD BAR AND DELETE FROM PROGRAMMING, MOVE 2 PULL STATIONS IN DINING AREA FROM DELETED DOORS TO DOUBLE DOORS NEAR FIREPLACE, CHANGE 2 HEATS TO SMOKES IN DINING WEST, ADD 3 SMOKE DETECTORS ABOVE CEILING IN BILLIARD ROOM. PROGRAM AND TEST.

BUILDING DESCRIPTION

RESTAURANT
OCCUPANCY CLASSIFICATION- A2 RESTAURANT
SPRINKLERED- YES

5207 HOLLY CT NE
OLYMPIA, WA 98516
360-918-2200



FIRE ALARM SYSTEM
CHEERS PUYALLUP
3811 9TH ST SW
PUYALLUP, WA 98373

PREPARER:
ALAN HETLAND
NICET CERTIFICATION:
#146032
FIRE ALARM SYSTEMS
LEVEL IV
EXPIRATION DATE:
11/01/2023

PROJECT MANAGER:
Todd Hetland
SCALE: As Noted

NO.	REVISION	DATE
-	SUBMITTAL	7/21/2023

PAGE:
SYSTEM INFORMATION
DATE: 7/21/2023
SHEET: FA-01



IntelliKnight 5820XL is the first fire alarm system to provide you with revolutionary value and performance in addressable sensing technology. The 5820XL FACP offers exclusive, built-in digital communication, distributed intelligent power, a modular design and an expanded, easy to use interface. Powerful features such as drift compensation and maintenance alert are delivered in this powerful FACP from Silent Knight.

For more information about the 5820XL system, or to locate your nearest source, please call 800-328-0103.

5820XL is an intelligent addressable fire alarm control panel (FACP). The basic 5820XL system can be expanded by adding modules such as 5866 remote annunciator, 5815XL signalling line circuit expander, 5824 serial/parallel printer interface module (for printing system reports), and 5895XL intelligent power module. 5820XL supports SD or SK devices. 5820XL also features a powerful built-in dual line fire communicator that allows for reporting of all system activity to a remote monitoring location.



- Built in support for 99 SK detectors and 99 SK modules, expandable to 396 SK detectors and 396 SK modules using System Sensor protocol
 - Built in support for 127 SD devices, expandable to 508 SD devices using the SD protocol
 - Uses standard wire—no shielded or twisted pair required
 - Built-in digital communicator
 - Central station reporting by point or by zone
 - Built-in synchronization for appliances from AMSECO®, Gentex®, Faraday, System Sensor, and Wheelock®
 - Flexpux™ I/O circuits
 - Supports Class B (Style 4) and Class A (Style 6) configuration for SLC, SBUS, and Flexput circuits
 - 13 pre-programmed output cadences (including ANSI-3.41) and 4 programmable outputs
 - Built-in annunciator with 80-character LCD display
 - RS-485 bus provides communication to system accessories
 - Built-in RS-232 and USB interface for programming via PC
 - Built-in Form C trouble relay rated at 2.5 amps at 27.4 VDC
 - Improvements in SKSS software deliver five times faster uploads/downloads
 - Two built-in Form C programmable relays rated at 2.5 amps at 27.4 VDC
 - Plex-1 door option combines a dead front cabinet door with a clear window, limiting access to the panel while providing single button operation of the reset and silence functions
-
- Model 5820XL
- 6-amp power supply and maximum charging capacity of 35 amp hours (An additional cabinet enclosure is required for batteries in excess of 18 amp hours)
- Programmable date setting for Daylight Saving Time
- ## Installation
- The 5820XL can be surface or flush mounted
- ## Compatibility
- The 5820XL signal line circuit (SLC) supports multiple device types of the same protocol:
- SK (System Sensor)
- SD
- You cannot mix SD and SK SLC devices on a FACP.

FRONT VIEW

REAR VIEW

NOTE:
THE MANUAL PULL STATION CAN BE FLUSH MOUNTED ON A SINGLE GANG DEEP BOX OR CAN BE SURFACE MOUNTED ON A 3-SI/O OR 5-SI/O BOX.

Diagram illustrating a typical vertical riser assembly with the following components and dimensions:

- TYPICAL HORN/STROBE**: Indicated by an arrow pointing to the top assembly.
- 4S DEEP BOX**: Indicated by an arrow pointing to the top enclosure.
- 80" A.F.F. TO BOTTOM**: Dimension line indicating the height from the bottom of the assembly to the bottom of the 4S DEEP BOX.
- EMT IF REQUIRED**: Indicated by an arrow pointing to the conduit section.
- MANUAL PULL STATION**: Indicated by an arrow pointing to the lower assembly.
- 1G BACKBOX**: Indicated by an arrow pointing to the lower enclosure.
- 48" A.F.F. TO CENTER**: Dimension line indicating the height from the bottom of the assembly to the center of the MANUAL PULL STATION.

REPLACE HEATS
WITH SMOKES
(EXISTING WIRING)

TO EXISTING
DEVICE/DATA
CIRCUIT

[illegible]

```

graph TD
    A[ISSUED PERMIT] --- B[Building]
    A --- C[Planning]
    A --- D[Engineering]
    A --- E[Public Works]
    A --- F[Fire]
    A --- G[Traffic]
  
```

5207 HOLLY CT NE
OLYMPIA, WA 98516
360-918-2200



FIRE ALARM SYSTEM
CHEERS PUYALLUP
3811 9TH ST SW
PUYALLUP, WA 98373

TYPICALS/CALCS/RISER

PREPARED:
ALAN HETLAND

NICET CERTIFICATION:
#146032
FIRE ALARM SYSTEMS
LEVEL IV

EXPIRATION DATE:
11/01/2023

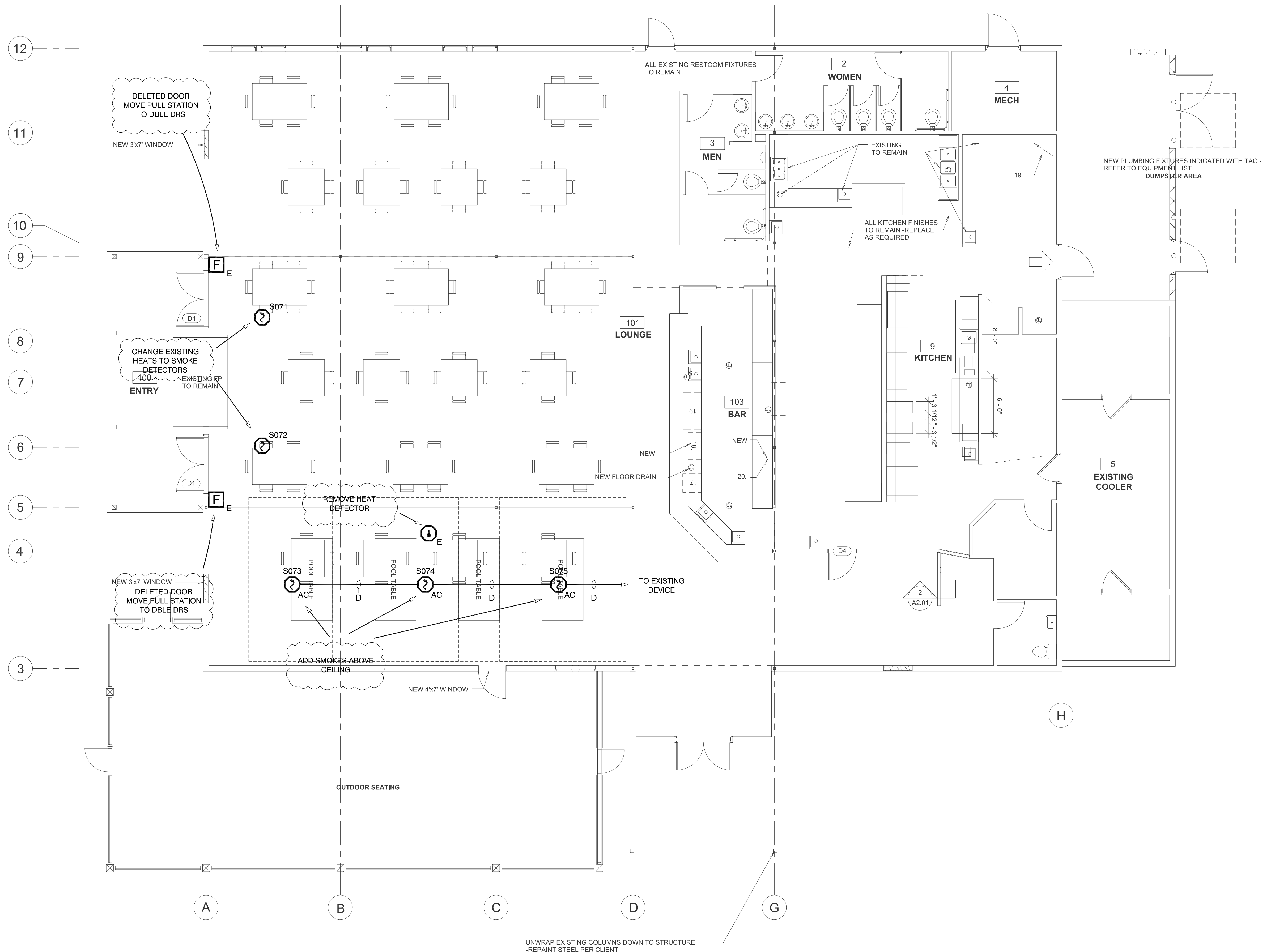
PROJECT MANAGER:
Todd Hetland

SCALE: As Noted

NO.	REVISION	DATE
-	SUBMITTAL	7/21/2020

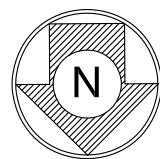
PAGE:
TYPICALS / RISER /
CALCULATIONS
DATE: 7/21/2023
SHEET: FA-02

TYPICAL WIRING AND MOUNTING DETAILS



FIRE ALARM FLOORPLAN

SCALE: 1/8"=1'0"



City of Puyallup Development & Permitting Services ISSUED PERMIT	
Building	Planning
Engineering	Public Works
Fire	Traffic

NO.	REVISION	DATE
-	SUBMITTAL	7/21/2023

PREPARER:
ALAN HETLAND

NICET CERTIFICATION:
#146032
FIRE ALARM SYSTEMS
LEVEL IV

EXPIRATION DATE:
11/01/2023

PROJECT MANAGER:
Todd Hetland

SCALE: As Noted

FIRE ALARM SYSTEM
CHEERS PUYALLUP
3811 9TH ST SW
PUYALLUP, WA 98373

FIRST FLOOR PLAN

5207 HOLLY CT NE
OLYMPIA, WA 98516
360-918-2200

PAGE:
FLOORPLAN

DATE: 7/21/2023

SHEET: FA-03