

SITE PLAN
SCALE: 1" = 50'

- P01 (567336-155441)**
EXISTING DIST. POLE TO REMAIN
REMOVE 1 EXISTING DOWN GUY (W)
DE-ENERGIZE AND REMOVE CABLE A0-4567
REPAIR GROUND (APPROX. 5-7 FEET OF COPPER CUT, STUB STILL INTACT) 1-8A
- P02 (567339-155454)**
EXISTING DIST. POLE TO REMAIN
REMOVE EXISTING SECONDARY RISER 2-24
- P03 (567338-155474)**
EXISTING DISTRIBUTION POLE TO REMAIN
REMOVE EXISTING SECONDARY RISER 2-24
- P08 (567313-155441)**
EXISTING DIST. POLE TO REMAIN
INST. 1 25 KVA 120/240 V 1B OH XFMR
REMOVE 1 EXISTING DOWN GUY (W)
REMOVE EXISTING ANCHOR, CUT 1 FT BELOW GRADE
DE-ENERGIZE AND REMOVE PRIMARY CABLE FROM P09 TO P10 2-24
- P09 (567316-155452)**
REMOVE EXISTING DISTRIBUTION POLE & ASSOCIATED EQUIPMENT
REMOVE XFMR
REMOVE EXISTING DOWN GUYS
REMOVE EXISTING ANCHORS, CUT 1 FT BELOW GRADE 2-26
- P10 (567315-155465)**
REMOVE EXISTING DISTRIBUTION POLE & ASSOCIATED EQUIPMENT
REMOVE XFMR
REMOVE EXISTING STREET LIGHT 2-26
- P11 (567315-155477)**
REMOVE EXISTING DISTRIBUTION POLE & ASSOCIATED EQUIPMENT
REMOVE XFMR 2-26
- P17 (567319-155472)**
REMOVE EXISTING SECONDARY POLE 2-26
- HH01**
ABANDON EXISTING HANDHOLE
- HH02**
ABANDON EXISTING HANDHOLE
- HH06**
ABANDON EXISTING HANDHOLE
- HH07**
ABANDON EXISTING HANDHOLE

POLE RETIREMENT TABLE						TEMP TRANSFERS			ST. LIGHT TRANSFERS		
Wk Loc	Pole Data			Pole		TEL	TV	FIBER	TRAN	RMVD	ID NUMBER
	Grid #	Length	Class	Year	TOPPED						
P09	567316-155452	40'	unknown	1965							
P10	567315-155465	40'	unknown	1965							
P11	567315-155477	40'	unknown	1965							
P17	567319-155472	40'	unknown	"1985"							

WIRE REMOVAL TABLE					
Work Location		Wire Size & Type	Quantity	Length (per conductor)	Remarks
From	To				
P08	P09	PRI #2 ACSR	1	174'	
P08	P09	NEUT #2 ACSR	1	174'	
P09	P10	PRI #2 ACSR	1	126'	
P09	P10	NEUT #2 ACSR	1	126'	
P10	P11	PRI #2 ACSR	1	122'	
P10	P11	NEUT #2 ACSR	1	122'	

TRANSFORMER INSTALLATION (OH)
 Installed at site: **P08**
 Grid Number: 567313-155441
 kVA Rating: 25kVA 120/240V
 Material ID#: 6211250
 Foreman to redline the following information
 Company ID#: _____
 Primary phase connected to: _____
 Tested Secondary Voltage: _____ / _____

TRANSFORMER REMOVAL
 Removed at site: **P10**
 Grid Number: 567315-155477
 kVA Rating: 50
 Foreman to redline the following information
 Company ID#: _____
 Primary phase connected to: _____
 Tested Secondary Voltage: _____ / _____

TRANSFORMER REMOVAL
 Removed at site: **P09**
 Grid Number: 567316-155452
 kVA Rating: 25
 Foreman to redline the following information
 Company ID#: _____
 Primary phase connected to: _____
 Tested Secondary Voltage: _____ / _____

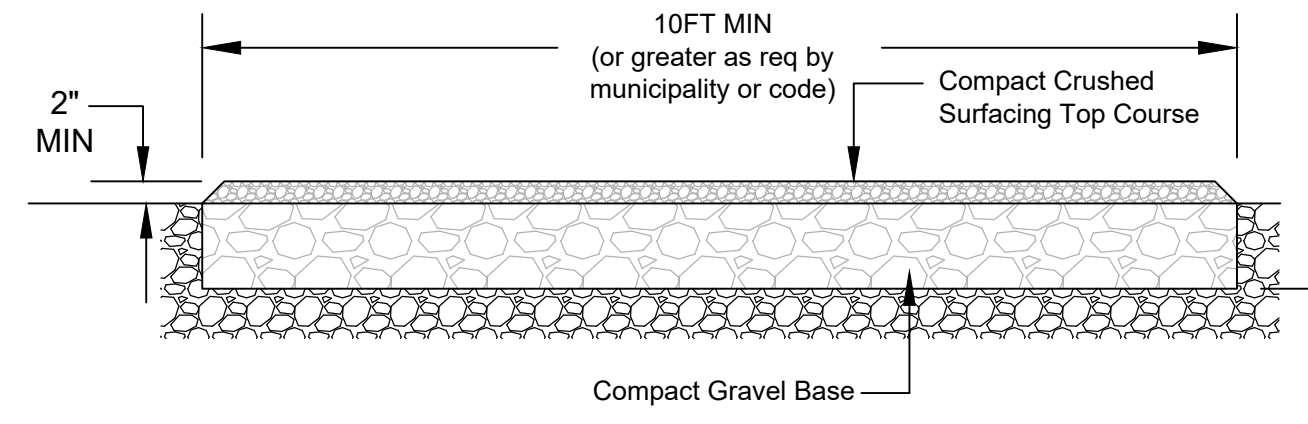
TRANSFORMER REMOVAL
 Removed at site: **P10**
 Grid Number: 567315-155465
 kVA Rating: 50
 Foreman to redline the following information
 Company ID#: _____
 Primary phase connected to: _____
 Tested Secondary Voltage: _____ / _____

City of Puyallup
 Development & Permitting Services
ISSUED PERMIT

Building	Planning
Engineering	Public Works
Fire	Traffic

POWER GENERAL NOTES - COMMERCIAL PROJECT

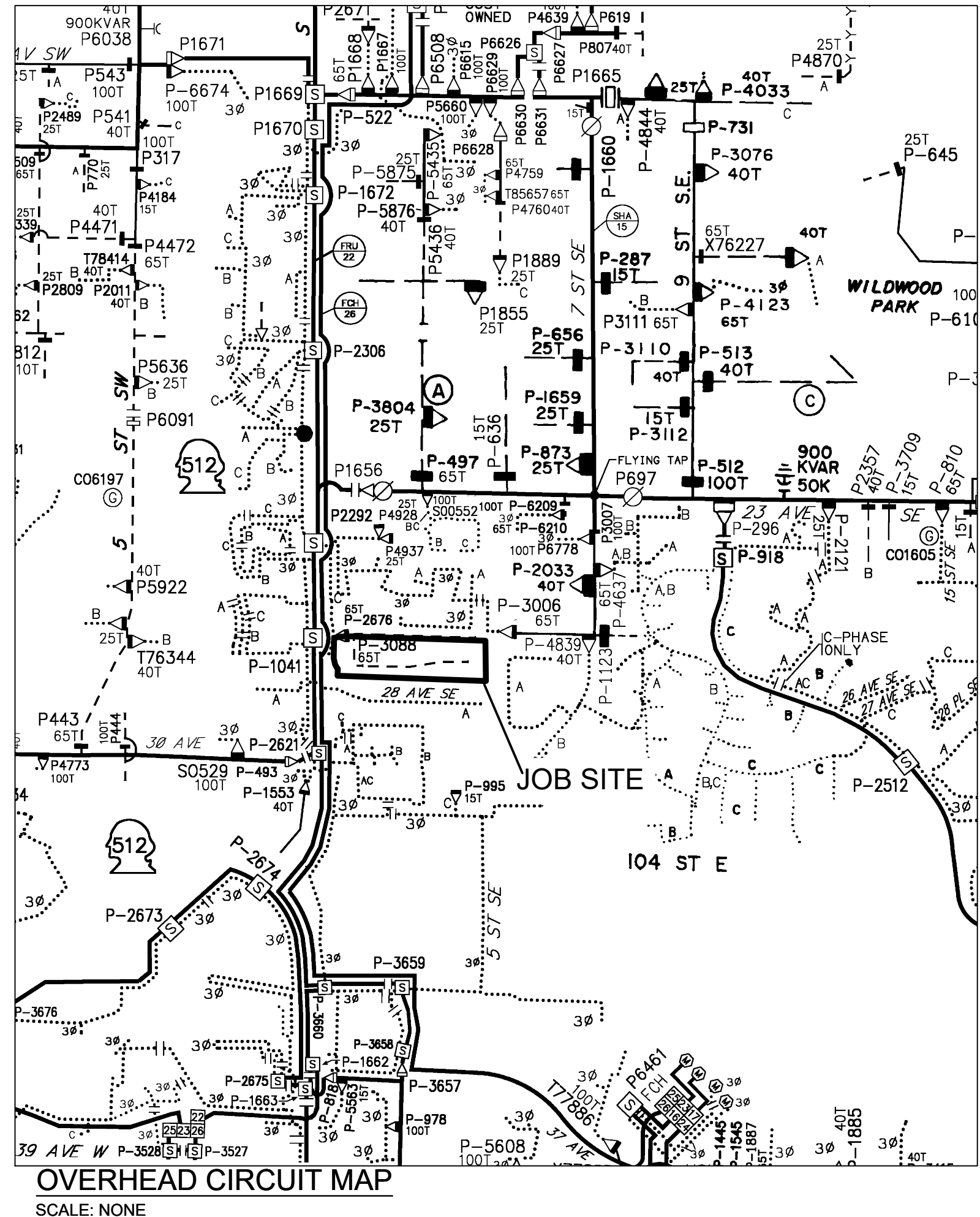
- All materials to be installed in accordance with Puget Sound Energy's (PSE) standards. Any deviation from this work sketch must be AUTHORIZED by PSE's Project Manager and NOTED on the Foreman's Copy.
- All switching arrangements and/or outage arrangements are to be made with the Project Manager at least three (3) working days in advance.
- Contact the Utilities Underground Location Center (1-800-424-5555) at least 48 hours prior to commencing work to get the underground facilities located.
- STAKING: The customer will provide all staking (transformer, handhole, trench, grade, lot, pole, sidewalk, etc.). See sketch and details for locations. Equipment locations must be approved by the Project Manager.
- SITE PREPARATION: The work area will be at or near finished grade, clear of trench spoils or construction materials which would restrict construction and/or equipment access, before work can begin.
- Roads shall be paved or have a compacted, crushed rock base in place.
- CLEARANCES: Transformers require a minimum of 6 feet from fire fighting equipment, 10 feet from combustible walls, overhangs, doors, and windows, and a minimum of 5 feet from the back of curb (or guard posts will be required per PSE standards). All conduits and vaults are to be at least 5 feet away from water, storm and sewer lines when paralleling them in the right of way, and at least 1 foot when crossing them.
- All work is to be done in accordance with local municipal and county permit requirements as applicable.
- Customer/Developer is responsible to provide, install and maintain all secondary service cables, conduits and crossings from the individual unit's meter base to the designated connection point.
- Inclement weather conditions may cause delays in construction times and dates.
- EXCAVATION: The customer is to provide all trenching, backfill, vault excavations, compaction and restoration per this sketch and per PSE standards. A minimum protective cover of 36" is required over PSE's primary voltage equipment and 24" is required of PSE's secondary voltage equipment. The customer will provide any and all shoring or they will side slope the trench to 1:1.



CUSTOMER-PSE REQUIRED EQUIPMENT ACCESS ROAD
SCALE: NONE

EROSION & SEDIMENT CONTROL REQUIREMENTS

EROSION & SEDIMENT CONTROL SHALL BE PER PSE STANDARD PRACTICE 0150.3200 TECHNIQUES FOR TEMPORARY EROSION & SEDIMENT CONTROL & ANY ADDITIONAL LOCAL JURISDICTION REQUIREMENTS. (LOCAL JURISDICTIONS MAY HAVE ADDITIONAL REQUIREMENTS INCLUDING NOTES DETAILING WHERE EROSION OR SEDIMENT CONTROL STRUCTURES ARE TO BE INSTALLED, CROSS SECTION DETAILS OF THE TYPICAL EROSION STRUCTURES, & SPECIAL REQUIREMENTS FOR WORK IN SENSITIVE AREAS.)



OVERHEAD CIRCUIT MAP
SCALE: NONE

FOREMAN (CHECK BOX WHEN COMPLETED)

PSE Equipment LOCKED/SECURED & Work Area left in CLEAN/SAFE Condition.
 Grid, Cable, and Switch numbers INSTALLED & VERIFIED.
 Field Changes RED-LINED on As-Built.
 Material VERIFIED and CHANGES noted on Paperwork.
 Total PRIMARY Cable noted on As-Built.
 Company ID#s RECORDED in correct location on As-Built.
 Indicate correct FUSE SIZE on As-Built & VERIFY proper PHASE.
 Deviations noted on the As-Built and their reason.

I certify that the work performed meets PSE's standards and procedures and that all quality requirements are met.

Foreman's Signature _____ Date _____

PROJECT PHASE	NOTIF#	ORDER#
PWR Superior	514026635	108145513
XFMR Removal	N/A	583072688
Relocation	N/A	N/A
Service Removal	SEE PAGE 3	SEE PAGE 3
Temporary	N/A	N/A
Job Order	N/A	N/A
Distribution	N/A	N/A
Service Stubs	N/A	N/A
HP Svc/MSA	N/A	N/A

Project Manager Contact Information:
 Manager: Danielle Rickett
 Cell Phone: 253-290-2528
 E-Mail: Danielle.Rickett@pse.com

PSE Locates Required YES
 Customer Locates Required YES
 Outages Required YES
 Flagging Required YES

Vicinity Map

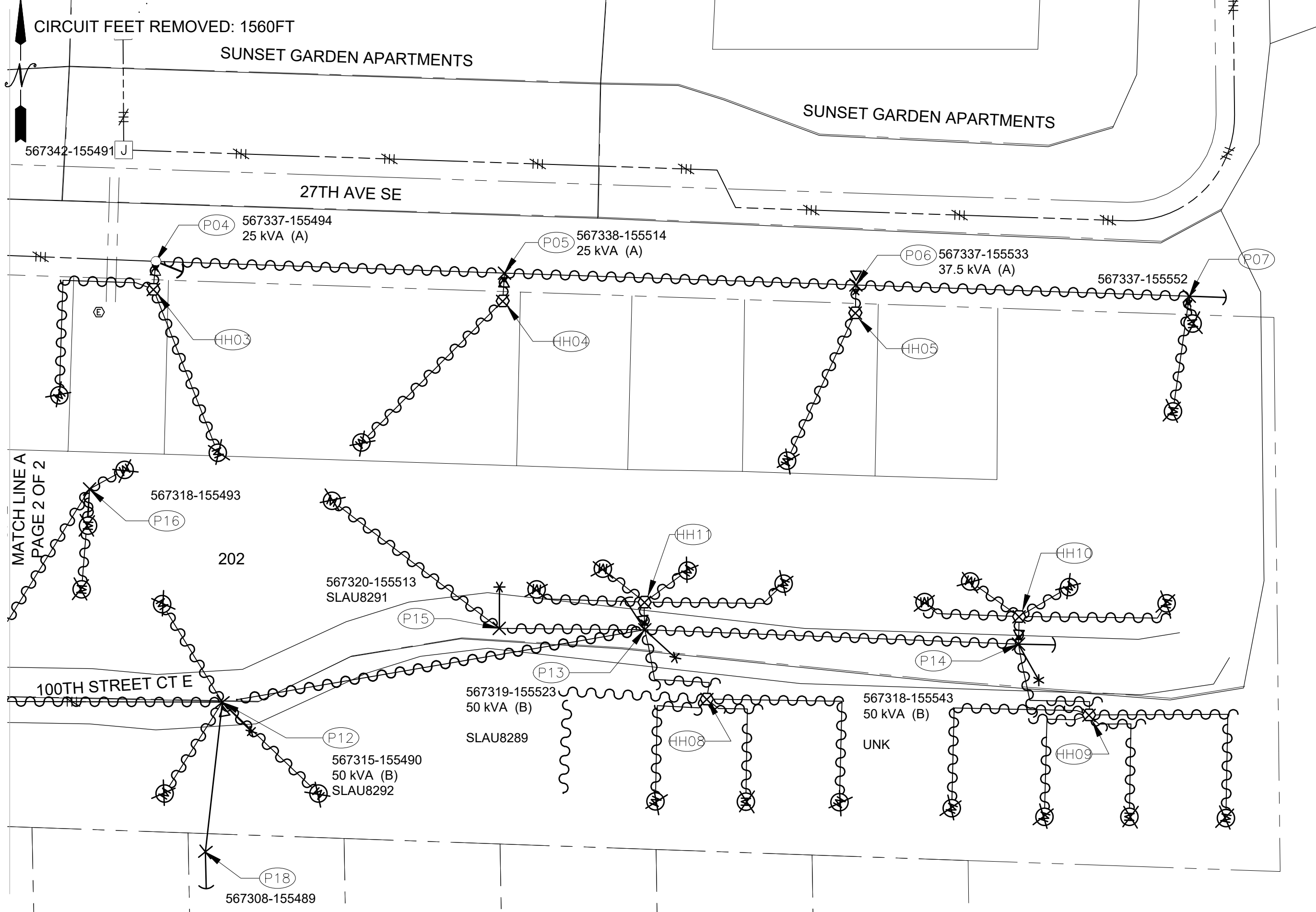
Owner / Developer Contact Info
 BRADLEY HEIGHTS SS LLC
 614 BOYLSTON AVE E
 SEATTLE, WA 98102
 ATTN: ELAINE PALACIOS 206-557-7236 office

FOR CONTACTS BELOW DIAL 1-888-CALL PSE (225-5773)
CALL 811 TWO BUSINESS DAYS BEFORE YOU DIG
 THIS SKETCH NOT TO BE RELIED UPON FOR EXACT LOCATION OF EXISTING FACILITIES

		REAL ESTATE/EASEMENT		PERMIT	
REV#	DATE	FUNCTION	CONTACT	PHONE NO	DATE
3					
2					
1	8/15/23	N. Linville	SCOPE UPDATE		
		ENGR - GAS	N/A	N/A	N/A
		DRAWN BY	I. JOHNSON	253-653-3426	05/01/23
		CHECKED BY			
		APPROVED BY	Ryan Walsh	85-6833	8.15.23
		FOREMAN #1			
		FOREMAN #2			
		MAPPING			

JOINT FACILITIES ARRANGEMENTS					
UTILITIES	CONTACT	PHONE#	PHONE#	PHONE#	PHONE#
N/A	N/A	N/A	N/A	N/A	N/A
N/A	N/A	N/A	N/A	N/A	N/A
N/A	N/A	N/A	N/A	N/A	N/A

PUGET SOUND ENERGY		BRADLEY HEIGHTS SS LLC		INCIDENT		MAOP	
PSE		202 27TH AVE SE, PUYALLUP, WA 98374		N/A		N/A	
DEMO MANY OH 10 XFMRs, POLES, & HHS, INST 1 OH 10 XFMR		Gas Order		Elect Order		108145513	
SCALE AS NOTED		PAGE 12					



SITE PLAN
SCALE: 1" = 50'

The street lights on the north side of 27TH AVE SE are served from utility pole P04. Utility pole P04 shall be protected to avoid disruption to City street light power.

- P04 (567337-155494)**
EXISTING DISTRIBUTION POLE TO REMAIN
INST (1) #2 ACSR AUTOMATIC DE 6031.1040 (DE2115) 1-8E
INST (1) 4" RIGID CLEVIS (E) 6013.0100 (GUYD3SA)
INST (1) 3/8" PRIMARY DOWN-GUY L=10' 6013.0100 (GUYD3SAN)
INST (1) 3/8" NEUTRAL DOWN-GUY L=10' 6012.1000 (ANDH1)
- P05 (567338-155514)**
REMOVE EXISTING DISTRIBUTION POLE & ASSOCIATED EQUIPMENT
REMOVE XFMR 2-26
- P08 (567337-155533)**
REMOVE EXISTING GUY STUB POLE
REMOVE EXISTING ANCHOR, CUT 1 FT BELOW GRADE 2-26
- P07 (567337-155552)**
REMOVE EXISTING DISTRIBUTION POLE & ASSOCIATED EQUIPMENT
REMOVE XFMR
REMOVE EXISTING DOWN GUY
REMOVE EXISTING ANCHOR, CUT 1 FT BELOW GRADE 2-26
- P12 (567315-155490)**
REMOVE EXISTING DISTRIBUTION POLE & ASSOCIATED EQUIPMENT
REMOVE XFMR
REMOVE EXISTING STREET LIGHT 2-26
- P13 (567319-155523)**
REMOVE EXISTING DISTRIBUTION POLE & ASSOCIATED EQUIPMENT
REMOVE XFMR
REMOVE EXISTING DOWN GUY
REMOVE EXISTING ANCHOR, CUT 1 FT BELOW GRADE
REMOVE EXISTING STREET LIGHT 2-26
- P14 (567318-155543)**
REMOVE EXISTING DISTRIBUTION POLE & ASSOCIATED EQUIPMENT
REMOVE XFMR
REMOVE EXISTING DOWN GUY
REMOVE EXISTING ANCHOR, CUT 1 FT BELOW GRADE
REMOVE EXISTING STREET LIGHT 2-26
- P16 (567318-155493)**
REMOVE EXISTING DISTRIBUTION POLE & ASSOCIATED EQUIPMENT
REMOVE XFMR
REMOVE EXISTING DOWN GUY
REMOVE EXISTING ANCHOR, CUT 1 FT BELOW GRADE
REMOVE EXISTING STREET LIGHT 2-26
- P18 (567308-155489)**
REMOVE EXISTING GUY STUB POLE
REMOVE EXISTING ANCHOR, CUT 1 FT BELOW GRADE 2-26

**City of Puyallup
Development & Permitting Services
ISSUED PERMIT**

Building	Planning
Engineering	Public Works
Fire	Traffic

Wk Loc	POLE RETIREMENT TABLE					TEMP TRANSFERS			ST. LIGHT TRANSFERS			
	Grid #	Length	Class	Year	TOPPED	RMVD	TEL	TV	FIBER	TRAN	RMVD	ID NUMBER
P05	567338-155514	40'	unknown	1979								
P06	567337-155533	40'	unknown	1979								
P07	567337-155552	45'	unknown	1979								
P12	567315-155490	40'	unknown	1965								
P13	567319-155523	40'	unknown	1977								
P14	567318-155543	40'	unknown	1965								
P15	567320-155513	30'	unknown	1996								
P16	567318-155493	40'	unknown	"1985"								
P18	567308-155489	40'	unknown	"1985"								

TRANSFORMER REMOVAL
Removed at site: **P05**
Grid Number: **567338-155514**
kVA Rating: **25**
Foreman to reline the following information
Company ID#: _____
Primary phase connected to: _____
Tested Secondary Voltage: _____ / _____

TRANSFORMER REMOVAL
Removed at site: **P13**
Grid Number: **567319-155523**
kVA Rating: **50**
Foreman to reline the following information
Company ID#: _____
Primary phase connected to: _____
Tested Secondary Voltage: _____ / _____

TRANSFORMER REMOVAL
Removed at site: **P06**
Grid Number: **567337-155533**
kVA Rating: **37.5**
Foreman to reline the following information
Company ID#: _____
Primary phase connected to: _____
Tested Secondary Voltage: _____ / _____

TRANSFORMER REMOVAL
Removed at site: **P14**
Grid Number: **567318-155543**
kVA Rating: **50**
Foreman to reline the following information
Company ID#: _____
Primary phase connected to: _____
Tested Secondary Voltage: _____ / _____

TRANSFORMER REMOVAL
Removed at site: **P12**
Grid Number: **567315-155490**
kVA Rating: **50**
Foreman to reline the following information
Company ID#: _____
Primary phase connected to: _____
Tested Secondary Voltage: _____ / _____

METER REMOVALS			
LOCATION	METER	GRID	ORDER #
6000796507	X158633562	567338-155474	108144858
6000431224	X157209942	567338-155474	108144859
6000496369	X157209943	567338-155474	108144881
6000319555	X157225830	567338-155474	108144882
6000609936	X157279220	567315-155465	108144883
6000596326	X157279222	567315-155465	108144884
6000630621	X157279221	567315-155465	108144885
6000505190	X157225826	567315-155465	108144886
6000555162	X157226215	567315-155477	108144887
6000671165	X157226216	567315-155477	108144888
6000623515	X157225827	567315-155477	108144889
6000706805	X157225828	567315-155477	108144890
6000617680	X157225825	567315-155477	108144891
6000402686	X157225821	567315-155490	108144892
6000552494	X157226214	567315-155490	108144893
6000508497	X157226213	567315-155490	108144894
6000684160	X157226218	567315-155490	108144895
6000646013	X157226219	567315-155490	108144896
6000430663	X158623628	567319-155523	108144897
6000493041	X158656891	567319-155523	108144898
6000236886	X157226220	567319-155523	108144899
6000417567	X157226217	567319-155523	108144900
6000404751	X157225816	567319-155523	108144915
6000402254	X157225824	567319-155523	108144916
6000435097	X157225822	567319-155523	108144917
6000427329	X157225823	567319-155523	108144918
6000384961	X157225818	567319-155523	108144919
6000324811	X157226235	567318-155543	108144965
6000424095	X157225817	567318-155543	108144964
6000371912	X157225814	567318-155543	108144963
6000368036	X157226234	567318-155543	108144962
6000833364	X157225819	567318-155543	108144961
6000484215	X157225815	567318-155543	108144800
6000468422	X157225813	567318-155543	108144799
6000453584	X157225820	567318-155543	108144798
6000417533	X157209945	567339-155454	108144797
6000397303	X157209944	567339-155454	108144796
6000480675	X157225812	567339-155454	108144857
6000393282	X157279223	567339-155454	108144949
6000458184	X157225832	567337-155494	108144948
6000371832	X157225831	567337-155494	108144947
6000806079	X162358116	567338-155514	108144946
6001190515	X157225829	567338-155514	108144945
6000777946	J055303029	567337-155533	108144944
6000894428	J056100897	567337-155533	108144943
6000749719	X157226236	567337-155533	108144942
6000869718	X157226233	567337-155533	108144941
6000751549	A015269862	567316-155452	108144920

PRIMARY WIRE REMOVAL TABLE

Work Location	Wire Size & Type	Quantity	Length (per conductor)	Remarks
P04	P05	PRI #2 ACSR	1	198'
P04	P05	NEUT #2 ACSR	1	198'
P05	P06	PRI #2 ACSR	1	184'
P05	P06	NEUT #2 ACSR	1	184'
P11	P12	PRI #2 ACSR	1	144'
P11	P12	NEUT #2 ACSR	1	144'
P12	P15	PRI #2 ACSR	1	225'
P12	P15	NEUT #2 ACSR	1	225'
P13	P14	PRI #2 ACSR	1	203'
P13	P14	NEUT #2 ACSR	1	203'

SECONDARY WIRE REMOVAL TABLE

Work Location	Wire Size & Type	Quantity	Length (per conductor)	Remarks
P04	P05	PRI #2 ACSR	1	198'
P05	P06	PRI #2 ACSR	1	184'
P11	P12	PRI #2 ACSR	1	144'
P12	P13	PRI #2 ACSR	1	225'
P13	P14	PRI #2 ACSR	1	203'

For contacts below dial 1-888-CALL PSE (225-5773)
CALL 811 TWO BUSINESS DAYS BEFORE YOU DIG
THIS SKETCH NOT TO BE RELIED UPON FOR EXACT LOCATION OF EXISTING FACILITIES

REAL ESTATE/EASEMENT		PERMIT	
FUNCTION	CONTACT	PHONE NO	DATE
3		N/A	N/A
2		N/A	N/A
1	8/15/23 N. Linville	SCOPE UPDATE	
ENGR - POWER	I. JOHNSON	253-653-3426	05/01/23
ENGR - GAS	N/A	N/A	N/A
REVIEW#	DATE	BY	DESCRIPTION
1/4 SEC	PIERCE	N/A	Gas Wk Ctr
SE 1/4, Sect 04, T17, R02E	OP MAP	N/A	POWER WK CTR
U-MAP NO (POWER)	OH CKT MAP	N/A	QSWPRE
N/A	UG CKT MAP	N/A	PLAT MAP
	CIRCUIT NO	N/A	CHECKED BY
	MAPPING	N/A	APPROVED BY
			Foreman #1
			Foreman #2

JOINT FACILITIES ARRANGEMENTS			
UTILITIES	CONTACT	PHONE#	DATE
N/A	N/A	N/A	N/A
N/A	N/A	N/A	N/A
N/A	N/A	N/A	N/A

	PUGET SOUND ENERGY PSE	BRADLEY HEIGHTS SS LLC DEMO MANY OH 10 XFMRs, POLES, & HHS, INST 1 OH 10 XFMR 202 27TH AVE SE, PUYALLUP, WA 98374	INCIDENT	MAOP
			N/A	N/A
			Gas Order	Elect Order
			N/A	108145513
			SCALE	PAGE
			AS NOTED	2/2

Aug 15, 2023 - 11:26am J:\Electric_Southwest\PIERCE#\108145513_BRADLEY HEIGHTS MHP_513932583\CAD\108145513-RT_meridian_estates_mhp_4--25--2023.dwg

108145513-R1