

Ductless Split System Indoor Unit Schedule

I.D. No.	Area Served	Mfr.	Model	Cooling Capacity		Heating Capacity		Electrical Data				Line Set	Op. Wt.	Notes
				Total btuh	SEER	Total btuh	COP	Voltage	Ph.	MCA	MOCP			
AH-9	Server	Mitsubishi	PKAA36KA8	36,000	18.8	Not Applicable	-	208/230	1	25	31	3/8" Liquid - 5/8" Gas	46lb	1, 2, 3

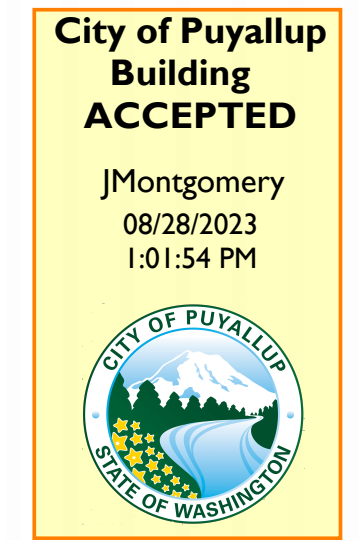
NOTE:
 1) Per Washington State Energy Code, Section C403.3, exception 10, option a economizer is not required.
 2) Provide with condensate pump.
 3) Provide with PAC-YT53CRAU-J (Simple Remote Controller)

Ductless Split System Heat Pumps Outdoor Unit Schedule

I.D. No.	Area Served	Mfr.	Model	Refrigerant	CFM	Cooling Capacity		Heating Capacity		Electrical Data				Op. Wt.
						Total btuh	SEER	Total btuh	COP	Voltage	Ph.	MCA	MOCP	
AC-9	Server	Mitsubishi	PUYA36NKA7	R-410a	920	36,000	18.8	Not Applicable	-	208/230	1	25	31	211 lbs

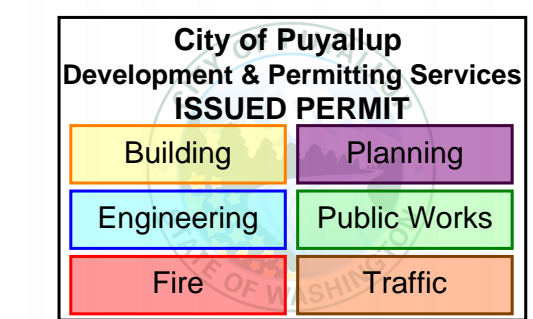
1. Secure to existing pad. (Ground mounted w/ concrete anchors)

PRMH20231200



Separate electrical permit is required with Washington State Department of Labor & Industries.
<https://lni.wa.gov/licensing-permits/electrical/electrical-permits-fee>
 s-and-inspections or Licensing information: Call 1-800-647-0982

FULL SIZED LEDGIBLE PLANS ARE REQUIRED TO BE PROVIDED BY THE PERMITTEE ON SITE FOR ALL INSPECTIONS (MIN. PLAN SIZE 24" X 36")



SCOPE OF WORK:

- Remove existing failing 36 MBH Mitsubishi heat pump and outdoor condenser units.
- Reclaim remaining R22 refrigerant per EPA requirements and dispose units to metal recycling facility.
- Furnish and install (1) new Mitsubishi cooling AC system. (Includes outdoor condenser and indoor wall mounted fan coil.)
- Connect to existing refrigerant piping as found.
- Connect to existing condensate.
- Disconnect and reconnect 208V-1phase electrical circuit for the HVAC unit. Includes installing new disconnect box, fuses, and electrical whip.
- All work to be performed by our in-house licensed electricians.
- CTS. Check, test, and start new unit to ensure it is operating properly.
- Provide owner's manual and instructions.
- One-year warranty on all materials installed and workmanship.
- Connect to existing supply and return duct as found

GENERAL NOTES

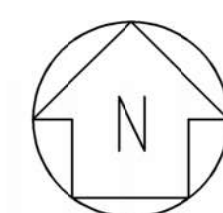
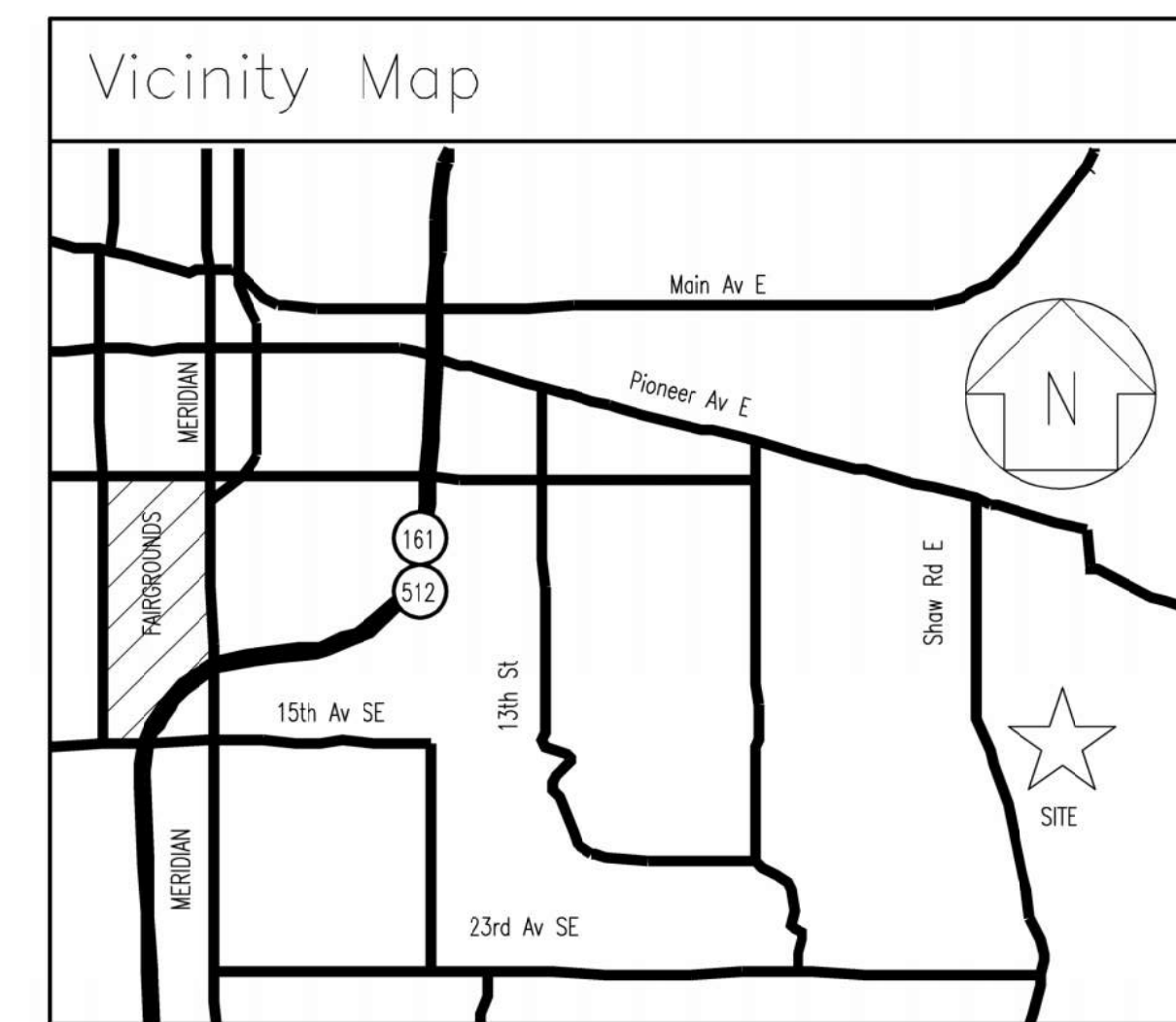
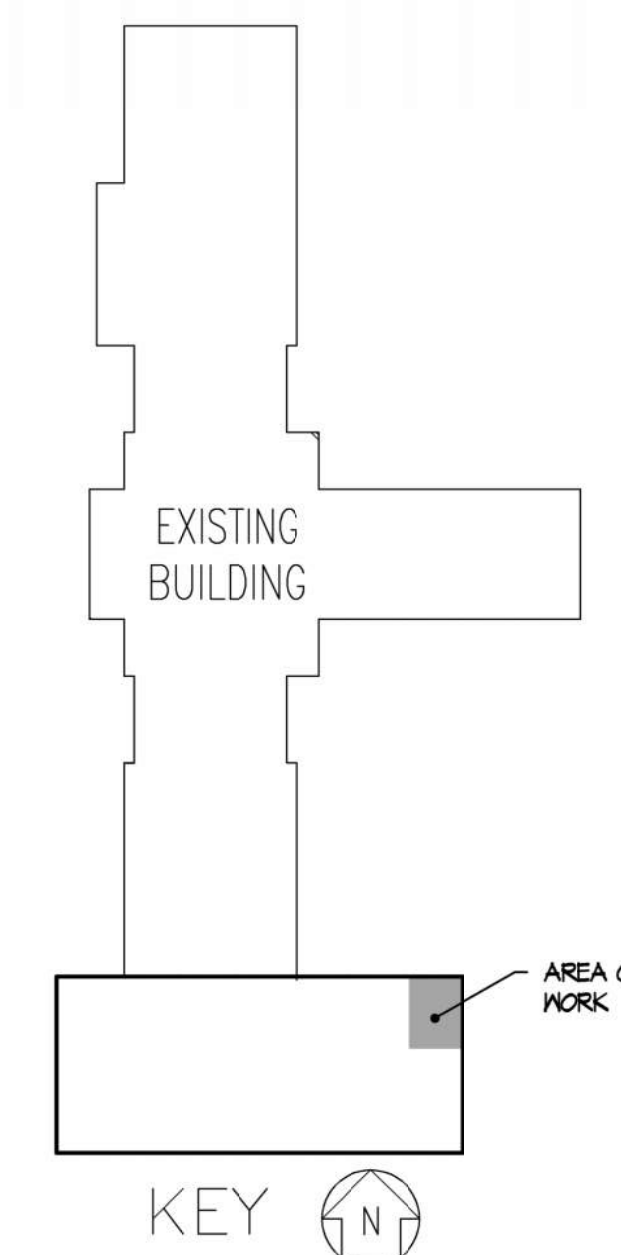
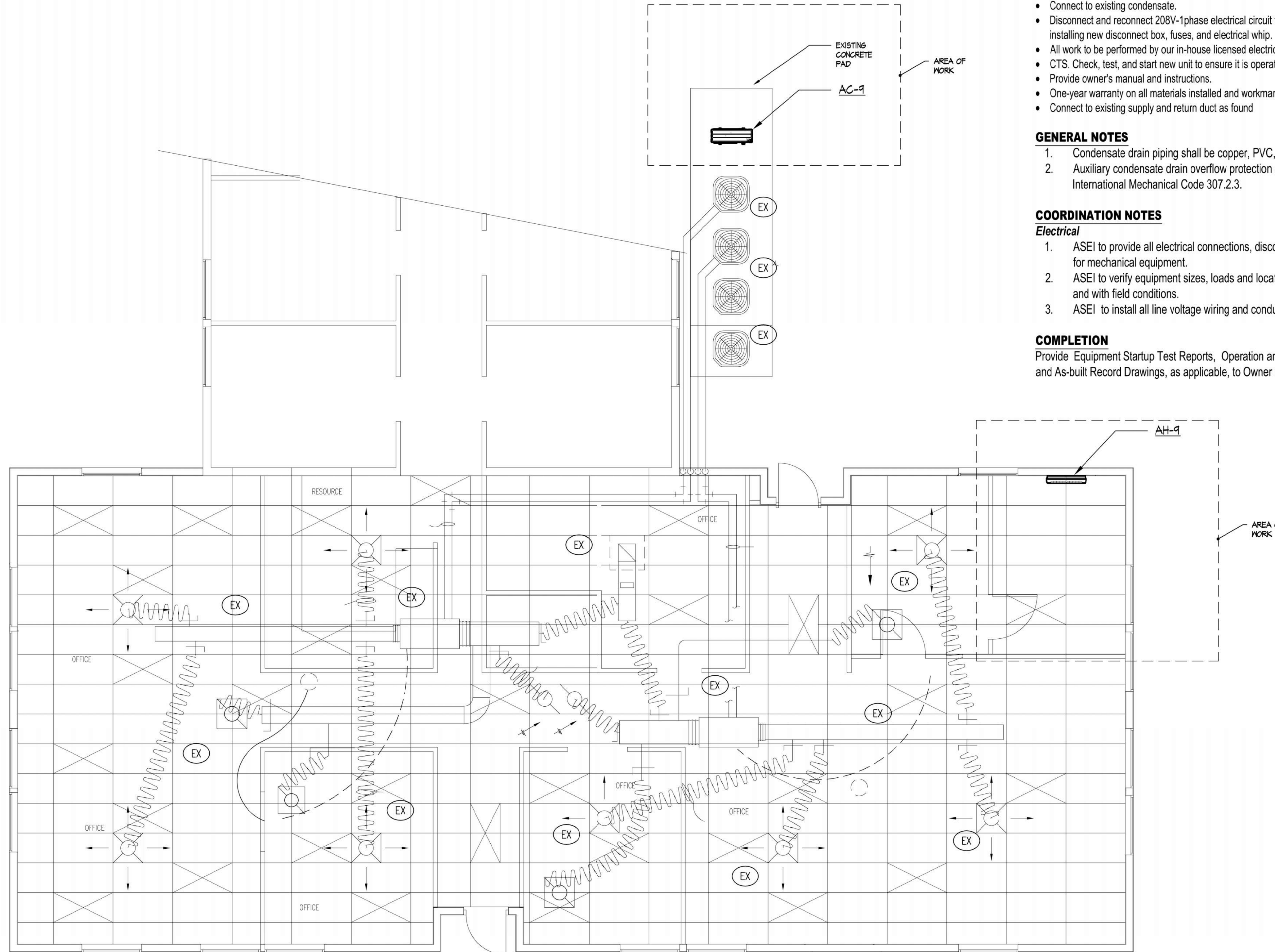
- Condensate drain piping shall be copper, PVC, or PEX.
- Auxiliary condensate drain overflow protection shall be provided per 2018 International Mechanical Code 307.2.3.

COORDINATION NOTES

- Electrical**
- ASEI to provide all electrical connections, disconnects, and motor starters for mechanical equipment.
 - ASEI to verify equipment sizes, loads and locations with mechanical plan and with field conditions.
 - ASEI to install all line voltage wiring and conduit.

COMPLETION

Provide Equipment Startup Test Reports, Operation and Maintenance Manuals, and As-built Record Drawings, as applicable, to Owner upon Project Completion.



MAIN FLOOR PLAN - SOUTH WING

scale 1/4" = 1'-0"

KEY NOTES

EX EXISTING EQUIPMENT, DUCT, AND DIFFUSERS TO REMAIN AS FOUND

REVISIONS	CHANGE
DATE	
DESIGN BSR	APPROVED
DATE	8-18-23

Absher Construction South Wing Server Room
 HVAC: SPLIT SYSTEM REPLACEMENT
 1001 Shaw Road
 Puyallup, WA 98372

Air Systems Engineering Inc.
 AIR CONDITIONING DESIGN & INSTALLATION
 (253) 572-9884
 3602 SOUTH PINE/FAVORITE, WA 98469
COMFORT SYSTEMS USA
 AIR CONDITIONING/SHEET METAL/REFRIGERATION/PROFESSIONAL ENGINEERS/SERVICE & MAINTENANCE

SHEET NO. **M-1** OF **1**
 JOB NO. **513167**

Parcel #: 0420355026