

REVISIONS

NO.	DATE	DESCRIPTION
1	8-10-2023	FOR APPROVAL
2		
3		
4		
5		
6		



DRAWN BY: BN

WSFP PROJECT NUMBER: KG3696

PRINT DATE: 8-10-23

SYMBOL LEGEND

- INDICATES A HANGER
- INDICATES GROOVED COUPLING
- INDICATES HYDRAULIC NODE TAG
- INDICATES ELEVATION (CENTERLINE)
- INDICATES 4-WAY SEISMIC BRACE
- INDICATES LATERAL / LONGITUDINAL BRACE
- INDICATES HANGER AND LINE RESTRAINT
- INDICATES FLEX HOSE
- INDICATES ADDED SPRINKLER
- INDICATES RELOCATED SPRINKLER
- INDICATES PLUGGED SPRINKLER
- Ø 2 1/2" X 1 1/4" - INDICATES MECHANICAL TEE
- INDICATES PIPE TO BE DEMOLISHED
- FWH - INDICATES FULL HEIGHT WALL

FIRE SPRINKLER PLAN - MULTICARE GSMOB SUITE 4500 CLINIC T.I.

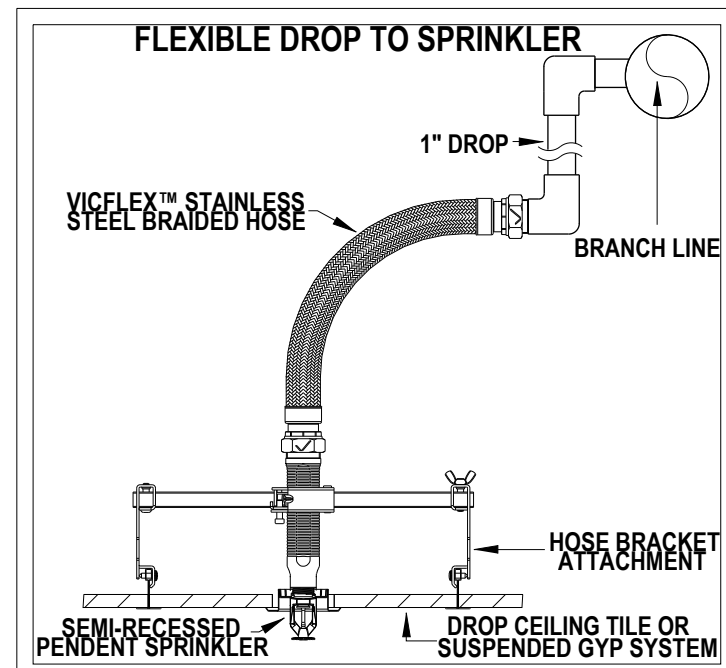
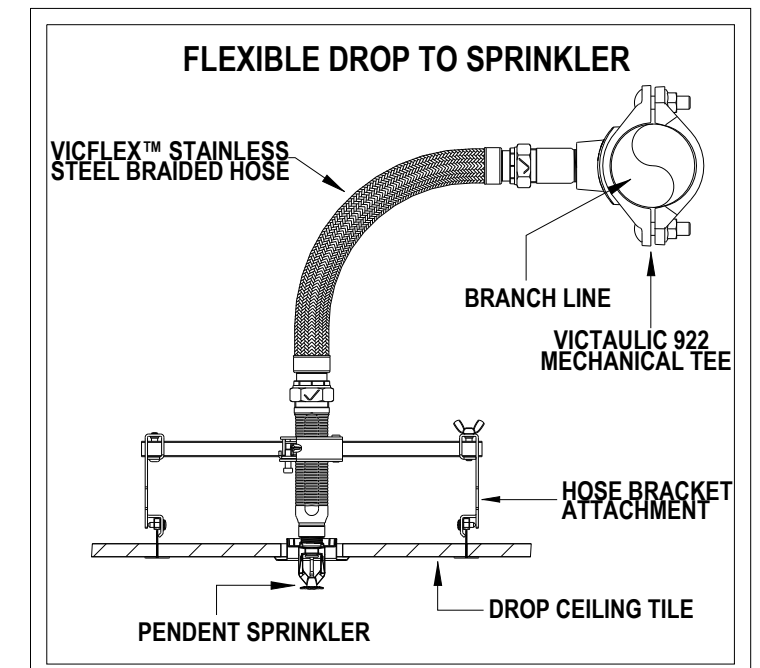
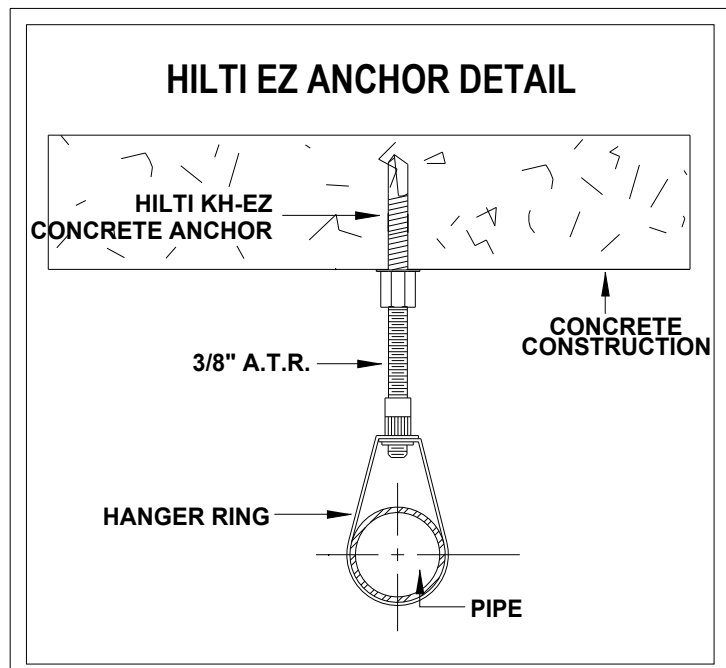
FOR REFERENCE ONLY



1/4" = 1'-0"

Sprinkler Legend - Total

Symbol	SIN	Model	Quantity	K-Factor	Type	Size	Response	Finish	Temp	Note
R	N/A	N/A	35	5.6	Pendent	1/2"	Quick	Chrome	155 °F	EXISTING
R	RA1414	F1FR56	9	5.6	Pendent	1/2"	Quick	Chrome	155 °F	RELOCATE
A	RA1414	F1FR56	1	5.6	Pendent	1/2"	Quick	Chrome	155 °F	ADD
			Total = 45							



City of Puyallup Fire Reviewed for Compliance

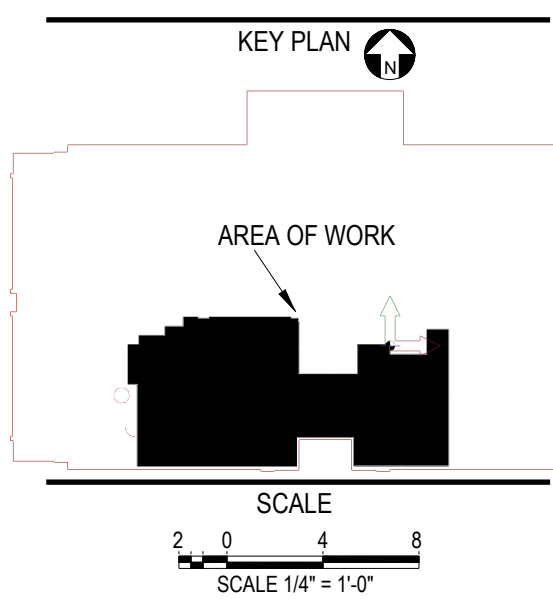
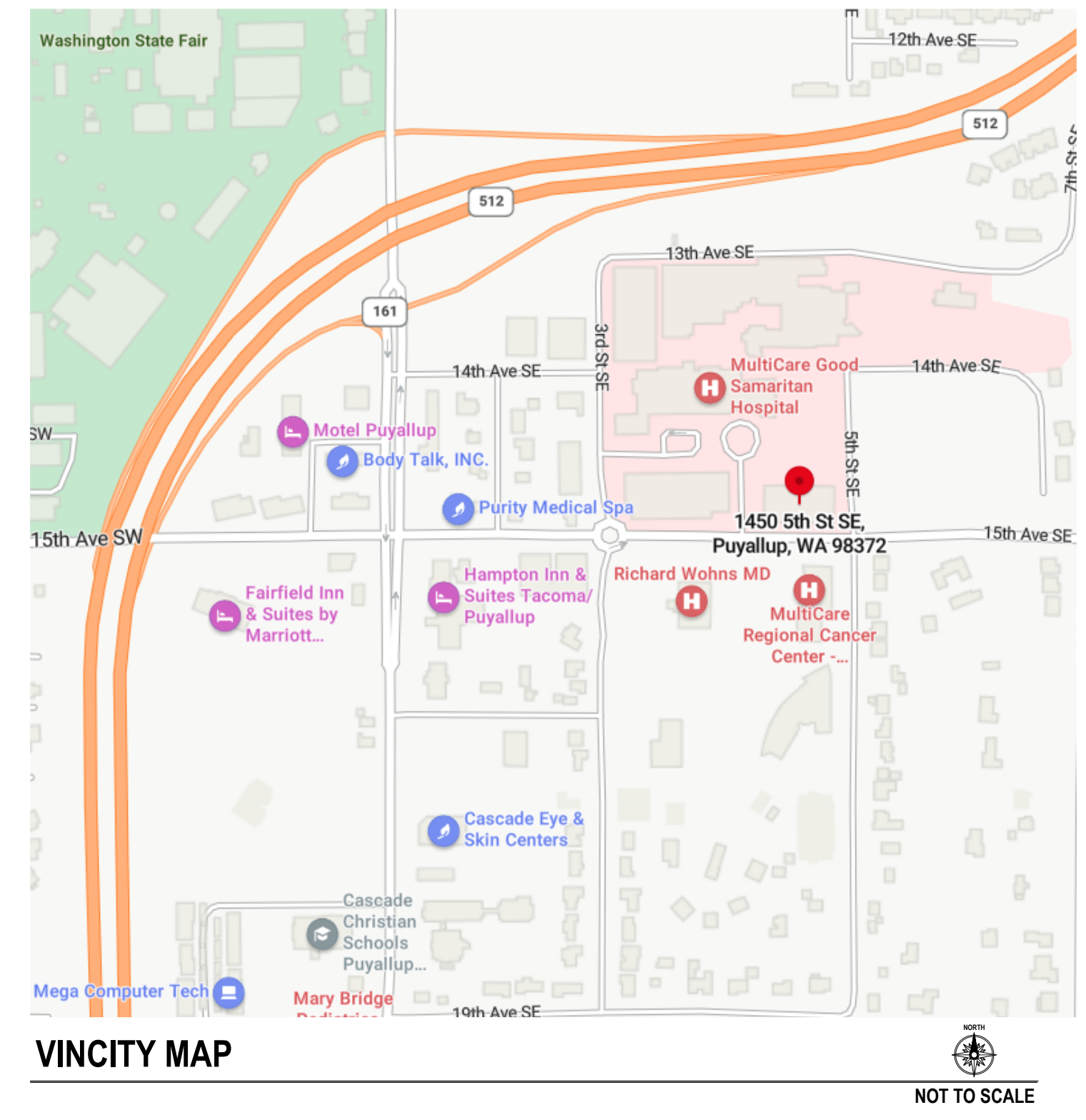
DDrake
 09/18/2023
 9:31:45 AM

THE APPROVED CONSTRUCTION PLANS AND ALL ENGINEERING MUST BE POSTED ON THE JOB AT ALL INSPECTIONS IN A VISIBLE AND READILY ACCESSIBLE LOCATION.

Approval of submitted plans is not an approval of omissions or oversight by this office or noncompliance with any applicable regulations of local government. The contractor is responsible for making sure that the building complies with all applicable building codes and regulations of the local government.

City of Puyallup Development & Permitting Services ISSUED PERMIT

Building	Planning
Engineering	Public Works
Fire	Traffic



PERMIT DOCUMENTS

PROJECT: **MULTICARE GSMOB SUITE 4500 CLINIC**

1450 5TH ST SE
 PUYALLUP, WA 98372

SHEET DESCRIPTION: **SUITE 1440 FIRE PROTECTION**

FP-101