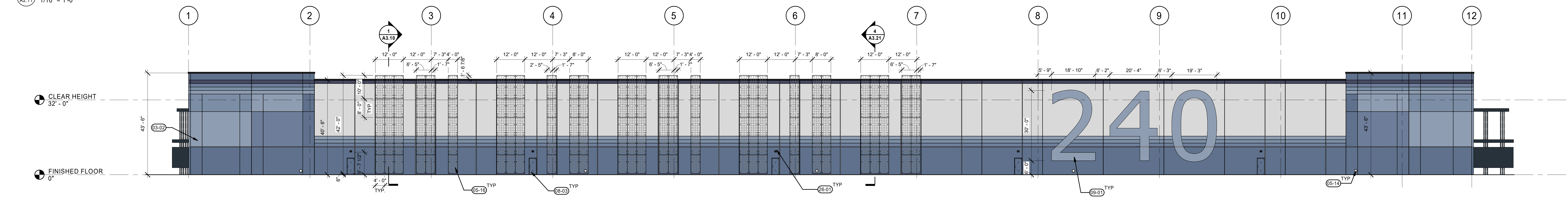
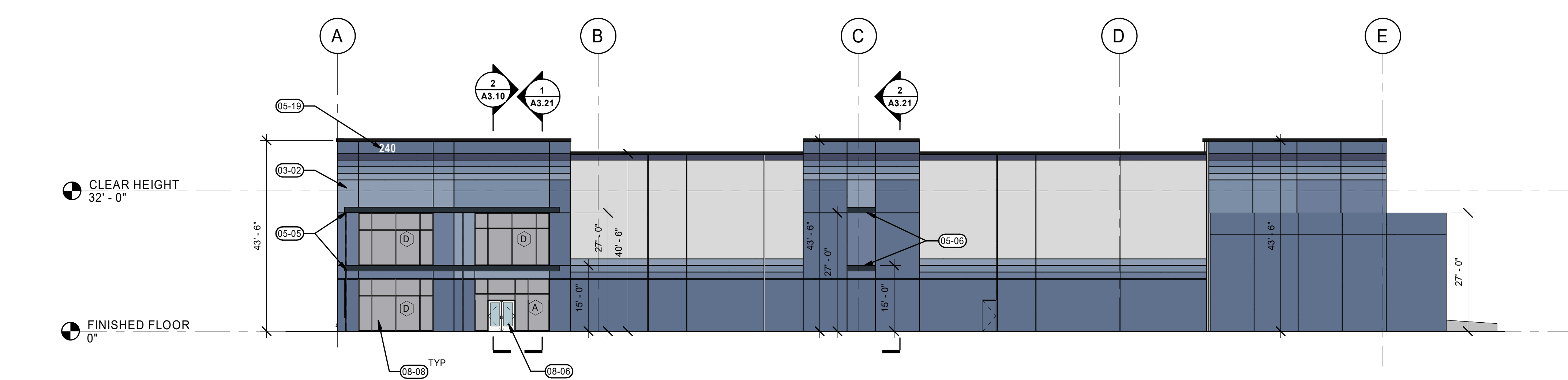


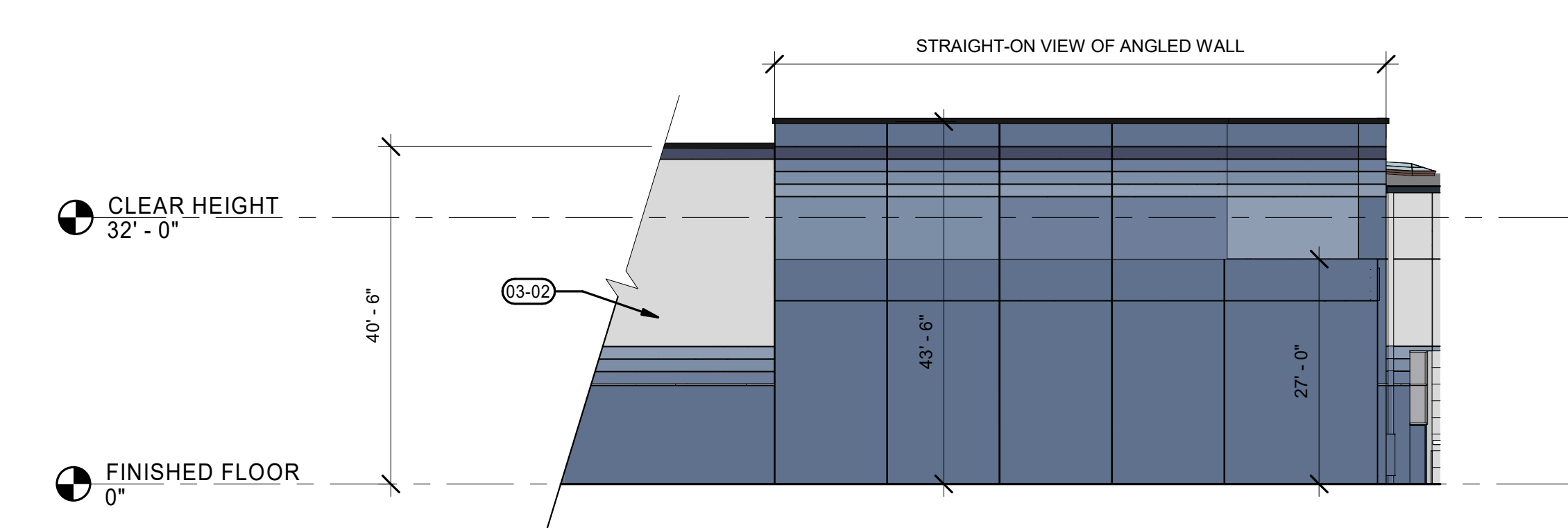
1 NORTH ELEVATION
A2.11 1/16" = 1'-0"



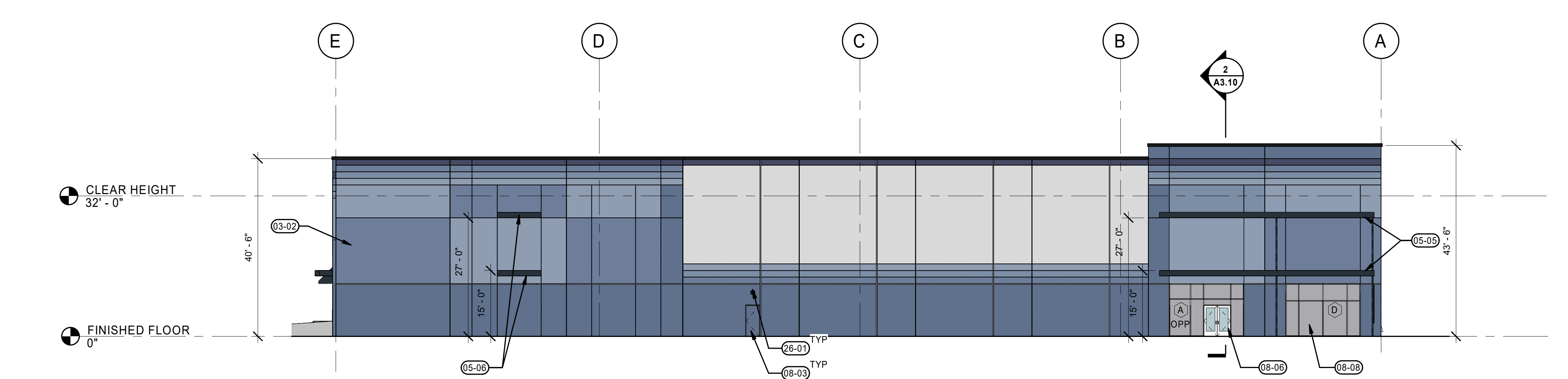
2 SOUTH ELEVATION
A2.11 1/16" = 1'-0"



3 EAST ELEVATION
A2.11 1/16" = 1'-0"



4 NORTHEAST ELEVATION
A2.11 1/16" = 1'-0"



5 WEST ELEVATION
A2.11 1/16" = 1'-0"

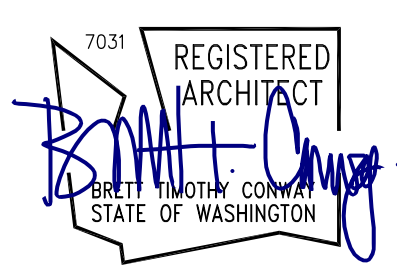
KEYNOTES

- 03-02 TILT-UP CONCRETE WALL. SEE STRUCTURAL. NO PAINT ON INTERIOR WALL.
- 03-03 BOLLARD. SEE DETAIL 15A5.13.
- 03-04 STEEL ACCESS STAIR, BY DESIGN BUILD.
- 03-05 METAL CANOPY. SEE SHEET DETAILS 9, 15, 18, & 19 ON SHEET A5.10.
- 03-06 METAL ACCENT DETAIL, PROJECTING FROM WALL. SEE DETAILS 9, 13, & 18 ON SHEET A5.10.
- 03-07 METAL COPING. SEE DETAIL 14A.18.
- 03-08 BOLDER DESIGN DOCK DOOR CANOPY. SEE DETAILS 14, 15, & 18 ON SHEET A5.14.
- 05-11 SHEET METAL GUTTER, PAINT. SEE DETAIL 3A5.16.
- 05-13 DOWNSPOUT GUARD, PAINT TO MATCH BUILDING BEHIND. SEE DETAIL 7A5.14.
- 05-14 DOWNSPOUT OVERFLOW. SEE DETAIL 11A5.16.
- 05-16 TRELIS PANEL SYSTEM. SEE DETAIL 16A5.13.
- 05-19 FIRE DEPARTMENT BUILDING ADDRESS. 24" TALL AND 1/2" THICK METAL LETTERS. COLOR WHITE.
- 08-01 INSULATED OVERHEAD DOOR. PAINT TO MATCH BUILDING. SEE DOOR TYPES ON A6.19 FOR ADDITIONAL INFO.
- 08-02 INSULATED OVERHEAD DRIVE-IN DOOR. PAINT TO MATCH. SEE DOOR TYPES ON A6.10 FOR ADDITIONAL INFO.
- 08-03 INSULATED HM DOOR. SEE DOOR TYPES ON A6.10 FOR ADDITIONAL INFO.
- 08-06 STOREFRONT ENTRY.
- 08-07 CLERESTORY GLAZING.
- 08-08 CLEAR ANODIZED ALUMINUM STOREFRONT SYSTEM.
- 09-01 BUILDING ADDRESS, PAINTED P-TBD.
- 11-01 DOCK DOOR BUMPER.
- 26-01 WALL MOUNTED EGRESS LIGHT BY ELECTRICAL.

PAINT LEGEND

- PAINT - PT1
SW 6523 WINDCHILL
- PAINT - PT2
SW 7619 DENIM
- PAINT - PT3
SW 7619 LABRADORITE
- PAINT - PT4
SW 6522 SPORTY BLUE
- PAINT - PT5
SW 9151 DAPHNE
- PAINT - PT6
SW 9176 DRESS BLUES
- PAINT - PT
SW 9179 ANCHORS AWEIGH

NOTE:
EXTERIOR WALL PAINT: LOXON XP OR ALTERNATE (ELASTOMERIC)



MACKENZIE
2023 ALL RIGHTS RESERVED
THESE DRAWINGS ARE THE PROPERTY OF
MACKENZIE AND ARE NOT TO BE USED
OR REPRODUCED IN ANY MANNER
WITHOUT PRIOR WRITTEN PERMISSION.

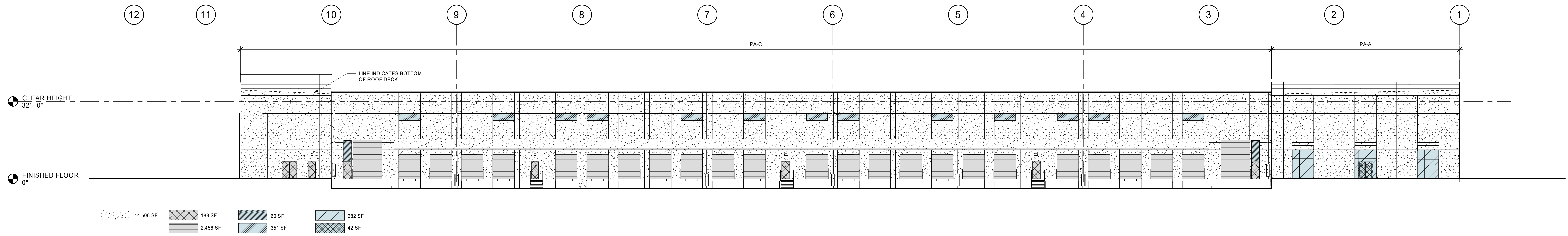
| REVISION SCHEDULE | | |
|-------------------|-----------|------------|
| Date | Issued As | Issue Date |
| | | |
| | | |
| | | |
| | | |
| | | |

SHEET TITLE:
BUILDING ELEVATIONS

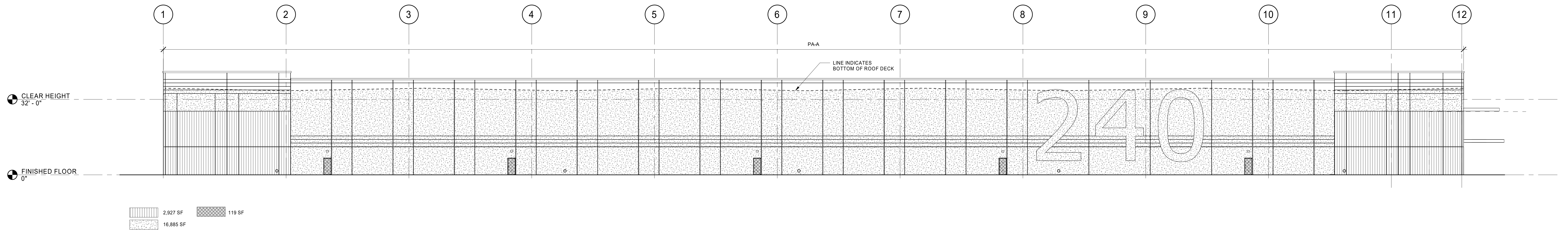
SHEET

A2.11

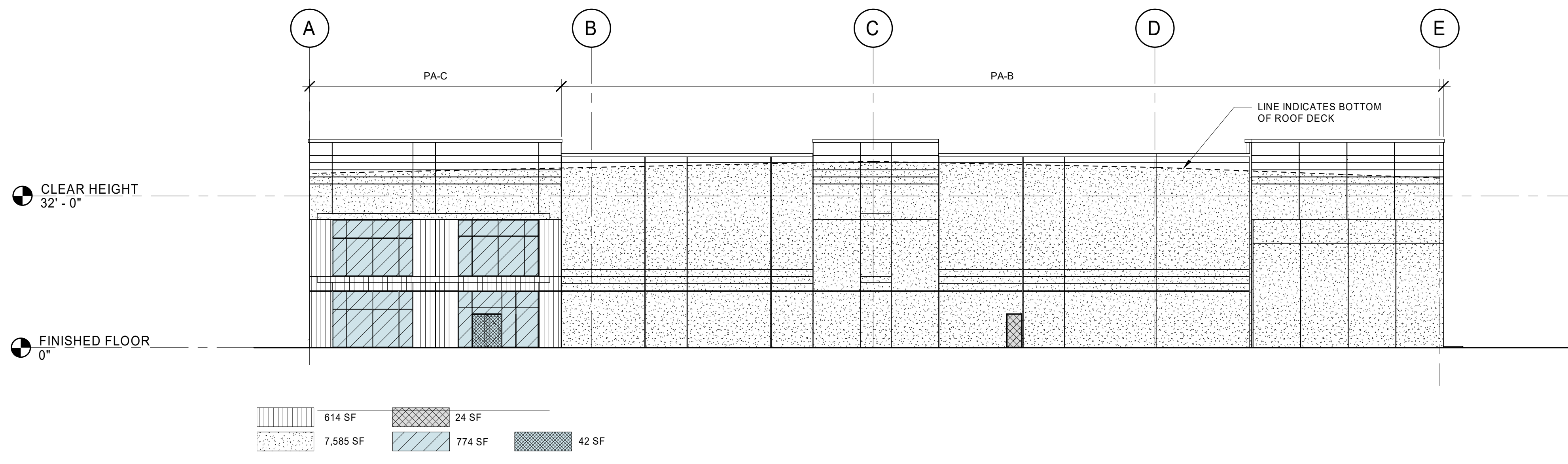
JOB NO. 2220290.00



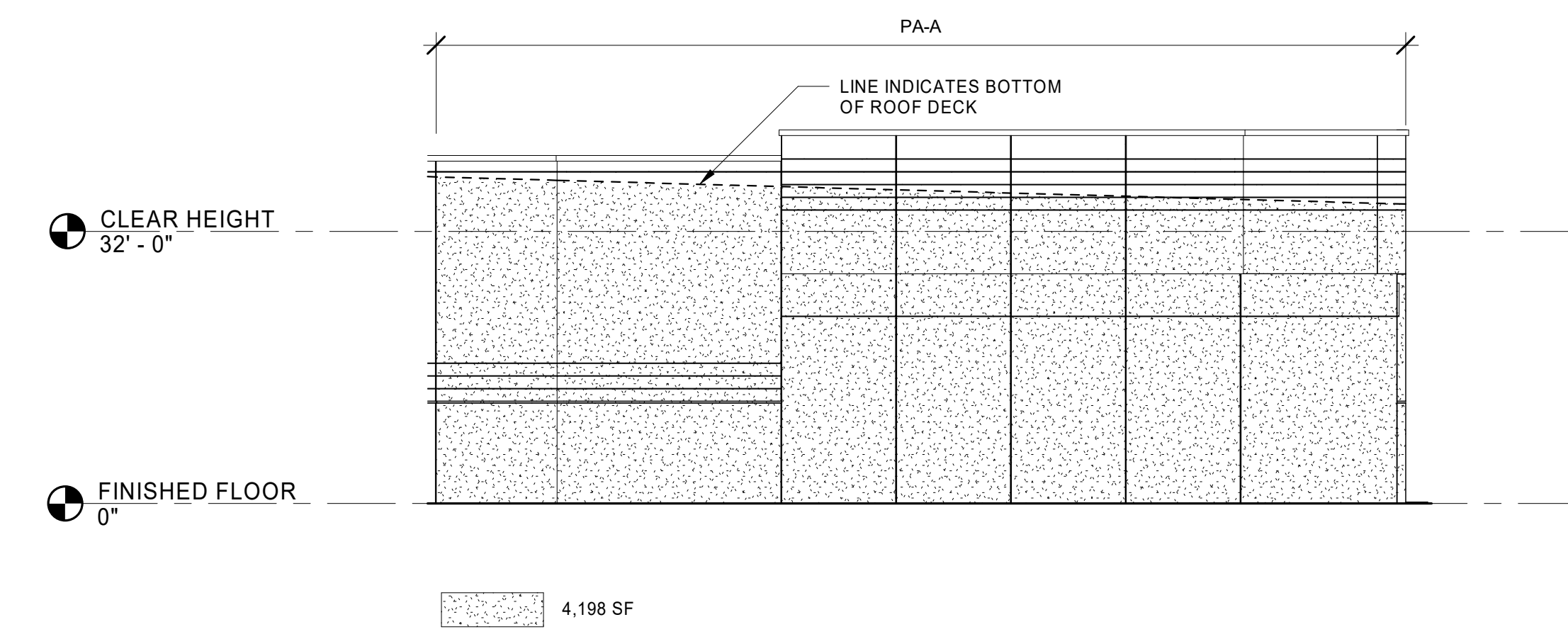
1 NORTH ELEVATION
1/16" = 1'-0"



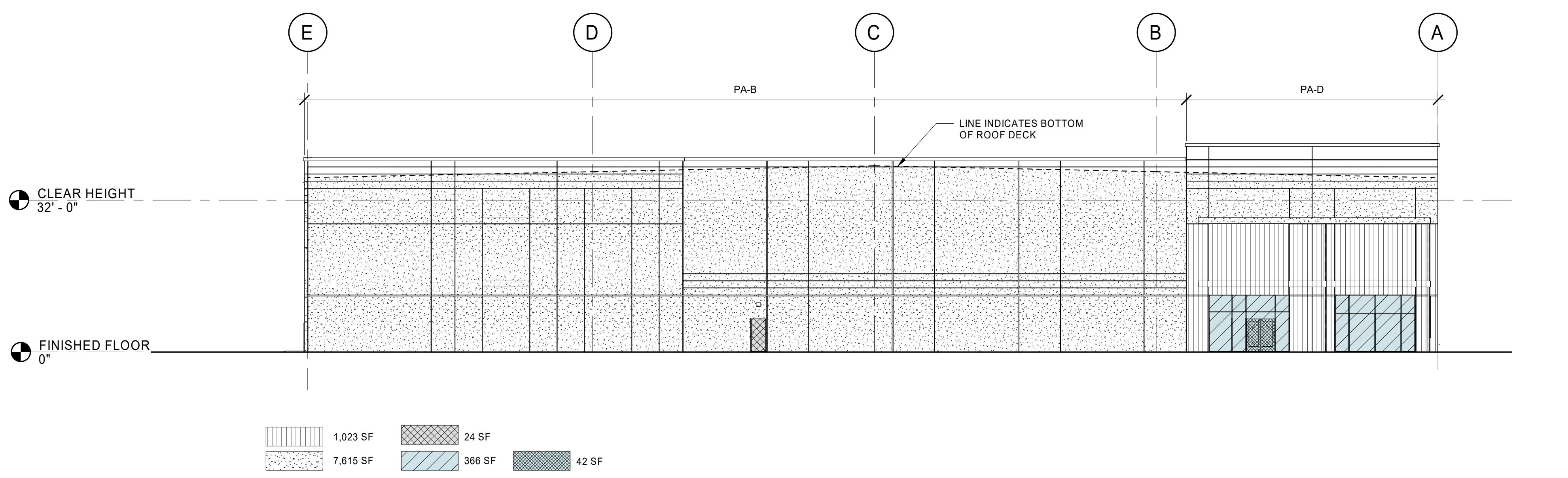
2 SOUTH ELEVATION
1/16" = 1'-0"



3 EAST ELEVATION
1/16" = 1'-0"



4 NORTHEAST ELEVATION
1/16" = 1'-0"



5 WEST ELEVATION
1/16" = 1'-0"

GENERAL NOTES

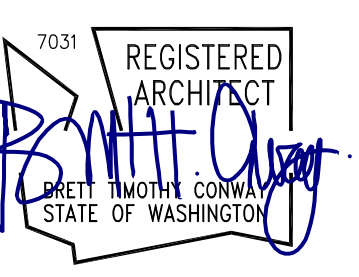
- A. SEE STRUCTURAL DRAWINGS FOR PANEL THICKNESS
 - B. WALL INSULATION TO BE INSTALLED AS PART OF FUTURE TENANT IMPROVEMENT, SHOWN FOR CODE COMPLIANCE ONLY
 - PA-A 8" PANEL - SEE STRUCTURAL DRAWINGS
 - PA-B 8-3/4" PANEL - SEE STRUCTURAL DRAWINGS
 - PA-C 9-1/2" PANEL - SEE STRUCTURAL DRAWINGS
 - PA-D 10" PANEL - SEE STRUCTURAL DRAWINGS
- NOTE: THIS PROJECT IS A SEMI-HEATED BUILDING WITHOUT ELECTRIC RESISTANCE HEATING. THEREFORE THE FOLLOWING WA STATE ENERGY CODE PROVISION APPLIES: SECTION 402.1.2 - SEMI-HEATED SPACES HEATED BY MECHANICAL SYSTEMS THAT DO NOT INCLUDE ELECTRIC RESISTANCE HEATING EQUIPMENT ARE NOT REQUIRED TO COMPLY WITH THE OPAQUE WALL INSULATION PROVISIONS OF SECTION C402.2.3 FOR WALL THAT SEPARATE SEMI-HEATED SPACES FROM THE EXTERIOR OR LOW ENERGY SPACES.

BASE AND ADJUSTED "U" VALUES

| | |
|---|---|
| OVERHEAD DOOR: | U=0.25 |
| HW DOOR: | U=0.37 MAX |
| GLASS: | BASE U=0.29 SHGC=0.31 |
| | INSULATED SOLAR GREY W/ SOLARBAN 60 LOW E |
| ADJUSTED U (REDUCED FOR "ASSEMBLY VALUE") | |
| GLASS AT STOREFRONT (61% GLASS) | U=0.38 MAX SHGC=0.295 |
| GLASS AT TRANSOM (83.3% GLASS) | U=0.38 MAX SHGC=0.27 |
| GLASS SF DOOR (69% GLASS) | U=0.60 MAX SHGC=0.24 |

LEGEND

| | |
|--|-----------|
| CONCRETE WALL | 46,591 SF |
| CONCRETE WALL WITH METAL STUD FURRING & BATT INSULATION U=0.055 (R-13) | 4,664 SF |
| HOLLOW METAL DOORS U=0.37 | 356 SF |
| INSULATED OVERHEAD DOORS U=0.25 | 2,456 SF |
| STOREFRONT GLAZING U=0.38 | 1,422 SF |
| CLERESTORY WINDOWS U=0.29 | 351 SF |
| TRANSOM WINDOWS U=0.38 | 605 SF |
| STOREFRONT DOORS U=0.60 | 128 SF |



MACKENZIE
2023 ALL RIGHTS RESERVED
THESE DRAWINGS ARE THE PROPERTY OF MACKENZIE AND ARE NOT TO BE USED OR REPRODUCED IN ANY MANNER WITHOUT PRIOR WRITTEN PERMISSION.

| REVISION SCHEDULE | | |
|-------------------|-----------|------------|
| Delta | Issued As | Issue Date |
| | | |
| | | |
| | | |
| | | |

SHEET TITLE:
BUILDING INSULATION ELEVATIONS

SHEET

A2.12

JOB NO. 2220290.00