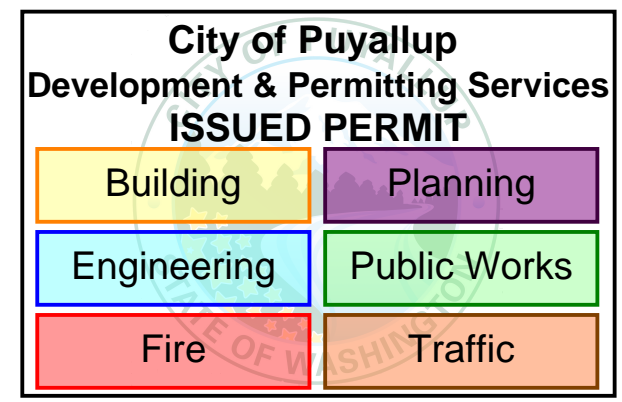


THE APPROVED CONSTRUCTION PLANS AND ALL ENGINEERING MUST BE POSTED ON THE JOB AT ALL INSPECTIONS IN A VISIBLE AND READILY ACCESSIBLE LOCATION.

Approval of submitted plans is not an approval of omissions or oversight by this office or noncompliance with any applicable regulations of local government. The contractor is responsible for making sure that the building complies with all applicable building codes and regulations of the local government.



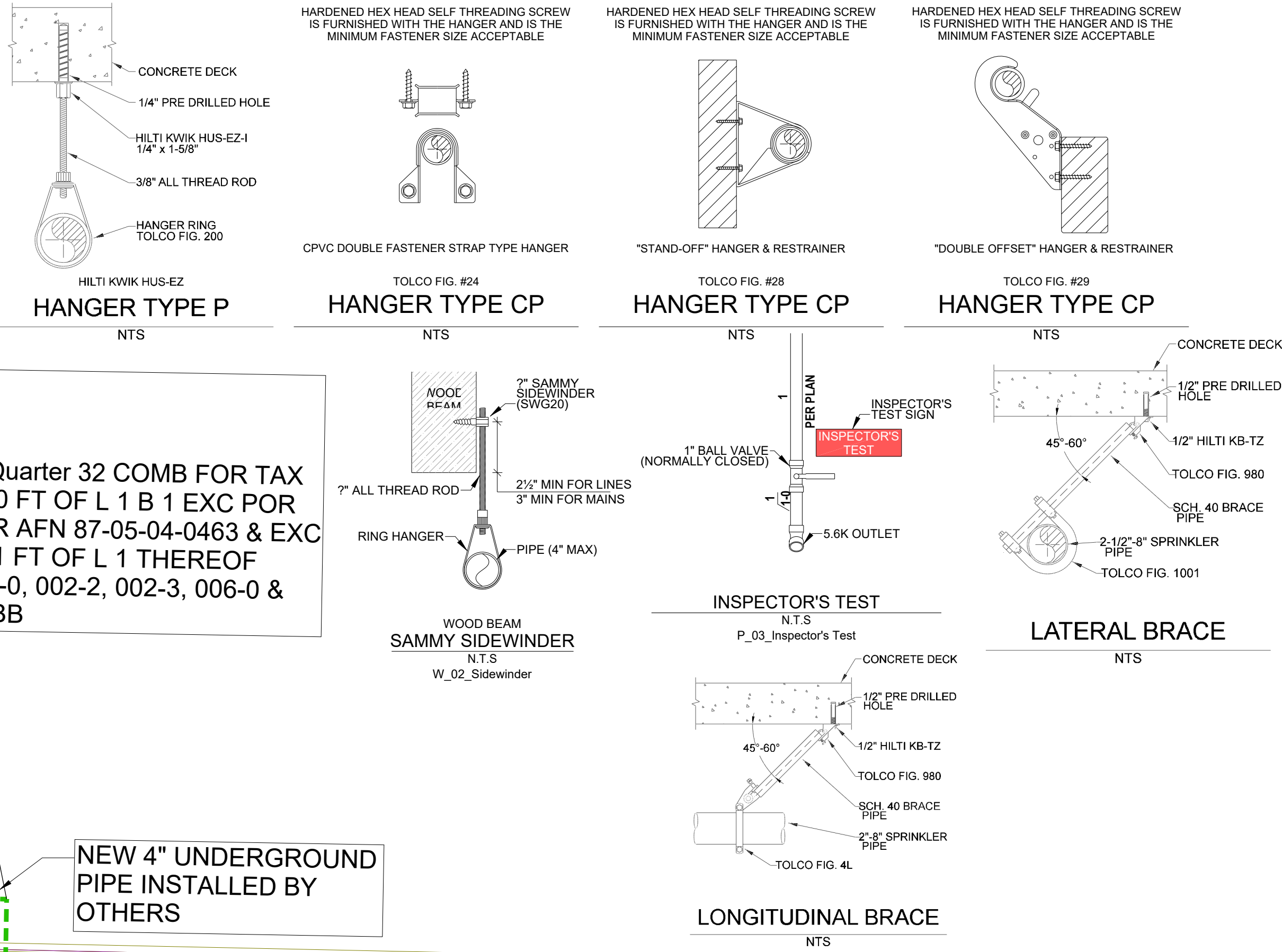
CITY OF PUYALLUP APPROVED FIRE HYDRANT REPORT
 STATIC PSI: 108
 GPM: 1950
 RESIDUAL PSI: 20

FDC IN FIELD 10' FROM HYDRANT INSTALLED BY OTHERS

LEGAL DESCRIPTION:
 PARCEL NO: 7790000024
 Section 34 Township 20 Range 04 Quarter 32 COMB FOR TAX PURPOSES ONLY DESC AS W 270 FT OF L 1 B 1 EXC POR CYD TO CY OF PUYALLUP UNDER AFN 87-05-04-0463 & EXC E 67.5 FT OF W 202.5 FT OF N 141 FT OF L 1 THEREOF EASE OF RECORD COMB OF 001-0, 002-2, 002-3, 006-0 & 007-0 SEG 2013-0084 BB 9/21/12 BB

HAMPTON INN- PUYALLUP

1515 Meridian St
 Puyallup, WA 98371

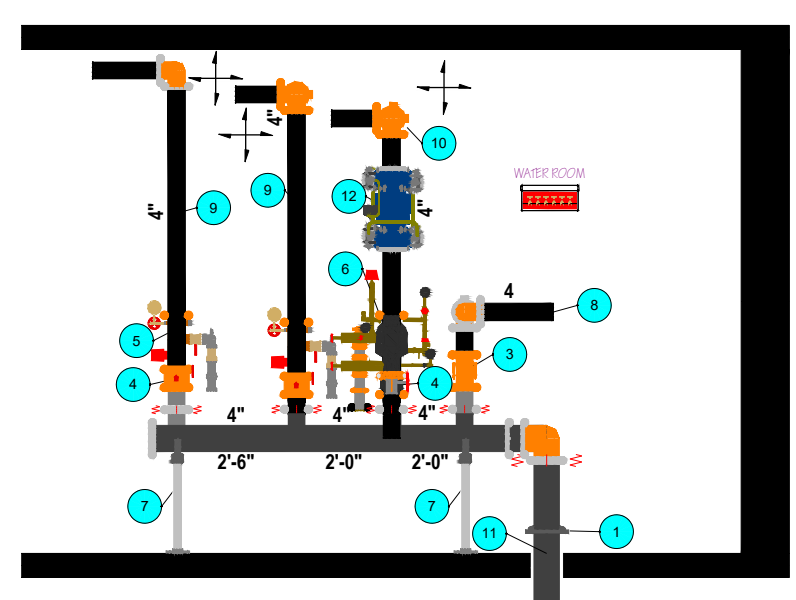
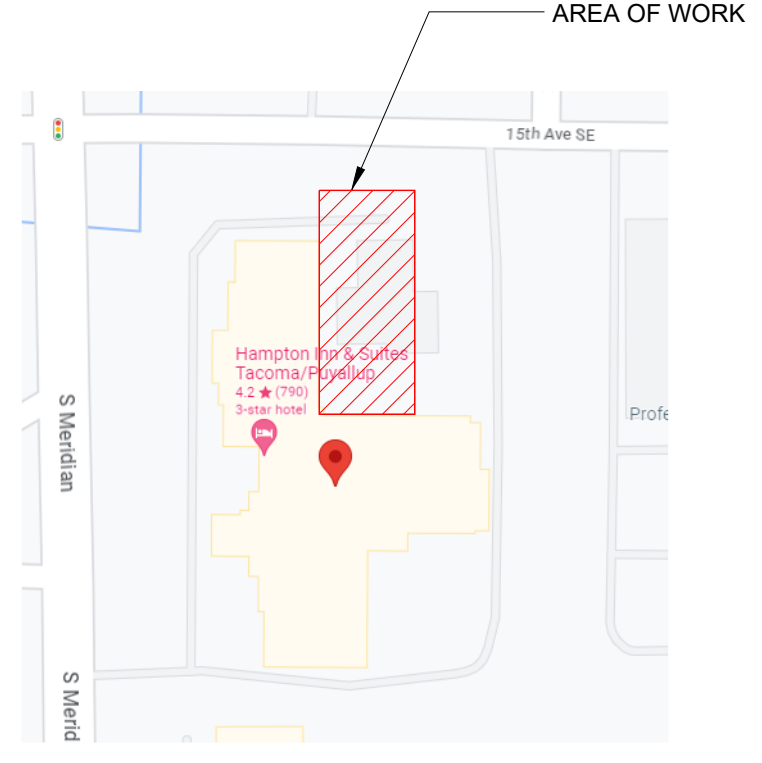


SCOPE OF WORK:
 ADD SPRINKLERS IN ACCORDANCE WITH NEW ADDITION TO HAMPTON INN

GENERAL NOTES:
 1. ALL MATERIAL AND EQUIPMENT TO BE NEW AND UL AND/OR FM APPROVED.
 2. PIPING DIMENSIONS ARE CUT LENGTH.
 3. PIPE HANGERS AND METHOD OF HANGING TO BE IN ACCORDANCE WITH NFPA #13 (2019).
 4. PIPING SHALL BE IN ACCORDANCE WITH NFPA #13 (2019).
 5. JOINING OF PIPE AND FITTINGS, THREADED AND WELDED, SHALL BE IN ACCORDANCE WITH NFPA #13 (2019).
 6. OWNER TO PROVIDE ADEQUATE HEAT TO PREVENT WATER IN PIPES FROM FREEZING IN AREAS PROTECTED BY A WET PIPE SPRINKLER SYSTEM.
 7. STRUCTURAL ADEQUACY OF THE BUILDING TO SUPPORT THE SPRINKLER PIPING IS THE RESPONSIBILITY OF THE OWNER AND/OR HIS STRUCTURAL REPRESENTATIVE.
 8. ALL FIRE ALARMS, WIRING AND MONITORING ARE TO BE INSTALLED BY OTHERS.

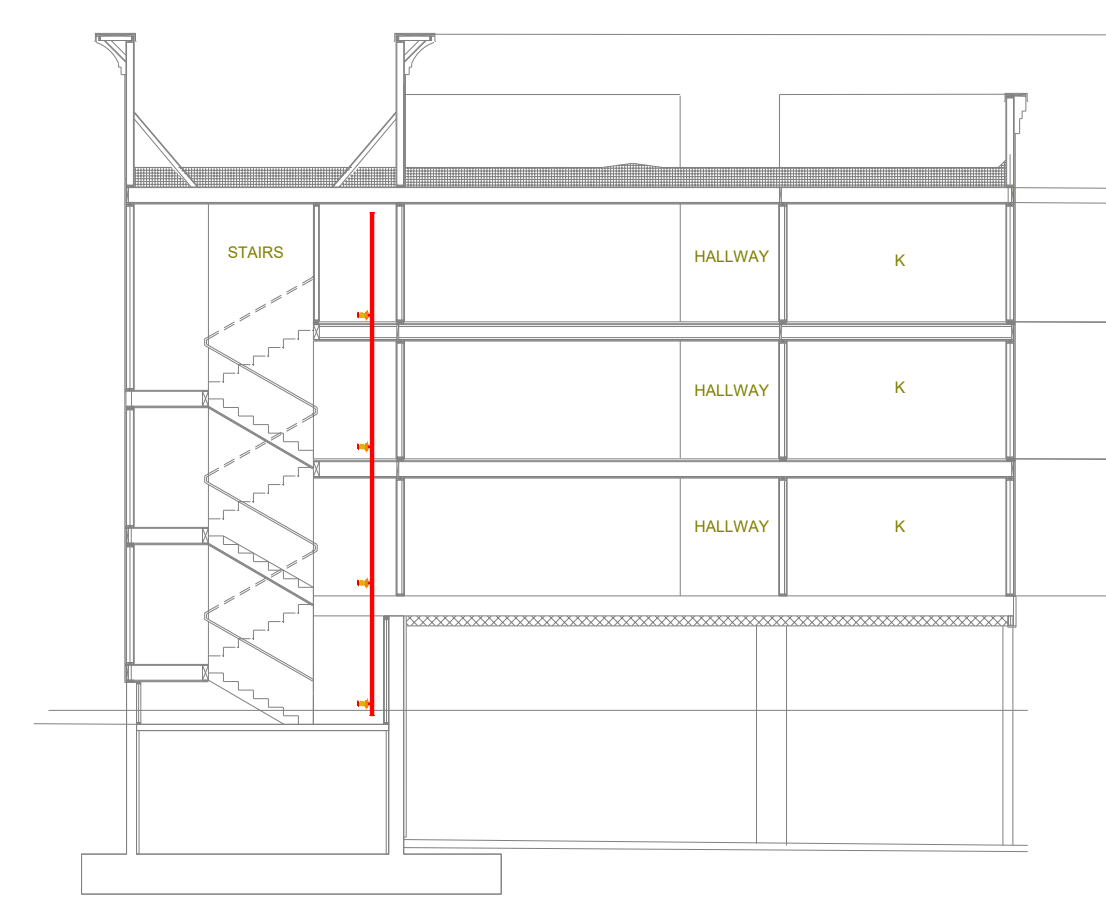
DESIGN NOTES:
 1. DESIGN AND SPRINKLER SPACING PER NFPA #13 (LIGHT HAZARD IN HALLWAYS, ORDINARY HAZARD I IN GARAGE).
 2. PLAN SUBMITTAL TO AND APPROVAL BY .
 3. MATERIALS PER NFPA #13 STANDARDS AS SELECTED BY FSI.
 4. TESTING PER NFPA #13 AND CITY OF PUYALLUP.

FIELD NOTES:
 1. ALL NEW PIPING TO BE BLACK, SCHEDULE 40 WITH BLACK, DUCTILE IRON THREADED FITTINGS, OR BLACK, DYNA FLOW, WITH ARGO GROOVED FITTINGS, OR BLAZEMASTER CPVC IN RESIDENTIAL AREAS.
 2. SPRINKLERS IN ACT TYPE CEILINGS TO BE INSTALLED ON 1" X 1/2" FLEXIBLE HOSE CONNECTIONS.
 3. ARMOVERS SUPPLYING UPRIGHTS LONGER THAN 2'-0" SHALL HAVE A HANGER.
 4. ARMOVERS SUPPLYING PENDANTS LONGER THAN 1'-0" SHALL HAVE A HANGER.
 5. TYPICAL HANGER TO BE TOLCO FIG. 24, 28M, AND 29 (UNLESS NOTED OTHERWISE).
 6. MAX SQ FT PER SPRINKLER = 225 SQ FT.



FIRE RISER LEGEND

| ITEM | SIZE | DESCRIPTION |
|------|------|------------------------------------|
| 1 | 4" | GRY FLANGE |
| 2 | 4" | GRY VIC CHECK VALVE |
| 3 | 4" | GRY VIC BUTTERFLY VALVE |
| 4 | 4" | GRY VIC RISER MANIFOLD |
| 5 | 4" | GRY VIC RISER VALVE |
| 6 | 4" | GRY VIC DRY PIPE VALVE |
| 7 | 2" | PIPE STAND (SEE DETAIL) |
| 8 | 4" | TO FDC (FLANGE IN FIRE RISER ROOM) |
| 9 | 4" | TO STANDPIPE / WET SYSTEM |
| 10 | 4" | TO DRY SYSTEM |
| 11 | 4" | WATER SUPPLY (BY OTHERS) |
| 12 | - | GENERAL RISER MOUNT AIR COMPRESSOR |



DRAWN BY: C. Streuli
REVIEWED BY: MPM
DATE: 8/28/2023
SCALE: AS NOTED
AHJ: CITY OF PUYALLUP

REVISIONS:

| REV# | DATE | BY | DESCRIPTION |
|------|------|----|-------------|
| | | | |

HYDRAULIC DESIGN INFO
 THIS SYSTEM IS HYDRAULICALLY DESIGNED - FLOW TEST -

| | |
|--------------|------------|
| STATIC: | 108 PSI |
| RESIDUAL: | 20 PSI |
| GPM FLOWING: | 1950 |
| DATE & TIME: | 01/01/2021 |

SPRINKLER LEGEND

| SYM | MFR | TYPE | RESP | TEMP | FINISH | ESC | QTY |
|-----|--------|--------|------|------|------------------|-----|-----|
| ● | VIKING | VK468 | FAST | 157 | 1/2" WHITE/WHITE | 187 | 12 |
| ● | VIKING | VK950 | QR | 200 | 1/2" BRASS | 12 | 12 |
| ○ | TYCO | TY3151 | SR | 200 | 1/2" BRASS | 200 | 61 |

TOTAL THIS JOB = 260

Puyallup Hampton Inn

1515 Meridian S
 Puyallup, WA 98371

CONTRACT WITH:
 Baldwin General Contracting
 1224 Santiam Rd SE
 Albany, OR 97321
 POC: Randy Patterson-541-979-1031

HANGER LEGEND:

| |
|------------------------------|
| CPVC HANGER |
| TOP BEAM CLAMP W/ STRAP |
| HILTI KH-EZ1 |
| SAMMY SUPER SCREW (SS20030) |
| SAMMY SIDEWINDER (SWDOR 516) |
| TRAPAZE |

DRAWING SYMBOLS:

| | |
|---|--------------|
| + | A.1 |
| + | #1 |
| — | 1/0 |
| + | X |
| + | ★ 10'-10FF & |

JOB NUMBER: 4807
SHEET NUMBER: FP1 of 5

SITE PLAN
 SCALE: 1/8" = 1'-0"





WA CL# FRESI-988RJ
 1524 45th Street East, Suite 102
 Sumner, WA 98390
 (253) 826-0099
 www.firesprinklersinc.com

DRAWN BY: C. Streuli
REVIEWED BY: MPM
DATE: 08/28/2023
SCALE: AS NOTED
AHJ: CITY OF PUYALLUP

REVISIONS:

| REV# | DATE | BY | DESCRIPTION |
|------|------|----|-------------|
| | | | |

HYDRAULIC DESIGN INFO
 THIS SYSTEM IS HYDRAULICALLY DESIGNED
 THIS SYSTEM IS NOT HYDRAULICALLY DESIGNED - FLOW TEST -
 STATIC: -
 RESIDUAL: -
 GPM FLOWING: -
 DATE & TIME: -

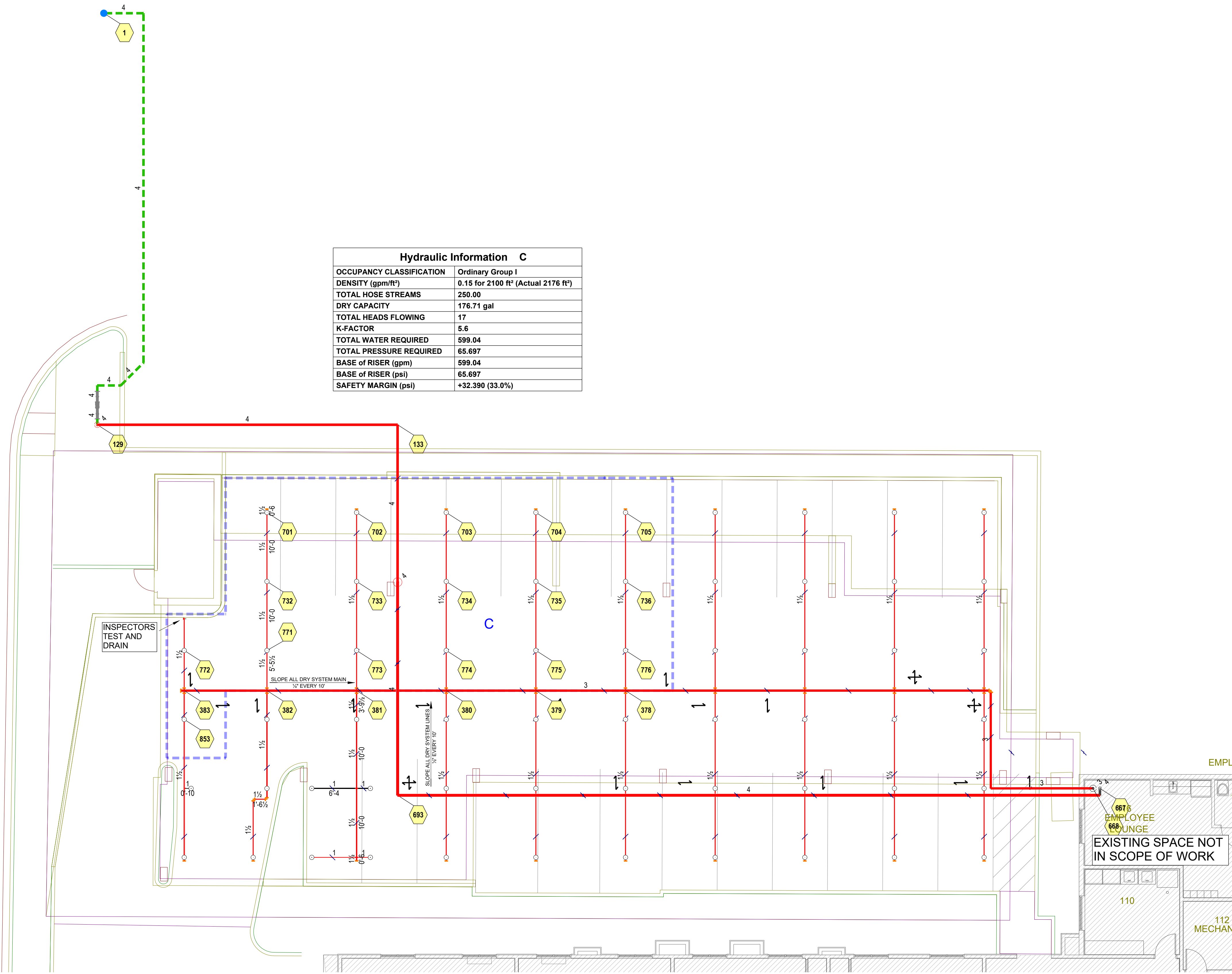
SPRINKLER LEGEND

| SYM | MFR | SIN | RESP | TYPE | K-FACTOR | TEMP | THRD | FINISH | ESC | QTY |
|-----|------|--------|------|---------|----------|------|------|--------|-----|-----|
| ○ | TYCO | TY3151 | SR | UPRIGHT | 5.6 | 200 | 1/2" | BRASS | 60 | 60 |

TOTAL THIS SHEET = 60

Hydraulic Information C

| | |
|--------------------------------|--|
| OCCUPANCY CLASSIFICATION | Ordinary Group I |
| DENSITY (gpm/ft ²) | 0.15 for 2100 ft ² (Actual 2176 ft ²) |
| TOTAL HOSE STREAMS | 250.00 |
| DRY CAPACITY | 176.71 gal |
| TOTAL HEADS FLOWING | 17 |
| K-FACTOR | 5.6 |
| TOTAL WATER REQUIRED | 599.04 |
| TOTAL PRESSURE REQUIRED | 65.697 |
| BASE of RISER (gpm) | 599.04 |
| BASE of RISER (psi) | 65.697 |
| SAFETY MARGIN (psi) | +32.390 (33.0%) |



FIRST FLOOR - PIPING PLAN

SCALE: 1/8" = 1'-0"

City of Puyallup
 Development & Permitting Services
ISSUED PERMIT

| | |
|-------------|--------------|
| Building | Planning |
| Engineering | Public Works |
| Fire | Traffic |

CERTIFICATE OF COMPETENCY
 WASHINGTON STATE
 FIRE PROTECTION SPRINKLER SYSTEMS
 Michael Paul Moffett
 4513-0612-C Level 3
 Fire Sprinklers Incorporated
 FRESI-988RJ

CONTRACT WITH:
 Baldwin General Contracting
 1224 Santiam Rd SE
 Albany, OR 97321
 POC: Randy Patterson-541-979-1031

HANGER LEGEND:

| | |
|-----------------------------|--|
| CPVC HANGER | |
| TOP BEAM CLAMP W/ STRAP | |
| HILTI KH-EZ1 | |
| SAMMY SUPER SCREW (SS2030) | |
| SAMMY SIDEWINDER (SWOR 516) | |
| TRAPEZE | |

DRAWING SYMBOLS:

| | |
|---|---------------|
| + | A.1 |
| + | #1 |
| + | 1/0 |
| + | X |
| + | ★ 10'-10"FF & |

JOB NUMBER: 4807
SHEET NUMBER: FP2 OF 5



WA CL# FRESI-988RJ
 1524 45th Street East, Suite 102
 Sumner, WA 98390
 (253) 826-0099
 www.firesprinklersinc.com

DRAWN BY: C. Streuli
REVIEWED BY: MPM
DATE: 08/28/2023
SCALE: AS NOTED
AHJ: CITY OF PUYALLUP

REVISIONS:

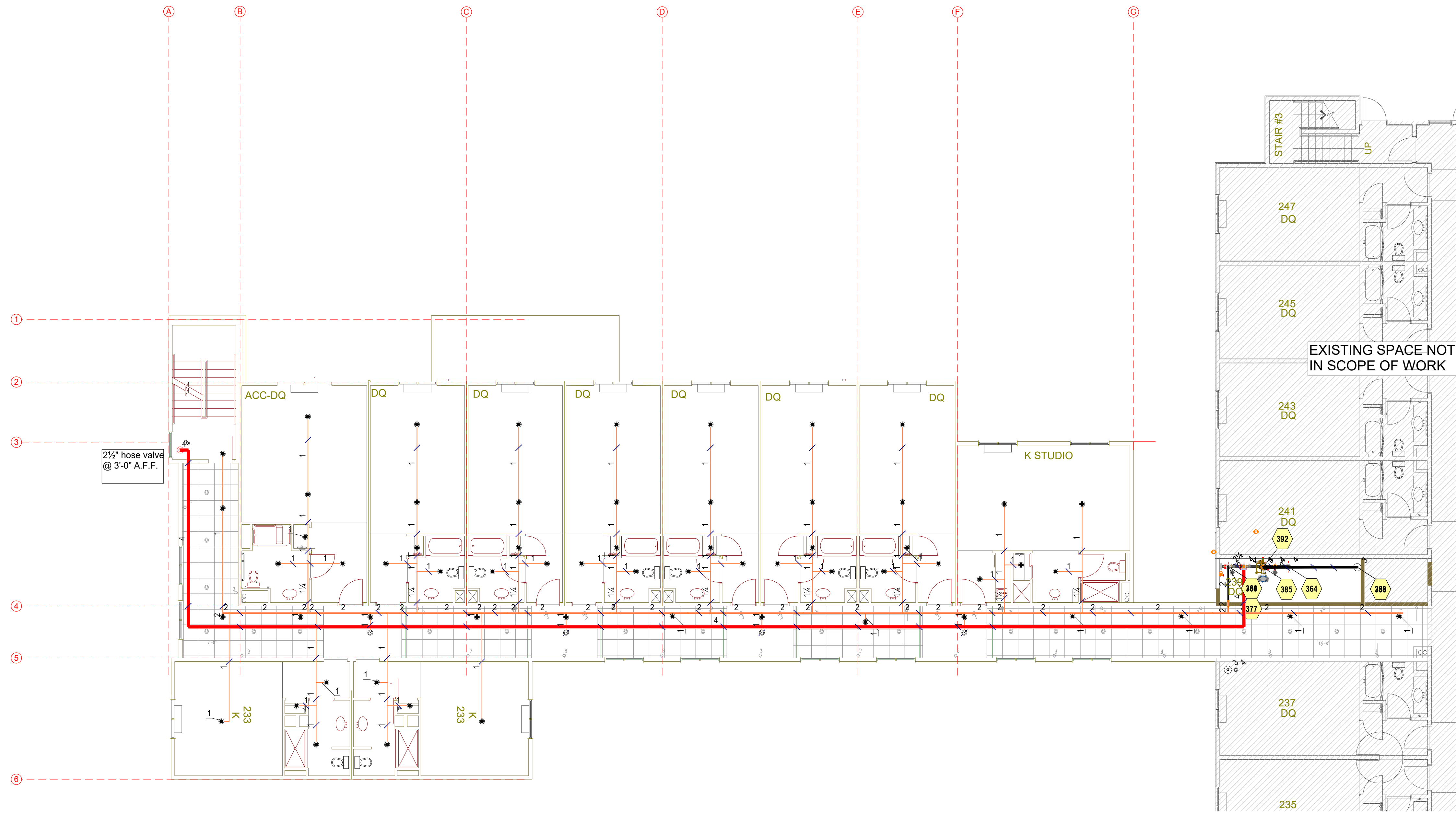
| REV# | DATE | BY | DESCRIPTION |
|------|------|----|-------------|
| | | | |

HYDRAULIC DESIGN INFO
 THIS SYSTEM IS HYDRAULICALLY DESIGNED
 THIS SYSTEM IS NOT HYDRAULICALLY DESIGNED
- FLOW TEST -
 STATIC: -
 RESIDUAL: -
 GPM FLOWING: -
 DATE & TIME: -

SPRINKLER LEGEND

| SYM | MFR | RES | TYPE | K-FACTOR | TEMP | FINISH | ESC | QTY |
|-----|--------|------|---------|----------|------|--------|-------|-----|
| ● | VIKING | FAST | PENDANT | 4.9 | 155 | WHITE | WHITE | 63 |
| ○ | VIKING | QR | UPRIGHT | 5.6 | 200 | 1/2" | BRASS | 4 |

TOTAL THIS SHEET = 67



SECOND FLOOR - PIPING PLAN
 SCALE: 1/8" = 1'-0"



City of Puyallup
 Development & Permitting Services
ISSUED PERMIT

| | |
|-------------|--------------|
| Building | Planning |
| Engineering | Public Works |
| Fire | Traffic |

WASHINGTON STATE
 CERTIFICATE OF COMPETENCY
 FIRE PROTECTOR SPECIALIST SYSTEMS
 Michael Paul Moffett
 4513-0612-C Level 3
 Fire Sprinklers Incorporated
 FRESI-988RJ
 08-1-23

CONTRACT WITH:
 Baldwin General Contracting
 1224 Santiam Rd SE
 Albany, OR 97321
 POC: Randy Patterson-541-979-1031

HANGER LEGEND:

| | |
|-----------------------------|-----------------------------|
| CPVC HANGER | TOP BEAM CLAMP W/ STRAP |
| HILTI KH-EZ1 | SAMMY SUPER SCREW (SST2030) |
| SAMMY SIDEWINDER (SWDR 516) | TRAPEZE |

DRAWING SYMBOLS:

| | |
|---------------------------|------------------------------|
| FLEXIBLE GROOVED COUPLING | WELDED PIPE TAG |
| RIGID GROOVED COUPLING | BRANCHLINE NUMBER |
| PIPE HANGER (SEE CHART) | PIPE SIZE & LENGTH CUT |
| END OF LINE RESTRAINT | HYDRAULIC NODE TAG |
| SEISMIC BRACE | 10'-10" FF & ELEVATION DATUM |

JOB NUMBER: 4807
SHEET NUMBER: FP3 OF 5



WA CL# FIRESI-988RJ
 1524 45th Street East, Suite 102
 Sumner, WA 98390
 (253) 826-0099
 www.firesprinklersinc.com

DRAWN BY: C. Streuli
REVIEWED BY: MPM
DATE: 08/28/2023
SCALE: AS NOTED
AHJ: CITY OF PUYALLUP

REVISIONS:

| REV# | DATE | BY | DESCRIPTION |
|------|------|----|-------------|
| | | | |

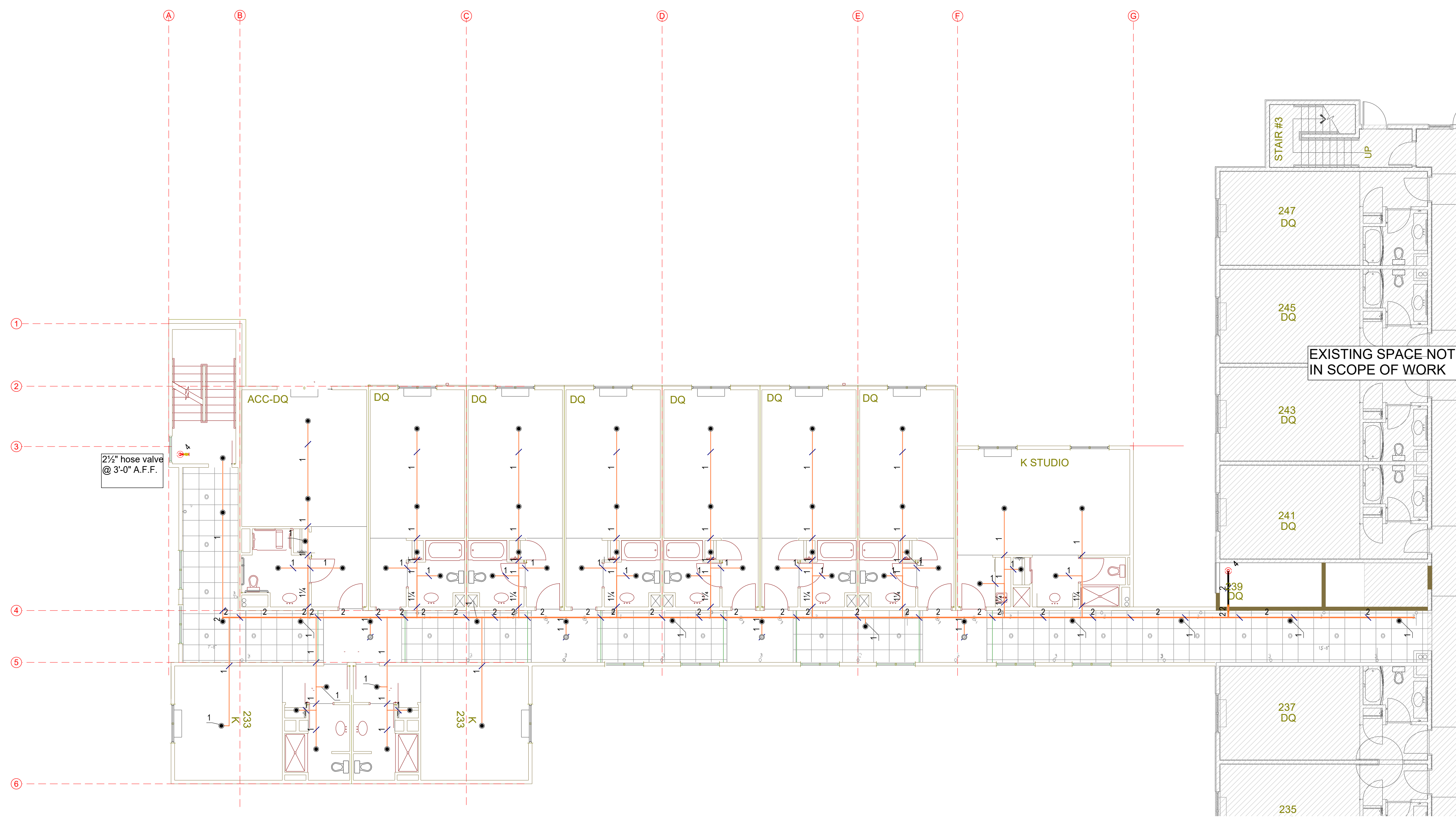
HYDRAULIC DESIGN INFO
 THIS SYSTEM IS HYDRAULICALLY DESIGNED THIS SYSTEM IS NOT HYDRAULICALLY DESIGNED
- FLOW TEST -

STATIC: -
 RESIDUAL: -
 GPM FLOWING: -
 DATE & TIME: -

SPRINKLER LEGEND

| SYM | MFR | SIN | RESP | TYPE | K-FACTOR | TEMP | FINISH | ESC | QTY |
|-----|--------|-------|------|---------|----------|------|--------|-------------|-----|
| ● | VIKING | VK468 | FAST | PENDANT | 4.9 | 155 | 1/2" | WHITE/WHITE | 63 |
| ○ | VIKING | VK950 | QR | UPRIGHT | 5.6 | 200 | 1/2" | BRASS | 4 |

TOTAL THIS SHEET = 67



THIRD FLOOR - PIPING PLAN
 SCALE: 1/8" = 1'-0"

Puyallup Hampton Inn
 1515 Meridian S
 Puyallup, WA 98371

CONTRACT WITH:
 Baldwin General Contracting
 1224 Santiam Rd SE
 Albany, OR 97321
 POC: Randy Patterson-541-979-1031

HANGER LEGEND:

| | |
|-----------------------------|-----------------------------|
| CPVC HANGER | TOP BEAM CLAMP W/ STRAP |
| HILTI KH-EZ1 | SAMMY SUPER SCREW (SSS2030) |
| SAMMY SIDEWINDER (SWDR 516) | TRAPEZE |

DRAWING SYMBOLS:

| | |
|---------------------------|------------------------|
| FLEXIBLE GROOVED COUPLING | WELDED PIPE TAG |
| RIGID GROOVED COUPLING | BRANCHLINE NUMBER |
| PIPE HANGER (SEE CHART) | PIPE SIZE & LENGTH CUT |
| END OF LINE RESTRAINT | HYDRAULIC NODE TAG |
| SEISMIC BRACE | ELEVATION DATUM |

City of Puyallup
 Development & Permitting Services
ISSUED PERMIT

| | |
|-------------|--------------|
| Building | Planning |
| Engineering | Public Works |
| Fire | Traffic |

WASHINGTON STATE
 CERTIFICATE OF COMPETENCY
 FIRE PROTECTION SPRINKLER SYSTEMS
 Michael Paul Moffett
 4513-0512-C Level 3
 Fire Sprinklers Incorporated
 FIRESI-988RJ

JOB NUMBER: 4807
SHEET NUMBER: FP4 OF 5

DRAWN BY: C. Streuli
REVIEWED BY: MPM
DATE: 08/28/2023
SCALE: AS NOTED
AHJ: CITY OF PUYALLUP

REVISIONS:

| REV# | DATE | BY | DESCRIPTION |
|------|------|----|-------------|
| | | | |

HYDRAULIC DESIGN INFO
 THIS SYSTEM IS HYDRAULICALLY DESIGNED THIS SYSTEM IS NOT HYDRAULICALLY DESIGNED
 - FLOW TEST -

STATIC: -
RESIDUAL: -
GPM FLOWING: -
DATE & TIME: -

SPRINKLER LEGEND

| SYM | MFR | RES | TYPE | K-FACTOR | TEMP | FINISH | ESC | QTY |
|-----|--------|------|---------|----------|------|--------|-------|-----|
| ⊙ | VIKING | FAST | PENDANT | 4.9 | 155 | 1/2" | WHITE | 63 |
| ⊙ | VIKING | QR | UPRIGHT | 5.6 | 200 | 1/2" | BRASS | 4 |

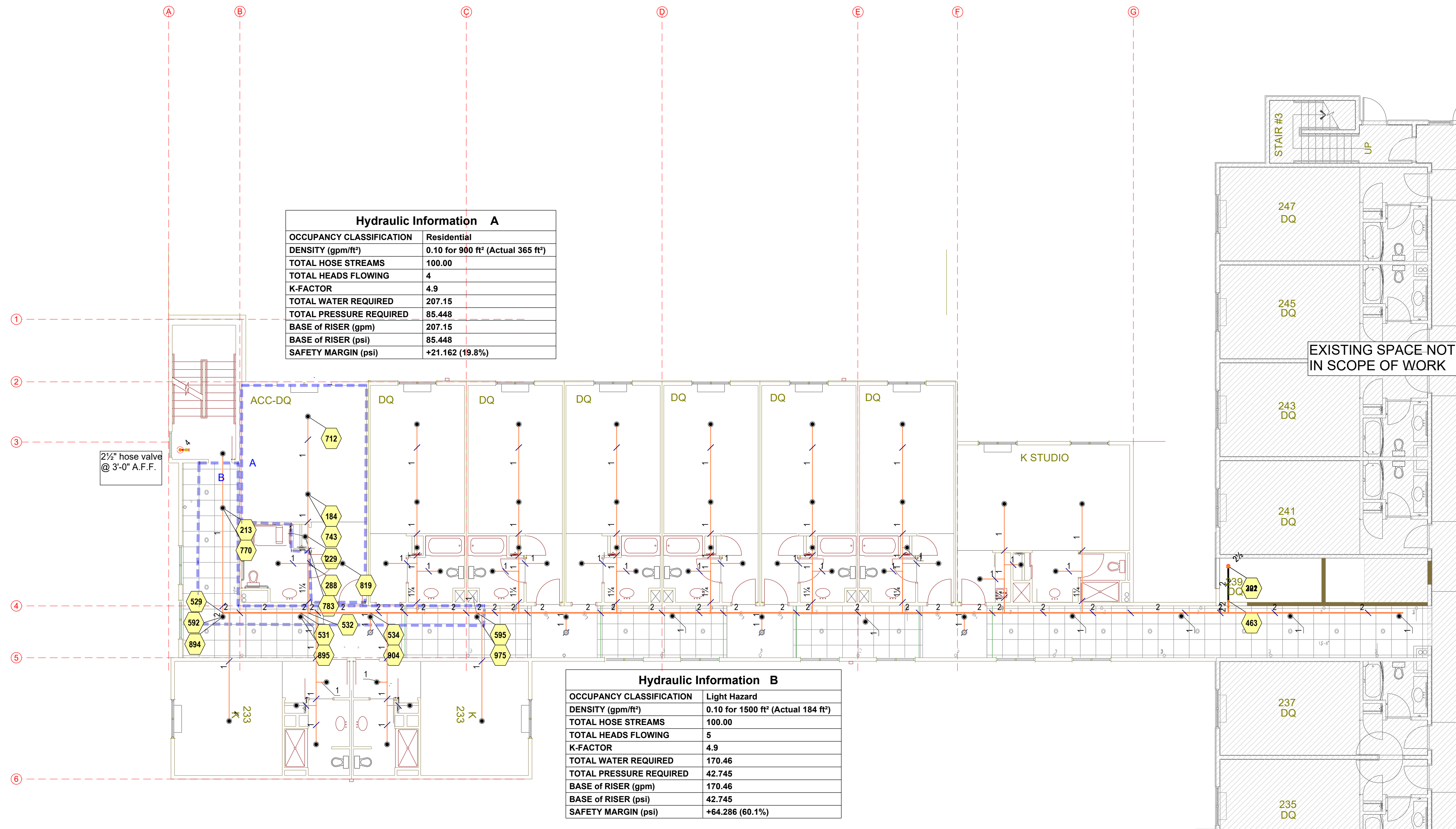
TOTAL THIS SHEET = 67

Hydraulic Information A

| | |
|--------------------------------|--|
| OCCUPANCY CLASSIFICATION | Residential |
| DENSITY (gpm/ft ²) | 0.10 for 900 ft ² (Actual 365 ft ²) |
| TOTAL HOSE STREAMS | 100.00 |
| TOTAL HEADS FLOWING | 4 |
| K-FACTOR | 4.9 |
| TOTAL WATER REQUIRED | 207.15 |
| TOTAL PRESSURE REQUIRED | 85.448 |
| BASE OF RISER (gpm) | 207.15 |
| BASE OF RISER (psi) | 85.448 |
| SAFETY MARGIN (psi) | +21.162 (19.8%) |

Hydraulic Information B

| | |
|--------------------------------|---|
| OCCUPANCY CLASSIFICATION | Light Hazard |
| DENSITY (gpm/ft ²) | 0.10 for 1500 ft ² (Actual 184 ft ²) |
| TOTAL HOSE STREAMS | 100.00 |
| TOTAL HEADS FLOWING | 5 |
| K-FACTOR | 4.9 |
| TOTAL WATER REQUIRED | 170.46 |
| TOTAL PRESSURE REQUIRED | 42.745 |
| BASE OF RISER (gpm) | 170.46 |
| BASE OF RISER (psi) | 42.745 |
| SAFETY MARGIN (psi) | +64.286 (60.1%) |



FOURTH FLOOR - PIPING PLAN
 SCALE: 1/8" = 1'-0"

City of Puyallup
 Development & Permitting Services
ISSUED PERMIT

| | |
|-------------|--------------|
| Building | Planning |
| Engineering | Public Works |
| Fire | Traffic |

WASHINGTON STATE
 CERTIFICATE OF COMPETENCY
FIRE PROTECTION SPRINKLER SYSTEMS

Michael Paul Moffett
 4513-0612-C Level 3
 Fire Sprinklers Incorporated
 FRESI-988RJ

9-1-23
 Signature

CONTRACT WITH:
Baldwin General Contracting
 1224 Santiam Rd SE
 Albany, OR 97321
 POC: Randy Patterson-541-979-1031

HANGER LEGEND:

| | |
|----|-----------------------------|
| CP | CPVC HANGER |
| CB | TOP BEAM CLAMP W/ STRAP |
| H | HILTI KH-EZ1 |
| SS | SAMMY SUPER SCREW (SST2030) |
| SW | SAMMY SIDEWINDER (SWDR 516) |
| T | TRAPEZE |

DRAWING SYMBOLS:

| | | | |
|---|---------------------------|---------------|------------------------|
| + | FLEXIBLE GROOVED COUPLING | A.1 | WELDED PIPE TAG |
| + | RIGID GROOVED COUPLING | #1 | BRANCHLINE NUMBER |
| — | PIPE HANGER (SEE CHART) | 1/0 | PIPE SIZE & LENGTH CUT |
| — | END OF LINE RESTRAINT | X | HYDRAULIC NODE TAG |
| + | SEISMIC BRACE | ★ 10'-10"FF & | ELEVATION DATUM |

JOB NUMBER: 4807
SHEET NUMBER: FP5 of 5

Puyallup Hampton Inn

1515 Meridian S
 Puyallup, WA 98371