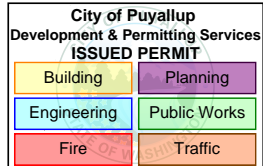


**CLOSURE ALLOWED:**

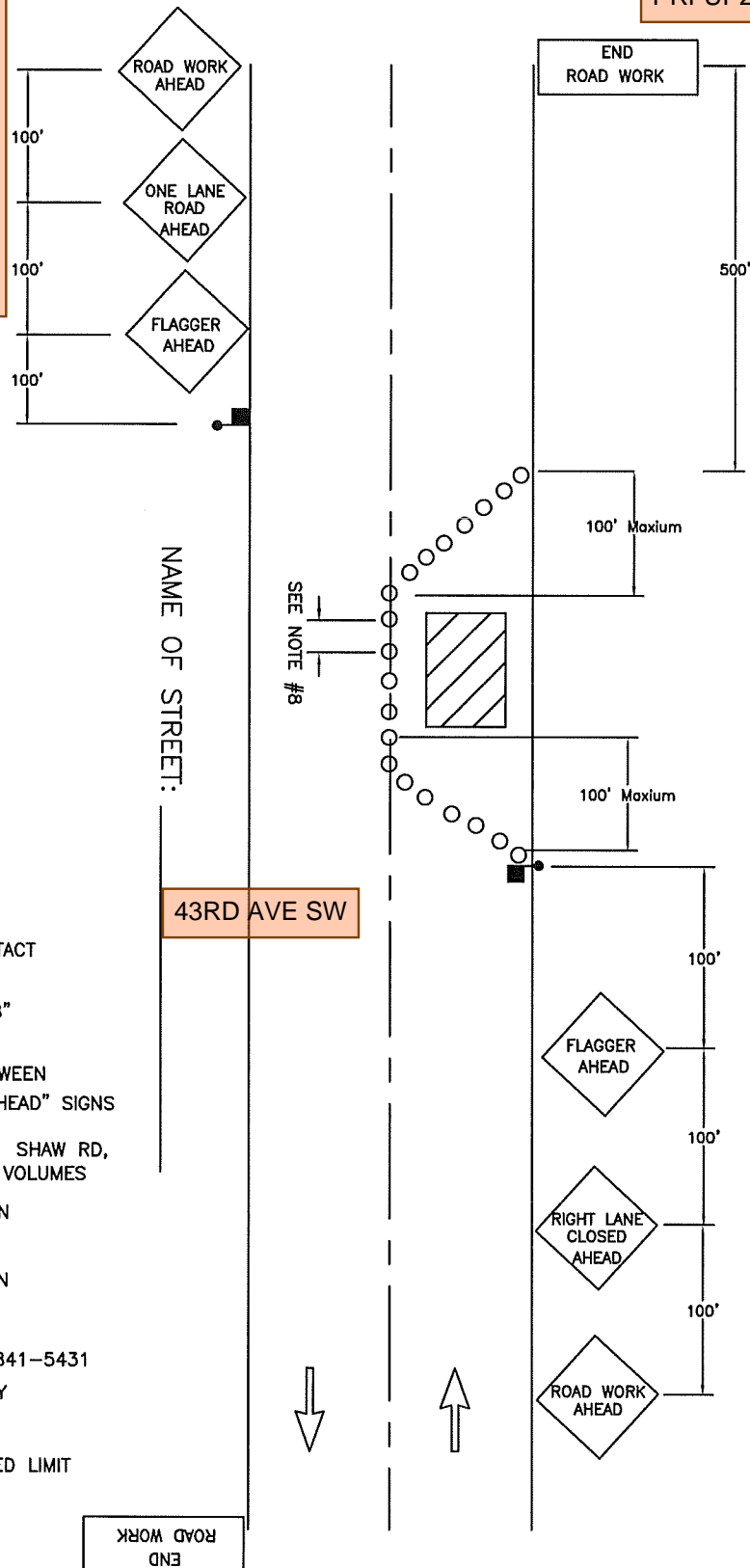
Monday - Friday  
9AM - 3PM

Call communications center at  
253-287-4456 on day of closure.  
Request a job start inspection  
through the CityView portal.

The City-issued permit packet  
shall be posted at the job site and  
available to inspectors at all times.



PRFUP20231497

**NOTES:**

- 1 FOR TWO-WAY TRAFFIC WORK ZONES
- 2 FLAGGERS SHALL REMAIN IN RADIO CONTACT AT ALL TIMES
- 3 TRAFFIC CONTROL DEVICES SHALL BE 28" RETROREFLECTIVE CONES
- 4 USE "BE PREPARED TO STOP" SIGN BETWEEN "FLAGGER AHEAD" AND "LANE CLOSED AHEAD" SIGNS ON HIGH VOLUME ROADS, SUCH AS:  
43RD AVE SE, 9TH ST SW, 5TH ST SW, SHAW RD, AND OTHER STREETS WITH COMPARABLE VOLUMES
- 5 SIGN SPACING SHALL BE 350 FEET WHEN SPEED LIMIT IS GREATER THAN 30 MPH
- 6 SIGN SPACING SHALL BE 100 FEET WHEN SPEED LIMIT IS 30 MPH OR LESS
- 7 CALL COMM CENTER DAY OF CLOSURE 841-5431
  - 7.1 CLOSURE FOR WEEKDAYS ONLY
  - 7.2 TIMES: 9:00 AM TO 3:00 PM
- 8 DISTANCE BETWEEN CONES EQUALS SPEED LIMIT IN UNITS OF FEET



**CITY OF  
PUYALLUP  
TRAFFIC  
ENGINEERING  
DIVISION**

## LANE CLOSURE ON TWO-LANE ROAD USING FLAGGERS

DRAWN J. HUNTER	PLOTTING SCALE NTS/ 1=1	DATE APPROVED 04-03	REVISED 09-30-09	TCP STANDARD
FILE NAME I:\DRAWINGS\PUBLIC WORKS\TRAFFIC\TCP	CHECKED BY M. FORD	REVISED BY S. TANDLE	NO. 7	