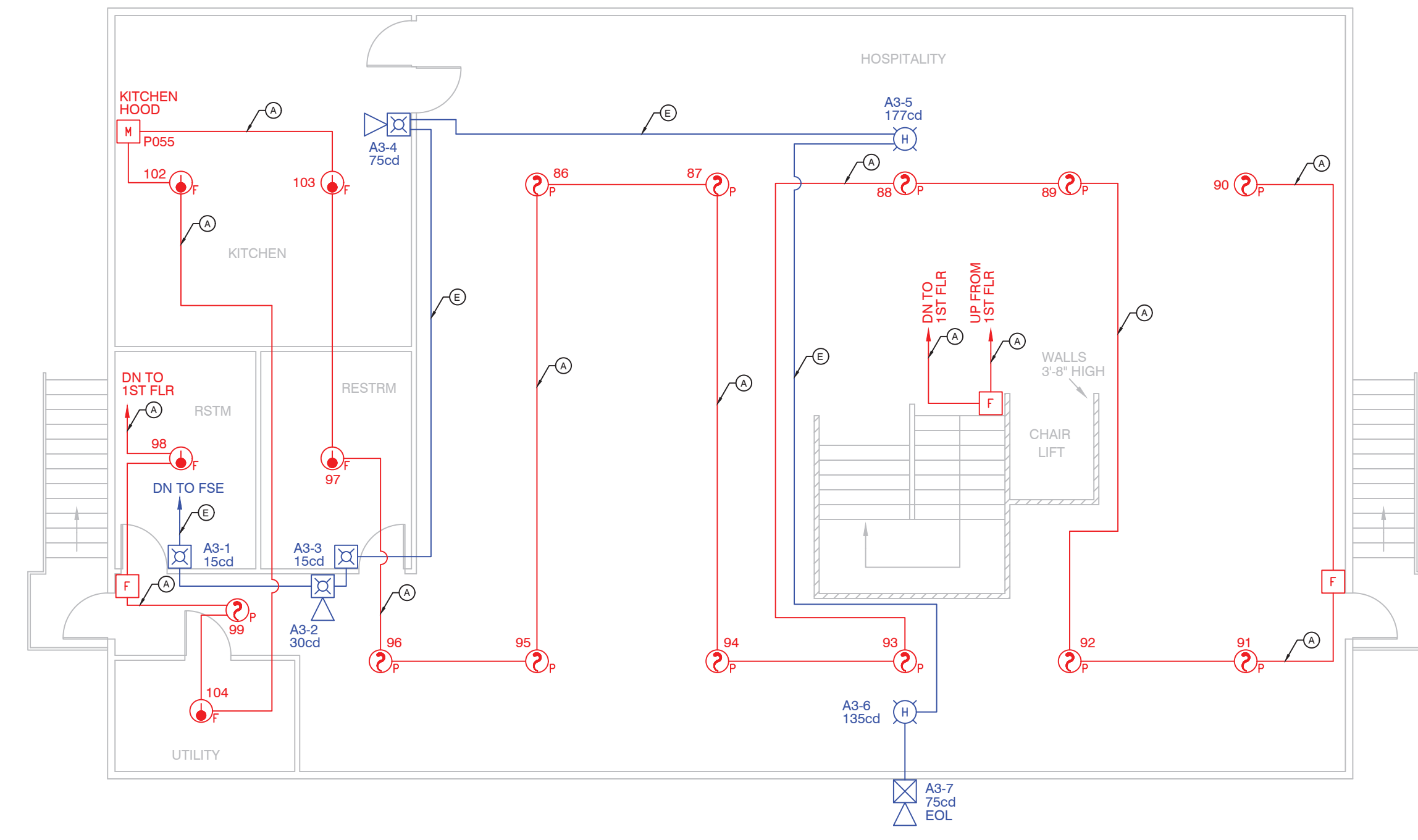
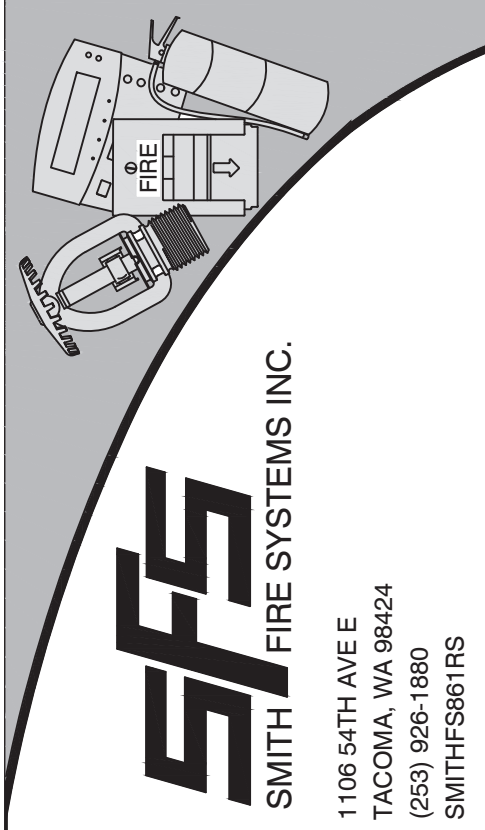


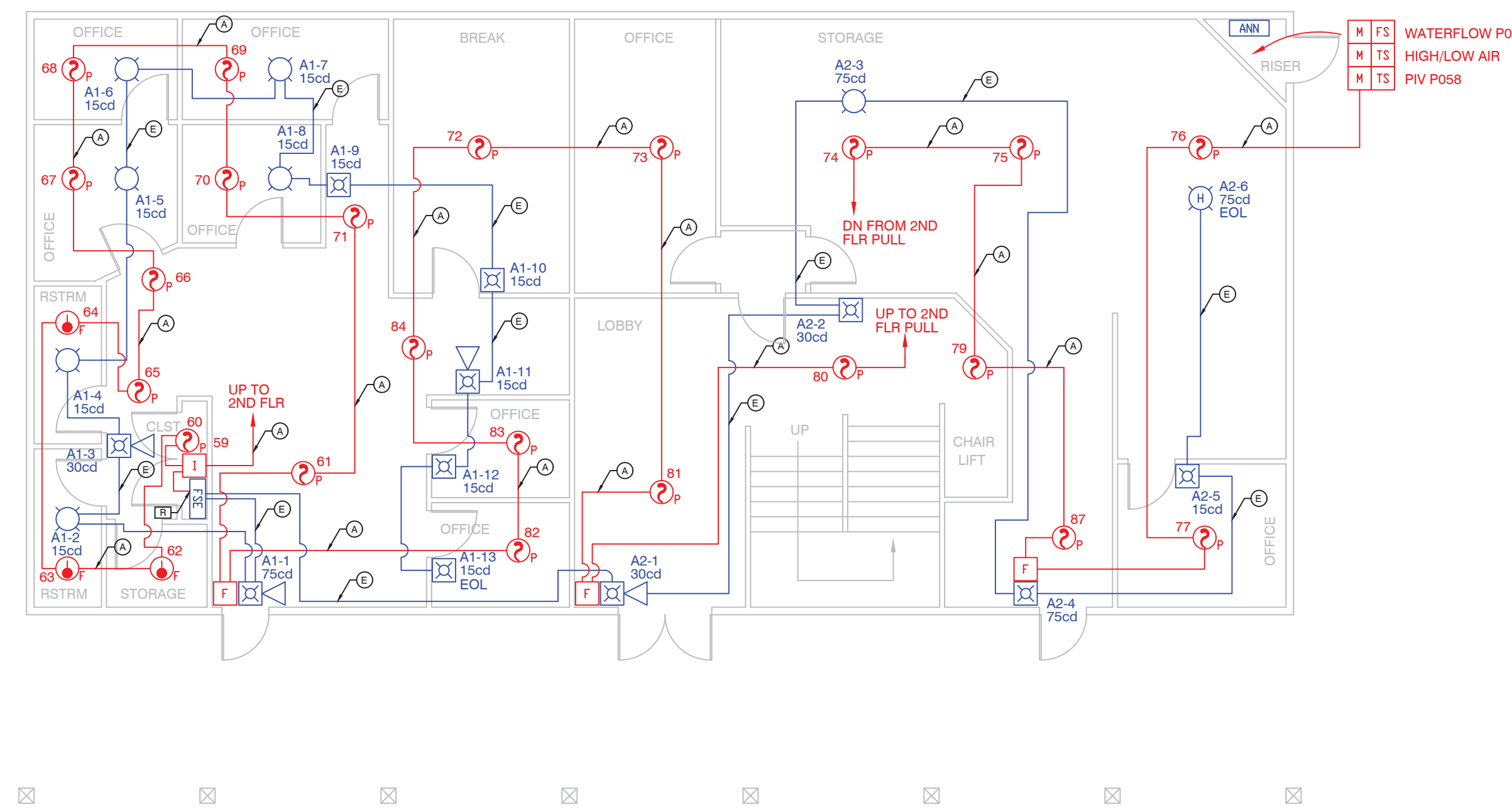


**City of Puyallup**  
Development & Permitting Services  
**ISSUED PERMIT**

Building	Planning
Engineering	Public Works
Fire	Traffic



**A** DEVICE LOCATION VIEWS - SECOND LEVEL  
SCALE: 1/8" = 1'-0"

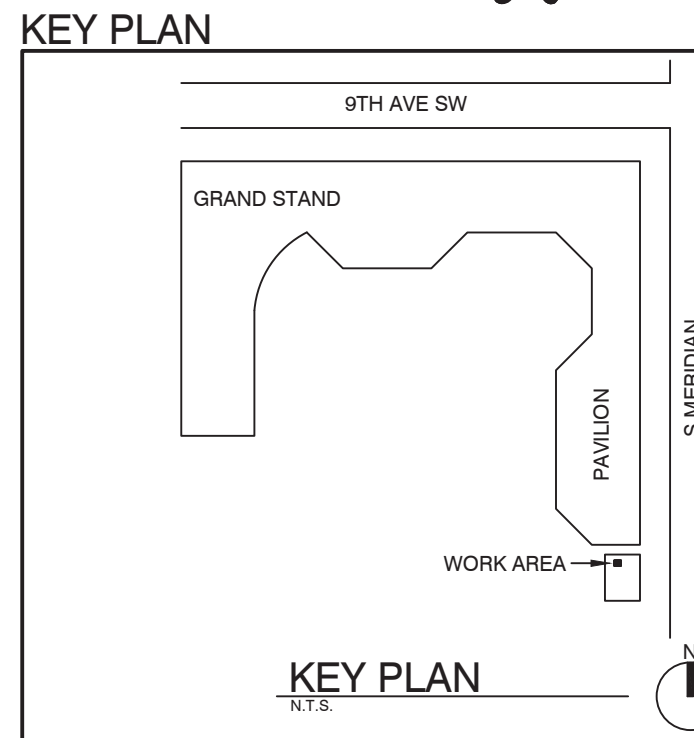


**B** DEVICE LOCATION VIEWS - FIRST LEVEL  
SCALE: 1/8" = 1'-0"

**WASHINGTON STATE FAIR  
FAIR VIEW CLUB BANQUET HALL**  
110 9TH AVE SW  
PUYALLUP, WA 98371  
PARCEL# 0420331121

ISSUE LOG:	DATE	INT	DESCRIPTION

LOUIS LYNN  
FIRE ALARM SYSTEMS III  
SPECIAL HAZARDS III  
WATER BASED SYSTEMS LAYOUT II  
CERT # 119584  
EXP 6/1/25



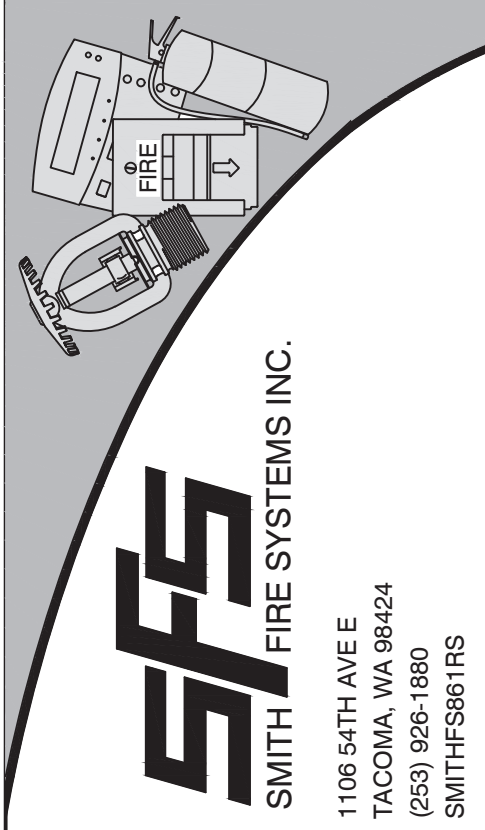
**CONSTRUCTION SET**

DESIGNER:	SCOTT JERKE
ISSUE DATE:	12/5/23
PROJECT #:	FA23114
SYSTEM:	FIRE ALARM

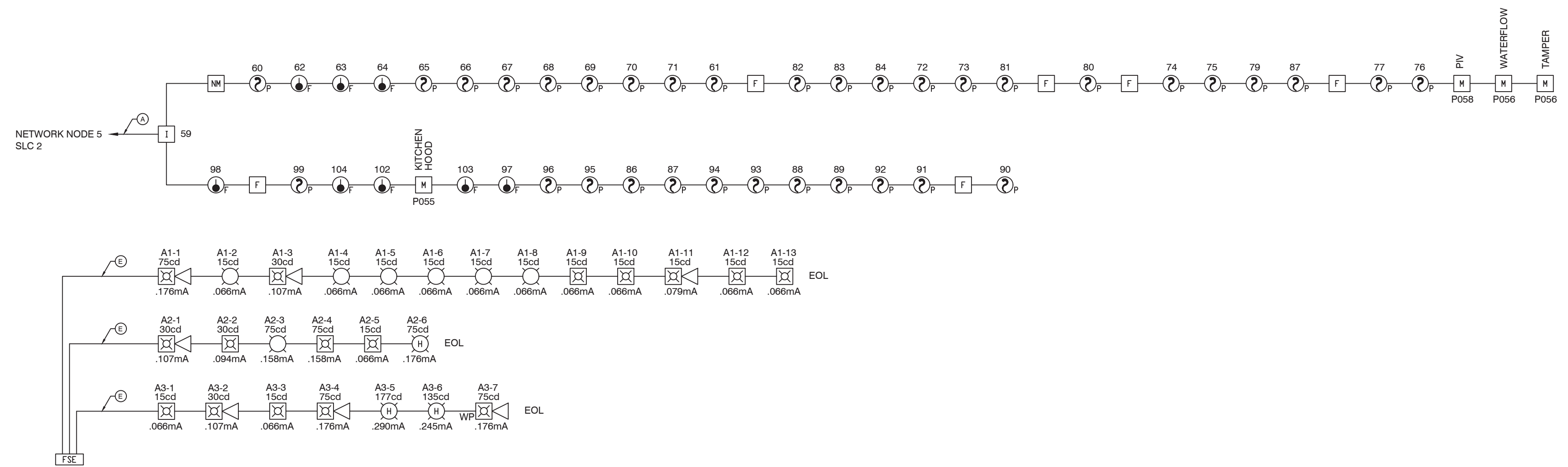
SHEET:

DEVICE LOCATION VIEWS

**FA101**



**WASHINGTON STATE FAIR  
FAIR VIEW CLUB BANQUET HALL**  
 110 9TH AVE SW  
 PUYALLUP, WA 98371  
 PARCEL# 0420331121



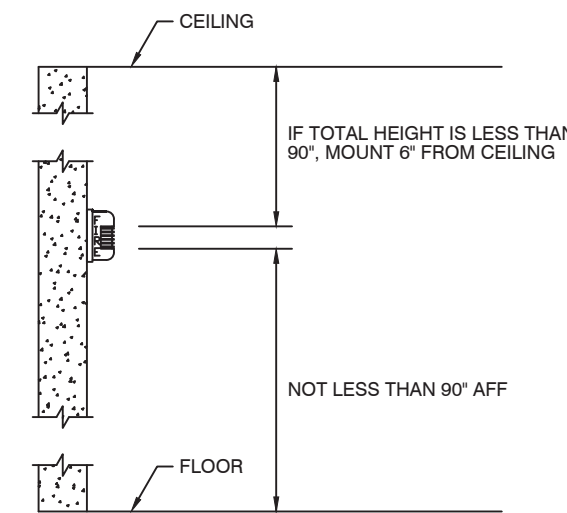
	MANUAL PULL STATION	SMOKE DETECTOR	DUCT DETECTOR	ELVATOR	LOWER LEVEL DETECTOR	UPPER LEVEL DETECTOR	UPPER LEVEL DETECTOR	UPPER LEVEL DETECTOR	UPPER LEVEL DETECTOR	UPPER LEVEL DETECTOR	UPPER LEVEL DETECTOR	UPPER LEVEL DETECTOR	UPPER LEVEL DETECTOR	UPPER LEVEL DETECTOR	UPPER LEVEL DETECTOR	UPPER LEVEL DETECTOR	UPPER LEVEL DETECTOR	UPPER LEVEL DETECTOR	UPPER LEVEL DETECTOR
DISPLAY OF AN ALARM EVENT AT THE FACP																			
DISPLAY OF A SUPERVISORY EVENT AT THE FACP																			
DISPLAY OF A TROUBLE EVENT AT THE FACP																			
DISPLAY OF AN ALARM EVENT REMOTE ANNUNCIATOR																			
DISPLAY OF A SUPERVISORY EVENT REMOTE ANNUNCIATOR																			
DISPLAY OF A TROUBLE EVENT REMOTE ANNUNCIATOR																			
TRANSMIT AN ALARM SIGNAL TO THE CENTRAL STATION																			
TRANSMIT A SUPERVISORY SIGNAL TO THE CENTRAL STATION																			
TRANSMIT A TROUBLE SIGNAL TO THE CENTRAL STATION																			
ACTIVATE ALL AUDIBLE & VISIBLE DEVICES																			
INITIATE ELEVATOR RECALL TO UPPER LEVEL																			
INITIATE ELEVATOR RECALL TO LOWER LEVEL																			
ILLUMINATE FIREMANS HAT																			

**A SCHEDULES & RISER DIAGRAMS**

**B SCHEDULES - SEQUENCE OF OPERATIONS MATRIX**

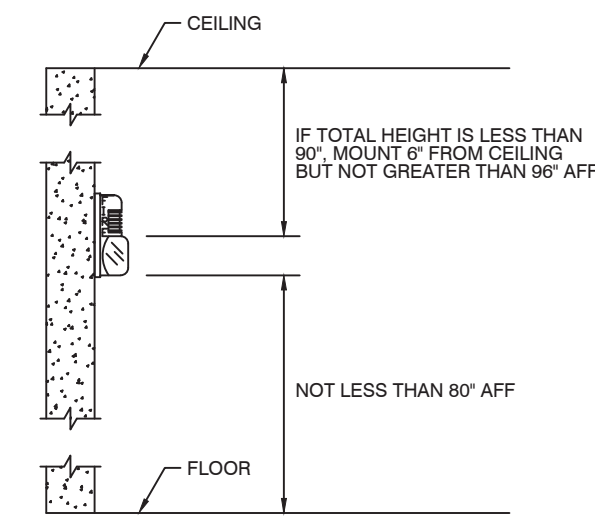
ISSUE LOG:	DATE	INT	DESCRIPTION

CONSTRUCTION SET	
DESIGNER:	SCOTT JERKE
ISSUE DATE:	12/5/23
PROJECT #:	FA23114
SYSTEM:	FIRE ALARM



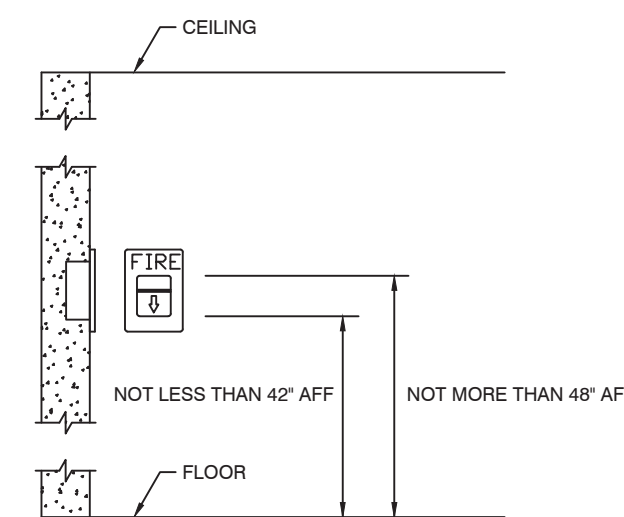
NFPA 72 2013, 18.4.8.1  
WALL MOUNTED APPLIANCES SHALL HAVE THEIR TOPS ABOVE THE FINISHED FLOORS AT HEIGHTS OF NOT LESS THAN 90" AND BELOW THE FINISHED CEILINGS AT DISTANCES OF NOT LESS THAN 6".

**A** FIRE ALARM - HORN MOUNTING



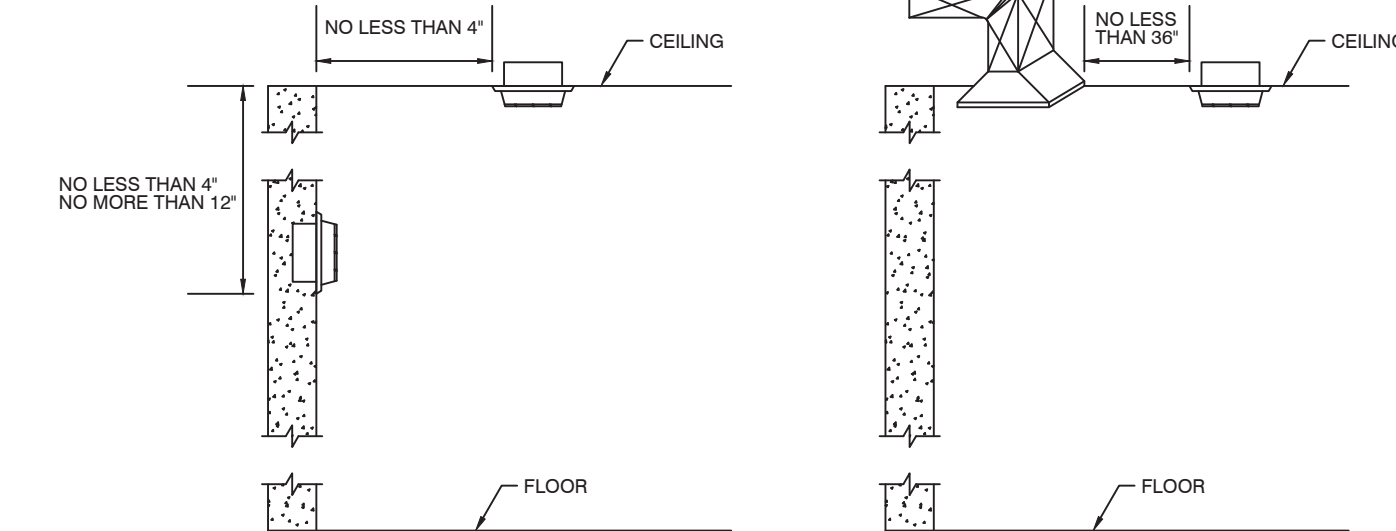
NFPA 72 2013, 18.5.5.1  
WALL MOUNTED APPLIANCES SHALL BE MOUNTED SUCH THAT THE ENTIRE LENS IS NOT LESS THAN 80" AND NOT GREATER THAN 96" ABOVE THE FINISHED FLOOR.

**B** FIRE ALARM - STROBE MOUNTING



NFPA 72 2013, 17.14.5  
THE OPERABLE PART OF A MANUALLY ACTIVATED ALARM INITIATING DEVICE SHALL BE NOT LESS THAN 42" AND NOT MORE THAN 48" FROM THE FINISHED FLOOR.

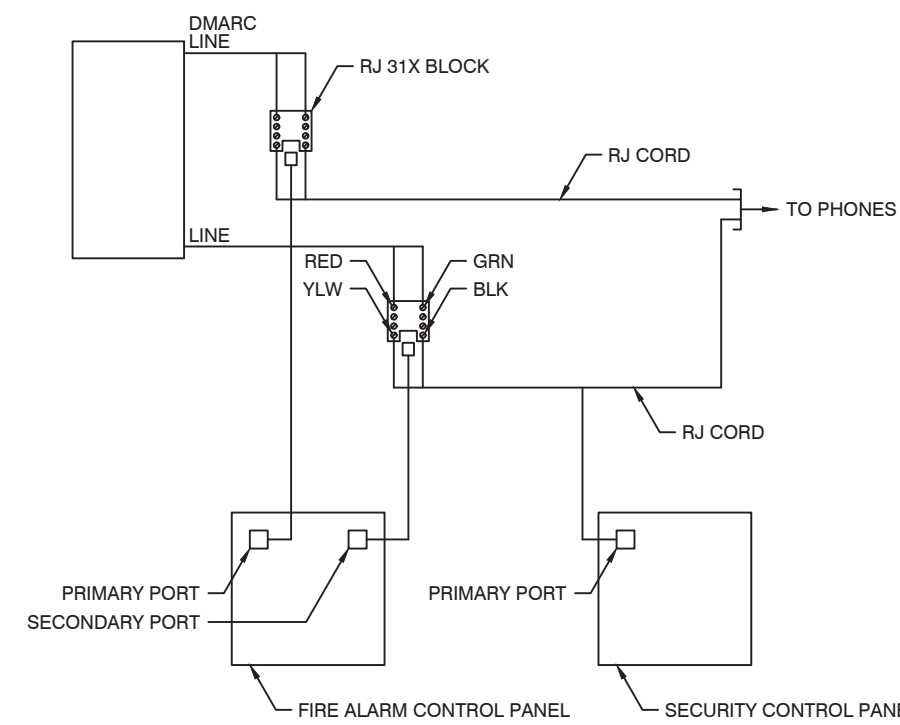
**C** FIRE ALARM - PULL STATION MOUNTING



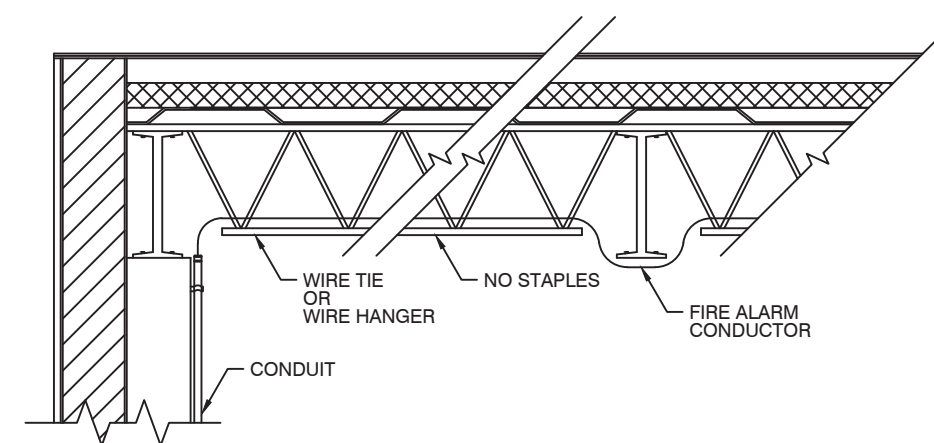
NFPA 72 2013, 17.6.3.1.3.1  
DETECTORS SHALL BE LOCATED ON THE CEILING NOT LESS THAN 4" FROM THE SIDEWALL OR ON THE SIDEWALLS BETWEEN 4" AND 12" FROM THE CEILING.

NFPA 72 2013, A.17.7.4.1  
DETECTORS SHALL NOT BE LOCATED IN DIRECT AIRFLOW OR CLOSER THAN 36" FROM AN AIR SUPPLY, DIFFUSER OR RETURN AIR OPENING.

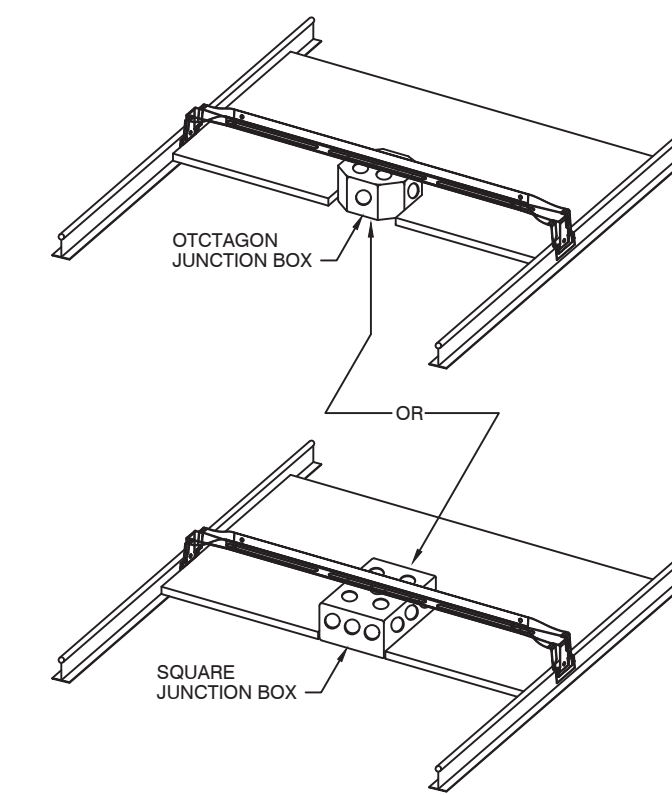
**D** FIRE ALARM - SMOKE & HEAT MOUNTING



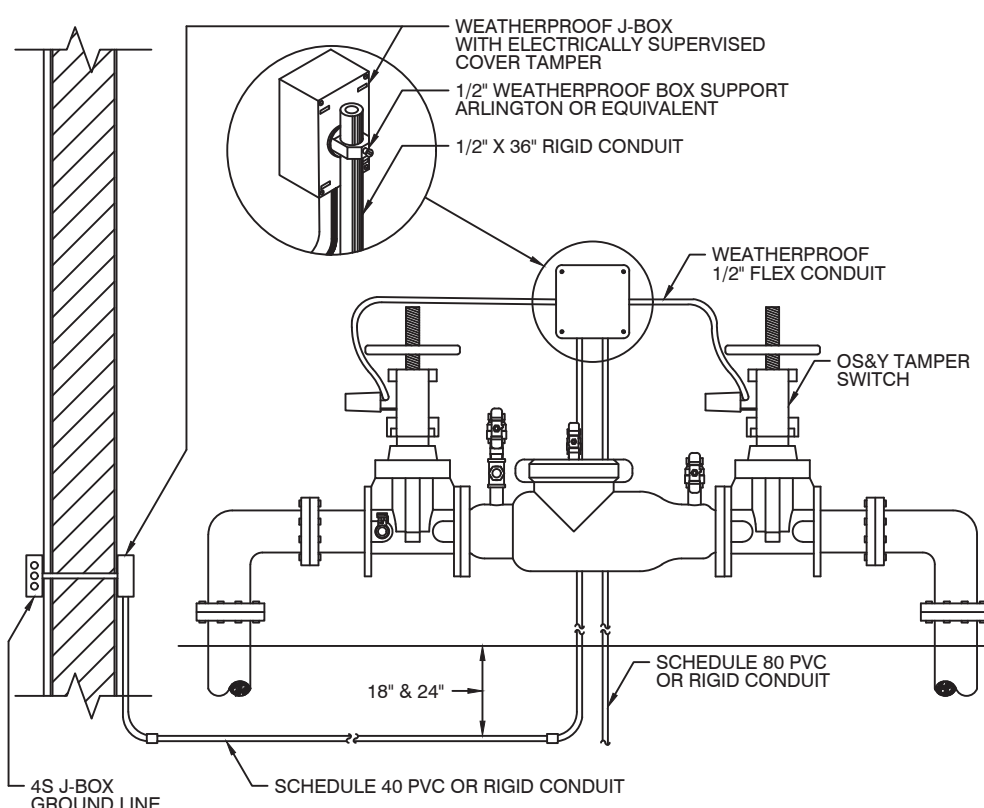
**E** FIRE ALARM - PHONE CONNECTION



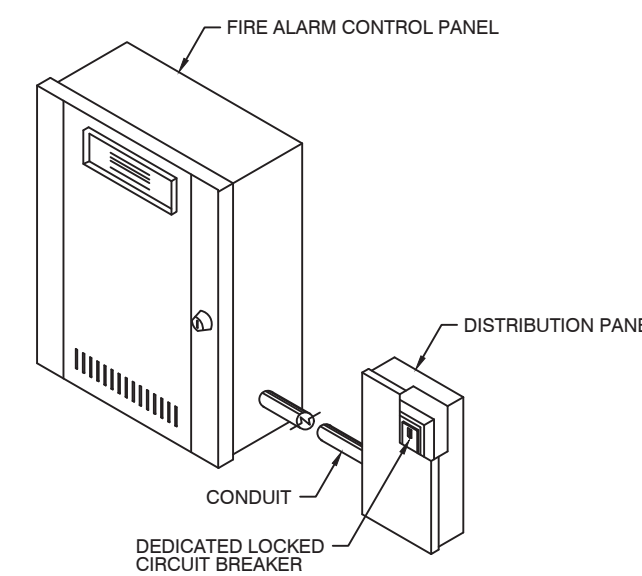
**F** FIRE ALARM - CEILING TO WALL TRANSITION AND OPEN WIRING



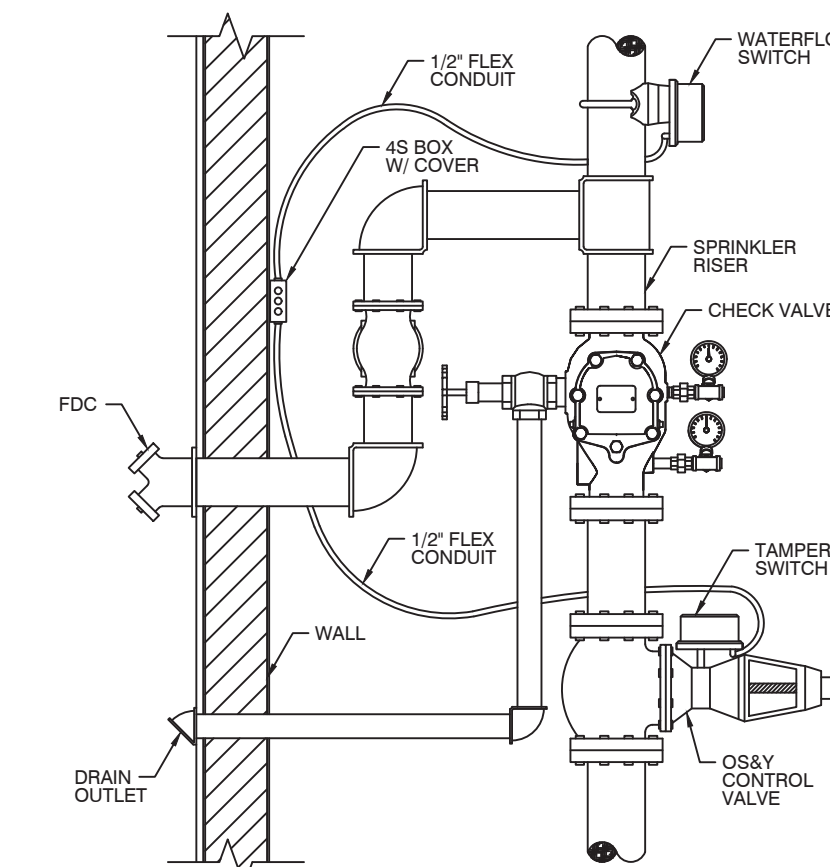
**G** FIRE ALARM - DROP CEILING & J BOX



**H** FIRE ALARM - DCVA TAMPER SWITCHES



**I** FIRE ALARM - POWER DISCONNECT



**J** FIRE ALARM - OS&Y TAMPER GATE VALVE

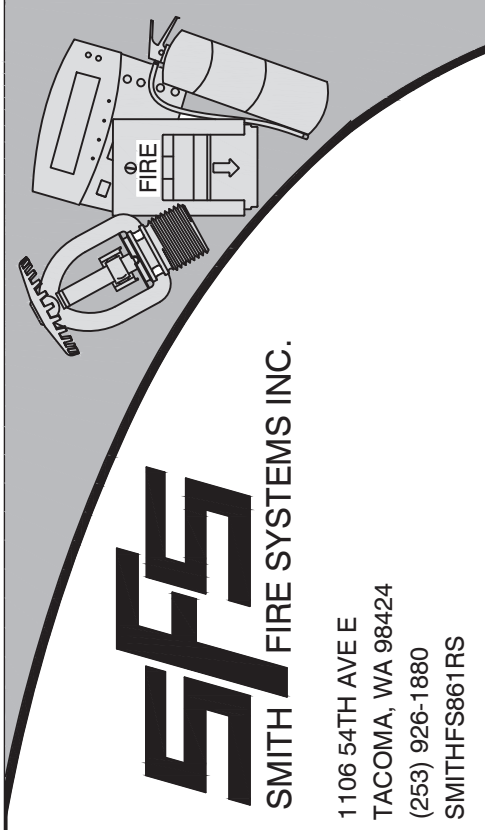
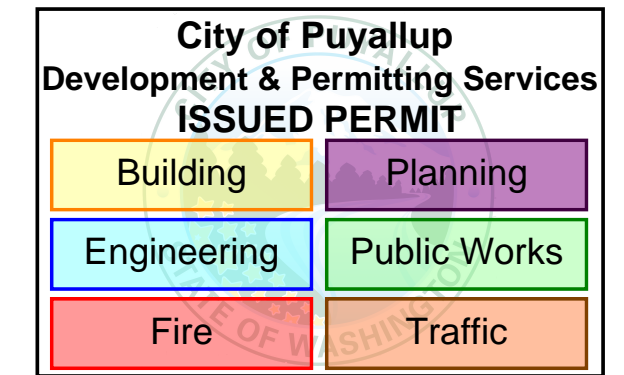
WASHINGTON STATE FAIR  
FAIR VIEW CLUB BANQUET HALL  
110 9TH AVE SW  
PUYALLUP, WA 98371  
PARCEL# 0420331121

ISSUE LOG:	
DATE	DESCRIPTION

CONSTRUCTION SET	
DESIGNER:	SCOTT JERKE
ISSUE DATE:	12/5/23
PROJECT #:	FA23114
SYSTEM:	FIRE ALARM

SHEET: PRODUCT TYPICALS

FA601



WASHINGTON STATE FAIR  
 FAIR VIEW CLUB BANQUET HALL  
 110 9TH AVE SW  
 PUYALLUP, WA 98371  
 PARCEL# 0420331121

FA23114 FAIR VIEW CLUB BANQUET HALL					
HONEYWELL FSE HPF-PS6					
Current Load:		Standby:		Alarm:	
Device Type	Quantity	Amps	Total	Amps	Total
Main System Board	1	0.13900	0.1390	0.15700	0.2550
NAC 1	1	0.00000	0.0000	1.02200	1.0220
NAC 2	1	0.00000	0.0000	0.75900	0.7590
NAC 3	1	0.00000	0.0000	1.12800	1.1280
NAC 4	0	0.00000	0.0000	0.00000	0.0000
Total Panel Loads:			0.139 Amps		3.162 Amps
Standby Current Load:		0.139 Amps	For 24 Hours =	3.336 Amp-hours	
Alarm Current Load:		3.162 Amps	For 5 Minutes =	0.266 Amp-hours	
			20% Derating =	4.322 Amp-hours	
Total System Current Load:				4.322 Amp-hours	
Battery Pair to be Used:		12VDC	Amp-hours	8	

Voltage Drop Chart						
FA23114 FAIR VIEW CLUB BANQUET HALL						
Panel	Circuit	Area	Total Wire Length	Amps	Voltage Drop	EOL Voltage
FSE	1	1ST LEVEL	746	1.022	1.921	22.079
FSE	2	1ST LEVEL	702	0.759	1.343	22.657
FSE	2	2ND LEVEL	750	1.128	2.128	21.872
FSE	4	0	0	0.000	0.000	24.000

ISSUE LOG:	DATE	INT	DESCRIPTION				

CONSTRUCTION SET  
 DESIGNER: SCOTT JERKE  
 ISSUE DATE: 12/5/23  
 PROJECT #: FA23114  
 SYSTEM: FIRE ALARM

SHEET:  
 POWER CALCULATIONS

FA801

**City of Puyallup  
Development & Permitting Services  
ISSUED PERMIT**

Building
Planning  
Engineering
Public Works  
Fire
Traffic

**SFS**  
SMITH FIRE SYSTEMS INC.  
1108 54TH AVE E  
TACOMA, WA 98424  
(253) 928-1880  
SMITHSFS861RS

**WASHINGTON STATE FAIR  
FAIR VIEW CLUB BANQUET HALL**

110 9TH AVE SW  
PUYALLUP, WA 98371  
PARCEL # 0420331121

## PS SERIES

**6 Amp and 10 Amp, 24 Volt Power Supplies**

**The PS Series are independently configurable power supplies, allowing you to pair any input with any output, and feature LED diagnostics for troubleshooting.**

**ORDERING INFORMATION**

**HFV-PS6B:** 6.0 A, 120 VAC, remote charger power supply in a lockable metal enclosure, red.

**HFV-PS6E:** 6.0 A, 240 VAC, remote charger power supply in a lockable metal enclosure, red.

**HFV-PS10B:** 10.0 A, 120 VAC, remote charger power supply in a lockable metal enclosure, red.

**HFV-PS10E:** 10.0 A, 240 VAC, remote charger power supply in a lockable metal enclosure, red.

**ZMAC-PS:** Optional Class A Converter Card, sold separately.

**TC10L0103:** Addressable Control Module for one Class B or Class A zone of supervised protected Notification Appliances. Notification Appliance Circuit option requires external 24 VDC to power notification appliances.

**TC10L0102A:** Addressable relay module containing two isolated sets of Form C contacts, which operate as a DPDT switch.

**TCR08A1059:** Addressable Monitor Module for one zone of normally open dry contact initiating devices. Includes plastic cover plate and end-of-line resistor. Module may be configured for either a Class B or Class A alarm.

**TCR08B1056A:** Dual Monitor Module. Same as TCR08A1059 except it provides two inputs for Class B wiring only.

**XPC-B:** Six-Function relay control module.

**EXR-L:** 1.2/2V VDC end-of-line relay for monitoring four-wire end-of-line devices.

**BAT-1270-BP:** Battery, 12 volt, 7.0 Ah, 5-pack (two required).

**BAT-12180-BP:** Battery, 12 volt, 1.8 Ah, 2-pack.

**BAT-12330:** Battery, 12 volt, 3.3 Ah.

**SEKIT-A062A:** Converter kit for the PS Series. Includes bracket and hardware for two 7AH or two 1.8AH batteries.

**Page 2 of 3 - DH-61094C - 3/10/2021**

**PS SERIES TECHNICAL SPECIFICATIONS**

**PRIMARY (AC) POWER**

- HFV-PS6B:** 120 VAC, 50/60 Hz, 50A maximum.
- HFV-PS10B:** 120 VAC, 50/60 Hz, 6.2 A maximum.
- HFV-PS6E:** 240 VAC, 50/60 Hz, 2.7 A maximum.
- HFV-PS10E:** 240 VAC, 50/60 Hz, 3.1 A maximum.
- Wire Size:** #12-14 AWG with 600V insulation.

**SECONDARY POWER (BATTERY) CHARGING CIRCUIT**

- Supports lead-acid batteries only.
- Float-charge voltage: 2.7 VDC.
- Maximum current charge: 1.5 A.
- Maximum battery capacity: 18 AH (inside cabinet).
- Maximum battery charging capacity: 33 AH (external cabinet).

**PHYSICAL**

**Dimensions:** 200H x 145W x 3.5D (in.) 8.0" x 5.8" x 0.14" (mm)

**Weight:** With two 7AH batteries is 29 pounds (13.2 kg). With two 1.8 AH batteries is 29 pounds (13.2 kg).

**STANDARDS AND CODES**

The PS Series complies with the following standards:

- NFPA 72:** National Fire Alarm Code.
- UL 864:** Standard for Control Units for Fire Alarm Systems (NIC and expandable mode).
- UL 864L:** Power Supplies for Fire Alarm Systems.

**AGENCY LISTINGS AND APPROVALS**

These listings and approvals apply to the modules specified in this document. In some cases, certain modules or applications may not be listed by certain approval agencies, or listing may be in process. Consult factory for latest listing status.

**UL Listed:** S24562

**CSFM:** 735-1-0137/0505

**FDNY Approved**

**Honeywell Power Products**  
12 California Road  
Renton, WA 98057-1810  
202-484-1161  
www.honeywellpower.com

**THE FUTURE IS WHAT WE MARKET**

**Honeywell**

**DURACELL® SLA Batteries**

**ULTRA**

Backed by 50-year experience

Duracell® Ultra SLA technology offers high-density power that outperforms traditional lead acid batteries. The Absorbed Glass Mat (AGM) construction is designed for efficient gas recombination and allows for maintenance-free operation. Duracell® Ultra SLA batteries maintain their high capacity with a design that is resistant to damage caused by deep discharge. Every Duracell® Ultra SLA battery is inspected to ensure the highest standards in materials and fabrication.

**50-150 Cycles at 100% Discharge**

**SPILL PROOF GUARANTEE**

**Features:**

- Duracell® Ultra SLA GEL batteries contain a proprietary grid alloy formula combined with advanced plate curing techniques to provide maximum performance.
- Duracell® Ultra batteries contain a unique electrolyte formula with a special sub-colloid additive for higher reliability and longer life.
- Will achieve more life cycles than standard AGM and Deep Cycle batteries.
- The unique construction and sealing techniques of these batteries are guaranteed to give you leak-proof operation.
- Heavy-duty lead calcium alloy grids provide an extra margin of performance and service life in cyclic applications, even after repeated over-discharges.
- Quality Assurance Engineers monitor and control the entire production process.
- Recycling of used SLA batteries available.
- Delivery available.

**Sealed Lead Acid**

**Maintenance Free**

**Spill Proof Design**

**1 Year Warranty**

**Stringent Quality Control**

**Case Quantities Available**

**Visit [batteriesplus.com](http://batteriesplus.com) for warranty information.**

**Batteries + Bulbs**

**DURACELL® SLA Batteries**

**ULTRA**

PROJECT NAME: \_\_\_\_\_  
CATALOG # \_\_\_\_\_  
DUTY TYPE \_\_\_\_\_  
NOTES \_\_\_\_\_

Battery	Volt	Capacity (Ah) (20hr)	Dimensions (LxWxH in.)	Terminal Spc.	Group Size	Weight (Lbs.)	
DURACELL 2.0SL	12V	6.8	3.78	0.98	2.4	W6	0.37
DURACELL 2.3P	12V	3.3	2.82	1.88	2.28	F1,11	1.27
DURACELL 2.3F	12V	2.3	6.97	1.38	2.04	F1,11	2.24
DURACELL 2.3W	12V	2.9	3.71	2.2	1.9	F1,11	2.26
DURACELL 2.5P	12V	3.3	5.28	2.84	0.93	F1,11	3.38
DURACELL 3.0P	12V	3.9	3.5	2.76	4.21	F1,11	-
DURACELL 3P	12V	5	3.54	2.76	4.21	F1,11	-
DURACELL 3.0F	12V	6	1.46	7.77	3.94	F2,12	1.88
DURACELL 3.5A	12V	3.3	5.51	1.89	3.21	F1,11	4.46
DURACELL 3.5F	12V	3.5	3.54	2.76	3.86	F1,11	-
DURACELL 3P	12V	7	5.95	2.56	3.94	F1,11	-
DURACELL 3P	12V	7	5.94	2.56	3.94	F1,11	-
DURACELL 3P	12V	7	5.94	2.56	3.7	F2,12	-
DURACELL 3P	12V	8	5.94	2.56	3.94	F1,11	-
DURACELL 3P	12V	9	5.94	2.56	3.94	F1,11	-
DURACELL 3P	12V	9	5.95	2.56	3.3	M8,1	-
DURACELL 3P	12V	9	5.95	2.56	3.94	F1,11	-
DURACELL 3P	12V	10	5.95	2.54	3.94	F2,12	7.3
DURACELL 3P	12V	11	5.95	3.15	6.5	F1,11	10.1
DURACELL 3P	12V	12	5.94	3.9	1.96	F2,12	-
DURACELL 3P	12V	12	5.94	3.86	1.96	F1,11	-
DURACELL 3P	12V	14	5.94	3.86	1.96	F2,12	8.81
DURACELL 3P	12V	18	7.13	3.83	4.57	F2,12	-
DURACELL 3P	12V	18	7.13	3.83	4.57	M8,1	12.83
DURACELL 3P	12V	26	6.5	4.93	4.92	M8,1	20.7
DURACELL 3P	12V	35	7.72	5.16	6.5	C	27.3
DURACELL 4.0P	12V	40	7.8	6.54	6.45	C	39
DURACELL 5.0P	12V	55	9.02	5.43	6.95	-	42.1
DURACELL 6.0P	12V	80	10.24	6.65	6.46	C	59
DURACELL 8.0P	12V	100	10.29	6.65	6.46	C	74.4
DURACELL 10.0P	12V	140	11.43	8.61	11.3	C	100
DURACELL 4.5V	4V	4.5	1.95	1.85	1.96	F2,12	1.4
DURACELL 1P	6V	3.3	1.82	0.94	2.28	F1,11	0.705
DURACELL 2P	6V	7	1.89	1.45	1.99	9F	0.73
DURACELL 3P	6V	2.9	2.8	1.46	1.82	F1,11	1.26
DURACELL 3P	6V	3.3	3.28	1.34	1.44	F1,11	1.43
RAV6-A	6V	4	2.76	1.65	1.13	F1,11	-
DURACELL 3P	6V	5	2.8	2.5	4.53	9F	2.49
DURACELL 3P	6V	5	2.76	1.65	1.21	F1,11	-
DURACELL 3P	6V	7.2	3.94	1.34	1.68	F1,11	2.43
DURACELL 4P	6V	6.2	3.9	2.14	4.53	F1,11	3.8
DURACELL 5P	6V	10	5.94	1.97	1.96	F1,11	4.851
DURACELL 5P	6V	12	5.94	1.97	1.96	F1,11	-
DURACELL 5P	6V	12	5.94	1.97	1.96	F2,12	4.802
RAV6-142	6V	14	4.25	2.8	1.51	9F	6.41
DURACELL 14A	6V	14	4.25	2.8	1.51	F1 (1) (2) (4) (11) (12) (14) (15)	6.16
DURACELL 4P	6V	40	6.25	3.37	4.57	F2,12	18.84
DURACELL 4P	6V	42	6.54	3.43	4.42	M8,1	14.62
DURACELL 2P	6V	200	10.95	6.65	6.63	C	140
DURACELL 2P	6V	3.3	5.28	1.84	2.48	F1,11	1.83

**A** PRODUCT DATA SHEETS

ISSUE LOG:

DATE	DESCRIPTION

**CONSTRUCTION SET**

DESIGNER: SCOTT JERKE

ISSUE DATE: 12/5/23

PROJECT #: FA23114

SYSTEM: FIRE ALARM

SHEET:

**PRODUCT  
DATA SHEETS**

**FA901**