

SITE PLAN: P01-P03  
SCALE: 1:100

**POWER GENERAL NOTES**

- All materials to be installed in accordance with Puget Sound Energy's (PSE) standards. Any deviation from this work sketch must be AUTHORIZED by Potelco's Project Manager and NOTED on the Foreman's Copy.
- All switching arrangements and/or outage arrangements are to be made with the Project Manager at least three (3) working days in advance.
- Contact the Utilities Underground Location Center (1-800-424-5555) at least 48 hours prior to commencing work to get the underground facilities located.
- All work is to be done in accordance with local municipal and county permit requirements as applicable.
- Inclement weather conditions may cause delays in construction times and dates.

**EROSION & SEDIMENT CONTROL REQUIREMENTS**

EROSION & SEDIMENT CONTROL SHALL BE PER PSE STANDARD PRACTICE 0150.3200 TECHNIQUES FOR TEMPORARY EROSION & SEDIMENT CONTROL & ANY ADDITIONAL LOCAL JURISDICTION REQUIREMENTS. (LOCAL JURISDICTIONS MAY HAVE ADDITIONAL REQUIREMENTS INCLUDING NOTES DETAILING WHERE EROSION OR SEDIMENT CONTROL STRUCTURES ARE TO BE INSTALLED, CROSS SECTION DETAILS OF THE TYPICAL EROSION STRUCTURES, & SPECIAL REQUIREMENTS FOR WORK IN SENSITIVE AREAS.)

**SITE SPECIFIC NOTES**

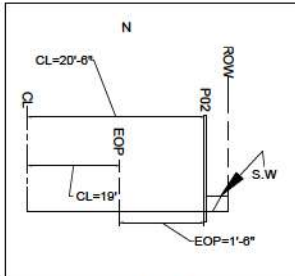
- P01 (568241-155305)**
  - TOP EXIST POLE 0'-75" ABOVE THE DISTRIBUTION CONDUCTORS
- P02 (568254-155305)**
  - INST NEW 90° CLH3 POLE AT 53' NORTH OF P01 PER TRANSMISSION WO# 111027668
  - INST 3Ø PRI NEUT SGL ARM (ØØ33.3Ø12 TAP313)
  - ATTACH EXIST OH SEC
- P03 (568255-155305)**
  - RAISE EXIST S/L 12' ABOVE TOP COMM
  - ANGLE S/L 45° SW
  - CREW TO MAINTAIN SAFETY SPACE CLEARANCES

All proposed franchise utilities shall be located within a recorded utility easement or in the public right-of-way as determined by the City of Puyallup. The City of Puyallup does not authorize or permit utility work on private property.

City of Puyallup Development & Permitting Services ISSUED PERMIT	
Building	Planning
Engineering	Public Works
Fire	Traffic

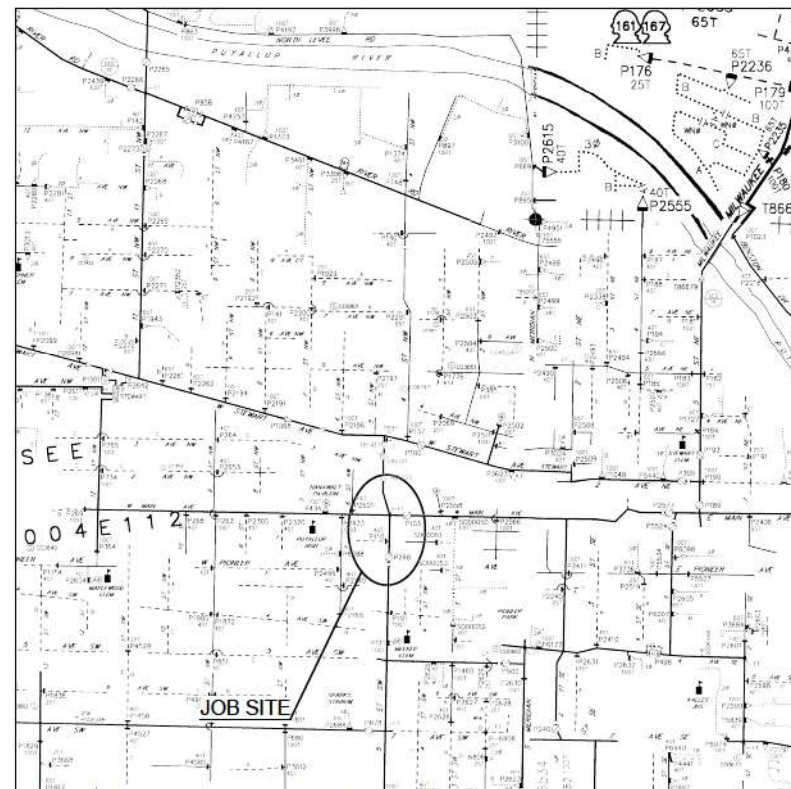
Where a curb exists, the lateral offset of all vertical obstructions shall be a minimum of 1.5' from the face of the curb to the face of the vertical obstruction and a minimum of 3' at intersections. Where no curb exists, the lateral offset of all vertical obstructions shall be a minimum of 4' measured from the edge of pavement to the face of the obstruction.

Anchored guy wire shall be installed or retrofit with a minimum 7-feet of overhead sidewalk clearance. The guy-wire shall not obstruct access to any property or to a public or private utility facility. The guy wire shall be anchored in the public right-of-way or within a private utility easement.



ROW PROFILE: P02  
NOT TO SCALE

THIS PAGE PERTAINS TO DISTRIBUTION UNDERBUILD  
SEE ADDITIONAL PRINT FOR TRANSMISSION NOTES



OH CIRCUIT MAP: D2004E112,104  
SCALE 6" = 1 MILE

VICINITY MAP



**FOREMAN (CHECK BOX WHEN COMPLETED)**

- PSE Equipment LOCKED/SECURED & Work Area left in CLEAN/SAFE Condition.
- Grid, Cable, and Switch numbers INSTALLED & VERIFIED.
- Field Changes RED-LINED on As-built.
- Materials VERIFIED and CHANGED noted on Paperwork.
- Total PRIMARY Cable noted on As-built.
- Company IDs RECORDED in correct location on As-built.
- Indicate correct PUSE SIZE on As-built & VERIFY proper PHASE.
- Deviations noted on the As-built and their reason.

I certify that the work performed meets PSE's standards and procedures and that all quality requirements are met.

Foreman's Signature: \_\_\_\_\_ Date: \_\_\_\_\_  
Print Name: \_\_\_\_\_

PROJECT PHASE	NOTIF#	ORDER#
PWR Superior	512583816	186061635
Sub Order		111027668/106136857
		N/A
		N/A

CALL (800) 424-5555  
2 BUSINESS DAYS BEFORE YOU DIG  
REAL ESTATE/EASEMENT PERMIT

REV#	DATE	BY	DESCRIPTION	FUNCTION	CONTACT	PHONE NO	DATE
3				PROJECT MGR	V. PLUVIOSE	253-553-8176	4/8/2022
1				ENGR - POWER	V. PLUVIOSE	253-553-8176	4/8/2022
				ENGR - GAS	N/A	N/A	N/A

COUNTY	Emer Sed	Gas Wk Ctr	POWER WK CTR	DRAWN BY	A. FARAH	N/A	4/8/2022
PIERCE	N/A	N/A	ØSWPRE	CHECKED BY			
1/4 SEC	OP MAP		PLAT MAP	APPROVED BY			
T20-R04E-S28	N/A		N/A	FOREMAN #1			
J-MAP NO (POWER)	OH CKT MAP	UG CKT MAP	CIRCUIT NO	FOREMAN #2			
A2004E112	D2004E112,104	R2004E112	STW-16	MAPPING			

JOINT FACILITIES ARRANGEMENTS			
UTILITIES	N/A	N/A	N/A
CONTACT	N/A	N/A	N/A
PHONE#	N/A	N/A	N/A

**DESIGNED BY POTELOCO**

**PUGET SOUND ENERGY**

ENGR1 MCI TK#5001551  
TOP CUT TRANS. POLE, INSTALL NEW TRANS. POLE, RAISE S/L  
422 W MEEKER AVE PUYALLUP, WA 98371

INCIDENT	MAOP
N/A	N/A
Gas Order	Elect Order
N/A	186061635
SCALE	PAGE
AS NOTED	1/1