

ELECTRICAL LEGEND	
SYMBOL	DESCRIPTION
	STREET LIGHT POLE FIXTURE (ARROW INDICATES DIRECTION OF AIMING FOR OPTICS). SEE STREET LIGHT POLE DETAILS ON SHEETS E1.2 & E1.3.
	CONDUIT STUB OUT (PROVIDE CONCRETE MARKER ON EXTERIOR)
	DEDICATED CONDUIT HOMERUN TO PANEL & CIRCUIT NUMBERS AS INDICATED ON PLANS
	RACEWAY CONCEALED IN WALL OR CEILING
	RACEWAY CONCEALED UNDERGROUND OR UNDER FLOOR SLAB
	MARKS INDICATE NUMBER OF #12 AWG UNLESS NOTED OTHERWISE
	GROUNDING CONDUCTOR
①	CONSTRUCTION NOTES
HH	HANDHOLE
S	STREET LIGHTING SERVICE CABINET

LIGHTING FIXTURE SCHEDULE			
SYMBOL	DESCRIPTION	LAMPS	VOLTS
			WATTS
	FIXTURE: LEOTEK LED GC1-40E-MV-NW-2-530	LED 7,200 LUMENS	120-277V 67W
NOTE: 1. FIXTURE HEADS ARE MOUNTED AT 30' AFG. 2. FIXTURES AS SPECIFIED ARE A TYPE 2 DISTRIBUTION. 3. PROVIDE WITH PHOTOCELL.			

- GENERAL NOTES
- ALL WORK SHALL BE IN ACCORDANCE WITH CITY OF PUYALLUP PUBLIC WORKS STANDARDS AND WSDOT STANDARDS AND SPECIFICATIONS.
 - THE LOCATIONS OF FEATURES SHOWN ARE APPROXIMATE AND SHALL BE VERIFIED BY THE CONTRACTOR PRIOR TO CONSTRUCTION START.
 - UTILITY LOCATIONS ARE APPROXIMATE AND SHALL BE VERIFIED IN THE FIELD BY THE CONTRACTOR PRIOR TO ANY ILLUMINATION WORK.
 - ALL WORK SHALL BE CONSISTENT WITH UTILITY AGENCY REQUIREMENTS. THE CONTRACTOR SHALL COORDINATE WITH AFFECTED UTILITY AGENCIES THROUGHOUT THE PROJECT. THE CONTRACTOR SHALL BE RESPONSIBLE FOR ANY DAMAGE TO UTILITIES.
 - CONDUIT LOCATIONS ARE SHOWN FOR ILLUSTRATIVE PURPOSES. ACTUAL LOCATIONS SHALL BE DETERMINED BY THE CONTRACTOR IN THE FIELD.
 - CONTRACTOR SHALL COORDINATE WITH THE CITY SIGNAL/ILLUMINATION TECHNICIAN AT 253.405.4390 PRIOR TO CONSTRUCTION.
 - THE LOCATION OF ALL CONDUITS, JUNCTION BOXES, POLES, AND CABINETS SHOWN ON THIS PLAN MAY BE ADJUSTED IN THE FIELD TO AVOID CONFLICTS AND MEET ADA REQUIREMENTS. ALL FINAL LOCATIONS SHALL BE APPROVED BY THE CITY TRAFFIC ENGINEER PRIOR TO CONSTRUCTION.
 - JUNCTION BOX LOCATIONS SHOWN ARE FOR ILLUSTRATIVE PURPOSES ONLY. JUNCTION BOXES SHALL BE FIELD LOCATED BY THE CONTRACTOR WITH DIRECTION FROM THE CITY.
 - CONTRACTOR SHALL ADJUST JUNCTION BOX LIDS TO BE FLUSH WITH TOP OF SIDEWALK.
 - ANY NEW JUNCTION BOX WHICH WILL BE LOCATED WITHIN OR PARTIALLY WITHIN SIDEWALK SHALL HAVE LIDS AND FRAMES WITH A NON-SLIP COATING ON THE TOP SURFACE EQUAL TO MEBAC1 OR SLIPNOTH3.
 - ALL CONDUIT SHALL BE INSTALLED 24" BELOW GRADE PER CITY OF PUYALLUP STANDARDS.

- CONSTRUCTION NOTES
- APPROXIMATE LOCATION OF EXISTING POWER POLE WITH OVERHEAD LINES.
 - PROVIDE (1) 2" PVC SCHEDULE 40 CONDUIT WITH (2) #8 CU & (1) #8 CU GND.
 - PROVIDE (1) 2" PVC SCHEDULE 40 CONDUIT WITH PULLSTRING.
 - PROVIDE SCHEDULE 80 CONDUIT AT ROADWAY CROSSINGS.
 - PROVIDE TYPE 1 JUNCTION BOX WITH SLIP RESISTANT COATING PER CITY OF PUYALLUP STANDARDS.
 - PROVIDE NEW STREET LIGHTING SERVICE CABINET PER CITY OF PUYALLUP STANDARDS. COORDINATE WITH CITY OF PUYALLUP TRAFFIC ENGINEER PRIOR TO ORDERING AND INSTALLATION.
 - PROVIDE CT'S AND METERING PER PSE STANDARDS. COORDINATE WITH PSE AS REQUIRED.

PRRNSF20230918

Separate electrical permit is required with Washington State Department of Labor & Industries.
<https://lni.wa.gov/licensing-permits/electrical/electrical-permits-fees-and-inspections-or>
Licensing information: Call 1-800-647-0982

APPROVED	
BY	CITY OF PUYALLUP ENGINEERING SERVICES
DATE	
NOTE: THIS APPROVAL IS VOID AFTER 1 YEAR FROM APPROVAL DATE. THE CITY WILL NOT BE RESPONSIBLE FOR ERRORS AND/OR OMISSIONS ON THESE PLANS. FIELD CONDITIONS MAY DICTATE CHANGES TO THESE PLANS AS DETERMINED BY THE ENGINEERING SERVICE MANAGER	



REUSE OF DOCUMENTS
THE DRAWINGS AND SPECIFICATIONS CONTAINED HEREIN ARE THE PROPRIETARY, UNPUBLISHED PROPERTY OF BCE ENGINEERS, INC. AND SHALL NOT BE REPRODUCED, COPIED, OR DISCLOSED IN WHOLE OR PART WITHOUT THE WRITTEN PERMISSION OF BCE ENGINEERS, INC.

PUYALLUP DUPLEX
STREET LIGHTING
433 & 409 43RD AV SW
PUYALLUP, WA 98373

ELECTRICAL SITE PLAN

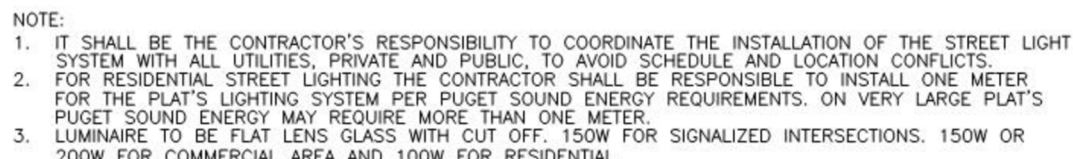
REVISIONS		
NO.	DESCRIPTION	DATE
DRAWN BY:		AS
CHECKED BY:		BH
PROJECT MANAGER:		AS

DRAWING No. 1 of 3 TOTAL

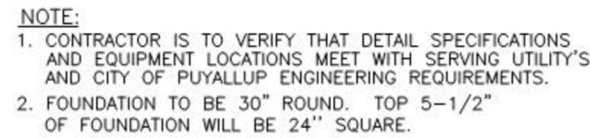
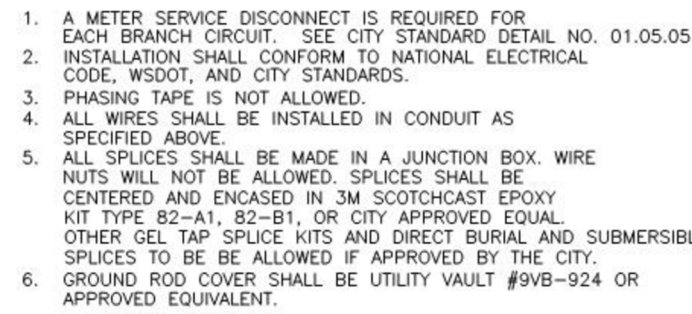
E1.1

DATE: 10/11/2023
SUBMITTAL: PERMIT
PROJECT No. 223-328

ALL CONDUIT SHALL BE BURIED A MINIMUM OF 24 INCHES DEEP. ALL ROADWAY CROSSINGS SHALL BE RIGID METALLIC OR SCHEDULE 80 PVC. CONDUIT SHALL CONFORM TO SECTION 9-29 OF WSDOT STANDARD SPECIFICATIONS. SCHEDULE 80 PVC MAY BE USED IN LOCATIONS OTHER THAN ROADWAY CROSSINGS.



SEE CITY STANDARD SECTION 01.01 ROADWAY DESIGN.



APPROVED

BY _____
CITY OF PUYALLUP
ENGINEERING SERVICES

DATE _____

NOTE: THIS APPROVAL IS VOID
1 YEAR FROM APPROVAL DATE.
CITY WILL NOT BE RESPONSIBLE
FOR ANY ERRORS AND/OR OMISSIONS ON
PLANS. FIELD CONDITIONS MAY
DICTATE CHANGES TO THESE PLANS
AS DETERMINED BY THE ENGINEER
OR SERVICE MANAGER

