

PROJECT CONTACTS	
SALESPERSON:	ANDREW EARLE 861 INDUSTRY DRIVE TUKWILA, WA 98188 PHONE: (206) 920-4321
PROJECT DESIGNER:	CHRIS NORRIS PROJECT DESIGNER 861 INDUSTRY DRIVE TUKWILA, WA 98188 PHONE: (425) 420-8786
PROJECT MANAGER:	BILL HUGGINS PROJECT MANAGER 861 INDUSTRY DRIVE TUKWILA, WA 98188 PHONE: (206) 472-3867

PROJECT FIRE ALARM SYSTEM NOTES:

- ALL WORK TO CONFORM TO 2016 ED. NFPA 72, 2018 IBC, INCLUDING WA STATE AMENDMENTS, AND 2020 NFPA 70 (NEC) STANDARDS.
- SYSTEM DESIGN BASED ON INTERNATIONAL FIRE CODE 2018 AND/OR LOCAL AUTHORITY HAVING JURISDICTION CODES AND/OR ADDENDUM CRITERIA.
- WALL MOUNT NOTIFICATION DEVICES TO BE MOUNTED 84" AFF, OR 6" BELOW CEILING (WHICHEVER DISTANCE IS LOWER), TO STROBE LENS OR SOUNDER.
- PULL STATIONS TO BE MOUNTED:
 - NO GREATER THAN 48" AFF TO DEVICE HANDLE.
 - WITHIN 5' OF THE DOOR.
- FIRE ALARM CONTROL PANEL TO BE ON UN-SWITCHED, DEDICATED 120VAC CIRCUIT WITH CIRCUIT BREAKER LOCK ON.
- WIRING METHOD TO BE OPEN CABLE UNLESS BELOW 7' AND EXPOSED, THEN IT WILL BE CONTAINED WITHIN CONDUIT UNLESS IN OCCUPANCY WHERE CONDUIT IS REQUIRED THROUGH OUT.
- SMOKE AND HEAT DETECTORS TO BE INSTALLED:
 - 12" MAX FROM SIDEWALLS
 - MORE THAN 36" FROM ANY HVAC DIFFUSER
 - NOT IN CLOSE PROXIMITY TO FLUORESCENT LIGHTING
 - AT LEAST 6" DOWN FROM PEAK IN SLOPED CEILING
- ALL JUNCTION BOXES, MUD RINGS, AND BOX COVERS TO BE PAINTED RED (INSIDE AND OUT).
- EXTERIOR HORN STROBES TO BE MOUNTED IN THE TOP 2/3 OF THE BUILDING STRUCTURE FACING THE ANTICIPATED FIRE DEPARTMENT ACCESS ROAD.

CODE INFORMATION

FIRE ALARM AUTHORITY HAVING JURISDICTION
CITY OF PUYALLUP FIRE DEPARTMENT

FIRE ALARM DESIGNER OF RECORD
HOWARD WILLIAMSON
NICET LEVEL IV, FIRE ALARM SYSTEMS
NICET ID: 82289

PROJECT CODE REFERENCES:

- INTERNATIONAL BUILDING CODE (2018ED), INC. WASH. STATE AMENDMENTS
- INTERNATIONAL FIRE CODE (2018ED), INC. WASH. STATE AND CITY OF SEATTLE AMENDMENTS
- INTERNATIONAL MECHANICAL CODE (2018ED)
- NATIONAL FIRE ALARM AND SIGNALING CODE (NFPA 72, 2016ED)
- NATIONAL ELECTRICAL CODE (NFPA 70, 2020ED)

PROJECT DESCRIPTION

THE INTENT OF THIS DESIGN IS TO INSTALL A NEW FIRE ALARM SYSTEM FOR OWNER IMPROVEMENT.

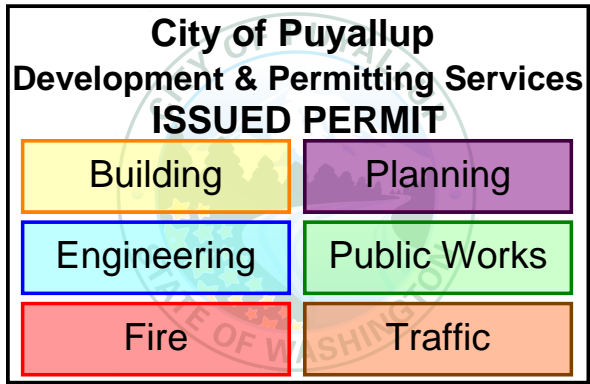
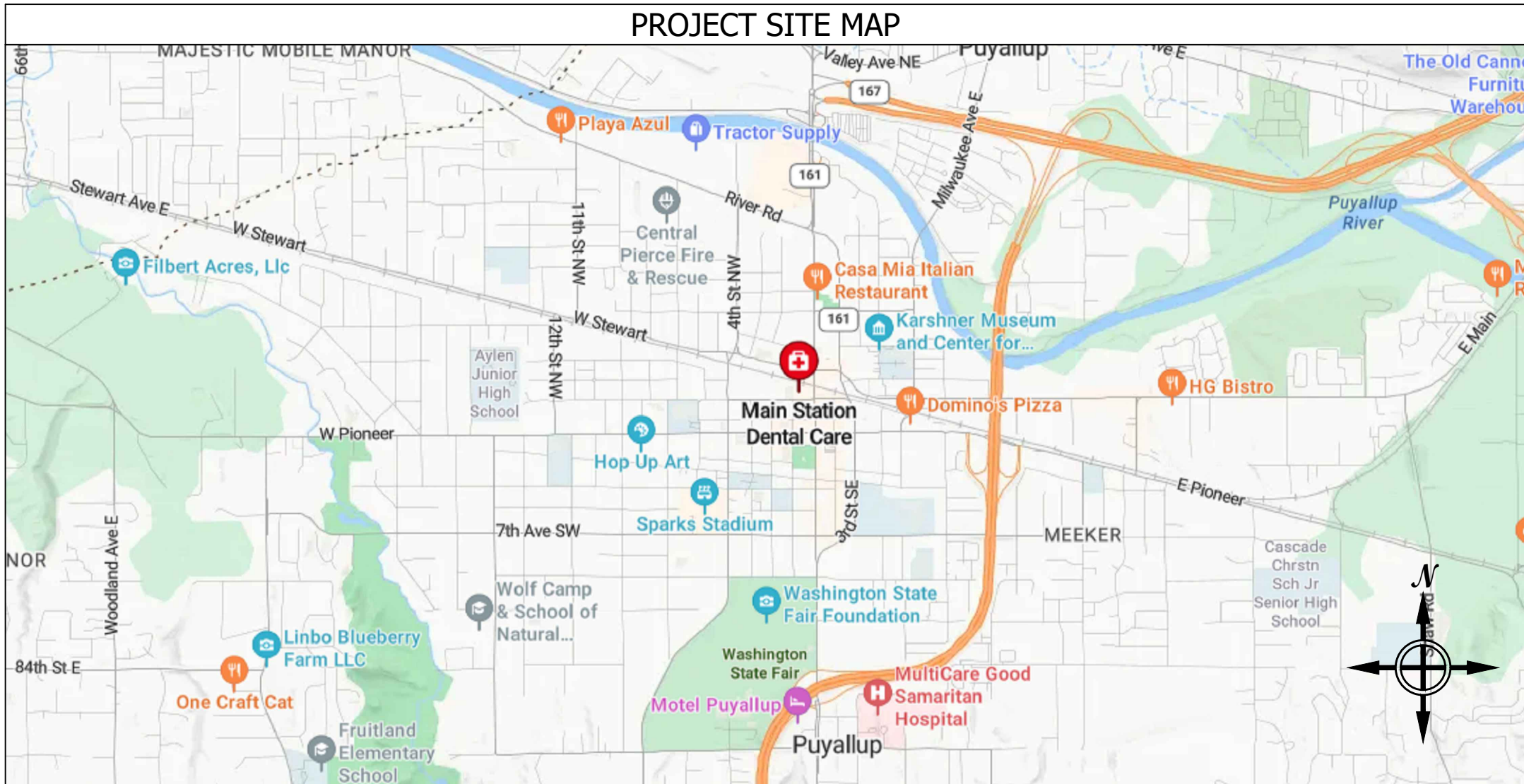
COMMUNICATION METHOD

COMMUNICATION OF ALL TROUBLE, SUPERVISORY, AND ALARM SIGNALS FOR THIS OWNER IMPROVEMENT SHALL BE PROVIDED AND INSTALLED WITH A COMMUNICATOR/COMMUNICATION MEANS ACCEPTABLE BY THE AHJ, VIA THE FACP.

CHC PUYALLUP GARAGE

SEA-TAC ELECTRIC

111 W. MAIN, PUYALLUP, WA 98371

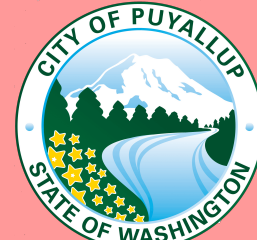


		INPUT/OUTPUT MATRIX																	
		CTRL UNIT ANNUNCIATION						NOTIFICATION						ELEVATOR					
SYSTEM INPUTS	SYSTEM OUTPUTS	A	B	C	D	E	F	G	H	I	J	K	L	M	N	O	P	Q	R
	ACTUATE COMMON ALARM SIGNAL INDICATOR	*	*				*	*	*	*					*				
	ACTUATE AUDIBLE ALARM SIGNAL	*	*				*	*	*	*					*				
	ACTUATE COMMON SUPERVISORY SIGNAL INDICATOR	*	*				*	*	*	*					*				
	ACTUATE AUDIBLE SUPERVISORY SIGNAL	*	*				*	*	*	*					*				
	ACTUATE COMMON TROUBLE SIGNAL INDICATOR	*	*				*	*	*	*					*				
	ACTUATE AUDIBLE TROUBLE SIGNAL	*	*				*	*	*	*					*				
	ACTUATE APPROPRIATE LOCATION INDICATOR	*	*				*	*	*	*					*				
	ACTUATE ALARM EVACUATION SIGNALS	*	*				*	*	*	*					*				
	DISPLAY CHANGE OF STATUS	*	*				*	*	*	*					*				
	TRANSMIT ALARM SIGNAL TO SUPERVISING STATION	*	*				*	*	*	*					*				
	TRANSMIT SUPV. SIGNAL TO SUPERVISING STATION	*	*				*	*	*	*					*				
	TRANSMIT TROUBLE SIGNAL TO SUPERVISING STATION	*	*				*	*	*	*					*				
	RECALL ELEVATORS TO LEVEL 1 (PRIMARY)																		
	FLASH ELEVATOR "FIRE HAT"																		

NOTE: THIS IS A TYPICAL MATRIX DESIGN. NOT ALL ASPECTS MAY BE APPLICABLE TO SPECIFIC JOB.

City of Puyallup
Fire
REVIEWED
FOR
COMPLIANCE

DDrake
01/31/2024
11:22:51 AM



THE APPROVED CONSTRUCTION
PLANS AND ALL ENGINEERING
MUST BE POSTED ON THE JOB AT
ALL INSPECTIONS IN A VISIBLE AND
READILY ACCESSIBLE LOCATION.

Approval of submitted plans is not an
approval of omissions or oversight by this
office or noncompliance with any
applicable regulations of local government.
The contractor is responsible for making
sure that the building complies with all
applicable building codes and regulations of
the local government.

SHEET INDEX	
SHEET NUMBER	SHEET DESCRIPTION
FA0.00	COVER SHEET LEGENDS & INDEX
FA0.01	TYPICAL WIRING DETAILS
FA0.02	TYPICAL DEVICE MOUNTING REQUIREMENTS
FA0.03	NAC CIRCUIT LOAD, VOLTAGE DROP & BATTERY LOAD AND BACK-UP CALCULATIONS
FA0.10	FIRE ALARM SYSTEM RISER DIAGRAM
FA2.01N	LEVEL 1 FIRE ALARM NOTIFICATION SYSTEM PLAN
FA2.01I	LEVEL 1 FIRE ALARM INITIATION SYSTEM PLAN
FA2.02	LEVEL 2 FIRE ALARM SYSTEM PLAN
FA2.03	LEVEL 3 FIRE ALARM SYSTEM PLAN
FA2.04	ROOF FIRE ALARM SYSTEM PLAN

FIRE ALARM SYSTEM EQUIPMENT LEGEND						
SYMBOL	QTY	PART #	MANUFACTURER	DESCRIPTION	MOUNTING	BACK BOX
FACP	1	IPA-4000	POTTER	FIRE ALARM SYSTEM CONTROL PANEL	MAX 66" AFF TO CENTER OF DOOR OF PANEL, MINIMUM 36" OPENING CLEARANCE BETWEEN MULTIPLE PANELS IN ROOMS	INCLUDED
BPS	1	PSN-106	POTTER	BOOSTER POWER SUPPLY PANEL	MAX 66" AFF TO CENTER OF DOOR OF PANEL, MINIMUM 36" OPENING CLEARANCE BETWEEN MULTIPLE PANELS IN ROOMS	INCLUDED
?	69	PAD200-PD W/PAD100-60B	POTTER	INTELLIGENT PHOTO ELECTRIC SMOKE DETECTOR W/BASE	CEILING MOUNTED; SEE PROJECT FIRE ALARM SYSTEM NOTE 7, THIS SHEET; 30'-0" NOMINAL SPACING	4" SQUARE
? _A	18	PAD200-PD W/PAD100-60B	POTTER	INTELLIGENT PHOTO ELECTRIC SMOKE DETECTOR W/BASE	ABOVE FINISHED CEILING MOUNTED	4" SQUARE
?	4	PAD100-HD	POTTER	INTELLIGENT CONVENTIONAL HEAT DETECTOR W/BASE	CEILING MOUNTED; SEE PROJECT FIRE ALARM SYSTEM NOTE 7, THIS SHEET; 30'-0" NOMINAL SPACING	4" SQUARE
F	12	PAD100-PSDA	POTTER	ADDRESSABLE MANUAL PULL STATION	WALL MOUNTED 48" AFF TO PULL STATION HANDLE	4" SQUARE
TS	5	(BY OTHERS)		TAMPER SWITCH (SUPPLIED BY OTHERS)	FIELD LOCATE MODULES. MODULES SHALL BE MOUNTED NO MORE THAN 36" FROM THE DEVICE(S) BEING SUPERVISED	
WF	3	(BY OTHERS)		WATERFLOW (SUPPLIED BY OTHERS)	FIELD LOCATE MODULES. MODULES SHALL BE MOUNTED NO MORE THAN 36" FROM THE DEVICE(S) BEING SUPERVISED	
MM	8	PAD100-MIM	POTTER	ADDRESSABLE MICRO INPUT MODULE	FIELD LOCATE MODULES. MODULES SHALL BE MOUNTED NO MORE THAN 36" FROM THE DEVICE(S) BEING SUPERVISED	4" SQUARE
RM	4	PAD100-OROI	POTTER	ONE RELAY & ONE INPUT MODULE	FIELD LOCATE MODULES. MODULES SHALL BE MOUNTED NO MORE THAN 36" FROM THE DEVICE(S) BEING SUPERVISED	4" SQUARE
?	22	PC2WL	SYSTEM SENSOR	HORN STROBE - CEILING MOUNT - WHITE	CEILING-MOUNTED	SINGLE GANG
?	15	SCWL	SYSTEM SENSOR	STROBE - CEILING MOUNT - WHITE	CEILING-MOUNTED	SINGLE GANG
?	29	P2RK	SYSTEM SENSOR	OUTDOOR HORN STROBE - WALL MOUNT - RED	WALL-MOUNTED MAX 96" TO LENS OR WITHIN 6" OF CEILING ON LOW CEILINGS; SEE PROJECT FIRE ALARM SYSTEM NOTE 9, THIS SHEET.	4" SQUARE
?	1	PBA-2410	POTTER	OUTDOOR BELL - WALL MOUNT - RED	WALL-MOUNTED MAX 96" TO LENS OR WITHIN 6" OF CEILING ON LOW CEILINGS; SEE PROJECT FIRE ALARM SYSTEM NOTE 9, THIS SHEET.	BBX1

FIRE ALARM SYSTEM WIRE LEGEND				
SYMBOL	DESCRIPTION	COLOR CODING	CIRCUIT APPLICATION	NOTES
B	14 AWG 2 CONDUCTOR BARE COPPER, TWISTED, NON-SHIELDED PLENUM FIRE ALARM, FPLP (UL)	RED JACKET w/ YELLOW STRIPE	NAC POWER CIRCUIT	
A	18 AWG 2 CONDUCTOR BARE COPPER, TWISTED, NON-SHIELDED PLENUM FIRE ALARM, FPLR (UL), 1/2" EMT CABLE	RED JACKET w/ BLUE STRIPE	DIGITAL DATA BUS (NFC-DA, RM, RPU)	
F	18 AWG 2 CONDUCTOR FPL SHLD SOL 2-HR LSZH 105C EMT CABLE	RED JACKET	DIGITAL DATA BUS	
NOTES: **STRIPEs ARE NOT REQUIRED. HOWEVER IT DOES MAKE IT EASIER FOR CIRCUIT IDENTIFICATION.				
1- NOT USED				
2- FPLP CAN BE USED IN MOST ALL APPLICATIONS WITH THE EXCLUSION OF WET AND CIRCUIT INTEGRITY REQUIREMENTS.				
3- INSTALL WIRING PER NEC. USE CABLE TYPE CONSISTENT WITH NEC REQUIREMENTS, IE: PLENUM, RISER, UNDERGROUND, ETC.				
4- NOT USED				
5- THIS CABLE MUST BE INSTALLED IN A CONTINUOUS CONDUIT RACEWAY POINT-TO-POINT. ABSOLUTELY NO SPLICES ARE ALLOWED. NO MC ALLOWED.				
6- THIS IS A SPECIFIC CABLE, NO ALTERNATES ARE ALLOWED.				



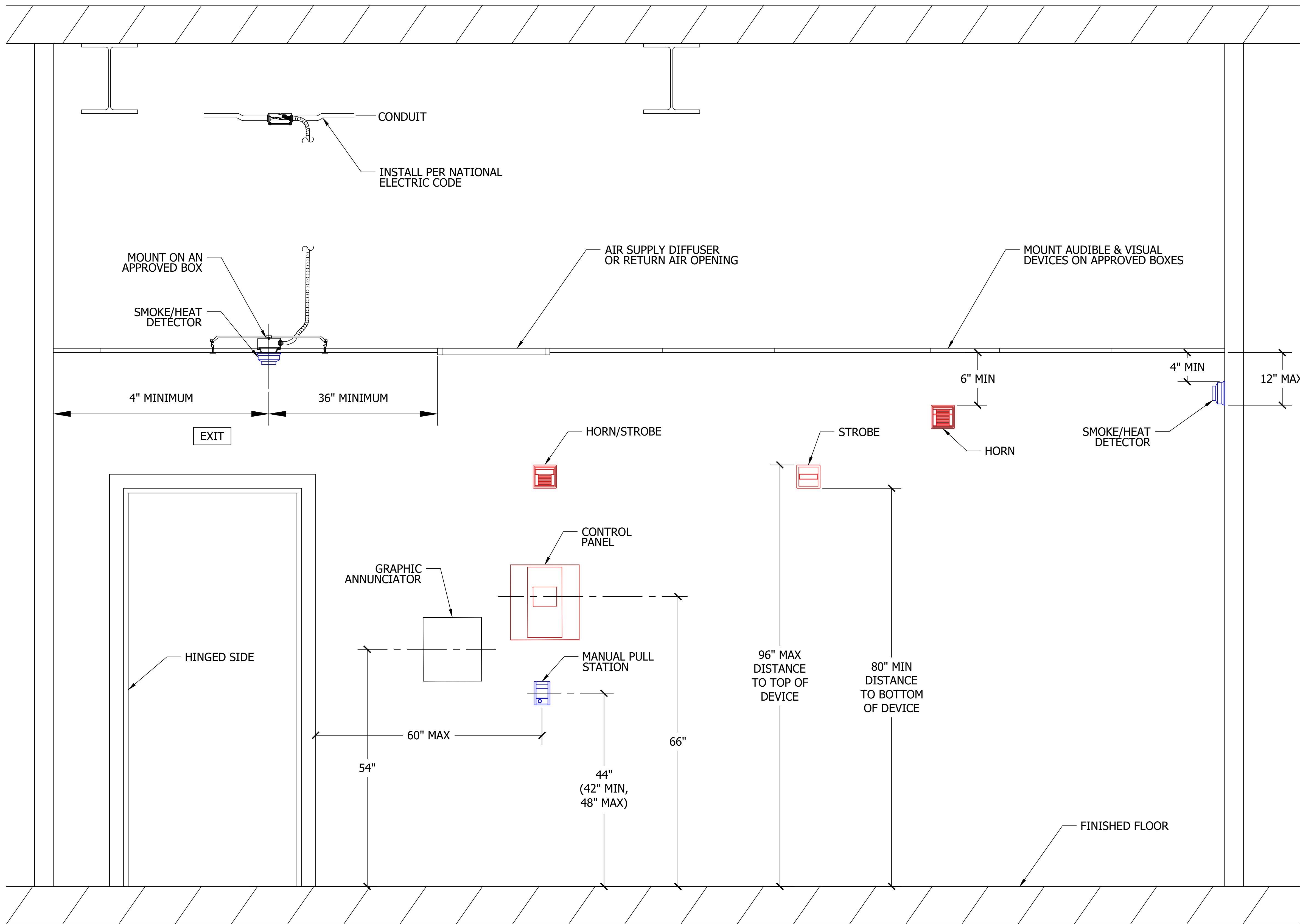
Froula Alarm Systems, Inc.
861 Industry Drive
Tukwila, WA 98188
206-575-1962

CHC PUYALLUP GARAGE
SEA-TAC ELECTRIC
111 W. MAIN, PUYALLUP, WA 98371

Issued for	Rev.	Date
ISSUED FOR SUBMITTAL	1	12/15/23



DRAWING TITLE
COVER SHEET LEGENDS & INDEX
204733-169-2324 Project No.
12/19/2023 Date
JCN Drawn By
AS NOTED Scale
FA0.00 Drawing No.



City of Puyallup Development & Permitting Services ISSUED PERMIT	
Building	Planning
Engineering	Public Works
Fire	Traffic

1 TYPICAL DEVICE MOUNTING REQUIREMENTS
Scale: 1" = 1'-0"

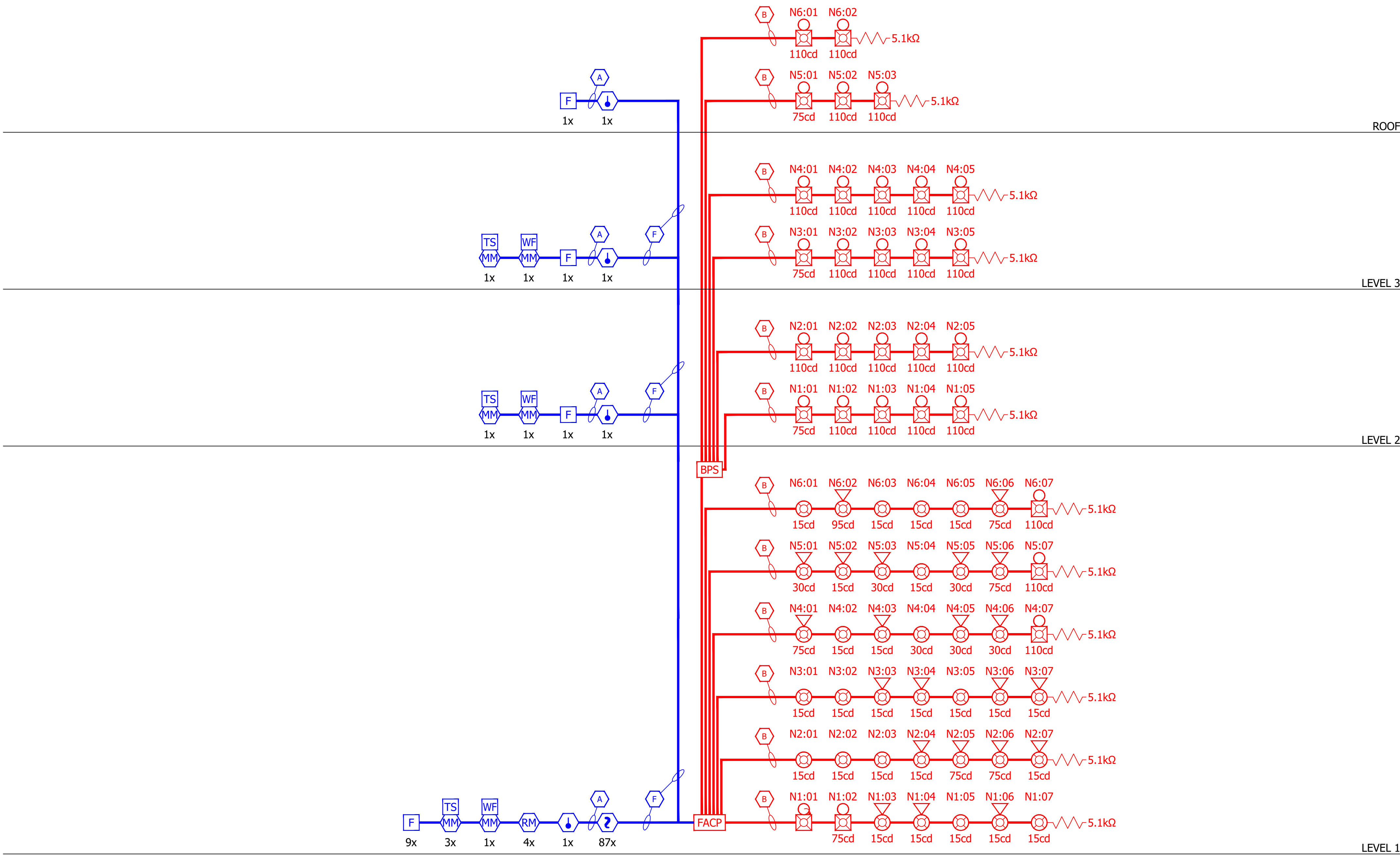
Issued for	Rev.	Date
ISSUED FOR SUBMITTAL	1	12/15/23



DRAWING TITLE	
TYPICAL DEVICE MOUNTING REQUIREMENTS	
204733-169-2324	Project No.
12/19/2023	Date
JCN	Drawn By
AS NOTED	Scale
FA0.02	Drawing No.

FACP Battery Load & Back-up Calculation				FACP			
FACP #:		FACP					
Location:		Sprinkler Riser Rm 103					
FACP Type:		IPA-4000					
Item	Qty.	Part#:	Description:	Each Standby	Each Alarm	Total Standby	Total Alarm
1		RA-6500R	LCD Remote Annunciator	0.0200	0.0250	0.0000	0.0000
2	1	PAD100-NAC	Notification Appliance Circuit	0.0002	0.0002	0.0002	0.0002
3	86	PAD200-PD	Intelligent Photo Electric Smoke Detector	0.0003	0.1400	0.0258	12.0400
4	5	PAD100-HD	Intelligent Heat Detector	0.0003	0.1400	0.0015	0.7000
5		PAD100-DUCTR	Addressable Duct Detector	0.0005	0.0005	0.0000	0.0000
6	12	PAD100-PSDA	Addressable Pull Station	0.0002	0.0002	0.0024	0.0024
7	8	PAD100-MIM	Addressable Single Input Module	0.0002	0.0002	0.0019	0.0019
8	4	PAD100-CROI	One Relay One Input Module	0.0002	0.0002	0.0010	0.0010
9	1		NAC Output#1	0.0000	0.6410	0.0000	0.6410
10	1		NAC Output#2	0.0000	0.5510	0.0000	0.5510
11	1		NAC Output#3	0.0000	0.4070	0.0000	0.4070
12	1		NAC Output#4	0.0000	0.6190	0.0000	0.6190
13	1		NAC Output#5	0.0000	0.6460	0.0000	0.6460
14	1		NAC Output#6	0.0000	0.5930	0.0000	0.5930
15						0.0000	0.0000
16						0.0000	0.0000
17						0.0000	0.0000
18						0.0000	0.0000
19						0.0000	0.0000
20						0.0000	0.0000
21						0.0000	0.0000
22						0.0000	0.0000
23						0.0000	0.0000
24						0.0000	0.0000
25						0.0000	0.0000
26						0.0000	0.0000
27						0.0000	0.0000
28						0.0000	0.0000
29						0.0000	0.0000
30						0.0000	0.0000
31						0.0000	0.0000
32						0.0000	0.0000
33						0.0000	0.0000
34						0.0000	0.0000
35						0.0000	0.0000
36						0.0000	0.0000
37						0.0000	0.0000
38						0.0000	0.0000
39						0.0000	0.0000
40						0.0000	0.0000
BATTERY LOAD CALC for FACP:				Total Current Draw's		0.0328	16.2025
Hours Standby		24		Total Amp Hours Required (AH):		0.8	
Minutes Alarm		5		Total Amp Minutes Required (AH):		1.4	
				Minimum Battery Size Needed (AH):		2.1	
Backup Generator?		No		Spare Battery Capacity Required		25%	
Voice Evacuation?		No		Actual Battery Size Required (AH):		2.7	
Military?		No					
MAXIMUM CHARGER CAPACITY IS: 56.055 AH				Total AH Rated Batteries Supplied: = 5.0			

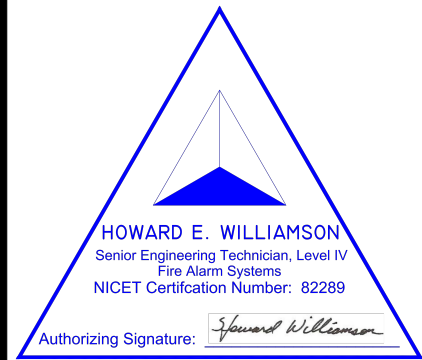
NAC Circuit Load, Voltage Drop & Battery Load Calculations										FACP			
APS Name:		FACP				Circuit Identifiers:					Total Qty		
Location:		Sprinkler Riser Rm 103				Output #1	Output #2	Output #3	Output #4	Output #5		Output #6	Aux Power
P.S. Type:		IPA-4000				NAC Sync	NAC Sync	NAC Sync	NAC Sync	NAC Sync	NAC Sync	X-X	
Part#:		Description:				N1	N2	N3	N4	N5	N6		
PC2WL		Ceiling Horn w/ Strobe set at 15cd				0.0000	0.0710	3	2	4	1	1	11
PC2WL		Ceiling Horn w/ Strobe set at 30cd				0.0000	0.0900				2	3	5
PC2WL		Ceiling Horn w/ Strobe set at 75cd				0.0000	0.1430		2		1	1	5
PC2WL		Ceiling Horn w/ Strobe set at 95cd				0.0000	0.1650					1	1
PC2WL		Ceiling Horn w/ Strobe set at 115cd				0.0000	0.1870					1	0
SC1WL		Ceiling Strobe set at 15cd				0.0000	0.0410	2	3	3	1	4	14
SC1WL		Ceiling Strobe set at 30cd				0.0000	0.0630				1		1
SC1WL		Ceiling Strobe set at 75cd				0.0000	0.1110						0
SC1WL		Ceiling Strobe set at 95cd				0.0000	0.1340						0
SC1WL		Ceiling Strobe set at 115cd				0.0000	0.1580						0
P2RK		Wall Horn w/ Strobe set at 30cd: Weatherproof				0.0000	0.0760						0
P2RK		Wall Horn w/ Strobe set at 75cd: Weatherproof				0.0000	0.1760	1					1
P2RK		Wall Horn w/ Strobe set at 95cd: Weatherproof				0.0000	0.1950						0
P2RK		Wall Horn w/ Strobe set at 110cd: Weatherproof				0.0000	0.1210				1	1	3
P2RK		Wall Horn w/ Strobe set at 115cd: Weatherproof				0.0000	0.2180						0
PBA-2410		Electric Bell; 10"; 24VDC				0.0000	0.1700	1					0
													1
													0
													0
													0
ED-1504AQN5		Typical Door Holders				0.0150	0.0000						0
# Devices per Circuit						7	7	7	7	7	7	0	42
Total Standby Circuit Calculated Amps (3)						0.000	0.000	0.000	0.000	0.000	0.000	0.0000	0.1300
Total Alarm Circuit Calculated Amps (1)						0.641	0.551	0.407	0.619	0.646	0.593	0.0000	0.2200
Wire Gauge Used (awg)						14AWG	14AWG	14AWG	14AWG	14AWG	14AWG	14AWG	Total
Circuit Length (ft)						125	150	175	175	275	300	0	Amperage
Estimated Voltage Drop (dc)						0.42	0.43	0.37	0.56	0.92	0.93	0.00	Required
Estimated EOL Voltage (dc)						19.98	19.97	20.03	19.84	19.48	19.47	20.40	3.457
Calculated Voltage Drop %						2.0%	2.1%	1.8%	2.8%	4.5%	4.5%	0.0%	
1) Current Draw Measurement based on: UL1971, 16-33V, DC, High db & Temporal Pattern													
2) Some Outdoor/WP Devices have the same Measured Current Draw as the Indoor Devices and may not listed separately above.													
BATTERY LOAD CALC for FACP:													
Hours Standby:		24		Total Standby Current:		0.1300		Total Amp Hours Required for Standby (AH):		3.1			
Minutes Alarm:		5		Total Alarm Current:		3.6770		Total Amp Hours Required for Alarm (AH):		0.3			
								Minimum Battery Size Needed (AH):		3.4			
Backup Generator?		No		Spare Capacity Required				Spare Battery Capacity Required:		25%			
Voice Evacuation?		No		per NAC Circuit:		25%		Actual Battery Size Required (AH):		4.3			
Military?		No											
MAXIMUM CHARGER CAPACITY IS: 56.055AH										Total AH Rated Batteries Supplied: =		5.0	



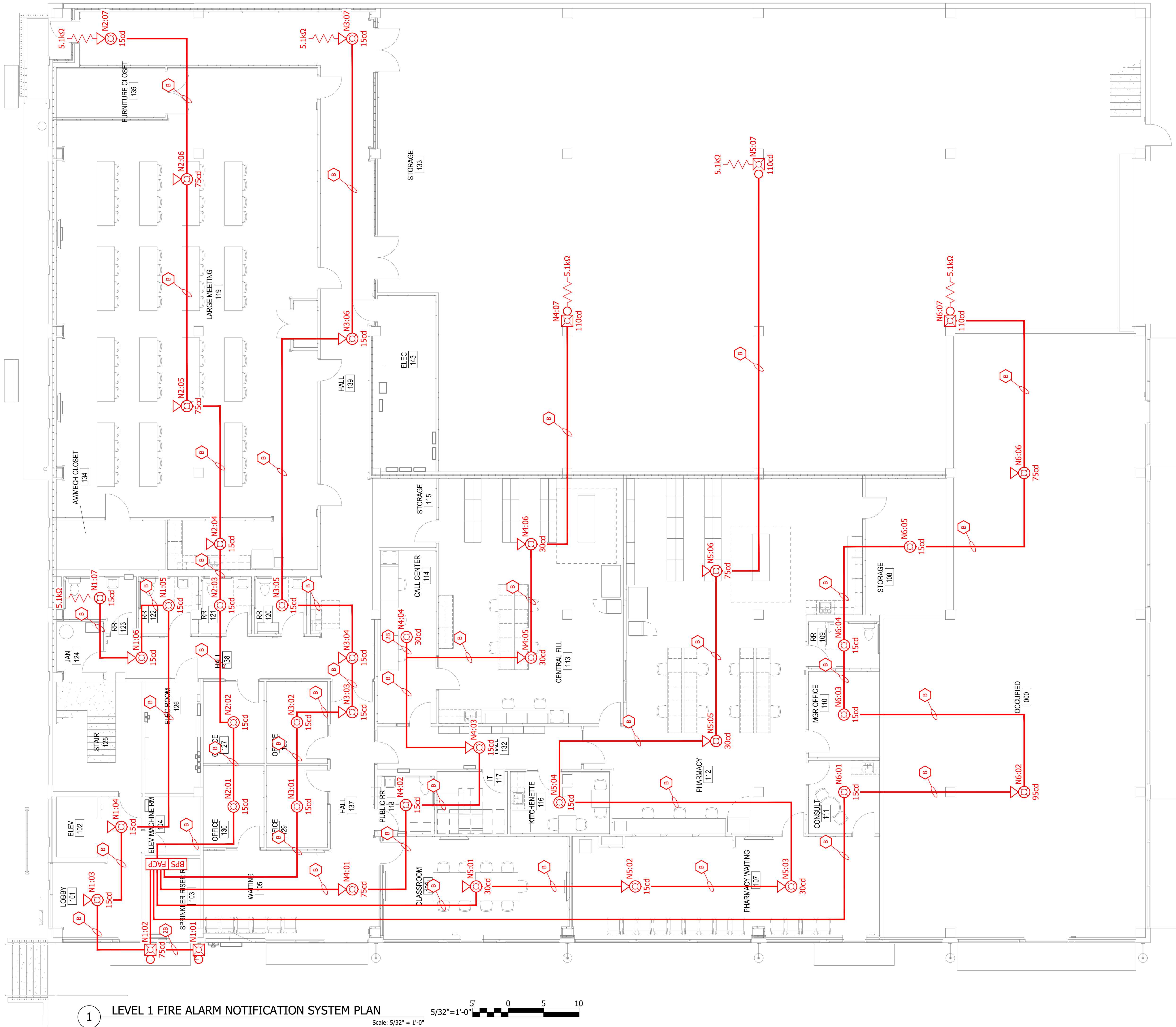
City of Puyallup
Development & Permitting Services
ISSUED PERMIT

Building	Planning
Engineering	Public Works
Fire	Traffic

Issued for	Rev.	Date
ISSUED FOR SUBMITTAL	1	12/15/23



DRAWING TITLE
FIRE ALARM SYSTEM RISER DIAGRAM
204733-169-2324 Project No.
12/19/2023 Date
JCN Drawn By
AS NOTED Scale
FA0.10 Drawing No.



SCOPE OF WORK:

1. INSTALL NEW FIRE ALARM SYSTEM FOR OWNER IMPROVEMENT.

City of Puyallup
Development & Permitting Services
ISSUED PERMIT

Building	Planning
Engineering	Public Works
Fire	Traffic

FROULA
ALARM SYSTEMS, Inc.

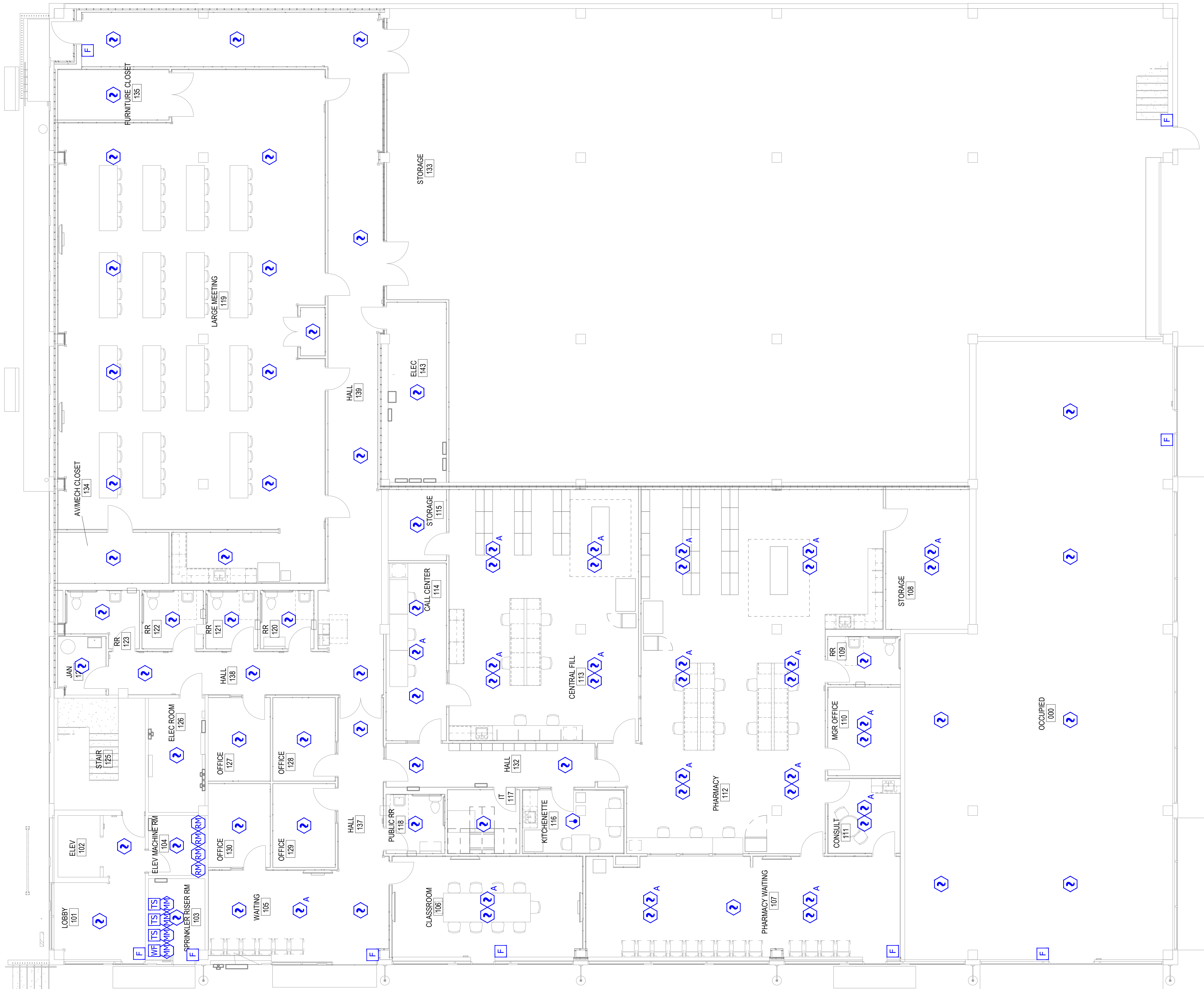
Froula Alarm Systems, Inc.
861 Industry Drive
Tukwila, WA 98188
206-575-1962

CHC PUYALLUP GARAGE
SEA-TAC ELECTRIC
111 W. MAIN, PUYALLUP, WA 98371

Issued for	Rev.	Date
ISSUED FOR SUBMITTAL	1	12/15/23

HOWARD E. WILLIAMSON
Senior Engineering Technician, License No. 12298
Fire Alarm Systems
NCEET Certification Number: 82298
Authorizing Signature: *Howard Williamson*

DRAWING TITLE	
LEVEL 1 FIRE ALARM NOTIFICATION SYSTEM PLAN	
204733-169-2324	Project No.
12/19/2023	Date
JCN	Drawn By
AS NOTED	Scale
FA2.01N	Drawing No.



SCOPE OF WORK:

1. INSTALL NEW FIRE ALARM SYSTEM FOR OWNER IMPROVEMENT.

City of Puyallup
Development & Permitting Services
ISSUED PERMIT

Building	Planning
Engineering	Public Works
Fire	Traffic

FROULA
ALARM SYSTEMS, Inc.

Froula Alarm Systems, Inc.
861 Industry Drive
Tukwila, WA 98188
206-575-1962

CHC PUYALLUP GARAGE
SEA-TAC ELECTRIC
111 W. MAIN, PUYALLUP, WA 98371

Issued for	Rev.	Date
ISSUED FOR SUBMITTAL	1	12/15/23

HOWARD E. WILLIAMSON
Senior Engineering Technician, Level IV
Fire Alarm Systems
NICET Certification Number: 82289

Authorizing Signature: *Howard Williamson*

DRAWING TITLE
LEVEL 1 FIRE ALARM INITIATION SYSTEM PLAN

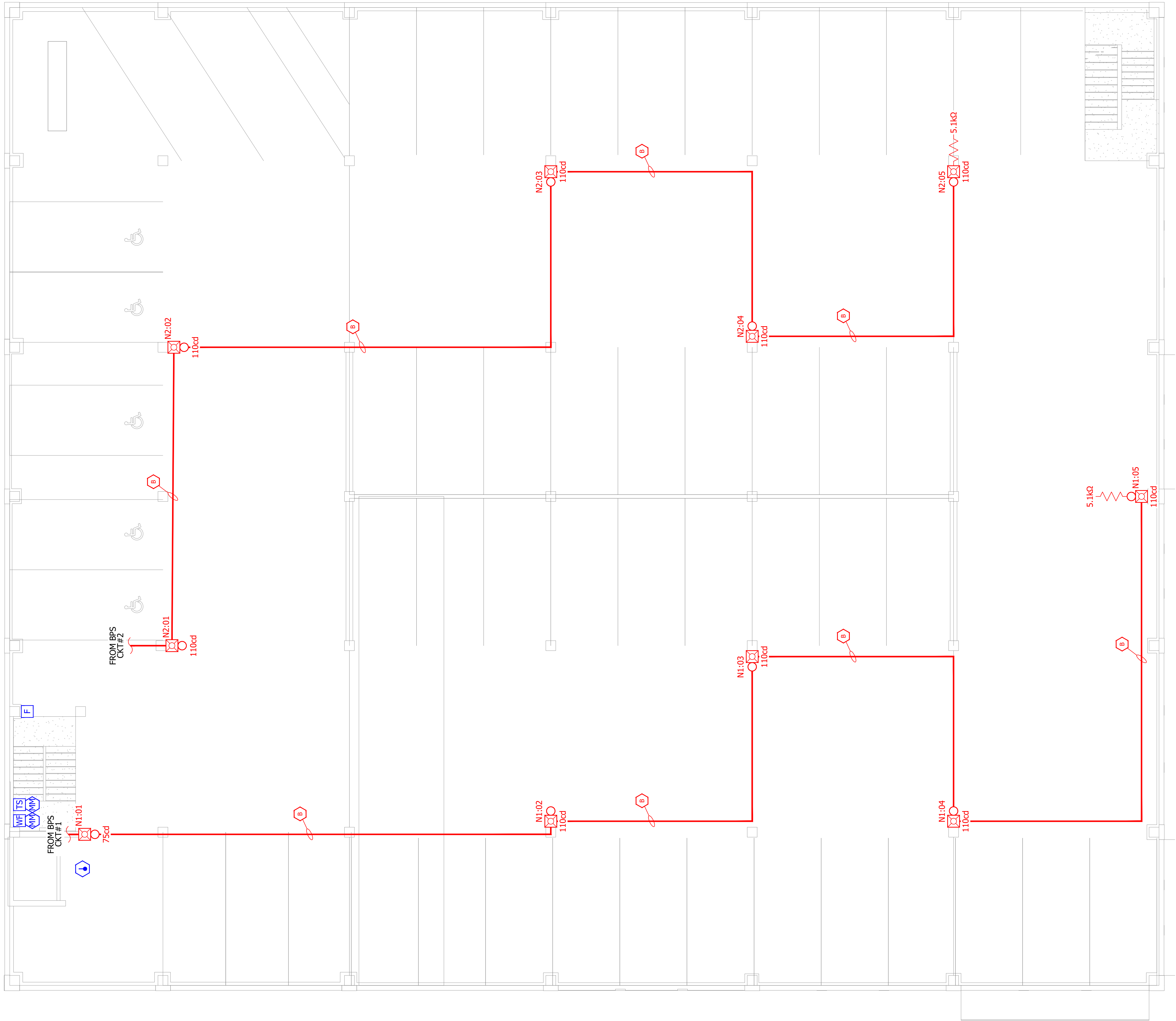
204733-169-2324
Project No.

12/19/2023
Date

JCN
Drawn By

AS NOTED
Scale

FA2.011
Drawing No.



SCOPE OF WORK:

1. INSTALL NEW FIRE ALARM SYSTEM FOR OWNER IMPROVEMENT.

City of Puyallup
Development & Permitting Services
ISSUED PERMIT

Building	Planning
Engineering	Public Works
Fire	Traffic

FROULA
ALARM SYSTEMS, Inc.

Froula Alarm Systems, Inc.
861 Industry Drive
Tukwila, WA 98188
206-575-1962

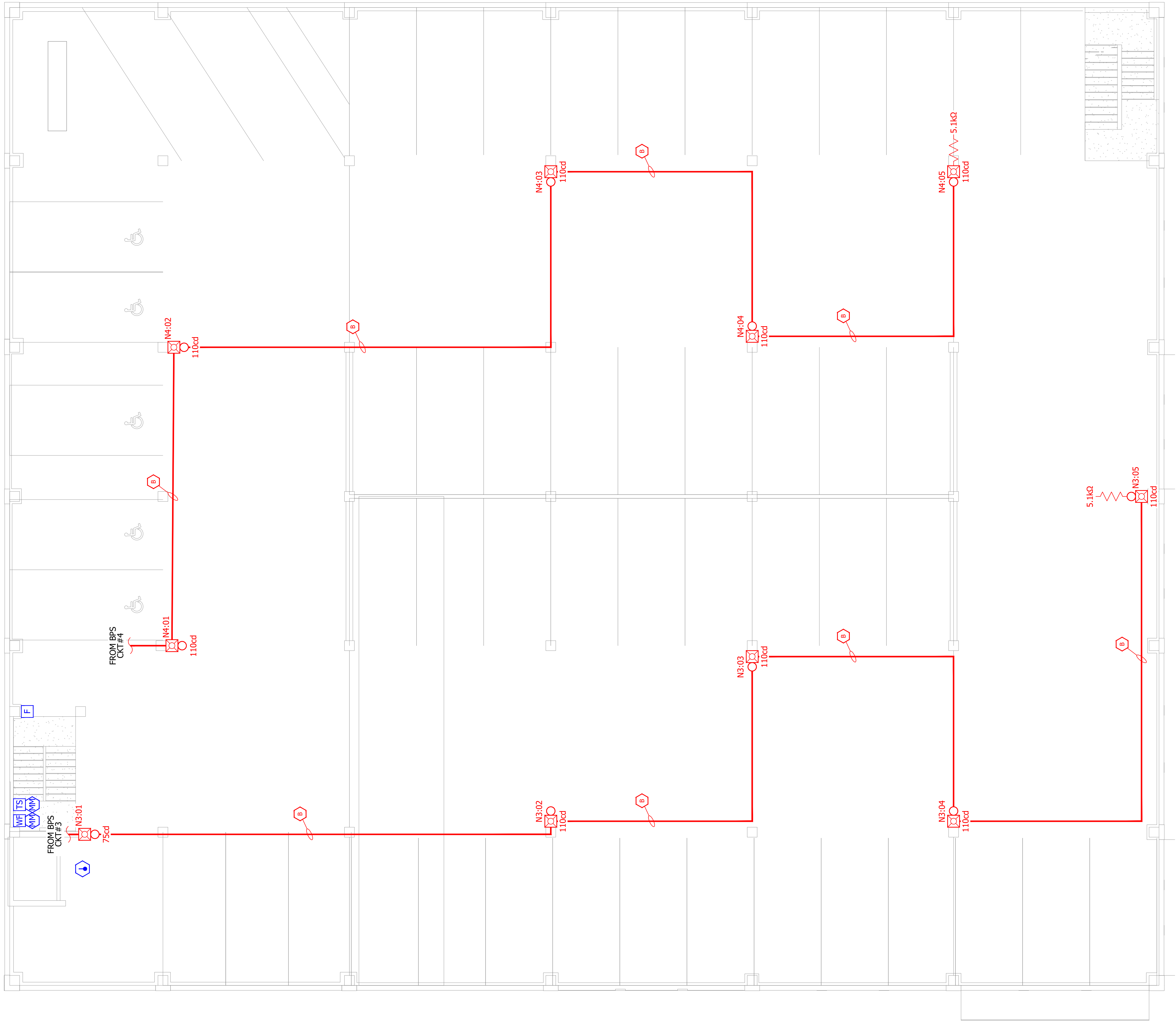
CHC PUYALLUP GARAGE
SEA-TAC ELECTRIC
111 W. MAIN, PUYALLUP, WA 98371

Issued for	Rev.	Date
ISSUED FOR SUBMITTAL	1	12/15/23

HOWARD E. WILLIAMSON
Senior Engineering Technician, Level II
Fire Alarm Systems
NICET Certification Number: 82289

Authorizing Signature: *Howard E. Williamson*

DRAWING TITLE
LEVEL 2 FIRE ALARM SYSTEM PLAN
204733-169-2324
Project No.
12/19/2023
Date
JCN
Drawn By
AS NOTED
Scale
FA2.02
Drawing No.



SCOPE OF WORK:

1. INSTALL NEW FIRE ALARM SYSTEM FOR OWNER IMPROVEMENT.

City of Puyallup Development & Permitting Services ISSUED PERMIT			
Building	Planning	Engineering	Public Works
Fire	Traffic		

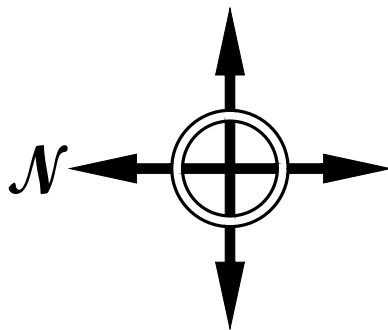


CHC PUYALLUP GARAGE
SEA-TAC ELECTRIC
111 W. MAIN, PUYALLUP, WA 98371

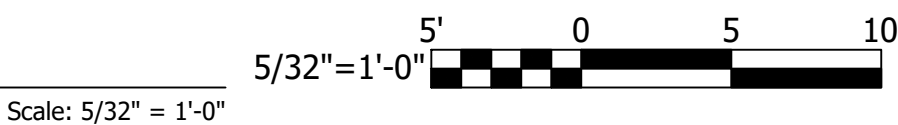
Issued for	Rev.	Date
ISSUED FOR SUBMITTAL	1	12/15/23

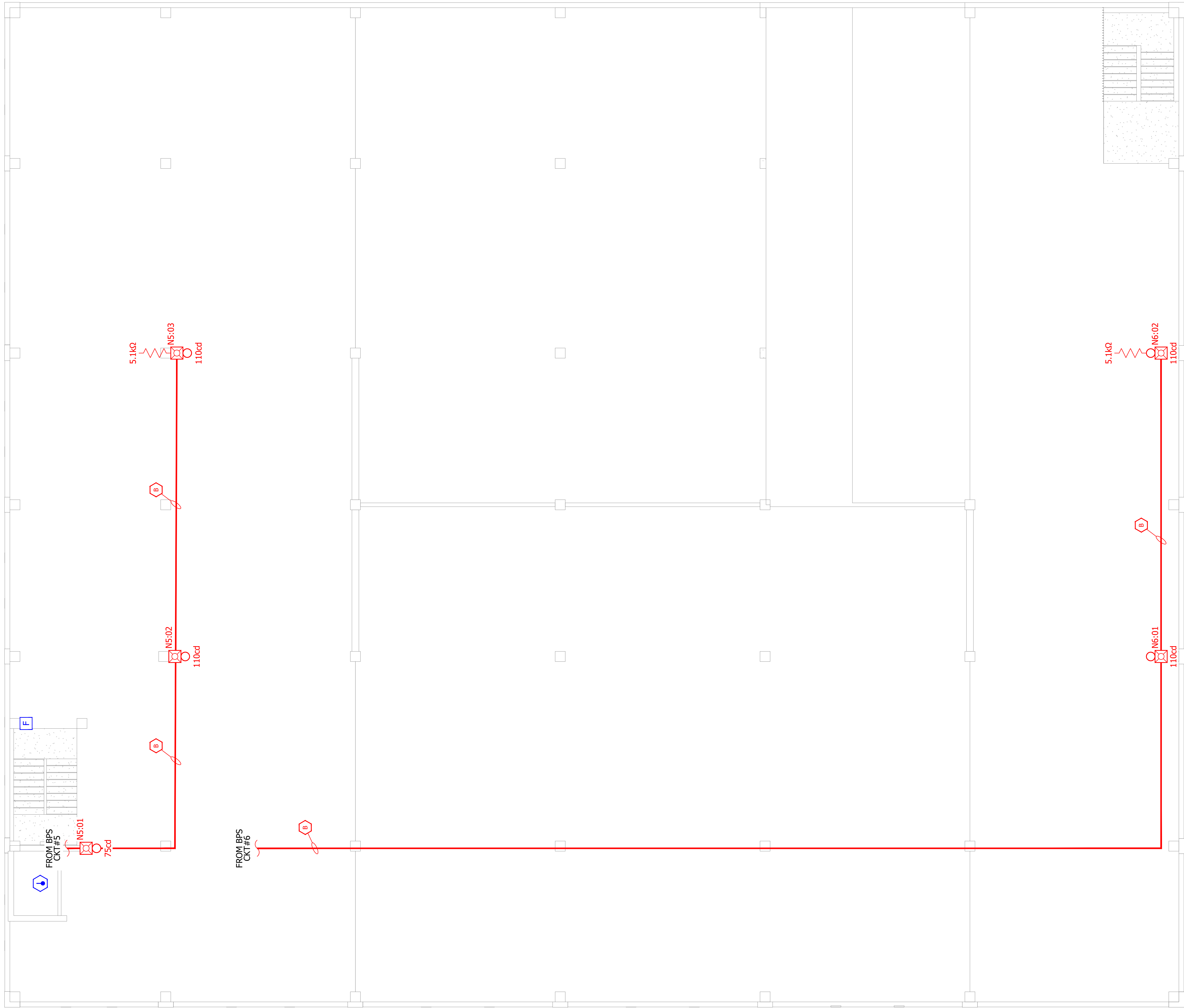


DRAWING TITLE	
LEVEL 3 FIRE ALARM SYSTEM PLAN	
204733-169-2324	Project No.
12/19/2023	Date
JCN	Drawn By
AS NOTED	Scale
FA2.03	Drawing No.



1 LEVEL 3 FIRE ALARM SYSTEM PLAN





SCOPE OF WORK:

1. INSTALL NEW FIRE ALARM SYSTEM FOR OWNER IMPROVEMENT.



Froula Alarm Systems, Inc.
861 Industry Drive
Tukwila, WA 98188
206-575-1962

CHC PUYALLUP GARAGE
SEA-TAC ELECTRIC
111 W. MAIN, PUYALLUP, WA 98371

City of Puyallup
Development & Permitting Services
ISSUED PERMIT

Building	Planning
Engineering	Public Works
Fire	Traffic

Issued for	Rev.	Date
ISSUED FOR SUBMITTAL	1	12/15/23



DRAWING TITLE
ROOF FIRE ALARM SYSTEM PLAN
204733-169-2324
Project No.
12/19/2023
Date
JCN
Drawn By
AS NOTED
Scale
FA2.04
Drawing No.

1 ROOF FIRE ALARM SYSTEM PLAN

