

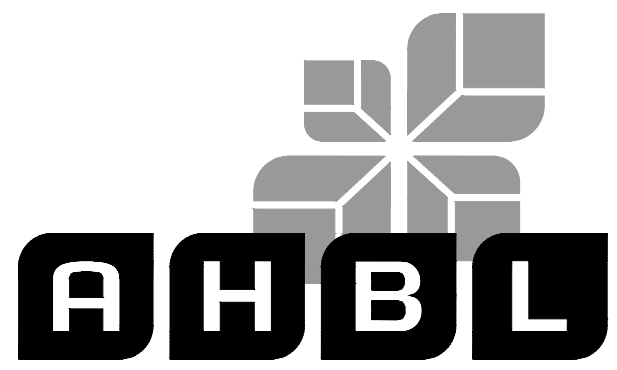
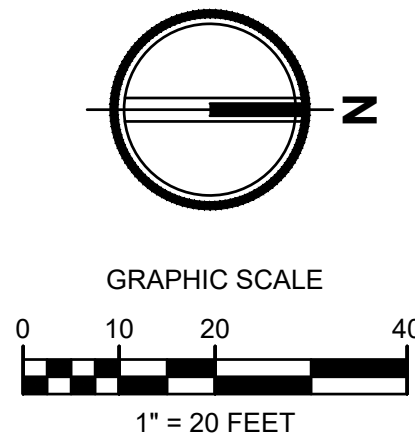
EAST TOWN CROSSING PHASE 1

SEC. 26,35/ TWP. 20 N./ RGE. 4 E., W.M.

APPROVED

BY: CITY OF PUYALLUP
DEVELOPMENT ENGINEERING
DATE:

NOTE: THIS APPROVAL IS VOID AFTER 180 DAYS FROM APPROVAL DATE. THE CITY WILL NOT BE RESPONSIBLE FOR ERRORS AND/OR OMISSIONS ON THESE PLANS. FIELD CONDITIONS MAY DICTATE CHANGES TO THESE PLANS AS DETERMINED BY THE DEVELOPMENT ENGINEERING MANAGER.



TACOMA • SEATTLE • SPOKANE • TRI-CITIES
2215 North 30th Street, Suite 300, Tacoma, WA 98403
253.383.2422 TEL 253.383.2572 FAX www.ahbl.com WEB

Project Title:

EAST TOWN CROSSING PHASE 1

Client:

ASH DEVELOPMENT

GREG HELLE

GREG.HELLE@ASHNW.COM

Project No.

2230752

Issue Set & Date:

PERMIT SUBMITTAL

11/20/2023

NOTICE: ALTERATION OF THIS DOCUMENT SHALL INVALIDATE THE PROFESSIONAL SEAL AND SIGNATURE. PUBLICATION OF THIS DOCUMENT DOES NOT REMOVE FROM RESERVE COPYRIGHT RIGHTS TO THE DRAWING OR PREVENT OTHERS FROM USING THE DRAWING FOR ANY OTHER PROJECT.

FIRE PROTECTION NOTES

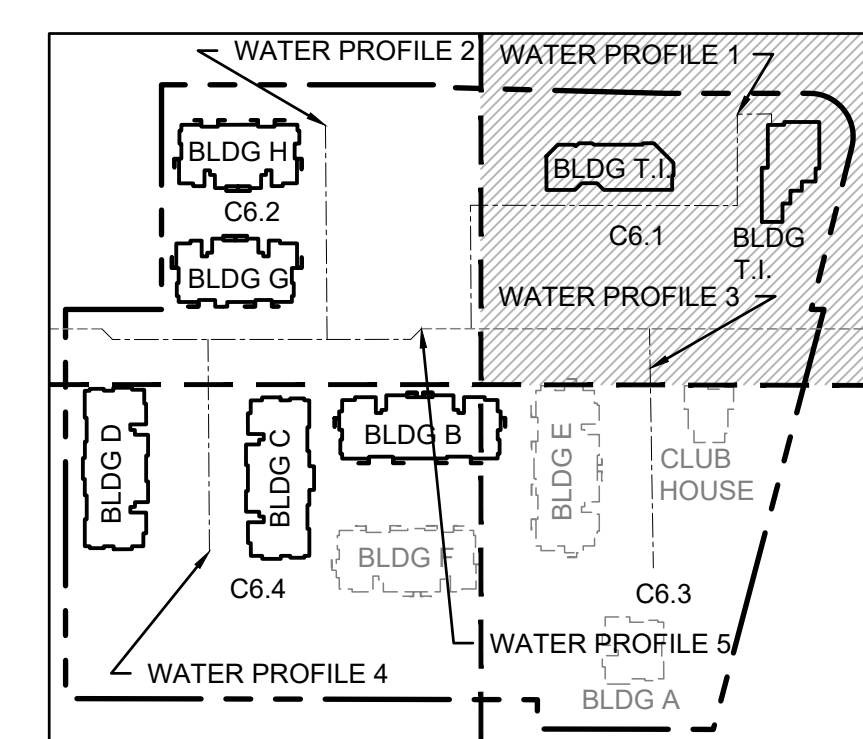
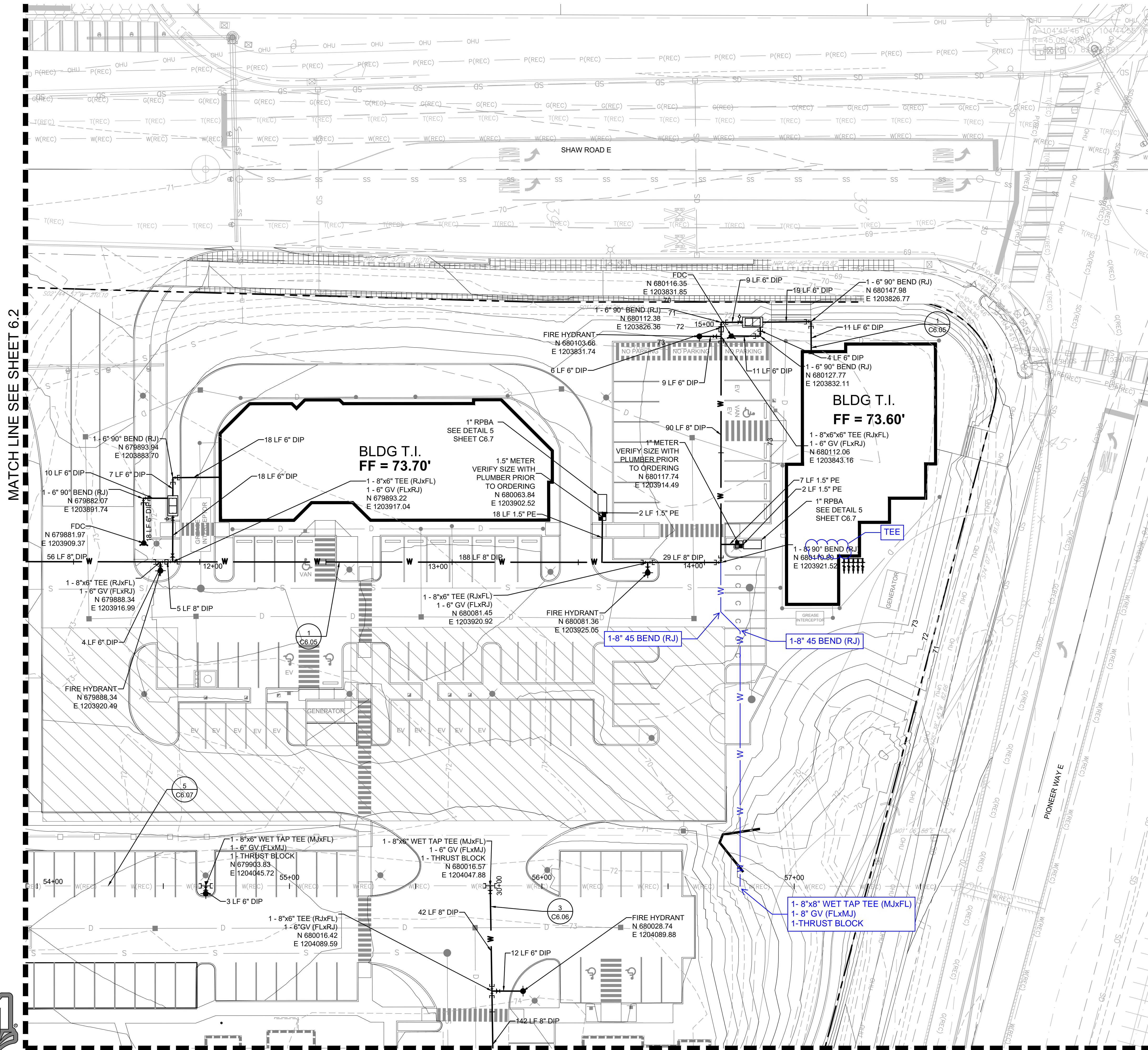
THE FIRE PROTECTION SYSTEM INCLUDING MATERIALS, SIZING, AND CONFIGURATION IS SUBJECT TO A CONTRACTOR PROVIDED DESIGN BY A FIRE PROTECTION ENGINEER, AND AS SUCH, THE FINAL DESIGN OF THE FIRE PROTECTION SYSTEM MAY DEVIATE FROM THE SYSTEM SHOWN. THE FIRE PROTECTION SYSTEM AS SHOWN FROM THE MAIN LINE TO THE CONNECTION AT THE BUILDING SPRINKLER IS INTENDED FOR LOCATION OF THE FIRE HYDRANTS AND FIRE DEPARTMENT CONNECTION ONLY. CONTRACTOR'S BID SHALL REFLECT THE CONDITIONS OF THE FIRE PROTECTION ENGINEER'S DESIGN. CONTRACTOR SHALL COMPLY WITH ALL NATIONAL FIRE PROTECTION ASSOCIATION REQUIREMENTS AS SET FORTH BY "NFPA 13", ITS AMENDMENTS, AND LOCAL REQUIREMENTS, INCLUDING BUT NOT LIMITED TO ACQUISITION OF ALL PERMITS.

FIRE SPRINKLER NOTE

WHERE THE UNDERGROUND WATER SUPPLY TEES OFF TO SERVE ONLY A FIRE SPRINKLER SYSTEM AND/OR FIRE HYDRANTS, A SEPARATE DETAILED PLAN MUST BE SUBMITTED AND APPROVED BY THE FIRE MARSHAL PRIOR TO INSTALLATION.

GENERAL NOTE

- SEE DETAILS AS NOTED
- VERTICAL THRUST BLOCKING SEE DETAILS 1 AND 2 SHEET C6.5
- WATER SERVICE CONNECTIONS SEE DETAILS 3 AND 4 SHEET C6.5
- PRIVATE WATER SERVICE LINE SEE DETAIL 5 SHEET C6.5
- FIRE HYDRANT ASSEMBLY SEE DETAIL 6 SHEET C6.5
- AIR/VACUUM VALVE SEE DETAIL 1 SHEET C6.6
- DOUBLE DETECTOR CHECK VALVE ASSEMBLY INSTALLATION SEE DETAIL 2 AND 3 SHEET C6.6
- FIRE DEPARTMENT CONNECTION (FDC) SEE DETAIL 4 SHEET C6.6
- POST INDICATOR VALVE SEE DETAIL 5 ON SHEET C6.6
- HORIZONTAL THRUST BLOCKING SEE DETAIL 6 SHEET C6.6
- WATER VALVES AND MAINS SEE DETAIL 1 ON SHEET C6.7
- VALVE MARKER POST SEE DETAIL 2 SHEET C6.7
- WATER MAIN CROSSING OTHER UTILITIES SEE DETAILS 3 AND 4 SHEET C6.7



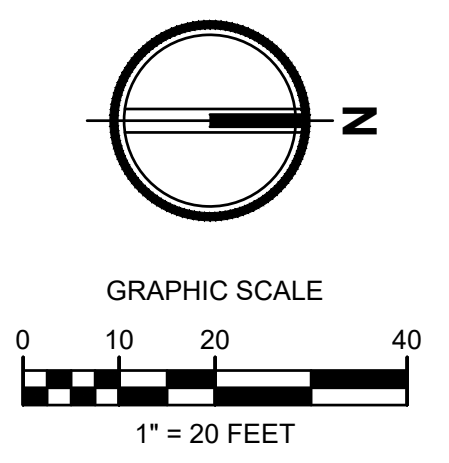
Know what's below.
Call before you dig.

EAST TOWN CROSSING PHASE 1

SEC. 26,35/ TWP. 20 N./ RGE. 4 E., W.M.

APPROVED

BY: CITY OF PUYALLUP
DEVELOPMENT ENGINEERING
DATE:



NOTE: THIS APPROVAL IS VOID AFTER 180 DAYS FROM APPROVAL DATE.
THE CITY WILL NOT BE RESPONSIBLE FOR ERRORS AND/OR OMISSIONS ON THESE PLANS.
FIELD CONDITIONS MAY DICTATE CHANGES TO THESE PLANS AS DETERMINED BY THE DEVELOPMENT ENGINEERING MANAGER.



2215 North 30th Street, Suite 300, Tacoma, WA 98403
253.383.2422 TEL 253.383.2572 FAX www.ahbl.com WEB

GENERAL NOTE

- SEE DETAILS AS NOTED
- VERTICAL THRUST BLOCKING SEE DETAILS 1 AND 2 SHEET C6.5
- WATER SERVICE CONNECTIONS SEE DETAILS 3 AND 4 SHEET C6.5
- PRIVATE WATER SERVICE LINE SEE DETAIL 5 SHEET C6.5
- FIRE HYDRANT ASSEMBLY SEE DETAIL 6 SHEET C6.5
- AIR/VACUUM VALVE SEE DETAIL 1 SHEET C6.6
- DOUBLE DETECTOR CHECK VALVE ASSEMBLY INSTALLATION SEE DETAIL 2 AND 3 SHEET C6.6
- FIRE DEPARTMENT CONNECTION (FDC) SEE DETAIL 4 SHEET C6.6
- POST INDICATOR VALVE SEE DETAIL 5 ON SHEET C6.6
- HORIZONTAL THRUST BLOCKING SEE DETAIL 6 SHEET C6.6
- WATER VALVES AND MAINS SEE DETAIL 1 ON SHEET C6.7
- VALVE MARKER POST SEE DETAIL 2 SHEET C6.7
- WATER MAIN CROSSING OTHER UTILITIES SEE DETAILS 3 AND 4 SHEET C6.7

Project Title:

EAST TOWN CROSSING PHASE 1

Client:
ASH DEVELOPMENT

GREG HELLE

GREG.HELLE@ASHNW.COM

Project No.

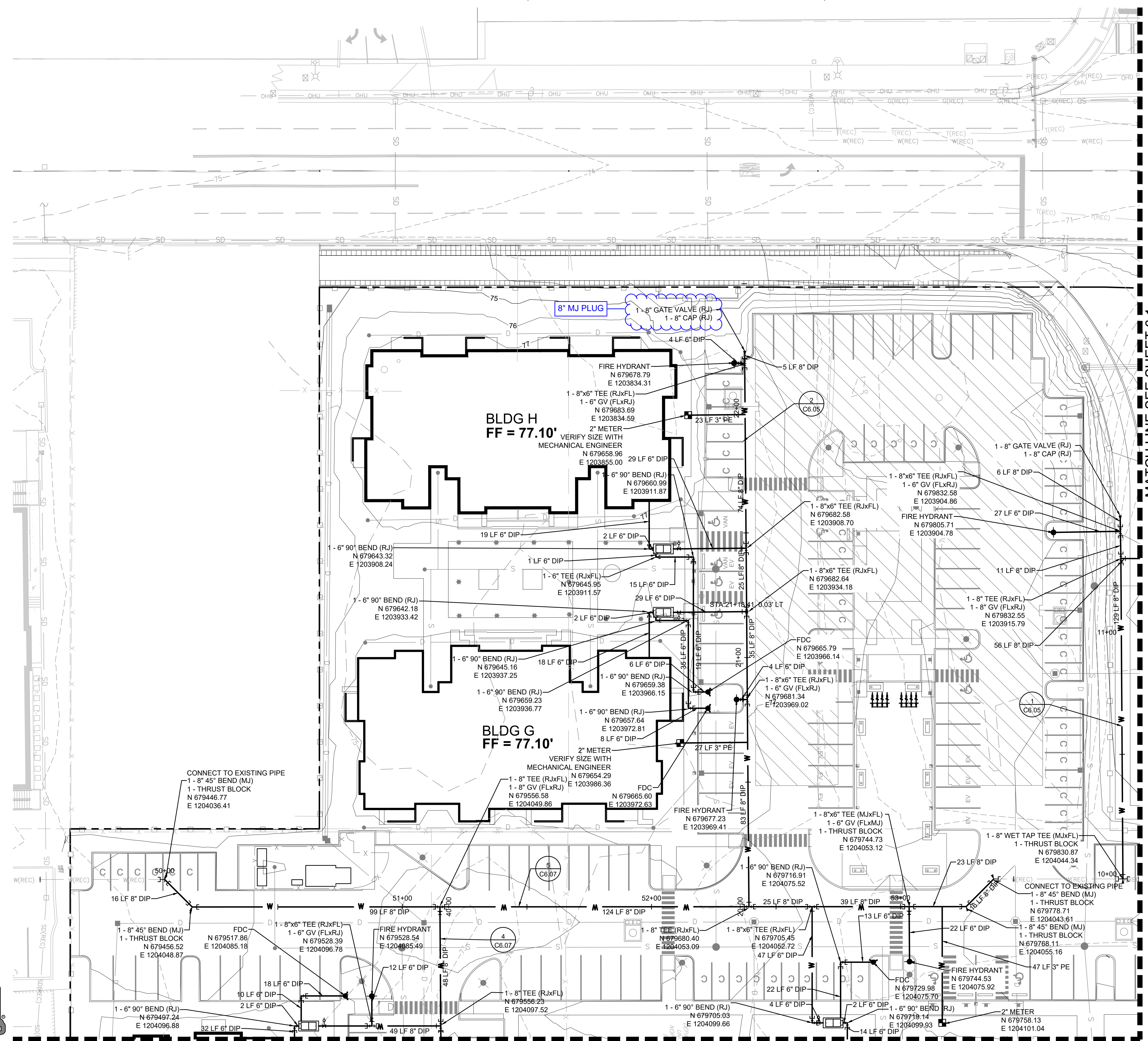
2230752

Issue Set & Date:

PERMIT SUBMITTAL

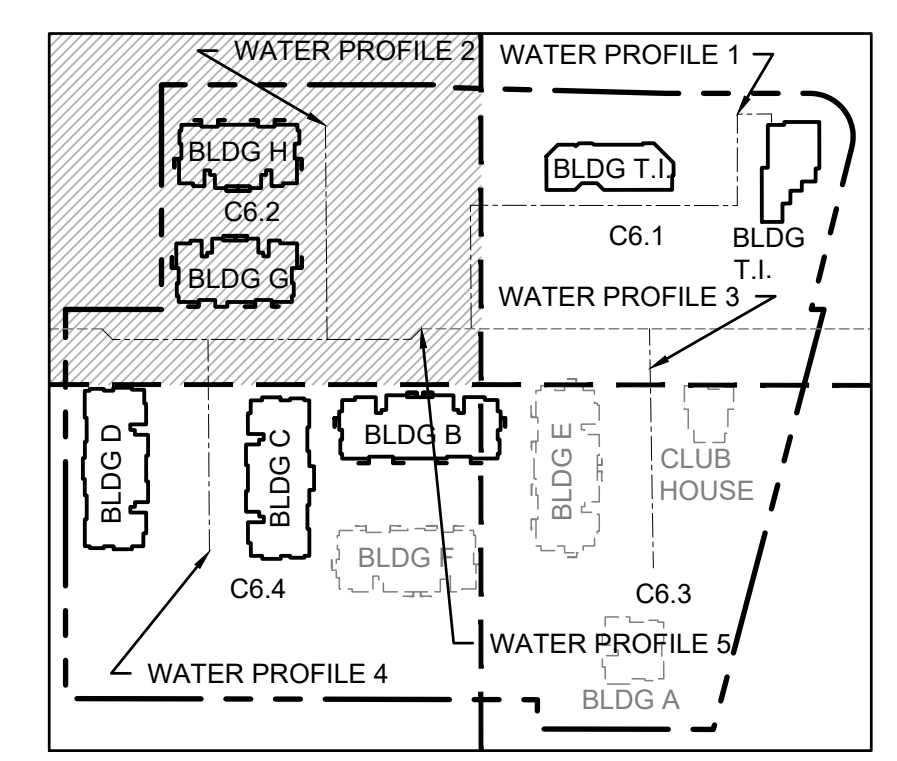
11/20/2023

NOTICE
ALTERATION OF THIS DOCUMENT SHALL INVALIDATE THE PROFESSIONAL SEAL AND SIGNATURE PURSUANT TO THE REQUIREMENTS OF THE WASHINGTON STATE BOARD OF PROFESSIONAL ENGINEERS AND SURVEYORS. THIS DOCUMENT IS NOT TO BE USED FOR ANY OTHER PROJECT.



MATCH LINE SEE SHEET 6.1

MATCH LINE SEE SHEET 6.4



Revisions:

Sheet Title:

WATER PLAN SW

Designed by: CW Drawn by: SK Checked by: JI

Sheet No.

C6.02

54 of 63 Sheets



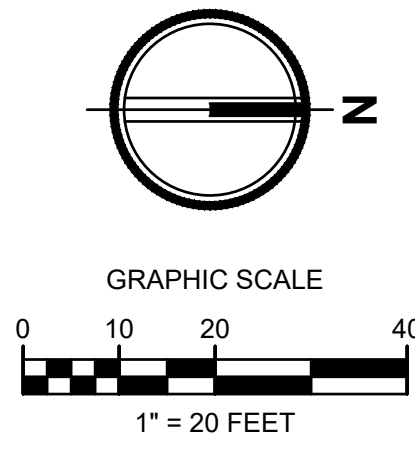
Know what's below.
Call before you dig.

EAST TOWN CROSSING PHASE 1

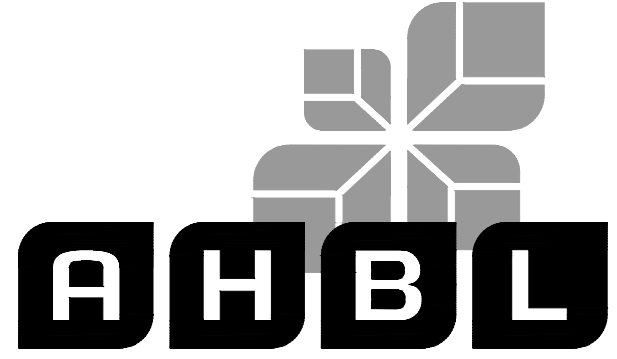
SEC. 26,35/ TWP. 20 N./ RGE. 4 E., W.M.

APPROVED

BY: CITY OF PUYALLUP
DEVELOPMENT ENGINEERING
DATE:



NOTE: THIS APPROVAL IS VOID AFTER 180 DAYS FROM APPROVAL DATE. THE CITY WILL NOT BE RESPONSIBLE FOR ERRORS AND/OR OMISSIONS ON THESE PLANS. FIELD CONDITIONS MAY DICTATE CHANGES TO THESE PLANS AS DETERMINED BY THE DEVELOPMENT ENGINEERING MANAGER.



TACOMA • SEATTLE • SPOKANE • TRI-CITIES

2215 North 30th Street, Suite 300, Tacoma, WA 98403
253.383.2422 TEL. 253.383.2572 FAX www.ahbl.com WEB

Project Title:

EAST TOWN CROSSING PHASE 1

Client:

ASH DEVELOPMENT

GREG HELLE

GREG.HELLE@ASHNW.COM

Project No.

2230752

Issue Set & Date:

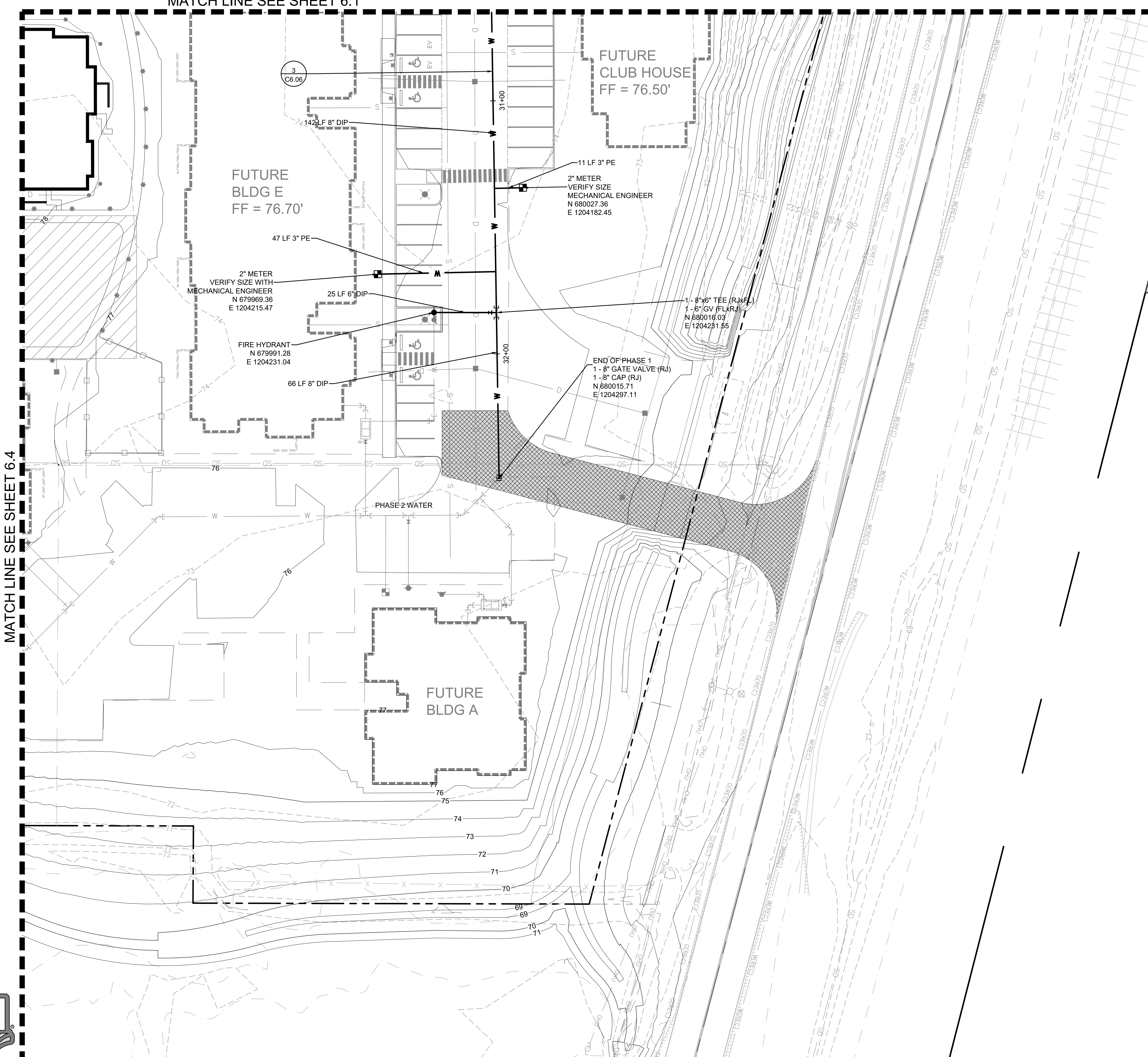
PERMIT SUBMITTAL

11/20/2023

NOTICE
A REVISION OF THIS DOCUMENT SHALL INDICATE THE PROFESSIONAL SEAL AND SIGNATURE PUBLICATION OF THE DOCUMENT DOES NOT REPRESENT THE DESIGNER'S OR ENGINEER'S RESPONSIBILITY FOR THE PROJECT. THIS DOCUMENT IS FOR THE USE ONLY FOR THE PROJECT ENTERED IN THE TITLE BLOCK AND IS NOT TO BE USED FOR OTHER PROJECTS OR ACTION TO THAT PROJECT OR FOR ANY OTHER PROJECT.

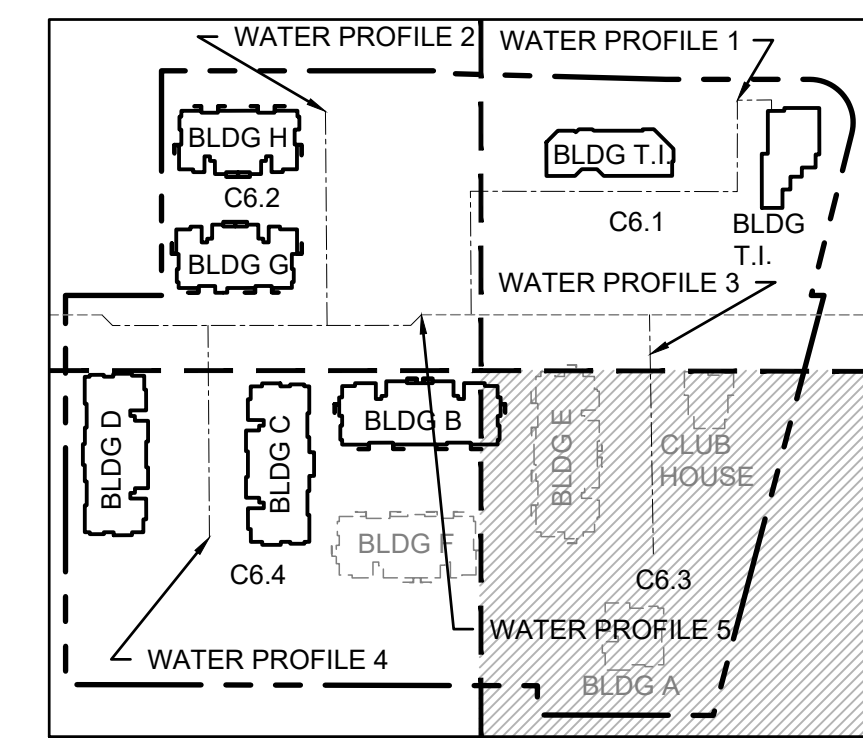
MATCH LINE SEE SHEET 6.1

MATCH LINE SEE SHEET 6.4



GENERAL NOTE

- SEE DETAILS AS NOTED
- VERTICAL THRUST BLOCKING SEE DETAILS 1 AND 2 SHEET C6.5
- WATER SERVICE CONNECTIONS SEE DETAILS 3 AND 4 SHEET C6.5
- PRIVATE WATER SERVICE LINE SEE DETAIL 5 SHEET C6.5
- FIRE HYDRANT ASSEMBLY SEE DETAIL 6 SHEET C6.5
- AIR/VACUUM VALVE SEE DETAIL 1 SHEET C6.6
- DOUBLE DETECTOR CHECK VALVE ASSEMBLY INSTALLATION SEE DETAIL 2 AND 3 SHEET C6.6
- FIRE DEPARTMENT CONNECTION (FDC) SEE DETAIL 4 SHEET C6.6
- POST INDICATOR VALVE SEE DETAIL 5 ON SHEET C6.6
- HORIZONTAL THRUST BLOCKING SEE DETAIL 6 SHEET C6.6
- WATER VALVES AND MAINS SEE DETAIL 1 ON SHEET C6.7
- VALVE MARKER POST SEE DETAIL 2 SHEET C6.7
- WATER MAIN CROSSING OTHER UTILITIES SEE DETAILS 3 AND 4 SHEET C6.7



Know what's below.
Call before you dig.

Revisions:

Sheet Title:
WATER PLAN NE

Designed by: CW
Drawn by: SK
Checked by: JI

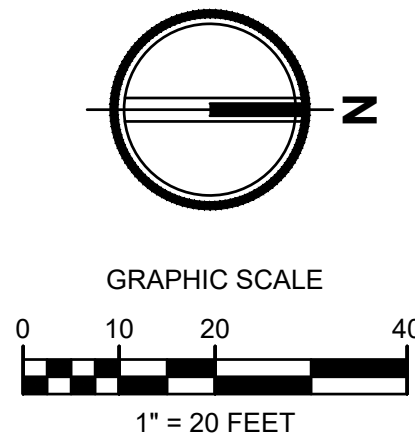
Sheet No.
C6.03

EAST TOWN CROSSING PHASE 1

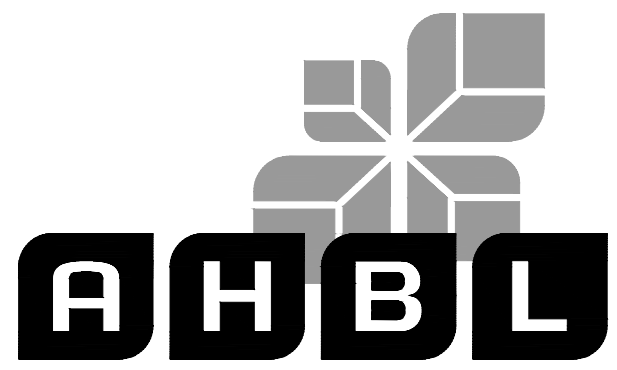
SEC. 26,35/ TWP. 20 N./ RGE. 4 E., W.M.

APPROVED

BY: CITY OF PUYALLUP
DEVELOPMENT ENGINEERING
DATE:



NOTE: THIS APPROVAL IS VOID AFTER 180 DAYS FROM APPROVAL DATE. THE CITY WILL NOT BE RESPONSIBLE FOR ERRORS AND/OR OMISSIONS ON THESE PLANS. FIELD CONDITIONS MAY DICTATE CHANGES TO THESE PLANS AS DETERMINED BY THE DEVELOPMENT ENGINEERING MANAGER.



TACOMA • SEATTLE • SPOKANE • TRI-CITIES

2215 North 30th Street, Suite 300, Tacoma, WA 98403
253.383.2422 TEL 253.383.2572 FAX www.ahbl.com WEB

Project Title:

EAST TOWN CROSSING PHASE 1

Client:
ASH DEVELOPMENT

GREG HELLE
GREG.HELLE@ASHNW.COM

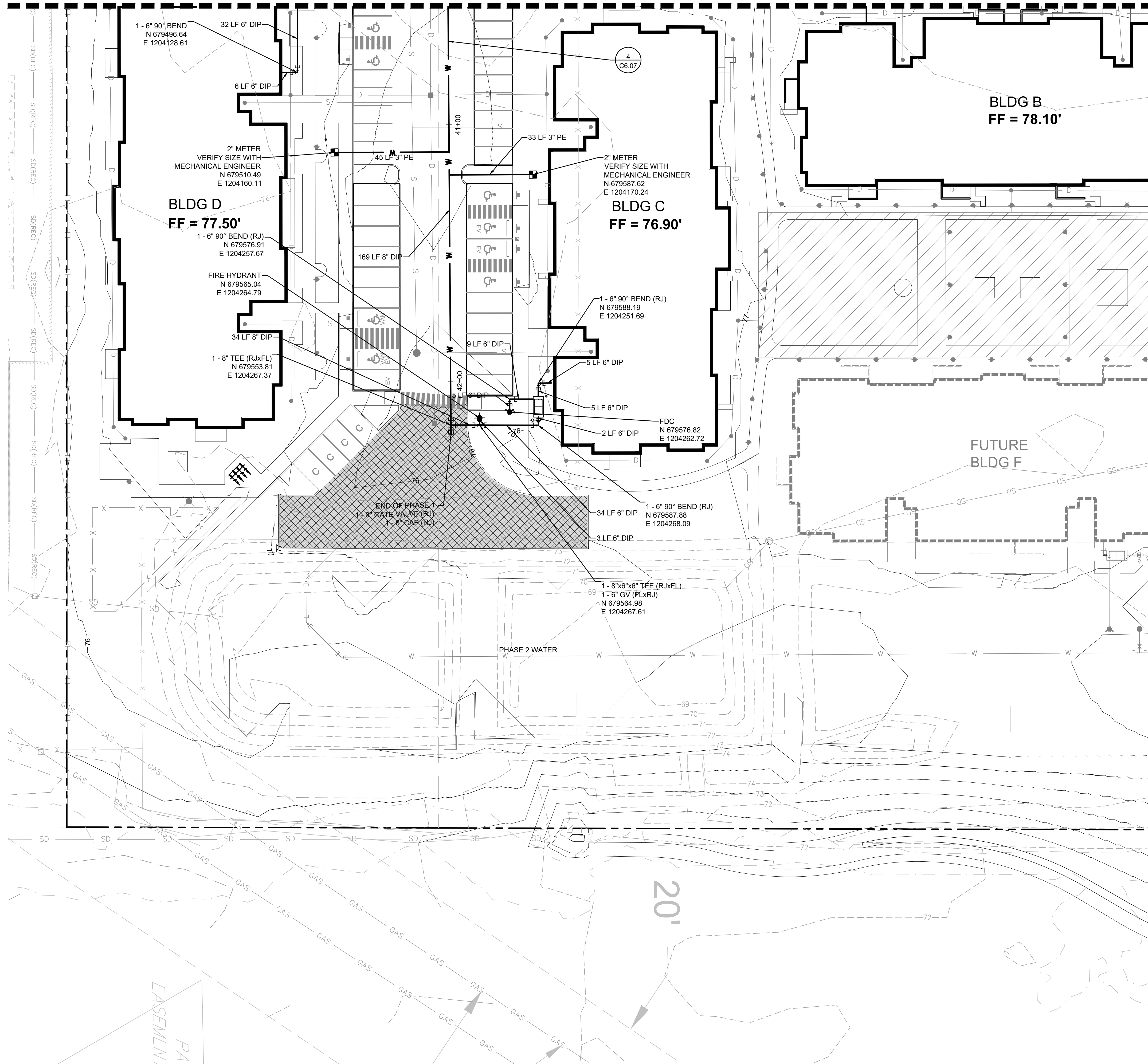
Project No.
2230752

Issue Set & Date:
PERMIT SUBMITTAL

11/20/2023

NOTICE
A REVISION OF THIS DOCUMENT SHALL INDICATE THE PROFESSIONAL SEAL AND SIGNATURE PUBLICATION OF THE DOCUMENT DOES NOT REPRESENT THE DESIGNER'S CHECKED PROGRESS. IT IS THE DESIGNER'S OBLIGATION TO ONLY FOR THE PROJECT ENTERED IN THE TITLE BLOCK AND NOT TO BE USED FOR OTHER PROJECTS OR ACTION TO THAT PROJECT OR FOR ANY OTHER PROJECT.

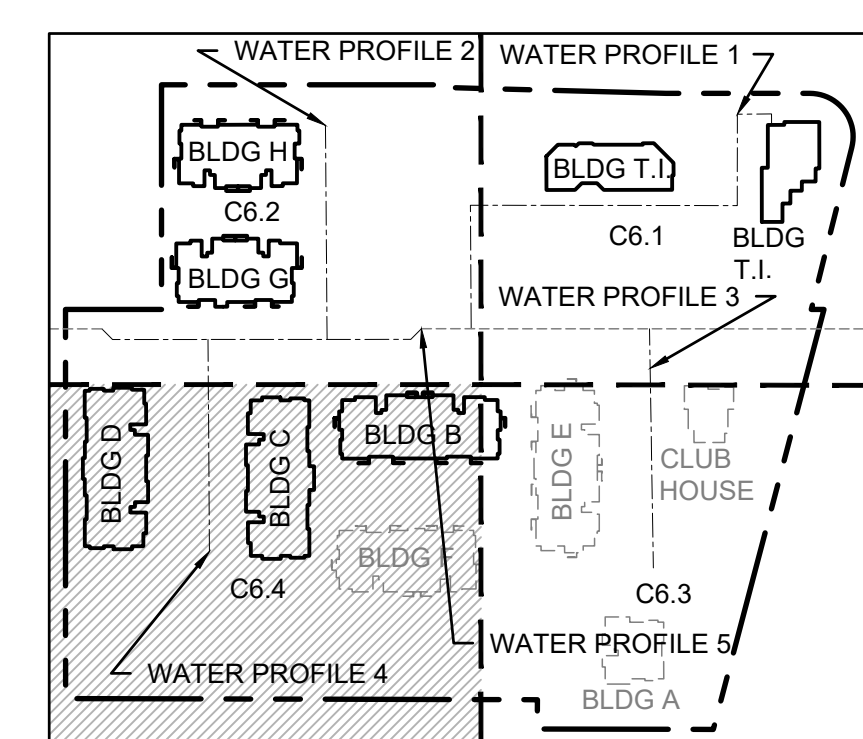
MATCH LINE SEE SHEET 6.2



MATCH LINE SEE SHEET 6.3

GENERAL NOTE

- SEE DETAILS AS NOTED
- VERTICAL THRUST BLOCKING SEE DETAILS 1 AND 2 SHEET C6.5
- WATER SERVICE CONNECTIONS SEE DETAILS 3 AND 4 SHEET C6.5
- PRIVATE WATER SERVICE LINE SEE DETAIL 5 SHEET C6.5
- FIRE HYDRANT ASSEMBLY SEE DETAIL 6 SHEET C6.5
- AIR/VACUUM VALVE SEE DETAIL 1 SHEET C6.6
- DOUBLE DETECTOR CHECK VALVE ASSEMBLY INSTALLATION SEE DETAIL 2 AND 3 SHEET C6.6
- FIRE DEPARTMENT CONNECTION (FDC) SEE DETAIL 4 SHEET C6.6
- POST INDICATOR VALVE SEE DETAIL 5 ON SHEET C6.6
- HORIZONTAL THRUST BLOCKING SEE DETAIL 6 SHEET C6.6
- WATER VALVES AND MAINS SEE DETAIL 1 ON SHEET C6.7
- VALVE MARKER POST SEE DETAIL 2 SHEET C6.7
- WATER MAIN CROSSING OTHER UTILITIES SEE DETAILS 3 AND 4 SHEET C6.7



Revisions:

Sheet Title:
WATER PLAN SE

Designed by: CW
Drawn by: SK
Checked by: JI

Sheet No.
C6.04