



York® Sun™ Core 3-12.5 Ton Package

PRMH20240184

Single Package R-410A Air Conditioner

Project Name: South Hill Mall-RTU-29-REV-1

Unit Model #: ZYG12E4B3AA2B111A3

Quantity: 1 Tag #: 1 In Stock-Today

System: ZYG12E4B3AA2B111A3

Cooling Performance

Total gross capacity	135.2 MBH
Sensible gross capacity	96.4 MBH
Total net capacity	125.8 MBH
Sensible net capacity	87.0 MBH
Efficiency (at ARI)	12.00 EER
Integrated eff. (at ARI)	14.60 IEER
Ambient DB temp.	84.9 °F
Entering DB temp.	80.0 °F
Entering WB temp.	67.0 °F
Evap Coil Leaving DB temp.	57.7 °F
Evap Coil Leaving WB temp.	56.2 °F
Unit Leaving DB temp.	59.9 °F
Unit Leaving WB temp.	57.0 °F
Leaving air temp dew point	55.20 °F
Power input (w/o blower)	7.49 kW
Sound power	87 dB(a)

Refrigerant

Refrigerant type	R-410A
Sys1	6 lb 2 oz
Sys2	6 lb 10 oz

Gas Heating Performance

Entering DB temp.	60 °F
Heating output capacity (Max)	176.0 MBH
Supply air	4000 cfm
Heating input capacity (Max)	220 MBH
Leaving DB temp.	100.7 °F
Air temp. rise	40.7 °F
SSE	80.0 %
Stages	2

Supply Air Blower Performance

Supply air	4000 cfm
Ext. static pressure	0.6 IWG
Addl. Unit Losses (Options/Accessories)	0.66 IWG
Blower speed	1001 rpm
Max BHP of Motor (including service factor)	3.70 HP
Duct location	Bottom
Motor rating	3.70 HP
Actual required BHP	2.97 HP
Power input	2.76 kW
Elevation	433 ft
Drive type	BELT

Electrical Data

Power supply	460-3-60
Unit min circuit ampacity	23.6 A
Unit min over-current protection	25 A
Unit max over-current protection	30 A

Dimensions & Weight

Hgt 55 in	Len 87 in	Wth 62 in
Weight with factory installed options		1078 lb

Clearances

Right	18 in	Front	48 in	Rear	36 in
Top	72 in	Bottom	1 in	Left	12 in

Note: Please refer to the tech guide for listed maximum static pressures



UNIT + CURB = 1350 LBS



10 Ton

- All units are manufactured at an ISO 9001 registered facility and each rooftop is completely computer-run tested prior to shipment.

Unit Features

- Two Stage Cooling
- 220 MBH Two Stage Input Medium Heat Aluminized Gas
- Unit Cabinet Constructed of Powder Painted Steel, Certified At 750 Hours Salt Spray Test (ASTM B-117 Standards)
- Either supply and/or return can be field converted from vertical to horizontal configuration without cutting panels.
- Full perimeter base rails with built in rigging capabilities
- Scroll Compressors
- Dry Bulb Economizer (Downflow only) (with Barometric Relief) with Economizer Fault Detection & Diagnostic (Meets ASHRAE 90.1-2013, IECC 2015, California Title 24, AMCA 511)
- Medium Static Belt Drive Blower
- Solid Core Liquid Line Filter Driers
- Unit Ships with 2" Throwaway Filters
- Replacement Filters: 4 - (20" x 20"). Unit accepts 2" or 4" wide filters.
- Single Point Power Connection
- Short Circuit Current: 5kA RMS Symmetrical
- Microchannel All Aluminum Condenser Coil, Copper tube/Aluminum fin Evaporator Coil

Standard Unit Controller

- Smart Equipment Control Board
- On-Board Diagnostic and Fault Code display
- An Integrated Low-Ambient Control, Anti-Short Cycle Protection, Lead-Lag, Fan On and Fan off Delays, Low Voltage Protection, Allows all units to operate in the cooling mode down to 0 °F outdoor ambient without additional components or intervention.
- Safety Monitoring - Monitors the high and low-pressure switches, the freezestats, the gas valve, if applicable, and the temperature limit switch on gas and electric heat units. The unit control board will alarm on ignition failures, safety lockouts and repeated limit switch trips.

BAS Controller

- Smart Equipment Controller including Discharge Air, Return Air, and Outdoor Air Temperature Sensors.

Warranty

- One (1) Year Limited Warranty on the Complete Unit
- Five (5) Year Warranty - Compressors
- Ten (10) Year Warranty - Aluminized Steel Tubular Heat Exchangers



York® Sun™ Core 3-12.5 Ton Package

Single Package R-410A Air Conditioner

Project Name: **South Hill Mall-RTU-29-REV-1**

Unit Model #: **ZYG12E4B3AA2B111A3**

Quantity: **1** Tag #: **1** In Stock-Today

System: **ZYG12E4B3AA2B111A3**



Additional Electrical Data

Power supply	460-3-60
Unit min circuit ampacity	23.6 A
Unit max over-current protection	30 A
Min Voltage	432 V
Max Voltage	504 V
Comp #1 RLA	7.1
Comp #1 LRA	62.0
Comp #2 RLA	7.1
Comp #2 LRA	62.0
Indoor Mtr Voltage	460-3-60
Indoor Mtr FLA	4.7
Outdoor Mtr Qty	1
Outdoor Fan Voltage	460-3-60
OD Fan Mtr FLA (ea.)	2.9
Power Ex Mtr Qty (if applicable)	2
Powered Ex Voltage(if applicable)	460-3-60
Power Ex Mtr FLA (ea) (if applicable)	0.5
Combustion Mtr Qty	1
Combustion Motor Voltage	208/230-1-60
Combustion Mtr FLA (ea)	0.08

Quote #
2432485

South Hill Mall-RTU-29

10 too

OPTIONS:
INSULATED PANELS (WHERE REQUIRED)
1" 1-1/2LB DUCT INSULATION (R VALUE 3.85)
GASKET PROVIDED WITH CURB

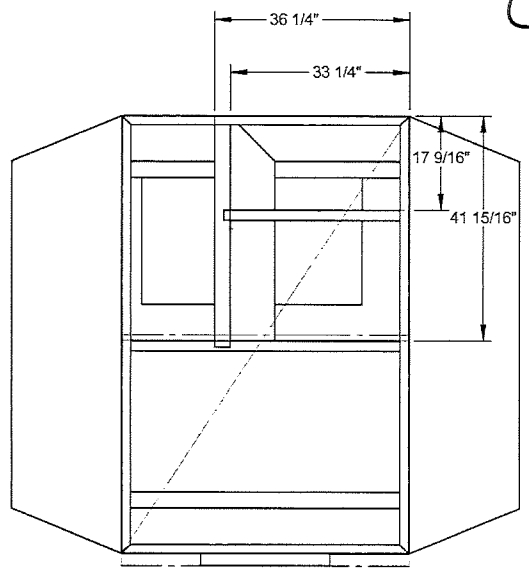
DIMENSIONED AND TOLERANCED PER ANSI Y14.5M-1982

REVISIONS			
REV.	DESCRIPTION	DATE	APPROVED
1	INITIAL DRAWING		

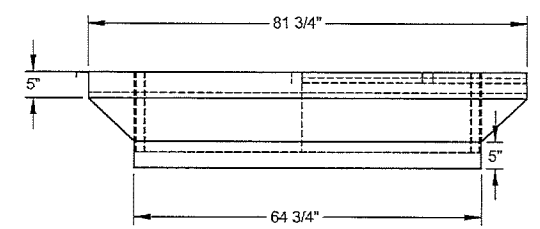
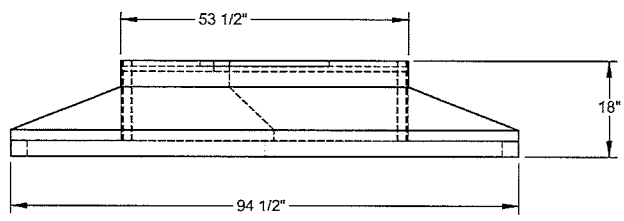
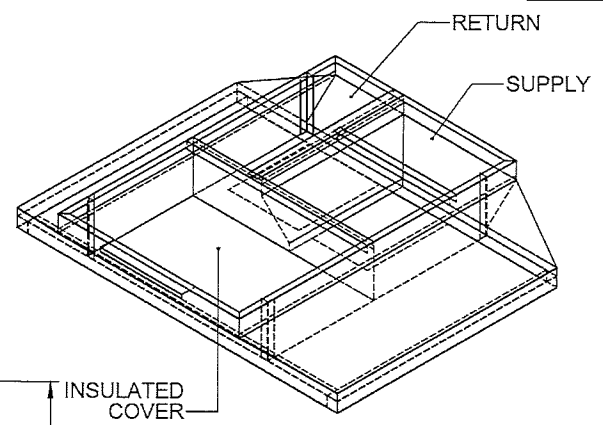
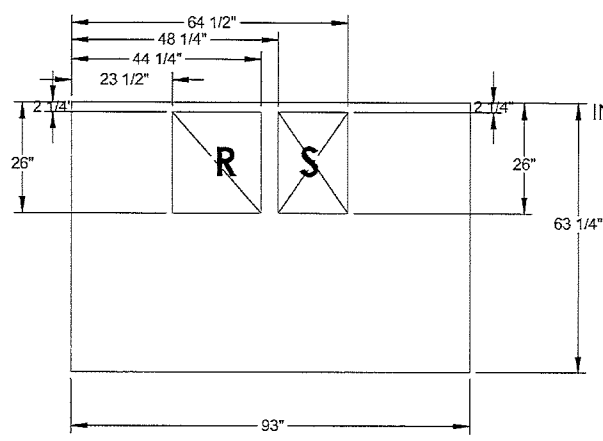
Attn: Jake
Approval: _____
RTU TAG(S): _____

City of Puyallup
Development & Permitting Services
ISSUED PERMIT

Building	Planning
Engineering	Public Works
Fire	Traffic



EXISTING CURB



Material: 18 ga. G-90 Galv Steel
Existing Curb Oversized by: 1.5 Inches
Operational Height(Raise up by):27 Inches

THIS DRAWING & THE INFORMATION CONTAINED THEREIN IS THE CONFIDENTIAL PROPRIETARY INFORMATION OF CRYSTAL DISTRIBUTION INC. & MAY NOT BE USED OR REPRODUCED WITHOUT THE APPROVAL OF CRYSTAL DISTRIBUTION, INC. ALL RIGHTS RESERVED.	APPROVALS	DATE	TITLE/FILE NAME
	DRAWN: driveworks	10/7/2022	1-5010-5105
*VERIFY EXISTING CURB OD *VERIFY SUPPLY AND RETURN OPENINGS *NOTE ANY CHANGES *CALL WITH ANY QUESTIONS *FAX BACK IF DRAWING IS OK AS IS	CHECKED:		
	DIMENSIONS ARE AS FOLLOWS: 1:00 in (25.40 mm)		
3RD ANGLE PRACTICE	CDI CRYSTAL DISTRIBUTION CONTACT US @ www.cdicurbs.com or 1-888-234-7001	APPROXIMATE CURB WEIGHT (LBS.) 272	ECO #: REV: 1
		SCALE: 1:16	SHEET: 1 OF 4