



VECTOR
Development Company

11411 NE 124th Street
Suite 190
Kirkland, WA 98034

PROJECT DATA

SITE AREA	979,449 SF
BUILDING AREA	492,051 SF
COVERAGE	50.2%
BUILDING A PARKING REQUIRED	108.3
10,000 SF OFFICE @ 1:300	33.3
224,901 SF WHSE @ 1:3000	75.0
PARKING PROVIDED	130
BUILDING B PARKING REQUIRED	116.0
10,000 SF OFFICE @ 1:300	33.3
248,102 SF WHSE @ 1:3000	82.7
PARKING PROVIDED	140
▲ 9'x10' DOCK DOOR	69
● 12'x14' GRADE ACCESS DOOR	4

REVISIONS

NO.	DATE	DESCRIPTION
2	01 31 24	PERMIT SUBMITTAL
1	10 14 22	SEPA RESUBMITTAL
D	11 01 21	DESIGN REVIEW APPLICATION
C	09 15 21	PRELIMINARY BID
B	03 19 21	SEPA APPLICATION
A	01 05 21	PRE-APPLICATION

PROFESSIONAL STAMP

Digitally signed by
Randy Brown
Date: 2024.02.01
09:12:57
-08'00'

7154 REGISTERED ARCHITECT
RANDALL LEE BROWN
STATE OF WASHINGTON

PROJECT INFORMATION

BUILDING A
Freeman Road Logistics
Puyallup, WA

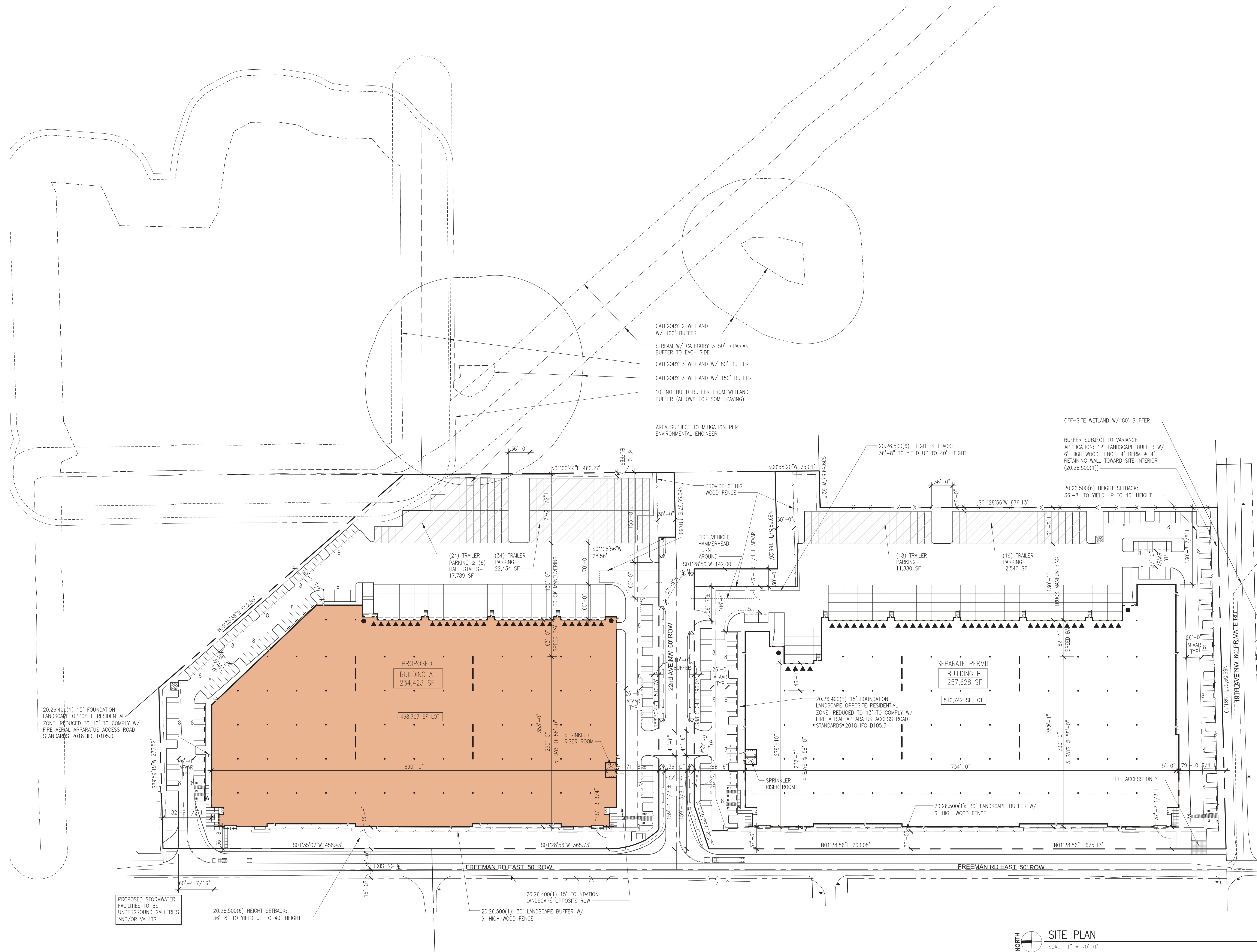
SHEET INFORMATION

RELEASE FOR: PERMIT SUBMITTAL
TITLE: SITE PLAN

DESIGNED BY: DRAWN BY: APPROVED BY:

REVIEWED BY: SHEET NO. **A1.1**

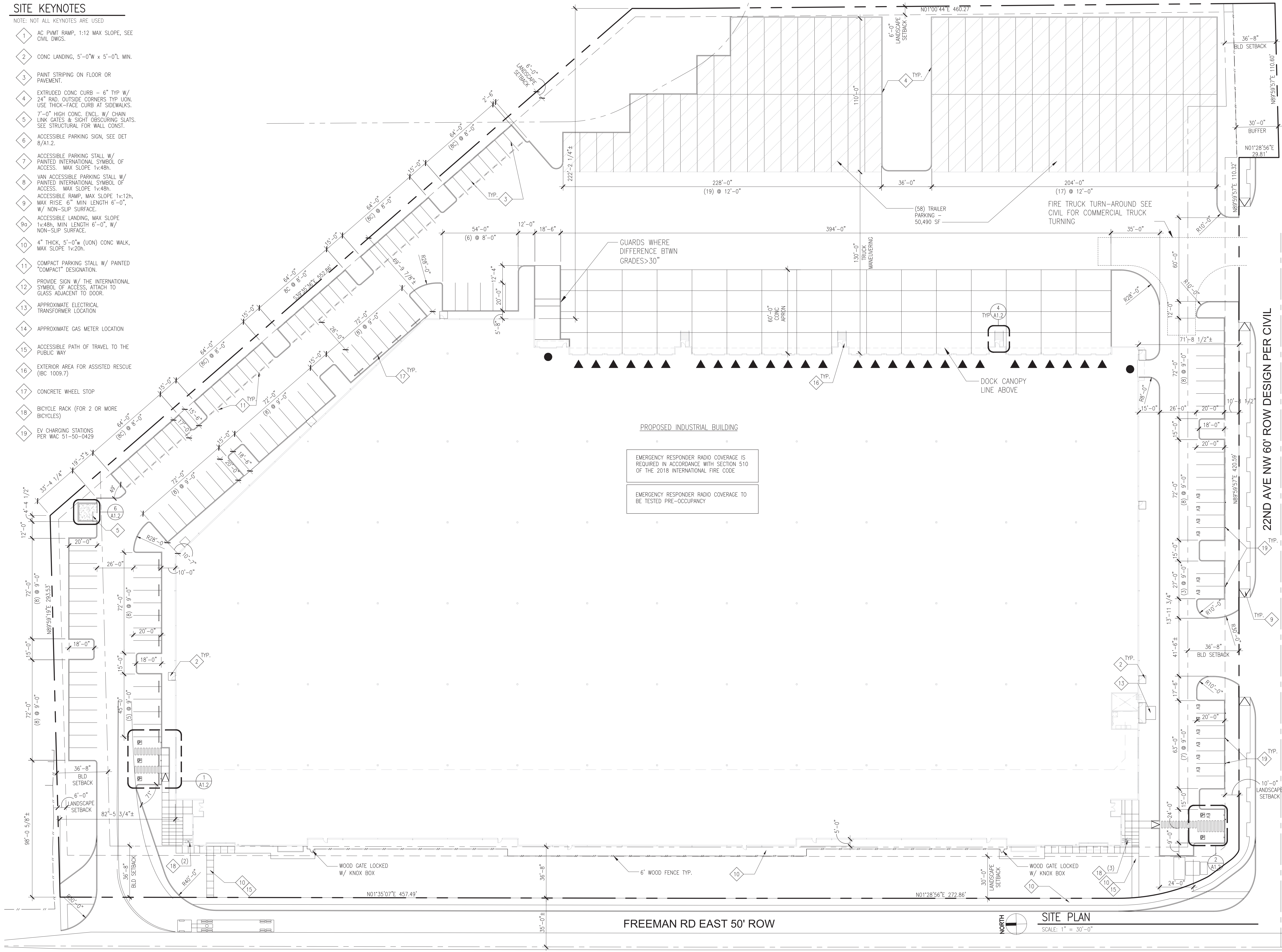
DATE: 01 05 21
PROJECT NO: 201401.13.031



SITE KEYNOTES

NOTE: NOT ALL KEYNOTES ARE USED

- 1 AC PVMT RAMP, 1:12 MAX SLOPE, SEE CIVIL DWGS.
- 2 CONC LANDING, 5'-0"W x 5'-0"L MIN.
- 3 PAINT STRIPING ON FLOOR OR PAVEMENT.
- 4 EXTRUDED CONC CURB - 6" TYP W/ 24" RAD. OUTSIDE CORNERS TYP UNON. USE THICK-FACE CURB AT SIDEWALKS.
- 5 7'-0" HIGH CONC. ENCL. W/ CHAIN LINK GATES & SIGHT OBSCURING SLATS. SEE STRUCTURAL FOR WALL CONST.
- 6 ACCESSIBLE PARKING SIGN, SEE DET 8/A1.2.
- 7 ACCESSIBLE PARKING STALL W/ PAINTED INTERNATIONAL SYMBOL OF ACCESS. MAX SLOPE 1v:48h.
- 8 VAN ACCESSIBLE PARKING STALL W/ PAINTED INTERNATIONAL SYMBOL OF ACCESS. MAX SLOPE 1v:48h.
- 9 ACCESSIBLE RAMP, MAX SLOPE 1v:12h. MAX RISE 6" MIN LENGTH 6'-0", W/ NON-SLIP SURFACE.
- 10 ACCESSIBLE LANDING, MAX SLOPE 1v:48h. MIN LENGTH 6'-0", W/ NON-SLIP SURFACE.
- 11 4" THICK 5'-0"W (UON) CONC WALK, MAX SLOPE 1v:20h.
- 12 COMPACT PARKING STALL W/ PAINTED "COMPACT" DESIGNATION.
- 13 PROVIDE SIGN W/ THE INTERNATIONAL SYMBOL OF ACCESS, ATTACH TO GLASS ADJACENT TO DOOR.
- 14 APPROXIMATE ELECTRICAL TRANSFORMER LOCATION
- 15 APPROXIMATE GAS METER LOCATION
- 16 ACCESSIBLE PATH OF TRAVEL TO THE PUBLIC WAY
- 17 EXTERIOR AREA FOR ASSISTED RESCUE (BC 1009.7)
- 18 CONCRETE WHEEL STOP
- 19 BICYCLE RACK (FOR 2 OR MORE BICYCLES)
- 20 EV CHARGING STATIONS PER WAC 51-50-0429



PROPOSED INDUSTRIAL BUILDING

EMERGENCY RESPONDER RADIO COVERAGE IS REQUIRED IN ACCORDANCE WITH SECTION 510 OF THE 2018 INTERNATIONAL FIRE CODE

EMERGENCY RESPONDER RADIO COVERAGE TO BE TESTED PRE-OCCUPANCY

SYNTHESIS PLLC
 THE FUSION OF ARCHITECTURE, DESIGN TECHNOLOGY & PEOPLE

12503 Bel-Red Road, Suite 100
 Bellevue, WA 98005
 p 425 646 1818 f 425 646 4141

VECTOR
 Development Company
 11411 NE 124th Street
 Suite 190
 Kirkland, WA 98034

REVISIONS

ISSUE NO.	DATE	ITEM
2	01 31 24	PERMIT SUBMITTAL
1	10 14 22	SEPA RESUBMITTAL
D	11 01 21	DESIGN REVIEW APPLICATION
C	09 15 21	PRELIMINARY BID
B	03 19 21	SEPA APPLICATION
A	01 05 21	PRE-APPLICATION

PROFESSIONAL STAMP

Digitally signed by
Randy Brown
 Date: 2024.02.01 09:13:10 -08'00'

7154 REGISTERED ARCHITECT
 RANDALL LEE BROWN
 STATE OF WASHINGTON

PROJECT INFORMATION

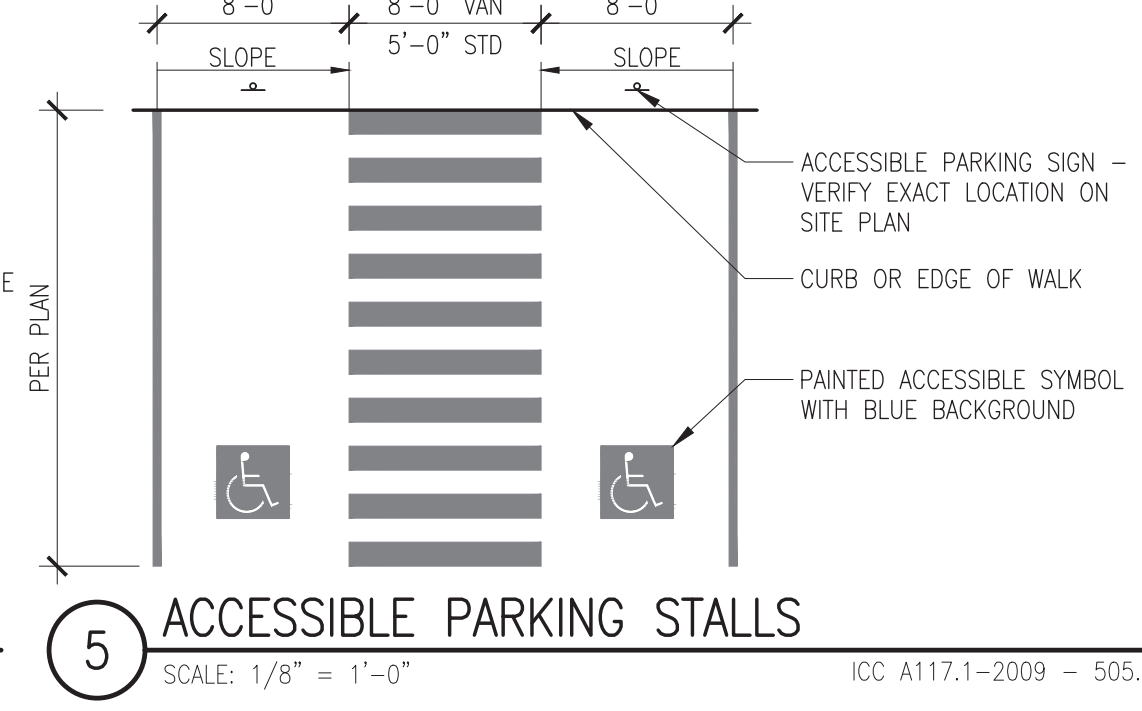
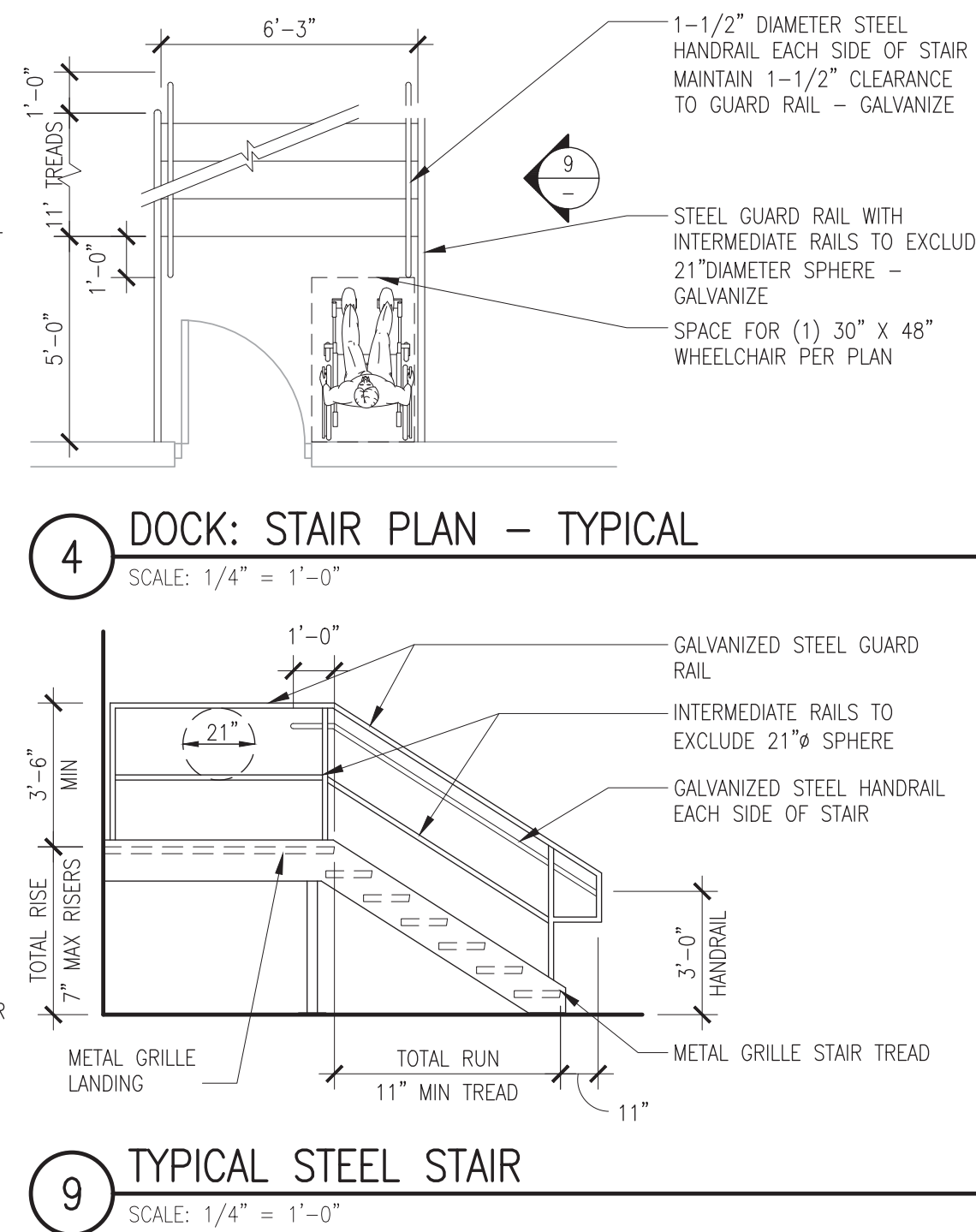
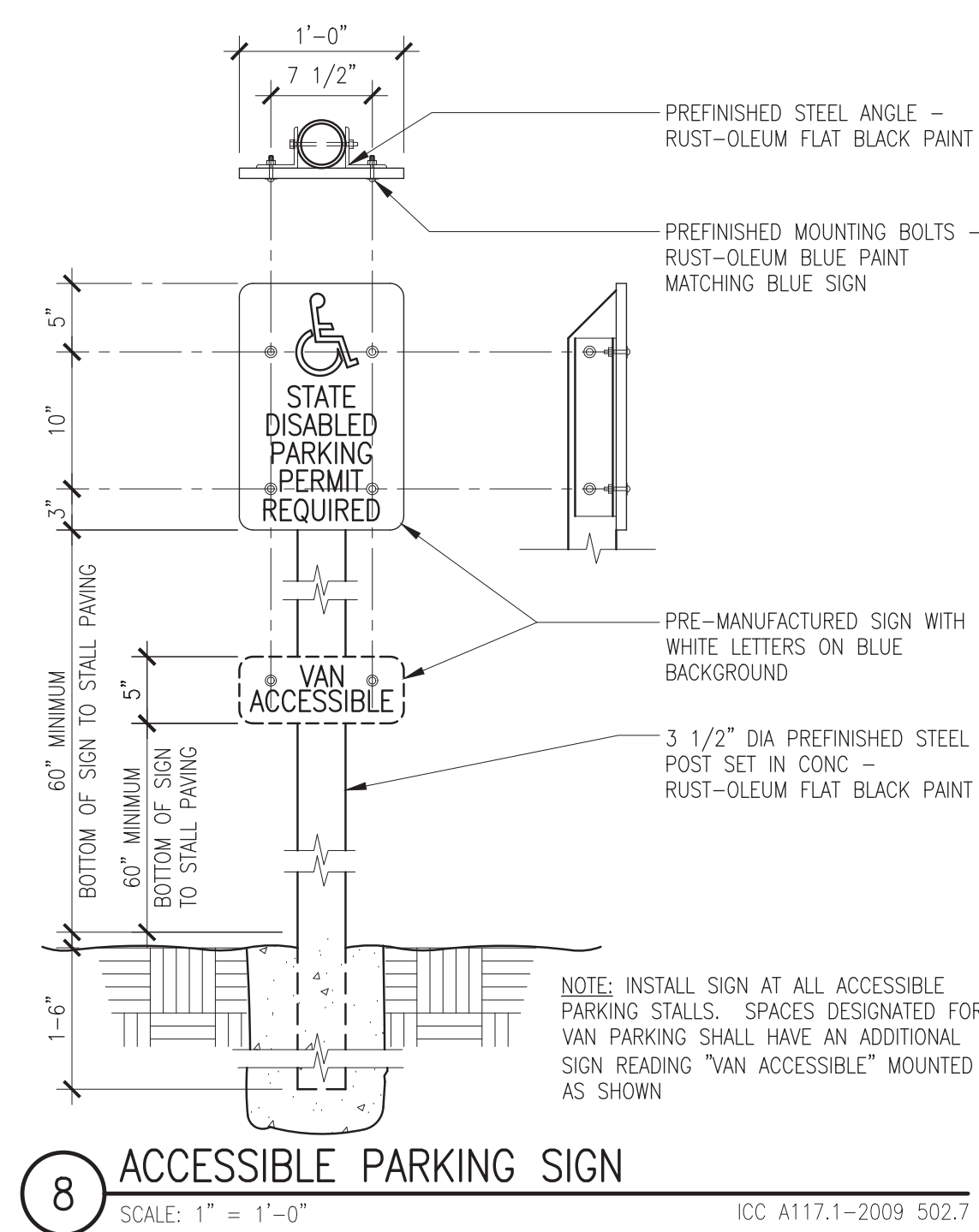
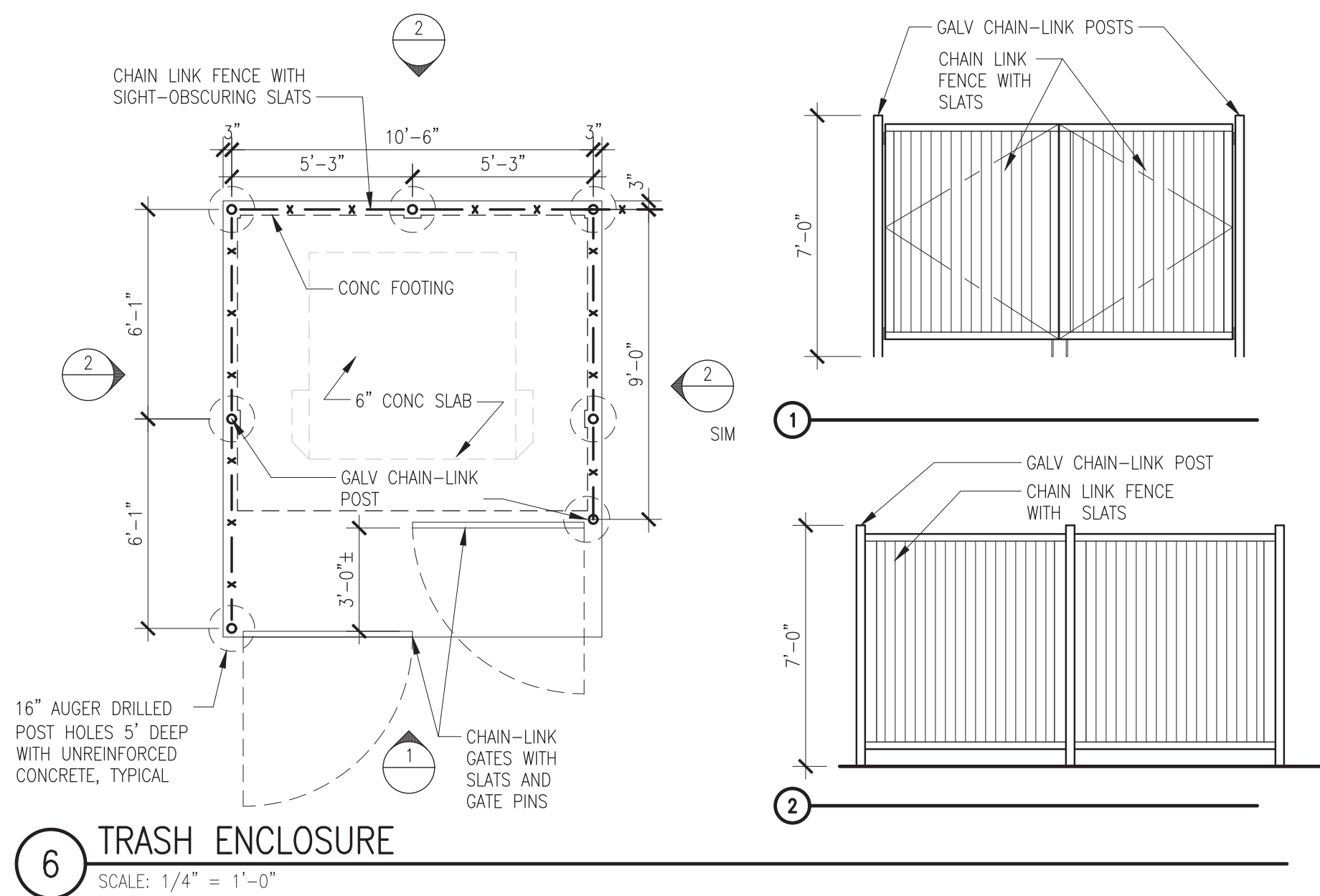
BUILDING A
 Freeman Road Logistics
 Puyallup, WA

SHEET INFORMATION

RELEASE FOR: PERMIT SUBMITTAL
 TITLE: SITE PLAN

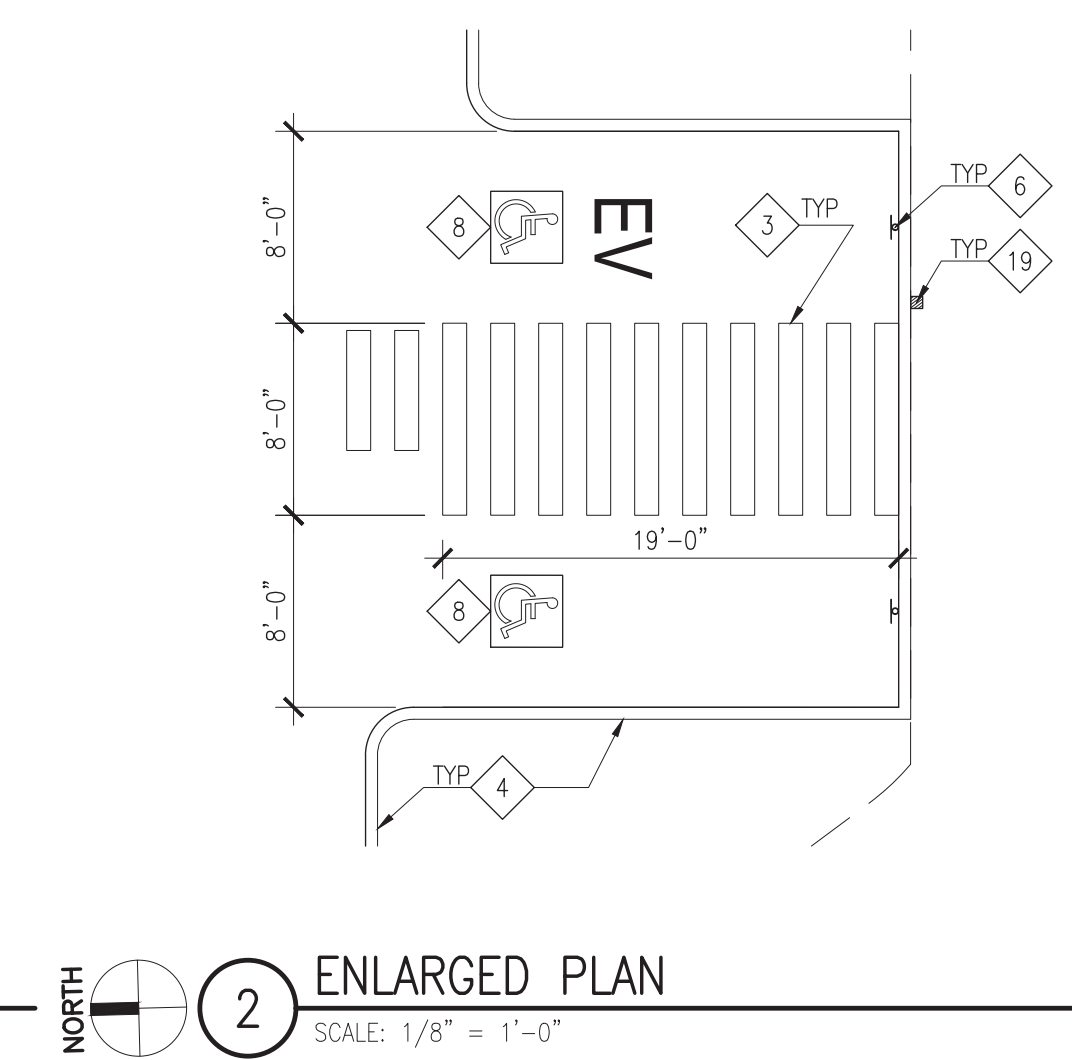
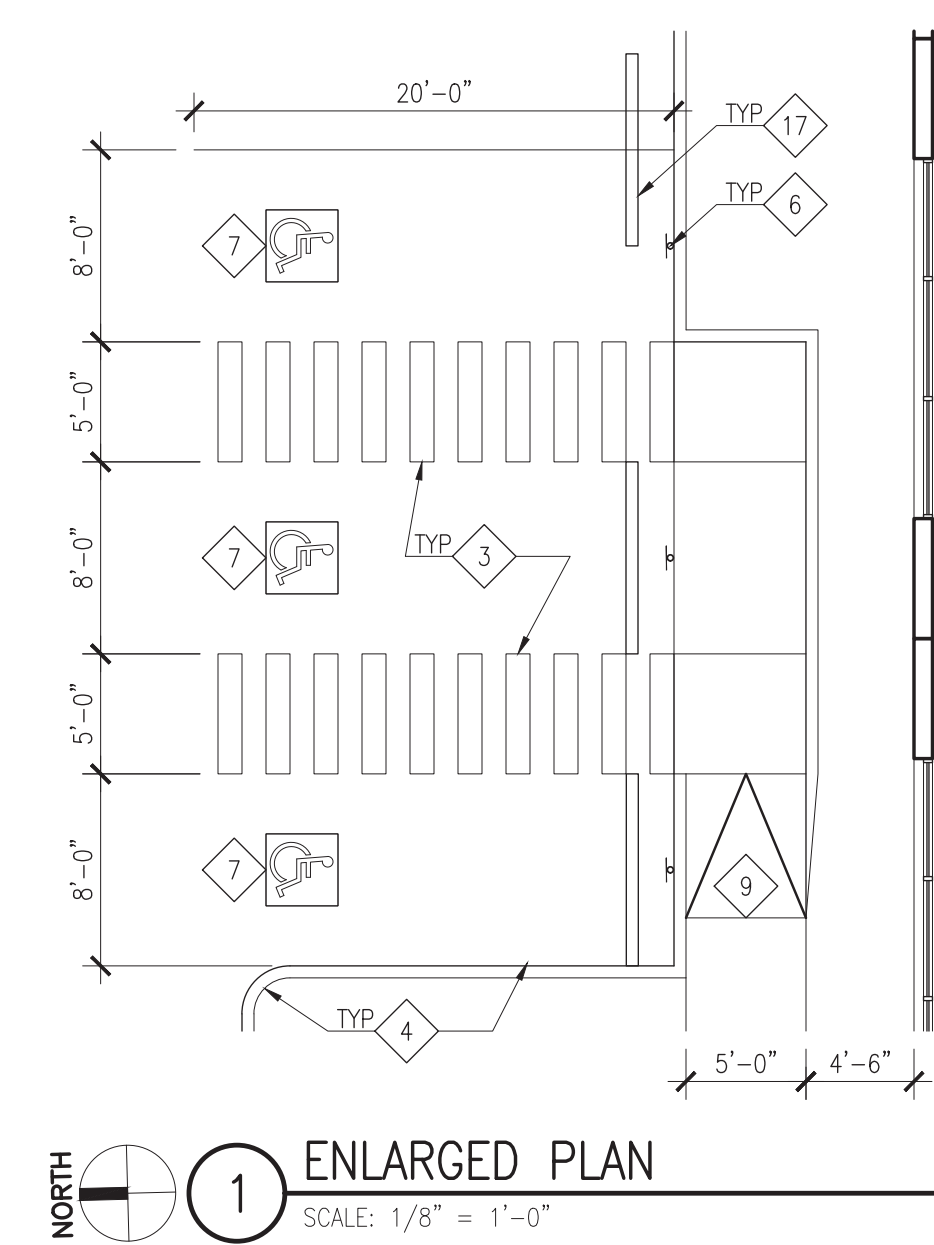
DESIGNED BY: DRAWN BY:
 REVIEWED BY: APPROVED BY:

DATE: 01 05 21 SHEET NO: A1.1A
 PROJECT NO: 201401.13.031



SITE KEYNOTES

- NOTE: NOT ALL KEYNOTES ARE USED
- 1 AC P/MT RAMP, 1:12 MAX SLOPE, SEE CIVIL DWGS.
 - 2 CONC LANDING, 5'-0"W x 5'-0"L MIN.
 - 3 PAINT STRIPING ON FLOOR OR PAVEMENT.
 - 4 EXTRUDED CONC CURB - 6" TYP W/ 24" RAD. OUTSIDE CORNERS TYP UON. USE THICK-FACE CURB AT SIDEWALKS.
 - 5 7'-0" HIGH CONC. ENCL. W/ CHAIN LINK GATES & SIGHT OBSCURING SLATS. SEE STRUCTURAL FOR WALL CONST.
 - 6 ACCESSIBLE PARKING SIGN, SEE DET 8/A1.2.
 - 7 ACCESSIBLE PARKING STALL W/ PAINTED INTERNATIONAL SYMBOL OF ACCESS. MAX SLOPE 1v:48h.
 - 8 VAN ACCESSIBLE PARKING STALL W/ PAINTED INTERNATIONAL SYMBOL OF ACCESS. MAX SLOPE 1v:48h.
 - 9 ACCESSIBLE RAMP, MAX SLOPE 1v:12h, MAX RISE 6" MIN LENGTH 6'-0", W/ NON-SLIP SURFACE.
 - 10 4" THICK, 5'-0"W (UON) CONC WALK, MAX SLOPE 1v:20h.
 - 11 COMPACT PARKING STALL W/ PAINTED "COMPACT" DESIGNATION.
 - 12 PROVIDE SIGN W/ THE INTERNATIONAL SYMBOL OF ACCESS, ATTACH TO GLASS ADJACENT TO DOOR.
 - 13 APPROXIMATE ELECTRICAL TRANSFORMER LOCATION
 - 14 APPROXIMATE GAS METER LOCATION
 - 15 ACCESSIBLE PATH OF TRAVEL TO THE PUBLIC WAY
 - 16 EXTERIOR AREA FOR ASSISTED RESCUE (IBC 1009.7)
 - 17 CONCRETE WHEEL STOP
 - 18 BICYCLE RACK (FOR 2 OR MORE BICYCLES)
 - 19 EV CHARGING STATIONS PER WAC 51-50-0429



REVISIONS

NO.	DATE	DESCRIPTION
2	01 31 24	PERMIT SUBMITTAL
1	10 14 22	SEPA RESUBMITTAL
D	11 01 21	DESIGN REVIEW APPLICATION
C	09 15 21	PRELIMINARY BID
B	03 19 21	SEPA APPLICATION
A	01 05 21	PRE-APPLICATION
ISSUE NO.	DATE	ITEM

PROFESSIONAL STAMP

Digitally signed by
Randy Brown
Date: 2024.02.01
09:13:24
-08'00'

PROJECT INFORMATION

BUILDING A
Freeman Road Logistics
Puyallup, WA

SHEET INFORMATION

RELEASE FOR: PERMIT SUBMITTAL
TITLE: ENLARGED SITE PLANS & DETAILS
DESIGNED BY: DRAWN BY:
REVIEWED BY: APPROVED BY:
DATE: 01 05 21
SHEET NO: A1.2
PROJECT NO: 201401.13.031