

South Sound Geotechnical Consulting

August 12, 2022

Doec, LLC
11192 – 25th Avenue East
Tacoma, Washington 98445

Attention: Mr. Don Huber

Subject: Groundwater Flow and Infiltration Characteristics
2nd Street NE Apartments
Puyallup, Washington
SSGC Project No. 19055

Mr. Huber,

South Sound Geotechnical Consulting (SSGC) has prepared this letter regarding groundwater flow direction and infiltration characteristics of site soils at the planned apartment development on 2nd Street NE at 5th Avenue NE in Puyallup, Washington.

Based on topographical maps of the area, ground surface elevations increase to the south and east of the site (Refer to the attached topographical map showing contours). The surface elevations to the south of the site are around 50, and the elevations north of the site near the river are around 40. In general, groundwater flow will follow surface gradients. Additionally, the river is flowing northwest in this area and it should be expected the regional groundwater elevations to be related to the river flow direction and elevations. Based on this information it should be anticipated the groundwater flowpath will be to the north or northwest, which is greater than a ¼ mile flow path to the river.

A Pilot Infiltration Test (PIT) was performed in July of 2019 during the dry season and groundwater was monitored during the 2019-2020 wet season using a monitoring well also installed in July. The highest groundwater elevation during the monitoring period was 10'10" below ground surface. Provided that at least 5 feet of separation is maintained from the bottom of the infiltration facility to this depth, groundwater should not adversely affect the infiltration facility. The recommended design infiltration rate provided in our July 2019 geotechnical report is based on correction factors provided in the City of Puyallup stormwater manual. The recommended infiltration rate is considered appropriate for this project.

Respectfully,

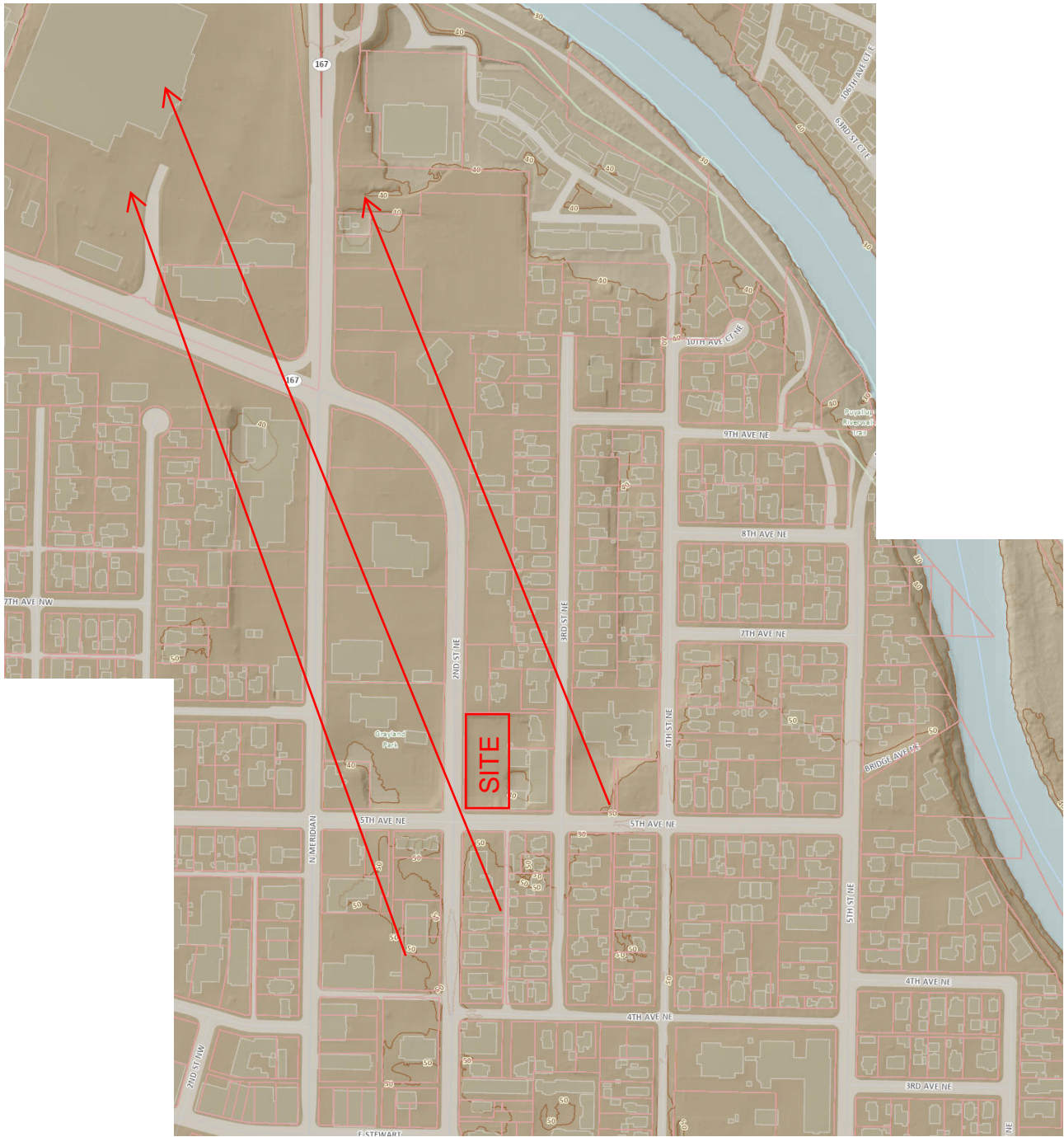
South Sound Geotechnical Consulting



Timothy H. Roberts, P.E.
Member/Geotechnical Engineer

Attachment: Topographic Map

cc: AHBL, Inc. – Mr. Matt Weber, P.E.



2215 North 30th Street
 Suite 300
 Tacoma, WA 98403
 253.383.2422 TEL
 253.383.2572 FAX

Puyallup 2nd St Apartments

Groundwater Flow Exhibit

EXHIBIT

1