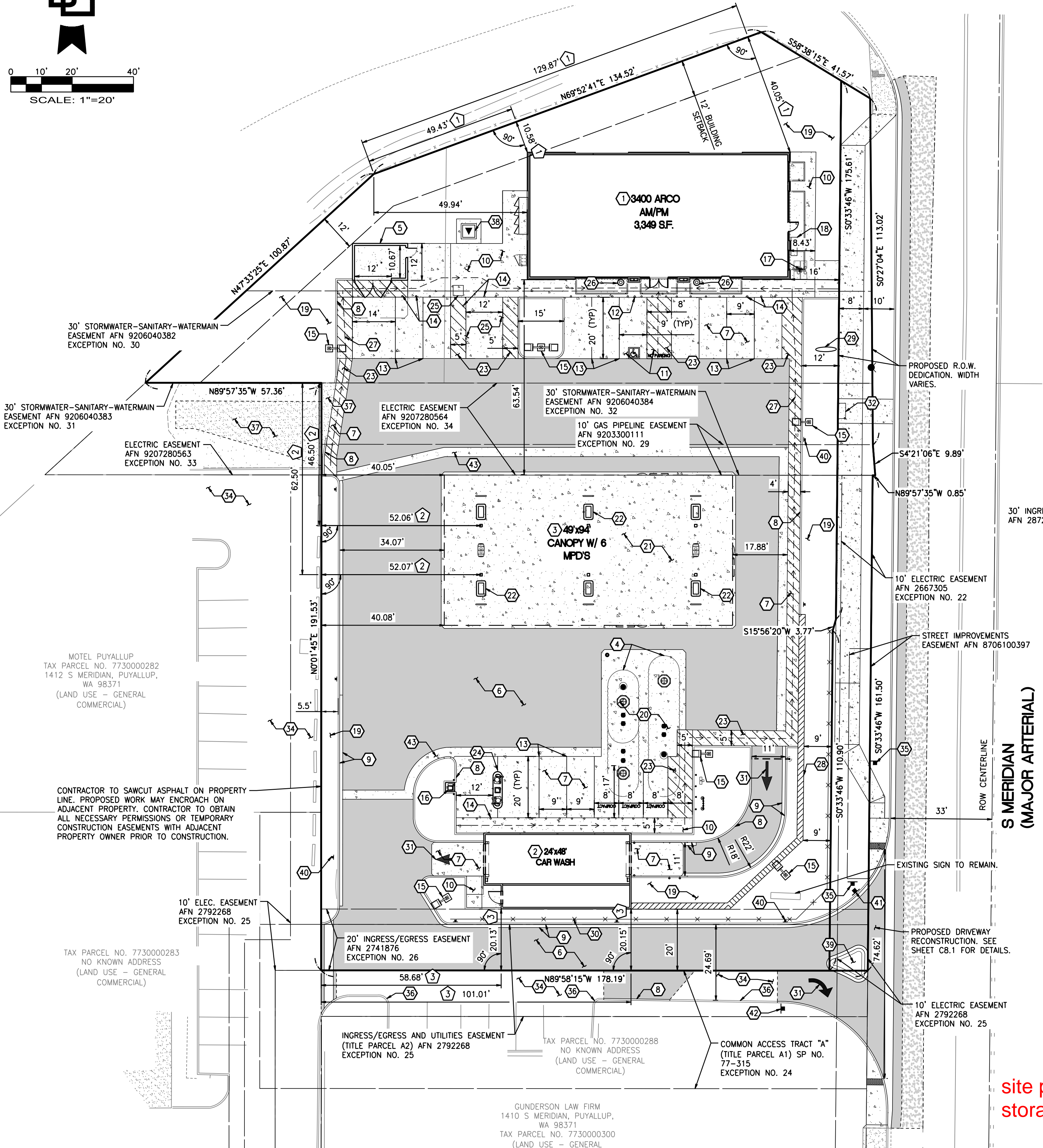
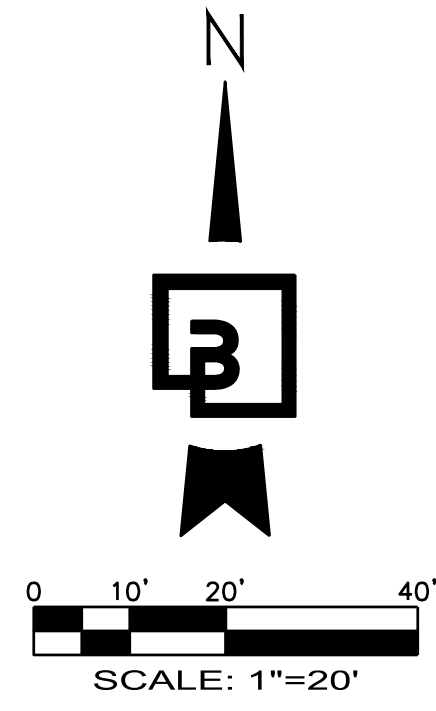


**CONSTRUCTION NOTES:**

1. PROPOSED CONVENIENCE STORE. CONFIRM ALL DIMENSIONS WITH ARCHITECTURAL PLANS. SEE ARCHITECTURAL PLANS FOR DETAILS.
2. PROPOSED CAR WASH. CONFIRM ALL DIMENSIONS WITH ARCHITECTURAL PLANS. SEE ARCHITECTURAL PLANS FOR DETAILS.
3. PROPOSED LOCATION OF FUEL CANOPY. CONFIRM ALL DIMENSIONS WITH THE ARCHITECTURAL AND FUEL PLANS. SEE ARCHITECTURAL PLANS AND FUEL PLANS FOR DETAILS.
4. PROPOSED 25K AND 22K SPLIT UNDERGROUND STORAGE TANKS. SEE FUEL PLANS FOR DETAILS.
5. PROPOSED TRASH ENCLOSURE AND CONCRETE TRASH ENCLOSURE SLAB. SEE ARCHITECTURAL PLANS FOR DETAILS.
6. PROPOSED ON-SITE ASPHALT PAVEMENT. SEE DETAIL 1/C7.0.
7. PROPOSED ON-SITE CONCRETE PAVEMENT. SEE DETAIL 2/C7.0. PROVIDE EXPANSION AND CONTROL JOINTS PER SHEET C7.0.
8. PROPOSED BARRIER CURB. SEE DETAIL 4/C7.0.
9. PROPOSED CURB AND GUTTER. SEE DETAIL 3/C7.0.
10. PROPOSED CONCRETE SIDEWALK, WIDTH VARIES. SEE DETAIL 5/C7.0.
11. PROPOSED ACCESSIBLE PARKING STALL AND AISLE. SEE DETAIL 1/C7.1.
12. PROPOSED BOLLARD MOUNTED ACCESSIBLE PARKING STALL SIGNAGE. SEE DETAIL 2/C7.1.
13. PROPOSED PARKING STALL WITH 4" WIDE WHITE REFLECTIVE PAINT STRIPE (TYP.). SEE DETAIL 4/C7.1.
14. PROPOSED BOLLARD (TYP.). SEE DETAIL 3/C7.2.
15. PROPOSED LOT LIGHT. SEE DETAIL ON-SITE PHOTOMETRIC PLANS FOR MORE DETAILS. COORDINATE ALL CONDUIT RUNS, WIRING REQUIREMENTS, ETC. WITH ELECTRICAL PLANS. SEE DETAIL 1/C7.2.
16. PROPOSED AIR/WATER UNIT. SEE ARCHITECTURAL PLANS FOR DETAILS.
17. PROPOSED BICYCLE STORAGE. SEE DETAIL 4/C7.2.
18. PROPOSED SEATING BENCH. SEE ARCHITECTURAL PLANS FOR DETAILS.
19. PROPOSED LANDSCAPING. SEE LANDSCAPE PLANS.
20. PROPOSED CONCRETE TANK FUEL SLAB. SEE FUEL PLANS FOR DESIGN.
21. PROPOSED UNDER CANOPY CONCRETE SLAB. SEE ARCHITECTURAL PLANS FOR DETAILS.
22. PROPOSED FUEL DISPENSERS WITH HOOP BOLLARDS (TYP.). SEE FUEL PLANS FOR DETAILS.
23. PAVEMENT MARKINGS - 4" WIDE WHITE PAINTED STRIPES @ 2' O.C./45° ANGLE. SEE DETAIL 5/C7.1.
24. PROPOSED VACUUM UNIT. SEE ARCHITECTURAL PLANS FOR DETAILS.
25. PROPOSED FUTURE VAN ACCESSIBLE AND STANDARD EV CHARGING STATION. FREEWIRE EV CHARGING STATION TO BE INSTALLED, SEE DETAIL 2/C7.2.
26. PROPOSED TRASH RECEPTACLE (TYP.).
27. PROPOSED ACCESSIBLE PATH. REFER TO ACCESSIBLE PATH NOTE THIS SHEET.
28. PROPOSED BLOCK RETAINING WALL. REFER TO STRUCTURAL ENGINEERING PLANS FOR DETAILS.
29. PROPOSED ON-SITE MONUMENT SIGN.
30. PROPOSED SITE FENCE. REFER TO ARCHITECTURAL PLANS FOR MORE DETAILS.
31. PROPOSED DIRECTIONAL ARROWS. SEE DETAIL 6/C7.1.
32. PROPOSED BUS STOP BENCH PER PIERCE TRANSIT STANDARD BENCH. SEE DETAIL 6/C8.3. CONTRACTOR TO GIVE PIERCE TRANSIT TWO (2) WEEKS NOTICE PRIOR TO CONSTRUCTION TO ALLOW PIERCE TRANSIT TO REMOVE THE BUS STOP SIGN AND BENCH. UPON COMPLETION OF CONSTRUCTION CONTRACTOR TO COORDINATE REINSTALLATION OF BUS STOP WITH PIERCE TRANSIT.
33. EXISTING FIRE HYDRANT TO REMAIN.
34. EXISTING ASPHALT TO REMAIN.
35. EXISTING SIGN TO BE RE-SET. FINAL LOCATION TO BE APPROVED WITH ROW INSPECTOR.
36. EXISTING CURB TO REMAIN.
37. RESTORE GRAVEL SURFACE.
38. PROPOSED TRANSFORMER.
39. PROPOSED MOUNTABLE CURB ISLAND. SEE DETAIL 7/C7.1.
40. PROPOSED 12"x18" "NO PARKING FIRE LANE" SIGN (TYP. OF B).
41. PROPOSED "DO NOT ENTER" SIGN.
42. PROPOSED "RIGHT TURN ONLY" SIGN.
43. PROPOSED CONCRETE SWALE. SEE DETAIL 1/C5.4.
44. PROPOSED FIRE HYDRANT. REFER TO SHEET C6.0 FOR MORE DETAILS.

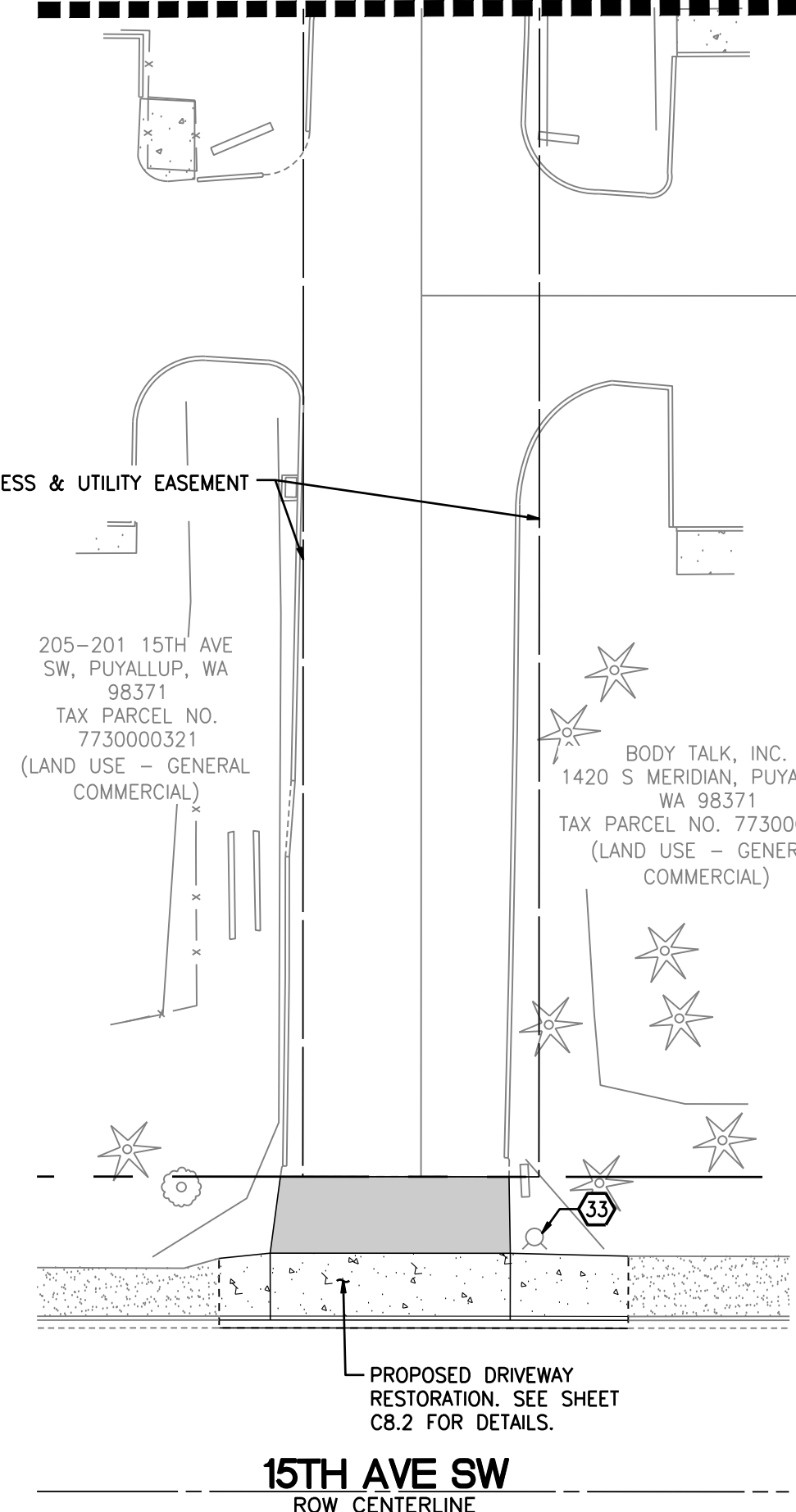
**SITE PLAN**  
FOR  
**ARCO ampm PUYALLUP**  
SEC. 33, TWN. 20 N, RGE. 4 E, W.M.  
CITY OF PUYALLUP, PIERCE COUNTY

**ACCESSIBLE PATH OF TRAVEL NOTE:**  
WALKWAYS ALONG ACCESSIBLE ROUTES OF TRAVEL SHALL BE CONTINUOUSLY ACCESSIBLE. BE A MINIMUM OF 48" IN WIDTH (PER PAR REQUIREMENTS FOUND IN PROWAG), HAVE A MAXIMUM 2.0% CROSS SLOPE, AND SHALL HAVE RAMPS COMPLYING WITH ACCESSIBILITY STANDARDS (SECTION 405) WHERE NECESSARY TO CHANGE ELEVATION AT A LONGITUDINAL SLOPE EXCEEDING 5% (1:20).



- 1. MEASUREMENT FROM NORTHWEST PROPERTY CORNER TO FINISH FACE OF BUILDING FOUNDATION (NOT FOOTING). C-STORE IS NOT PARALLEL TO NORTHWEST PROPERTY LINE. DIMENSIONS FROM NORTHWEST PROPERTY CORNER ARE ONLY ACCURATE TO BUILDING CORNERS AS SHOWN.
- 2. MEASUREMENT FROM NORTHWEST PROPERTY CORNER TO CENTER OF CANOPY COLUMNS. CANOPY IS NOT PARALLEL TO WEST PROPERTY LINE. DIMENSIONS FROM NORTHWEST PROPERTY CORNER ARE ONLY ACCURATE TO CENTER OF CANOPY COLUMNS AS SHOWN.
- 3. MEASUREMENT FROM SOUTHWEST PROPERTY CORNER TO FINISH FACE OF BUILDING FOUNDATION (NOT FOOTING). CAR WASH IS NOT PARALLEL TO SOUTH PROPERTY LINE. DIMENSIONS FROM SOUTHWEST PROPERTY CORNER ARE ONLY ACCURATE TO CAR WASH AS SHOWN.

**MATCHLINE - SEE LEFT FOR CONTINUATION**



CLIENT:

**Barghausen Consulting Engineers, Inc.**

18215 72nd Avenue South  
Kent, WA 98032  
425.251.6222  
[barghausen.com](http://barghausen.com)

NO.	DATE	REVISION DESCRIPTION

SEAL:

**PRFI20240124**

DEVELOPMENT INFORMATION:

**ARCO NTI**  
**3400 am/pm**  
**FUEL CANOPY w/ 6 MPD'S**

SITE ADDRESS:

**1402 S. MERIDIAN**  
**@ HIGHWAY 512**  
**PUYALLUP, WASHINGTON**

**FACILITY #TBD**

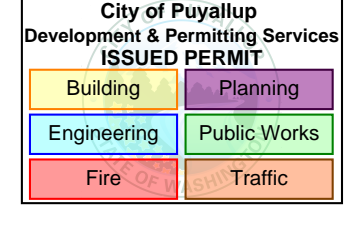
DESIGNED BY: JDF	ALLIANCE ZRM:
CHECKED BY: AW	BP REP:
DRAWN BY: JDF	ALLIANCE PM:
VERSION: 1	PROJECT NO: 21730
DRAWING TITLE:	SITE PLAN
SHEET NO:	

**APPROVED**

BY: CITY OF PUYALLUP  
DEVELOPMENT ENGINEERING

DATE: \_\_\_\_\_

NOTE: THIS APPROVAL IS VOID AFTER 180 DAYS FROM APPROVAL DATE. THE CITY WILL NOT BE RESPONSIBLE FOR ERRORS AND/OR OMISSIONS ON THESE PLANS. FIELD CONDITIONS MAY DICTATE CHANGES TO THESE PLANS AS DETERMINED BY THE DEVELOPMENT ENGINEERING MANAGER.



**UTILITY CONFLICT NOTE:**  
THE CONTRACTOR SHALL BE RESPONSIBLE FOR VERIFYING THE LOCATION, DIMENSION, AND DEPTH OF ALL EXISTING UTILITIES WHETHER SHOWN ON THESE PLANS OR NOT BY POT-HOLING THE UTILITIES AND SURVEYING THE HORIZONTAL AND VERTICAL LOCATION PRIOR TO CONSTRUCTION. THIS SHALL INCLUDE CALLING UTILITY LOCATE AT 811 48 HOURS IN ADVANCE AND THEN POT-HOLING ALL OF THE EXISTING UTILITIES AT LOCATIONS OF NEW UTILITY CROSSINGS TO PHYSICALLY VERIFY WHETHER OR NOT CONFLICTS EXIST. LOCATIONS OF SAID UTILITIES AS SHOWN ON THESE PLANS ARE BASED UPON THE UNVERIFIED PUBLIC INFORMATION AND ARE SUBJECT TO VARIATION. IF CONFLICTS SHOULD OCCUR, THE CONTRACTOR SHALL NOTIFY BARGHAUSEN CONSULTING ENGINEERS, INC. TO RESOLVE ALL PROBLEMS PRIOR TO PROCEEDING WITH CONSTRUCTION.

Know what's below.  
Call before you dig.  
Dial 811

**MATCHLINE - SEE RIGHT FOR CONTINUATION**

**site plan for underground storage tank(s).**

**C3.0**