

GENERAL NOTES

- COMPLETE INSTALLATION OF THE MECHANICAL SYSTEM SHALL BE PER THE MOST CURRENT BUILDING, MECHANICAL, ENERGY, PLUMBING, FIRE AND HEALTH CODES AND REGULATIONS AS ADOPTED BY THE LOCAL JURISDICTION.
- ALL AIR-CONDENSATION UNITS WITHOUT INTERNAL TRAP SHALL HAVE A P-TRAP FOR THE CONDENSATE PAN WITH PLUG TEES FOR CLEANING AND CONDENSATE PIPES SHALL BE DISCHARGED TO EXISTING CONDENSATE WASTE PIPING, VERIFY SIZE AND LOCATION AT SITE.
- MECHANICAL CONTRACTOR SHALL COORDINATE DIFFUSER LOCATIONS AND DUCT ROUTING CLEARANCES WITH THE STRUCTURAL, REFLECTED CEILING AND LIGHTING PLANS.
- PLUMBING CONTRACTOR SHALL COORDINATE PLUMBING VENT STACKS WITH THE EQUIPMENT TO MAINTAIN A MINIMUM OF 10 FT. FROM THE OUTSIDE AIR INTAKES.
- ALL FIRE RATED STRUCTURE SHALL BE FIRE DAMPERS, VERIFY WITH THE ARCHITECTURAL AND INSTALL PER THE LOCAL JURISDICTIONS.
- ALL AIR DISTRIBUTION OUTLETS SHALL HAVE VOLUME CONTROL DEVICES.
- ALL VOLUME DAMPERS IN NON-ACCESSIBLE CEILING SHALL HAVE A CONTROL ARM EXTENDED TO AN ACCESSIBLE LOCATION ("POINT" REGULATORS OR ROTO-TWIST). EXACT LOCATION OF CONTROL DEVICES VISIBLE IN FINISHED SPACES SHALL BE COORDINATED WITH THE ARCHITECT.
- ALL 90 DEGREE TRUNK DUCT ELBOWS SHALL BE SMOOTH-ROUND OR SQUARE WITH TURNING VANES.
- MECHANICAL CONTRACTOR SHALL LOCATE AND COORDINATE EXACT LOCATION OF PIPING AND DUCTWORK AND PENETRATIONS WITH THE STRUCTURE.
- MAXIMUM LENGTH OF FLEXIBLE DUCTS SHALL BE 6' OR AS SHOWN ON DRAWINGS.
- ALL DUCTWORK, EQUIPMENT AND PIPING SHALL BE SEISMICALLY SUPPORTED PER SMACNA AND LOCAL REGULATIONS.
- ALL AIR FILTERS SHALL HAVE EFFICIENCY BASED ON THE ASHRAE STANDARD 52-76 (ATMOSPHERIC DUST SPOT).
- ALL MECHANICAL EQUIPMENT SHALL CONFORM TO SMACNA AND LOCAL REGULATIONS FOR SEISMIC RESTRAINT (INCLUDING PIPING AND DUCTWORK).
- ALL EQUIPMENT AND ACCESSORIES IN CONCEALED SPACES REQUIRING ACCESS SHALL HAVE ACCESS DOORS.
- TOTAL SYSTEM SHALL BE WARRANTED FOR ONE YEAR, STARTING FROM THE TIME OF OWNER/ENGINEER'S FINAL ACCEPTANCE.
- HVAC NOTES:
 - PROVIDE FLEXIBLE CONNECTION IN ALL DUCTS CONNECTING TO AIR MOVING EQUIPMENT AS CLOSE TO FAN AS POSSIBLE. FLEXIBLE CONNECTION SHALL CONSIST OF 4" OR MORE OF AIR TIGHT, FIREPROOF FLEXIBLE NEOPRENE COATED WOVEN FIBROUS GLASS MATERIAL VENT FABRICS, INC.
 - ALL DUCTWORK SHALL BE SHEET METAL SOUND LINED RECTANGULAR SUPPLY AND RETURN DUCTS WITHIN 10 FEET FROM THE UNIT OPENINGS. INTERNAL INSULATION OF SUPPLY DUCTS SHALL BE ELASTOMERIC FIBERGLASS DUCT LINER IS NOT ALLOWED.
 - ALL SUPPLY AND RETURN FLEXIBLE DUCTS SHALL BE CONSTRUCTED OF DOUBLE LAMINATION OF POLYESTER ENCAPULATED STEEL WIRE HELIX FOR INNER CORE HIGH DENSITY FIBERGLASS INSULATION AND GRAY POLYESTER FILM WITH SPIRAL REINFORCEMENTS EQUAL TO "ATCO-70 SERIES" (MIN. POS. PRESS. = 6" W.G., NEG. PRESS = 0.75" W.C.).
 - PROVIDE LOCKABLE VOLUME DAMPERS IN ALL AIR DISTRIBUTION OUTLETS.
 - DUCT HANGERS, SUPPORTS AND METHODS OF INSTALLATION SHALL CONFORM TO ASHRAE AND SMACNA RECOMMENDATIONS.
 - DUCT SIZES SHOWN ON PLANS INDICATE INSIDE FREE AREA.
 - ALL DUCTWORK SHALL BE CLASS 1 AIR DUCT AS APPROVED BY U.L.-181.
 - DUCTS - SHEET METAL DUCTS SHALL BE INSULATED WITH THE INSULATION AND THICKNESSES AS SHOWN HEREIN (REDUCE THE INSULATION THICKNESS BY THERMAL VALUE OF SOUND LINING).
 - SUPPLY AIR DUCTS IN HEATED SPACE; NO INSULATION REQUIRED IF SOUNDLINED, OTHERWISE 1" THICK K = 0.23 @ 75 DEGREES F.
 - SUPPLY AIR DUCTS IN NON-HEATED SPACE; APPROXIMATELY 3" THICK K=0.23 @ 75 DEGREES F., TO PROVIDE A MINIMUM THERMAL RESISTANCE VALUE OF MINIMUM R-11.
 - SUPPLY AIR DUCTS OUTSIDE OF BUILDING SAME AS CONDITIONED SPACE EXCEPT WITH WEATHERPROOF BARRIER.
 - RETURN AIR DUCTS; SHALL HAVE SAME INSULATION AS THE SUPPLY AIR DUCTS.
 - EXHAUST AIR DUCTS; NO INSULATION REQUIRED.
 - INDOOR DUCTS HANDLING OUTSIDE AIR SHALL HAVE FIBERGLASS BLANKET WITH VAPOR BARRIER JACKET ASU, 1" THICK, K = 0.23 @ 75 DEGREES F. (ALL DUCTWORK FOR THE BUILDING SUPPLY FAN AND OUTSIDE AIR INTAKES TO INDIVIDUAL HEAT PUMPS).
- THE CONTRACTOR SHALL NOT OPERATE THE EQUIPMENT FOR TEMPORARY HEATING OR VENTILATION DURING THE CONSTRUCTION (ALL EQUIPMENT SHALL RUN FOR TESTING AND BALANCING PURPOSES ONLY). NOTIFY THE ENGINEER 48 HOURS (MINIMUM) IN ADVANCE TO ARRANGE A FINAL FIELD INSPECTION PRIOR TO COVERING UP THE CEILING.
- EACH FAN UNIT OVER 2000 CFM SHALL HAVE A DUCT/SMOKE DETECTOR PER 2015 IMC 606 IN RETURN DUCTS AS REQUIRED BY THE JURISDICTIONS. UNIT SHALL SHUT DOWN UPON SMOKE DETECTION (COORDINATE WITH FIRE ALARM CONSULTANT/CONTRACTOR PRIOR TO BIDDING/CONSTRUCTION).
- CONTRACTOR IS TO BRING UP TO THE DISCREPANCIES AND ITEMS WHICH ARE NOT SPECIFICALLY CALLED FOR OR SHOWN BUT ARE REQUIRED FOR A COMPLETE MECHANICAL SYSTEM AND AFFECT HIS CONTRACT PRIOR TO ENTERING AND SIGNING THE CONTRACT. AFTER AWARDING THE CONTRACT ALL SUCH ITEMS REQUIRED FOR A COMPLETE SYSTEM READY FOR THE OWNER'S BENEFICIAL USE SHALL BE FURNISHED AND INSTALLED INCLUDING ALL SUCH DISCREPANCY ITEMS MENTIONED ABOVE, AT NO ADDITIONAL COST TO THE OWNER AND PER LOCAL CODES, MANUFACTURER'S RECOMMENDATIONS AND APPLICABLE STANDARDS WITH THE ARCHITECT/ENGINEER'S APPROVAL.
- ALL EQUIPMENT SUPPLIED FOR THESE SPECIFICATIONS SHALL BE FREE FROM DEFECTS IN MATERIAL, WORKMANSHIP, AND TITLE, AND SHALL BE OF THE KIND AND QUALITY DESCRIBED HEREIN. IF IT APPEARS WITHIN ONE YEAR FROM DATE OF FINAL ACCEPTANCE THAT EQUIPMENT DOES NOT MEET THE WARRANTIES ABOVE, THE CONTRACTOR SHALL IMMEDIATELY CORRECT ANY DEFECT AND SHALL RESTORE THE SYSTEM TO THE ORIGINAL SATISFACTORY CONDITIONS AT HIS EXPENSE, THE FOREGOING WARRANTY IS EXCLUSIVE AND IN LIEU OF OTHER WARRANTIES, WHETHER WRITTEN, ORAL, IMPLIED OR STATUTORY, NO WARRANTY OF MERCHANTABILITY OR FITNESS FOR PURPOSE SHALL APPLY. (THE WARRANTY SHALL START FROM THE TIME OF ARCHITECT/ENGINEER'S FINAL ACCEPTANCE.)
- ENTIRE INSTALLATION OF ALL EQUIPMENT, CONTROL, PIPING, DUCTWORK AND RELATED ACCESSORIES SHALL BE PER BASIC OWNERS' STANDARDS, MECHANICAL CONTRACTOR IS TO FAMILIARIZE HIMSELF WITH THESE STANDARDS.
- MECHANICAL CONTRACTOR SHALL VISIT THE SITE AND VERIFY THE ROUTING AND INSTALLATION FEASIBILITY OF ALL EQUIPMENT, PIPING AND DUCTWORK PRIOR TO SUBMITTING HIS BID AND INCLUDE IN HIS BID ADDITIONAL PIPING, DUCTWORK, FITTINGS, OFFSETS, ETC. WHICH MIGHT BE REQUIRED FOR A COMPLETE SYSTEM READY FOR OWNER'S BENEFICIAL USE.
- COORDINATE THE CONSTRUCTION SCHEDULE WITH THE ARCHITECT AND PERFORM ALL REQUIRED WORK IN STRICT ACCORDANCE WITH THE OWNER'S SCHEDULE.
- MECHANICAL CONTRACTOR SHALL PAY FOR AND OBTAIN ALL REQUIRED PERMITS AND CERTIFICATES REQUIRED BY THE AUTHORITIES HAVING JURISDICTION.
- ADJUST ALL EQUIPMENT AND PERFORM A COMPLETE AIR-BALANCING AND PUT ALL MECHANICAL SYSTEMS IN OPERATION AND SUBMIT MINIMUM 4 COPIES OF BALANCING REPORTS TO THE OWNER/ARCHITECT.

PACKAGED THROUGH WALL HEAT PUMP SCHEDULE

DESIGNATION	PTHF-1	PTHF-2
ZONE	GUEST ROOM	GUEST ROOM
MANUFACTURER	AMANA	AMANA
MODEL	PTH073G	PTH123G
UNIT	WALL MOUNTED	WALL MOUNTED
COOLING * AIR (BTU/H)	7600	12000
HEATING * AIR (BTU/H)	12.0	11.0
EEP	6800	11300
EEP	290	290
CFM H/L/C	3.4	3.2
MIN. OSA CFM	---	---
AUXILIARY HEAT (KW)	2.1	3.0
MCA/MOCP	14.1/15	19.5/20
VOLTAGE	208	208
PHASE	1	1
RECEPTACLE	---	---
WEIGHT (LBS)	112	112
REMARKS	(1)(2)	(1)(2)

- (1) WITH ALUMINUM ARCHITECTURAL OUTDOOR GRILLE, WALL SLEEVE, COMPLETE WITH ROOM CABINET, SUB-BASE KIT, POWER DISCONNECT SWITCH, INSTALL KIT, CASING, CHASSIS, CONDENSATE DRAIN KIT, AMANA OCCUPANCY SENSOR ACCESSORY, LOW VOLTAGE WIRE HARNESS, HARD WIRE KIT, LEVELING LEGS, AND REMOTE THERMOSTAT CONTROL. (AMANA OR EQUAL)/COORD. VENTILATION DOOR SHALL PROVIDE MIN 50CFM OF OUTSIDE VENTILATION AIR. COORDINATE AVAILABLE UNIT GRILLE COLORS WITH ARCHITECT AND OWNER. UNIT WITH 2-SPEED FAN ADJUSTMENT.
- (2) DRAIN KIT TO BE USED FOR CONCEALED CONDENSATE PIPING & DISCHARGE TO PLUMBING DRAIN RISER.

FAN SCHEDULE

DESIGNATION	FT-1
ZONE	BATH RM./TOILET RM
MANUF.	PANSONIC
MODEL	FV-05-11WKS1
TYPE	CEILING
DRIVE	DIRECT
CFM	110
EEP. (W-HZ)	0.107
BOILER (GSA)	<0.3
HP FLA	10 AMPS
VOLTAGE	120
PHASE	1
WEIGHT	---
REMARKS	(1)(2)

- SOURCE SPECIFIC FAN SHALL BE AMCA 210 OR HW 916.
- CONTROLLED BY LIGHT SWITCH

ENERGY CODE NOTES:

- THERMOSTATS SHALL BE A 7 DAY PROGRAMMABLE TYPE WITH A 5 DEGREE DEADBAND AND AUTOMATIC SETBACK CONTROL PER C403.2.4.3.2 & C403.2.4.2 WSEC.
- HVAC EQUIPMENT SHALL MEET THE MINIMUM ENERGY EFFICIENCY RATINGS PER TABLES C403 WSEC.
- DUCT INSULATION AND SEALING SHALL MEET WSEC SECTION 403.2.7 REQUIREMENTS.
- SUPPLY AND RETURN DUCTS IN UNCONDITIONED SPACES SHALL BE INSULATED TO MIN. R-6. ROOFTOP HVAC DUCTWORK SHALL HAVE A WEATHER BARRIER AND INSULATED TO R-8 PER C403.2.7.2 WSEC.
- SUPPLY AND RETURN DUCTS IN CONDITIONED SPACES SHALL BE INSULATED TO MIN. R-3.3 PER C403.2.7.2 WSEC.
- PIPINS INSULATION SHALL MEET THE REQUIREMENTS OF TABLE 403.2.8 WSEC.
- OUTSIDE AIR DUCTS SHALL BE INSULATED PER WSEC C403.2.7. OUTSIDE AIR DUCTS SHALL HAVE A MOTORIZED DAMPERS OR AUTOMATIC DAMPER FOR ALL OUTSIDE AIR INTAKES 403.2.4.4 WSEC.
- HVAC SYSTEMS SHALL BE COMMISSIONED PER C408 WSEC.
- FRACTIONAL HORSEPOWER MOTORS 1HP AND LESS SHALL MEET THE EFFICIENCIES PER C403.2.10.3.
- AN AIR BARRIER TEST SHALL BE PERFORMED AND SHALL MEET THE CRITERIA SET FORTH IN C402.5.1.2 WHERE THE BUILDING ENVELOPE SHALL NOT EXCEED 0.40 CFM/SF AT A DIFFERENTIAL PRESSURE OF 0.3" W.G.

NOTE: INTERNAL INSULATION OF SUPPLY DUCTS SHALL BE CLOSED CELL ELASTOMERIC INSULATION, FIBERGLASS DUCT LINER IS NOT ALLOWED.

DESIGN CODES:

- ALL CODES WITH WASHINGTON STATE AMENDMENTS
- 2015 WASHINGTON STATE ENERGY CODE
- 2015 INTERNATIONAL MECHANICAL CODE
- 2015 UNIFORM PLUMBING CODE
- 2015 INTERNATIONAL FIRE CODE

B-20-0078

Did not locate any clouded or #8 revision for 02/14/2024 referenced in mechanical sheets submitted for revision.

City of Puyallup
Development & Permitting Services
ISSUED PERMIT

Building Planning
Engineering Public Works
Fire Traffic

SHEET INDEX

M.I.D.	GENERAL NOTES, LEGEND & SHEET INDEX
M1.0	GENERAL NOTES, LEGEND & SHEET INDEX
M2.1	FIRST LEVEL FLOOR PLAN - HVAC
M2.0	SECOND LEVEL FLOOR PLAN - HVAC
M3.0	THIRD LEVEL FLOOR PLAN - HVAC
M4.0	FOURTH LEVEL FLOOR PLAN - HVAC
M5.0	ROOF PLAN - HVAC
M6.0	MECHANICAL DETAILS
M7.0	SPECIFICATIONS

ABOSSEIN ENGINEERING L.L.C.

MECHANICAL - ELECTRICAL - LEED - PLUMBING - FIRE PROTECTION

18465 NE 65TH ST. #101 REDMOND, WA 98052

OFFICE: (425) 482-9441 FAX: (425) 482-9451

EMAIL: CSservice@abossein.com WEBSITE: www.abossein.com



ADDITION TO HAMPTON INN & SUITES

1515 S. MERIDIAN PUYALLUP, WA. 98071

GENERAL NOTES, SCHEDULES AND LEGEND

SHEET TITLE

Revisions:

01/24/2024

02/03/2024 HEAT TRACING ADD.

02/14/2024 ELEC REVISIONS

Job No.: 219007
Date: 01/03/2024

M1.0



**ABOSSEIN
ENGINEERING
L.L.C**

MECHANICAL - ELECTRICAL
LEED - PLUMBING -
FIRE PROTECTION

18465 NE 65TH ST.
#101
REDMOND, WA 98052

OFFICE: (425) 462-9441
FAX: (425) 462-9451

EMAIL:
CSservice@abossein.com

WEBSITE:
www.abossein.com



ADDITION TO HAMPTON INN &
SUITES

PUYALLUP, WA, 98671

1515 S. MERIDIAN

PROJECT TITLE:
**GENERAL NOTES, SCHEDULES
AND LEGEND**

Revisions:

- 01/24/2024
- 02/03/2024 HEAT TRACING ADD.
- 02/14/2024 ELEC REVISIONS

Job No.: 219007

Date: 01/03/2024

M1.1

Ventilation Rate per 2018 IMC 403 (based on ASHRAE Std. 62.1)

Equip. Tag	Zone	Occupancy Category	Area (sf)	People Outdoor Air Rate (cfm/person) Table 403.3	Population, Number of people in space.*	Area Outdoor Air Rate (cfm/sf) (Table 403.3)	Occupant Density (#/1000sf)	Breathing Zone Outdoor Air Flow Vbz/(CFM)	Zone Air Distribution Effectiveness Ex (Table 403.3.1.2)	Zone Outdoor Air Flow (Voz)/(CFM)	System Ventilation Efficiency Ev (Table 403.3.2.3.2)	Minimum Outdoor Air Intake Flow Vot/(CFM)	Proposed Design Outdoor Air Intake Flow Vot/(CFM)
1st Floor													
MAU-2 (exist)	Meeting Room 108	Conference/Meeting*	247	5.0	10	0.06	50	50.00	1.00	50.00	0.90	45	90

No space case occupancy is less than minimum as allowed in 403.3.4 exception, in no case shall the occupancy be less than that in 403.3.4

SPLIT SYSTEM HEAT PUMP SCHEDULE

DESIGNATION	HP-1	OHP-1
ZONE/FLOOR	MEETING RM	MEETING RM
MANUFACTURER	MITSUBISHI	MITSUBISHI
MODEL	MSZ-FS12NA	MRX-FS12NA
UNIT	INDOOR	OUTDOOR
NOMINAL TONS	-----	1.0
COOLING + AIR (MBH)	-----	12
HEATING + LOW AIR (TF (MBH))	-----	7.5
SEER (SEER)	-----	26.3
COEF (HSPF)	-----	4.2 (11.1)
CFM	200	-----
ESP (IN-H2O)	-----	-----
EDU/LARY HEAT (KW)	-----	-----
INDOOR FAN HP(FLA)	.65	-----
OUTDOOR FAN(FLA)	-----	-----
COMPRESSOR FLA/LRA	-----	-----
WCA/M COP	1 AMP	10/15
VOLTAGE	208	208
PHASE	1	1
WEIGHT (LBS)	29	63
REMARKS	(1)(2)(4)	(2)(3)

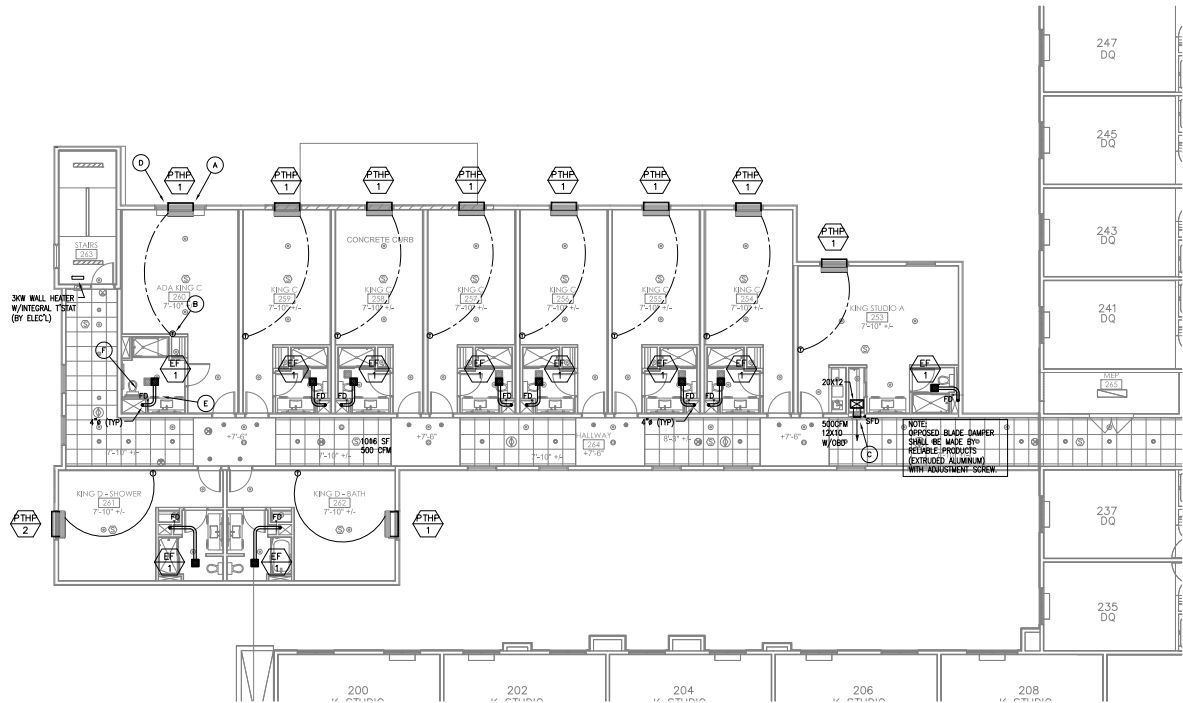
(1) INSTALL UNIT AS SHOWN AND AS RECOMMENDED BY THE MANUFACTURER AND IN COMPLIANCE WITH LOCAL CODES.
(2) R410A REFRIGERANT, COMPRESSOR SHORT CYCLE PROTECTOR, HIGH/LOW PRESS. SWITCH, DEFROST CONTROL, FILTER DRIER AND LIQUID SOLENOID, HYPER-HEATING OPTION VALVE, THERMOSTATIC EXPANSION VALVE, SINGLE POINT ELECTRICAL CONNECTION, CONDENSATE PUMP ACCESSORY, CONSULT MANUFACTURER FOR ACCESSORIES REQUIRED DUE TO LOCATION OF INDOOR/OUTDOOR UNITS, WITH INTEGRAL CONDENSATE PUMP, PROVIDE CONDENSATE PIPING TO APPROVED PLUMB FIXTURE PER UPC AND LOCAL JURIS.
(3) EACH INDOOR/OUTDOOR UNIT SHALL HAVE THE STATE ENERGY CODE APPROVED CERTIFICATIONS IN ORDER TO MEET THE REQUIRED ENERGY RATINGS, TESTS & CERTIFICATIONS AS COMBINED UNITS.
(4) ECONOMIZER EXCEPTION WSEC C403.5, EXCEPTION 3.

NOTE: CONTRACTOR SHALL USE REFRIGERANT LONG LINE GUIDE FOR PIPE SIZING PER MANUFACTURER WHEN LINES EXCEED 50 FT IN LENGTH. VERIFY WITH MFG FOR EXACT SIZES.

City of Puyallup
Development & Permitting Services
ISSUED PERMIT

Building	Planning
Engineering	Public Works
Fire	Traffic

- KEYED PLAN NOTES:**
- A THRU WALL HEAT PUMP IN WALL SLEEVE, OUTSIDE AIR DOOR TO REMAIN OPEN. UNIT WITH REMOTE TSTAT, HARDWIRED SUB-BASE KIT AND CONDENSATE DRAIN KIT. NECA CONDENSATE PIPING SHALL BE INSULATED WITH CLOSED CELL ELASTOMERIC INSULATION UNIT TO ENERGIZE VIA OCCUPANCY SENSOR (VERIFY W/OWNER) (TYPICAL)
 - B WALL MOUNTED THERMOSTAT, MOUNT AT 48" AFF IN ADA UNITS. (TYPICAL)
 - C FRONT ACCESS TYPE COMBINATION FIRE/SMOKE DAMPER, OVERSIZE SUPPLY GRILLE TO CONGEAL ACTUATOR COMPARTMENT (TYPICAL). SEE DETAIL A/M6.0
 - D SEE PLUMBING DRAWINGS FOR CONDENSATE PIPING (TYP).
 - E DUCTWORK SHALL BE FABRICATED AND SUPPORTED PER SMACNA LATEST EDITION OF DUCT CONSTRUCTION STANDARDS. SEE (TYP).
 - F SEE FIRE DAMPER DETAIL C/M6.0



2ND LEVEL FLOOR PLAN - HVAC
SCALE: 1/8" = 1'-0"



ABOSSEIN ENGINEERING L.L.C.

MECHANICAL - ELECTRICAL
LEED - PLUMBING -
FIRE PROTECTION

18465 NE 65TH ST.
#101
REDMOND, WA 98052

OFFICE: (425) 462-9441
FAX: (425) 462-9451

EMAIL:
CSservice@abossein.com

WEBSITE:
www.abossein.com



ADDITION TO HAMPTON INN &
SUITES
1515 S. MERIDIAN
PUYALLUP, WA, 98471

SHEET TITLE:
**2ND LEVEL FLOOR PLAN
HVAC**

Revisions:

△	01/24/2024
△	02/03/2024 HEAT TRACING ADD.
△	02/14/2024 ELEC REVISIONS

Job No.: 219007
Date: 01/03/2024

M2.0

City of Puyallup
Development & Permitting Services
ISSUED PERMIT

Building	Planning
Engineering	Public Works
Fire	Traffic



**ABOSSEIN
ENGINEERING
L.L.C**

MECHANICAL - ELECTRICAL
LEED - PLUMBING -
FIRE PROTECTION

18465 NE 65TH ST.
#101
REDMOND, WA 98052

OFFICE: (425) 462-9441
FAX: (425) 462-9451

EMAIL:
CSservice@abossein.com

WEBSITE:
www.abossein.com



ADDITION TO HAMPTON INN &
SUITES

PUYALLUP, WA, 98471

1515 S. MERIDIAN

1ST LEVEL FLOOR PLAN
HVAC

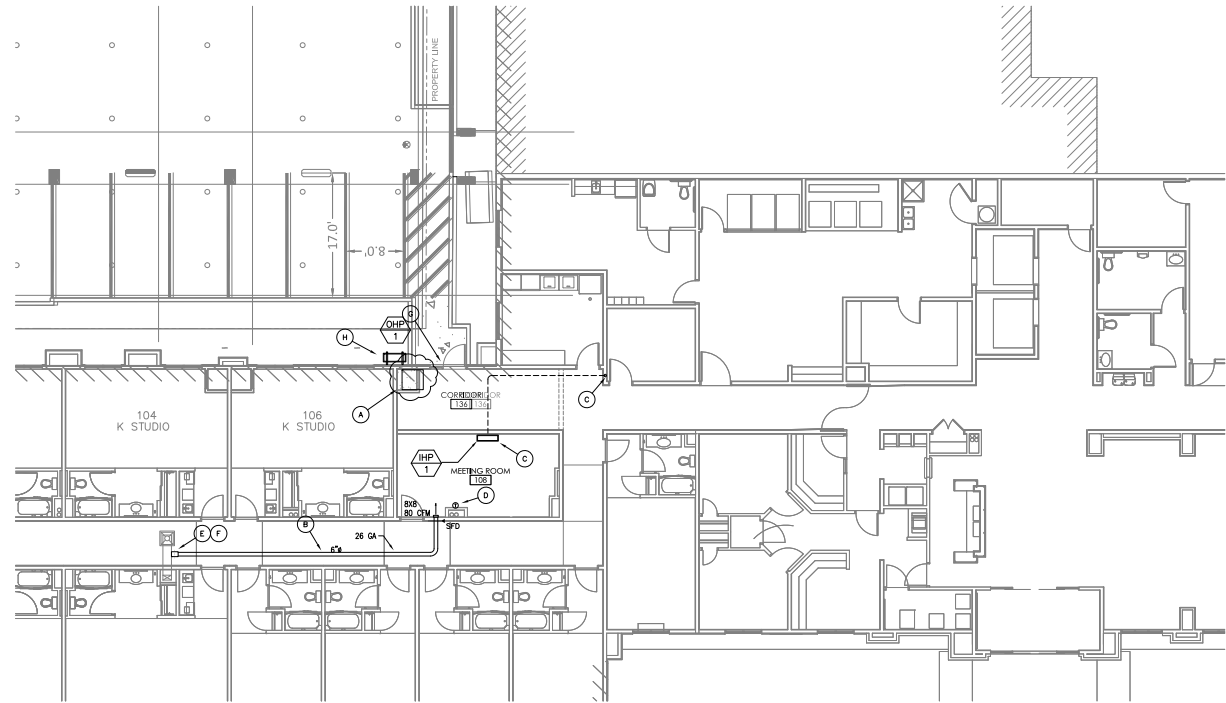
SHEET TITLE

Revisions:	
△	01/24/2024
△	02/03/2024 HEAT TRACING ADD.
△	02/14/2024 ELEC REVISIONS

Job No.: 219007
Date: 01/03/2024

M2.1

- KEYED PLAN NOTES:**
- Ⓐ REMOVE AND DISPOSE OF EXISTING DWELLING UNIT VERTICAL STACK HEAT PUMP IN THIS LOCATION. REMOVE POWER, CONDENSATE PIPING, SUPPORTS, ETC.
 - Ⓑ DUCTWORK SHALL BE FABRICATED AND SUPPORTED PER SMACNA LATEST EDITION OF DUCT CONSTRUCTION STANDARDS. SEE (TYP).
 - Ⓒ FAN COIL UNIT WITH INTEGRAL CONDENSATE PUMP. ROUTE 2" CONDENSATE PIPING TO APPROVED PLUMBING FIXTURE AND PER LOCAL JURISDICTIONAL REQUIREMENTS (TYP).
 - Ⓓ WALL MOUNTED THERMOSTAT. SHALL BE WSEC COMPLIANT. (TYPICAL)
 - Ⓔ POINT OF CONNECTION TO EXISTING. VERIFY EXACT POINT OF CONNECTION AT SITE. (TYPICAL)
 - Ⓕ SPIN-IN VOLUME DAMPER
 - Ⓖ REROUTE EXISTING REFRIGERANT PIPING AND POWER AROUND NEW CORRIDOR FRAMING AS REQUIRED.
 - Ⓗ OUTDOOR HEAT PUMP MOUNTED ON PAD OR WALL RACK. UNIT SHALL BE WITHIN SOFT OF INDOOR UNIT. VERIFY EXACT LOCATION AT SITE. COORDINATE WITH MG AND EC.



1ST LEVEL FLOOR PLAN - HVAC
SCALE: 1/8" = 1'-0"



City of Puyallup
Development & Permitting Services
ISSUED PERMIT

Building	Planning
Engineering	Public Works
Fire	Traffic



**ABOSEIN
ENGINEERING
L.L.C.**

MECHANICAL - ELECTRICAL
LEED - PLUMBING -
FIRE PROTECTION

18465 NE 65TH ST.
#101
REDMOND, WA 98052

OFFICE: (425) 462-9441
FAX: (425) 462-9451

EMAIL:
CSservice@abosein.com

WEBSITE:
www.abosein.com



ADDITION TO HAMPTON INN &
SUITES
PUYALLUP, WA 98471

3RD LEVEL FLOOR PLAN
HVAC

Revisions:
 01/24/2024
 02/03/2024 HEAT TRACING ADD.
 02/14/2024 ELEC REVISIONS

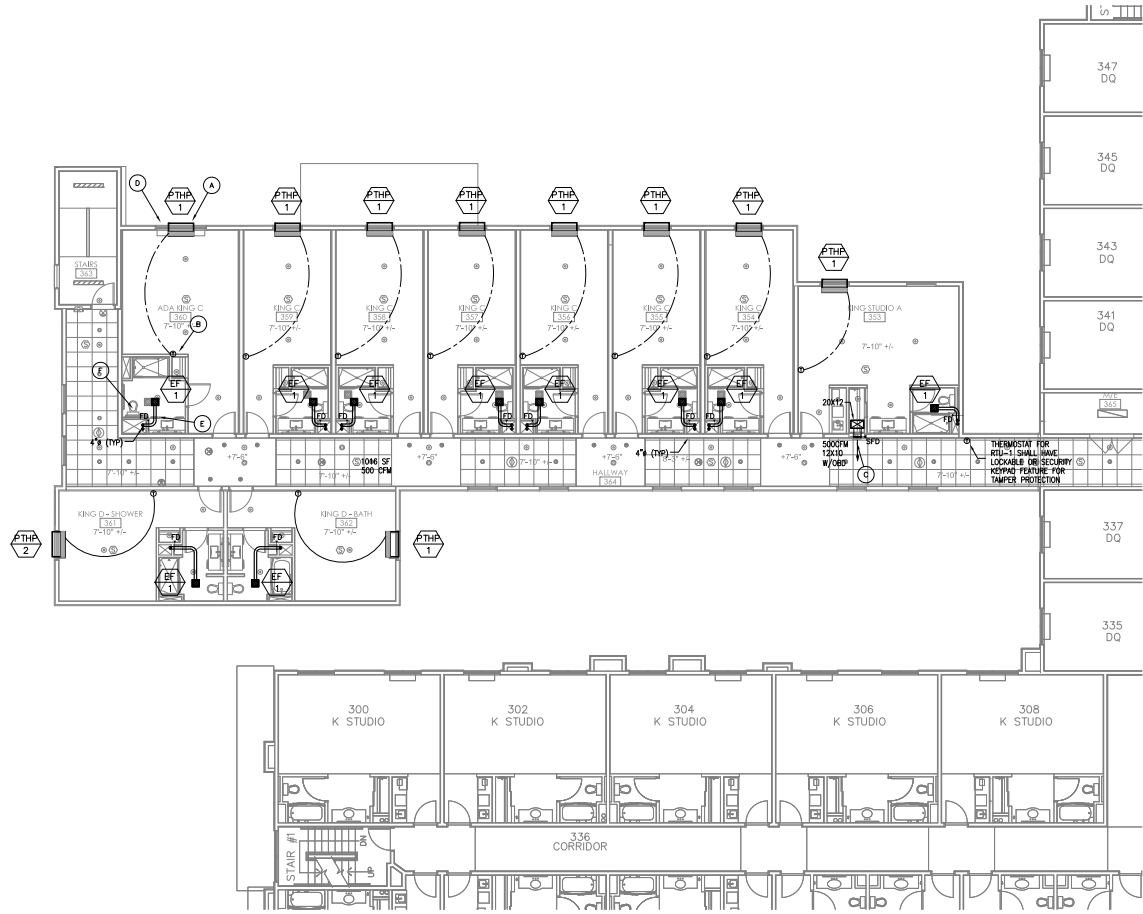
Job No.: 219007
Date: 01/03/2024

M3.0

City of Puyallup
Development & Permitting Services
ISSUED PERMIT

Building	Planning
Engineering	Public Works
Fire	Traffic

- KEYED PLAN NOTES:**
- A THRU WALL HEAT PUMP IN WALL SLEEVE. OUTSIDE AIR DOOR TO REMAIN OPEN. UNIT WITH REMOTE TSTAT, HARNOWED SUB-SIZE KIT AND CONDENSATE DRAIN KIT. METAL CONDENSATE PIPING SHALL BE INSULATED WITH CLOSED CELL ELASTOMERIC INSULATION UNIT TO ENERGIZE VIA OCCUPANCY SENSOR (VERIFY W/OWNER) (TYPICAL)
 - B WALL MOUNTED THERMOSTAT. MOUNT AT 48" AFF IN ADA UNITS. (TYPICAL)
 - C FRONT ACCESS TYPE COMBINATION FIRE/SMOKE DAMPER. OVERSIZE SUPPLY GRILLE TO CORRIDOR ACTUATOR COMPARTMENT (TYPICAL). SEE DETAIL A/M6.0
 - D SEE PLUMBING DRAWINGS FOR CONDENSATE PIPING (TYP).
 - E DUCTWORK SHALL BE FABRICATED AND SUPPORTED PER SMACNA LATEST EDITION OF DUCT CONSTRUCTION STANDARDS. SEE (TYP).
 - F SEE FIRE DAMPER DETAIL C/M6.0



3RD LEVEL FLOOR PLAN - HVAC
SCALE: 1/8" = 1'-0"



NORTH



**ABOSSEIN
ENGINEERING
L.L.C.**

MECHANICAL - ELECTRICAL
LEED - PLUMBING -
FIRE PROTECTION

18465 NE 65TH ST.
#101
REDMOND, WA 98052

OFFICE: (425) 462-9441
FAX: (425) 462-9451

EMAIL:
CSservice@abossein.com

WEBSITE:
www.abossein.com



ADDITION TO HAMPTON INN &
SUITES

PUYALLUP, WA, 98477

1515 S. MERIDIAN

4TH LEVEL FLOOR PLAN
HVAC

SHEET TITLE:

Revisions:

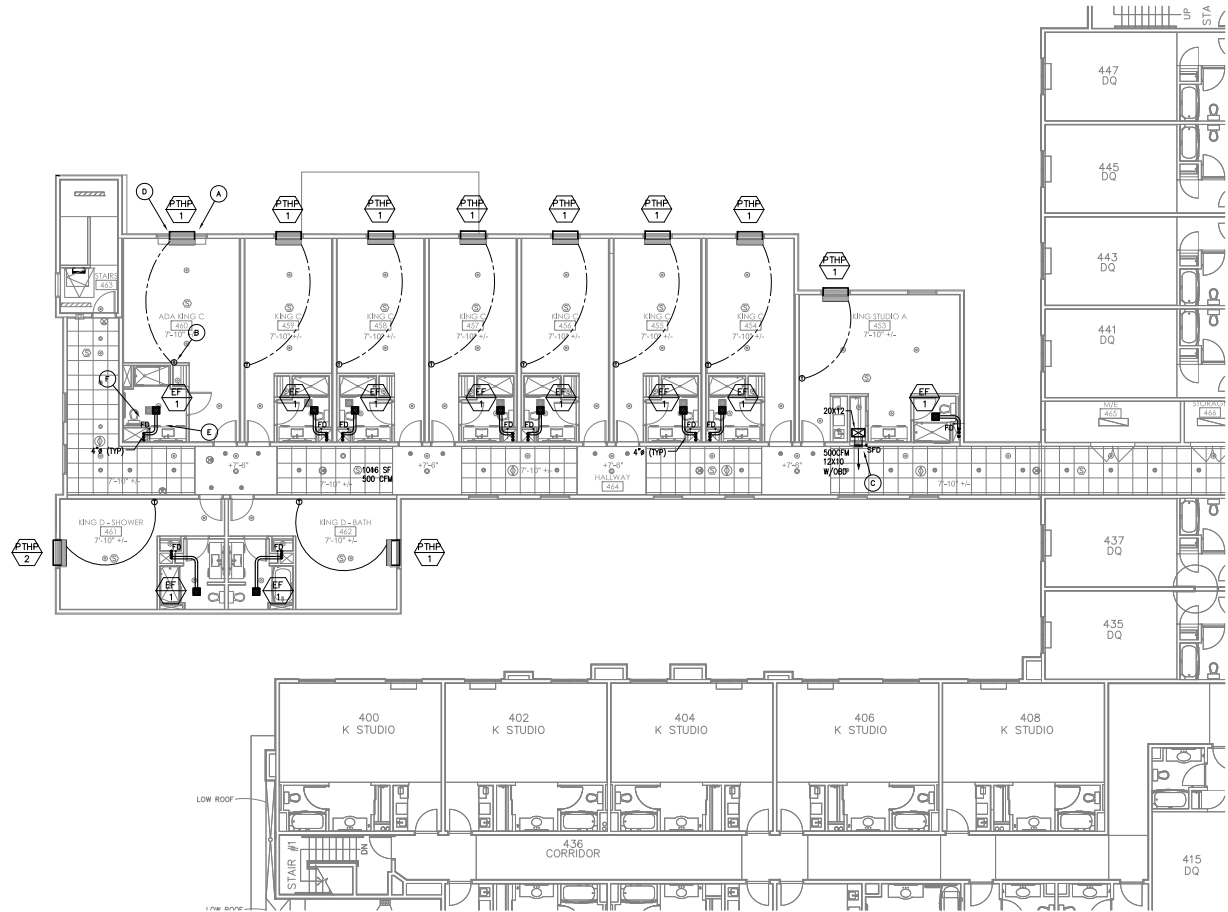
- △ 01/24/2024
- △ 02/03/2024 HEAT TRACING ADD.
- △ 02/14/2024 ELEC REVISIONS

Job No.: 219007

Date: 01/03/2024

M4.0

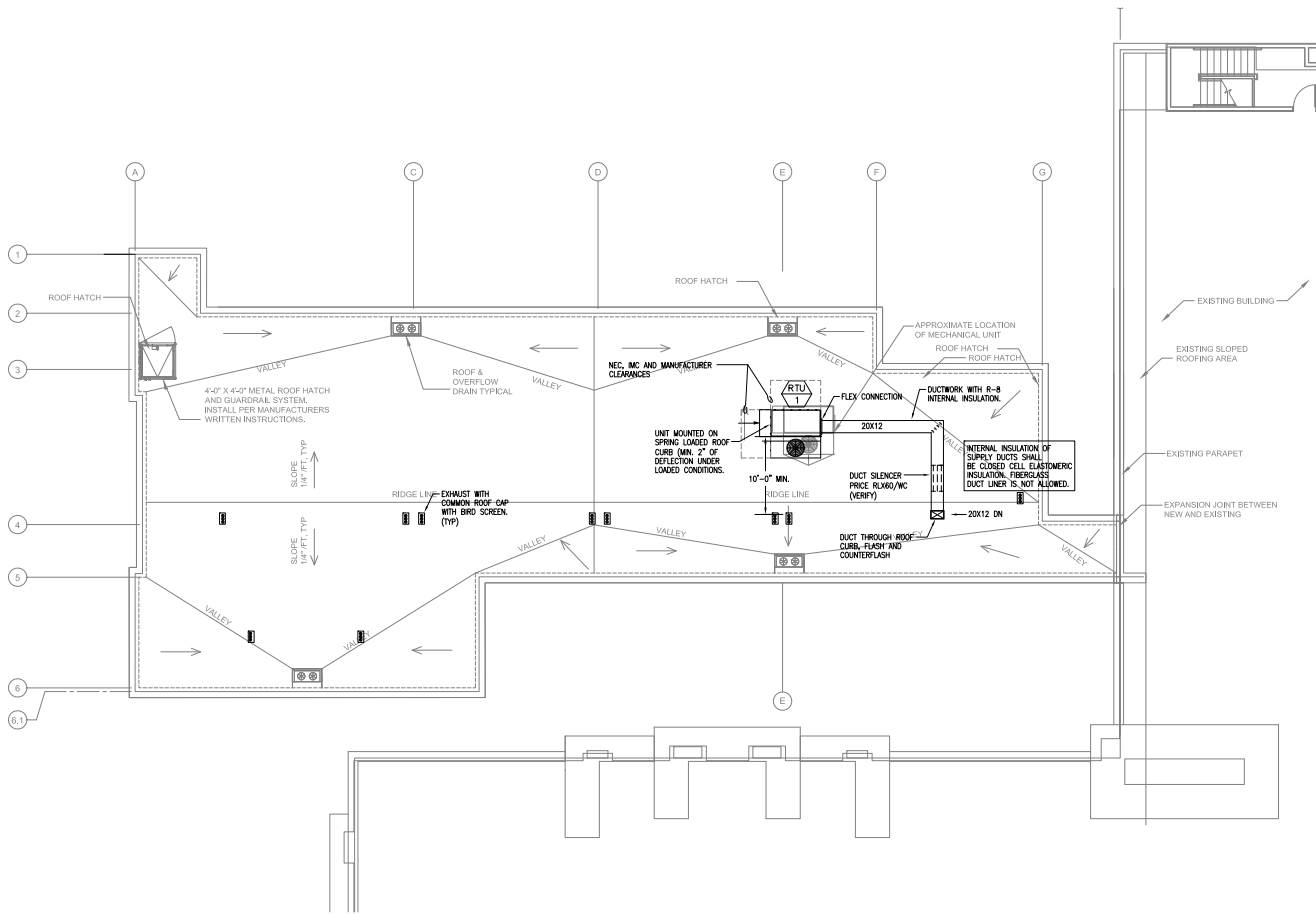
- KEYED PLAN NOTES:**
- A THRU WALL HEAT PUMP IN WALL SLEEVE. OUTSIDE AIR DOOR TO REMAIN OPEN UNIT WITH REMOTE TSTAT, HANGROB® SUB-BASE KIT AND CONDENSATE DRAIN KIT. METAL CONDENSATE PIPING SHALL BE INSULATED WITH CLOSED CELL ELASTOMERIC INSULATION UNIT TO ENERGIZE VIA OCCUPANCY SENSOR (VERIFY W/OWNER) (TYPICAL)
 - B WALL MOUNTED THERMISTAT MOUNT AT 48" AFF IN ADA UNITS (TYPICAL)
 - C FRONT ACCESS TYPE COMBINATION FIRE/SMOKE DAMPER OVERSIZE SUPPLY GRILLE TO CONCEAL ACTUATOR COMPARTMENT (TYPICAL). SEE DETAIL A/M6.0
 - D SEE PLUMBING DRAWINGS FOR CONDENSATE PIPING (TYP)
 - E DUCTWORK SHALL BE FABRICATED AND SUPPORTED PER SMACNA LATEST EDITION OF EXACT CONSTRUCTION STANDARDS. SEE (TYP)
 - F SEE FIRE DAMPER DETAIL C/M6.0



4TH LEVEL FLOOR PLAN - HVAC

SCALE: 1/8" = 1'-0"





ROOF PLAN - HVAC
 SCALE: 1/8" = 1'-0"



ABOSSEIN ENGINEERING L.L.C.
 MECHANICAL - ELECTRICAL
 LEAD - PLUMBING -
 FIRE PROTECTION
 18465 NE 65TH ST.
 #101
 REDMOND, WA 98052
 OFFICE: (425) 462-9441
 FAX: (425) 462-9451
 EMAIL:
 CService@abossein.com
 WEBSITE:
 www.abossein.com



ADDITION TO HAMPTON INN & SUITES
 PUYALLUP, WA, 98471

ROOF PLAN HVAC

SHEET TITLE:

Revisions:	
△	01/24/2024
△	02/03/2024 HEAT TRACING ADD.
△	02/14/2024 ELEC REVISIONS

Job No.: 219007
 Date: 01/03/2024

M5.0

City of Puyallup
 Development & Permitting Services
 ISSUED PERMIT

Building	Planning
Engineering	Public Works
Fire	Traffic

