

THE APPROVED CONSTRUCTION PLANS AND ALL ENGINEERING MUST BE POSTED ON THE JOB AT ALL INSPECTIONS IN A VISIBLE AND READILY ACCESSIBLE LOCATION.

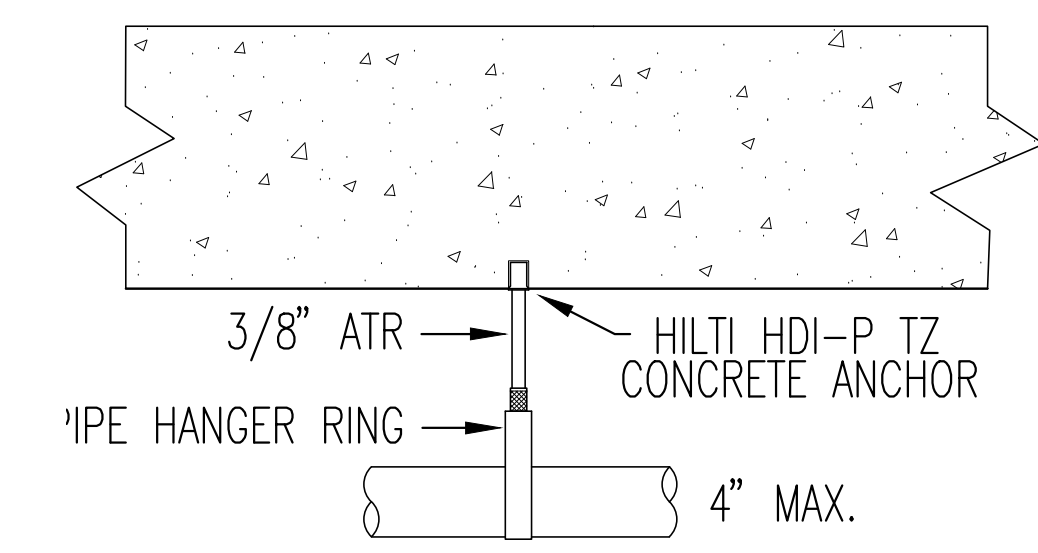
Approval of submitted plans is not an approval of omissions or oversight by this office or noncompliance with any applicable regulations of local government. The contractor is responsible for making sure that the building complies with all applicable building codes and regulations of the local government.

City of Puyallup
 Development & Permitting Services
ISSUED PERMIT

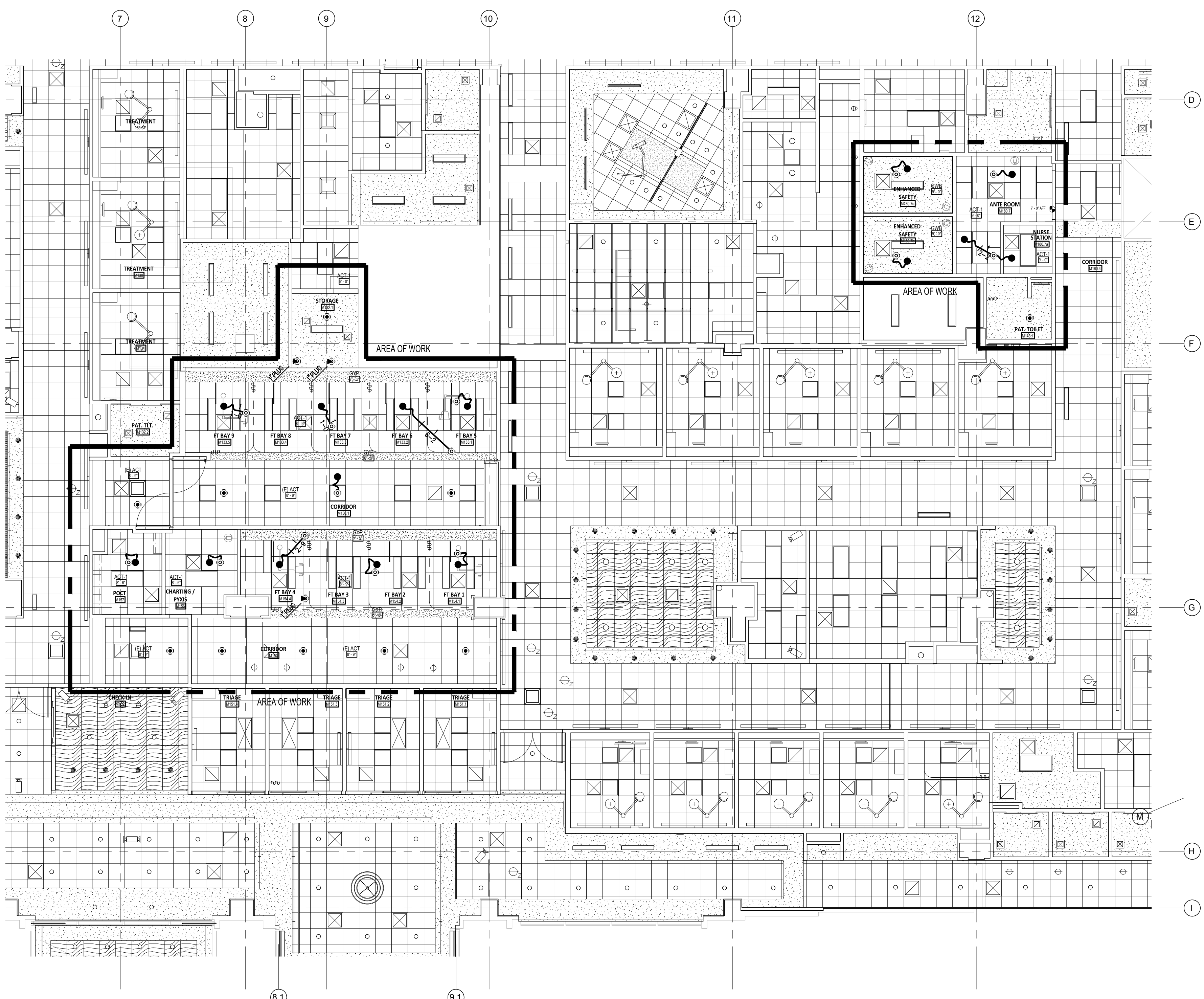
Building	Planning
Engineering	Public Works
Fire	Traffic

HANGER LEGEND

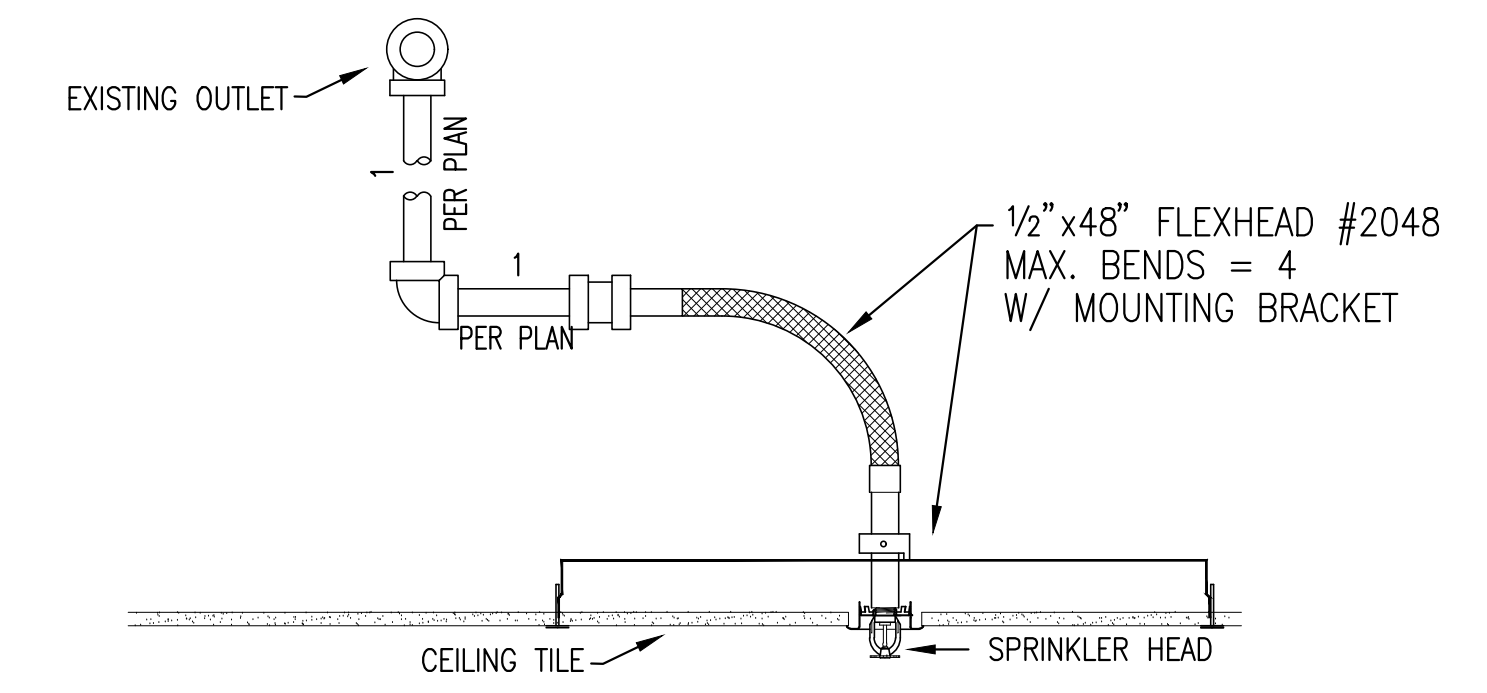
A	"U" HOOK
B	COACH SCREW ROD
D	BM. CLAMP W/ "STRAP
E	EYELET
F	FLUSH SHELL
G	CEILING FLANGE
H	SIDE BEAM BRACKET
K	SHORT CLIP
M	ALL THREAD ROD
N	TOGGLE NUT
P	POWDER DRIVEN STUD
R	EXPANSION BOLT
S	PIPE SPIKE
T	TRUSS EYELET
U	
V	
W	
X	
Y	
Z	



TYPICAL HANGER DETAIL
 SCALE: NTS



PARTIAL 1ST FLR FIRE SPRINKLER PLAN
 SCALE: 1/8"=1'-0"



TYPICAL FLEXIBLE SPRINKLER DETAILS
 SCALE: N/D/E

SCOPE OF WORK

ADD AND RELOCATE SPRINKLERS FOR NEW TENANT IMPROVEMENT WALL AND CEILING LAYOUT.

GENERAL NOTES

- DENOTES EXISTING FIRE SPRINKLER PIPING.
- DENOTES NEW FIRE SPRINKLER PIPING.
- ⊕ DENOTES EXISTING FIRE SPRINKLER TO MOVE.
- ⊕ DENOTES EXISTING FIRE SPRINKLER PENDENT TO REMAIN.

STATE CERTIFICATION

WASHINGTON STATE
 CERTIFICATE OF COMPETENCY
 FIRE PROTECTION SPRINKLER SYSTEMS
 Matthew Greene
 9819-0311-C Level 3
 Patriot Fire Protection, Inc.
 PATRIOTSPRINKLER.COM
 Date: 3/6/24

SPRINKLER LEGEND

SPRINKER ORIFICE SIZES AND TYPE	SPRINKLER ORIFICE SIZES AND TYPE	TEMP RATING	SYMBOL	ORIFICE SIZE
1/2" SPRAY	1/2" SPRAY	165°	○	1/2"
3/4" SPRAY	3/4" SPRAY	212°	○	3/4"
1" SPRAY	1" SPRAY	286°	○	1"
1 1/2" SPRAY	1 1/2" SPRAY	350°	○	1 1/2"
1" SIDEWALL	1" SIDEWALL	500°	○	1"
1 1/2" DRY TYPE	1 1/2" DRY TYPE		○	1 1/2"

FITTING LEGEND

P	PIPE-0-LET
F	PLAIN END FIT FITTING
SN	GROOVED SHAPED NIPPLE
TSN	THREADED SHAPED NIPPLE

APPROVAL REQUIRED
 CITY OF PUYALLUP

SPRINKLER HEADS USED

SYM	MANUF	MODEL	TYPE	THREAD SIZE	ORIFICE SIZE	HEAD FINISH	ESCUTCH FINISH	TEMP	QTY	
●	RELIABLE	F17R56	OR RECESSED	1/2"	K=5.6	WHITE	WHITE	155F	15	
									TOTAL	15

QUALITY CONTROL BY: _____ DATE: _____
 APPROVED FOR FABRICATION BY: _____ DATE: _____

GENERAL NOTES

- ALL MATERIAL AND EQUIPMENT TO BE NEW AND LIST ULATED OR FM APPROVED.
- PIPING DIMENSIONS ARE CENTER TO CENTER EXCEPT RISERS AND DIMENSIONS SHOWN THUSLY (1-6) WHICH ARE END TO END.
- EARTHQUAKE BRACING SHALL BE PROVIDED IN ACCORDANCE WITH NFPA PAMPHLET NO. 13, APPLICABLE EDITION.
- PIPE HANGERS AND METHOD OF HANGING TO BE IN ACCORDANCE WITH NFPA PAMPHLET NO. 13, APPLICABLE EDITION.
- PIPING SHALL BE IN ACCORDANCE WITH NFPA PAMPHLET NO. 13, APPLICABLE EDITION.
- JOINING OF PIPE AND FITTINGS, THREADED & WELDED, SHALL BE IN ACCORDANCE WITH NFPA PAMPHLET NO. 13, APPLICABLE EDITION.
- OWNER TO PROVIDE ADEQUATE HEAT IN AREAS PROTECTED BY A WET PIPE SPRINKLER SYSTEM TO PREVENT WATER IN PIPES FROM FREEZING.
- ALL WIRING OF ELECTRICAL DEVICES (IF REQUIRED) TO BE PROVIDED BY OTHERS.
- PAINTING OF PIPE & EQUIPMENT (IF REQUIRED) TO BE PROVIDED BY OTHERS.
- FLOORING OF PIPE & EQUIPMENT (IF REQUIRED) TO BE PROVIDED BY OTHERS.

DESIGN CRITERIA

- DESIGN PER NFPA 13 - LIGHT HAZARD OFFICE.

PIPE NOTES

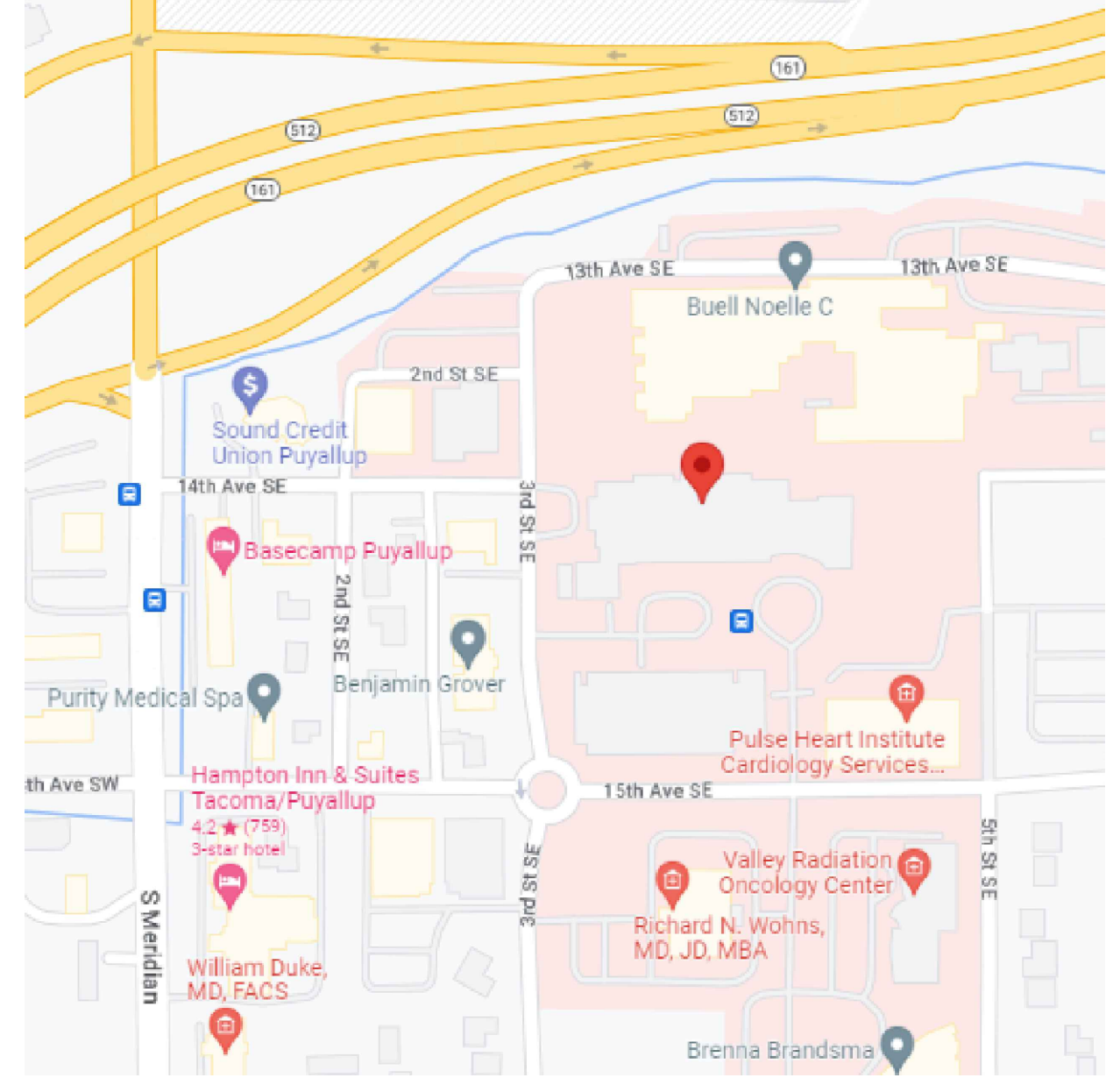
- ALL NEW THREADED PIPE TO BE SCH 40 - BLACK.
- ALL NEW WELDED PIPE TO BE SCH 10 - BLACK.

REVISIONS

NO	DATE	BY	DESCRIPTION

CONTRACT WITH:
SELLEN CONSTRUCTION
 PO BOX 9970
 SEATTLE, WA 98109

PROJECT NAME:
MULTICARE GSH ED TI
 401 15TH AVE SE
 PUYALLUP, WA 98372



VICINITY MAP
 SCALE: NTS

PATRIOT FIRE PROTECTION, INC.
 2707 70TH AVE E
 TACOMA, WA 98424
 TEL: (253) 926-2290
 FAX: (253) 922-6150

DESIGNER	MATT GREENE	SHEET	FP-1
DATE	3/6/24	1 OF 1	
JOB NO.	12-23619		