

STEP BY STEP GATEWAY BUILDING GREENHOUSES FIRE ALARM ADDITION

3303 8th AVE SE
PUYALLUP, WA 98372
FIRE ALARM SYSTEM

EVERGREEN FIRE AND SECURITY
CERTIFIED BY UNDERWRITERS LABORATORIES



EVERGREEN FIRE AND SECURITY
2111 SOUTH 90TH STREET
TACOMA, WA. 98444
253-627-3794

NICET CERTIFICATION INFO	
NICET #	114223
LEVEL	IV
SUB-FIELD	FIRE ALARMS
EXPIRATION DATE	08/01/26
NAME	BRIAN LINDBO

GENERAL NOTES

REVISIONS/NOTES

REVISION	DATE	CAD/DESIGN

JOB DETAILS

DESIGNED BY:	B.LINDBO
DRAWN BY:	A.MURPHREE
CHECKED BY:	D.MOLMEN
CREATION DATE:	01/24/2022
DRAWING SCALE:	VARIES

JOB NAME

STEP BY STEP GATEWAY

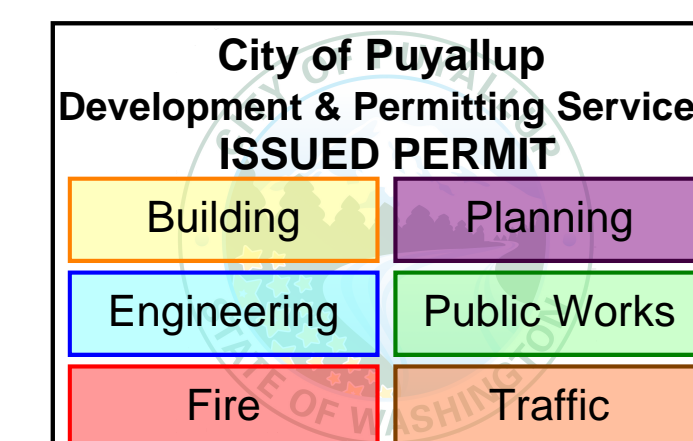
TITLE PAGE

PAGE NUMBER

FA-000

01 OF 09

DRAWING SHEET INDEX	
SHEET NO.	DESCRIPTION
FA-000	COVER SHEET
FA-001	PROJECT INFORMATION
FA-100	STEP BY STEP GATEWAY - SITE PLAN
FA-101	STEP BY STEP GATEWAY - GREENHOUSE FLOOR PLAN
FA-500	PANEL DETAILS
FA-501	CONNECTION / DEVICE DETAILS
FA-600	RISER
FA-601	MATRIX
FA-602	BATTERY CALCS



SUBMITTAL

City of Puyallup
Fire
REVIEWED
FOR
COMPLIANCE

4/4/2024
1:40PM



THE APPROVED CONSTRUCTION PLANS AND ALL ENGINEERING MUST BE POSTED ON THE JOB AT ALL INSPECTIONS IN A VISIBLE AND READILY ACCESSIBLE LOCATION.

Approval of submitted plans is not an approval of omissions or oversight by this office or noncompliance with any applicable regulations of local government. The contractor is responsible for making sure that the building complies with all applicable building codes and regulations of the local government.

GENERAL SYSTEM NOTES

- METALLIC RACEWAY SHALL BE USED IF REQUIRED BY CODE.
- ALL RACEWAYS MUST BE FREE OF MOISTURE.
- REFER TO EVERGREEN FIRE & SECURITY (EFS) FIRE DATA SHEETS FOR PROPER TYPE AND SIZES OF REQUIRED DEVICE MOUNTING BOXES. ELECTRICAL CONTRACTOR IS RESPONSIBLE FOR PROPER INSTALLATION OF ALL DEVICES.
- AC VOLTAGE IS NOT PERMITTED IN THE SAME RACEWAY AS FIRE ALARM WIRING.
- UNRELATED (NON-FIRE) WIRING SHALL NOT BE IN THE SAME RACEWAY AS FIRE ALARM WIRING.
- ALL CONTRACTOR FIELD WIRING MUST ENTER TOP AND/OR BOTTOM RIGHT OF FIRE ALARM CONTROL PANEL ONLY. SEE DATA SHEET.
- ALL FIRE ALARM WIRING SHALL TEST FREE OF OPENS, SHORTS, AND GROUNDS.
- ALL WIRES SHALL BE LABELED AND TAGGED.
- ELECTRICAL CONTRACTOR IS RESPONSIBLE FOR PROVIDING AND INSTALLING ALL CONDUIT AND BACK BOXES. EFS WILL PROVIDE ALL SPECIALTY BACK BOXES FOR ELECTRICAL CONTRACTOR INSTALLATION.
- ALL WIRE SHALL MEET ALL APPLICABLE NATIONAL ELECTRICAL CODE ARTICLES FOR FIRE ALARM AND LOW VOLTAGE WIRING.

FIRE SYSTEM DESIGNED BY: EVERGREEN FIRE & SECURITY
TACOMA, WASHINGTON
 FIRE SYSTEM INSTALLED BY: EVERGREEN FIRE & SECURITY
TACOMA, WASHINGTON
 FIRE SYSTEM EQUIPMENT BY: EVERGREEN FIRE & SECURITY
TACOMA, WASHINGTON

WIRE CHART

CIRCUIT TYPE	CABLE TYPE	NO.	GAUGE	COLOR	NOTES
ADDRESSABLE INITIATING CIRCUIT	FPLR	A	18/2	RED JACKET	
INDICATING CIRCUIT - BELL CIRCUIT	FPLR	B	12/2	RED JACKET	
INDICATING CIRCUIT - FA NAC	FPLR	N	14/2	RED JACKET	
ANNUNCIATOR CIRCUIT	FPLR	L	16/4	RED JACKET	
REMOTE LED CIRCUIT	FPLR	R	16/2	RED JACKET	
REMOTE TEST SWITCH	FPLR	T	16/4	RED JACKET	

SYMBOL INDEX

SYMBOL	DESCRIPTION	MANUFACTURE	MODEL NUMBER	BACK BOX	QTY
	FIRE ALARM CONTROL PANEL	SILENT KNIGHT	IFP-300	EPS TO SUPPLY	1
	REMOTE ANNUNCIATOR	SILENT KNIGHT	00RA-1000	EPS TO SUPPLY	1
	REMOTE TEST SWITCH	SILENT KNIGHT	RTS151KEY	4 SQ. DEEP BOX SINGLE GANG MUD RING	1
	ADDRESSABLE HEAT DETECTOR	SILENT KNIGHT	IDP-HEAT-W	SINGLE GANG BOX	1
	PHOTOELECTRIC SMOKE & SENSOR BASE (A BY SMOKE INDICATES ABOVE T-BAR CEILING)	SILENT KNIGHT	IDP-PHOTO-W B300-6	4 SQ. DEEP BOX SINGLE GANG MUD RING	32
	INTELLIGENT DUCT SMOKE DETECTOR	SILENT KNIGHT	DNR IDP-PHOTO-R-W	EPS TO SUPPLY	1
	DOUBLE ACTION ADDRESSABLE PULL STATION	SILENT KNIGHT	IDP-PULL-DA	4 SQ. DEEP BOX SINGLE GANG MUD RING	5
	SINGLE INPUT MONITOR MODULE	SILENT KNIGHT	IDP-MONITOR	4 SQ. DEEP BOX	2
	DUAL INPUT MONITOR MODULE	SILENT KNIGHT	IDP-MONITOR-2	4 SQ. DEEP BOX	4
	CONTROL RELAY MODULE	SILENT KNIGHT	IDP-RELAY	4 SQ. DEEP BOX	1
	CEILING MOUNT HORN/STROBE	SYSTEM SENSOR	PC2WL	4 SQ. DEEP BOX SINGLE GANG MUD RING	14
	WEATHERPROOF HORN/STROBE	SYSTEM SENSOR	P2RK	EPS TO SUPPLY	1
	FIRE STROBE, WALL	SYSTEM SENSOR	SWL	5 SQ. BOX 4 SQ. MUD RING	2
	WEATHERPROOF SPRINKLER BELL	SYSTEM SENSOR	SSM-24-10	EPS TO SUPPLY	1
	LED INDICATOR	SYSTEM SENSOR	RA100Z	4 SQ. DEEP BOX SINGLE GANG MUD RING	9
	FLOW SWITCH (F.B.O.)	F.B.O.	F.B.O.	F.B.O.	1
	TAMPER SWITCH (F.B.O.)	F.B.O.	F.B.O.	F.B.O.	4
	POST INDICATOR VALVE (F.B.O.)	F.B.O.	F.B.O.	F.B.O.	1
	LOW AIR	F.B.O.	F.B.O.	F.B.O.	1
	PRESSURE SWITCH	F.B.O.	F.B.O.	F.B.O.	1



EVERGREEN FIRE AND SECURITY
2111 SOUTH 90TH STREET
TACOMA, WA. 98444
253-627-3794

NICET CERTIFICATION INFO

NICET #	114223
LEVEL	IV
SUB-FIELD	FIRE ALARMS
EXPIRATION DATE	08/01/26
NAME	BRIAN LINDBO

GENERAL NOTES

REVISIONS/NOTES

REVISION	DATE	CAD/DESIGN

JOB DETAILS

DESIGNED BY:	B.LINDBO
DRAWN BY:	A.MURPHREE
CHECKED BY:	D.MOLMEN
CREATION DATE:	01/24/2022
DRAWING SCALE:	VARIES

JOB NAME

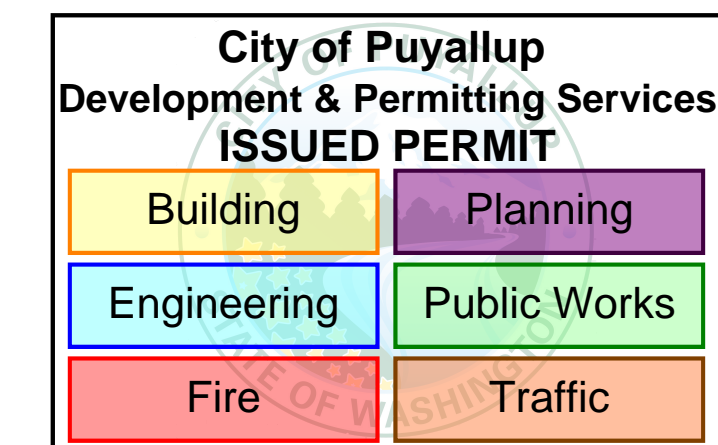
STEP BY STEP GATEWAY

PROJECT INFORMATION

PAGE NUMBER

FA-001

02 OF 09



SUBMITTAL

PROJECT INFORMATION



EVERGREEN FIRE AND SECURITY
2111 SOUTH 90TH STREET
TACOMA, WA. 98444
253-627-3794

NICET CERTIFICATION INFO	
NICET #	114223
LEVEL	IV
SUB-FIELD	FIRE ALARMS
EXPIRATION DATE	08/01/26
NAME	BRIAN LINDBO

GENERAL NOTES

REVISIONS/NOTES

REVISION	DATE	CAD/DESIGN

JOB DETAILS

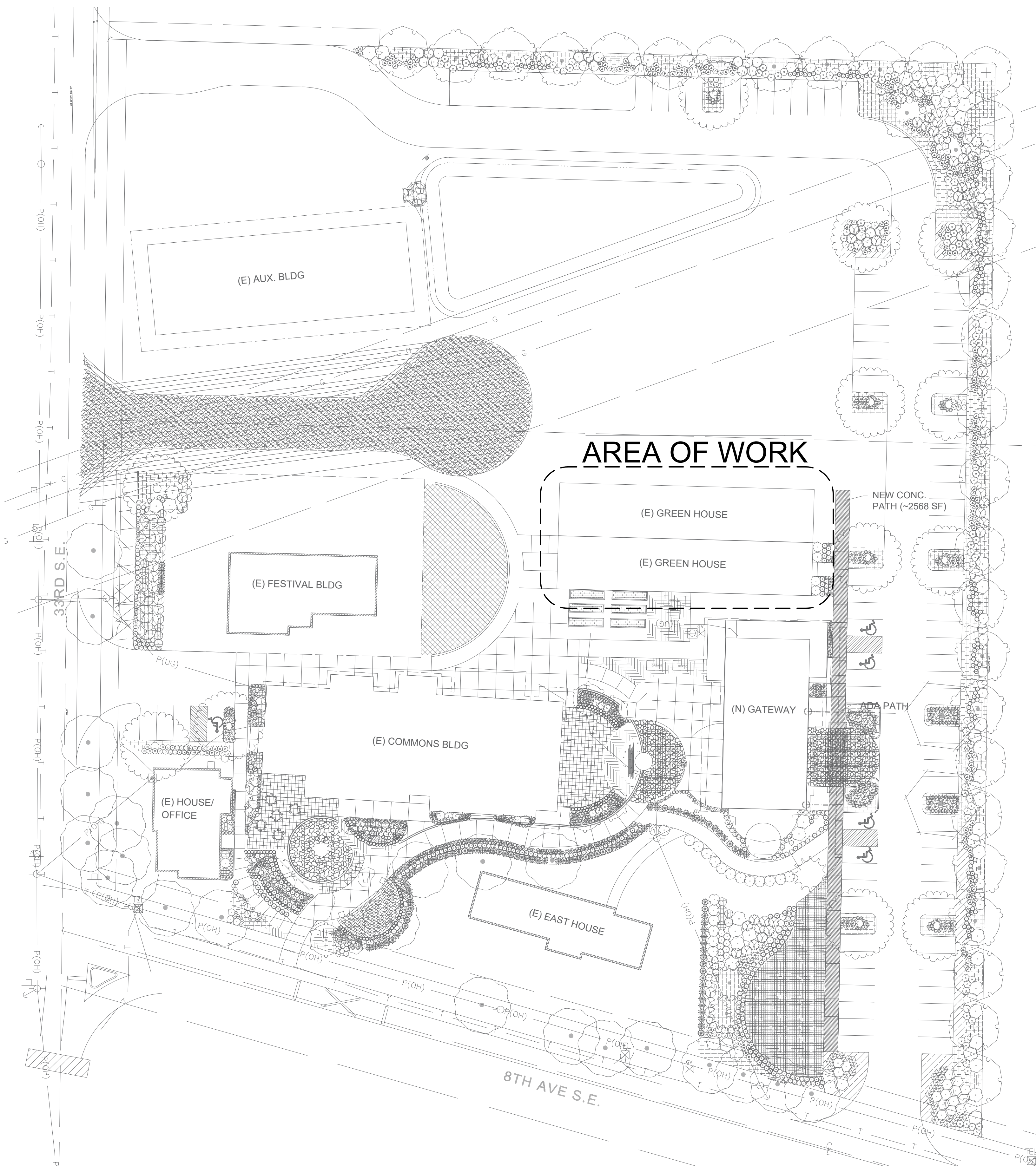
DESIGNED BY:	B.LINDBO
DRAWN BY:	A.MURPHREE
CHECKED BY:	D.MOLMEN
CREATION DATE:	01/24/2022
DRAWING SCALE:	VARIES

JOB NAME

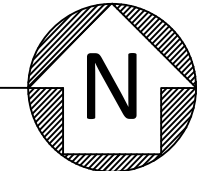
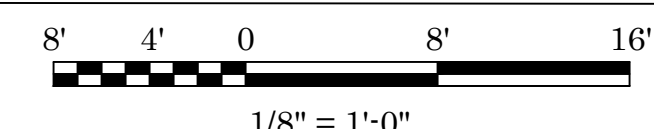
STEP BY STEP GATEWAY
STEP BY STEP GATEWAY - SITE PLAN

PAGE NUMBER

FA-100
03 OF 09



STEP BY STEP GATEWAY - SITE PLAN



City of Puyallup
Development & Permitting Services
ISSUED PERMIT

Building	Planning
Engineering	Public Works
Fire	Traffic

SUBMITTAL



EVERGREEN FIRE AND SECURITY
2111 SOUTH 90TH STREET
TACOMA, WA. 98444
253-627-3794

NICET CERTIFICATION INFO	
NICET #	114223
LEVEL	IV
SUB-FIELD	FIRE ALARMS
EXPIRATION DATE	08/01/26
NAME	BRIAN LINDBO

- GENERAL NOTES
- 1 KITCHEN HOOD ANSUL SYSTEM MONITORING MODULE.
 - 2 TWO PHONE LINES ARE REQUIRED FOR MOITORING VIA PHONE LINES.
 - 3 THIS AREA IS OPEN TO STRUCTURE
 - 4 THIS AREA ABOVE THE RESTROOM IS THE ONLY ATTIC SPACE IN THIS BUILDING

REVISIONS/NOTES

REVISION	DATE	CAD/DESIGN

JOB DETAILS

DESIGNED BY:	B.LINDBO
DRAWN BY:	A.MURPHREE
CHECKED BY:	D.MOLMEN
CREATION DATE:	01/24/2022
DRAWING SCALE:	VARIES

JOB NAME

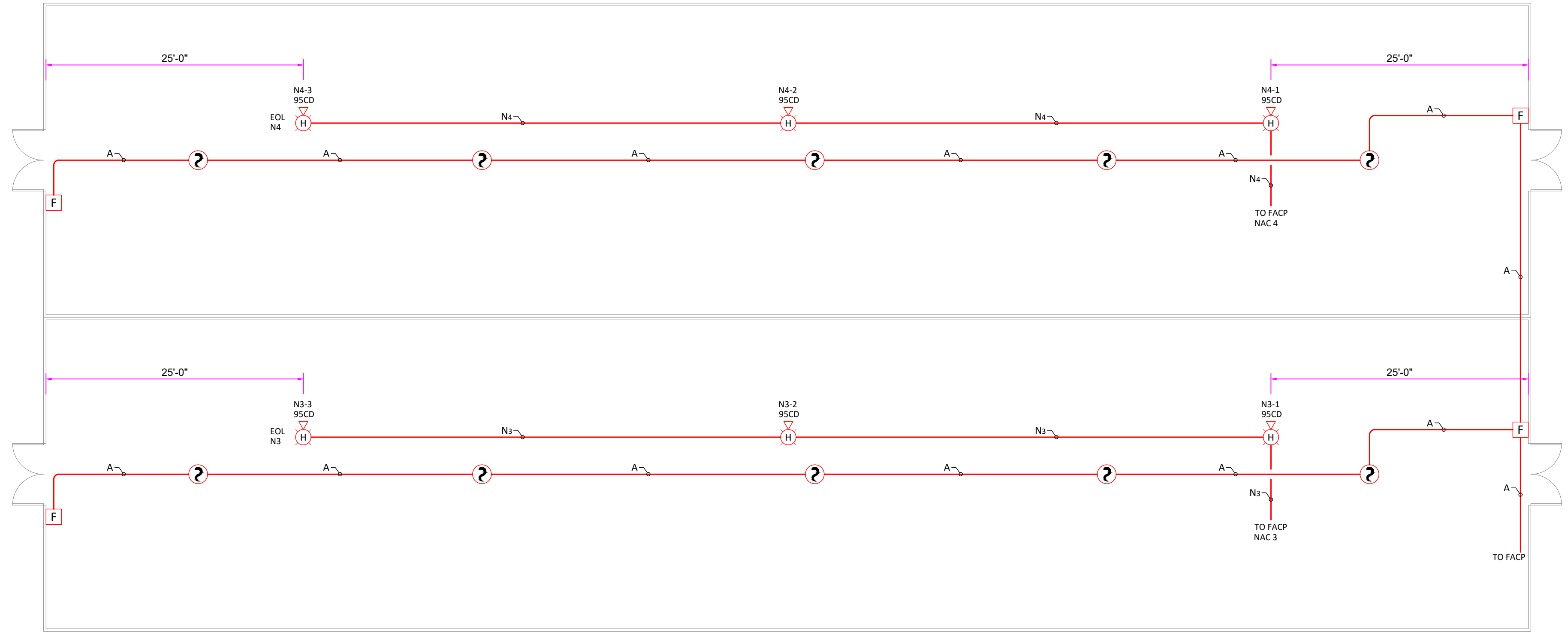
STEP BY STEP GATEWAY

STEP BY STEP GATEWAY - FLOOR PLAN

PAGE NUMBER

FA-101

04 OF 09



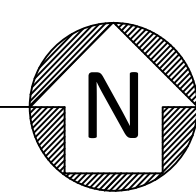
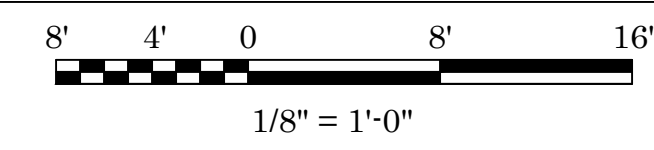
SYMBOL LEGEND

SYMBOL	DESCRIPTION	QTY
⊗	PHOTOELECTRIC SMOKE & SENSOR BASE (A BY SMOKES INDICATES ABOVE T-BAR CEILING)	10
F	DOUBLE ACTION ADDRESSABLE PULL STATION	4
⊗	CEILING MOUNT HORN/STROBE	6

WIRE CHART

CABLE USE	CABLE TYPE	GAUGE	NO.	COLOR
ADDRESSABLE INITIATING CIRCUIT	FPLR			RED JACKET
INDICATING CIRCUIT - BELL CIRCUIT	FPLR	12	12	RED JACKET
INDICATING CIRCUIT - FA NAC	FPLR	14	14	RED JACKET
ANNUNCIATOR CIRCUIT	FPLR	16	16	RED JACKET
REMOTE LED CIRCUIT	FPLR	16	16	RED JACKET
REMOTE TEST SWITCH	FPLR	16	16	RED JACKET

STEP BY STEP GATEWAY - GREENHOUSE FLOOR PLANS



SUBMITTAL



Evergreen
FIRE AND SECURITY

EVERGREEN FIRE AND SECURITY
2111 SOUTH 90TH STREET
TACOMA, WA. 98444
253-627-3794

NICET CERTIFICATION INFO	
NICET #	114223
LEVEL	IV
SUB-FIELD	FIRE ALARMS
EXPIRATION DATE	08/01/26
NAME	BRIAN LINDBO

GENERAL NOTES

REVISIONS/NOTES	
REVISION	
DATE	CAD/DESIGN

JOB DETAILS	
DESIGNED BY:	B.LINDBO
DRAWN BY:	A.MURPHREE
CHECKED BY:	D.MOLMEN
CREATION DATE:	01/24/2022
DRAWING SCALE:	VARIES

JOB NAME

STEP BY STEP GATEWAY

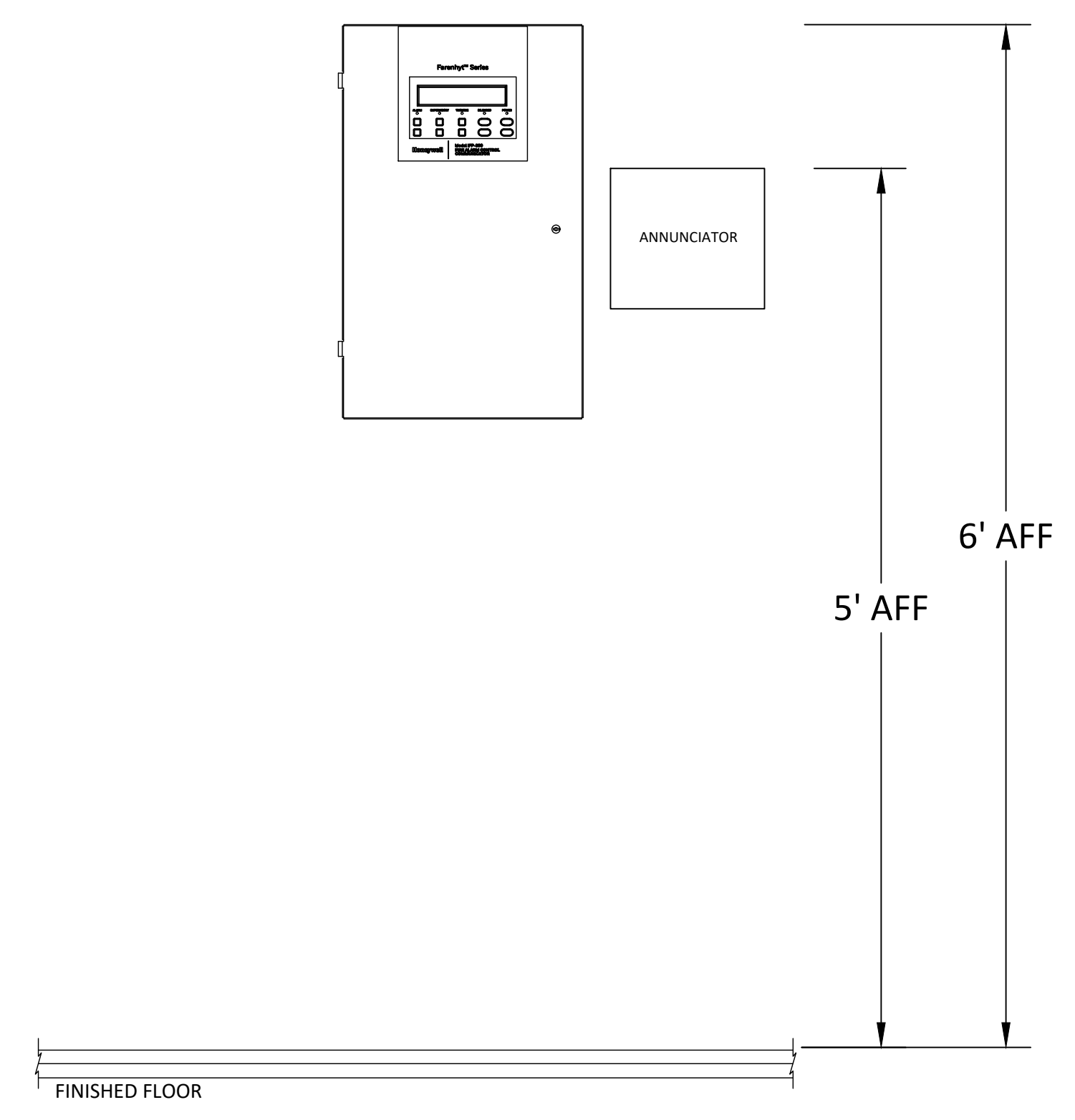
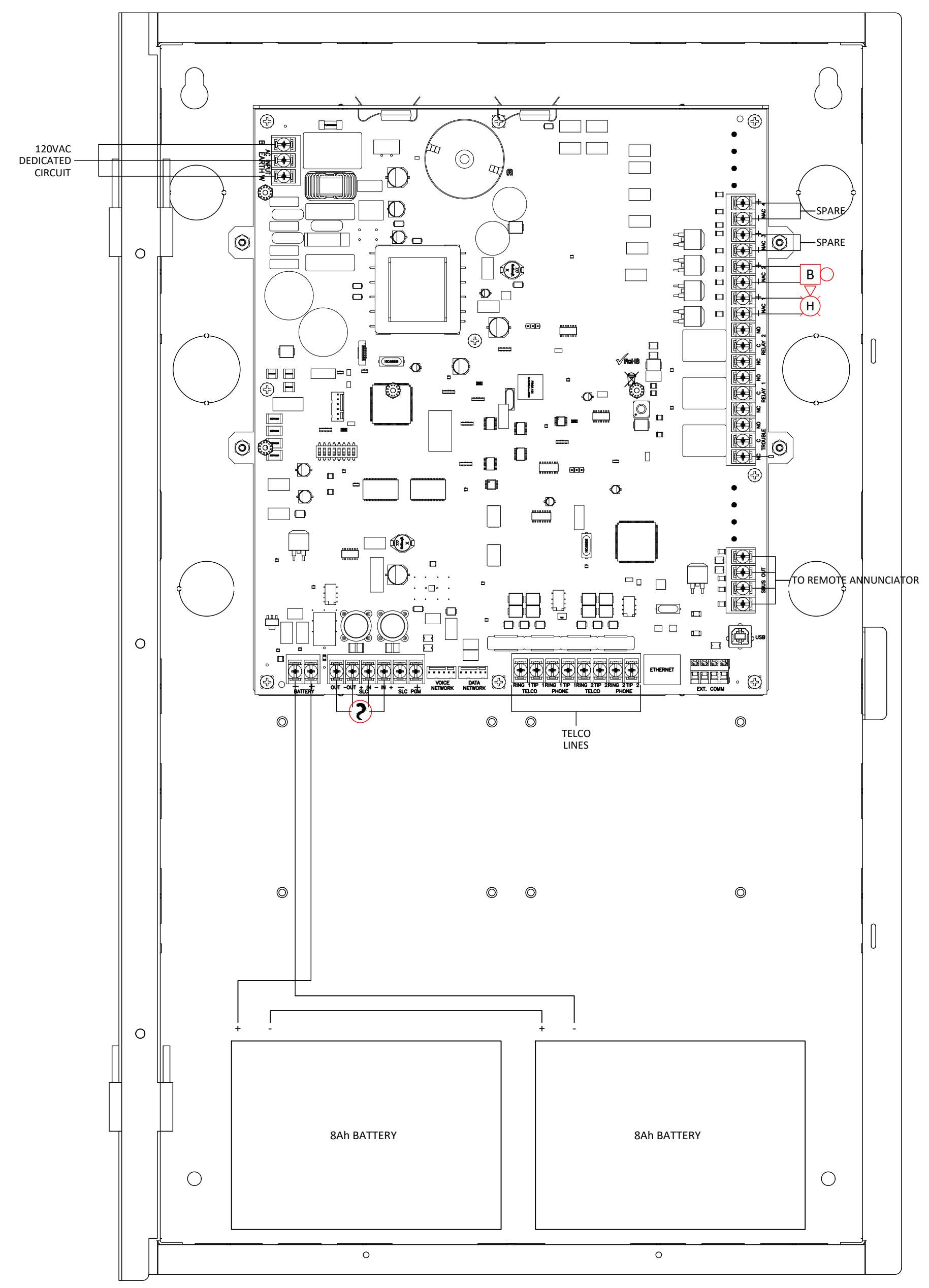
PANEL DETAILS

PAGE NUMBER

FA-500

05 OF 09

IFP-300

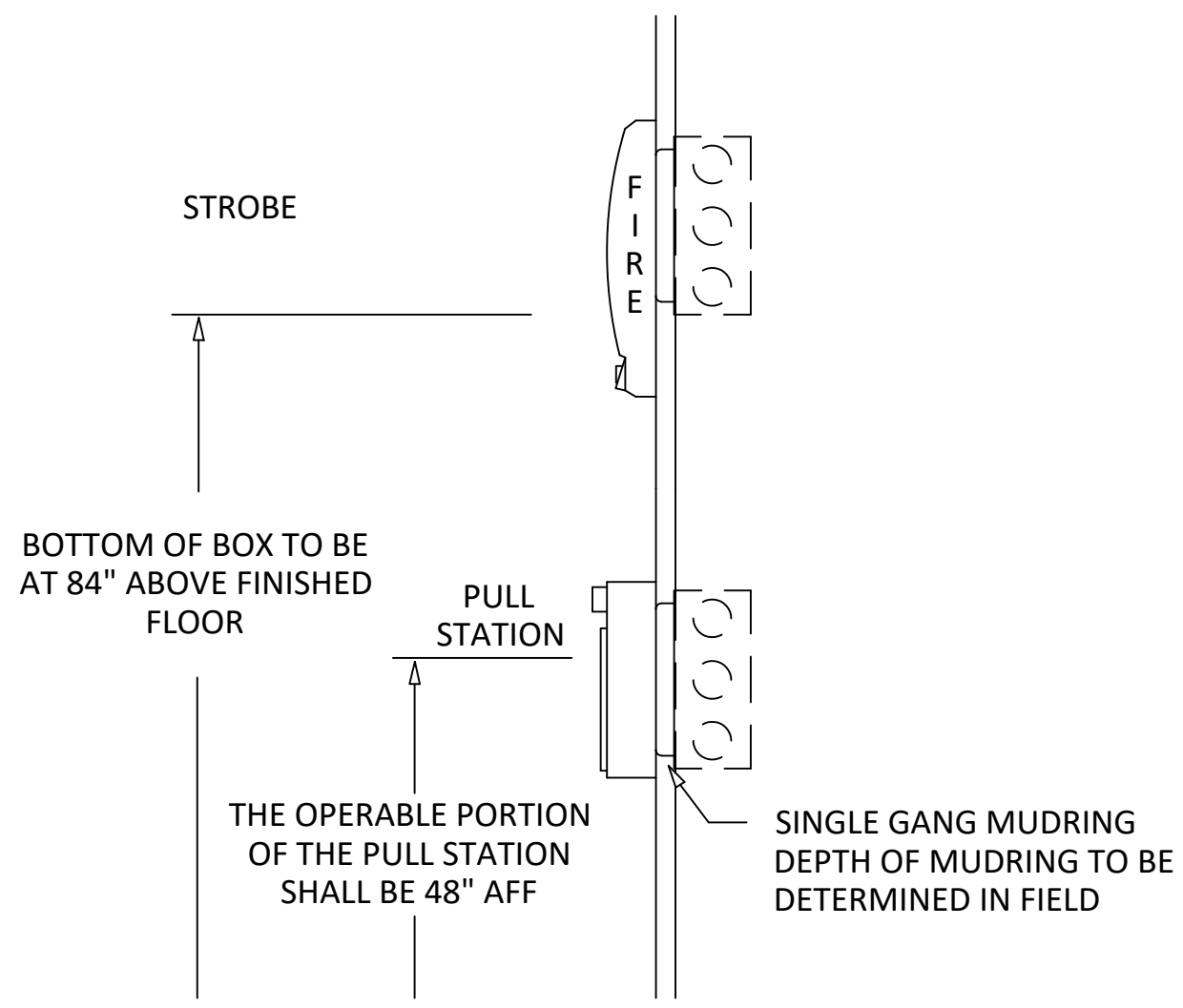


City of Puyallup
Development & Permitting Services
ISSUED PERMIT

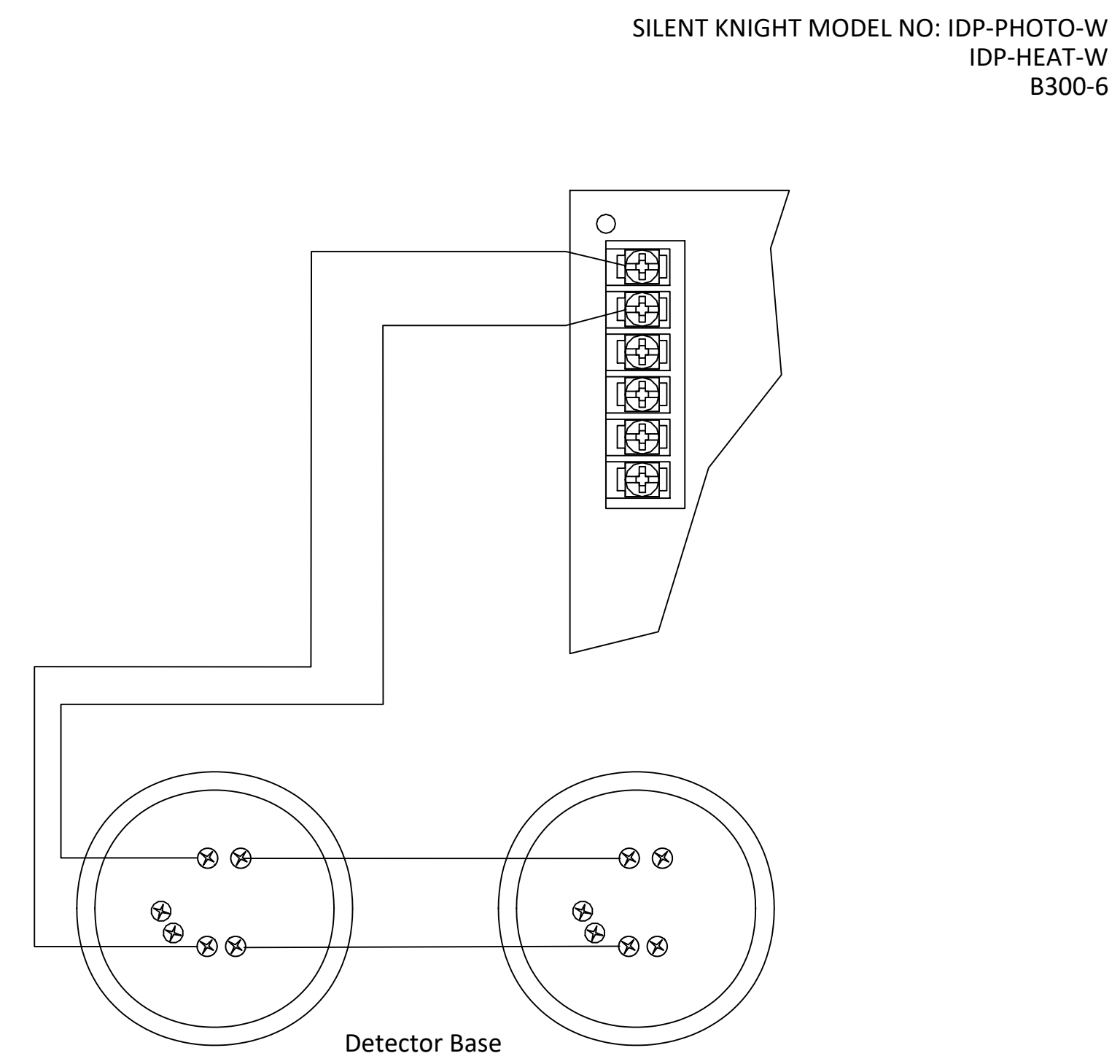
Building	Planning
Engineering	Public Works
Fire	Traffic

SUBMITTAL

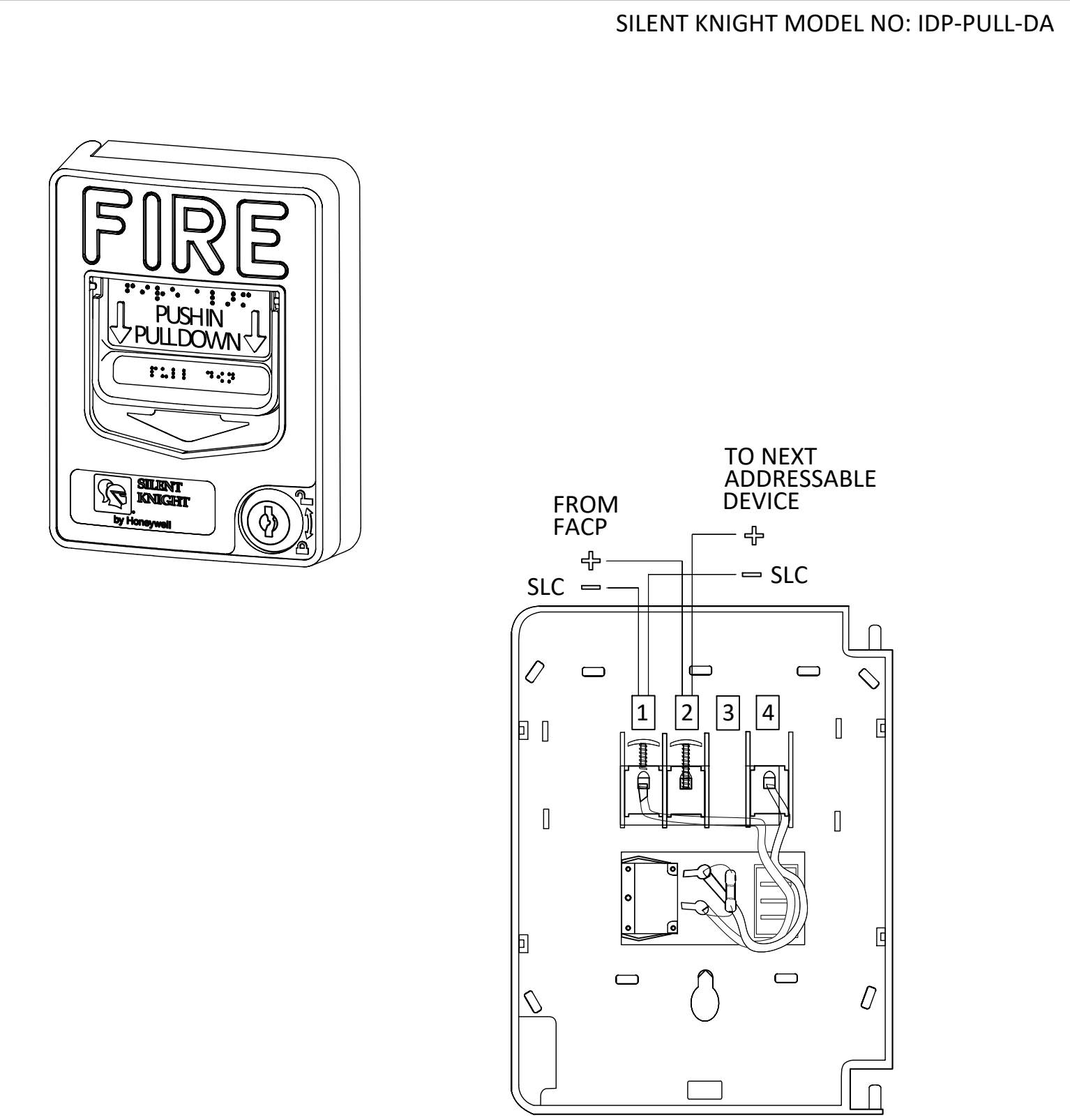
IFP-300 PANEL DETAILS



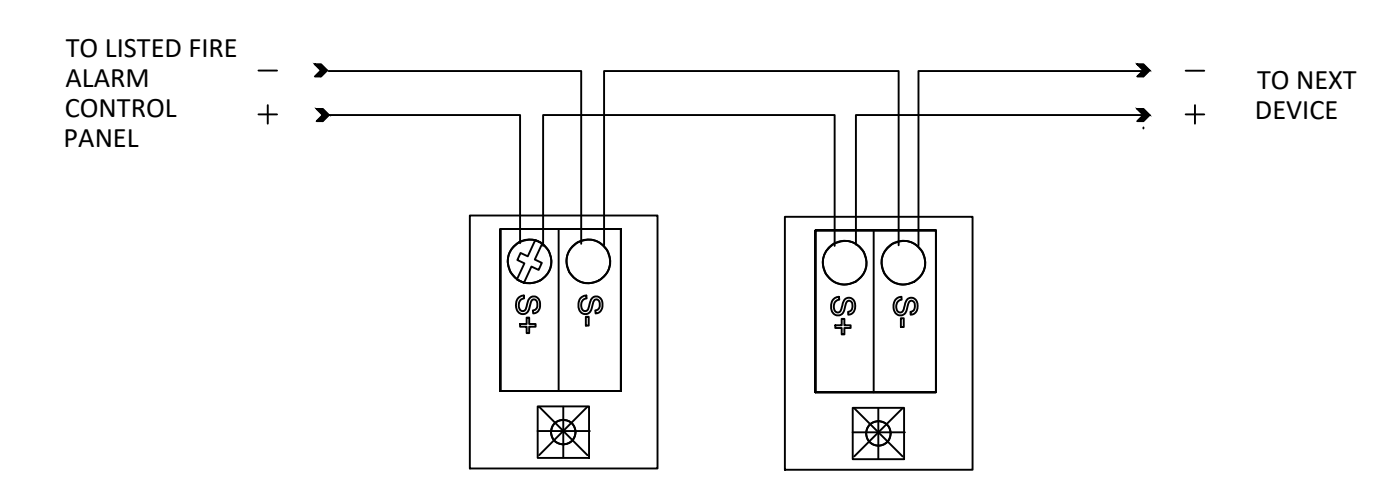
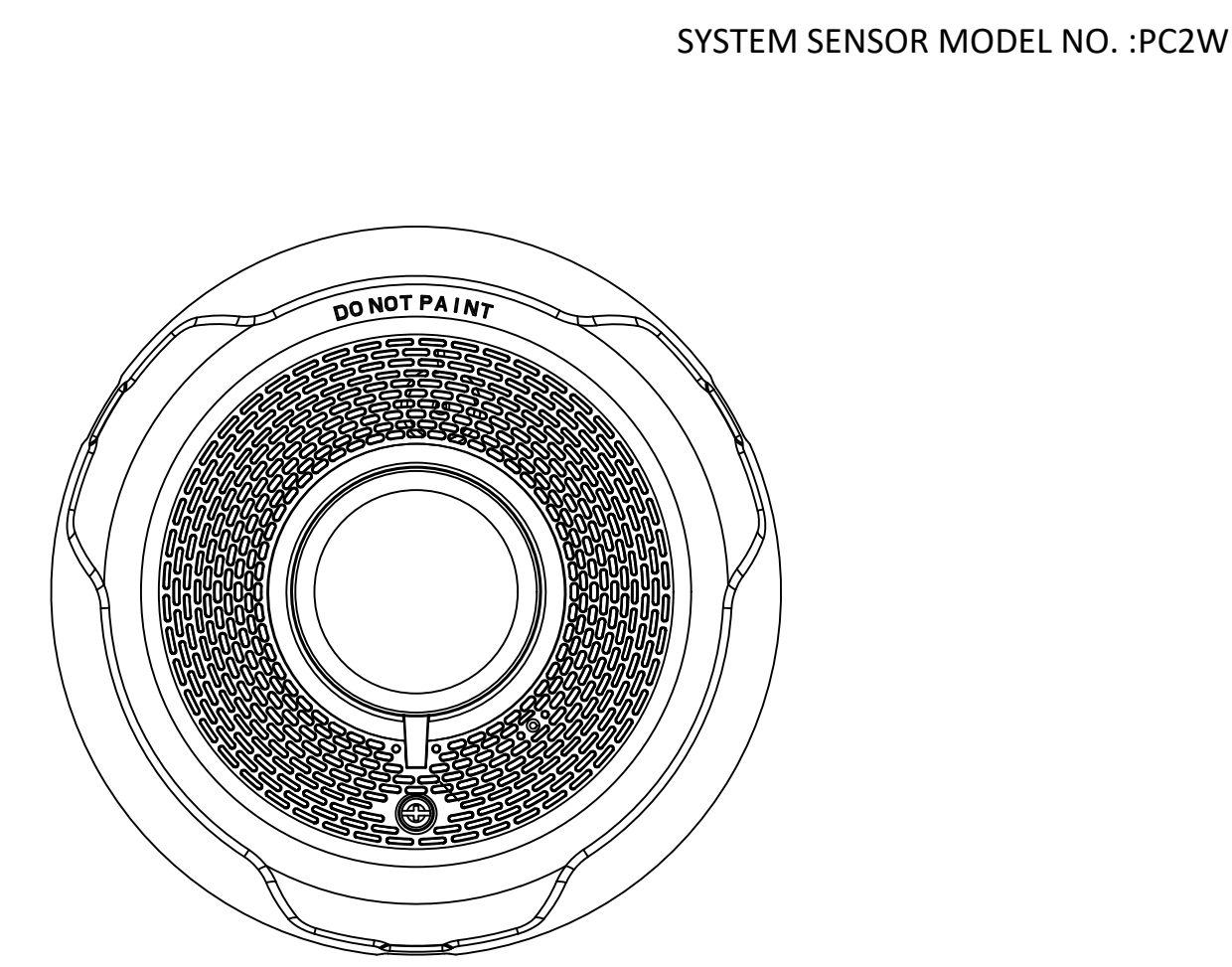
1 DEVICE MOUNTING HEIGHTS DETAIL
FA-501 SCALE: NTS



2 SMOKE AND HEAT DETECTOR DETAIL
FA-501 SCALE: NTS



3 PULL STATION, DUAL ACTION
FA-501 SCALE: NTS



4 CEILING HORN / STROBE DETAIL
FA-501 SCALE: NTS

CONNECTION DETAILS

City of Puyallup
Development & Permitting Services
ISSUED PERMIT

Building	Planning
Engineering	Public Works
Fire	Traffic

SUBMITTAL

Evergreen
FIRE AND SECURITY

EVERGREEN FIRE AND SECURITY
2111 SOUTH 90TH STREET
TACOMA, WA. 98444
253-627-3794

NICET CERTIFICATION INFO

NICET #	114223
LEVEL	IV
SUB-FIELD	FIRE ALARMS
EXPIRATION DATE	08/01/26
NAME	BRIAN LINDBO

GENERAL NOTES

REVISIONS/NOTES

REVISION	DATE	CAD/DESIGN

JOB DETAILS

DESIGNED BY:	B.LINDBO
DRAWN BY:	A.MURPHREE
CHECKED BY:	D.MOLMEN
CREATION DATE:	01/24/2022
DRAWING SCALE:	VARIES

JOB NAME

STEP BY STEP GATEWAY

CONNECTION DETAILS

PAGE NUMBER

FA-501

06 OF 09

- M1 - WET SYSTEM WF
- M2 - WET SYSTEM TAMPER
- M3 - LOW/HI AIR
- M4 - PIV
- M5 - DRY SYSTEM WF
- M6 - DRY SYSTEM TAMPER
- M7 - BACKFLOW 1
- M8 - BACKFLOW 2



EVERGREEN FIRE AND SECURITY
2111 SOUTH 90TH STREET
TACOMA, WA. 98444
253-627-3794

NICET CERTIFICATION INFO	
NICET #	114223
LEVEL	IV
SUB-FIELD	FIRE ALARMS
EXPIRATION DATE	08/01/26
NAME	BRIAN LINDBO

GENERAL NOTES

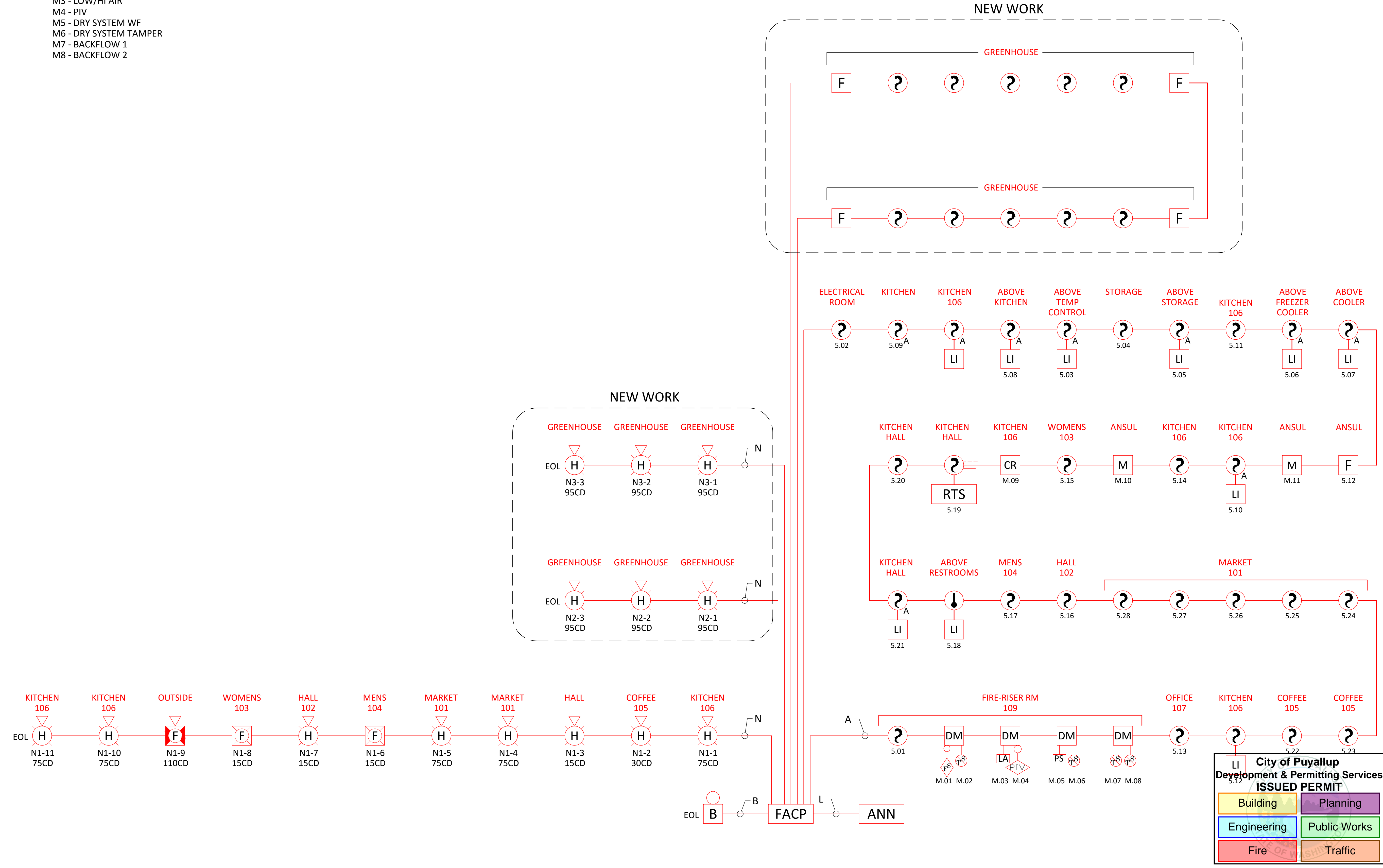
REVISIONS/NOTES	
REVISION	
DATE	CAD/DESIGN

JOB DETAILS	
DESIGNED BY:	B.LINDBO
DRAWN BY:	A.MURPHREE
CHECKED BY:	D.MOLMEN
CREATION DATE:	01/24/2022
DRAWING SCALE:	VARIES

JOB NAME

STEP BY STEP GATEWAY

RISER DIAGRAM



GATEWAY BUILDING GREENHOUSE RISER DIAGRAM - ADDITION

SUBMITTAL



NICET CERTIFICATION INFO	
NICET #	114223
LEVEL	IV
SUB-FIELD	FIRE ALARMS
EXPIRATION DATE	08/01/26
NAME	BRIAN LINDBO

GENERAL NOTES

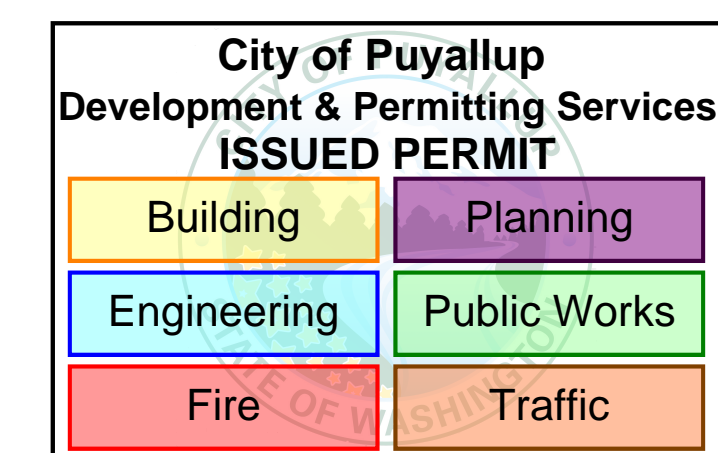
REVISIONS/NOTES	
REVISION	
DATE	CAD/DESIGN

JOB DETAILS	
DESIGNED BY:	B.LINDBO
DRAWN BY:	A.MURPHREE
CHECKED BY:	D.MOLMEN
CREATION DATE:	01/24/2022
DRAWING SCALE:	VARIES

JOB NAME
STEP BY STEP GATEWAY
MATRIX

PAGE NUMBER
FA-601
08 OF 09

FIRE ALARM SYSTEM OPERATION MATRIX	ANNUNCIATION AT FACP PANEL			TRANSMIT SIGNAL TO CENTRAL STATION				EVAC SIGNALS			AUX FUNCTIONS
	AUDIO-VISUAL COMMON TROUBLE INDICATION	AUDIO-VISUAL SUPERVISORY INDICATION	AUDIO-VISUAL GENERAL ALARM	COMMON TROUBLE SIGNAL TO CENTRAL STATION	SUPERVISORY SIGNAL TO CENTRAL STATION	GENERAL FIRE ALARM TO CENTRAL STATION	SPRINKLER WATER FLOW ALARM TO CENTRAL STATION	FACILITY FIRE EVACUATION AUDIO-VISUAL SIGNAL	EXTERIOR WATER FLOW BELL	ILLUMINATE REMOTE LED	SHUT DOWN HVAC FANS
FIRE ALARMS											
MANUAL FIRE ALARM PULL STATION			X			X		X			
WATER FLOW			X				X	X	X		
ABOVE CEILING SMOKE DETECTORS			X			X		X		X	
SMOKE DETECTORS			X			X		X			
PRESSURE SWITCH			X				X	X	X		
SUPERVISORY SIGNALS											
DUCT SMOKE DETECTOR		X			X						X
SPRINKLER SUPERVISORY VALVE		X			X						
PIV		X			X						
LOW AIR		X			X						
TROUBLE CONDITIONS											
FACP LOW BATTERY VOLTAGE	X			X							
FACP CIRCUIT FAULT	X			X							
FACP COMPONENT FAILURE	X			X							
FACP AC POWER FAILURE	X			X							
ANSUL			X			X		X			



SUBMITTAL

MATRIX

