

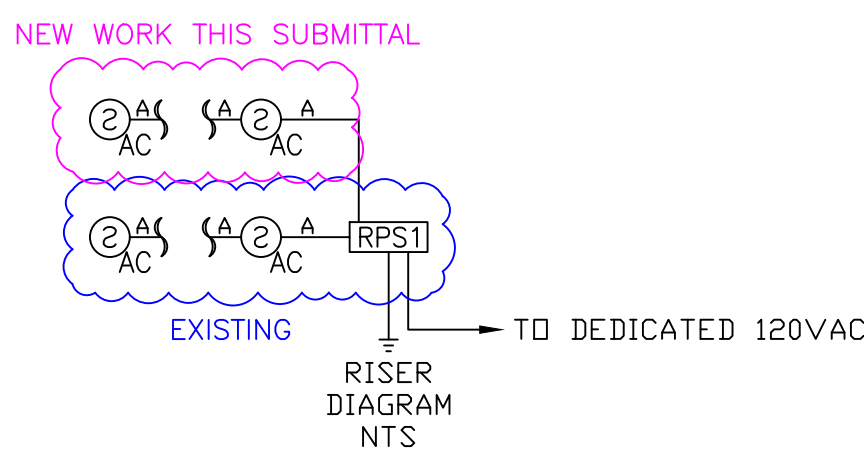
NEW	EXIST	SYMBOL	DESCRIPTION	MANUFACTURER	PART #	MOUNTING
0	1	[FACP]	ADDRESSABLE FIRE ALARM CONTROL PANEL - EXISTING	FARENHYT	IFP-2100ECS	SELF CONTAINED
0	1	[ANN]	LCD REMOTE ANNUNCIATOR - EXISTING	FARENHYT	RA-100	
0	2	[AMPx]	125 WATT DUAL CHANNEL AMPLIFIER - EXISTING	FARENHYT	ECS-125W	
0	4	[BPSx]	INTELLIGENT BOOSTER POWER SUPPLY - EXISTING	SILENT KNIGHT	5895XL	SELF CONTAINED
0	1	[RPSx]	INTELLIGENT BOOSTER POWER SUPPLY - EXISTING	FARENHYT	RPS-1000	SELF CONTAINED
0	7	[BPSx]	INTELLIGENT BOOSTER POWER SUPPLY - EXISTING	SILENT KNIGHT	5496	SELF CONTAINED
0	1	[BPSx]	BOOSTER POWER SUPPLY - EXISTING	SILENT KNIGHT	5495	SELF CONTAINED
0	1	[BPSx]	BOOSTER POWER SUPPLY - EXISTING	HONEYWELL	SK-PS6	SELF CONTAINED
0	1	[BPS1]	BOOSTER POWER SUPPLY	POTTER	PSN-106	SELF CONTAINED
0	0	Ⓢ	ADDRESSABLE SMOKE DETECTOR	FARENHYT	IDP-PHOTO W/B300-8 BASE	4" SQ DEEP W/SINGLE GANG MUD RING
32	88	Ⓢ	ADDRESSABLE SMOKE DETECTOR AC - INDICATES ABOVE CEILING DEVICE	FARENHYT	IDP-PHOTO W/B300-6 BASE	4" SQ DEEP W/SINGLE GANG MUD RING
0	17	XX	STROBE - WALL MOUNT XX - INDICATES DEVICE DAMAGED SETTING	SYSTEM SENSOR	SWL	4" SQ DEEP
0	4	XX	HORN/STROBE - WALL MOUNT XX - INDICATES DEVICE DAMAGED SETTING	SYSTEM SENSOR	P2WL	4" SQ DEEP
1	1	XX	STROBE - CEILING MOUNT XX - INDICATES DEVICE DAMAGED SETTING	SYSTEM SENSOR	SCWL	4" SQ DEEP
0	1	Ⓢ	SPEAKER/STROBE - WALL MOUNT W - INDICATES WIRING TRIP SETTING / od - INDICATES DEVICE DAMAGED SETTING	SYSTEM SENSOR	SPSWL	4" SQ DEEP
0	1	Ⓢ	SPEAKER/STROBE - CEILING MOUNT W - INDICATES WIRING TRIP SETTING / od - INDICATES DEVICE DAMAGED SETTING	SYSTEM SENSOR	SPSCWL	4" SQ DEEP
		EX	DENOTES EXISTING DEVICE			
		EOL	END OF LINE DEVICE			

GSMOB					
RPS-1000 Intelligent Power Supply					
Current Load:	Quantity	Amps	Total	Amps	Total
Device Type					
Main System Board	1	0.040	0.040	0.160	0.160
Addressable Devices	120	0.000055	0.006600	0.000055	0.006600
Total Panel Loads:			0.047 Amps		0.167 Amps
Standby Current Load:	0.047 Amps		For 24 Hours =	1.118	Amp-hours
Alarm Current Load:	0.167 Amps		For 5 Minutes =	0.014	Amp-hours
				25% Derating=	1.415
					Amp-hours
Total System Current Load:					1.415
					Amp-hours
Battery Pair to be Used:	12VDC		Amp-hours	8AH	

SEQUENCE OF OPERATIONS	MANUAL PULL STATION	SMOKE DETECTION	ELEVATOR MACHINE RM/SHAFT SMOKE DET.	MAIN FLOOR ELEV. LOBBY SMOKE DET.	OTHER FLOOR ELEV. LOBBY SMOKE DET.	HEAT DETECTION	DUCT SMOKE DETECTION	WET FLOW SWITCH	DRY FLOW SWITCH	HI-LOW AIR	DRY TAMPER SWITCH	WET TAMPER SWITCH	POST INDICATOR VALVE	SYSTEM TROUBLE
ACTIVATION OF LOCAL ALARM AT FACP	X	X	X	X	X	X	X	X	X	X	X	X	X	X
INDICATION OF ALARM AT LCD ANNUNCIATOR	X	X	X	X	X	X	X	X	X	X	X	X	X	X
ACTIVATE ALL AUDIBLE & VISIBLE DEVICES	X	X	X	X	X	X	X	X	X	X	X	X	X	X
SHUT DOWN RESPECTIVE HVAC UNIT						X								
INITIATE ELEV. RECALL TO MAIN FLOOR						X								
INITIATE ELEV. RECALL TO ALTERNATE FLOOR				X	X	X								
TRANSMIT ALARM SIGNAL TO CENTRAL STATION	X	X	X	X	X	X	X	X	X	X	X	X	X	X
TROUBLE/SUPV. INDICATION AT FACP						X					X	X	X	X
TROUBLE/SUPV. INDICATION AT LCD ANNUNCIATOR						X					X	X	X	X
TRANSMIT TROUBLE/SUPV. SIGNAL TO CENTRAL STATION						X					X	X	X	X

SCOPE OF WORK:
ADD 32EA ABOVE CEILING SMOKE DETECTORS, 1EA STROBE TO THE EXISTING SYSTEM FOR THIS TENANT IMPROVEMENT AREA

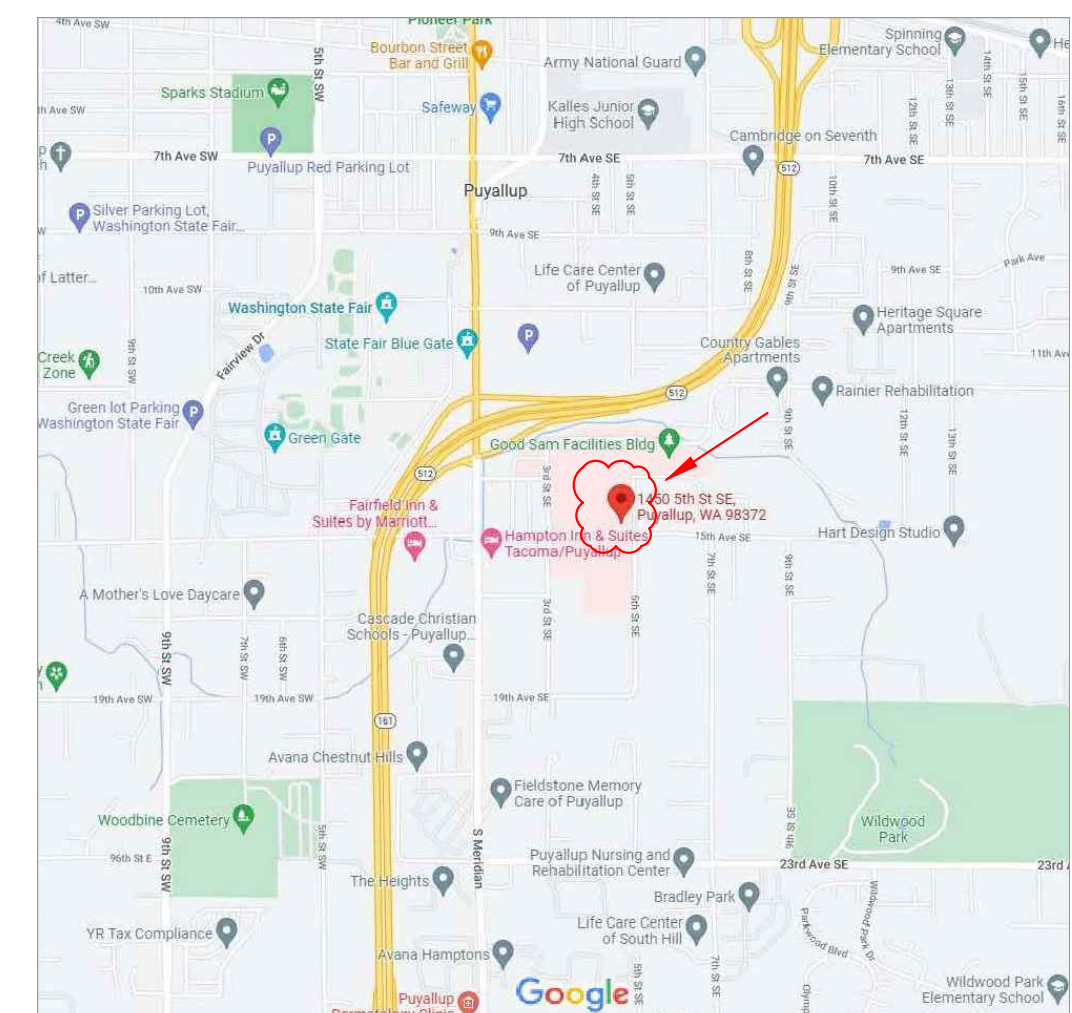
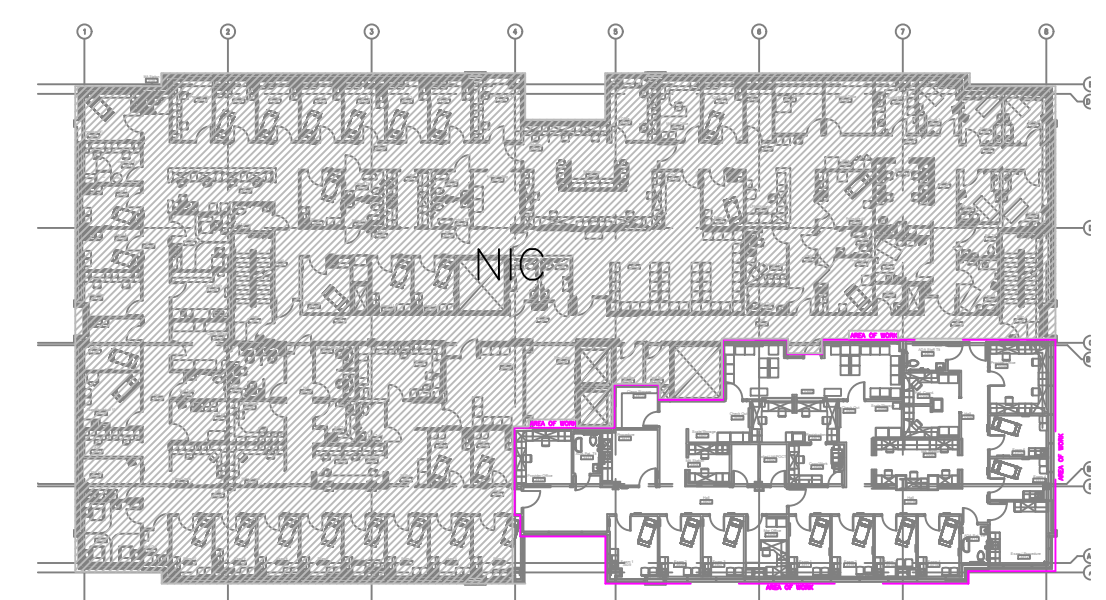
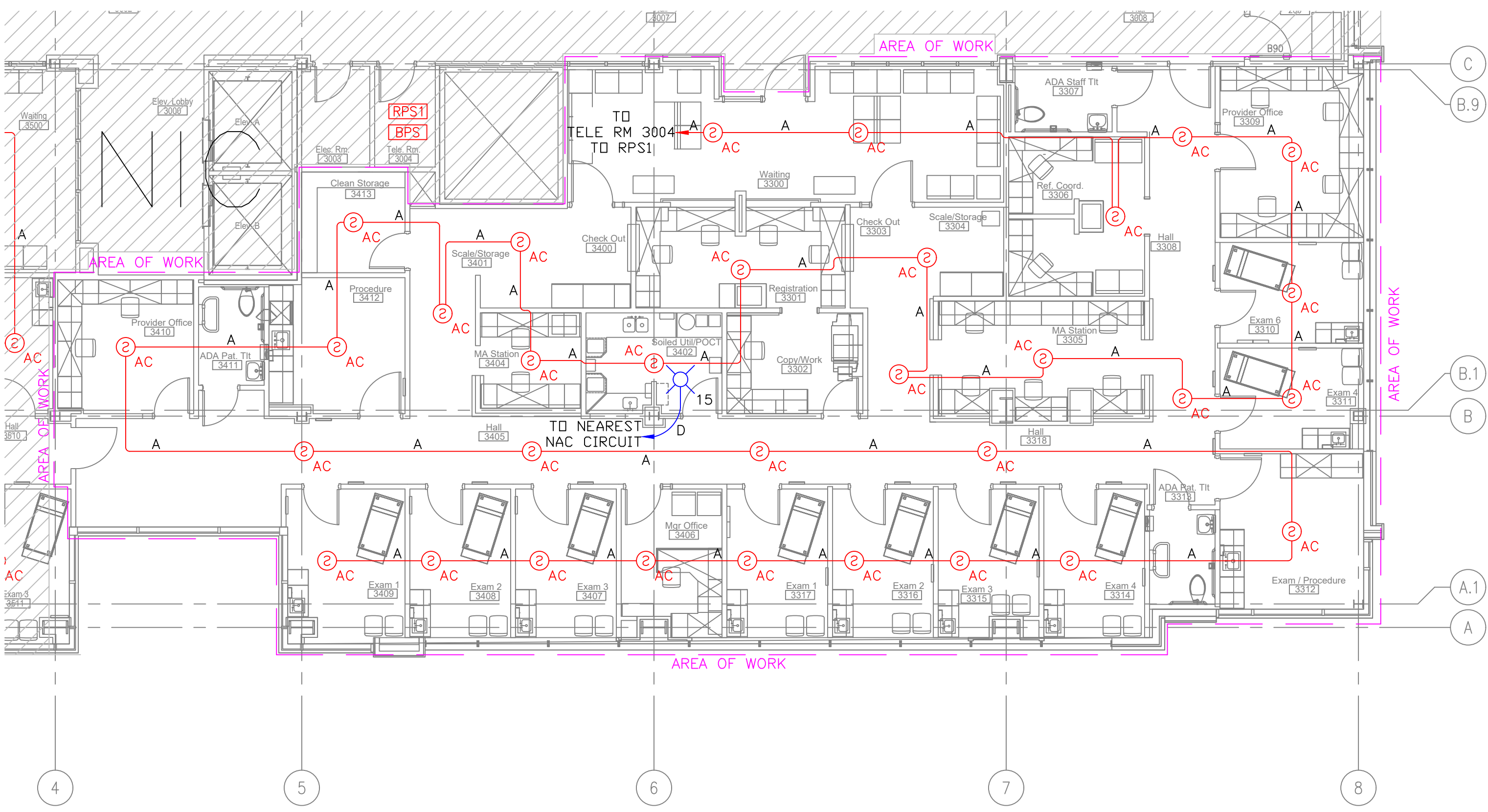
WIRE LEGEND	
A	= 18-2 FPLP ADDRESSABLE INITIATING CKT
B	= 18-2 X 2 FPLP ADDRESSABLE INITIATING CKT LOOP
C	= 14-2 FPLP INDICATING CKT
D	= 14-2 X 2 FPLP INDICATING CKT LOOP
E	= 18-2 FPLP CONVENTIONAL INITIATING CKT
F	= 18-2 X 2 FPLP CONVENTIONAL INITIATING CKT LOOP
G	= 14-2 FPLP 24VDC POWER CKT
H	= 18-4 FPLP P-LINK CKT
I	=
J	= 18-4 FPLP ANNUNCIATOR CKT
K	= 18-2 FPLP CONTROL CKT
L	= 18-4 FPLP REMOTE TEST STATION CKT



City of Puyallup
Fire
REVIEWED FOR COMPLIANCE
DDrake
04/08/2024
10:36:29 AM

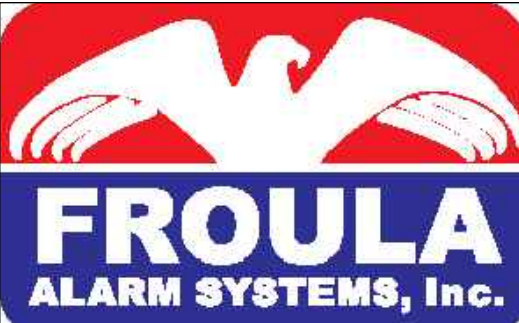
THE APPROVED CONSTRUCTION PLANS AND ALL ENGINEERING MUST BE POSTED ON THE JOB AT ALL INSPECTIONS IN A VISIBLE AND READILY ACCESSIBLE LOCATION.

Approval of submitted plans is not an approval of omissions or oversight by this office or noncompliance with any applicable regulations of local government. The contractor is responsible for making sure that the building complies with all applicable building codes and regulations of the local government.

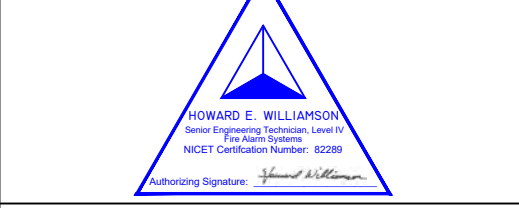


City of Puyallup
Development & Permitting Services
ISSUED PERMIT

Building	Planning
Engineering	Public Works
Fire	Traffic



Froula Alarm Systems, Inc.
861 Industry Drive
Tukwila, WA 98188
206-575-1962



FIRE ALARM SYSTEM
GSMOB - 3RD FLOOR
WOMEN'S CLINIC TENANT IMPROVEMENT
1450 - 5TH STREET SE
PUYALLUP, WASHINGTON 98372

REV	DATE	DESCRIPTION
	3/14/24	PERMIT DRAWINGS

PROJ. MGR.: BILL HUGGINS
DRAFTER: HEW

FA-1
SHEET NO.
1 OF 1