

**D2 ENLARGED FLOOR PLAN - BATTERY ROOM 134 & UPS ROOM 135**  
SCALE: 1/8" = 1'-0"

**BATTERY SUMMARY FOR BATTERY ROOM 134**

PROPOSED BATTERY TYPE: NICKEL - ZINC

BATTERY CAPACITY: 38 KWH PER BATTERY CABINET

BATTERY STRING 2-UPS-A: 6 BATTERY CABINETS, 228 KWH  
 BATTERY STRING 2-UPS-B: 6 BATTERY CABINETS, 228 KWH  
 BATTERY STRING 2-UPS-A: 6 BATTERY CABINETS, 228 KWH  
 BATTERY STRING 2-UPS-B: 6 BATTERY CABINETS, 228 KWH  
 BATTERY STRING 3-UPS-A: 6 BATTERY CABINETS, 228 KWH  
 BATTERY STRING 3-UPS-B: 6 BATTERY CABINETS, 228 KWH  
 BATTERY STRING 4-UPS-A: 6 BATTERY CABINETS, 228 KWH  
 BATTERY STRING 4-UPS-B: 6 BATTERY CABINETS, 228 KWH  
 BATTERY STRING 5-UPS-A: 6 BATTERY CABINETS, 228 KWH  
 BATTERY STRING 5-UPS-B: 6 BATTERY CABINETS, 228 KWH  
 BATTERY STRING 6-UPS-A: 6 BATTERY CABINETS, 228 KWH  
 BATTERY STRING 6-UPS-B: 6 BATTERY CABINETS, 228 KWH  
 BATTERY STRING 7-UPS-A: 6 BATTERY CABINETS, 228 KWH  
 BATTERY STRING 7-UPS-B: 6 BATTERY CABINETS, 228 KWH

FUTURE BATTERY STRING: 8-UPS-A: 6 BATTERY CABINETS, 228 KWH  
 FUTURE BATTERY STRING: 8-UPS-B: 6 BATTERY CABINETS, 228 KWH

**TOTAL BATTERY CAPACITY IN ROOM: 3,648 KWH**

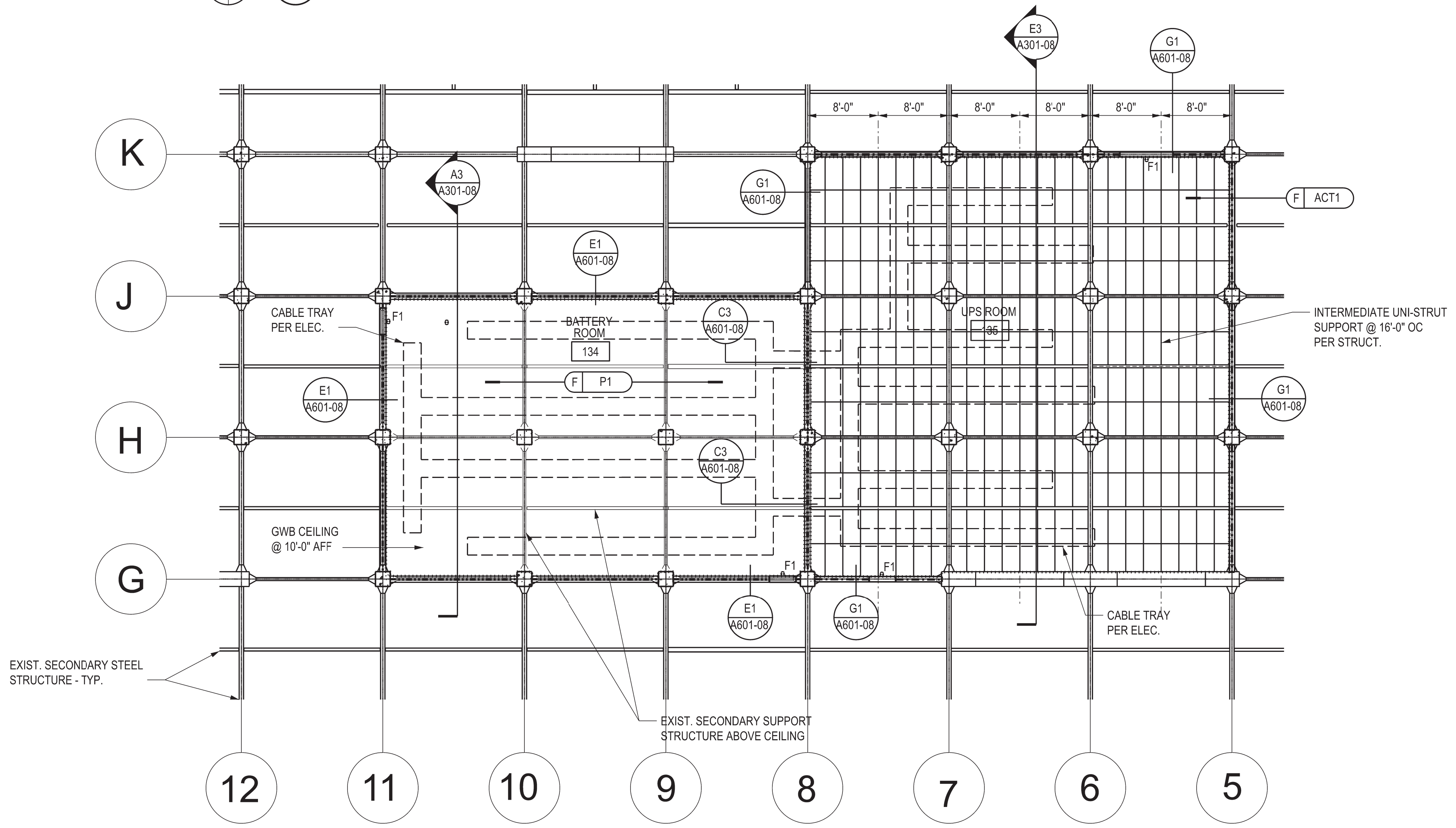
**WASHINGTON FIRE CODE COMPLIANCE**  
 MAXIMUM BATTERY CAPACITY PER CONTROL AREA: UNLIMITED FOR NICKEL ZINC BATTERIES PER WAC 51-54A-1207

SEPARATION BETWEEN BATTERIES: 0'-0" PER APPROVED HAZARD MITIGATION ANALYSIS

MAXIMUM CAPACITY PER BATTERY STRING: 228 KWH PER APPROVED HAZARD MITIGATION ANALYSIS

**REQUIRED BATTERY ROOM SEPARATION: 2 HOURS**

REQUIRED UPS ROOM SEPARATION: 0 HOURS

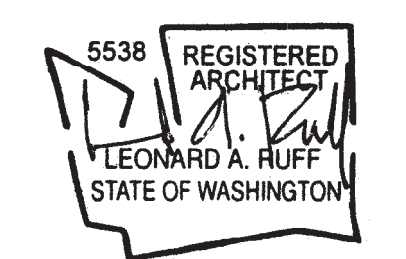


**A2 ENLARGED REFLECTED CEILING PLAN - BATTERY ROOM 134 & UPS ROOM 135**  
SCALE: 1/8" = 1'-0"

**OWNER:**  
 BENAROYA CAPITAL, LLC  
 Centeris Data Centers  
 9675 SE 36th St, Suite 115  
 Mercer Island, WA 98040  
 +1.253.200.4120

**PRCTI20240333**

**CONSULTANT:**  
 City of Puyallup  
 Development & Permitting Services  
 ISSUED PERMIT  
 Building Planning  
 Engineering Public Works  
 Fire Traffic



**CASCADE MISSION CRITICAL, LLC**  
 Data Center Consulting and Design  
 6210 36th Avenue N.E., Seattle, WA 98115  
 P: 206-294-1288 www.cascademissioncritical.com

**CENTERIS VOLTAGE PARK**  
 1023 39th Avenue South East  
 Puyallup, WA 98374-2121  
 WB02 VOLTAGE PARK  
 UPS & BATTERY ROOMS

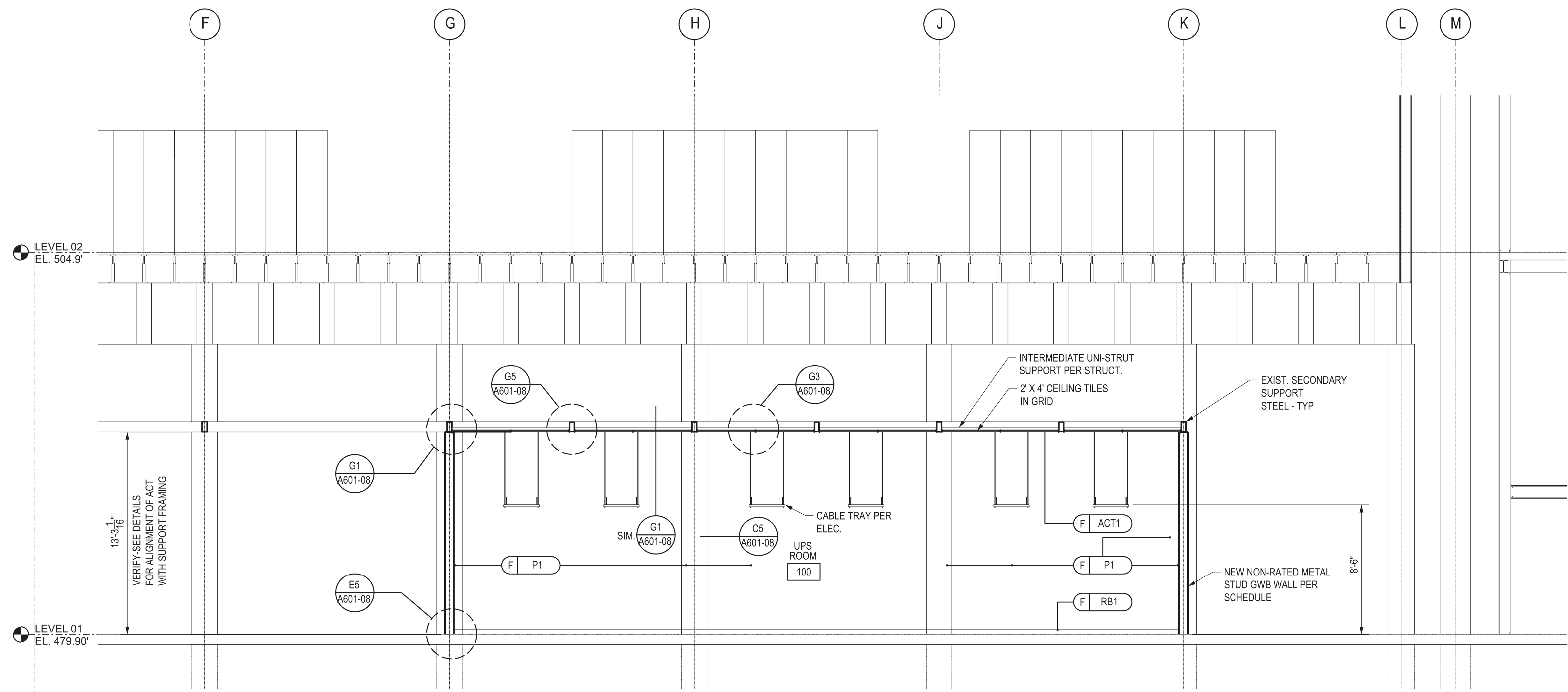
ISSUED/REVISED DATE  
 PERMIT SUBMITTAL 3/1/24

PERMIT SUBMITTAL  
 MARCH 1, 2024

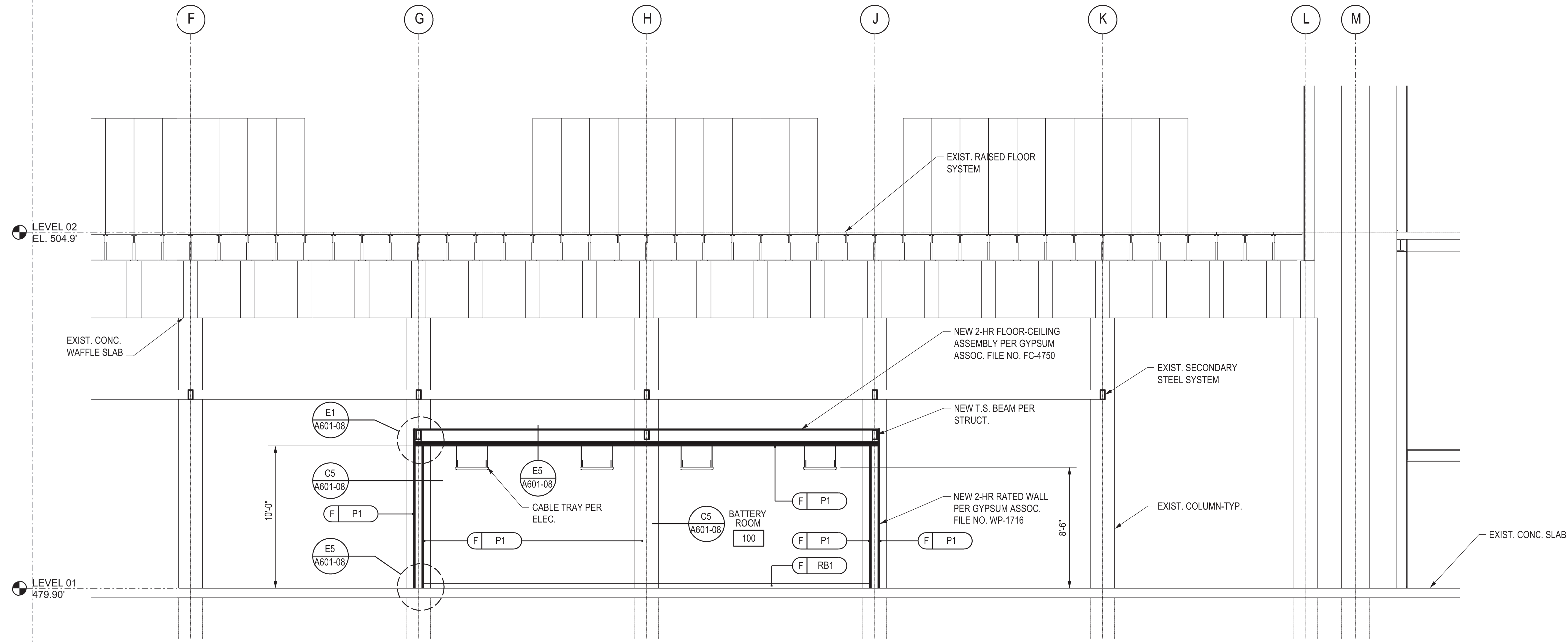
LEVEL 1  
 ENLARGED FLOOR PLAN  
 BATTERY ROOM 134  
 UPS ROOM 135

**A-103-08**





**E3 UPS ROOM SECTION**  
SCALE: 1/4" = 1'-0"



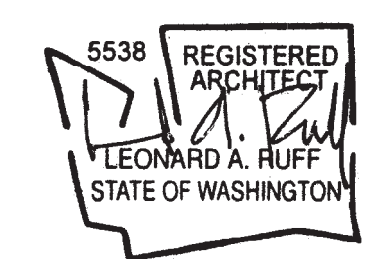
**A3 BATTERY ROOM SECTION**  
SCALE: 1/4" = 1'-0"

OWNER:  
BENAROYA CAPITAL, LLC  
Centeris Data Centers  
9675 SE 36th St, Suite 115  
Mercer Island, WA 98040  
+1.253.200.4120

PRCTI20240333

CONSULTANT:

City of Puyallup Development & Permitting Services ISSUED PERMIT	
Building	Planning
Engineering	Public Works
Fire	Traffic



CASCADE MISSION CRITICAL, LLC  
Data Center Consulting and Design  
6210 36th Avenue N.E. Seattle, WA 98115  
P: 206-294-1288 www.cascadecommissioncritical.com

CENTERIS VOLTAGE PARK  
1023 39th Avenue South East  
Puyallup, WA 98374-2121  
WB02 VOLTAGE PARK  
UPS & BATTERY ROOMS

ISSUED/REVISED	DATE
PERMIT SUBMITTAL	3/1/24

PERMIT SUBMITTAL  
MARCH 1, 2024

SECTIONS

A-301-08