

SYMBOL LEGEND

QTY	SYMBOL	DESCRIPTION	MANUFACTURER	MODEL #	MOUNT DEVICE	MOUNT ACC.
1		FIRE ALARM CONTROL PANEL	POTTER	AFC-50	SURFACE RECESSED	N/A
1		BOOSTER POWER SUPPLY	POTTER	PSN-64	SURFACE RECESSED	N/A
2		ADDRESSABLE PHOTO DETECTOR	POTTER	PAD300-PD	3-0 NL ON 4 SQ DP	N/A-3.0 RING
12		ADDRESSABLE HEAT DETECTOR	POTTER	PAD300-HD	3-0 NL ON 4 SQ DP	N/A-3.0 RING
11		PULL STATION	POTTER	PAD100-PSSA	SG NL ON-4 SQ DP	N/A-SG RING
2		DUAL INPUT MONITOR MODULE	POTTER	PAD100-DIM	2G NL ON-4 SQ DP	N/A-2G RING
1		WALL MOUNT STROBE	SYSTEM SENSOR	SWL	SG NL ON-4 SQ DP	N/A-SG RING
1		CEILING MOUNT STROBE	SYSTEM SENSOR	PC2WL	SG NL ON-4 SQ DP	N/A-SG RING
8		CEILING MOUNT HORN STROBE	SYSTEM SENSOR	PC2WL	SG NL ON-4 SQ DP	N/A-SG RING
14		LOW FREQUENCY SOUNDER	SYSTEM SENSOR	HW-LF	SG NL ON-4 SQ DP	N/A-SG RING
6		MINI HORN	SYSTEM SENSOR	MHW	SG NL ON-4 SQ DP	N/A-SG RING
1		EXTERIOR BELL AND STROBE	SYSTEM SENSOR	SSM24-10	DG WP	MANUFACTURER SUPPLIED BOX
-		WATERFLOW SWITCH	N/A	N/A	BY OTHERS	BY OTHERS
-		VALVE TAMPER SWITCH	N/A	N/A	BY OTHERS	BY OTHERS
-		HI/LOW SWITCH	N/A	N/A	BY OTHERS	BY OTHERS
-		PRESSURE SWITCH	N/A	N/A	BY OTHERS	BY OTHERS

WIRE LEGEND

CONDUIT/RACEWAY/SINGLE CONDUCTOR						OPEN CABLE			
LETTER	FUNCTION	CONDUCTOR COLOR	AWG	QTY	TYPE	CONDUCTOR COLOR	AWG	QTY	TYPE
A	ADDRESSABLE INITIATING CIRCUIT	(-) BLACK (+) RED	#16	1	THWN-SOLID	RED	#16/2	1	16/2- FPLP TYPE MC SMK CNTRL
B	NOTIFICATION APPLIANCE CIRCUIT	(-) GREEN (+) WHITE	#14	1	THWN-SOLID	RED	#14/2	1	14/2- FPLP
C	FIRE FIGHTER PHONE VOICE CIRCUIT	(-) BLACK (+) RED	#16	1	THWN-SOLID	RED	#16/2	1	CI-FPLP SHIELED PARIS
D	FIRE FIGHTER PHONE SLC CIRCUIT	(-) BLACK (+) RED	#16	1	THWN-SOLID	RED	#16/2	1	CI-FPLP SHIELED PARIS
E	ANNUNCIATOR CIRCUIT W/ 24VDC PWR	(-) BLACK (+) RED (-) GREEN (+) WHITE	#16	1	THWN-SOLID	RED	#14/4	1	CI-FPLP SHIELED PAIR
F	2- WAY COMMUNICATION SYSTEM POWER					BLUE	#18/2	1	CI-CMR
G	2- WAY COMMUNICATION VOICE CIRCUIT				CI-TSP (2- PAIR) CMR	BLUE	#22/2	1	CI-TSP (2- PAIR) CMR
A	2- WAY COMMUNICATION POWER SUPERVISION CIRCUIT				16/2 FPLP	RED	#16/2	1	16/2 FPLP
H	TELCO SERVICE CONNECTION					BLUE	24/4 PAIR	1	CAT5E
I	VOICE EVACUATION SPEAKER CIRCUIT	(-) BLACK (+) RED	#16	1	TSP-W/DRAIN FPLP	RED	#16/2	1	TSP-W/ DRAIN FPLP
J	24VDC AUX POWER CIRCUIT	(-) BLACK (+) RED	#14	1	THWN-SOLID	RED	#14/2	1	14/2- FPLP

COPPERBERRY CONDOS SOUTH

4002 10TH ST SE

PUYALLUP, WA 98374

SHEET INDEX

SHEET NUMBER	SHEET TYPE
FA000	COVER PAGE
FA001	BATTERY CALCS
FA002	RISER
FA003	AFC-50 CONNECTION DETAIL
FA004	DETAILS
FA005	PSN-64 CONNECTION DETAIL
FA100	MAIN FLOOR
FA101	UPPER FLOOR
FA102	ATTIC

SYSTEM OUTPUTS

	CONTROL UNIT ANNUNCIATION		NOTIFICATION									
	ACTIVATE COMMON ALARM SIGNAL INDICATOR	ACTIVATE AUDIBLE ALARM SIGNAL	ACTIVATE COMMON SUPERVISORY SIGNAL INDICATOR	ACTIVATE AUDIBLE SUPERVISORY SIGNAL	ACTIVATE COMMON TROUBLE SIGNAL INDICATOR	ACTIVATE AUDIBLE COMMON TROUBLE SIGNAL	TRANSMIT FIRE ALARM SIGNAL TO SUPERVISING STATION	TRANSMIT SUPERVISORY SIGNAL TO SUPERVISING STATION	TRANSMIT TROUBLE SIGNAL TO SUPERVISING STATION	DISPLAY CHANGES OF STATUS	ACTIVATE GENERAL EVACUATION SIGNAL	ACTIVATE BUILDING NOTIFICATION
HEAT DETECTORS	X	X					X			X	X	X
SMOKE DETECTORS	X	X					X			X	X	X
MANUAL STATIONS	X	X					X			X	X	X
SPRINKLER WATER FLOW	X	X					X			X	X	X
SPRINKLER TAMPER VALVES			X	X				X		X		
FIRE ALARM AC POWER FAILURE					X	X			X	X		
FIRE ALARM SYSTEM LOW BATTERY					X	X			X	X		
OPEN CIRCUIT					X	X			X	X		
GROUND FAULT					X	X			X	X		
NAC SHORT					X	X			X	X		

GENERAL NOTES

HVAC CONTRACTOR SHALL PROVIDE, INSTALL AND PROVIDE POWER TO ANY REQUIRED DUCT DETECTORS. HVAC CONTRACTOR SHALL ALSO MAKE ALL CONNECTIONS AND TERMINATIONS TO HVAC SYSTEMS TO FACILITATE FAN SHUT DOWN FROM DUCT DETECTORS AND HVAC CONTRACTOR SHALL ALSO MAKE AVAILABLE A COMMON TERMINATION POINT FOR CONNECTION TO THE FIRE ALARM SYSTEM TO FACILITATE FAN SHUT DOWN UPON RECEIPT OF A GENERAL FIRE ALARM IF SUCH A FUNCTION IS REQUIRED PER APPLICABLE BUILDING CODES.

ELEVATOR CONTRACTOR SHALL MAKE ALL NECESSARY CONTROL CONNECTIONS INSIDE ELEVATOR CONTROL EQUIPMENT AND PROVIDE A REPRESENTATIVE IN A TIMELY MANNER TO FACILITATE AN ELEVATOR SYSTEMS PRETEST PRIOR TO REQUESTING AN ELEVATOR SYSTEMS FINAL INSPECTION,

ELECTRICAL CONTRACTOR SHALL PROVIDE ALL REQUIRED 120V 20 AMP DEDICATED CIRCUITS AS NECESSARY TO POWER ALL FIRE ALARM CONTROL EQUIPMENT AND LABEL ELECTRICAL SERVICE PANEL CLEARLY IN RED TO INDICATE FIRE ALARM POWER CIRCUITS. ALL FIRE ALARM POWER CIRCUIT BREAKERS WILL HAVE LOCK OUT DEVICES INSTALLED BY ELECTRICAL CONTRACTOR.

ELECTRICAL CONTRACTOR SHALL PROVIDE AND TERMINATE ALL REQUIRED CONNECTIONS TO SMOKE DAMPERS IF PRESENT AND PROVIDE AND TERMINATE THE LINE VOLTAGE POWER CONNECTIONS TO A 24VDC COIL RELAY LOCATED AT THE FIRE ALARM CONTROL PANEL TO FACILITATE CONNECTION TO SAID RELAY FOR THE PURPOSE OF ACTIVATING SMOKE DAMPER UPON RECEIPT OF GENERAL FIRE ALARM

ELECTRICAL CONTRACTOR SHALL PROVIDE ALL CONDUIT NECESSARY TO FACILITATE ACCESS TO OTHERWISE UNREACHABLE PORTIONS OF THE STRUCTURE AND/ OR LOCATIONS DETACHED FROM THE STRUCTURE THAT REQUIRE CONNECTION TO FIRE ALARM SYSTEM INCLUDING BUT NOT LIMITED TO SPRINKLER SYSTEM POST INDICATOR, VALVES REMOTE WATER SUPPLY PITS THAT WILL CONTAIN TAMPER SWITCHES, ETC.

6)ELECTRICAL CONTRACTOR SHALL PROVIDE ALL BOXES AND HARDWARE NECESSARY TO FACILITATE ABOVE LISTED ELECTRICAL SCOPE OF SYSTEMS INTEGRATION.

GENERAL CONTRACTOR SHALL COORDINATE AND BE MADE RESPONSIBLE FOR THE COMPLETION OF ALL TRADES INVOLVED IN THE FIRE ALARM SYSTEM INSTALLATION PROCESS. GENERAL CONTRACTOR SHALL ADHERE TO THE REQUIREMENTS OF THE BELOW LISTED FIRE ALARM SYSTEMS COMPLETION CHECK LIST AND THIS SECTION AND WILL ENSURE ALL ASPECTS OF WORK HAVE BEEN COMPLETED PRIOR TO REQUESTING A FINAL FIRE ALARM SYSTEMS INSPECTION.

THESE DRAWINGS RELATE TO FIRE ALARM INSTALLATION ONLY AND IN NO WAY SHOULD BE CONSTRUED AS GENERAL CONSTRUCTION DOCUMENTS OR AN ADDENDUM TO ANY OTHER CONSTRUCTION DRAWINGS.

INSTALLATION NOTES

ALL CIRCUITS TO BE CLASS B SUPERVISION, FIRE ALARM SYSTEM TO REPORT BY DEVICE ADDRESSABLE POINT IN MULTIPLEX SYSTEM OR BY ZONE IN CONVENTIONAL SYSTEMS AS NOTED IN SUBMITTAL DOCUMENTS AND THIS PAGE

ALL WIRING TO BE FIRE POWER LIMITED AND PROPERLY RATED FOR INSTALLATION ENVIRONMENT

SMOKE DETECTORS SHALL NOT BE INSTALLED CLOSER THAN 36" TO ANY HVAC INLET/OUTLET

AREA SMOKE DETECTORS SHALL NOT BE INSTALLED MORE THAN 30' APART CENTER TO CENTER AND NO MORE THAN 15' FROM ANY WALL OR PROTECTED AREA

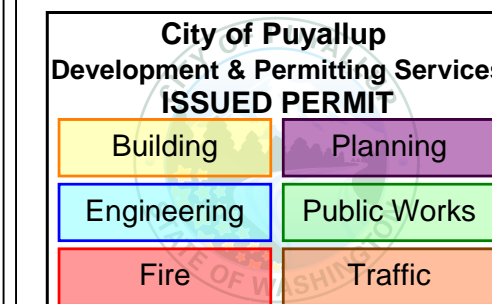
CORRIDOR SMOKE DETECTORS SHALL NOT BE INSTALLED MORE THAN 42' APART CENTER TO CENTER AND NO MORE THAN 15' FROM ANY WALL OR PROTECTED AREA

ALL WALL MOUNTED NOTIFICATION AND INITIATING DEVICES SHALL BE MOUNTED PER MOUNTING DETAIL ON THIS PAGE

FACP TO BE OPERATED AT A TEMPERATURE NO LOWER THAN 32 DEGREES

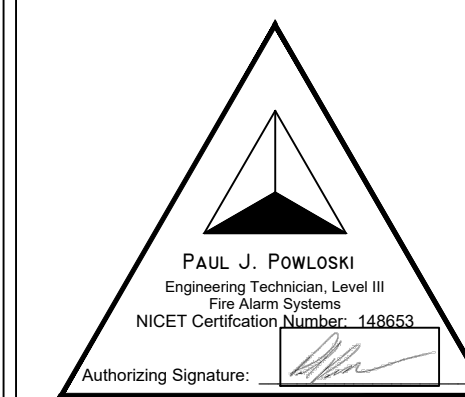


CITY APPROVAL STAMP



PROJECT NAME: COPPERBERRY CONDOS
 DRAWING TYPE: FIRE ALARM PLAN
 PROJECT LOCATION: 4002 10TH ST SE PUYALLUP, WA 98374

DESIGNER OF RECORD



PLAN SET NOTES

PROJECT NUMBER: LC241003

SHEET NAME: COVER PAGE

DRAWN: CW DATE: 02/22/2024

DRAWING NUMBER

FA000

City of Puyallup Fire REVIEWED FOR COMPLIANCE

DDrake
04/15/2024
10:37:25 AM



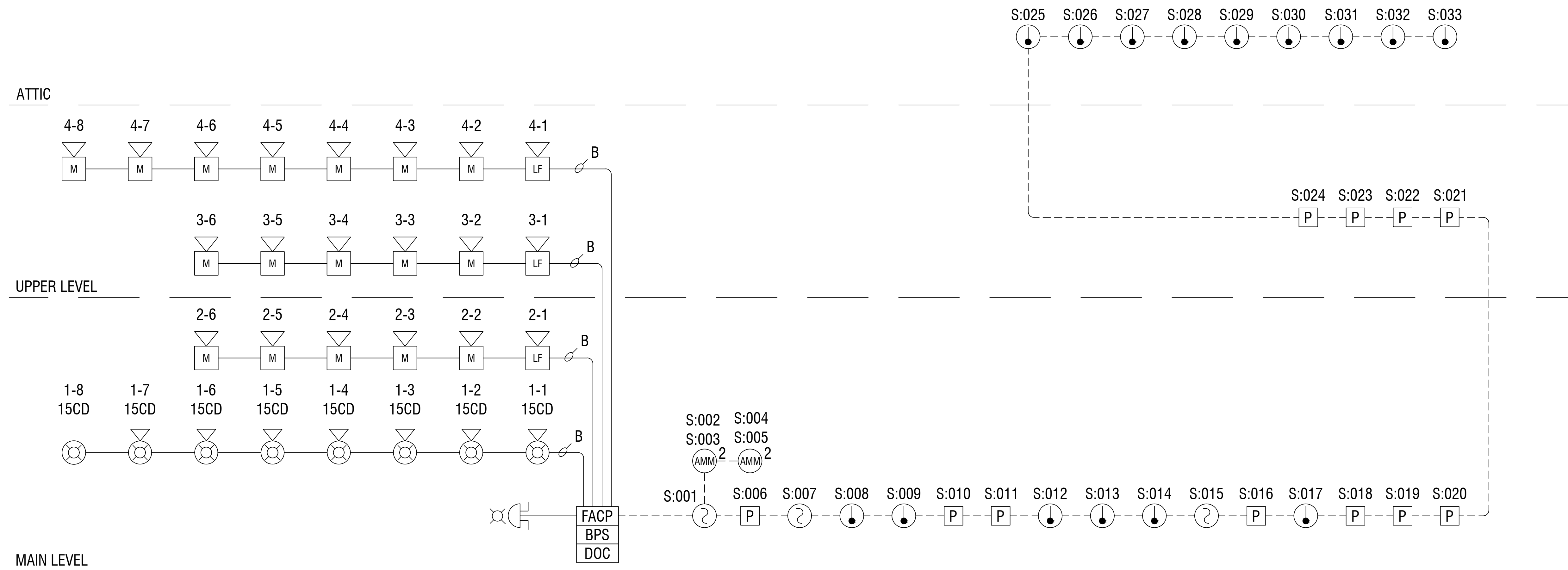
THE APPROVED CONSTRUCTION PLANS AND ALL ENGINEERING MUST BE POSTED ON THE JOB AT ALL INSPECTIONS IN A VISIBLE AND READILY ACCESSIBLE LOCATION.

Approval of submitted plans is not an approval of omissions or oversight by this office or noncompliance with any applicable regulations of local government. The contractor is responsible for making sure that the building complies with all applicable building codes and regulations of the local government.

CITY APPROVAL STAMP

City of Puyallup
 Development & Permitting Services
ISSUED PERMIT

Building	Planning
Engineering	Public Works
Fire	Traffic

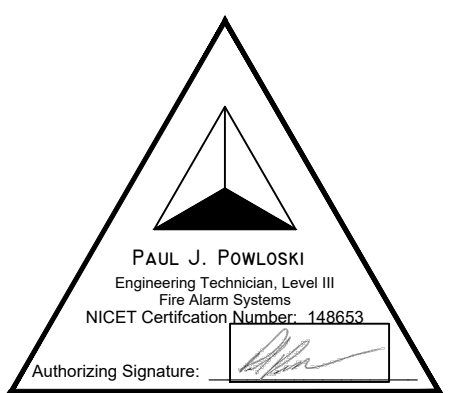


PROJECT NAME
 COPPERBERRY CONDOS

PROJECT TYPE
 FIRE ALARM PLAN

PROJECT LOCATION
 4002 10TH ST SE
 PUYALLUP, WA 98374

DESIGNER OF RECORD



PLAN SET NOTES

PROJECT NUMBER

LC241003

SHEET NAME

RISER

DRAWN

CW

DATE

02/22/2024

DRAWING NUMBER

FA002

CITY APPROVAL STAMP

City of Puyallup
 Development & Permitting Services
ISSUED PERMIT

Building	Planning
Engineering	Public Works
Fire	Traffic

PROJECT NAME
COPPERBERRY CONDOS

PROJECT TYPE
FIRE ALARM PLAN

PROJECT LOCATION
**4002 10TH ST SE
 PUYALLUP, WA 98374**

DESIGNER OF RECORD

PAUL J. POWLOSKI
 Engineering Technician, Level II
 Fire Alarm Systems
 NICET Certification Number: 14853
 Authorizing Signature: _____

PLAN SET NOTES

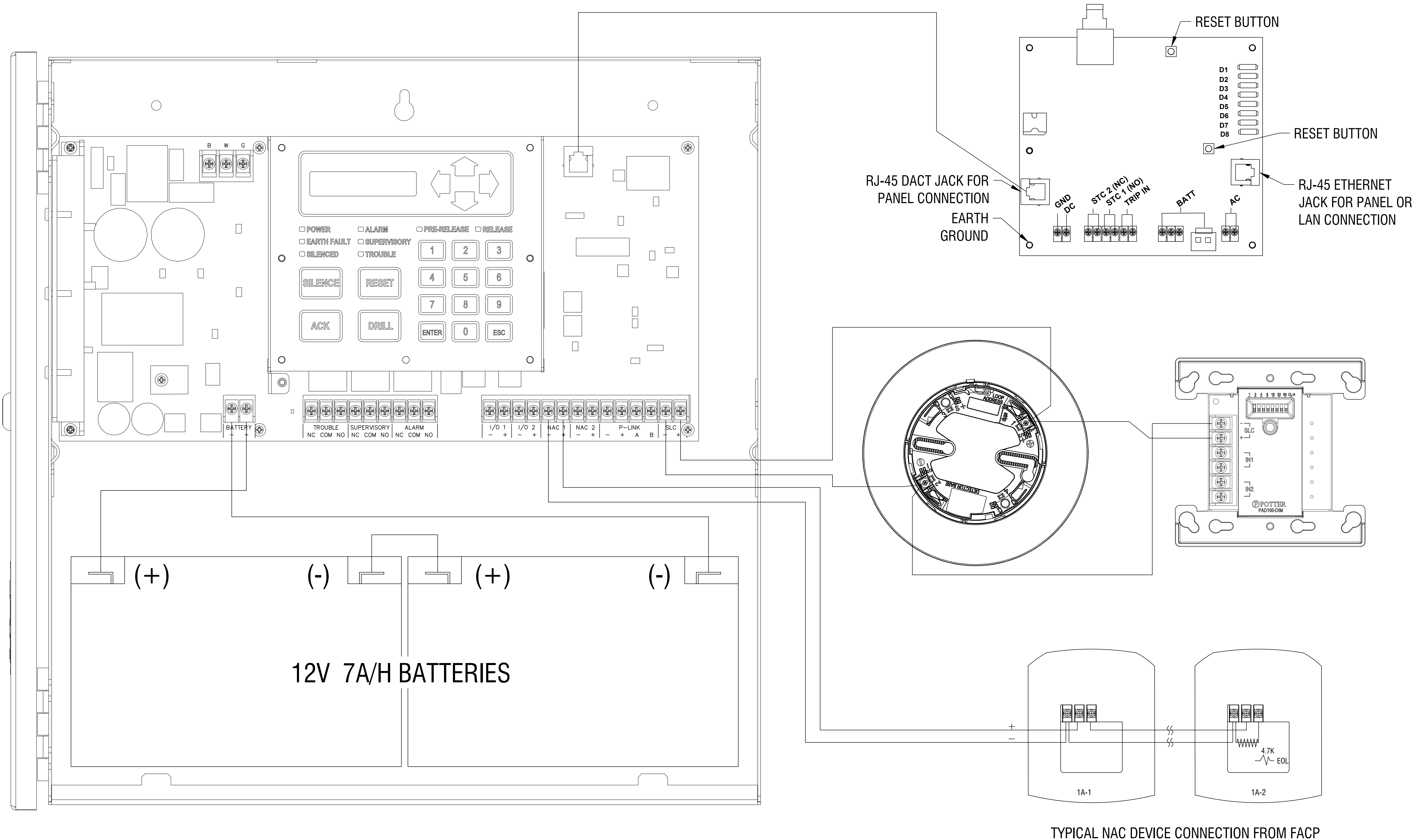
PROJECT NUMBER
LC241003

SHEET NAME
AFC-50 CONNECTION DETAIL

DRAWN: CW DATE: 02/22/2024

DRAWING NUMBER

FA003



TYPICAL NAC DEVICE CONNECTION FROM FACP

POTTER PAD PROTOCOL SLC DEVICE ADDRESSING INFORMATION

PAD Device Dip Switch Addresses Table (Addresses 1-78)																														
Switch Number							Switch Number							Switch Number																
Address	1	2	4	8	16	32	64	Address	1	2	4	8	16	32	64	Address	1	2	4	8	16	32	64							
1	●							27	●	●		●	●			53	●		●		●	●								
2		●						28			●	●	●			54		●	●		●	●								
3	●	●						29	●			●	●			55	●	●	●		●	●								
4			●					30		●		●	●			56				●	●									
5	●		●					31	●	●		●	●			57	●			●	●									
6		●	●					32						●		58		●		●	●									
7	●	●	●					33	●					●		59	●	●		●	●									
8				●				34		●				●		60			●	●	●									
9	●			●				35	●	●				●		61	●			●	●									
10		●		●				36			●			●		62	●	●		●	●									
11	●	●		●				37	●		●			●		63	●	●	●	●	●									
12			●	●				38		●	●			●		64											●			
13	●		●	●				39	●	●	●			●		65	●													
14		●	●	●				40				●		●		66		●												
15	●	●	●	●				41	●			●		●		67	●	●												
16					●			42		●		●		●		68			●											
17	●				●			43	●	●		●		●		69	●		●											
18		●			●			44			●			●		70		●												
19	●	●			●			45	●		●			●		71	●	●		●	●									
20			●		●			46		●	●			●		72				●	●									
21	●		●		●			47	●	●	●			●		73	●			●	●									
22		●	●		●			48					●		74		●			●	●									
23	●	●	●		●			49	●				●		75	●	●			●	●									
24			●		●			50		●			●		76			●	●	●	●									
25	●		●		●			51	●	●			●		77	●		●	●	●	●									
26		●		●	●			52			●		●		78		●	●	●	●	●									

NOTE: Each Box With Circle (●) Indicates Dip Switch is "ON", Each Empty Box Indicates "OFF"

PAD Device Dip Switch Addresses Table (Addresses 79 - 127)																													
Switch Number							Switch Number							Switch Setting Examples															
Address	1	2	4	8	16	32	64	Address	1	2	4	8	16	32	64														
79	●	●	●	●			●	105	●			●	●																
80					●		●	106		●			●	●															
81	●				●		●	107	●	●		●	●																
82		●			●		●	108			●			●															
83	●	●			●		●	109	●		●			●															
84			●		●		●	110		●	●			●															
85	●		●		●		●	111	●		●			●															
86		●	●		●		●	112					●																
87	●	●	●		●		●	113	●				●																
88			●		●		●	114		●			●																
89	●		●		●		●	115	●		●			●															
90		●			●		●	116			●			●															
91	●	●			●		●	117	●		●			●															
92			●		●		●	118		●			●																
93	●		●		●		●	119	●	●			●																
94		●	●		●		●	120					●																
95	●	●	●		●		●	121	●		●			●															
96					●		●	122		●			●																
97	●				●		●	123	●	●			●																
98		●			●		●	124			●			●															
99	●	●			●		●	125	●		●			●															
100			●		●		●	126		●			●																
101	●		●		●		●	127	●	●			●																
102		●	●		●		●						●																
103	●	●			●		●						●																
104				●			●						●																

Switch Setting Examples

1 2 4 8 16 32 64 ON OFF
 [●] [●] [●] [●] [●] [●] [●] ON OFF

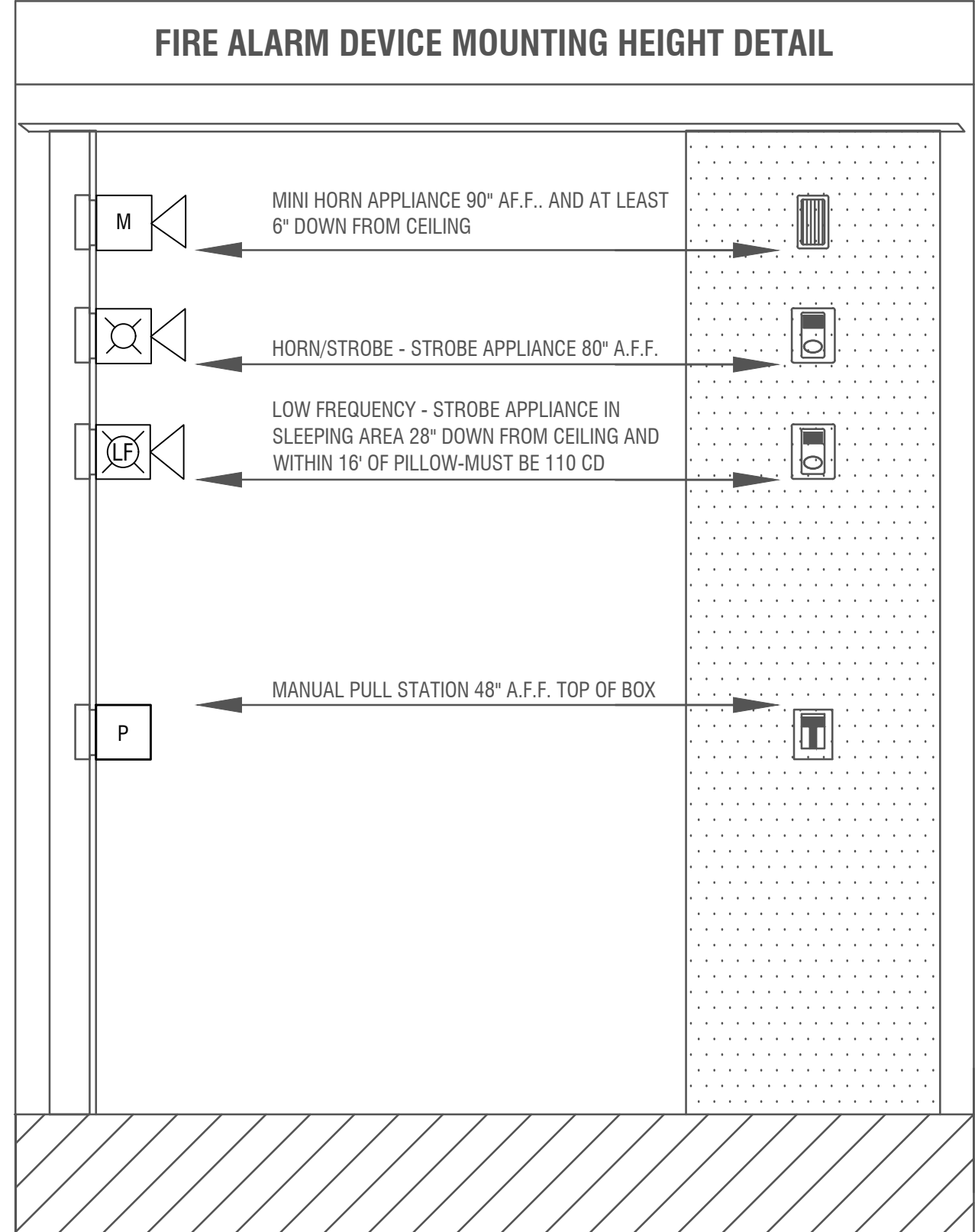
All dip switches are set to the default "OFF" position. (Device Not Addressed)

1 2 4 8 16 32 64 ON OFF
 [●] [●] [●] [●] [●] [●] [●] ON OFF

Dip switches set for address 42. Switches #2, 8 & 32 are "ON". (2 + 8 + 32 = 42)

1 2 4 8 16 32 64 ON OFF
 [●] [●] [●] [●] [●] [●] [●] ON OFF

Dip switches set for address 90. Switches #2, 8, 16 & 64 are "ON". (2 + 8 + 16 + 64 = 90)



CITY APPROVAL STAMP

City of Puyallup
 Development & Permitting Services
 ISSUED PERMIT

Building Planning
 Engineering Public Works
 Fire Traffic

PROJECT NAME: COPPERBERRY CONDOS
 PROJECT TYPE: FIRE ALARM PLAN
 PROJECT LOCATION: 4002 10TH ST SE PUYALLUP, WA 98374

DESIGNER OF RECORD

PAUL J. POWLOSKI
 Engineering Technician, Level II
 Fire Alarm Systems
 NICET Certification Number: 14853

PLAN SET NOTES

1	2	3	4	5	6	7
---	---	---	---	---	---	---

PROJECT NUMBER: LC241003
 SHEET NAME: DETAIL
 DRAWN: CW DATE: 02/22/2024
 DRAWING NUMBER:

FA004

CITY APPROVAL STAMP

City of Puyallup
 Development & Permitting Services
ISSUED PERMIT

Building	Planning
Engineering	Public Works
Fire	Traffic

PROJECT NAME
COPPERBERRY CONDOS

PROJECT TYPE
FIRE ALARM PLAN

PROJECT LOCATION
**4002 10TH ST SE
 PUYALLUP, WA 98374**

DESIGNER OF RECORD

PAUL J. POWLOSKI
 Engineering Technician, Level III
 Fire Alarm Systems
 NICTET Certification Number: 14853
 Authorizing Signature: _____

PLAN SET NOTES

PROJECT NUMBER
LC241003

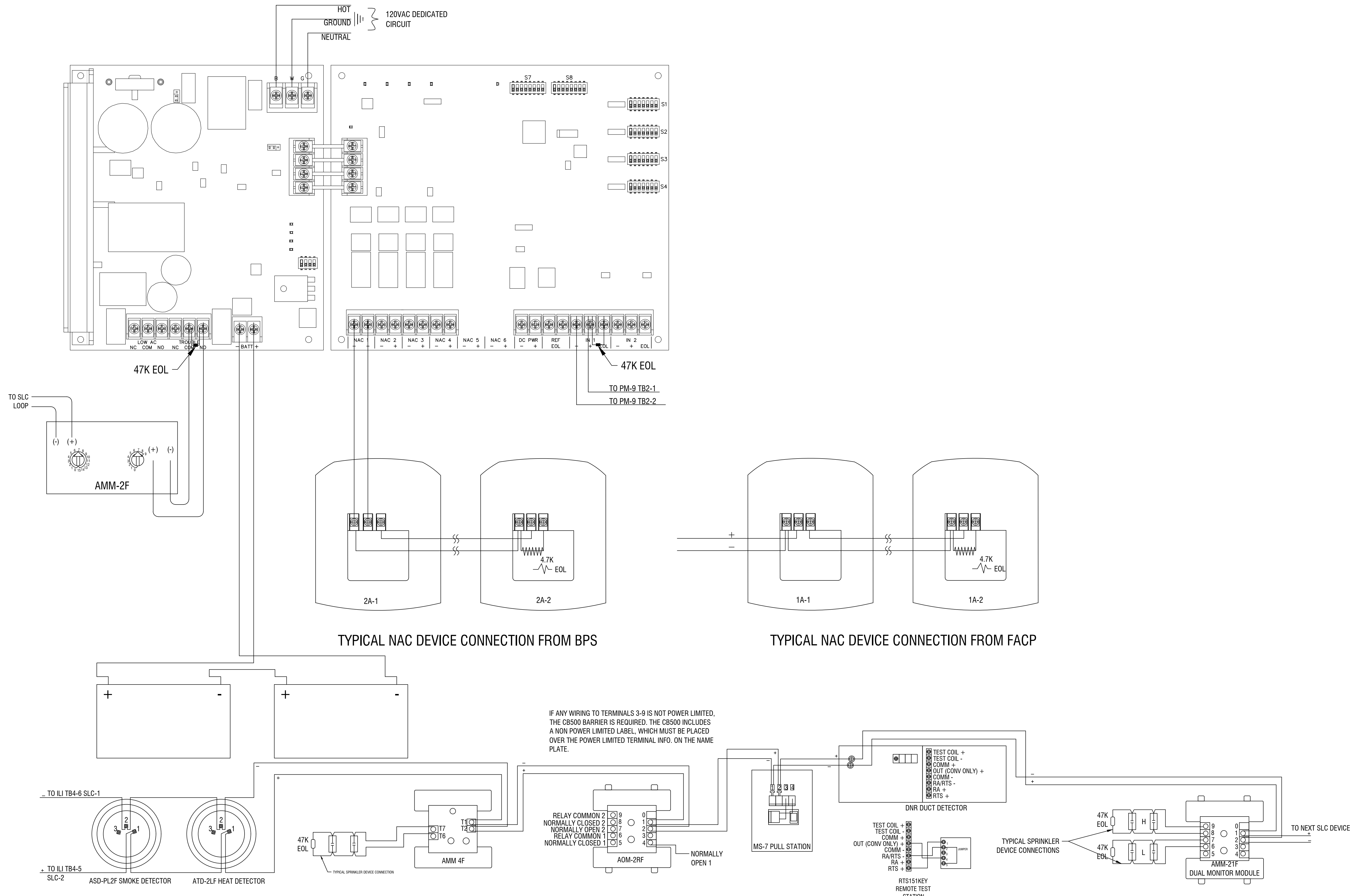
SHEET NAME
POTTER PSN-64 CONNECTION DETAIL

DRAWN
 CW

DATE
 02/22/2024

DRAWING NUMBER

FA005



TYPICAL SLC DEVICE CONNECTIONS (POTTER PSN-64)

CITY APPROVAL STAMP

City of Puyallup
 Development & Permitting Services
ISSUED PERMIT

Building	Planning
Engineering	Public Works
Fire	Traffic

PROJECT NAME
COPPERBERRY CONDOS

PROJECT TYPE
FIRE ALARM PLAN

PROJECT LOCATION
**4002 10TH ST SE
 PUYALLUP, WA 98374**

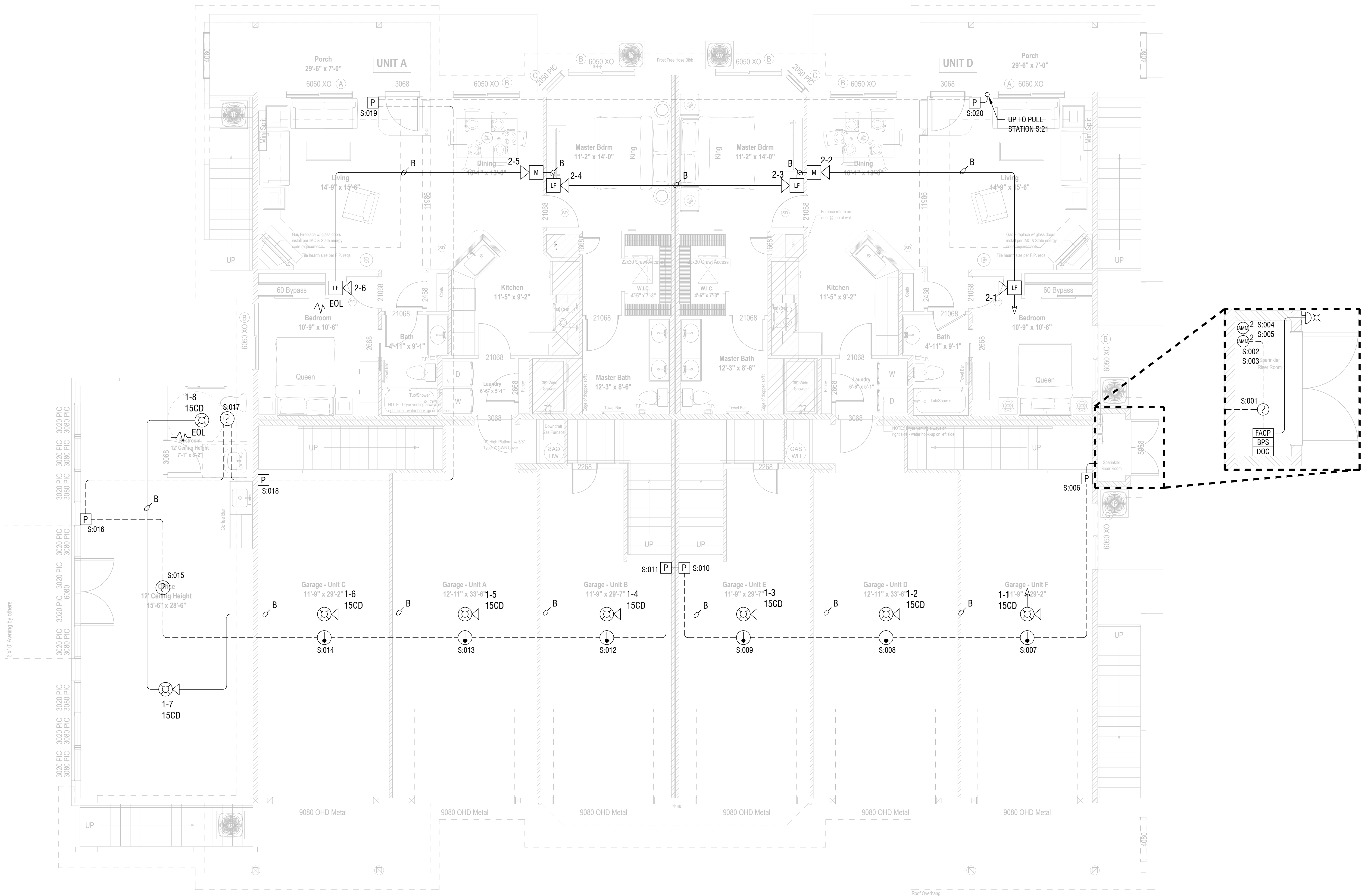
DESIGNER OF RECORD

PAUL J. POWLOSKI
 Engineering Technician, Level II
 Fire Alarm Systems
 NICET Certification Number: 148553
 Authorizing Signature: _____

PLAN SET NOTES

PROJECT NUMBER	LC241003
SHEET NAME	MAIN FLOOR
DRAWN	CW
DATE	02/22/2024
DRAWING NUMBER	

FA100



MAIN FLOOR
 1/4" = 1'-0"

6'x10' Availing by others

Roof Overhang

CITY APPROVAL STAMP

City of Puyallup
 Development & Permitting Services
ISSUED PERMIT

Building	Planning
Engineering	Public Works
Fire	Traffic

PROJECT NAME
COPPERBERRY CONDOS

FIGURE TYPE
FIRE ALARM PLAN

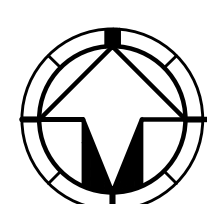
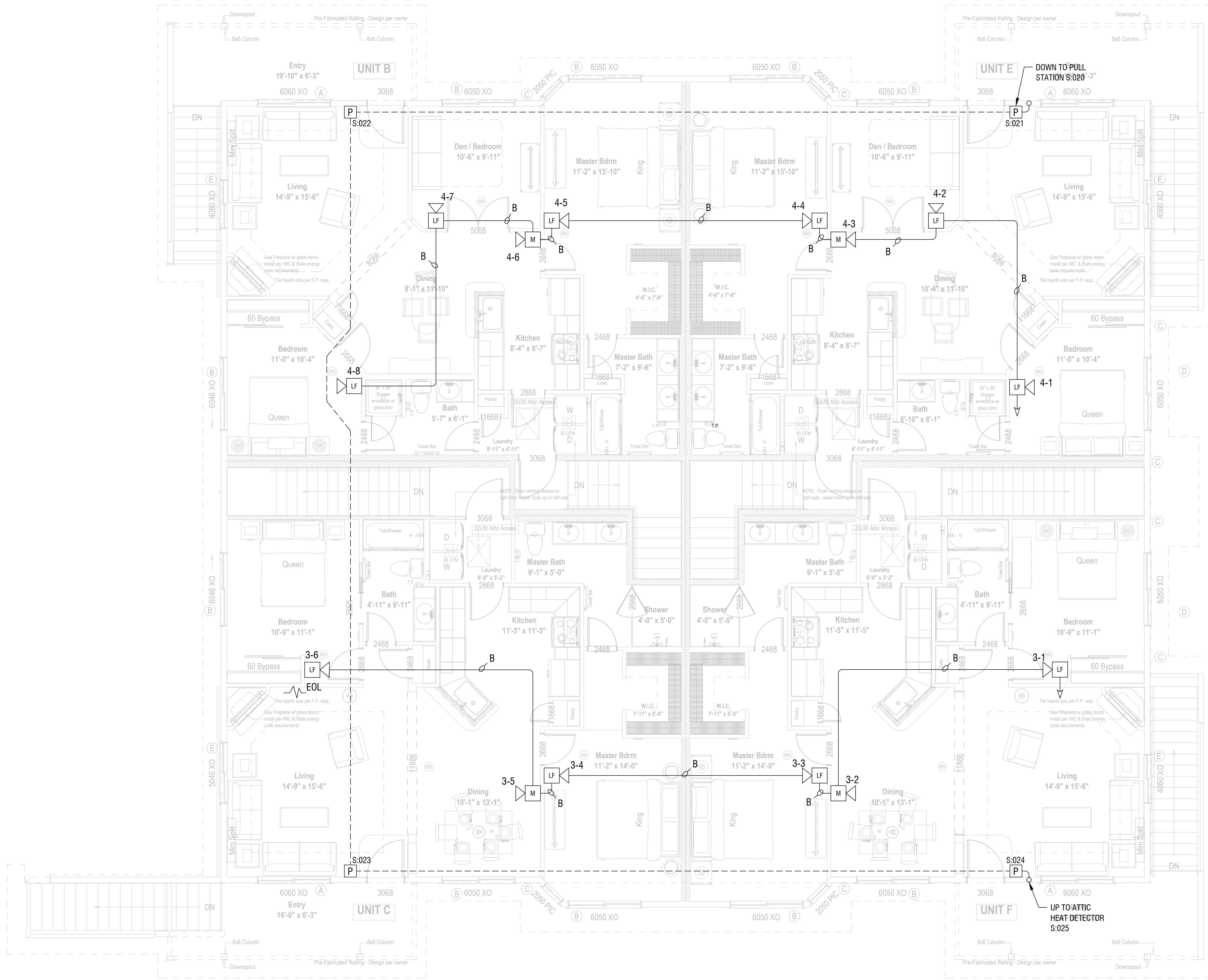
PROJECT LOCATION
**4002 10TH ST SE
 PUYALLUP, WA 98374**

DESIGNER OF RECORD

PAUL J. POWLOSKI
 Engineering Technician, Level II
 Fire Alarm Systems
 NICTET Certification Number: 148653
 Authorizing Signature: _____

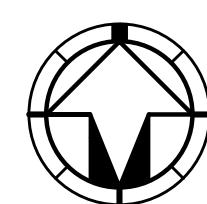
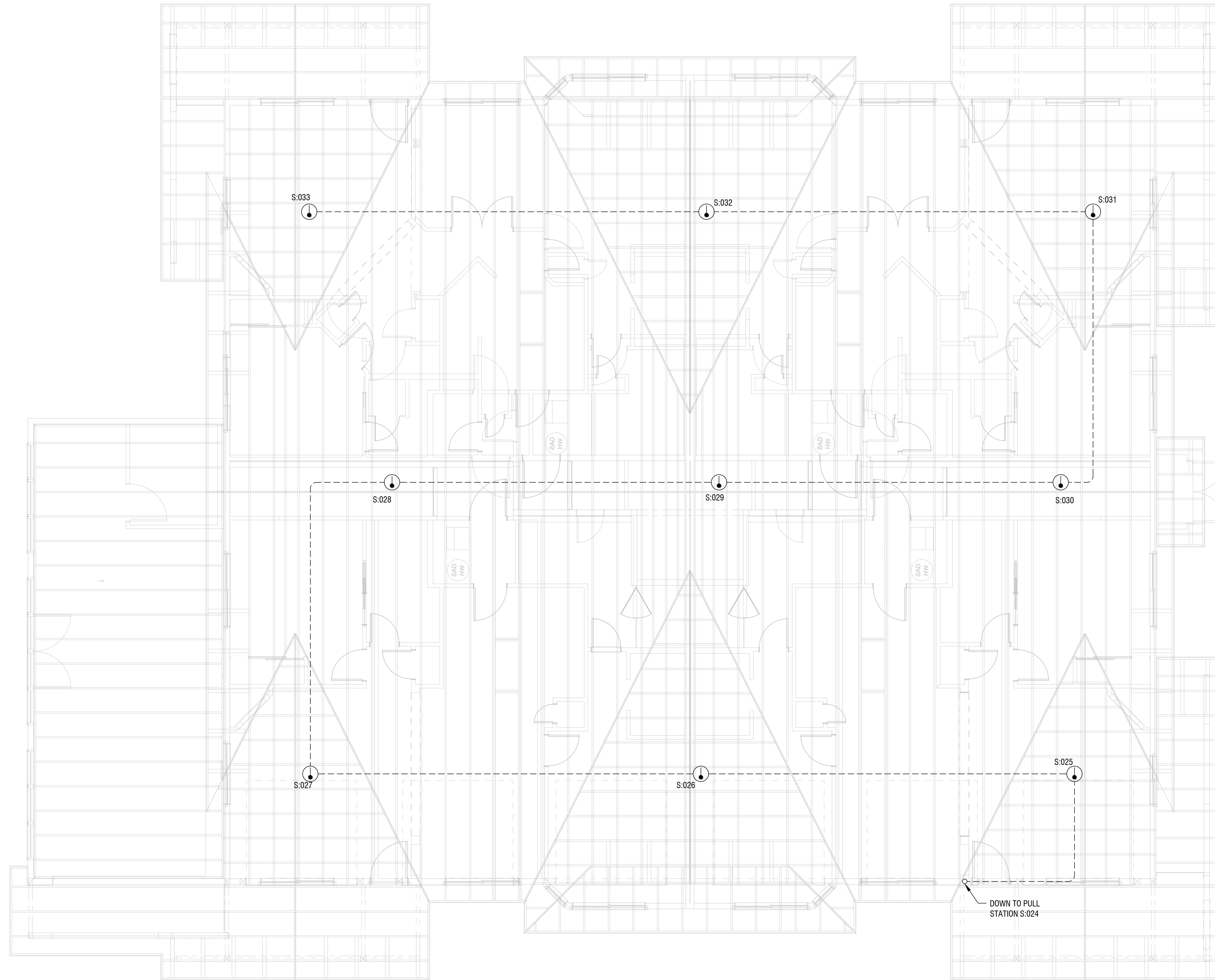
PLAN SET NOTES

PROJECT NUMBER	LC241003
SHEET NAME	UPPER FLOOR
DRAWN	CW
DATE	02/22/2024
DRAWING NUMBER	FA101



UPPER FLOOR

1/4" = 1'-0"



ATTIC PLAN

1/4" = 1'-0"

INTEGRATED
 P U Y A L L U P S P O K A N E
 11409 58th Ave E-Puyallup, WA, PH 253-848-6998 FX 253-848-0542

CITY APPROVAL STAMP

City of Puyallup
 Development & Permitting Services
ISSUED PERMIT

Building	Planning
Engineering	Public Works
Fire	Traffic

PROJECT NAME
COPPERBERRY CONDOS
 PROJECT TYPE
FIRE ALARM PLAN
 PROJECT LOCATION
**4002 10TH ST SE
 PUYALLUP, WA 98374**

DESIGNER OF RECORD

PLAN SET NOTES

PROJECT NUMBER
 LC241003

SHEET NAME
 ATTIC PLAN

DRAWN: CW DATE: 02/22/2024

DRAWING NUMBER

FA102