

**FOUNDATION PLAN**  
 1/8" = 1'-0"


- FOUNDATION PLAN NOTES:**
- COORDINATE ALL DIMENSIONS WITH ARCHITECTURAL DRAWINGS.
  - INDICATES 12" CONCRETE WALL WITH #5 @ 12" O.C. EACH FACE EACH WAY, UNLESS NOTED OTHERWISE ON PLAN. FOR TYPICAL DETAILS SEE 1/53.1, 4/53.3, 5/53.3.
  - INDICATES CONCRETE COLUMN, SEE 3/53.3 FOR COLUMN SCHEDULE.
  - TOP OF SLAB = 0'-0" (USGS 99'-0") UNLESS NOTED OTHERWISE.
  - FOR TYPICAL CONCRETE SLAB-ON-GRADE DETAILS SEE SHEET 1/53.2.
  - FOR TYPICAL GRADE BEAM ELEVATION AND DETAILS SEE 6/53.1.
  - "F\_" INDICATES CONCRETE SPREAD FOOTING. FOR SCHEDULE SEE 1/53.3.
  - TOP OF FOOTING ELEVATIONS = -1'-0" UNLESS NOTED OTHERWISE ON PLANS AND DETAILS.

PRRWF20240597 - RETAINING WALL PERMIT FOR HAMPTON INN

**FULL SIZED LEDGIBLE COLOR PLANS ARE REQUIRED TO BE PROVIDED BY THE PERMITTEE ON SITE FOR ALL INSPECTIONS (MIN. PLAN SIZE 24" X 36")**

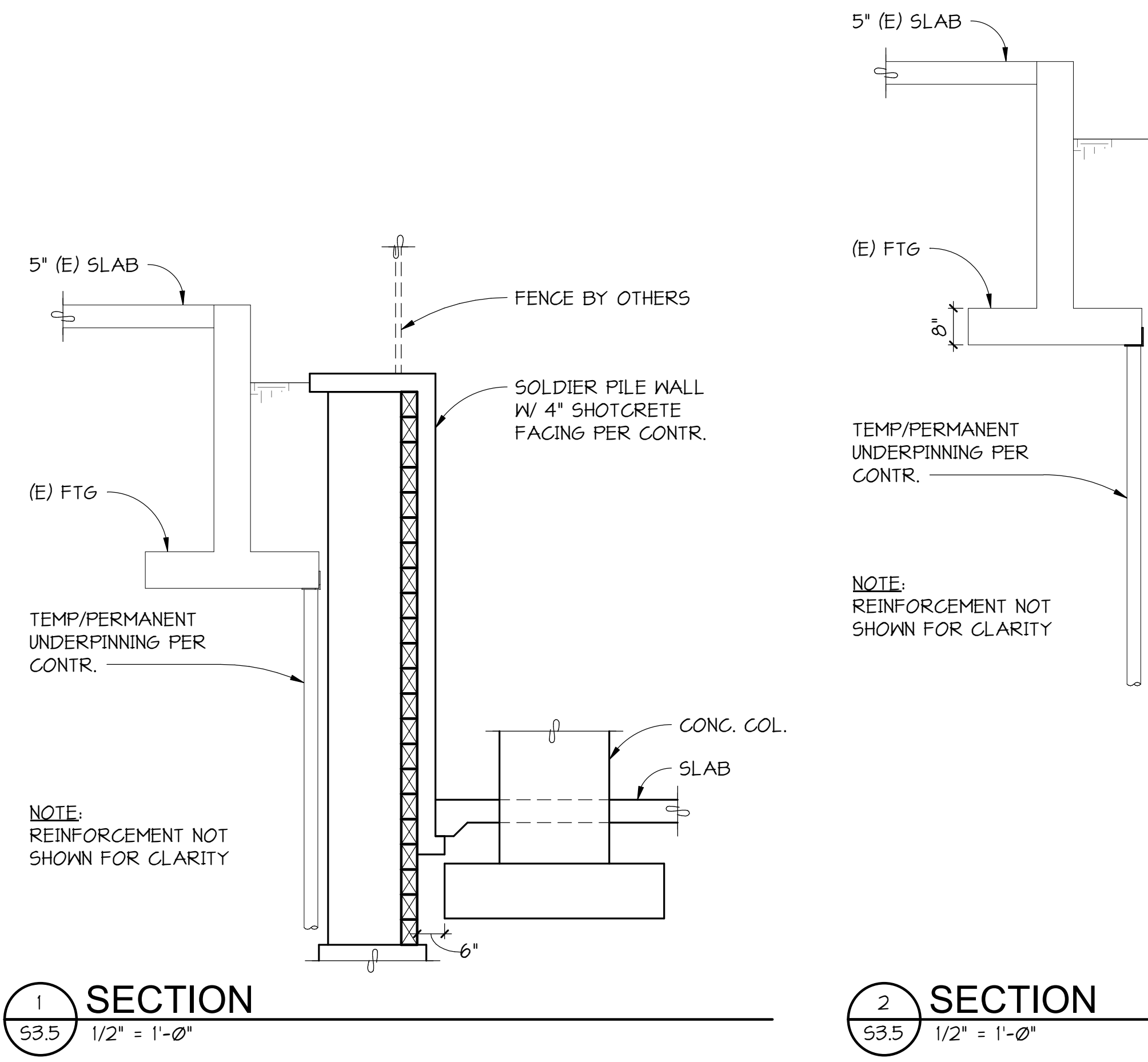
**City of Puyallup Building ACCEPTED**

JMontgomery  
 04/12/2024  
 11:22:14 AM



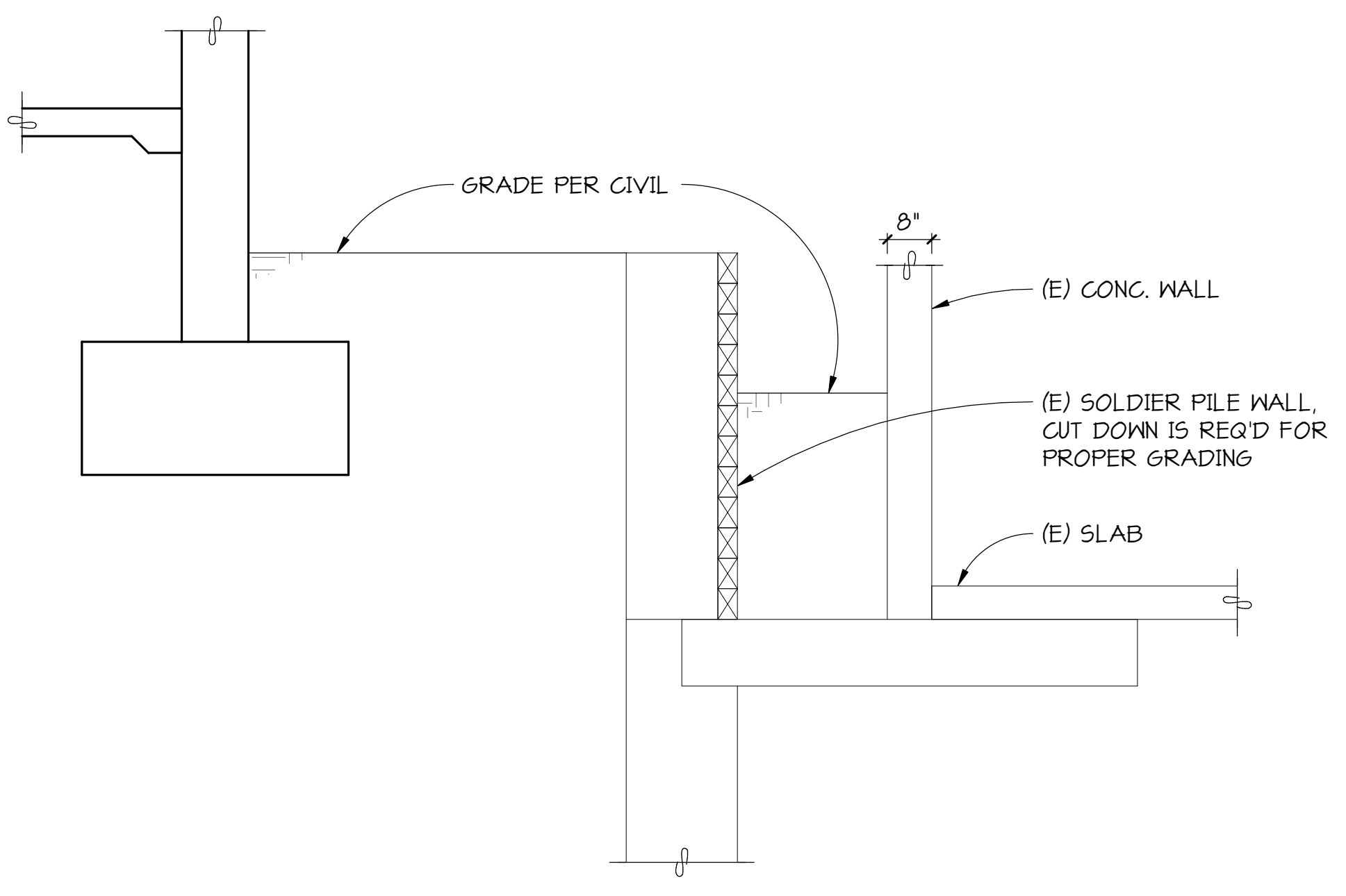
C:\\_Revit Models\18741 Hampton Inn Puyallup.v2018 (Central)\_dhome@pcs-structural.com.rvt

1/13/2020 3:16:49 PM

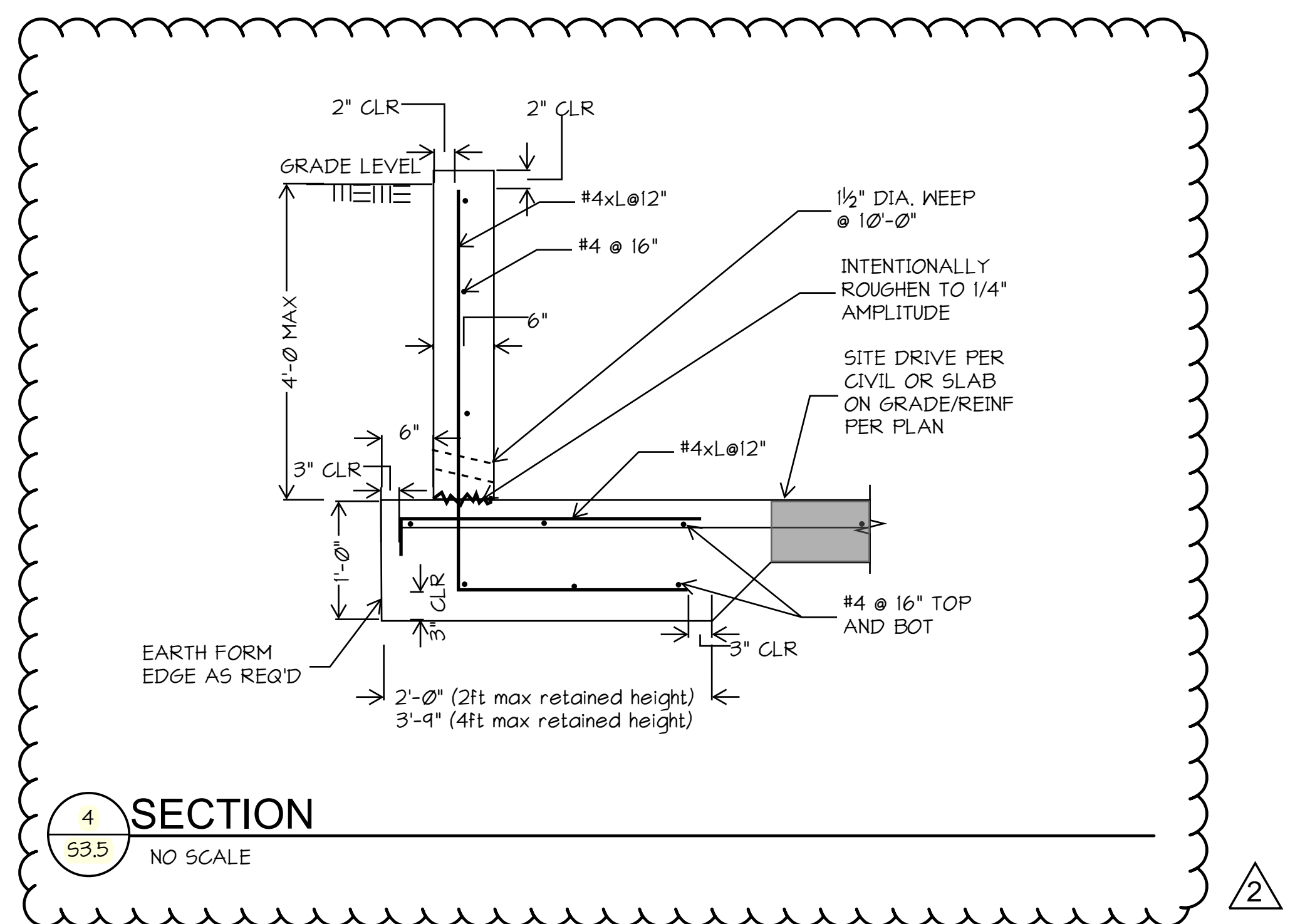


**1 SECTION**  
S3.5 1/2" = 1'-0"

**2 SECTION**  
S3.5 1/2" = 1'-0"



**3 SECTION**  
S3.5 1/2" = 1'-0"



**4 SECTION**  
S3.5 NO SCALE

PRRWF20240597 - RETAINING WALL PERMIT FOR HAMPTON INN

City of Puyallup  
Development & Permitting Services  
**ISSUED PERMIT**

Building	Planning
Engineering	Public Works
Fire	Traffic

ISSUE DATE 07/11/23  
FLOOR PLAN REVISION

REV	DATE	COMMENT
2	03/29/24	RETAINING WALL

**PCS**  
Structural Solutions  
Seattle | Tacoma | Portland  
www.pcs-structural.com



**FOUNDATION DETAILS**  
Addition to Hampton Inn & Suites  
Hampton Inn & Suites  
1515 S. Meridian, Puyallup, WA

Job #: 18741  
Date:  
Revs:

**S3.5**  
PERMIT SET