

IF SHEET IS LESS THAN 30"x42" IT IS A REDUCED PRINT SCALE REDUCED ACCORDINGLY

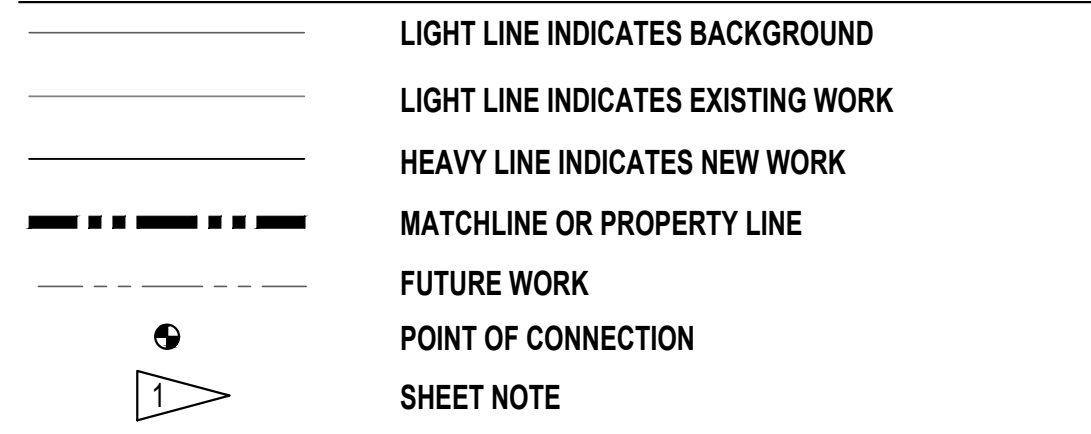
ABBREVIATIONS

Table of abbreviations for mechanical components, including AIR, AMP, ABOVE, ABOVE FINISHED FLOOR, AMBIENT, ATMOSPHERE, AVERAGE, BLIND FLANGE, BELOW FINISHED FLOOR, BOTTOM HORIZONTAL DISCHARGE, BRAKE HORSEPOWER, etc.

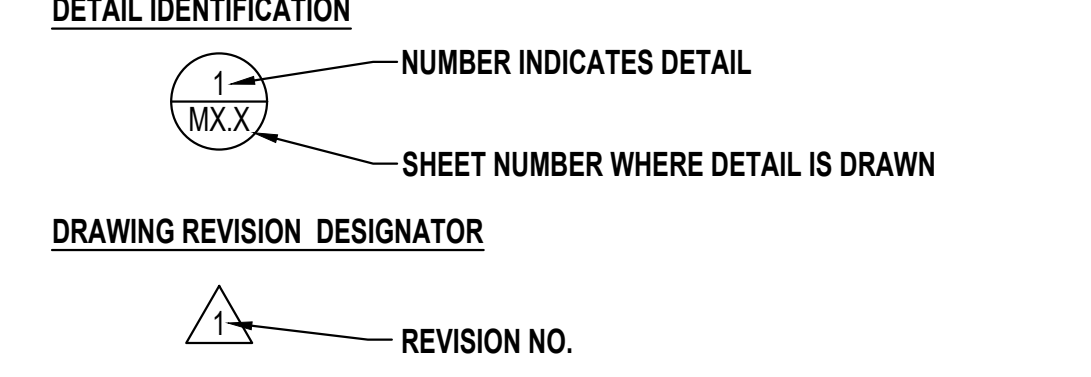
GENERAL NOTES:

- 1. THE FOLLOWING NOTES APPLY TO ALL MECHANICAL DRAWINGS. ADDITIONAL NOTES MAY BE INDICATED ON INDIVIDUAL DRAWINGS.
2. DRAWINGS INDICATE CONNECTIONS FOR EQUIPMENT TO BE FURNISHED BY THE OWNER OR AS THE WORK OF OTHER TRADES.
3. COORDINATE THE PHASING AND INSTALLATION OF NEW WORK WITH THE WORK OF ALL OTHER TRADES.
4. LOCATE MECHANICAL DEVICES (E.G. TEMPERATURE AND HUMIDITY SENSORS, PANELS, AND SWITCHES), SO THAT THEY DO NOT CONFLICT WITH GENERAL CONSTRUCTION (E.G. WAINSCOT, DOOR HARDWARE), ELECTRICAL DEVICES (E.G. LIGHT SWITCHES, SPEAKERS, OUTLETS), AND THE WORK OF OTHER TRADES.
5. REFER TO ARCHITECTURAL AND STRUCTURAL DRAWINGS FOR GENERAL CONSTRUCTION INCLUDING, BUT NOT LIMITED TO, PENETRATION DETAILS, FLASHING AND SEALING DETAILS, AND OTHER ELEMENTS OF GENERAL CONSTRUCTION.
6. MECHANICAL DRAWINGS SHOW APPROXIMATE LOCATIONS FOR FLOOR DRAINS.
7. COORDINATE EQUIPMENT POWER CONNECTION REQUIREMENTS AND ELECTRICAL CHARACTERISTICS WITH ELECTRICAL DRAWINGS AND CONNECTION REQUIREMENTS.
8. EQUIPMENT SHORT CIRCUIT CURRENT RATINGS (SCCR) SHALL BE NOT LESS THAN THE INTERRUPTING RATING OF THE BRANCH CIRCUIT OVER CURRENT PROTECTIVE DEVICE SUPPLYING POWER TO THE EQUIPMENT.
9. COORDINATE THE LOCATION OF WORK TO PROVIDE CLEARANCES OVER LIGHTING FIXTURES AND OTHER CEILING MOUNTED DEVICES AS REQUIRED TO ALLOW FOR REMOVAL AND MAINTENANCE ACCESS.
10. DO NOT RESTRICT ACCESS TO ELECTRICAL CABLE TRAYS.
11. PROVIDE SUPPORTS AND SEISMIC RESTRAINTS FOR PIPES AND EQUIPMENT AS SPECIFIED, AS REQUIRED, AND AS SHOWN ON THE DRAWINGS.
12. DO NOT CORE DRILL OR DRILL THROUGH BEAMS, COLUMNS OR SHEAR WALLS UNLESS INDICATED ON STRUCTURAL DRAWINGS OR AS APPROVED BY THE STRUCTURAL ENGINEER.
13. PROVIDE PIPE SLEEVES AND PENETRATION SEALS AS REQUIRED FOR THE INSTALLATION OF PIPING SYSTEMS.
14. COORDINATE THE LAYOUT OF EQUIPMENT, PIPING, AND APPURTENANCES SO THAT IT FITS INTO THE SPACE ALLOTTED.
15. DRAWINGS ARE DIAGRAMMATIC AND SHOW APPROXIMATE LOCATIONS OF EQUIPMENT, PIPING, AND APPURTENANCES.
16. PROVIDE MAXIMUM HEADROOM AND CLEARANCE BELOW PIPING AND EQUIPMENT AND ASSOCIATED SUPPORTS AND RESTRAINTS.
17. REFER TO EQUIPMENT SCHEDULES FOR DESIGN CAPACITIES.
18. TO ENHANCE THE CLARITY OF PLAN DRAWINGS, AND WHERE NOT NECESSARY TO DESCRIBE THE REQUIRED SIZE, INDIVIDUAL SEGMENTS OF PIPE BETWEEN CONNECTIONS MAY BE SHOWN WITHOUT A SIZE INDICATED.
19. WHERE NOT INDICATED ON PLANS, REFER TO EQUIPMENT SCHEDULES AND DETAILS FOR INLET AND OUTLET PIPE SIZES.
20. INSTALL DRAINS AT ALL LOW POINTS IN PIPING, INCLUDING ANY TRAPPED PORTIONS OF PIPING.
21. INSULATE ALL CHILLED WATER AND CONDENSER WATER PIPING WITH 1-INCH CLOSED CELL FOAM IN ACCORDANCE WITH TABLE C403.10.3 OF THE 2018 WASHINGTON STATE ENERGY CODE (WSEC).
22. THE FOLLOWING IS A LIST OF DEFERRED SUBMITTALS ITEMS.
A. SEISMIC AND WIND RESTRAINT
23. PROVIDE COMMISSIONING IN ACCORDANCE WITH THE REQUIREMENTS OF THE 2018 WSEC.
24. REFER TO THE WSEC COMPLIANCE FORMS FOR ADDITIONAL MECHANICAL REQUIREMENTS.

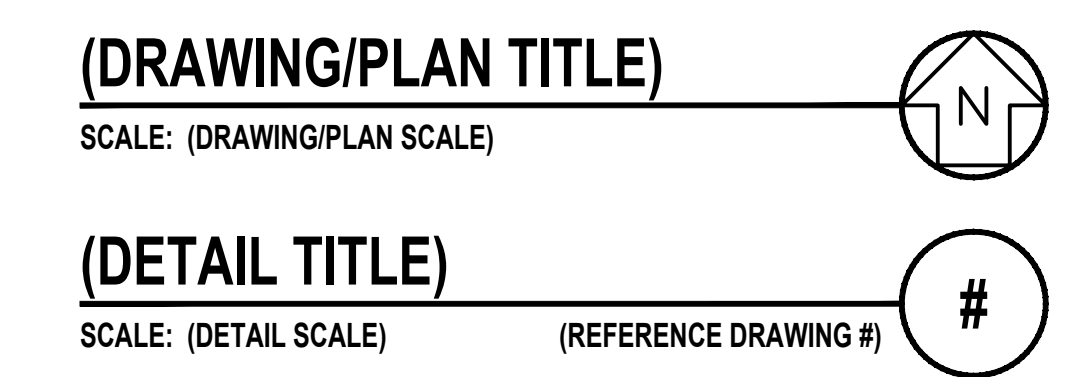
GENERAL SYMBOLS



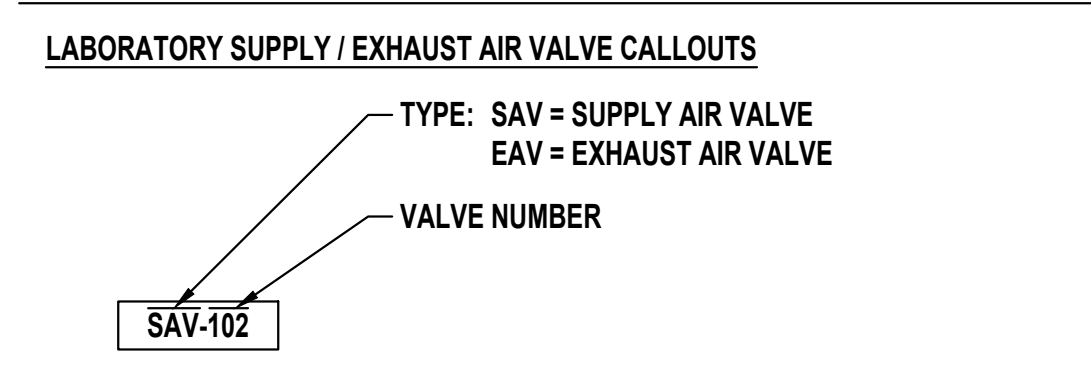
REFERENCE CALLOUTS



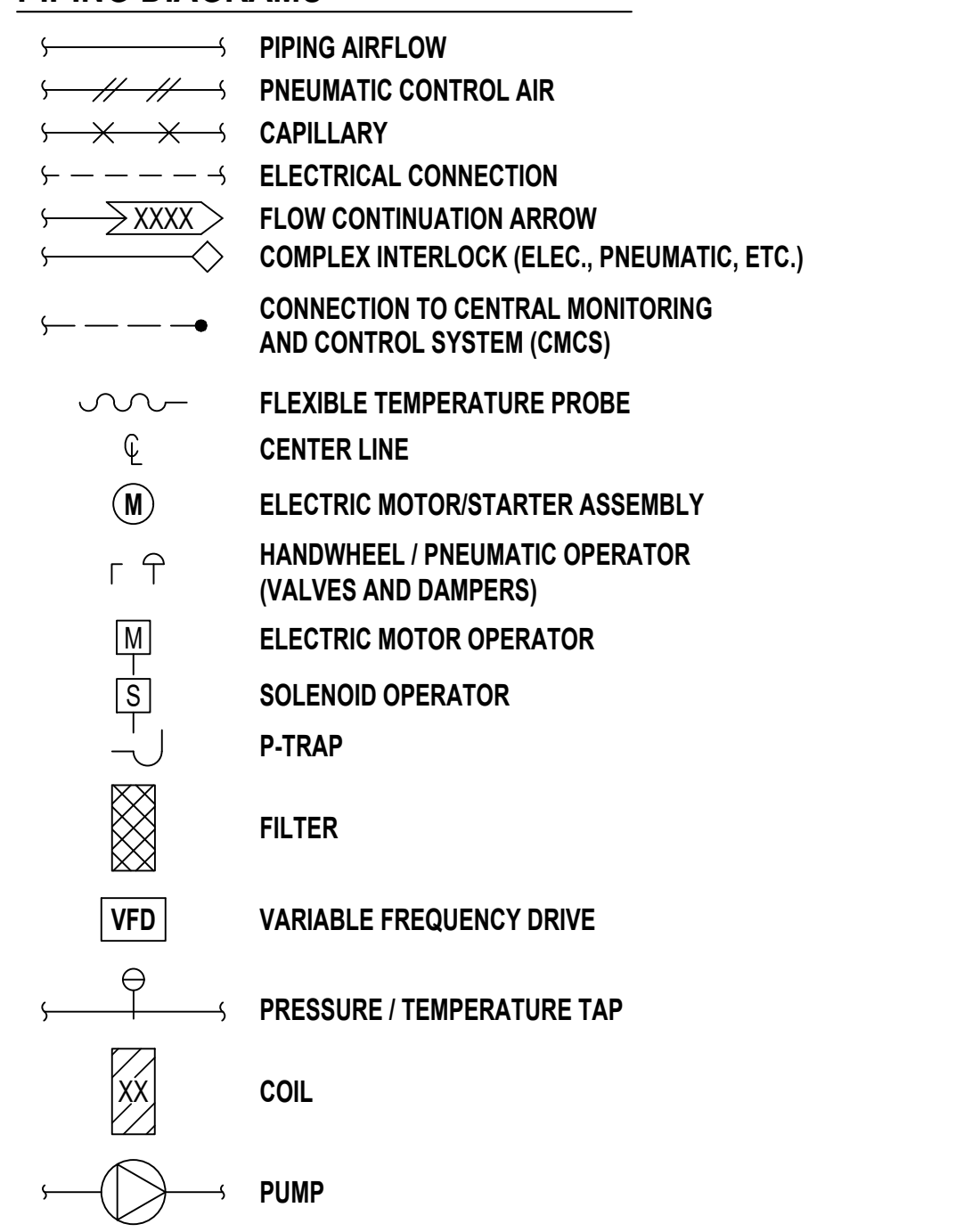
PLAN AND DETAIL TITLE CALLOUT



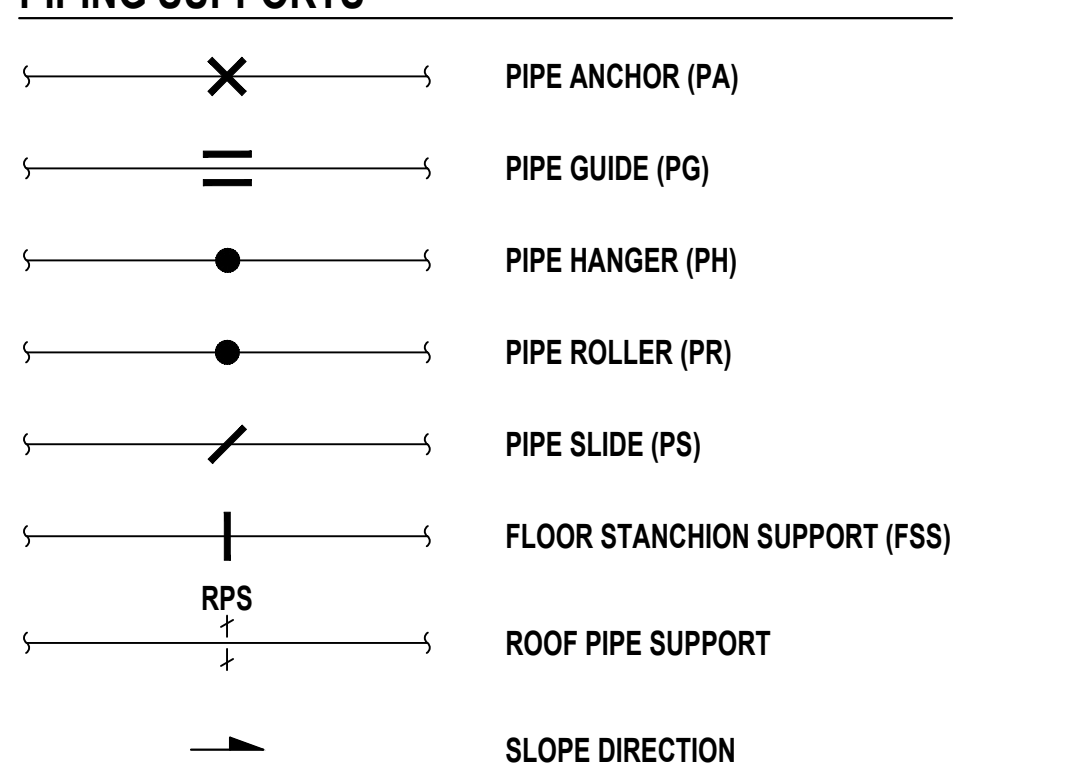
EQUIPMENT CALLOUTS



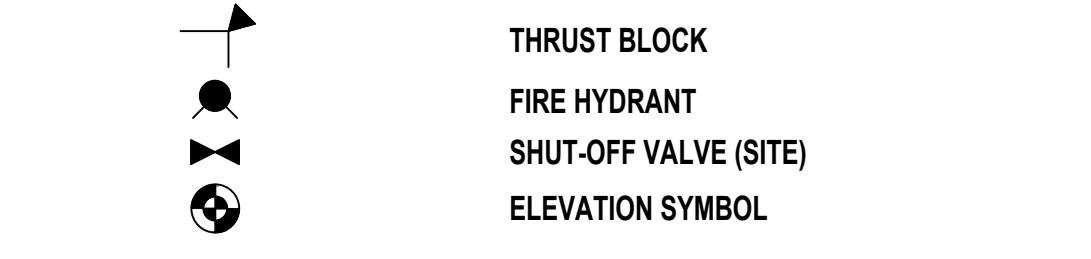
PIPING DIAGRAMS



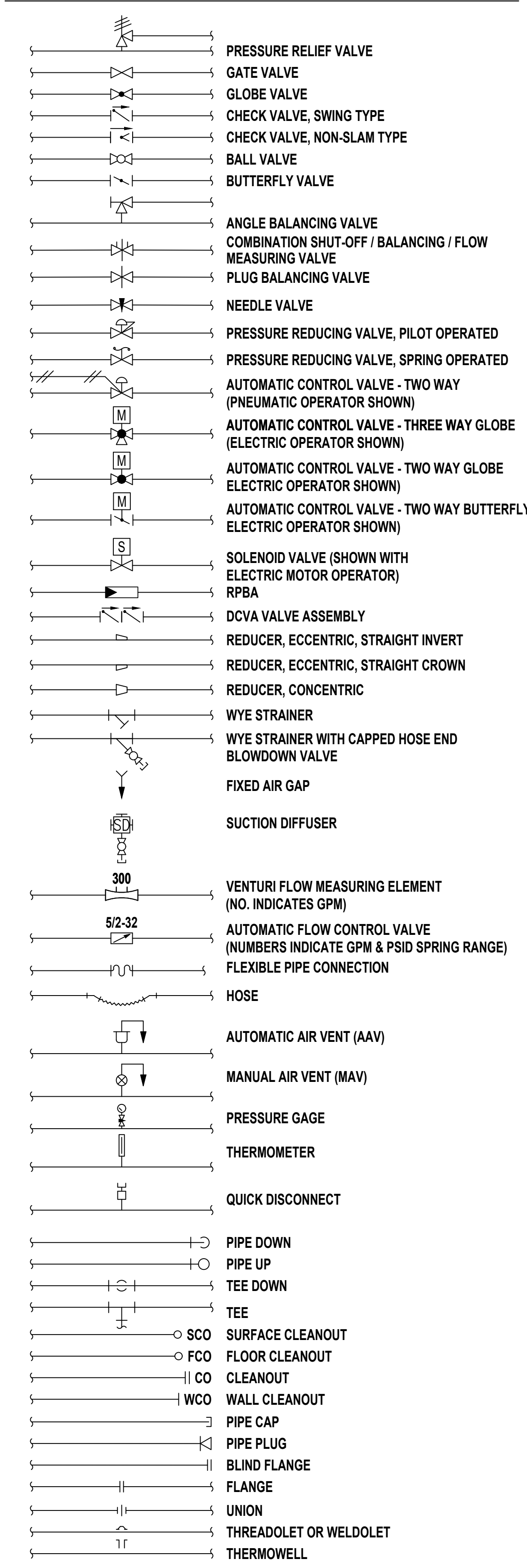
PIPING SUPPORTS



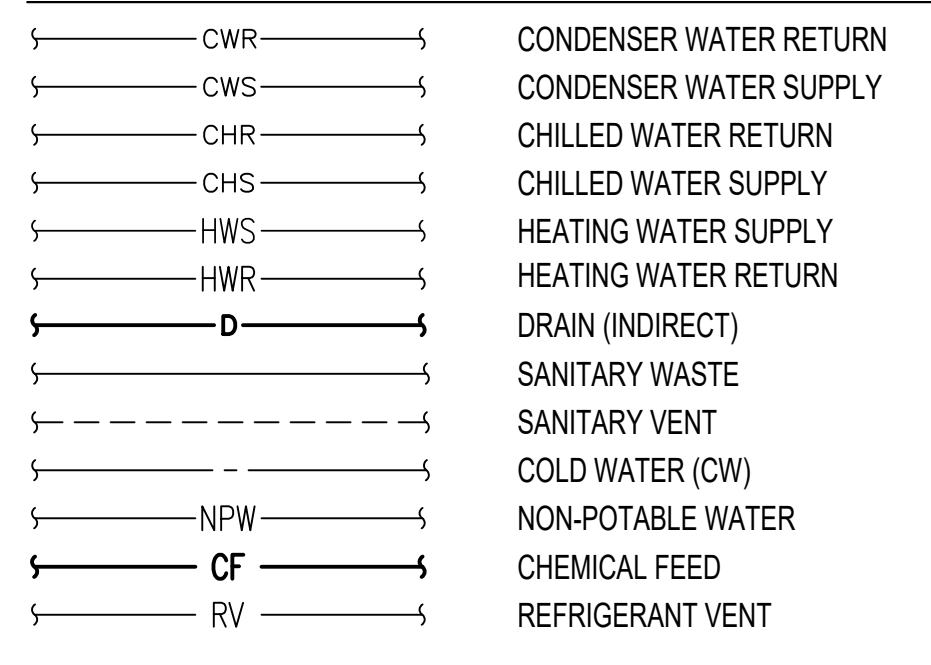
SITE WORK



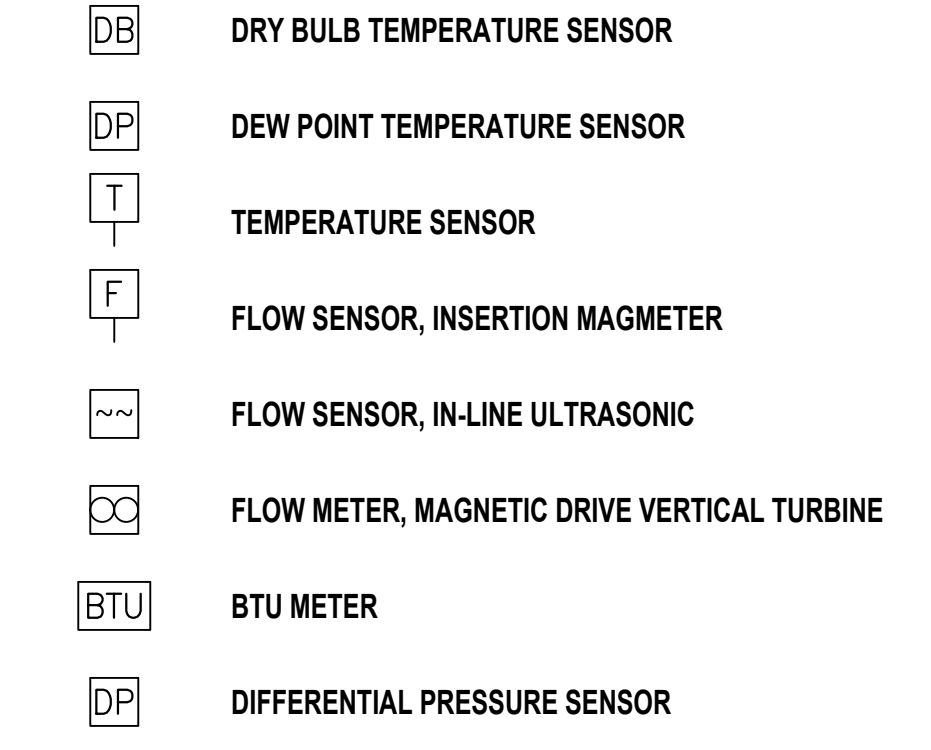
PIPING VALVES / FITTINGS



PIPING TYPES



CONTROLS



FULL SIZED LEDGIBLE COLOR PLANS ARE REQUIRED TO BE PROVIDED BY THE PERMITTEE ON SITE FOR ALL INSPECTIONS (MIN. PLAN SIZE 24" X 36")

City of Puyallup Building Accepted stamp with date 04/19/2024 and time 11:29:29 AM.

Vertical sidebar containing: REVISION table, Wood Harbinger logo, City of Puyallup Building Accepted stamp, PRMH20240593 permit number, City of Puyallup Development & Permitting Services logo, centeris logo, and project title: CENTERIS DATA CENTERS DATA CENTER EXPANSION 2023.

ISSUE FOR CONSTRUCTION 2-27-24

PROJECT DESCRIPTION:

THIS PROJECT IS AN EXPANSION OF THE ORIGINAL PROJECT BUILD-OUT FOR A WATER-COOLED DATA CENTER INSTALLATION. WATER COOLED-CHILLERS, COOLING TOWERS, HEAT EXCHANGERS FOR WATERSIDE ECONOMIZER, AND PUMPS PROVIDE CHILLED WATER DIRECTLY TO SELF-CONTAINED SERVER RACK WITH BUILT-IN COOLING COILS. THE ORIGINAL SYSTEM CONSISTED OF TWO CHILLERS WITH DEDICATED PRIMARY CHILLED WATER PUMPS, TWO COOLING TOWERS WITH DEDICATED CONDENSER WATER PUMPS, AND A PLATE-AND-FRAME HEAT EXCHANGER ALONG WITH MANY OTHER SYSTEM COMPONENTS. THE ORIGINAL SYSTEM WAS BUILT WITH FUTURE CAPACITY FOR EXPANSION OF THIS WATER-COOLED SYSTEM.

THE SYSTEM IS SIZED FOR THE CUSTOMER'S ALLOTTED ALLOWANCE OF 4-MEGAWATTS OF SERVER CAPACITY. THE COOLING SYSTEM IS DESIGNED WITH N+1 REDUNDANCY TO PROVIDE THE TOTAL CAPACITY WITH ONE CHILLER AND COOLING TOWER ALONG WITH THEIR PUMPS AS A BACKUP IF ANY COMPONENT FAILS. HOWEVER, THE CONTROLS SEQUENCE WAS DEVELOPED TO ALLOW FOR ALL CHILLERS/TOWERS/PUMPS TO RUN AT A REDUCED LOAD TO OPTIMIZE EFFICIENCY AND REDUCE ENERGY CONSUMPTION.

Table with project metadata: DATE (2/27/24), SCALE (NONE), ENGR (TJB), DRWN (TJB), CHKD (PMG), APPR (NRB), JOB (23025.00).

IF SHEET IS LESS THAN 30"x42" IT IS A REDUCED PRINT SCALE REDUCED ACCORDINGLY

WATER COOLED CHILLER			
EQUIPMENT NUMBER	(E)CH-1[1]	(E)CH-2	CH-3
LOCATION	MECHANICAL ROOM	MECHANICAL ROOM	MECHANICAL ROOM
TYPE	CENTRIFUGAL	CENTRIFUGAL	CENTRIFUGAL
EVAPORATOR			
CAPACITY-TONS	575	575	575
FLUID	WATER	WATER	WATER
REFRIGERANT TYPE	R-134A	R-134A	R-134A
CAPACITY-GPM	587.7	587.7	587.7
ENT WATER TEMP-DEG F	78.5	78.5	78.5
LVG WATER TEMP-DEG F	55	55	55
MAX PRESS DROP-FT H2O	15.9	15.9	15.9
FOULING FACTOR	0.0001	0.0001	0.0001
TUBE PASSES	3	3	3
CONNECTION SIZE-INCHES	8	8	8
CONDENSER-WATER COOLED			
FLUID	WATER	WATER	WATER
CAPACITY-GPM	1725	1725	1725
ENT WATER TEMP-DEG F	75	75	75
LVG WATER TEMP-DEG F	83.74	83.74	83.74
MAX PRESS DROP-FT H2O	20.1	20.1	20.1
FOULING FACTOR	0.00025	0.00025	0.00025
TUBE PASSES	2	2	2
CONNECTION SIZE-INCHES	10	10	10
PERFORMANCE CRITERIA			
EFFICIENCY-KW/TON	0.343	0.343	0.343
NPLV-KW/TON	0.2111	0.2111	0.2111
SPEED CONTROL	VARIABLE	VARIABLE	VARIABLE
ELECTRICAL			
MAX RATED LOAD AMP-RLA	600	600	600
MAX LOCKED ROTOR AMP-LRA	1950	1950	1950
MIN CIRCUIT AMPACITY-AMPERES	316	316	316
VOLTS-PHASE-HERTZ	460-3-60	460-3-60	460-3-60
STANDARD OF ACCEPTANCE			
MAKE	YORK	YORK	YORK
MODEL	YKE3EQ7-EKG	YKE3EQ7-EKG	YKE3EQ7-EKG
MAX OPERATING WEIGHT-LBS	21882	21882	21882
REMARKS			
[1] FURNISH w/ HOT GAS BYPASS.			

COOLING TOWER			
EQUIPMENT NUMBER	(E)CT-1	(E)CT-2	CT-3
SYSTEM	CHILLED WATER	CHILLED WATER	CHILLED WATER
LOCATION	MECHANICAL YARD	MECHANICAL YARD	MECHANICAL YARD
TYPE	OPEN TOWER	OPEN TOWER	OPEN TOWER
TOWER SECTION			
CAPACITY-GPM	1725	1725	1725
ENT WATER TEMP-DEG F	81.3	81.3	81.3
LVG WATER TEMP-DEG F	73.4	73.4	73.4
ENT AIR TEMP-DEG F DB	66.8	66.8	66.8
ENT AIR TEMP-DEG F WB	77.0	77.0	77.0
TOTAL CAPACITY-TONS	567.8	567.81	567.81
FAN SECTION			
FAN UNITS-NUMBER	1	1	1
CAPACITY-CFM PER FAN (MIN)	178,600	178,600	178,600
STATIC PRESS-INCHES WG	-	-	-
HORSEPOWER-PER FAN	50	50	50
SPEED-RPM	1800	1800	1800
SPEED CONTROL	VSD	VSD	VSD
SUMP HEATER			
ELECTRIC-KW (QTY. 2)	15	15	15
VOLTS-PHASE-HERTZ	460/3/60	460/3/60	460/3/60
MAXIMUMS			
DIMENSION (LxWxH)-FEET	12x21x12	12x21x12	12x21x12
STANDARD OF ACCEPTANCE			
MAKE	MARLEY	MARLEY	MARLEY
MODEL	NC8407UAN1	NC8407UAN1	NC8407UAN1
MAX OPERATING WEIGHT-LBS	24,430	24,430	24,430
REMARKS			
[1] OPERATING RANGE FOR WATERSIDE ECONOMIZER AS FOLLOWS: ENT WATER TEMP-DEG F: 60.5, LVG WATER TEMP-DEG F: 52.5, AMBIENT TEMP-DEG F WB: 45.7			

HEAT EXCHANGERS		
EQUIPMENT NUMBER	(E)HX-1	HX-2
SYSTEM	CHILLED WATER	CHILLED WATER
LOCATION	MECHANICAL ROOM	MECHANICAL ROOM
TYPE	PLATE AND FRAME	PLATE AND FRAME
HIGH TEMPERATURE SIDE		
FLUID	WATER	WATER
FLOW-GPM	590	590
EWT TEMP-DEG F	78.5	78.5
LWT TEMP-DEG F	55	55
MAX PD-PSIG	1.29	1.29
MIN SURFACE AREA - SQ. FT.	1791.4	1408.2
COLD TEMPERATURE SIDE		
FLUID	WATER	WATER
FLOW-GPM	1725	1725
EWT TEMP-DEG F	52.5	52.5
LWT TEMP-DEG F	60.5	60.5
MAX PD-PSIG	9.79	9.79
MIN SURFACE AREA - SQ. FT.	1791.4	1408.2
PERFORMANCE CONDITIONS		
TOTAL CAPACITY - MBH	6,922	6,922
DESIGN BASIS		
MAKE	ALFA LAVAL	ALFA LAVAL
MODEL	AQ8-P	AQ8-P
MAX OPERATING WEIGHT-LBS	6,110	6,110

EXPANSION TANK	
EQUIPMENT NUMBER	(E)ET-1
SYSTEM	CHILLED WATER
UNIT LOCATION	MECHANICAL ROOM
TANK CONDITIONS	
CAPACITY-GALLONS	44
ACCEPTANCE-GALLONS	27
CHARGE-PSIG	12.0
CONFIGURATION	
RATING	ASME
TANK SIZE	
MAX DIAMETER-INCHES	24
MAX LENGTH-INCHES	82.5
DESIGN BASIS	
MAKE	B&G
MODEL	B-165LA
MAX OPERATING WEIGHT-LBS	503
REMARKS	
[1]	

SOLIDS SEPARATOR SCHEDULE	
MARK NO	SS-1
TYPE	CENTRIFUGAL
SYSTEM	CONDENSER WATER
LOCATION	MECHANICAL ROOM
SERVICE CONDITIONS	
FLOW GPM	810
PUMP CONDITIONS	
MOTOR BRAKE HORSEPOWER	7.5
VOLTS-PHASE-HERTZ	460-3-60
SPEED CONTROL	CONSTANT
STANDARD OF ACCEPTANCE	
MAKE	LAKOS
MODEL	ETCX-0910-SRV
MAX OPERATING WEIGHT-LBS	2250
REMARKS	
[1] FURNISH W/ SOLIDS RECOVERY VESSEL, BACNET INTERFACE, & ALARM CONTACTS	
[2] PUMP SELECTION PROVIDED BY VENDOR	

PUMPS								
EQUIPMENT NUMBER	(E)CHP-1 [1]	(E)CHP-2 [1]	CHP-3 [1]	(E)CWP-1	(E)CWP-2	CWP-3	CP-1, CP-2	(E)CWTP-1
SYSTEM	CHILLED WATER	CHILLED WATER	CHILLED WATER	CHILLED WATER	CHILLED WATER	CHILLED WATER	CONDENSATE	CONDENSER WATER
LOOP SERVED	PRIMARY	PRIMARY	PRIMARY	CONDENSER	CONDENSER	CONDENSER	-	TREATMENT CONDENSER
LOCATION	MECHANICAL ROOM	MECHANICAL ROOM	MECHANICAL ROOM	MECHANICAL YARD	MECHANICAL YARD	MECHANICAL YARD	MECHANICAL ROOM 105	MECHANICAL ROOM 105
TYPE	END SUCTION	END SUCTION	END SUCTION	END SUCTION	END SUCTION	END SUCTION	END SUCTION	END SUCTION
SERVICE CONDITIONS								
CAPACITY-GPM	593	593	593	1725	1725	1725	20	54
TOTAL HEAD-FT	92	92	92	103	103	103	15	20
FLUID	WATER	WATER	WATER	WATER	WATER	WATER	WATER	WATER
TEMPERATURE-DEG F	68	68	68	68	68	68	68	68
NPSH REQUIRED-FT MIN	7.6	7.6	7.6	12.1	12.1	12.1	-	-
PUMP CONDITIONS								
SPEED-RPM	1737	1737	1737	1757	1757	1757	1550	-
IMPELLER DIA-INCHES	10.375	10.375	10.375	11.25	11.25	11.25	-	-
BRAKE HORSEPOWER	17.1	17.1	17.1	53.8	53.8	53.8	-	420 WATTS
MINIMUM EFFICIENCY-%	72	72	72	82	82	82	-	-
ELECTRICAL								
MOTOR ENCLOSURE TYPE	ODP	ODP	ODP	ODP	ODP	ODP	ODP	ODP
HORSEPOWER-MINIMUM	20.0	20.0	20.0	60	60	60	3/10	1/2
VOLTS-PHASE-HERTZ	460-3-60	460-3-60	460-3-60	460-3-60	460-3-60	460-3-60	115-1-60	115-1-60
SPEED CONTROL	VARIABLE	VARIABLE	VARIABLE	VARIABLE	VARIABLE	VARIABLE	CONSTANT	VARIABLE
STANDARD OF ACCEPTANCE								
MAKE	B&G	B&G	B&G	B&G	B&G	B&G	ZOELLER	GRUNDFOS
MODEL	e-1510 4EB	e-1510 4EB	e-1510 4EB	e-1510 6G	e-1510 6G	e-1510 6G	MIGHTY-MATE 59	GEO-FLO MAGNA3
MAX OPERATING WEIGHT-LBS	600	600	600	1410	1410	1410	15	68
REMARKS								
[1] PROVIDE WITH INERTIA BASE.								

BUFFER TANK	
EQUIPMENT NUMBER	BT-1
SYSTEM	CHILLED WATER
LOCATION	MECHANICAL ROOM
TYPE	
MATERIAL	STEEL
CAPACITY	
VOLUME-GALLONS	1040
OPERATING CONDITIONS	
FLUID	WATER
TEMPERATURE-DEG F	55
DIMENSIONS-INCHES	
DIAMETER	54
LENGTH	62
HEIGHT	110
CODE STAMP	
ASME	YES
REMARKS	
[1] TWO 12-INCH CHILLED WATER CONNECTIONS	

AIR SEPERATOR	
EQUIPMENT NUMBER	(E)AS-1
SYSTEM	CHILLED WATER
LOCATION	MECHANICAL ROOM
TYPE	CENTRIFUGAL
SERVICE CONDITIONS	
DESIGN PRESSURE PSIG	125
FLOW GPM	1,180
MAX PD-FT HD	0.6
CONNECTION SIZE, IN.	
DIA.	10
STANDARD OF ACCEPTANCE	
MAKE	B&G
MODEL	RL-10
MAX OPERATING WEIGHT-LBS	2052

DATA CENTER DESIGN MLC CALCULATION		
DESIGN MECHANICAL ENERGY CONSUMPTION - 100%	EACH	TOTAL
[1] COOLING DESIGN POWER (KW)	261.63	523.27
HEAT REJECTION PEAK FAN POWER (KW)	37.29	74.57
[2] AIR HANDLER UNIT FAN DESIGN POWER (KW)	0.18	25.67
TOTAL	299.10	623.50
DATA CENTER DESIGN ITE POWER - 100%		
IT LOAD (KW)	4000	4000
DESIGN MLC @ 100%		
MECHANICAL LOAD / IT LOAD	0.22	0.16
DESIGN MECHANICAL ENERGY CONSUMPTION - 50%		
[1] COOLING DESIGN POWER (KW) +	59.81	119.62
HEAT REJECTION PEAK FAN POWER (KW) +	6.25	12.50
[2] AIR HANDLER UNIT FAN DESIGN POWER (KW)	0.02	3.08
TOTAL	66.08	135.20
DATA CENTER DESIGN ITE POWER - 50%		
IT LOAD (KW)	2000	2000
DESIGN MLC @ 50%		
MECHANICAL LOAD / IT LOAD	0.18	0.07
REMARKS		
[1] COOLING DESIGN POWER INCLUDES CHILLERS, PRIMARY PUMPS, AND CONDENSER WATER PUMPS.		
[2] SERVER RACK COOLING COIL FAN POWER		

REVISION	BY

929 108th Ave NE
Suite 1000
Bellevue WA 98004
425.626.6000
woodharbinger.com




PRMH20240593

City of Puyallup
Development & Permitting Services
ISSUED PERMIT

Building Planning
Engineering Public Works
Fire Traffic

centeris
Centers for Information Systems

CENTERIS DATA CENTERS
DATA CENTER EXPANSION 2023
1028 39TH AVENUE SE, PUYALLUP, WA 98674

SHEET TITLE
MECHANICAL EQUIPMENT SCHEDULES

DATE	2/27/24
SCALE	NONE
ENGR	TJB
DRWN	TJB
CHKD	PMG
APPR	NRB
JOB	23025.00

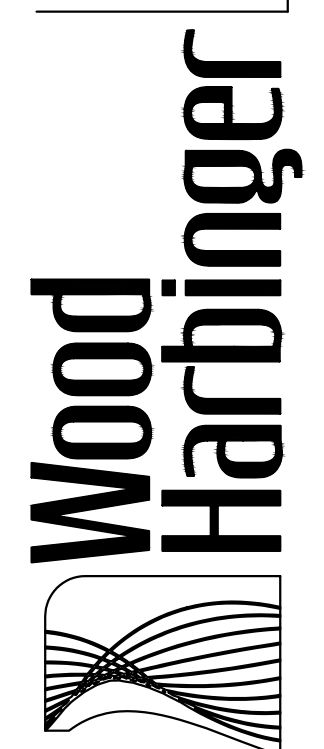
M-0.02
SHEET 2 OF 8

ISSUE FOR CONSTRUCTION 2-27-24

IF SHEET IS LESS THAN 30"x42"
IT IS A REDUCED PRINT
SCALE REDUCED ACCORDINGLY

REVISION	BY
1 - 05/04/18	BJH

929 108th Ave. NE
Suite 1000
Bellevue, WA 98004
425.626.6000
woodharbinger.com



PRMH20240593

City of Puyallup Development & Permitting Services ISSUED PERMIT	
Building	Planning
Engineering	Public Works
Fire	Traffic



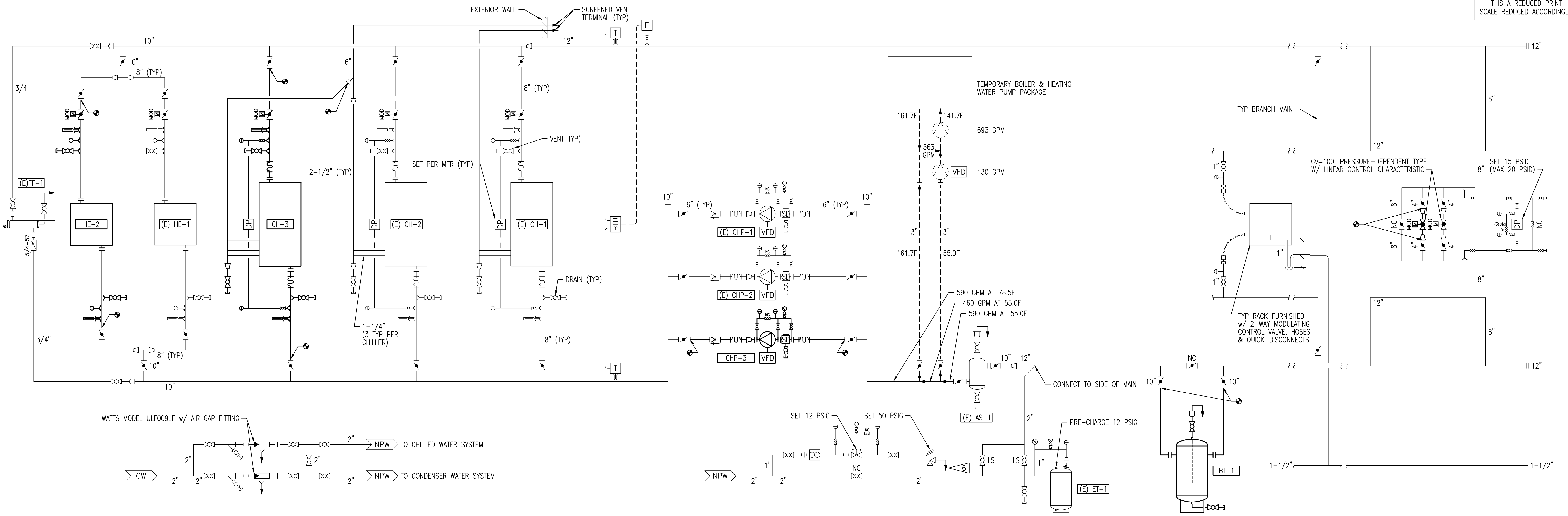
**CENTERIS DATA CENTERS
DATA CENTER EXPANSION 2023**
1028 39TH AVENUE SE, PUYALLUP, WA 98674

ISSUE FOR CONSTRUCTION 2-27-24

SHEET TITLE
**PIPING AND INSTRUMENT
DIAGRAMS**

DATE	2/27/24
SCALE	NONE
ENGR	TJB
DRWN	TJB
CHKD	PMG
APPR	NRB
JOB	23025.00

M-0.03
SHEET 3 OF 8

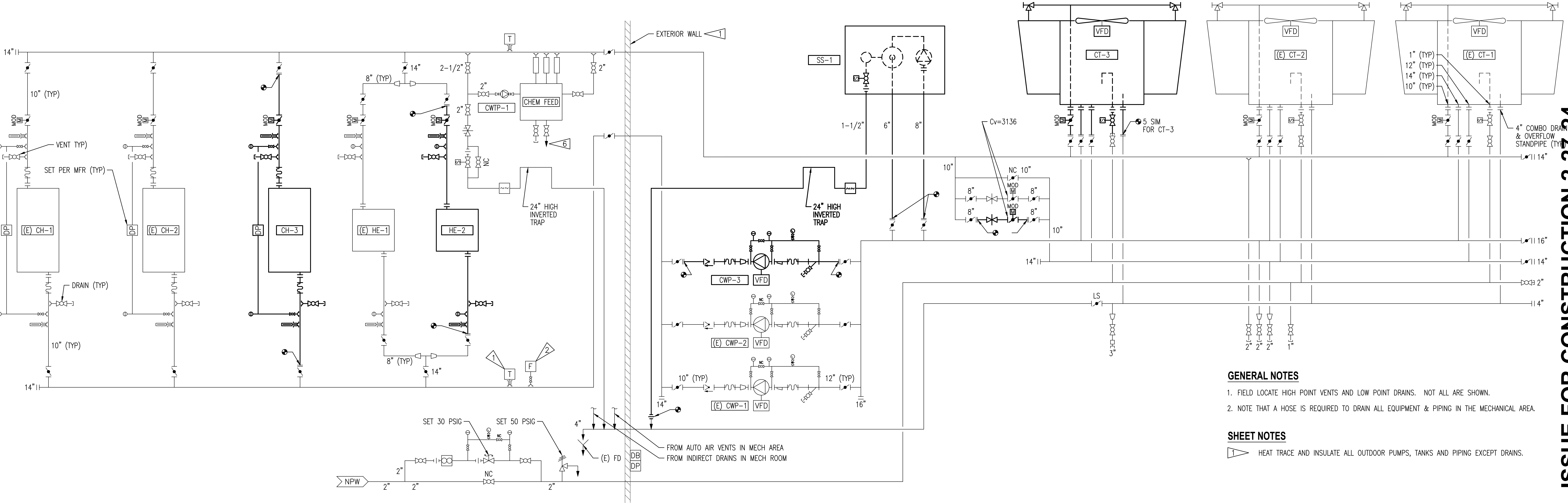


COLD WATER PIPING & INSTRUMENT DIAGRAM

1

CHILLED WATER PIPING & INSTRUMENT DIAGRAM

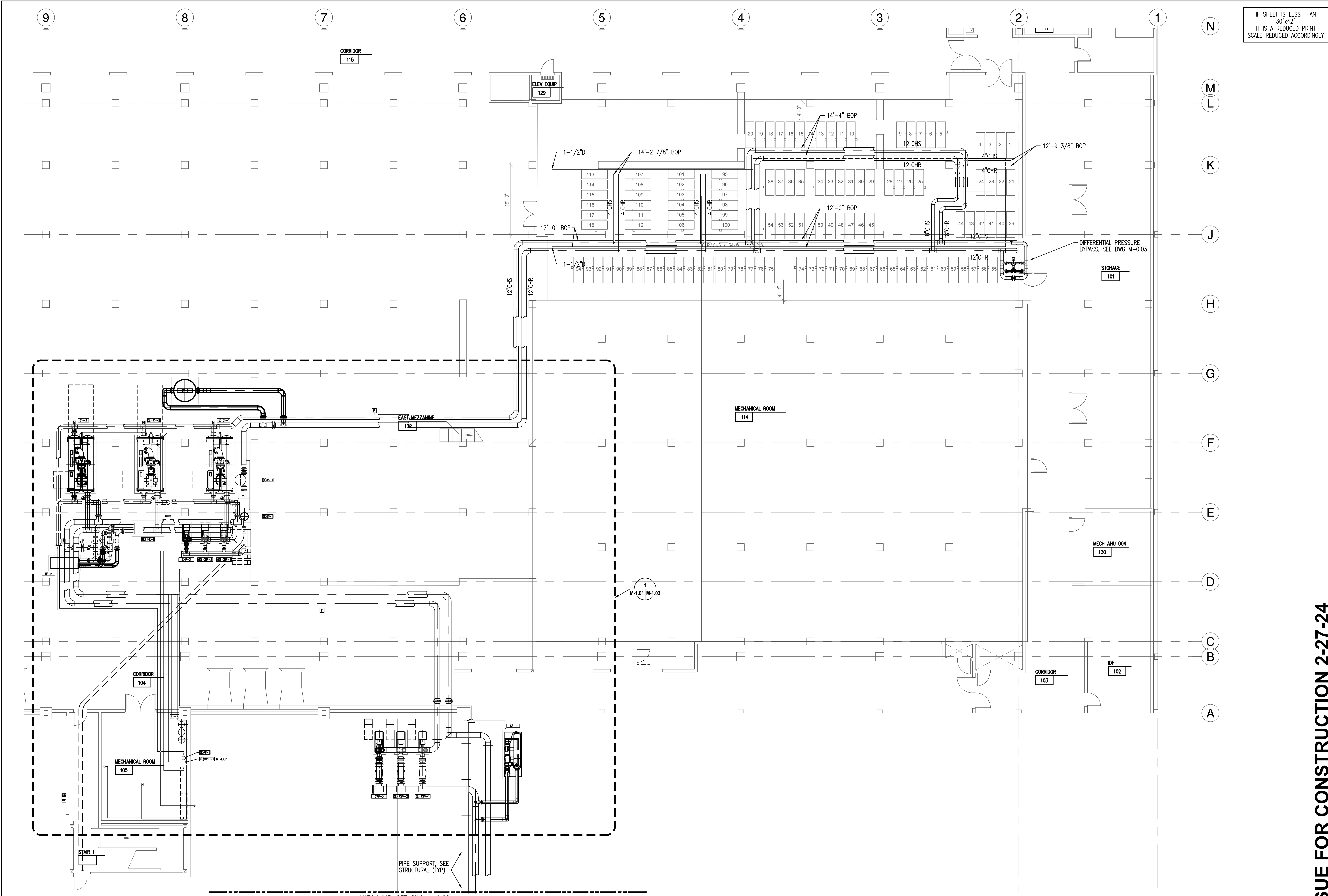
2



CONDENSER WATER PIPING & INSTRUMENT DIAGRAM

3

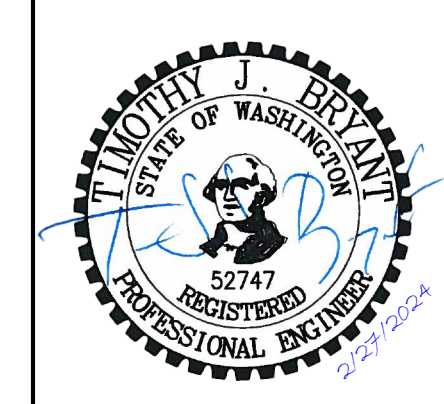
- GENERAL NOTES**
- FIELD LOCATE HIGH POINT VENTS AND LOW POINT DRAINS. NOT ALL ARE SHOWN.
 - NOTE THAT A HOSE IS REQUIRED TO DRAIN ALL EQUIPMENT & PIPING IN THE MECHANICAL AREA.
- SHEET NOTES**
- HEAT TRACE AND INSULATE ALL OUTDOOR PUMPS, TANKS AND PIPING EXCEPT DRAINS.



IF SHEET IS LESS THAN 30"x42" IT IS A REDUCED PRINT SCALE REDUCED ACCORDINGLY

REVISION	BY

929 108th Ave. NE
Suite 1000
Bellevue, WA 98004
425.628.6000
woodharbinger.com



PRMH20240593

City of Puyallup
Development & Permitting Services
ISSUED PERMIT

Building	Planning
Engineering	Public Works
Fire	Traffic

Centers for Information Systems

**CENTERIS DATA CENTERS
DATA CENTER EXPANSION 2023**
1028 39TH AVENUE SE, PUYALLUP, WA 98674

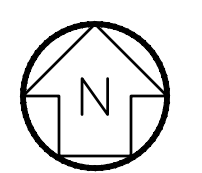
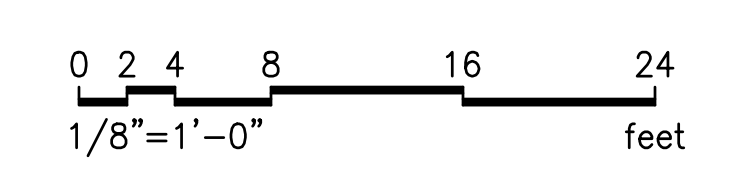
SHEET TITLE
FIRST FLOOR PIPING PLAN

DATE	2/27/24
SCALE	1/8" = 1'-0"
ENGR	TJB
DRWN	TJB
CHKD	PMG
APPR	NRB
JOB	23025.00

M-101
SHEET 5 OF 8

ISSUE FOR CONSTRUCTION 2-27-24

FIRST FLOOR PIPING PLAN
SCALE: 1/8" = 1'-0"



MATCHLINE, SEE DWG M-1.02

PIPE SUPPORT, SEE STRUCTURAL (TYP)

STAIR 1

MECHANICAL ROOM 105

CORRIDOR 104

MECHANICAL ROOM 114

EAST MEZZANINE 130

MECH AHU 004 130

CORRIDOR 103

IDF 102

STORAGE 101

DIFFERENTIAL PRESSURE BYPASS, SEE DWG M-0.03

ELEV EQUIP 129

CORRIDOR 115

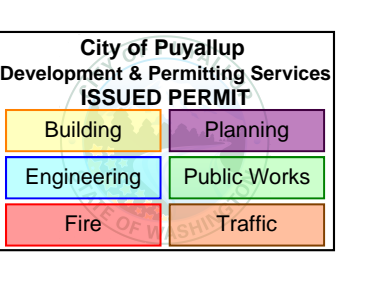
IF SHEET IS LESS THAN
30"x42"
IT IS A REDUCED PRINT
SCALE REDUCED ACCORDINGLY

REVISION	BY

929 108th Ave NE,
Suite 1000
Bellevue WA 98004
425.628.6000
woodharbinger.com



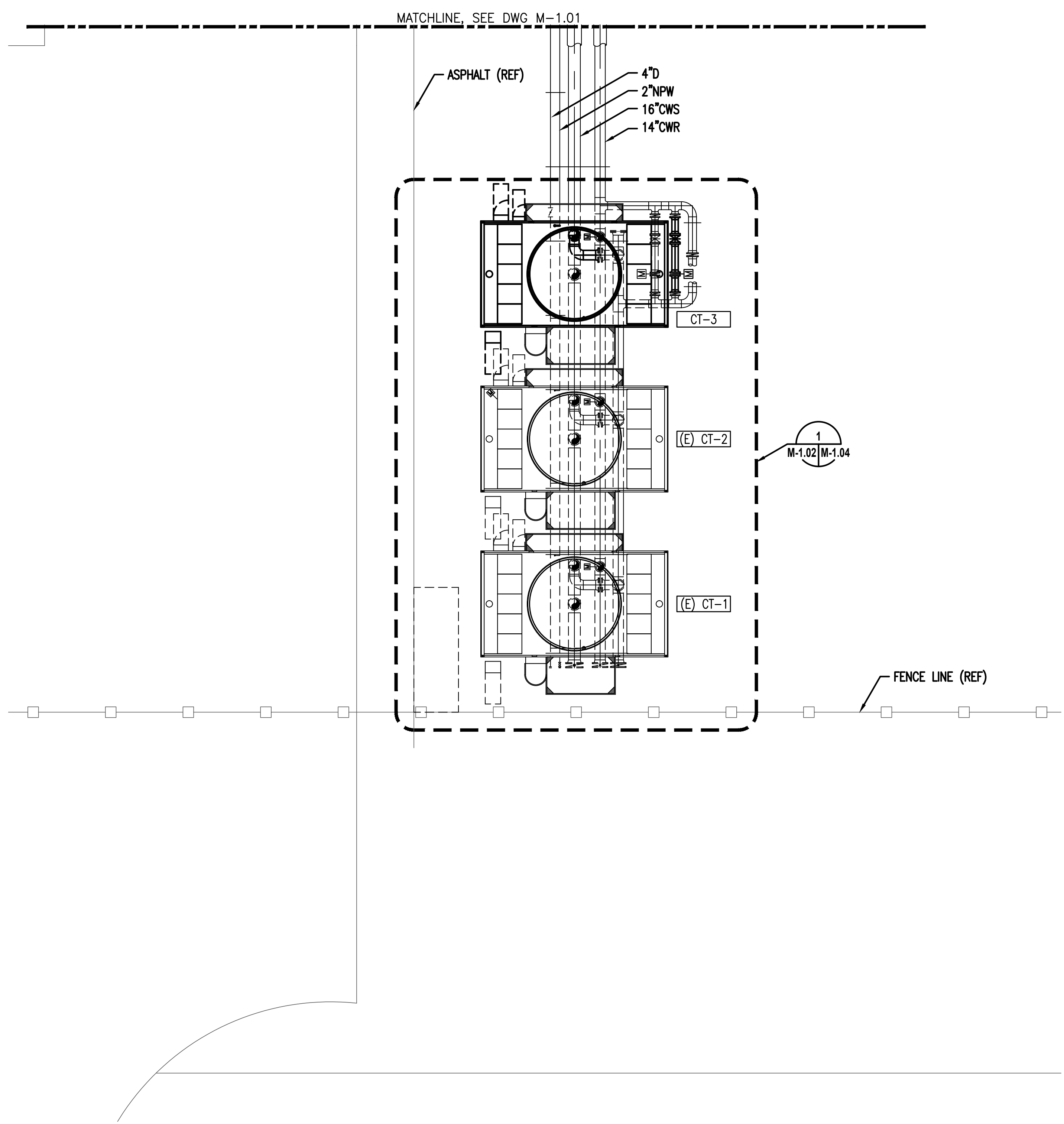
PRMH20240593



CENTERIS DATA CENTERS
DATA CENTER EXPANSION 2023
1028 39TH AVENUE SE, PUYALLUP, WA 98674
SHEET TITLE
COOLING TOWER AREA PLAN

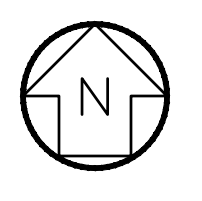
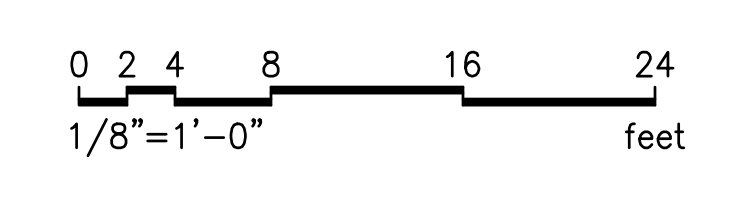
DATE	2/27/24
SCALE	1/8" = 1'-0"
ENGR	TJB
DRWN	TJB
CHKD	PMG
APPR	NRB
JOB	23025.00

M-1.02
SHEET 6 OF 8

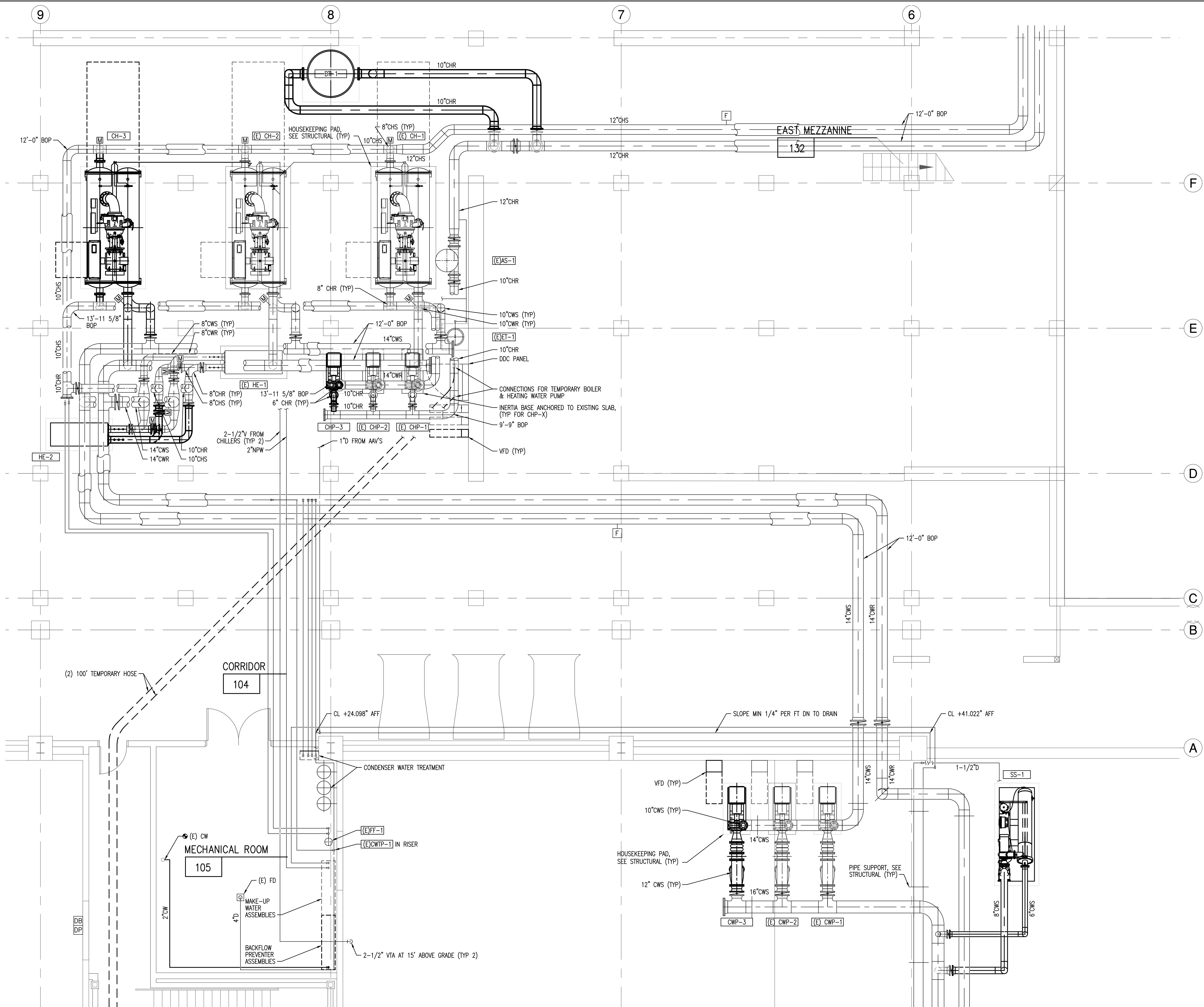


 **COOLING TOWER AREA PLAN**
SCALE: 1/8" = 1'-0"

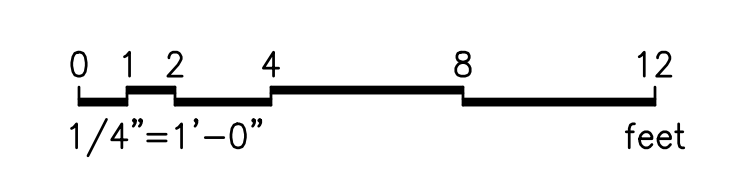
ISSUE FOR CONSTRUCTION 2-27-24



IF SHEET IS LESS THAN
30"x42"
IT IS A REDUCED PRINT
SCALE REDUCED ACCORDINGLY



MECHANICAL AREA ENLARGED PLAN
SCALE: 1/4" = 1'-0"

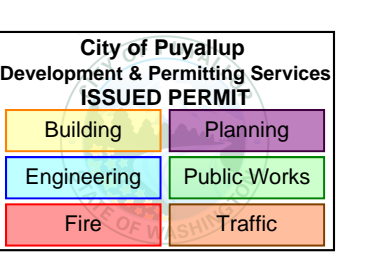


REVISION	BY

929 108th Ave NE
Suite 1000
Bellevue WA 98004
425.628.6000
woodharbinger.com



PRMH20240593



ISSUE FOR CONSTRUCTION 2-27-24

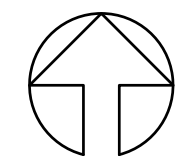
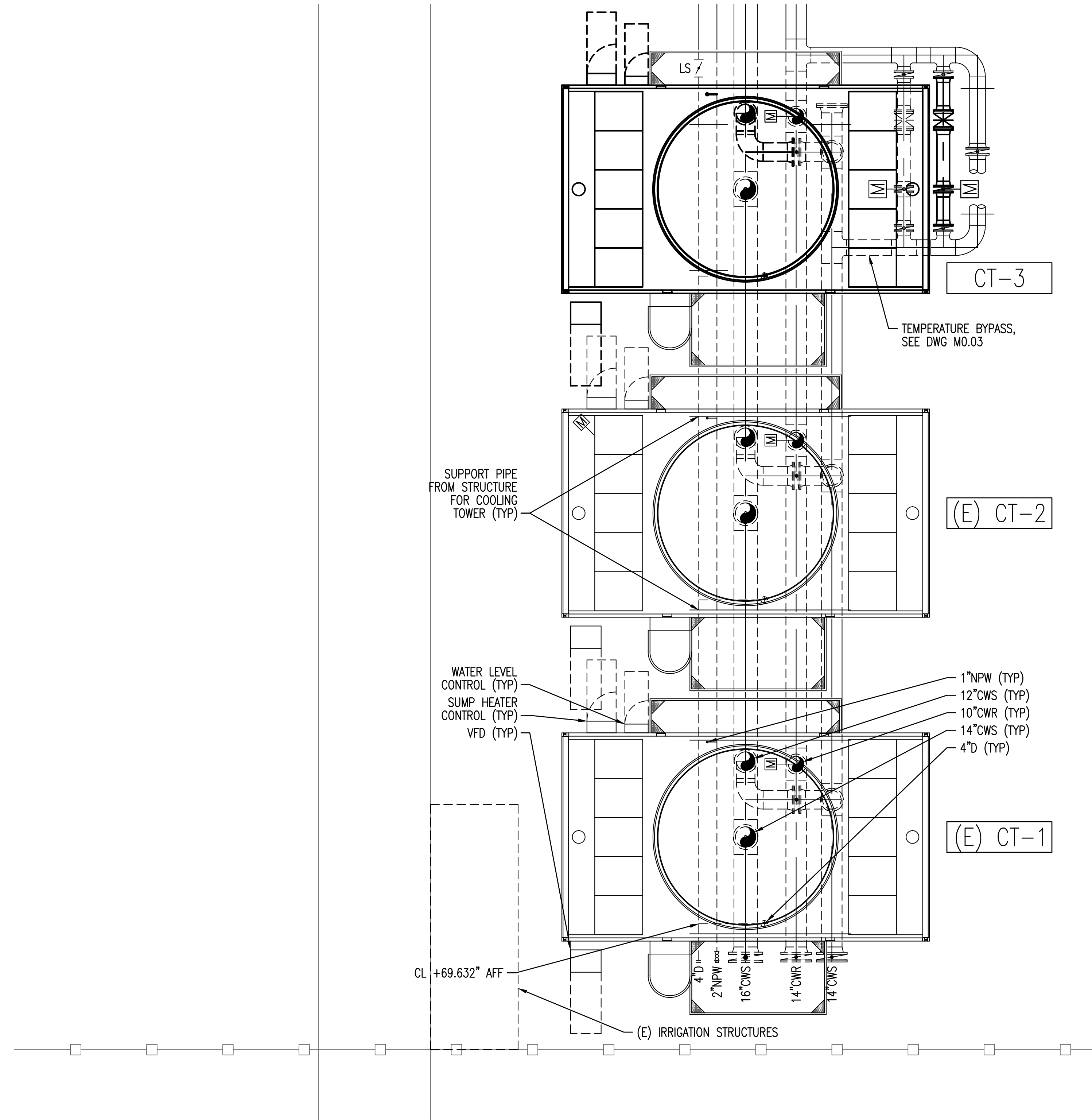
**CENTERIS DATA CENTERS
DATA CENTER EXPANSION 2023**
1028 30TH AVENUE SE, PUYALLUP, WA 98674

SHEET TITLE
ENLARGED PLAN

DATE	2/27/24
SCALE	1/4" = 1'-0"
ENGR	TJB
DRWN	TJB
CHKD	PMG
APPR	NRB
JOB	23025.00

M-103
SHEET 7 OF 8

IF SHEET IS LESS THAN
30"x42"
IT IS A REDUCED PRINT
SCALE REDUCED ACCORDINGLY



COOLING TOWER AREA ENLARGED PLAN

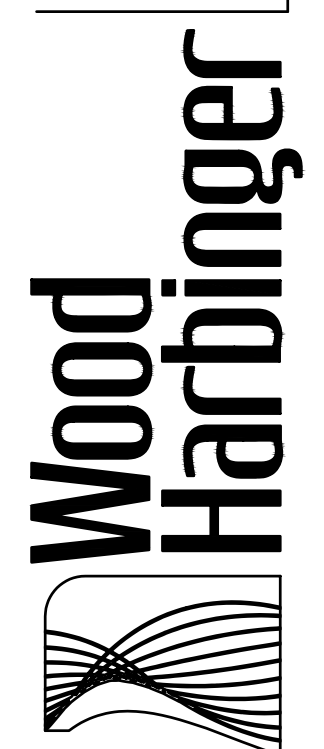
SCALE: 1/4" = 1'-0"

M-1.01 | M-1.04

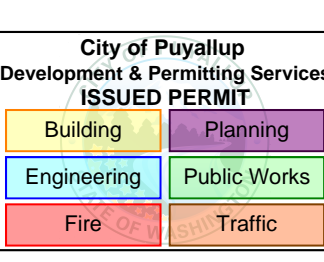
0 1 2 4 8 12
1/4"=1'-0" feet

REVISION	BY

929 108th Ave NE,
Suite 1000
Bellevue WA 98004
425.628.6000
woodharbinger.com



PRMH20240593



ISSUE FOR CONSTRUCTION 2-27-24

**CENTERIS DATA CENTERS
DATA CENTER EXPANSION 2023**
1028 39TH AVENUE SE, PUYALLUP, WA 98674

SHEET TITLE
ENLARGED PLAN

DATE	2/27/24
SCALE	1/4" = 1'-0"
ENGR	TJB
DRWN	TJB
CHKD	PMG
APPR	NRB
JOB	23025.00

M-1.04

SHEET 8 OF 8