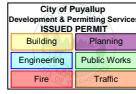


PRMH20240593

FULL SIZED LEDGIBLE REPORT IS REQUIRED TO BE PROVIDED BY THE PERMITTEE ON SITE FOR ALL INSPECTIONS



YK CHILLER PERFORMANCE SPECIFICATION

Unit Tag	Qty	Model No.	Net Capacity (tons)	Power	Refrigerant
CH-3	1	YKE3ELQ7-EKHS	575.0	460/3/60.0	R-513A

Basic Model		Extended Model		Evaporator Heat Exchanger	Condenser Heat Exchanger		
Y K E 3 E L Q 7 - E K H S W L M N F 3 V V B 0 5 7 5 3 5 9 2 1 2 C B A R Y 1 C R G X X W 0 0 X 4 1 C R G X X W							
5 10 15 20 25 30 35 40 45 50 55							
Condenser Heat Exchanger (Cont)	Unit Options	Motor Options	Power Options	Doc & Testing Options	Ship Options	Warranty Options	Misc Options
0 0 X X X X X A 3 X A U X X X X X S M X Y X X X B X A U X J X X X X X X X B X X B X A X X S X X X X X							
60 65 70 75 80 85 90 95 100 105 110							

Unit Data	Evaporator	Condenser
EWT (°F):	78.50	75.00
LWT (°F):	55.00	83.77
Flow Rate (gpm):	587.7	1725
Pressure Drop (ft H2O):	14.8	14.6
Fluid Type (%):	WATER	WATER
Circuit No. of Passes:	3	2
Fouling Factor (ft ² °F hr / Btu):	0.000100	0.000250
Tube No. / Description:	656 - 0.025" Enhanced Copper (1")	471 - 0.025" Enhanced Copper (3/4")
Design Working Pressure (psig):	150	150
Entering Water Nozzle @ Location:	R	R
Leaving Water Nozzle @ Location:	L	R
Water Box Weight, ea (lb) :	152	280
Cover Plate Weight , ea (lb):	N/A	N/A
Return Head Weight (lb):	N/A	96
Water Weight (lb):	723	1234
Water Volume(gal):	87	148

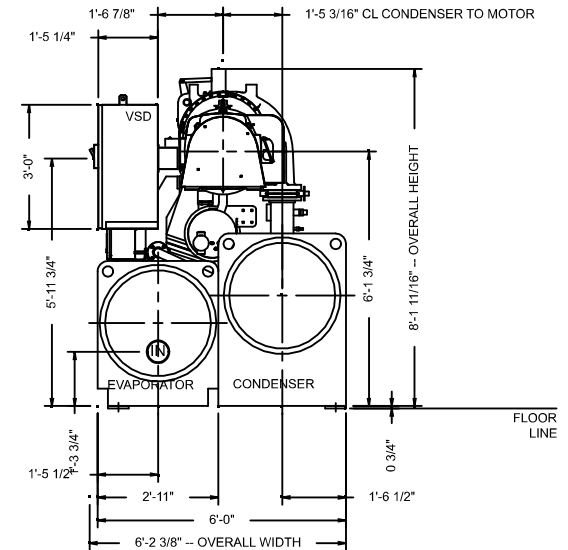
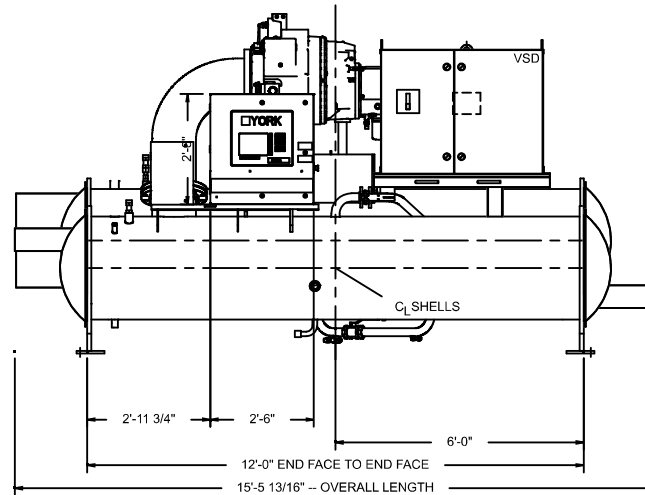
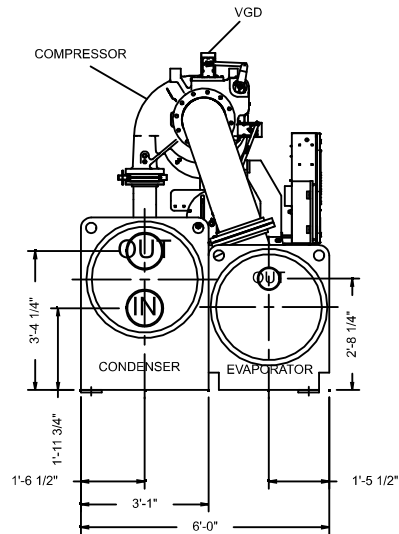
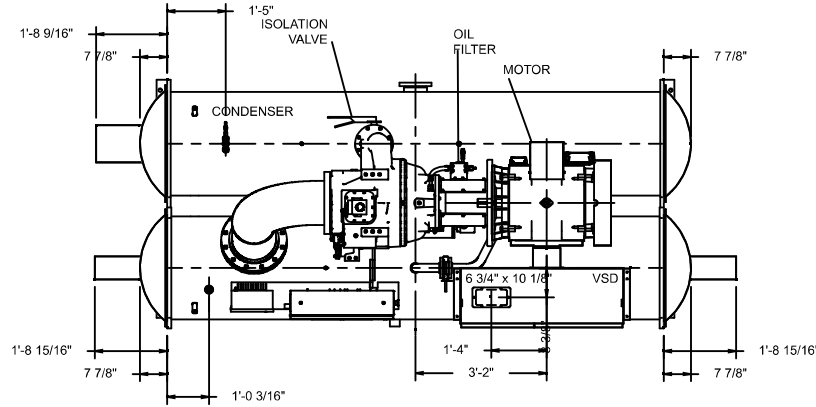
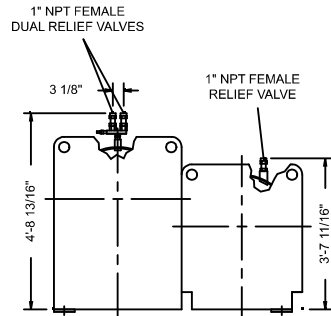
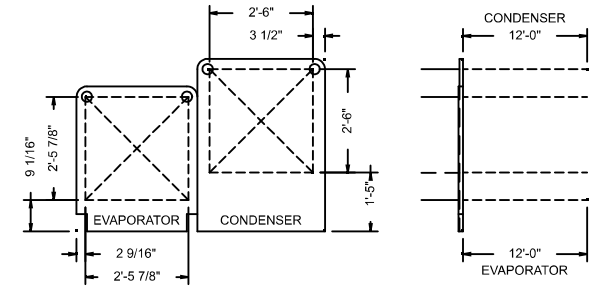
Performance Data		Electrical Data		Other	
Job KW:	206.6	Job FLA:	265	Operating Wt. (lb):	19539
Motor KW:	199.6	Motor FLA:	288	Per Isolator (lb):	4885
KW/Ton.R:	0.3594	LRA:	1950	Refrigerant Wt. (lb):	1007
NPLV.IP(KW/Ton.R):	0.2121			Oil Charge (gal):	11
Gear Code:	WL	Min Circuit Ampacity (Amps):	331	Motor Wt. (lb):	1653
OptiSound Cntrl:	YES	Max Fuse/Breaker:	500	Compressor Wt. (lb):	1889
Shaft HP:	254			Starter Wt. (lb):	780
Isolation Valves:	YES			Ship Wt (lb):	17582
Oil Cooler Type:	Standard				
Condenser Inlet:	Standard				
Heat Rejection Capacity(mbtu/hr):	7.547	Type Starter: VSD w/ IEEE filter			

NOZZLE LEGEND

EVAPORATOR INLET	RIGHT SIDE	3 PASSES	6 DIA.	(150 Psig DWP)
EVAPORATOR OUTLET	LEFT SIDE	3 PASSES	6 DIA.	(150 Psig DWP)
CONDENSER INLET	LEFT SIDE	2 PASSES	10 DIA.	(150 Psig DWP)
CONDENSER OUTLET	LEFT SIDE	2 PASSES	10 DIA.	(150 Psig DWP)

Victaulic Grooved Nozzles (per ANSI / AWWA C-606)

TUBE PULL AREA DETAIL



SHIPPING WT.: 17,582 LBS, OPERATING WT. 19,539 LBS, LOAD PER ISOLATOR 4,885 LBS

PRODUCT DRAWING

MaxE Centrifugal Liquid Chiller
 MODEL: YK E3 EL Q7 _ EK H
 NOT FOR CONSTRUCTION

Project Name: Centeris Ph. 2
 Location:
 Engineer:
 Contractor:
 For:

Sold To:
 Cust Purch Order#:
 Contract#:
 UNIT TAG: CH-3

Date: October 06, 2023
 Rev. Date: October 06, 2023
 Form No.: 160.76-EG1
 Dwg. Lev.: 1215
 Dwg. Scale: NTS

