

PUYALLUP DUPLEX
A PORTION OF THE NW 1/4 OF THE NW 1/4 OF SEC. 34, TWP. 20 N., RGE. 4 E.,
WILLAMETTE MERIDIAN, CITY OF PUYALLUP, PIERCE COUNTY, WASHINGTON

Add project name/legal description
to top of the lighting plan sheet.
[lighting, sheet 1]

ELECTRICAL LEGEND	
SYMBOL	DESCRIPTION
	STREET LIGHT POLE FIXTURE (ARROW INDICATES DIRECTION OF AIMING FOR OPTICS). SEE STREET LIGHT POLE DETAILS ON SHEETS E1.2 & E1.3.
	CONDUIT STUB OUT (PROVIDE CONCRETE MARKER ON EXTERIOR)
	DEDICATED CONDUIT HOMERUN TO PANEL & CIRCUIT NUMBERS AS INDICATED ON PLANS
	RACEWAY CONCEALED IN WALL OR CEILING
	RACEWAY CONCEALED UNDERGROUND OR UNDER FLOOR SLAB
	MARKS INDICATE NUMBER OF #12 AWG UNLESS NOTED OTHERWISE
	GROUNDING CONDUCTOR
	CONSTRUCTION NOTES
	HANDHOLE
	STREET LIGHTING SERVICE CABINET

LIGHTING FIXTURE SCHEDULE			
SYMBOL	DESCRIPTION	LAMPS	VOLTS
			WATTS
	FIXTURE: LEOTEK LED GC1-40E-MV-NW-2-530	LED 7,200 LUMENS	120-277V 67W
NOTE: 1. FIXTURE HEADS ARE MOUNTED AT 30' AFG. 2. FIXTURES AS SPECIFIED ARE A TYPE 2 DISTRIBUTION. 3. PROVIDE WITH PHOTOCELL.			

Revise these general
notes to state City
illumination notes.
[lighting, sheet E1.1]

GENERAL NOTES

- ALL WORK SHALL BE IN ACCORDANCE WITH CITY OF PUYALLUP PUBLIC WORKS STANDARDS AND WSDOT STANDARDS AND SPECIFICATIONS.
- THE LOCATIONS OF FEATURES SHOWN ARE APPROXIMATE AND SHALL BE VERIFIED BY THE CONTRACTOR PRIOR TO CONSTRUCTION START.
- UTILITY LOCATIONS ARE APPROXIMATE AND SHALL BE VERIFIED IN THE FIELD BY THE CONTRACTOR PRIOR TO ANY ILLUMINATION WORK.
- ALL WORK SHALL BE CONSISTENT WITH UTILITY AGENCY REQUIREMENTS. THE CONTRACTOR SHALL COORDINATE WITH AFFECTED UTILITY AGENCIES THROUGHOUT THE PROJECT. THE CONTRACTOR SHALL BE RESPONSIBLE FOR ANY DAMAGE TO UTILITIES.
- CONDUIT LOCATIONS ARE SHOWN FOR ILLUSTRATIVE PURPOSES. ACTUAL LOCATIONS SHALL BE DETERMINED BY THE CONTRACTOR IN THE FIELD.
- CONTRACTOR SHALL COORDINATE WITH THE CITY SIGNAL/ILLUMINATION TECHNICIAN AT 253.405.4390 PRIOR TO CONSTRUCTION.
- THE LOCATION OF ALL CONDUITS, JUNCTION BOXES, POLES, AND CABINETS SHOWN ON THIS PLAN MAY BE ADJUSTED IN THE FIELD TO AVOID CONFLICTS AND MEET ADA REQUIREMENTS. ALL FINAL LOCATIONS SHALL BE APPROVED BY THE CITY TRAFFIC ENGINEER PRIOR TO CONSTRUCTION.
- JUNCTION BOX LOCATIONS SHOWN ARE FOR ILLUSTRATIVE PURPOSES ONLY. JUNCTION BOXES SHALL BE FIELD LOCATED BY THE CONTRACTOR WITH DIRECTION FROM THE CITY.
- CONTRACTOR SHALL ADJUST JUNCTION BOX LIDS TO BE FLUSH WITH TOP OF SIDEWALK.
- ANY NEW JUNCTION BOX WHICH WILL BE LOCATED WITHIN OR PARTIALLY WITHIN SIDEWALK SHALL HAVE LIDS AND FRAMES WITH A NON-SLIP COATING ON THE TOP SURFACE EQUAL TO MEBAC1 OR SLIPNOTH3.
- ALL CONDUIT SHALL BE INSTALLED 24" BELOW GRADE PER CITY OF PUYALLUP STANDARDS.

CONSTRUCTION NOTES

- APPROXIMATE LOCATION OF EXISTING POWER POLE WITH OVERHEAD LINES.
- PROVIDE (1) 2" PVC SCHEDULE 40 CONDUIT WITH (2) #8 CU & (1) #8 CU GND.
- PROVIDE (1) 2" PVC SCHEDULE 40 CONDUIT WITH PULLSTRING.
- PROVIDE SCHEDULE 80 CONDUIT AT ROADWAY CROSSINGS.
- PROVIDE TYPE 1 JUNCTION BOX WITH SLIP RESISTANT COATING PER CITY OF PUYALLUP STANDARDS.
- PROVIDE NEW STREET LIGHTING SERVICE CABINET PER CITY OF PUYALLUP STANDARDS. COORDINATE WITH CITY OF PUYALLUP TRAFFIC ENGINEER PRIOR TO ORDERING AND INSTALLATION.
- PROVIDE CT'S AND METERING PER PSE STANDARDS. COORDINATE WITH PSE AS REQUIRED.

Add to note 5 that a concrete
collar is 6" thick and 6" wide
completely surrounding the
junction box. [lighting, sheet E1.1]

SITE ADDRESS

409 AND 433 43RD AVE SW
PUYALLUP, WA 98373

PARCEL NUMBER

0419095003
0419095022

LEGAL DESCRIPTION

LOT 3 OF SHORT PLAT 79-557
EASE OF RECORD OUT OF 1-800
& 1-053 SEG M-1448

OWNER

HC HOMES INC.
20921 SNAG ISLAND DR.
LAKE TAPPS, WA. 98391

UTILITIES

WATER: FRUITLAND WATER
SEWER: SEPTIC
POWER: PUGET SOUND ENERGY
GAS: PUGET SOUND ENERGY
COMMUNICATIONS: COMCAST / LUMEN

Include site address and parcel numbers, owner,
legal description and utilities. [lighting, sheet 1]

APPROVED

BY _____
CITY OF PUYALLUP
ENGINEERING SERVICES

DATE _____

NOTE: THIS APPROVAL IS VOID AFTER
1 YEAR FROM APPROVAL DATE. THE
CITY WILL NOT BE RESPONSIBLE FOR
ERRORS AND/OR OMISSIONS ON THESE
PLANS. FIELD CONDITIONS MAY
DICTATE CHANGES TO THESE PLANS
AS DETERMINED BY THE ENGINEERING
SERVICE MANAGER

bce engineers, inc.
p: (253) 922-0446
f: (253) 922-0896
6021 12th street east, suite 200, fife, wa 98424



REUSE OF DOCUMENTS
THE DRAWINGS AND SPECIFICATIONS CONTAINED
HEREIN ARE THE PROPRIETARY, UNPUBLISHED
PROPERTY OF BCE ENGINEERS, INC. AND SHALL
NOT BE REPRODUCED, COPIED, OR DISCLOSED IN
WHOLE OR PART WITHOUT THE WRITTEN
PERMISSION OF BCE ENGINEERS, INC.

PUYALLUP DUPLEX
STREET LIGHTING

433 & 409 43RD AV SW
PUYALLUP, WA 98373

ELECTRICAL SITE PLAN

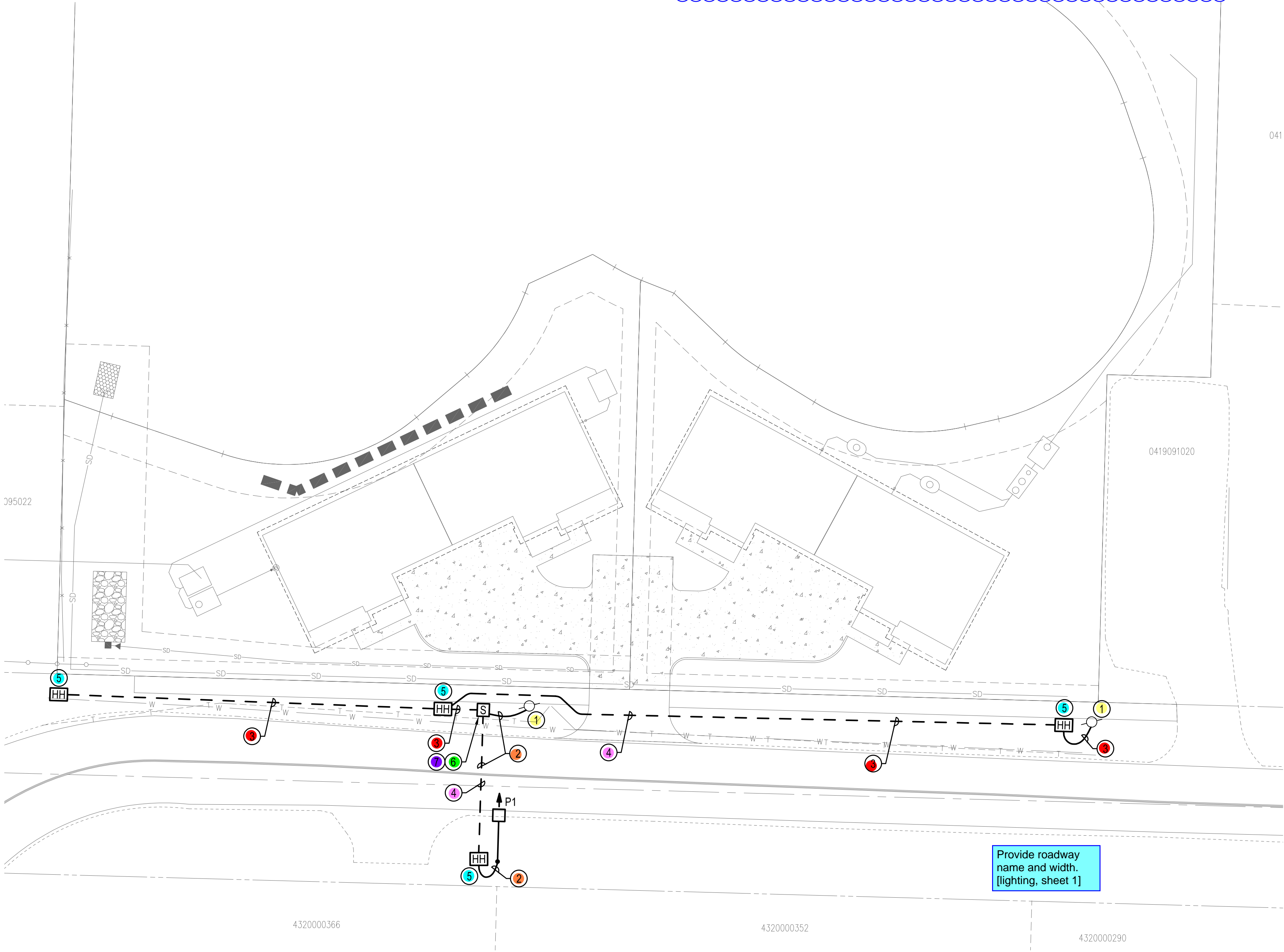
REVISIONS		
NO.	DESCRIPTION	DATE

DRAWN BY: _____ AS
CHECKED BY: _____ BH
PROJECT MANAGER: _____ AS

DRAWING No. 1 of 3 TOTAL

E1.1

DATE: 10/11/2023
SUBMITTAL: PERMIT
PROJECT No. 223-328

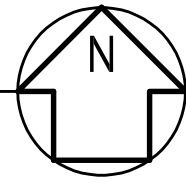


Provide roadway
name and width.
[lighting, sheet 1]

1 ELECTRICAL SITE PLAN

SCALE: 1" = 20'

20' 10' 0 20' 40'
SCALE: 1" = 20'-0"



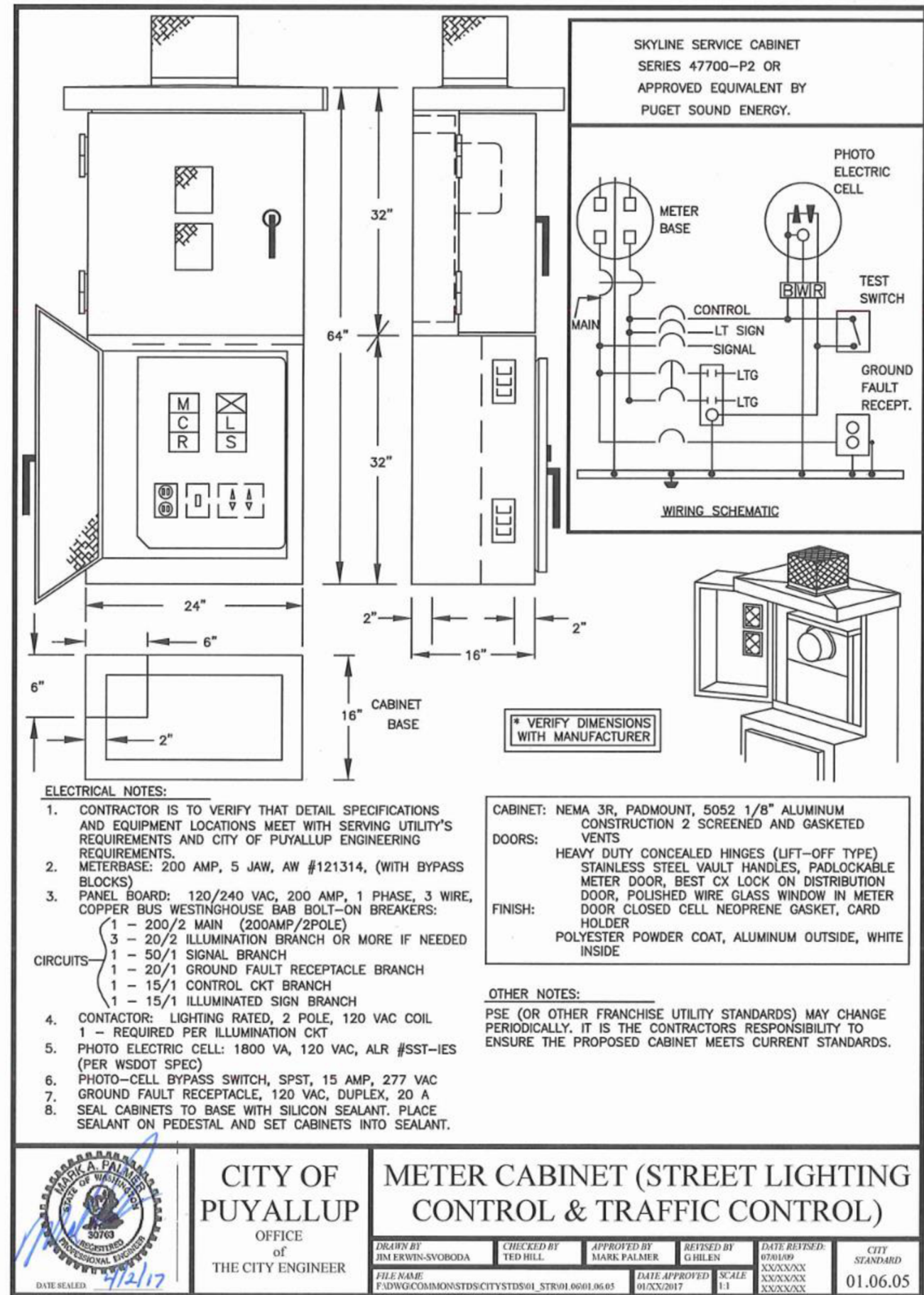
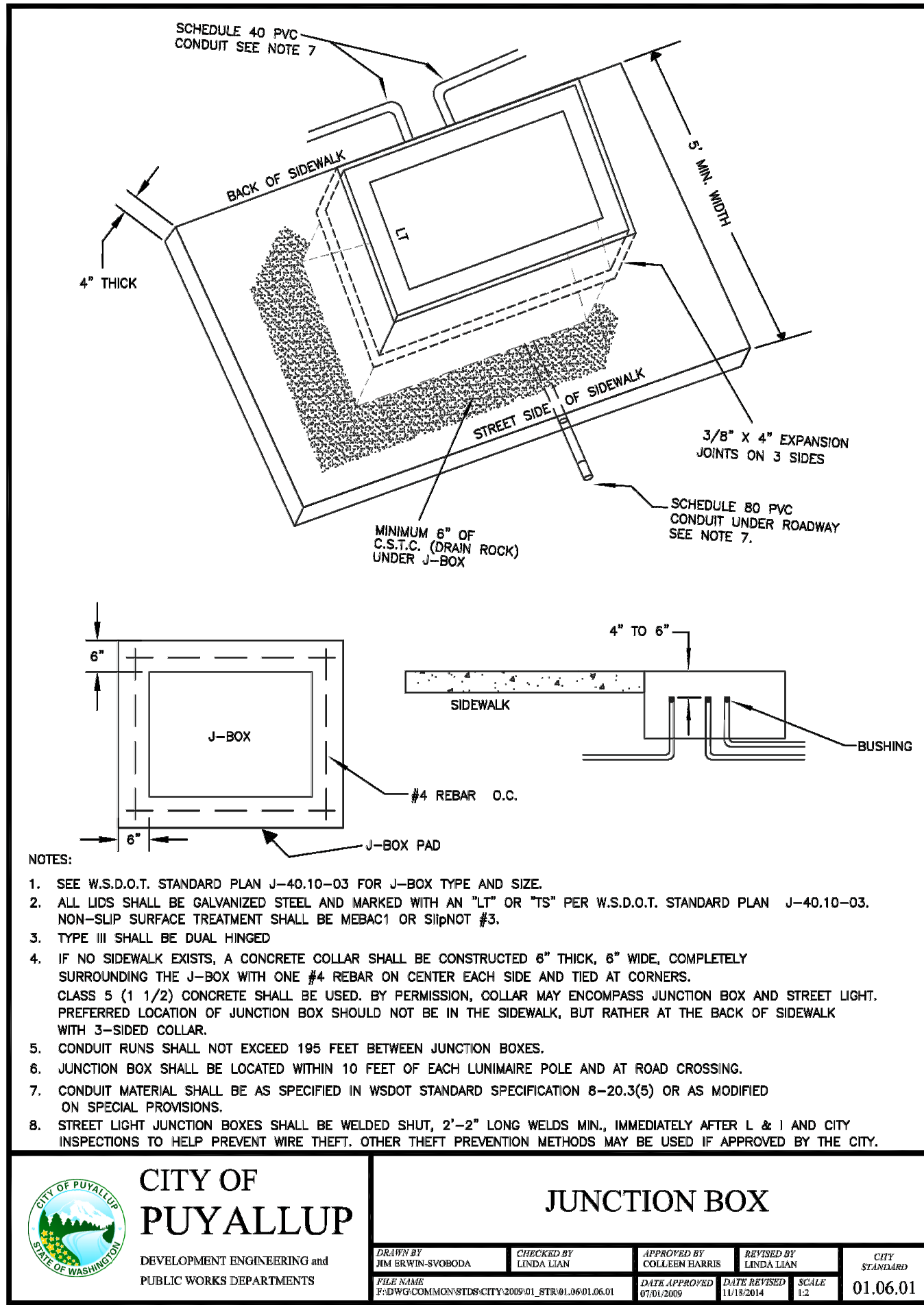
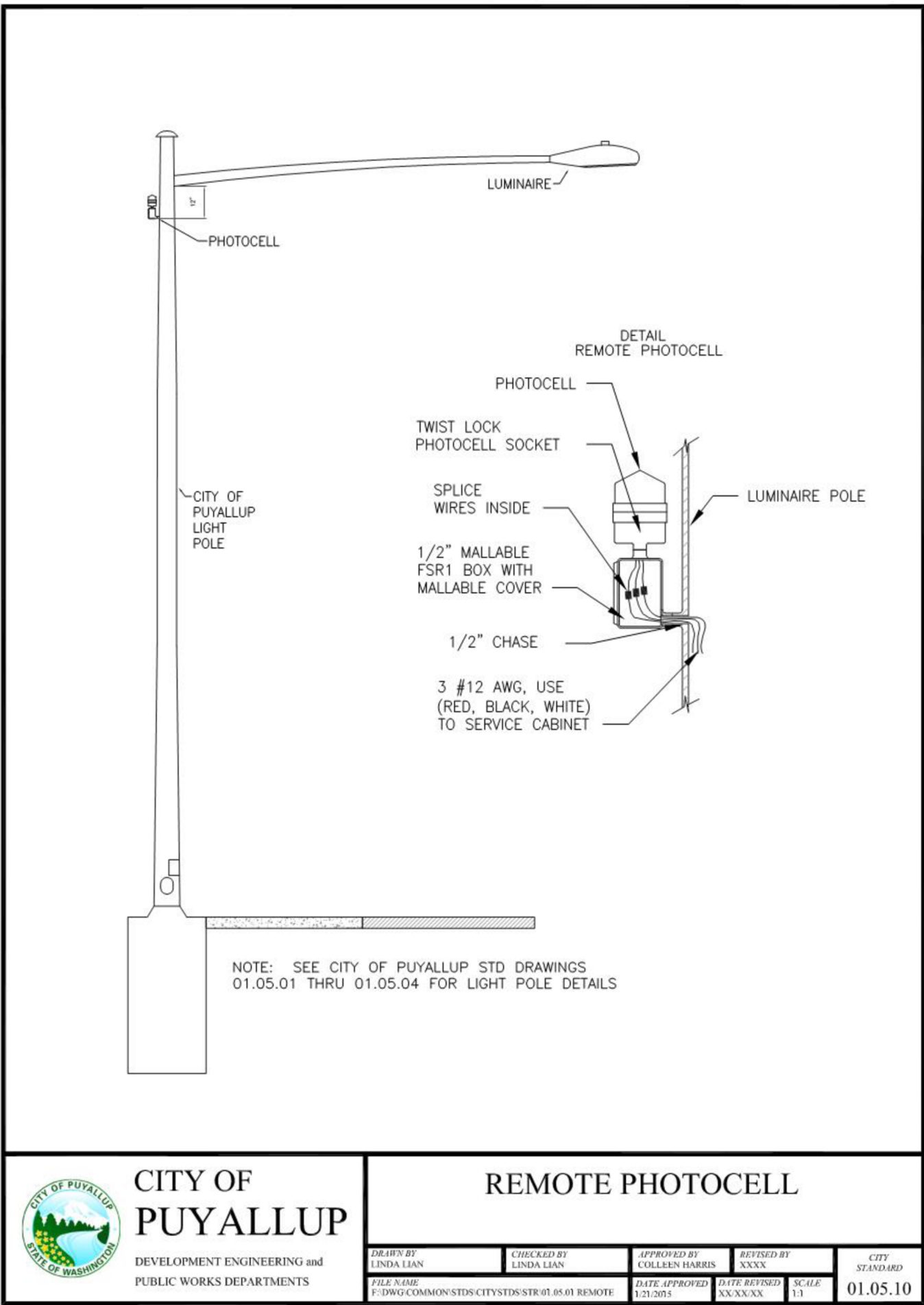
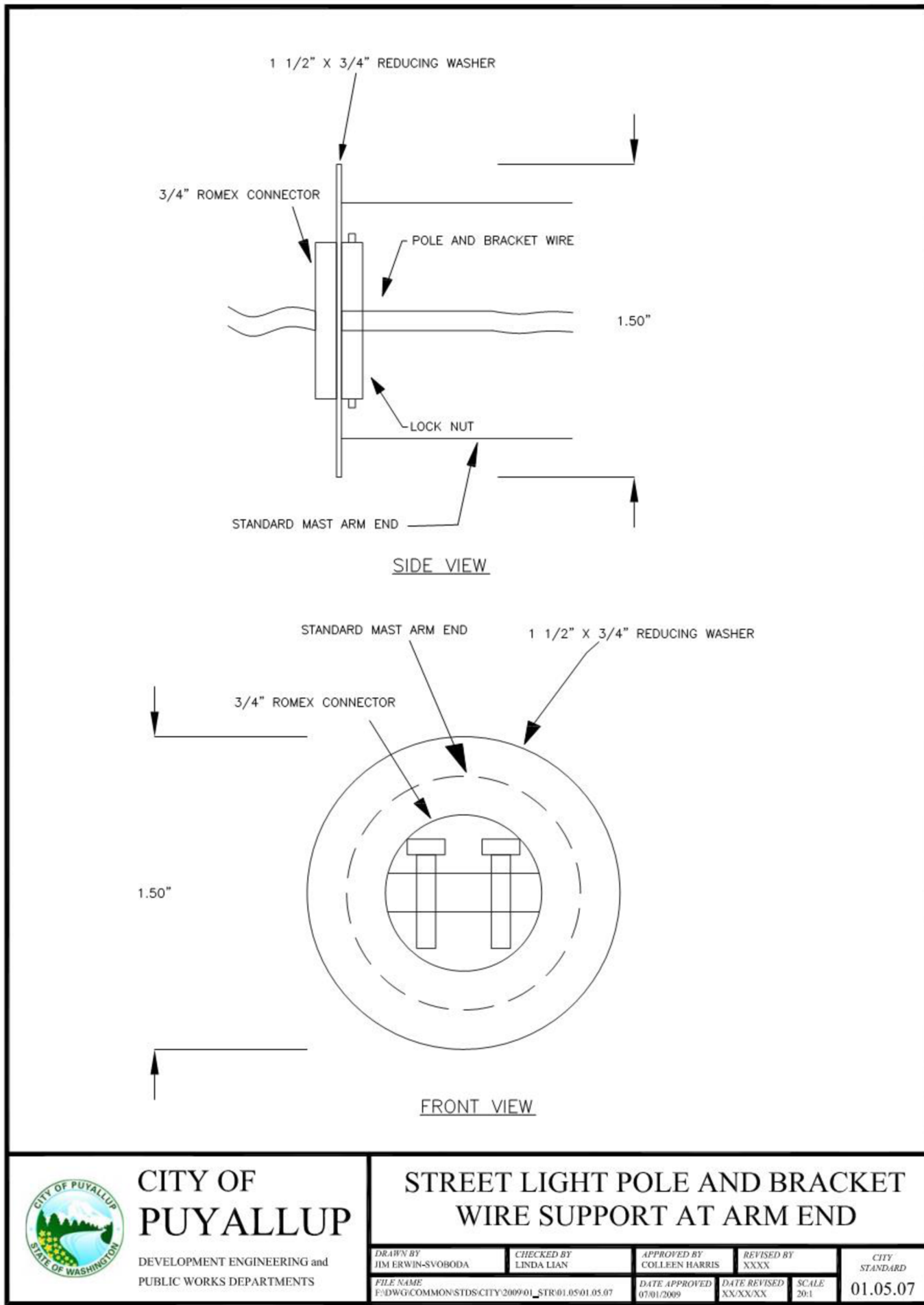
For the next submission combine both the Civil
plans and Street lighting Site Plan. [lighting, sheet 1]

433rd Ave SW consists of a 60' right of way. Once this roadway is
formally built out, the ROW will meet city standard 01.01.02. Show
dimensions of a 5' sidewalk, and 7.5' planting strip such that the
streetlight is located in the future planter strip such that the
streetlight will not have to be relocated and the luminaire overhangs
a minimum 3' from the future face of curb. [lighting, sheet 1]

Add a legend to this plan sheet. Be sure to
include the yellow lane center striping as shown
on this sheet. [lighting, sheet 1]

EXISTING	DESCRIPTION	PROPOSED
	CENTER LINE	
	PROPERTY LINE	
	RIGHT OF WAY LINE	
	EASEMENT LINE	
	BUILDING SETBACK LINE	
	CHAIN LINK FENCE	
	WOOD FENCE	
	EDGE OF PAVEMENT	
	CONTOURS	
	STREET SIGN	
	STORM DRAIN CATCH BASIN	
	STORM DRAIN CLEANOUT	
	STORM DRAIN LINE	
	ROOF DRAIN LINE	
	FIRE HYDRANT	
	WATER VALVE	
	WATER METER	
	THRUST BLOCKING	
	WATER MAIN	
	LUMINAIRE	
	OVER HEAD POWER	
	POWER/UTILITY POLE	
	GUY WIRE	
	POWER VAULT	
	GAS MAIN	
	GAS VALVE	
	TELEPHONE LINE	
	TELEPHONE RISER	
	MAIL BOX	
	ASPHALT CONCRETE	
	CEMENT CONCRETE	

DATE: 10/11/2023
SUBMITTAL: PERMIT
PROJECT No. 223-328



REUSE OF DOCUMENTS
THE DRAWINGS AND SPECIFICATIONS CONTAINED HEREIN ARE THE PROPRIETARY, UNPUBLISHED PROPERTY OF BCE ENGINEERS, INC. AND SHALL NOT BE REPRODUCED, COPIED, OR DISCLOSED IN WHOLE OR PART WITHOUT THE WRITTEN PERMISSION OF BCE ENGINEERS, INC.

**PUYALLUP DUPLEX
STREET LIGHTING**
433 & 409 43RD AV SW
PUYALLUP, WA 98373

**CITY OF PUYALLUP
STREET LIGHTING DETAILS**

REVISIONS		
NO.	DESCRIPTION	DATE

DRAWN BY: AS
CHECKED BY: BH
PROJECT MANAGER: AS

DRAWING No. 3 of 3 TOTAL

E1.3
DATE: 10/11/2023
SUBMITTAL: PERMIT
PROJECT No. 223-328

APPROVED

BY

CITY OF PUYALLUP
ENGINEERING SERVICES

DATE

NOTE: THIS APPROVAL IS VOID AFTER 1 YEAR FROM APPROVAL DATE. THE CITY WILL NOT BE RESPONSIBLE FOR ERRORS AND/OR OMISSIONS ON THESE PLANS. FIELD CONDITIONS MAY DICTATE CHANGES TO THESE PLANS AS DETERMINED BY THE ENGINEERING SERVICE MANAGER