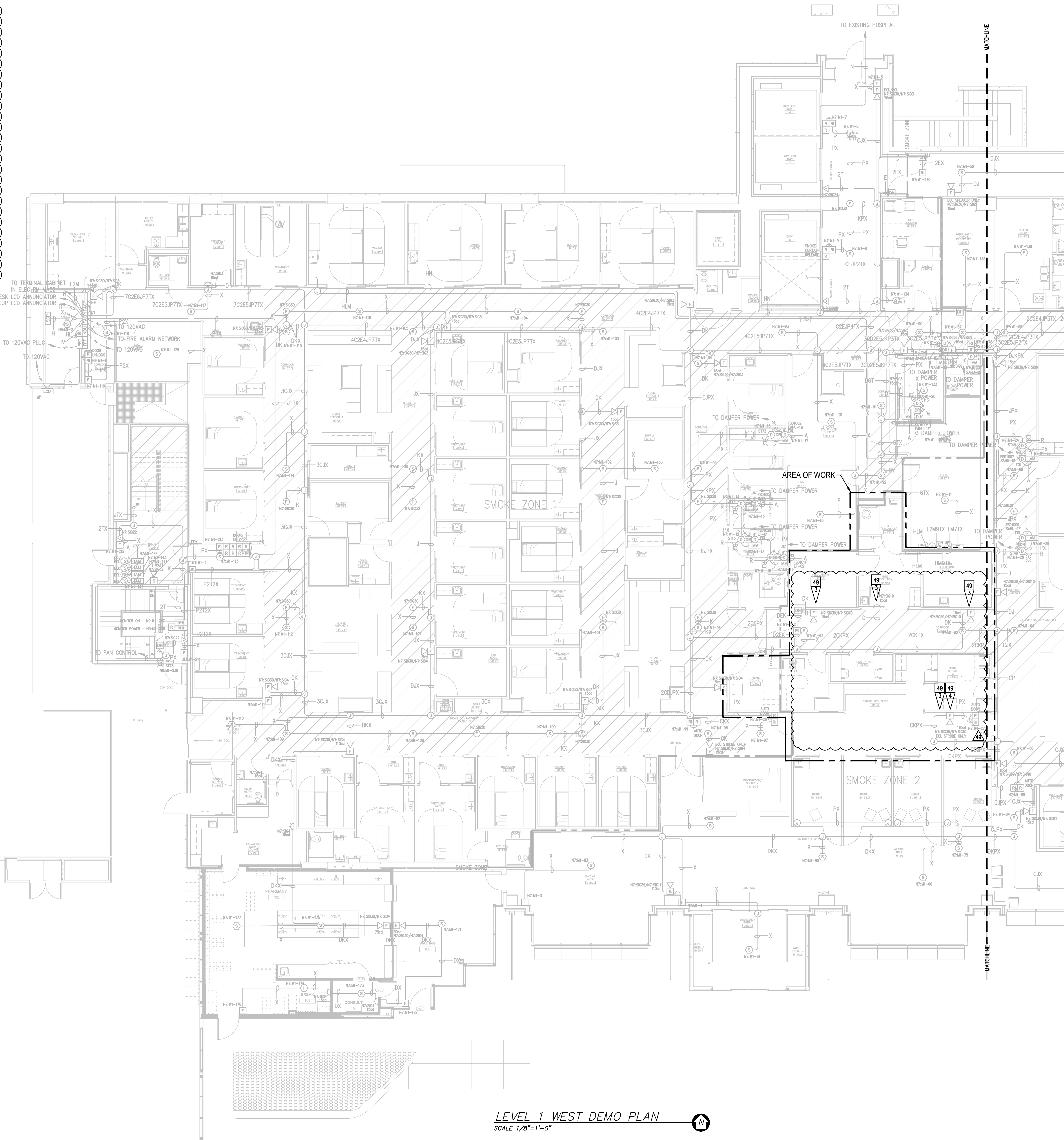


**GENERAL NOTES:**

- EXISTING INFORMATION IS SHOWN LIGHT AND BASED ON INFORMATION PROVIDED BY OTHERS. FIELD VERIFY ALL EXISTING EQUIPMENT AND CONNECTIONS AS NEEDED.
- TAP ALL SPEAKERS AT 1/2W. 25Vrms. FIELD VERIFY VOLTAGE.
- CONTRACTOR TO REDLINE AND NOTE ANY AND ALL CHANGES ON RECORD DRAWING PLANS.

**REVISION 49 FLAG NOTES:**

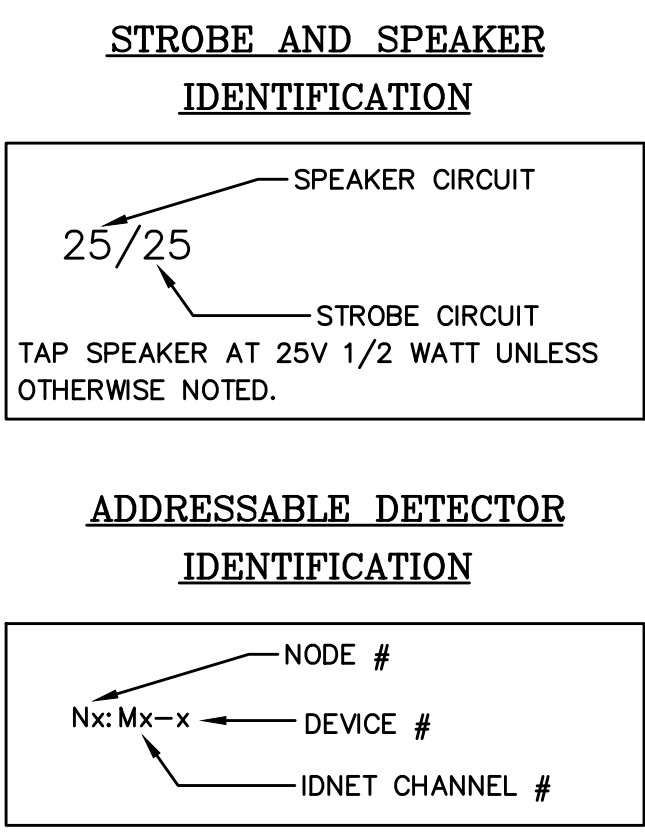
- EXISTING DEVICE TO BE REMOVED AND SAVED FOR RELOCATION AS NECESSARY. REMOVE UNNEEDED ASSOCIATED WIRING AND MAINTAIN CIRCUIT INTEGRITY. RELOCATE ANY E.O.L. RESISTORS AS NEEDED. SEE FA-LEV1-W FOR ADDITIONAL CIRCUIT INFORMATION.
- REINSTALL EXISTING DEVICE IN THIS LOCATION. SET CANDELA AND OR DEVICE ADDRESS AS SHOWN. FIELD VERIFY ANY CONNECTIONS TO EXISTING CIRCUITS.
- DEVICES TO BE REMOVED AND RETURNED TO OWNER FOR DISPOSAL. REMOVE UNNEEDED ASSOCIATED WIRING AND MAINTAIN CIRCUIT INTEGRITY.
- EXISTING CIRCUIT END OF LINE RESISTOR TO BE REMOVED FROM THIS LOCATION AND REINSTALLED TO LOCATION SHOWN ON FLOOR PLAN SHEET. MAINTAIN CIRCUIT INTEGRITY DURING DEMO PHASE.
- RELOCATE END OF LINE RESISTOR TO THIS LOCATION.



Symbol	Description	Part #	Backbox
[Symbol]	Multiscandela Wall Speaker/Strobe - White	4006-9153	5" sq 2.875" deep w/ ext ring 4" sq adapter by EC
[Symbol]	Multiscandela Ceiling Speaker/Strobe - White	4006-9154	5" sq 2.875" deep w/ ext ring 4" sq adapter by EC
[Symbol]	Multiscandela Wall Strobe - White	4006-9103	4" sq by EC
[Symbol]	Multiscandela Ceiling Strobe - White	4006-9102	4" sq by EC
[Symbol]	Wall Speaker - White	4002-9717	5" sq 2.875" deep w/ ext ring 4" sq adapter by EC
[Symbol]	Ceiling Speaker - White	4002-9721	5" sq 2.875" deep w/ ext ring 4" sq adapter by EC
[Symbol]	Addressable Manual Station	4099-9003 w/ 311100 Cover	4" sq 2.187" deep w/ sq ring by EC
[Symbol]	Addressable Manual Station Suppression	4099-9015 w/ 4099-9002 Label Kit	4" sq 2.187" deep w/ sq ring by EC
[Symbol]	TrueAlarm Smoke Sensor	4098-9714 w/ 4098-9792 Base	4" sq 2.187" deep w/ sq ring by EC
[Symbol]	TrueAlarm Heat Sensor	4098-9713 w/ 4098-9792 Base	4" sq 2.187" deep w/ sq ring by EC
[Symbol]	Heat Detector - 139FT	4098-9792	4" sq 2.187" deep w/ sq ring by EC
[Symbol]	TrueAlarm Duct Sensor	4098-9796	self-contained
[Symbol]	Remote LED w/ Test	2088-8006	sq by EC
[Symbol]	Duct Detector Relay	4098-9843	4" sq wing & cover by EC
[Symbol]	Beam Smoke Detector - Transmitter	BEAM1234	Surface Box w/BEAMSMK Surface
[Symbol]	Beam Smoke Detector - Reflector	4099-9101	4" sq 2.187" deep w/ 2-gang cover by EC
[Symbol]	Supervised IAM	4099-9001	4" sq wing & cover by EC
[Symbol]	Flow Switch	By Others	By Others
[Symbol]	Pressure Switch	By Others	By Others
[Symbol]	Low Air Switch	By Others	By Others
[Symbol]	Temp Switch	By Others	By Others
[Symbol]	Post Indicator Valve	By Others	By Others
[Symbol]	Coil Supervision Module	2081-8046	By Others
[Symbol]	Pre-Action Solenoid	By Others	By Others
[Symbol]	Door Holders	By Others	Included
[Symbol]	Suppression Mech. Disconnect	2080-9000	By Others
[Symbol]	Relay IAM	4099-9002	4" sq 2.187" deep w/ 2-gang cover by EC
[Symbol]	Remote Relay	2088-8008	self-contained
[Symbol]	FFT Jack	2084-9001	sq by EC
[Symbol]	FFT Cabinet	2088-9006 w/ 610-2084-9024 handles	23.5" x 23.5" x 4.0" D
[Symbol]	Smoke Control Panel	CEFA-GR-GP6	41" x 29" x 4.75" D
[Symbol]	Suppression Releasing Peripherals	4099-9006	8.125" x 6.125" x 4" D
[Symbol]	Printer	4190-9013	Table Top
[Symbol]	LCD Annunciator	4063-9101	6-gang 3.5" deep by EC or RSA-WP-SA 13" x 23.5" x 5.5" D
[Symbol]	Terminal Cabinet	35U0681	19" x 24" x 6.375" D
[Symbol]	Transponder Panel	4100-9601	50" x 24" x 6.375" D
[Symbol]	Fire Alarm Control Panel	4100-9114	50" x 24" x 6.375" D
[Symbol]	Network Display Unit	4100-9151	50" x 24" x 6.375" D
[Symbol]	400TES Pre-Action Panel	4007-9101	16.25" x 13.5" x 5.75" D

Letter	Qty	Color/Type	Size	Function
A	2	Black/Orange TFN	16	Zone
C	2	Red/Blue THHN	14	Horn/Strobe
D	4	(2) Red/2) Blue THHN	14	Horn/Strobe Loop
E	2	Brown/Yellow THHN	14	Door Holders
F	2	Orange THHN	14	Fan Shutdown
H	2	Red/Black THHN	18	Serial Communication
J	1	WestPenn 991	16	Speaker
K	2	WestPenn 991	16	Speaker Loop
L	1	WestPenn 5220FZ	16	Local Network Connection**
M	1	WestPenn 5220FZ	16	Miniplex Transponder**
N	1	WestPenn 5120UZ	14	Network Connection
P	2	Red/Black THHN	14	24VDC Power
R	2	Blue/White TFN	16	Remote LED w/Test
T	2	Pink TFN	16	Pin
V	1	WestPenn 991	16	Fire Fighter Telephone
X	1	WestPenn D975	18	Addressable Data Line

\*\* 2-hr cable for survivability



12781 Greentree Drive  
Tukwila, WA 98188  
SALES: 206-291-1400  
SERVICE: 206-291-1400

REVISION	DESCRIPTION	DATE	BY	CHECKED	DATE	BY	CHECKED
49	REVISION 49 FLAG NOTES	9/20/19	47	48	9/21/22	48	49

**DRAWINGS REVIEWED BY:**  
Eric Beck, CET  
NICK K228584  
Fire Alarm Systems, Level III

**FIRE ALARM SYSTEM  
LEVEL 1 WEST FLOOR PLAN**

**GOOD SAMARITAN - PATIENT CARE TOWER**  
401 15TH AVENUE SE  
PUYALLUP, WA 98371

APPROVED BY:  
C. McCAMMON

DRAWN BY:  
C. McCAMMON

DATE:  
8/12/09

SITE/PROJECT NUMBER:  
458413141/943123501

SHEET NUMBER:  
FA-LEV1-W-D

LEVEL 1 WEST DEMO PLAN  
SCALE 1/8"=1'-0"

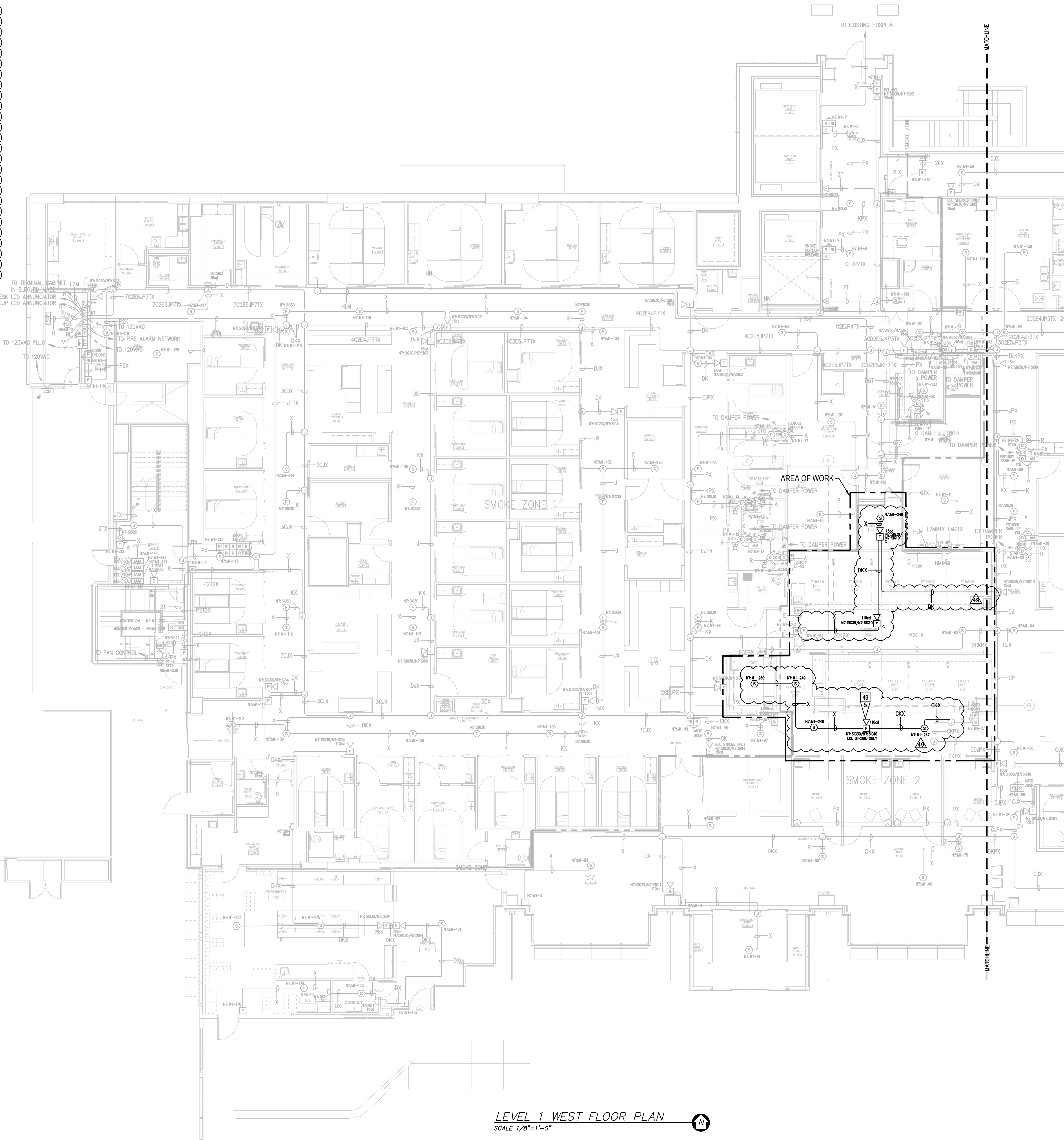


**GENERAL NOTES:**

- EXISTING INFORMATION IS SHOWN LIGHT AND BASED ON INFORMATION PROVIDED BY OTHERS. FIELD VERIFY ALL EXISTING EQUIPMENT AND CONNECTIONS AS NEEDED.
- TAP ALL SPEAKERS AT 1/2W, 25watts. FIELD VERIFY VOLTAGE.
- CONTRACTOR TO REDLINE AND NOTE ANY AND ALL CHANGES ON RECORD DRAWING PLANS.

**REVISION 49 FLAG NOTES:**

- EXISTING DEVICE TO BE REMOVED AND SAVED FOR RELOCATION AS NECESSARY. REMOVE UNNEEDED ASSOCIATED WIRING AND MAINTAIN CIRCUIT INTEGRITY. RELOCATE ANY E.O.L. RESISTORS AS NEEDED. SEE FA-LEV1-W FOR ADDITIONAL CIRCUIT INFORMATION.
- REINSTALL EXISTING DEVICE IN THIS LOCATION. SET CANDELA AND OR DEVICE ADDRESS AS SHOWN. FIELD VERIFY ANY CONNECTIONS TO EXISTING CIRCUITS.
- DEVICES TO BE REMOVED AND RETURNED TO OWNER FOR DISPOSAL. REMOVE UNNEEDED ASSOCIATED WIRING AND MAINTAIN CIRCUIT INTEGRITY.
- EXISTING CIRCUIT END OF LINE RESISTOR TO BE REMOVED FROM THIS LOCATION AND REINSTALLED TO LOCATION SHOWN ON FLOOR PLAN SHEET. MAINTAIN CIRCUIT INTEGRITY DURING DEMO PHASE.
- RELOCATE END OF LINE RESISTOR TO THIS LOCATION.

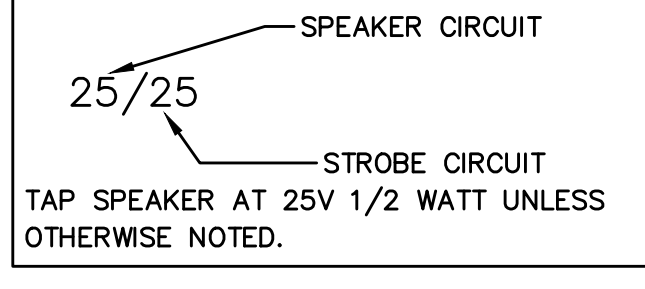


Symbol	Description	Part #	Backbox
[Symbol]	Multicandela Wall Speaker/Strobe - White	4006-9153	5" sq 2.875" deep w/ ext ring 4" sq adapter by EC
[Symbol]	Multicandela Ceiling Speaker/Strobe - White	4006-9154	5" sq 2.875" deep w/ ext ring 4" sq adapter by EC
[Symbol]	Multicandela Wall Strobe - White	4006-9103	4" sq by EC
[Symbol]	Multicandela Ceiling Strobe - White	4006-9102	4" sq by EC
[Symbol]	Wall Speaker - White	4002-9717	5" sq 2.875" deep w/ ext ring 4" sq adapter by EC
[Symbol]	Ceiling Speaker - White	4002-9721	5" sq 2.875" deep w/ ext ring 4" sq adapter by EC
[Symbol]	Addressable Manual Station	4099-8003 w/ 311100 Cover	4" sq 2 1/8" deep w/ sq ring by EC
[Symbol]	Addressable Manual Station	4099-8015 w/ 4099-8002 Label Kit	4" sq 2 1/8" deep w/ sq ring by EC
[Symbol]	TrueAlarm Smoke Sensor	4098-9714 w/ 4098-9792 Base	4" oct by EC
[Symbol]	TrueAlarm Heat Sensor	4098-9713 w/ 4098-9792 Base	4" oct by EC
[Symbol]	Heat Detector - 139FT	4098-9792 Base ED-2638-PL	4" oct by EC
[Symbol]	TrueAlarm Duct Sensor	4098-9756	self-contained
[Symbol]	Remote LED w/ Test	2088-8006	sq by EC
[Symbol]	Duct Detector Relay	4098-9843	4" sq wing & cover by EC
[Symbol]	Beam Smoke Detector - Transmitter	BEAM1234	Surface Box w/BEAMSMK Surface
[Symbol]	Beam Smoke Detector - Reflector	4099-9101	Surface
[Symbol]	Monitor ZAM	4098-9713 w/ 2-gang cover by EC	4" sq wing & cover by EC
[Symbol]	Supervised IAM	4099-9001	By Others
[Symbol]	Flow Switch	By Others	By Others
[Symbol]	Pressure Switch	By Others	By Others
[Symbol]	Low Air Switch	By Others	By Others
[Symbol]	Temp Switch	By Others	By Others
[Symbol]	Post Indicator Valve	By Others	By Others
[Symbol]	Coil Supervision Module	2081-8046	By Others
[Symbol]	Pre-Action Solenoid	By Others	By Others
[Symbol]	Door Holders	By Others	Included
[Symbol]	Suppression Mech. Disconnect	2080-9000	Included
[Symbol]	Relay IAM	4099-9002	4" sq 2 1/8" deep w/ 2-gang cover by EC
[Symbol]	Remote Relay	2088-8008	Remote Relay
[Symbol]	FFT Jack	2084-9001	sq by EC
[Symbol]	FFT Cabinet	2088-9006 w/ 110-2084-9024 handles CEF-A-GR-GP6	23.5"W x 23.5"W x 4.0"D
[Symbol]	Smoke Control Panel	4099-9006	41"W x 29"W x 4.75"D
[Symbol]	Suppression Releasing Perforator	4099-9006	8.125" x 6.125" w x 4"D
[Symbol]	Printer	4199-9103	Table Top
[Symbol]	LCD Annunciator	4063-9101	6-gang 3.5" deep by EC or RSA-WP-SA 13"W x 23.5"W x 5.5"D
[Symbol]	Terminal Cabinet	35U06861	58"W x 24"W x 8.375"D
[Symbol]	Transponder Panel	4100-9114	58"W x 24"W x 8.375"D
[Symbol]	Fire Alarm Control Panel	4100-9114	58"W x 24"W x 8.375"D
[Symbol]	Network Display Unit	4100-9151	58"W x 24"W x 8.375"D
[Symbol]	400TES Pre-Action Panel	4007-9101	16.25"W x 13.5"W x 5.75"D

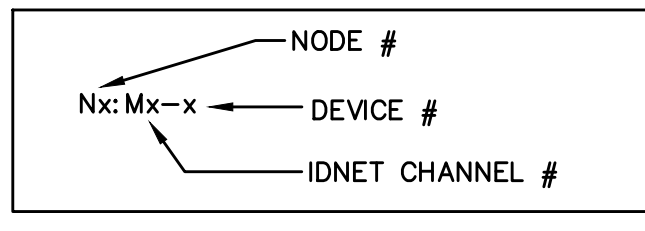
Letter	Qty	Color/Type	Size	Function
A	2	Black/Orange TFN	16	Zone
C	2	Red/Blue THHN	14	Home/Strobe
D	4	(2) Red/2) Blue THHN	14	Home/Strobe Loop
E	2	Brown/Yellow THHN	14	Door Holders
F	2	Orange THHN	14	Fan Shutdown
H	1	WestPenn D975	18	Serial Communication
J	2	Red/Black THHN	14	Speaker
K	1	WestPenn 991	16	Speaker Loop
L	1	WestPenn 5220FZ	16	Local Network Connection**
M	1	WestPenn 5220FZ	16	Miniplex Transponder**
N	2	WestPenn 5220FZ	16	Miniplex Transponder**
P	1	WestPenn 5120UZ	14	Network Connection
R	2	Red/Black THHN	14	24VDC Power
T	2	Blue/White TFN	16	Remote LED w/Test
V	1	Pink TFN	16	Fire Fighter Telephone
X	1	WestPenn 991	16	Printer
X	1	WestPenn D975	18	Addressable Data Line

\*\* 2-hr cable for survivability

**STROBE AND SPEAKER IDENTIFICATION**



**ADDRESSABLE DETECTOR IDENTIFICATION**



LEVEL 1 WEST FLOOR PLAN  
SCALE 1/8"=1'-0"

12781 Gateway Drive  
Tukwila, WA 98188  
SALES: 206-291-1400  
SERVICE: 206-291-1400

REVISION	DESCRIPTION	DATE	BY	CHECKED	DATE	BY	CHECKED
49	EXISTING DEVICE TO BE REMOVED AND SAVED FOR RELOCATION AS NECESSARY. REMOVE UNNEEDED ASSOCIATED WIRING AND MAINTAIN CIRCUIT INTEGRITY. RELOCATE ANY E.O.L. RESISTORS AS NEEDED. SEE FA-LEV1-W FOR ADDITIONAL CIRCUIT INFORMATION.	9/20/19	RSC	DAP	9/21/22	ARH	ARB
48	REINSTALL EXISTING DEVICE IN THIS LOCATION. SET CANDELA AND OR DEVICE ADDRESS AS SHOWN. FIELD VERIFY ANY CONNECTIONS TO EXISTING CIRCUITS.	9/20/19	RSC	DAP	9/21/22	ARH	ARB
47	DEVICES TO BE REMOVED AND RETURNED TO OWNER FOR DISPOSAL. REMOVE UNNEEDED ASSOCIATED WIRING AND MAINTAIN CIRCUIT INTEGRITY.	9/20/19	RSC	DAP	9/21/22	ARH	ARB
46	EXISTING CIRCUIT END OF LINE RESISTOR TO BE REMOVED FROM THIS LOCATION AND REINSTALLED TO LOCATION SHOWN ON FLOOR PLAN SHEET. MAINTAIN CIRCUIT INTEGRITY DURING DEMO PHASE.	9/20/19	RSC	DAP	9/21/22	ARH	ARB
45	RELOCATE END OF LINE RESISTOR TO THIS LOCATION.	9/20/19	RSC	DAP	9/21/22	ARH	ARB

**DRAWINGS REVIEWED BY:**  
Eric Beck, CET  
NICK K228584  
Fire Alarm Systems, Level III

**FIRE ALARM SYSTEM  
LEVEL 1 WEST FLOOR PLAN**

**GOOD SAMARITAN - PATIENT CARE TOWER**  
401 15TH AVENUE SE  
PUYALLUP, WA 98371

APPROVED BY:  
C. McCAMMON

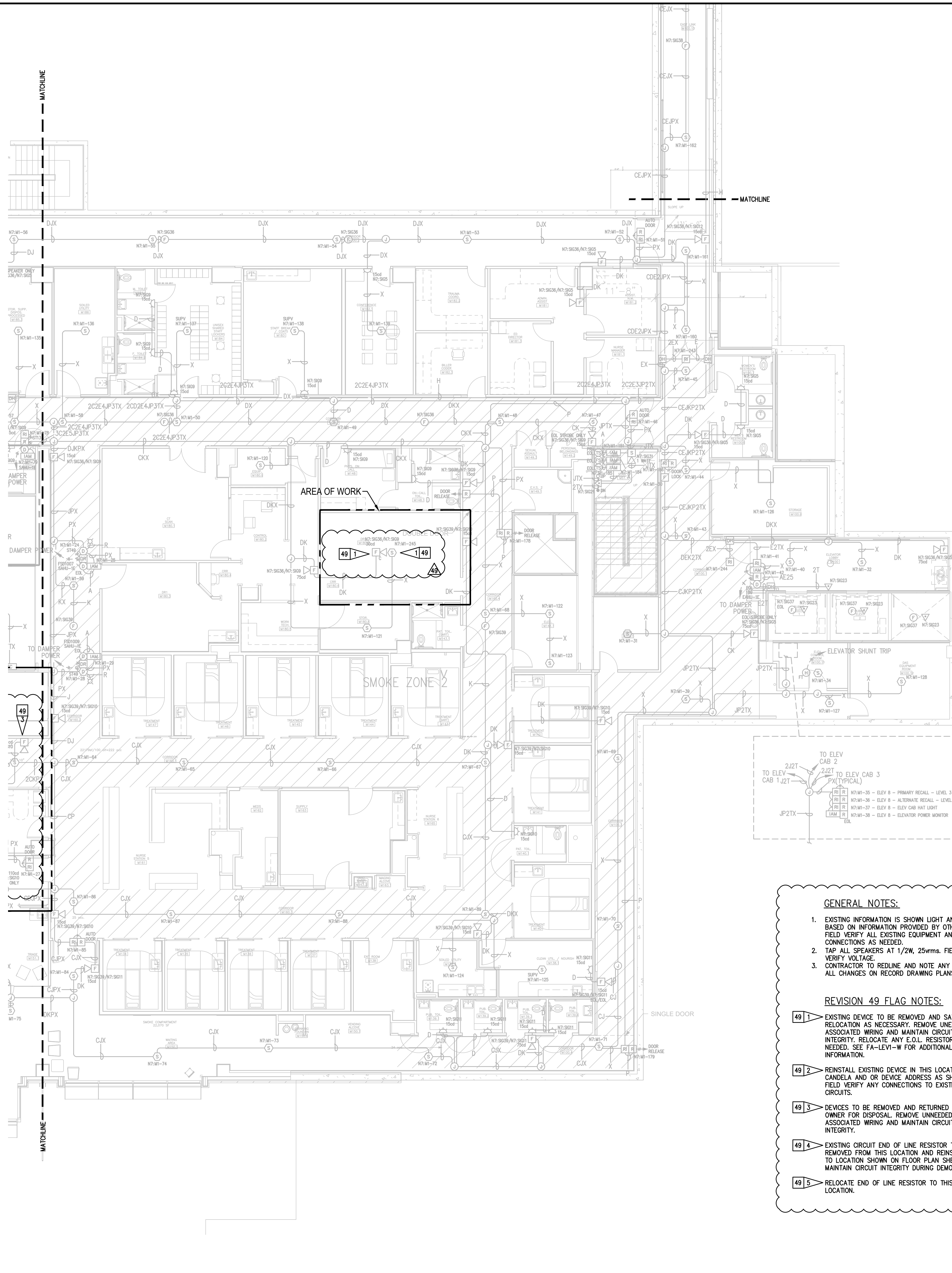
DRAWN BY:  
C. McCAMMON

DATE:  
8/12/09

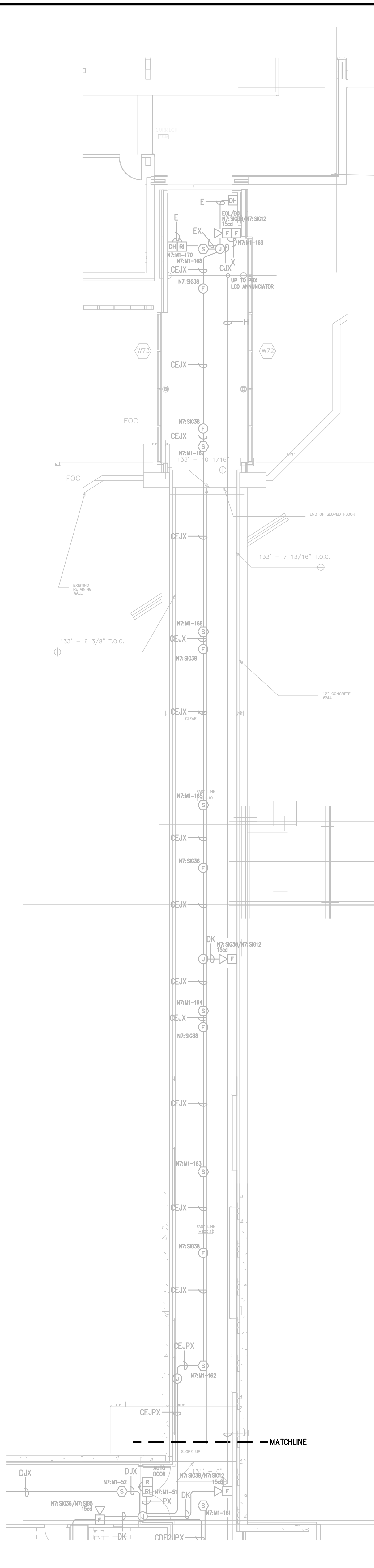
SITE/PROJECT NUMBER:  
458413141/943123501

SHEET NUMBER:  
FA-LEV1-W





LEVEL 1 EAST DEMO PLAN  
SCALE 1/8"=1'-0"



LEVEL 1 EAST LINK FLOOR PLAN  
SCALE 1/8"=1'-0"

**GENERAL NOTES:**

- EXISTING INFORMATION IS SHOWN LIGHT AND BASED ON INFORMATION PROVIDED BY OTHERS. FIELD VERIFY ALL EXISTING EQUIPMENT AND CONNECTIONS AS NEEDED.
- TAP ALL SPEAKERS AT 1/2W, 25wrms. FIELD VERIFY VOLTAGE.
- CONTRACTOR TO REDLINE AND NOTE ANY AND ALL CHANGES ON RECORD DRAWING PLANS.

**REVISION 49 FLAG NOTES:**

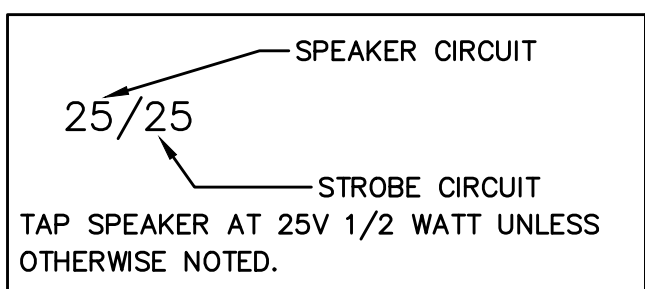
- EXISTING DEVICE TO BE REMOVED AND SAVED FOR RELOCATION AS NECESSARY. REMOVE UNNEEDED ASSOCIATED WIRING AND MAINTAIN CIRCUIT INTEGRITY. RELOCATE ANY E.O.L. RESISTORS AS NEEDED. SEE FA-LEV1-W FOR ADDITIONAL CIRCUIT INFORMATION.
- REINSTALL EXISTING DEVICE IN THIS LOCATION. SET CANDELA AND OR DEVICE ADDRESS AS SHOWN. FIELD VERIFY ANY CONNECTIONS TO EXISTING CIRCUITS.
- DEVICES TO BE REMOVED AND RETURNED TO OWNER FOR DISPOSAL. REMOVE UNNEEDED ASSOCIATED WIRING AND MAINTAIN CIRCUIT INTEGRITY.
- EXISTING CIRCUIT END OF LINE RESISTOR TO BE REMOVED FROM THIS LOCATION AND REINSTALLED TO LOCATION SHOWN ON FLOOR PLAN SHEET. MAINTAIN CIRCUIT INTEGRITY DURING DEMO PHASE.
- RELOCATE END OF LINE RESISTOR TO THIS LOCATION.

Symbol	Description	Part #	Backbox
[Symbol]	Multicandela Wall Speaker/Strobe - White * subscript indicates circuit # and candela setting	4906-9153	5" sq 2.875" deep w/ ext ring 4"sq adapter by EC
[Symbol]	Multicandela Ceiling Speaker/Strobe - White * subscript indicates circuit # and candela setting	4906-9154	5" sq 2.875" deep w/ ext ring 4"sq adapter by EC
[Symbol]	Multicandela Wall Strobe - White * subscript indicates circuit # and candela setting	4906-9103	4" sq by EC
[Symbol]	Multicandela Ceiling Strobe - White * subscript indicates circuit # and candela setting	4906-9102	4" sq by EC
[Symbol]	Wall Speaker - White * subscript indicates circuit #	4902-9717	5" sq 2.875" deep w/ ext ring 4"sq adapter by EC
[Symbol]	Ceiling Speaker - White * subscript indicates circuit #	4902-9721	5" sq 2.875" deep w/ ext ring 4"sq adapter by EC
[Symbol]	Addressable Manual Station * subscript indicates device address	4099-9003 w/ 5111100 Cover	4" sq 2 1/8" deep w/ sq ring by EC
[Symbol]	Addressable Manual Station Suppression * subscript indicates device address	4099-9015 w/ 4099-9802 Label Kit	4" sq 2 1/8" deep w/ sq ring by EC
[Symbol]	TrueAlarm Smoke Sensor * subscript indicates device address/ SPSPU indicates supervisory device	4098-9714 w/ 4098-9792 Base	4" oct by EC
[Symbol]	TrueAlarm Heat Sensor * subscript indicates device address	4098-9733 w/ 4098-9792 Base	4" oct by EC
[Symbol]	Heat Detector - 135FT	ED-2838-PL	4" oct by EC
[Symbol]	TrueAlarm Duct Sensor * subscript indicates device address and sampling tube size	4098-9756	self-contained
[Symbol]	Remote LED w/Test	2098-9806	sq by EC
[Symbol]	Duct Detector Relay	4098-9843	4"sq w/sg & cover by EC
[Symbol]	Beam Smoke Detector - Transmitter	BEAM1224	Surface Box w/BEAMSMK Surface
[Symbol]	Beam Smoke Detector - Reflector * subscript indicates device address	4090-9101	4"sq 2 1/8" deep w/ 2-gang cover by EC
[Symbol]	Supervised IAM * subscript indicates device address	4090-9001	4"sq w/sg & cover by EC
[Symbol]	Flow Switch	By Others	By Others
[Symbol]	Pressure Switch	By Others	By Others
[Symbol]	Low Air Switch	By Others	By Others
[Symbol]	Tamper Switch	By Others	By Others
[Symbol]	Post Indicator Valve	By Others	By Others
[Symbol]	Col Supervision Module	2081-9046	
[Symbol]	Pre-Action Solenoid	By Others	By Others
[Symbol]	Door Holders	By Others	
[Symbol]	Suppression Mech. Disconnect	2080-9060	Included
[Symbol]	Relay IAM * subscript indicates device address	4090-9002	4"sq 2 1/8" deep w/ 2-gang cover by EC
[Symbol]	Remote Relay	2088-9008	self-contained
[Symbol]	FFT Jack	2084-9001	sg by EC
[Symbol]	FFT Cabinet	2084-9026 w/ (10) 2084-9024 handsets	23.5"H x 23.5"W x 4.0"D
[Symbol]	Smoke Control Panel	CEP-L-GR-GP6	41"H x 29"W x 4.75"D
[Symbol]	Suppression Releasing Peripheral	4090-9006	8.125"H x 6.125"W x 4.0"D Surface Mount
[Symbol]	Printer	4190-9013	Table Top
[Symbol]	LCD Annunciator	4603-9101	6-gang 3.5"deep by EC or RSA-WP-SA
[Symbol]	Terminal Cabinet	SSU00661	13"H x 23.5"W x 5.5"D
[Symbol]	Transponder Panel	4100-9601	56"H x 24"W x 8.375"D 2975-9432
[Symbol]	Fire Alarm Control Panel	4100-9114	56"H x 24"W x 8.375"D 2975-9426
[Symbol]	Network Display Unit	4100-9151	56"H x 24"W x 8.375"D 2975-9426
[Symbol]	4007ES Pre-Action Panel	4007-9101	16.25"H x 13.5"W x 5.75"D

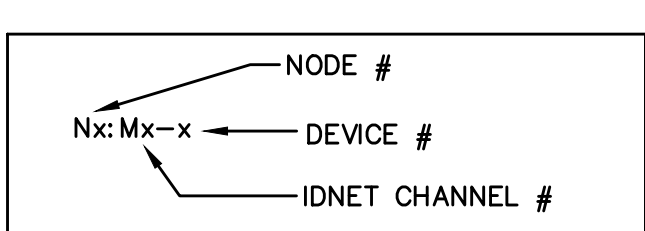
Letter	Qty	Color/Type	Size	Function
A	2	Black/Orange TFN	16	Zone
C	2	Red/Blue THHN	14	Horn/Strobe
D	4	(2) Red/2) Blue THHN	14	Horn/Strobe Loop
E	2	Brown/Yellow THHN	14	Door Holders
F	2	Orange THHN	14	Fan Shutdown
H	1	WestPenn D975	18	Serial Communication
J	1	Red/Black THHN	14	Speaker
J	1	WestPenn 991	16	Speaker
K	2	WestPenn 991	16	Speaker Loop
L	1	WestPenn 5220FZ	16	Local Network Connection**
L	1	WestPenn 5220FZ	16	Miniplex Transponder**
M	1	WestPenn 5220FZ	16	Miniplex Transponder**
M	1	WestPenn 5120UZ	14	Network Connection
N	2	WestPenn D975	18	24VDC Power
P	2	Red/Black THHN	14	Remote LED w/Test
R	2	Blue/White TFN	16	Fire Fighter Telephone
T	2	Pink TFN	16	Printer
V	1	WestPenn 991	16	Addressable Data Line
V	1	WestPenn D977	18	
X	1	WestPenn D975	18	

\*\* 2r cable for survivability

**STROBE AND SPEAKER IDENTIFICATION**



**ADDRESSABLE DETECTOR IDENTIFICATION**



12781 Gateway Drive  
Tukwila, WA 98188  
SALES: 206-291-1400  
SERVICE: 206-291-1400

PROJECT #	ENGINEER	DATE	DESCRIPTION	REVISION	NO.
610318294	RSC	9/20/19	DAILY PHARMACY RECORD DRAWINGS	47	
660109145	QOB	9/21/22	EGRESS DOORS	48	
660576984	QOB	4/12/23	MRI PRE-ACTION PANEL UPGRADE	49	
660576984	QOB	9/12/23	MRI PRE-ACTION PANEL UPGRADE - RECORD DRAWING		
660476983	QOB	1/24/24	CSH ED. FAST TRACK REMODEL		

**DRAWINGS REVIEWED BY:**  
Eric Beck, CET  
NICK K22884  
Fire Alarm Systems, Level III

**FIRE ALARM SYSTEM  
LEVEL 1 EAST FLOOR PLAN  
GOOD SAMARITAN - PATIENT CARE TOWER**

401 15TH AVENUE SE  
POYALLUP, WA 98971

APPROVED BY:  
C. McCAMMON

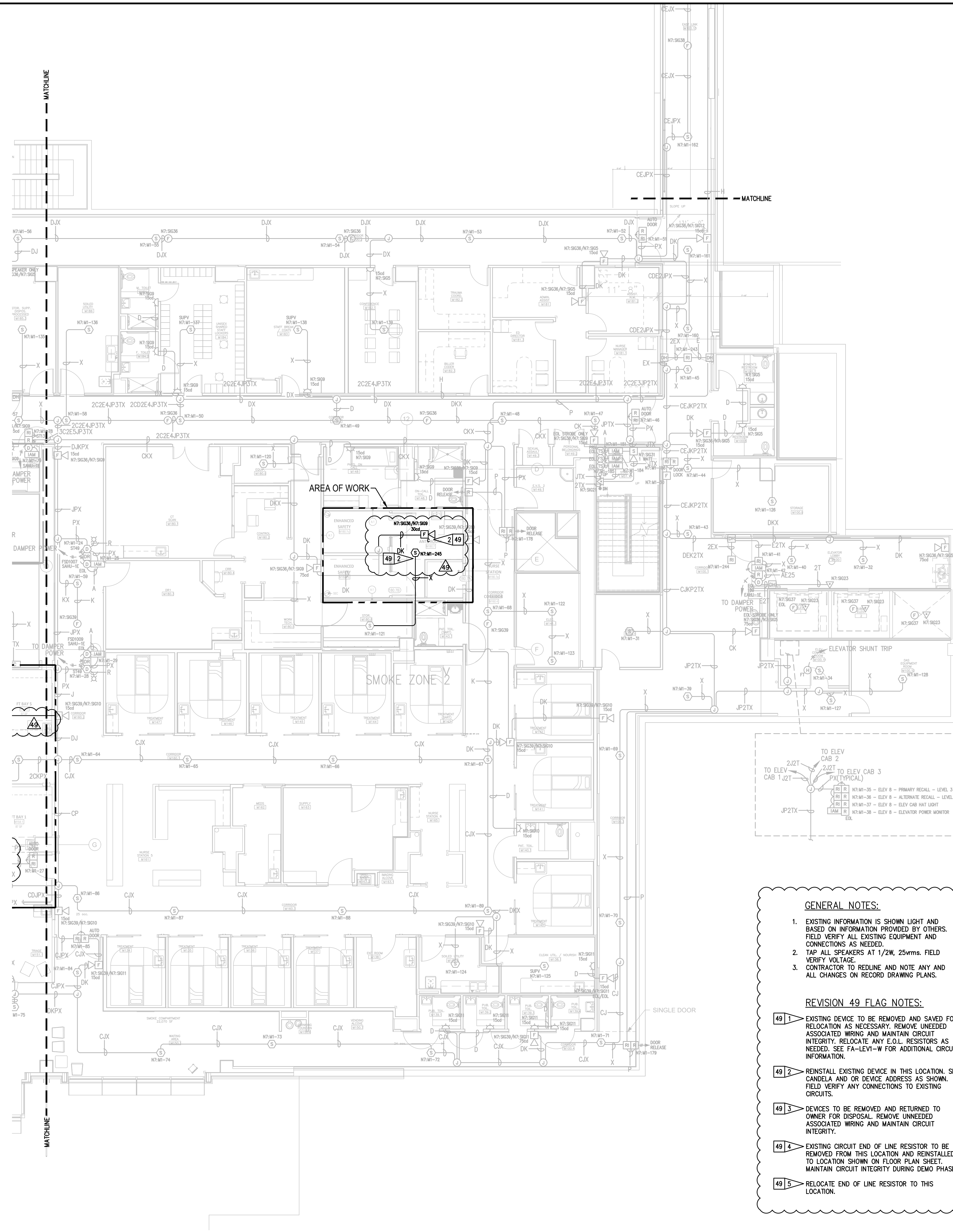
DRAWN BY:  
C. McCAMMON

DATE:  
8/12/09

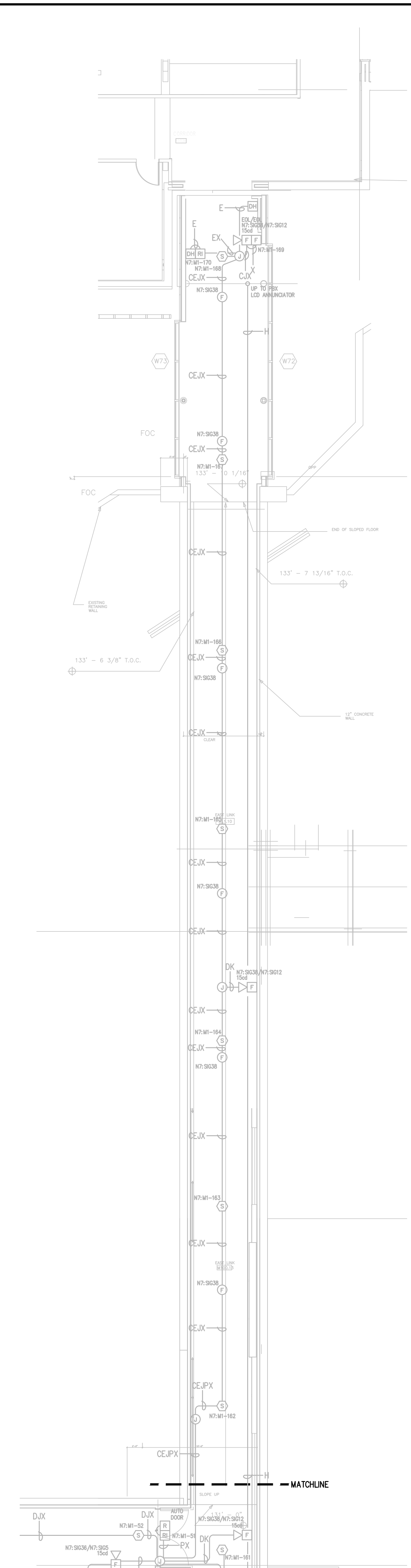
SITE/PROJECT NUMBER:  
458413141/943123501

SHEET NUMBER:  
FA-LEV1-E-D





LEVEL 1 EAST FLOOR PLAN  
SCALE 1/8"=1'-0"



LEVEL 1 EAST LINK FLOOR PLAN  
SCALE 1/8"=1'-0"

**GENERAL NOTES:**

- EXISTING INFORMATION IS SHOWN LIGHT AND BASED ON INFORMATION PROVIDED BY OTHERS. FIELD VERIFY ALL EXISTING EQUIPMENT AND CONNECTIONS AS NEEDED.
- TAP ALL SPEAKERS AT 1/2W, 25Vrms. FIELD VERIFY VOLTAGE.
- CONTRACTOR TO REDLINE AND NOTE ANY AND ALL CHANGES ON RECORD DRAWING PLANS.

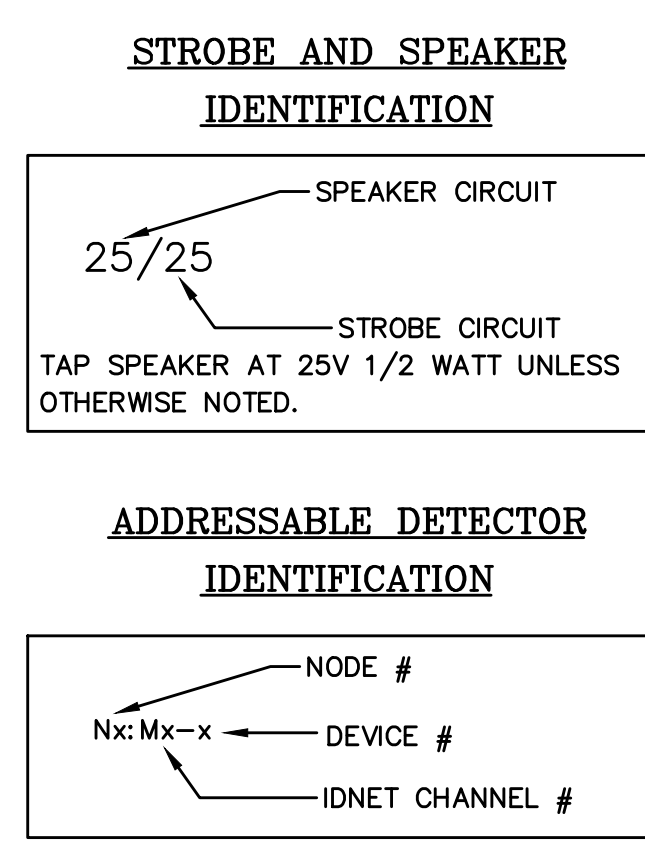
**REVISION 49 FLAG NOTES:**

- EXISTING DEVICE TO BE REMOVED AND SAVED FOR RELOCATION AS NECESSARY. REMOVE UNNEEDED ASSOCIATED WIRING AND MAINTAIN CIRCUIT INTEGRITY. RELOCATE ANY E.O.L. RESISTORS AS NEEDED. SEE FA-LEV1-W FOR ADDITIONAL CIRCUIT INFORMATION.
- REINSTALL EXISTING DEVICE IN THIS LOCATION. SET CANDELA AND OR DEVICE ADDRESS AS SHOWN. FIELD VERIFY ANY CONNECTIONS TO EXISTING CIRCUITS.
- DEVICES TO BE REMOVED AND RETURNED TO OWNER FOR DISPOSAL. REMOVE UNNEEDED ASSOCIATED WIRING AND MAINTAIN CIRCUIT INTEGRITY.
- EXISTING CIRCUIT END OF LINE RESISTOR TO BE REMOVED FROM THIS LOCATION AND REINSTALLED TO LOCATION SHOWN ON FLOOR PLAN SHEET. MAINTAIN CIRCUIT INTEGRITY DURING DEMO PHASE.
- RELOCATE END OF LINE RESISTOR TO THIS LOCATION.

Symbol	Description	Part #	Backbox
[Symbol]	Multicandela Wall Speaker/Strobe - White *subscript indicates circuit # and candela setting	4906-9153	5" sq 2.875" deep w/ ext ring 4"sq adapter by EC
[Symbol]	Multicandela Ceiling Speaker/Strobe - White *subscript indicates circuit # and candela setting	4906-9154	5" sq 2.875" deep w/ ext ring 4"sq adapter by EC
[Symbol]	Multicandela Wall Strobe - White *subscript indicates circuit # and candela setting	4906-9103	4" sq by EC
[Symbol]	Multicandela Ceiling Strobe - White *subscript indicates circuit # and candela setting	4906-9102	4" sq by EC
[Symbol]	Wall Speaker - White *subscript indicates circuit #	4902-9717	5" sq 2.875" deep w/ ext ring 4"sq adapter by EC
[Symbol]	Ceiling Speaker - White *subscript indicates circuit #	4902-9721	5" sq 2.875" deep w/ ext ring 4"sq adapter by EC
[Symbol]	Addressable Manual Station *subscript indicates device address	4099-9003 w/ 5111100 Cover	4" sq 2 1/8" deep w/ sq ring by EC
[Symbol]	Addressable Manual Station Suppression *subscript indicates device address	4099-9015 w/ 4099-9802 Label Kit	4" sq 2 1/8" deep w/ sq ring by EC
[Symbol]	TrueAlarm Smoke Sensor *subscript indicates device address/ SUPV indicates supervisory device	4098-9714 w/ 4098-9702 Base	4" oct by EC
[Symbol]	TrueAlarm Heat Sensor *subscript indicates device address	4098-9733 w/ 4098-9702 Base	4" oct by EC
[Symbol]	Heat Detector - 135FT	ED-2838-PL	4" oct by EC
[Symbol]	TrueAlarm Duct Sensor *subscript indicates device address and sampling tube size	4098-9756	self-contained
[Symbol]	Remote LED w/Test	2098-9806	sq by EC
[Symbol]	Duct Detector Relay	4098-9843	4"sq w/sg & cover by EC
[Symbol]	Beam Smoke Detector - Transmitter	BEAM1224	Surface Box w/BEAMSMK Surface
[Symbol]	Monitor ZAM *subscript indicates device address	4090-9101	4" sq 2 1/8" deep w/ 2-gang cover by EC
[Symbol]	Supervised IAM *subscript indicates device address	4090-9001	4"sq w/sg & cover by EC
[Symbol]	Flow Switch	By Others	By Others
[Symbol]	Pressure Switch	By Others	By Others
[Symbol]	Low Air Switch	By Others	By Others
[Symbol]	Tamper Switch	By Others	By Others
[Symbol]	Post Indicator Valve	By Others	By Others
[Symbol]	Col Supervision Module	2081-9046	
[Symbol]	Pre-Action Solenoid	By Others	By Others
[Symbol]	Door Holders	By Others	
[Symbol]	Suppression Mech. Disconnect	2080-9060	Included
[Symbol]	Relay IAM *subscript indicates device address	4090-9002	4"sq 2 1/8" deep w/ 2-gang cover by EC
[Symbol]	Remote Relay	2088-9008	self-contained
[Symbol]	FFT Jack	2084-9001	sg by EC
[Symbol]	FFT Cabinet	2084-9026 w/ (10) 2084-9024 handsets	23.5"H x 23.5"W x 4.0"D
[Symbol]	Smoke Control Panel	CEP-L-GR-CP6	41"H x 29"W x 4.75"D
[Symbol]	Suppression Releasing Peripheral	4090-9006	8.125"H x 6.125"W x 4"D Surface Mount
[Symbol]	Printer	4190-9013	Table Top
[Symbol]	LCD Annunciator	4603-9101	6-gang 3.5"deep by EC or RSA-WP-SA
[Symbol]	Terminal Cabinet	SSU00661	13"H x 23.5"W x 5.5"D
[Symbol]	Transponder Panel	4100-9601	56"H x 24"W x 8.375"D 2975-9432
[Symbol]	Fire Alarm Control Panel	4100-9114	56"H x 24"W x 8.375"D 2975-9426
[Symbol]	Network Display Unit	4100-9151	56"H x 24"W x 8.375"D 2975-9426
[Symbol]	4007ES Pre-Action Panel	4007-9101	16.25"H x 13.5"W x 5.75"D

Wire Code				
Letter	Qty	Color/Type	Size	Function
A	2	Black/Orange TFN	16	Zone
C	2	Red/Blue THHN	14	Horn/Strobe
D	4	(2) Red/2) Blue THHN	14	Horn/Strobe Loop
E	2	Brown/Yellow THHN	14	Door Holders
F	2	Orange THHN	14	Fan Shutdown
H	1	WestPenn D975	18	Serial Communication
J	1	WestPenn 991	16	Speaker
K	2	WestPenn 991	16	Speaker Loop
L	1	WestPenn 5220FZ	16	Local Network Connection**
M	1	WestPenn 5220FZ	16	Miniplex Transponder**
N	2	WestPenn 5120UZ	14	Network Connection
P	2	Red/Black THHN	14	24VDC Power
R	2	Blue/White TFN	16	Remote LED w/Test
T	1	WestPenn 991	16	Fire Fighter Telephone
V	1	WestPenn D975	18	Printer
X	1	WestPenn D975	18	Addressable Data Line

\*\* 2-hr cable for survivability



© 2017 JOHNSON CONTROLS  
ALL RIGHTS RESERVED

12781 Gateway Drive  
Tukwila, WA 98188  
SALES: 206-291-1400  
SERVICE: 206-291-1400

PROJECT #	ENGINEER	DRAWER	REVISION	DESCRIPTION	DATE	NO.
610318294	RSC	RSC	DAILY PHARMACY RECORD DRAWINGS	9/20/19	47	
660109145	BOB	DAP	EGRESS DOORS	9/21/22	48	
660576984	BOB	ARIH	MRI PRE-ACTION PANEL UPGRADE	4/12/23	49	
660576984	BOB	ARIH	MRI PRE-ACTION PANEL UPGRADE - RECORD DRAWING	9/12/23	49	
660476983	BOB	MAH	CSH ED. FAST TRACK REMODEL	1/24/24	49	

**DRAWINGS REVIEWED BY:**  
Eric Beck, CET  
NICK K22884  
Fire Alarm Systems, Level III

**FIRE ALARM SYSTEM**  
**LEVEL 1 EAST FLOOR PLAN**  
**GOOD SAMARITAN - PATIENT CARE TOWER**  
401 15TH AVENUE SE  
PUYALLUP, WA 98371

APPROVED BY:  
C. McCAMMON

DRAWN BY:  
C. McCAMMON

DATE:  
8/12/09

SITE/PROJECT NUMBER:  
458413141/943123501

SHEET NUMBER:  
FA-LEV1-E