

Approval of submitted plans is not an approval of omissions or oversights by this office or non compliance with any applicable regulations of local government. The contractor is responsible for making sure that the building complies with all applicable codes and regulations of the local government.

The approved construction plans, documents, and all engineering must be posted on the job at all inspections in a visible and readily accessible location.

Full sized legible color plans are required to be provided by the permittee on site for inspection.

**City of Puyallup**  
**Building**  
**REVIEWED**  
**FOR**  
**COMPLIANCE**

BSnowden  
05/16/2024  
2:05:46 PM

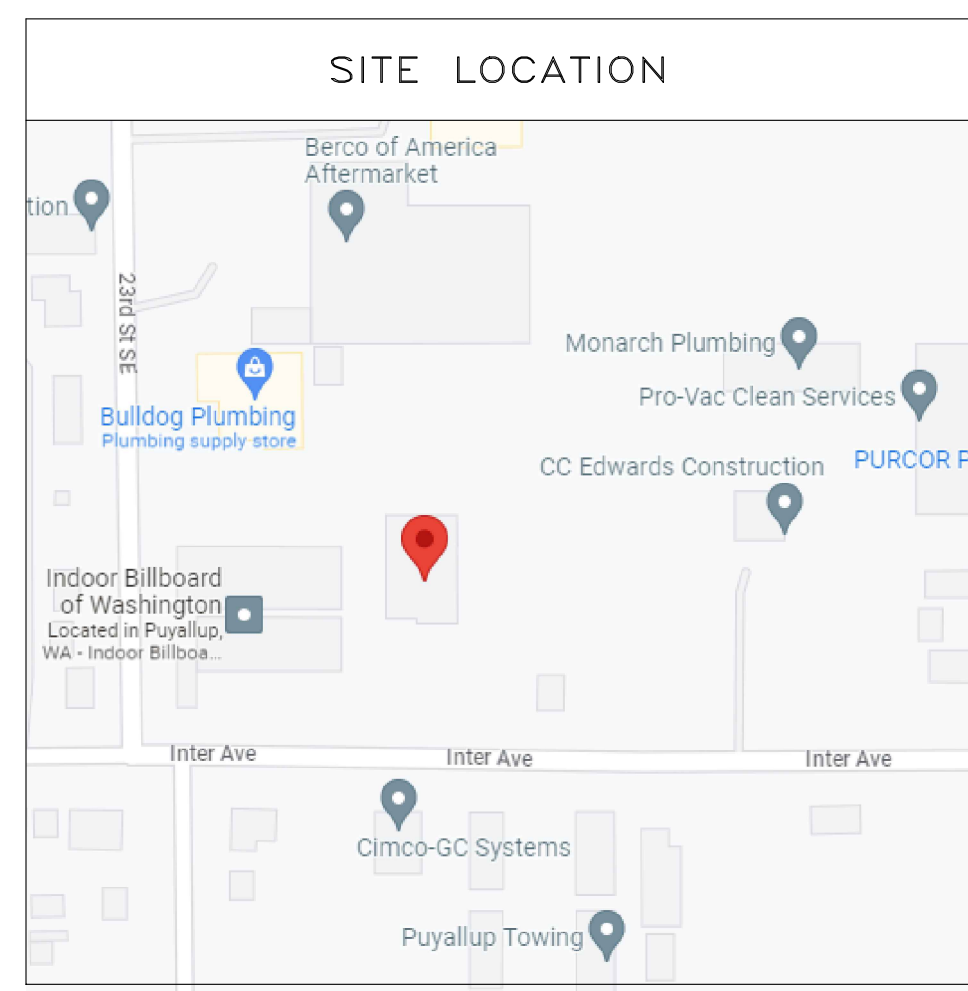
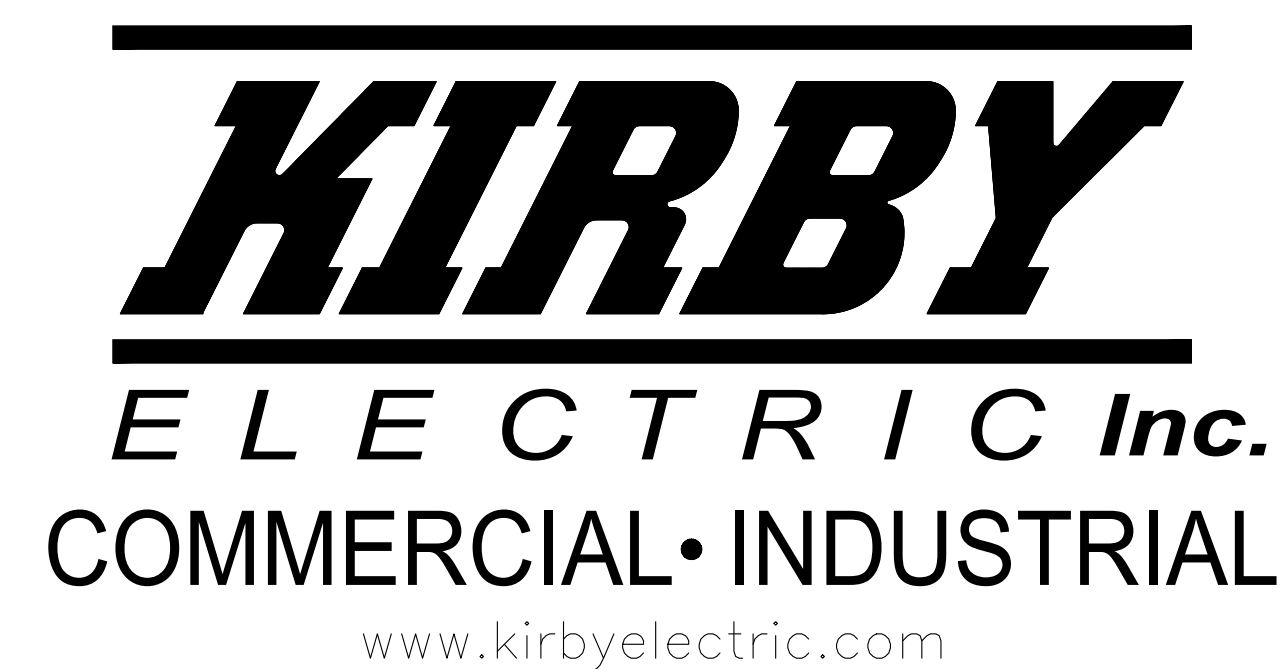


City of Puyallup Development & Permitting Services ISSUED PERMIT	
Building	Planning
Engineering	Public Works
Fire	Traffic



# CIMCO SALES

## ELECTRICAL DRAWINGS



CIMCO SALES  
2315 INTER AVE • PUYALLUP WA 98372

- REVISIONS:
- ⚠ (2024-04-15) BACKGROUND UPDATE AND LIGHTING LAYOUT
  - ⚠ (2024-05-15) LIGHTING SUMMARY ADDED
  - ⚠ (2024-05-15) LIGHTING SUMMARY UPDATED

PROJECT MANAGER	DENNIS RISHKOVVOY	DENNISK@KIRBYELECTRIC.COM
FOREMAN	----	----
DRAWING/DESIGN INFORMATION	Gurleen Toor	GURLEENT@KIRBYELECTRIC.COM
DRAWING/DESIGN INFORMATION	BRIAN MISHCHUK	BRIANM@KIRBYELECTRIC.COM

Sheet List Table	
Sheet Number	Sheet Title
E0.00	COVER SHEET
E0.01	EQUIPMENT SCHEDULES
E1.01	SITE PLAN
E2.01	POWER PLAN
E3.01	LIGHTING PLAN
E6.01	ONE-LINE RISER DIAGRAM

COVER SHEET  
DATE: 05-15-24  
DRAWN BY: C.V.S.  
CHECKED BY: -  
JOB NO: 23-025  
SHEET  
E0.00

# WSEC LIGHTING SUMMARY

LIGHTING COMPLIANCE SUMMARY						
2021 WSEC Compliance Form for Commercial Buildings including Group R2, R3 & R4 over 3 stories and all R1 Administered by: ©2024 NECA. All rights reserved.						
Project Title		Cimco Sales - 2021 WSEC		For Building Department Use		Date: May 15, 2024
Project Address		2315 Inter Ave Puyallup, WA 98172		Project Department Use		
Applicant Name		Cimco Sales		Project Code		
Applicant Phone		253.476.7953		Project Code		
Applicant Email		gpc@cimco.com		Project Code		
For questions about this report, contact WSEC, Commercial Technical Support at 360-539-5300 or via email at comtechsupport@wasec.com						
General Occupancy		All Commercial		Industrial		Building Code Floor Area: 4,985
General Project Types		New Building or Addition Lighting Scope		Interior Lighting Fixture Lighting		Project Code Floor Area: 4,788
Lighting Project Description		Warehouse		Compliance Method		Fluores Above Grade: 1
Lighting Compliance Scope and Method		Interior / Exterior (Interior includes both interior and exterior)		LPA Calculation Adjustment		General Provisions: 1
Additional Energy Efficiency (AEC) Measures Included		Load Management (LDM) Measures Included		No lighting or electrical load management measures included in project		
Project Title		Cimco Sales - 2021 WSEC		Date		May 15, 2024
Lighting Power Calculation		NEW BUILDING - INTERIOR LIGHTING		Compliance Verification		COMPLIES
Compliance Method		Building area		LPA Calculation Adjustment		none
Interior Lighting Power Allowance - Building Area						
Building Area		Gross Interior Area (SF)		LPA (Watts/SF)		Total Watts Allowed (SF x LPA x 1)
Warehouse		4,788		0.60		2,873
Proposed Lighting Power Density						
Fixture Type/Application		Fixture ID		Building Area		New or Existing-to-Remain
Individual Fixtures		Suspended		XI		Warehouse
Suspended		FI		Warehouse		New
Suspended		FIE		Warehouse		New
Project Title		Cimco Sales - 2021 WSEC		Date		May 15, 2024
Proposed Fixtures Details		NEW BUILDING - INTERIOR LIGHTING		Compliance Verification		COMPLIES
Fixture Type/Application		Fixture ID		Location in Documents		Lamp Type
Individual Fixtures		Suspended		XI		LED
Fixture Description: Exit Combo EM		E3 01		Warehouse		New
Do these fixtures require specific application lighting controls? Note required		E3 01		Warehouse		New
Do these fixtures require specific application lighting controls? Note required		E3 01		Warehouse		New
Do these fixtures require specific application lighting controls? Note required		E3 01		Warehouse		New
Do these fixtures require specific application lighting controls? Note required		E3 01		Warehouse		New
Project Title		Cimco Sales - 2021 WSEC		Date		May 15, 2024
Lighting Power Calculation		NEW BUILDING - EXTERIOR LIGHTING		Compliance Verification		COMPLIES
Exterior Lighting Zone		ZONE 4		Base Site Allowance		560
Exterior Lighting Power Allowance						
Exterior Surface		Surface Sub-Type		Surface Area (SF)		LPA (Watts/SF)
Building entrances and exits		Pedestrian entrances & exits		291		19.6
Base Site Allowance		Totals		4,356		560
Proposed Exterior Lighting Power Density						
Fixture Type		Fixture ID		Exterior Surface Type		Quantity of Fixtures (QF)
Individual Fixtures		Wall-mounted		W1		Building entrances and exits - Pedestrian entrances & exits
Wall-mounted		W1EM		Warehouse		2
Wall-mounted		W2		Warehouse		4
Proposed Total LPD		560				

# LUMINAIRE SCHEDULE

CALLOUT	SYMBOL	DESCRIPTION	MODEL	INPUT WATTS	QUANTITY
F1	⎓	8' STRIP LIGHT CHAIN HUNG	ESL-CSS-800-8-3369W-3050K-2DHOC	69	10
F1E	⎓	8' STRIP LIGHT CHAIN HUNG EMERGENCY	ESL-CSS-800-8-3369W--3050K-2DHOC/EMG	69	3
W1	□	WALL PACK	ESL-FCWP-60W-140-PC	60	3
W1EM	•	EMERGENCY WALL PACK	ESL-FCWP-60W-14-PC-EMG	60	2
W2	□	WALL PACK	ESL-FCWP-65110W-23050-ff	65	4
X1	⊕	EXIT COMBO EM	LITHONIA -269XW8- ECRGHOSQM6	4	2

# EQUIPMENT SCHEDULE

CALLOUT	DESCRIPTION	SYMBOL	VOLTS	KVA	HP	MAKE/MODEL
DF-1	DESTRATIFICATION FAN	⊕	240/120	0.04		BIG ASS FANS HAIKU
DF-2	DESTRATIFICATION FAN	⊕	240/120	0.04		BIG ASS FANS HAIKU
DF-3	DESTRATIFICATION FAN	⊕	240/120	0.04		BIG ASS FANS HAIKU
DF-4	DESTRATIFICATION FAN	⊕	240/120	0.04		BIG ASS FANS HAIKU
EF-1	EXHAUST FAN	⊕	120	0.53	1/6 HP	GREENHECK SQ-80-VG
EH-1	ELECTRIC UNIT HEATER	⊕	240/120	5		INDEECO 926U05000UA-R2
EH-2	ELECTRIC UNIT HEATER	⊕	240/120	5		INDEECO 926U05000UA-R2
FLC-1	FORK LIFT CHARGER	⊕	240/120	0.1	F HP	
L-1	LOUVER	⊕	120	0.1	F HP	GREEHECK ESD-403
L-2	LOUVER	⊕	120	0.1	F HP	GREEHECK ESD-403
RH-1	RADIANT HEATER	⊕	240/120	0.75		INDEECO AS2448-750-208-PT

# RECEPTACLE SCHEDULE

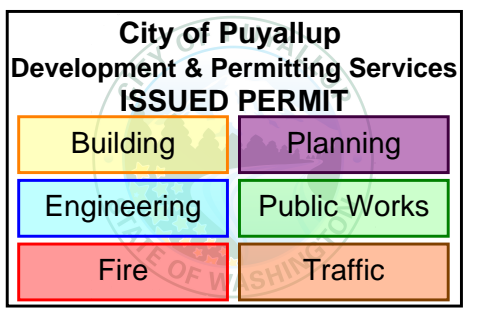
CALLOUT	SYMBOL	QUANTITY
DEDICATED	⊕	1
QUADPLEX	⊕	1

# Telephone and Data Schedule

CALLOUT	SYMBOL	QUANTITY
Computer Outlet	▼	1

# SWITCH SCHEDULE

CALLOUT	SYMBOL	QUANTITY
THERMOSTAT	⊕	3



PRCTI20240571

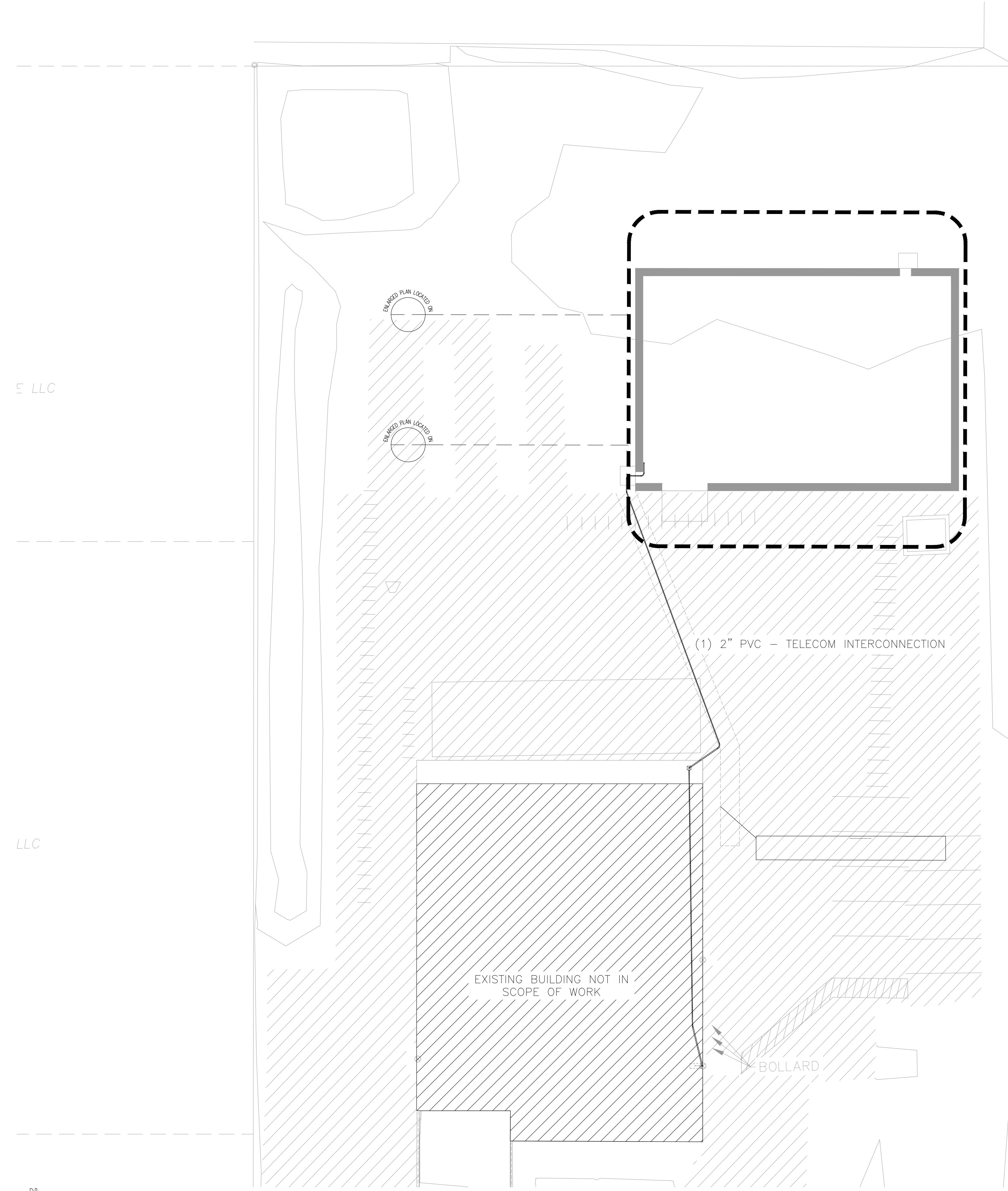


CIMCO SALES  
2315 INTER AVE • PUYALLUP WA 98372

- REVISIONS:
- △ (2024-04-15) BACKGROUND UPDATE AND LIGHTING LAYOUT
  - △ (2024-05-15) LIGHTING SUMMARY ADDED
  - △ (2024-05-15) LIGHTING SUMMARY UPDATED

EQUIPMENT SCHEDULES

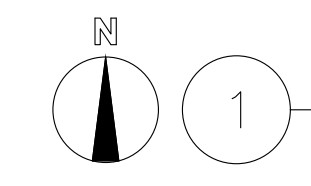
City of Puyallup Development & Permitting Services ISSUED PERMIT			
Building	Planning	Engineering	Public Works
Fire	Traffic		



LLC

LLC

2105200150  
2401 INTER LLC



CIMCO SALES

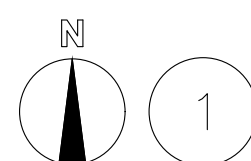
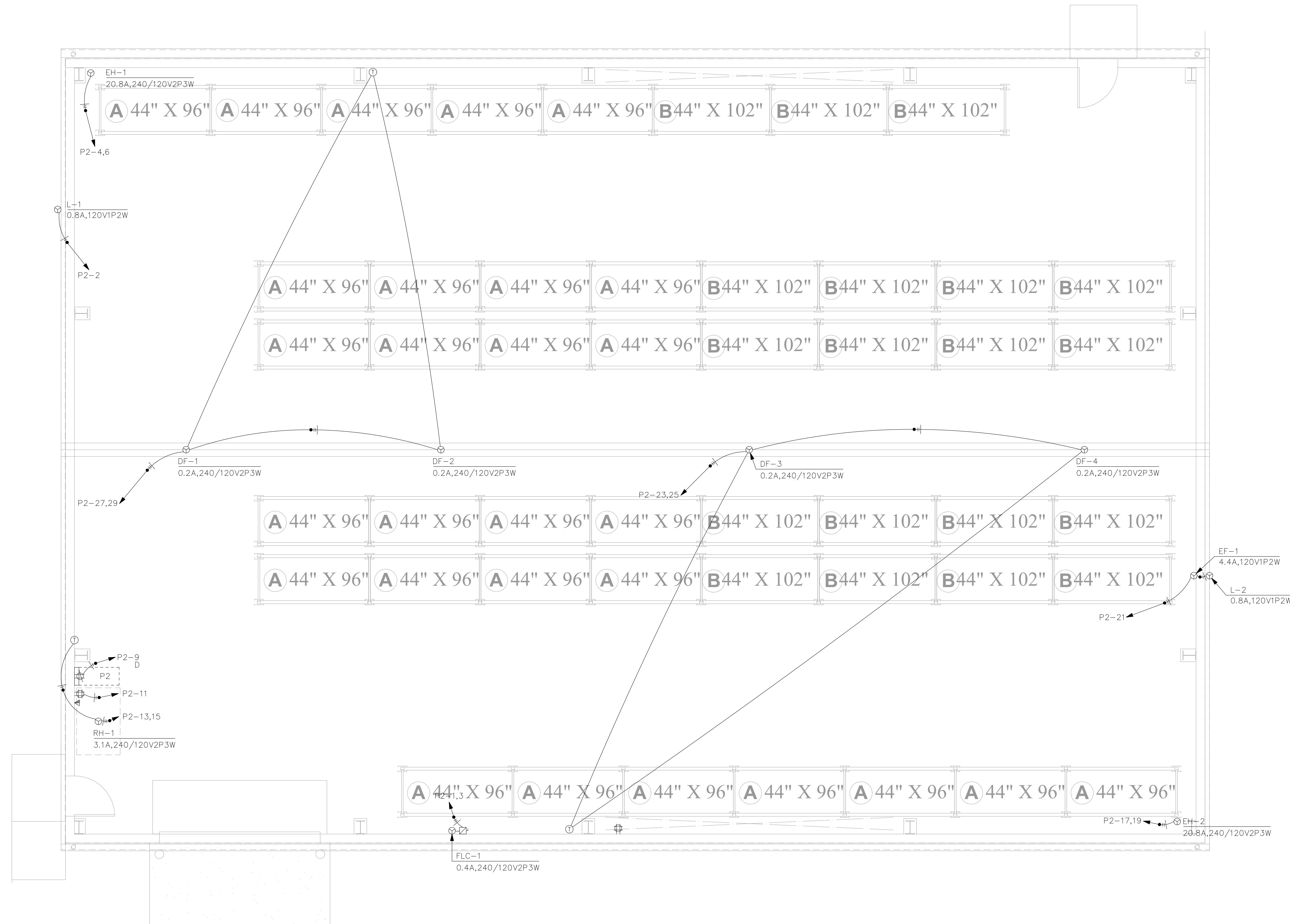
2315 INTER AVE • PUYALLUP WA 98372

- REVISIONS:
- ▲ (2024-04-15) BACKGROUND UPDATE AND LIGHTING LAYOUT
  - ▲ (2024-05-15) LIGHTING SUMMARY ADDED
  - ▲ (2024-05-15) LIGHTING SUMMARY UPDATED

SITE PLAN

City of Puyallup  
Development & Permitting Services  
ISSUED PERMIT

Building	Planning
Engineering	Public Works
Fire	Traffic



CIMCO SALES

2315 INTER AVE • PUYALLUP WA 98372

REVISIONS:

- ⚠ (2024-04-15) BACKGROUND UPDATE AND LIGHTING LAYOUT
- ⚠ (2024-05-15) LIGHTING SUMMARY ADDED
- ⚠ (2024-05-15) LIGHTING SUMMARY UPDATED

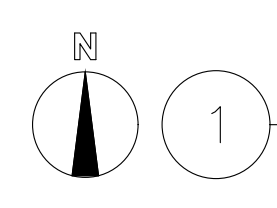
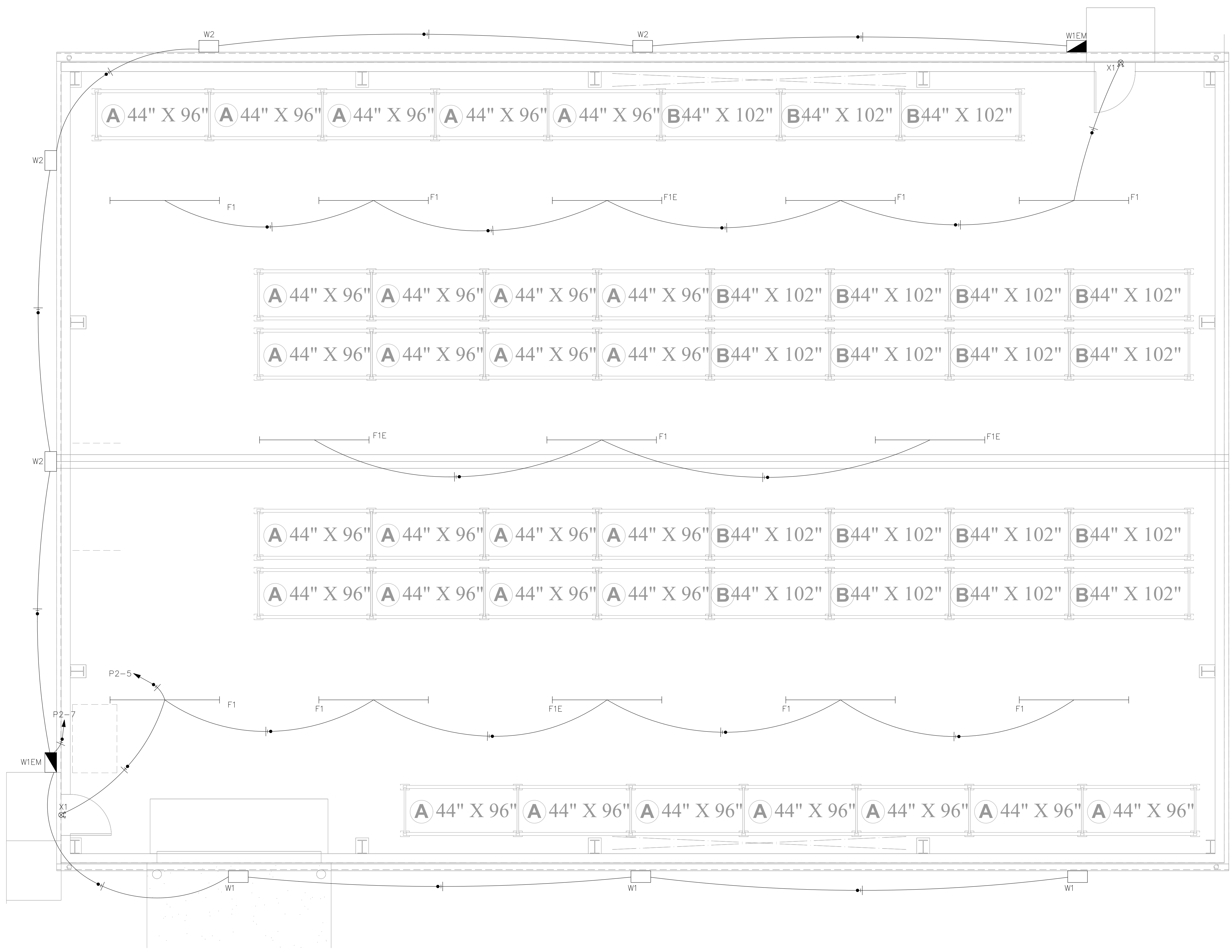
SHEET NAME:

POWER PLAN

DATE: 05-15-24	SHEET
DRAWN BY: C.V.S.	E2.01
CHECKED BY: -	
JOB NO: 23-025	

City of Puyallup  
Development & Permitting Services  
ISSUED PERMIT

Building	Planning
Engineering	Public Works
Fire	Traffic

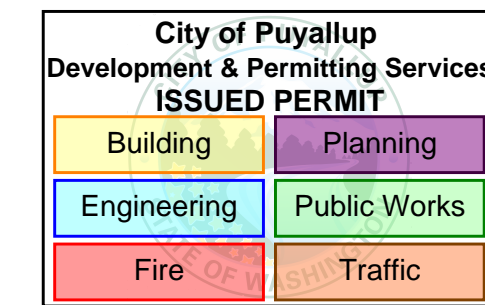


CIMCO SALES

2315 INTER AVE • PUYALLUP WA 98372

- REVISIONS:
- ▲ (2024-04-15) BACKGROUND UPDATE AND LIGHTING LAYOUT
  - ▲ (2024-05-15) LIGHTING SUMMARY ADDED
  - ▲ (2024-05-15) LIGHTING SUMMARY UPDATED

LIGHTING PLAN

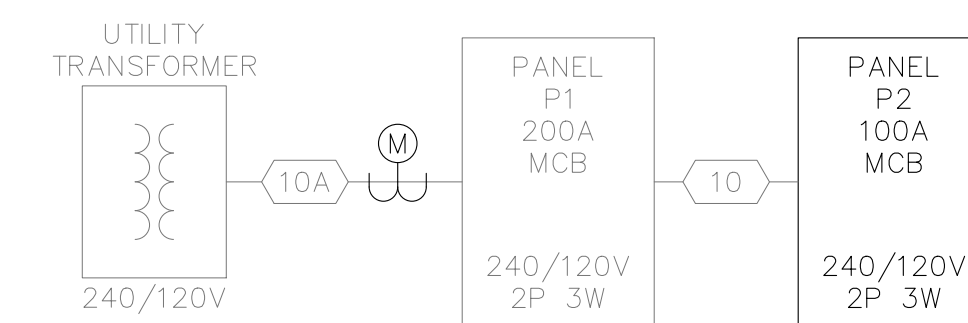


P2		VOLTS 240/120V 2P 3W				AIC 65,000			
ROOM MOUNTING SURFACE		BUS AMPS 100				MAIN BKR 100			
FED FROM P1		NEUTRAL 100%				LUGS STANDARD			
NOTE									
CKT #	CKT BKR	CIRCUIT DESCRIPTION	LOAD KVA		CKT #	CKT BKR	CIRCUIT DESCRIPTION	LOAD KVA	
			A	B				A	B
1	20/2	FLC-1	0.05		2	20/1	L-1	0.1	
3				0.05	4	30/2	EH-1		2.5
5	20/1	INTERIOR LIGHTING	1.04		6			2.5	
7	20/1	EXTERIOR LIGHTING		0.56	8	20/1	SPACE		0
9	20/1	PALLET JACK RECEPTACLE	1.5		10	20/1	SPACE	0	0
11	20/1	QUAD RECEPTACLE		0.36	12	20/1	SPACE	0	0
13	20/2	RH-1	0.375		14	20/1	SPACE	0	0
15				0.375	16	20/1	SPACE	0	0
17	30/2	EH-2	2.5		18	20/1	SPACE	0	0
19				2.5	20	20/1	SPACE	0	0
21	20/1	EF-1, L-2	0.628		22	20/1	SPACE	0	0
23	20/2	DF-3, DF-4		0.042	24	20/1	SPACE	0	0
25				0.042	26	20/1	SPACE	0	0
27	20/2	DF-1, DF-2		0.042	28	20/1	SPACE	0	0
29				0.042	30	20/1	SPACE	0	0
31	20/1	SPACE		0	32	20/1	SPACE	0	0
33	20/1	SPACE		0	34	20/1	SPACE	0	0
35	20/1	SPACE		0	36	20/1	SPACE	0	0
37	20/1	SPACE		0	38	20/1	SPACE	0	0
39	20/1	SPACE		0	40	20/1	SPACE	0	0
41	20/1	SPACE		0	42	20/1	SPACE	0	0
TOTAL CONNECTED KVA BY PHASE								8.78	6.43
			CONN KVA	CALC KVA				CONN KVA	CALC KVA
LIGHTING			1.6	2 (125%)	RECEPTACLES			1.86	1.86 (50%>10)
LARGEST MOTOR			0.528	0.132 (25%)	HEATING			10.8	10.8 (100%)
MOTORS			0.955	0.955 (100%)	COOLING			0.042	0 (0%)
						TOTAL LOAD			15.7
						BALANCED LOAD			65.4 A

FEEDER SCHEDULE

ID	FEEDER AMPS	CONDUIT AND FEEDER
10	100	1-1/4"C,2#1/0 AL,#1/0 AL N,#8G
10A	200	2"C,2#250kcmil AL,#250kcmil AL N,#4G

SIZING METHOD: Aluminum



CIMCO SALES  
2315 INTER AVE • PUYALLUP WA 98372

- REVISIONS:
- (2024-04-15) BACKGROUND UPDATE AND LIGHTING LAYOUT
  - (2024-05-15) LIGHTING SUMMARY ADDED
  - (2024-05-15) LIGHTING SUMMARY UPDATED

ONE-LINE RISER DIAGRAM